

DORSET MACRO-MOTHS 2010

COUNTY MACRO-MOTH RECORDER'S REPORT

LESLIE J. EVANS-HILL FRES

Butterfly Conservation, Manor Yard, East Lulworth, Dorset BH20 5QP

E-mail: levans-hill@butterfly-conservation.org

Abstract

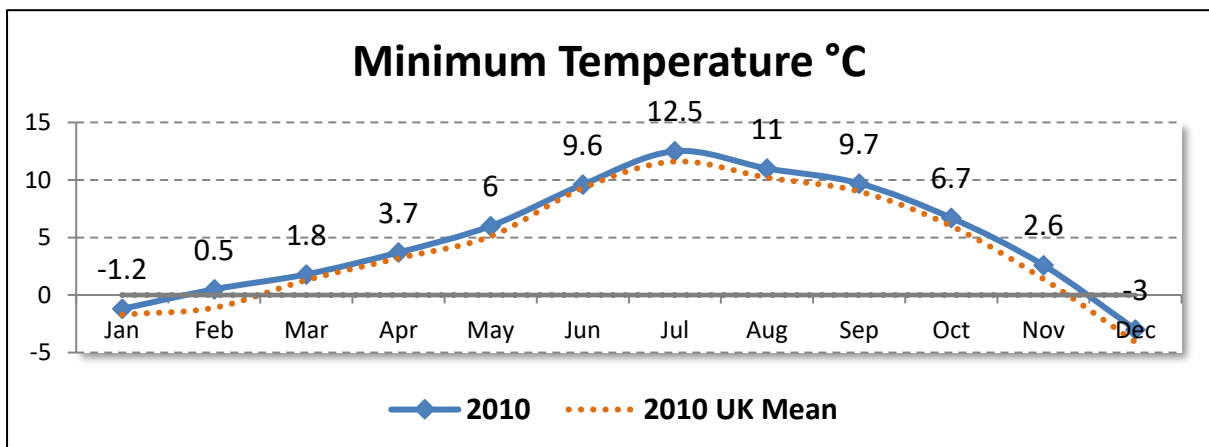
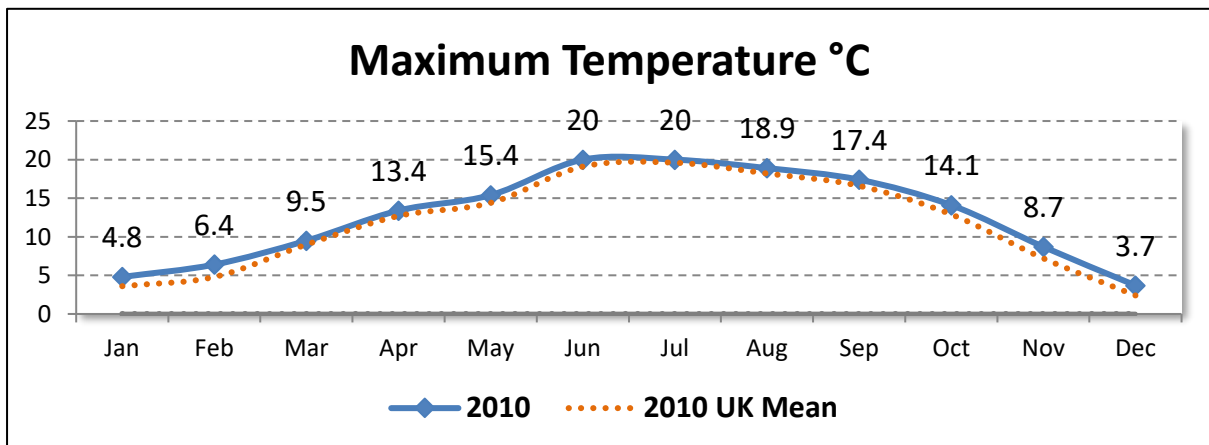
Presented here are data pertaining to submitted records of local macro-moth records of interest during the year 2010 in Dorset administrative and vice-county (9). Errors & omissions expected.

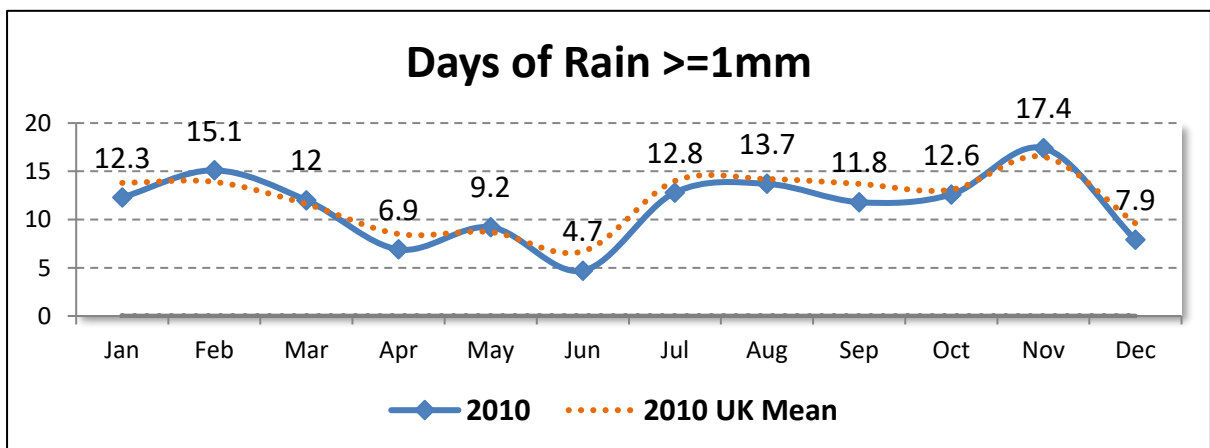
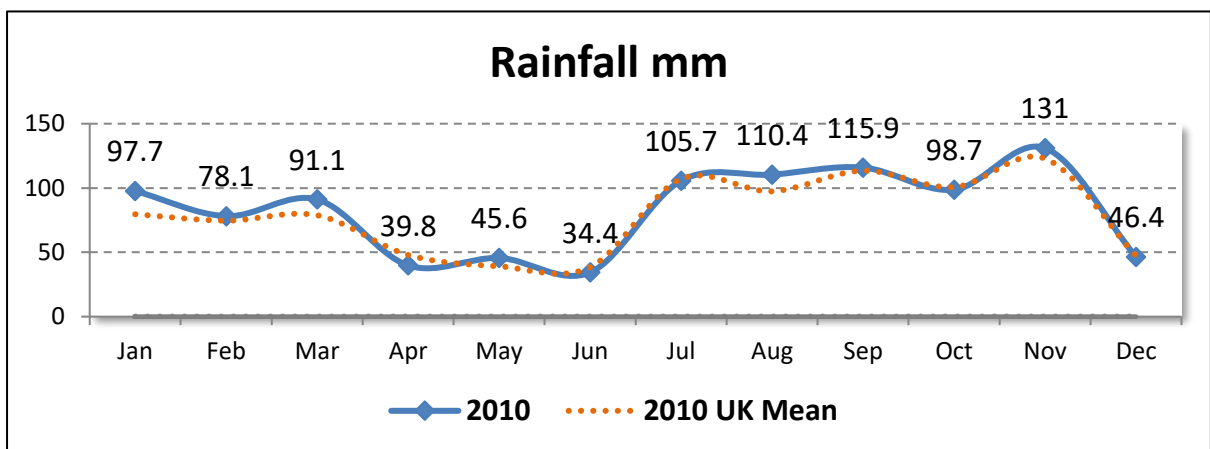
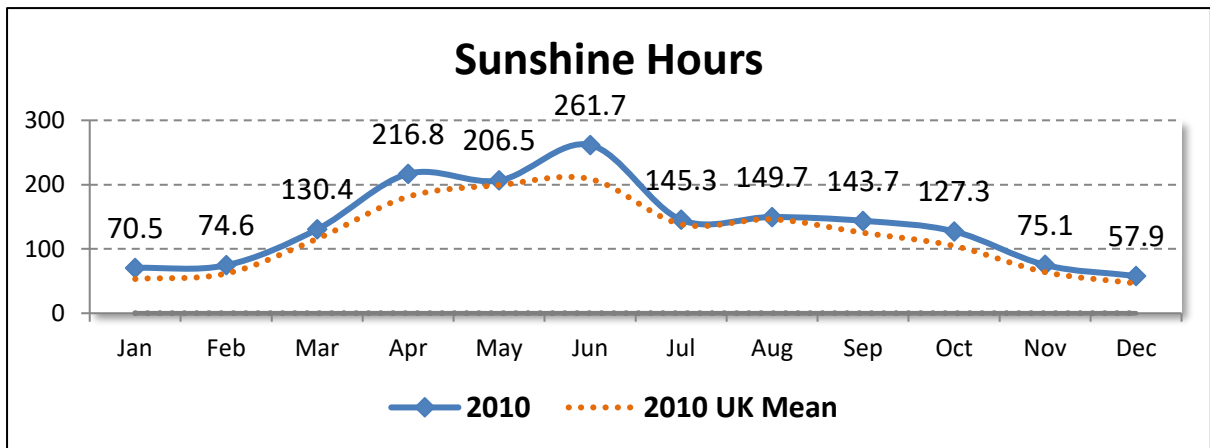
Records and Species per Year

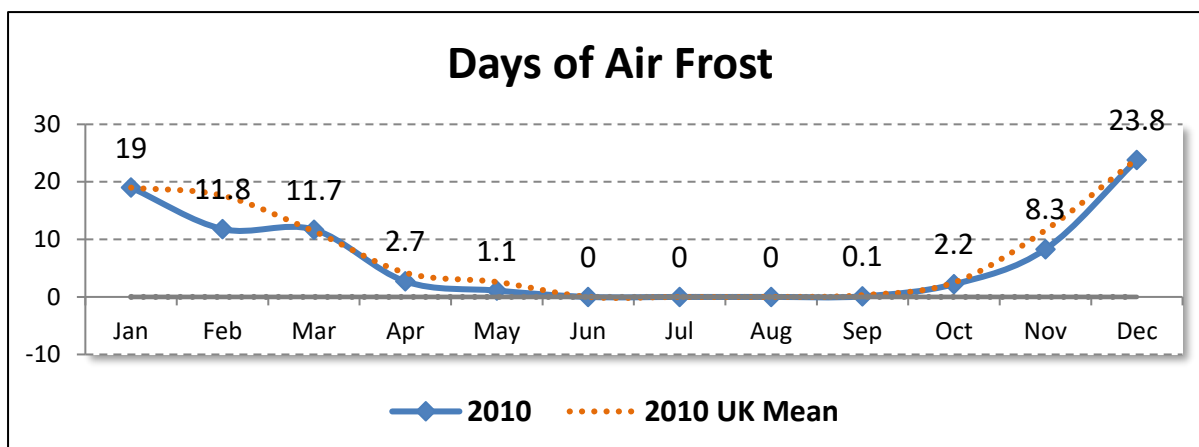
<i>Year</i>	<i>Records submitted</i>	<i>Species</i>
2010	58,238	558

Weather

All data are © Crown Copyright. UK Met Office.







New to Dorset

One species is confirmed new to Dorset during 2010:

- *Amphipoea lucens* (Freyer, 1845) **LARGE EAR** from Upwey (SY6682); 1 Adult on 09 Aug 2010 by P Harris.

Species per 10km

All life stages – Unverified records and records where there is doubt are excluded.

<i>10km</i>	<i>Species</i>	<i>10km</i>	<i>Species</i>	<i>10km</i>	<i>Species</i>	<i>10km</i>	<i>Species</i>	<i>10km</i>	<i>Species</i>
ST20	1	ST73	149	SU11	306	SY77	0	SZ08	154
ST30	217	ST80	189	SY39	282	SY78	272	SZ09	272
ST40	247	ST81	15	SY48	5	SY79	385		
ST50	85	ST82	17	SY49	274	SY87	6		
ST51	0	ST90	274	SY58	335	SY88	287		
ST60	175	ST91	175	SY59	209	SY89	277		
ST61	238	SU00	239	SY66	77	SY97	24		
ST70	17	SU01	290	SY67	294	SY98	345		
ST71	204	SU02	0	SY68	335	SY99	283		
ST72	187	SU10	175	SY69	80	SZ07	302		

2010 Summary

All figures are for adults. Records with vague dates are excluded; however, unverified records are included. For species that overwinter as adults or emerge the year prior, the earliest and latest dates are unavailable.

<i>Code</i>	<i>Taxon</i>	<i>Vernacular</i>	<i>Records</i>	<i>Individuals</i>	<i>Earliest</i>	<i>Latest</i>
	<i>Acronicta tridens/psi</i>	DARK DAGGER/GREY DAGGER	104	132	21 May	10 Sep
	<i>Amphipoea oculea</i> agg.	EAR MOTH AGG.	60	94	08 Jul	21 Aug
	<i>Epirrita dilutata</i> agg.	NOVEMBER MOTH AGG.	51	97	08 Oct	14 Nov
	<i>Euxoa tritici/obelisca</i>	WHITE-LINE DART/SQUARE-SPOT DART	8	10	21 Jul	21 Sep
	<i>Hoplodrina octogenaria/blanda</i>	UNCERTAIN/RUSTIC AGG.	898	3143	22 May	27 Sep
	<i>Mesapamea secalis</i> agg.	COMMON RUSTIC AGG.	575	2984	03 Jun	22 Oct
	<i>Oligia strigilis</i> agg.	MARBLED MINOR AGG.	266	1367	17 May	26 Aug
3.001	<i>Triodia sylvina</i>	ORANGE SWIFT	115	145	09 Aug	22 Sep
3.002	<i>Korscheltellus lupulina</i>	COMMON SWIFT	192	504	14 May	13 Jul
3.004	<i>Phymatopus hecta</i>	GOLD SWIFT	4	5	03 Jun	20 Jul
3.005	<i>Hepialus humuli</i>	GHOST MOTH	65	80	05 Jun	16 Aug
50.001	<i>Cossus cossus</i>	GOAT MOTH	3	3	17 Jun	27 Jun
50.002	<i>Zeuzera pyrina</i>	LEOPARD MOTH	12	13	25 Jun	30 Jul
50.003	<i>Phragmataecia castaneae</i>	REED LEOPARD	6	11	27 Jun	30 Jul
52.003	<i>Sesia bembeciformis</i>	LUNAR HORNET MOTH	1	1	25 Jul	25 Jul
52.008	<i>Synanthedon formicaeformis</i>	RED-TIPPED CLEARWING	1	1	06 Jul	06 Jul
52.010	<i>Synanthedon andrenaeformis</i>	ORANGE-TAILED CLEARWING	3	8	29 Jun	06 Jul
52.013	<i>Synanthedon tipuliformis</i>	CURRANT CLEARWING	1	1	03 Jul	03 Jul
52.014	<i>Bembecia ichneumoniformis</i>	SIX-BELTED CLEARWING	1	4	25 Jun	25 Jun
53.001	<i>Apoda limacodes</i>	FESTOON	57	79	05 Jun	25 Jul
54.002	<i>Adscita statices</i>	FORESTER	9	11	07 Jun	27 Jun
54.003	<i>Adscita geryon</i>	CISTUS FORESTER	2	7	12 Jun	22 Jun
54.008	<i>Zygaena filipendulae</i>	SIX-SPOT BURNET	76	10355	07 May	16 Aug
54.010	<i>Zygaena trifolii</i>	FIVE-SPOT BURNET	17	215	05 Jun	23 Jul
65.001	<i>Falcaria lacertinaria</i>	SCALLOPED HOOK-TIP	58	74	05 May	04 Sep

<i>Code</i>	<i>Taxon</i>	<i>Vernacular</i>	<i>Records</i>	<i>Individuals</i>	<i>Earliest</i>	<i>Latest</i>
65.002	<i>Watsonalla binaria</i>	OAK HOOK-TIP	44	47	20 May	30 Aug
65.003	<i>Watsonalla cultraria</i>	BARRED HOOK-TIP	10	15	21 May	21 Aug
65.005	<i>Drepana falcataria</i>	PEBBLE HOOK-TIP	95	127	27 Apr	03 Sep
65.007	<i>Cilix glaucata</i>	CHINESE CHARACTER	192	219	24 Apr	15 Sep
65.008	<i>Thyatira batis</i>	PEACH BLOSSOM	87	135	24 May	25 Aug
65.009	<i>Habrosyne pyritoides</i>	BUFF ARCHES	306	692	03 Jun	22 Oct
65.010	<i>Tethea ocularis</i>	FIGURE OF EIGHTY	51	63	25 May	16 Jul
65.011	<i>Tethea or</i>	POPLAR LUTESTRING	1	1	09 Jul	09 Jul
65.013	<i>Ochropacha duplaris</i>	COMMON LUTESTRING	26	70	25 May	19 Jul
65.014	<i>Cymatophorina diluta</i>	OAK LUTESTRING	1	1	05 Sep	05 Sep
65.015	<i>Polyploca ridens</i>	FROSTED GREEN	19	53	16 Apr	15 May
65.016	<i>Achlya flavicornis</i>	YELLOW HORNED	12	21	17 Mar	05 Apr
66.001	<i>Poecilocampa populi</i>	DECEMBER MOTH	66	249	Unavailable	Unavailable
66.002	<i>Trichiura crataegi</i>	PALE EGGAR	40	66	22 Aug	28 Sep
66.003	<i>Malacosoma neustria</i>	LACKEY	236	856	13 Jun	26 Aug
66.005	<i>Eriogaster lanestris</i>	SMALL EGGAR	7	9	21 Mar	07 Apr
66.006	<i>Lasiocampa trifolii</i>	GRASS EGGAR	2	2	13 Aug	19 Aug
66.007	<i>Lasiocampa quercus</i>	OAK EGGAR	25	33	20 Jul	17 Aug
66.008	<i>Macrothylacia rubi</i>	FOX MOTH	33	73	20 May	02 Jul
66.010	<i>Euthrix potatoria</i>	DRINKER	201	305	02 Jun	22 Oct
66.012	<i>Gastropacha quercifolia</i>	LAPPET	30	41	29 Jun	26 Jul
68.001	<i>Saturnia pavonia</i>	EMPEROR MOTH	9	15	27 Apr	21 May
69.001	<i>Mimas tiliae</i>	LIME HAWK-MOTH	26	26	28 Apr	04 Jul
69.002	<i>Smerinthus ocellata</i>	EYED HAWK-MOTH	108	125	16 May	30 Jul
69.003	<i>Laothoe populi</i>	POPLAR HAWK-MOTH	463	622	06 May	22 Oct
69.004	<i>Agrius convolvuli</i>	CONVOLVULUS HAWK-MOTH	44	69	05 Jul	11 Oct
69.005	<i>Acherontia atropos</i>	DEATH'S-HEAD HAWK-MOTH	1	1	14 Sep	14 Sep
69.006	<i>Sphinx ligustri</i>	PRIVET HAWK-MOTH	22	37	21 May	07 Aug
69.007	<i>Sphinx pinastri</i>	PINE HAWK-MOTH	68	113	27 Apr	20 Aug

<i>Code</i>	<i>Taxon</i>	<i>Vernacular</i>	<i>Records</i>	<i>Individuals</i>	<i>Earliest</i>	<i>Latest</i>
69.008	<i>Hemaris tityus</i>	NARROW-BORDERED BEE HAWK-MOTH	9	16	28 Apr	12 Jun
69.010	<i>Macroglossum stellatarum</i>	HUMMING-BIRD HAWK-MOTH	184	195	05 Mar	31 Dec
69.015	<i>Hyles livornica</i>	STRIPED HAWK-MOTH	6	6	04 Jun	08 Sep
69.016	<i>Deilephila elpenor</i>	ELEPHANT HAWK-MOTH	511	1517	23 May	30 Aug
69.017	<i>Deilephila porcellus</i>	SMALL ELEPHANT HAWK-MOTH	107	214	04 Jun	29 Jul
69.018	<i>Hippotion celerio</i>	SILVER-STRIPED HAWK-MOTH	1	1	29 Sep	29 Sep
70.002	<i>Idaea muricata</i>	PURPLE-BORDERED GOLD	5	8	28 Jun	25 Jul
70.003	<i>Idaea ochrata</i>	BRIGHT WAVE	1	4	01 Jul	01 Jul
70.004	<i>Idaea rusticata</i>	LEAST CARPET	2	2	26 Jun	17 Jul
70.006	<i>Idaea fuscovenosa</i>	DWARF CREAM WAVE	22	24	19 May	15 Aug
70.008	<i>Idaea seriata</i>	SMALL DUSTY WAVE	121	139	03 Jun	21 Sep
70.009	<i>Idaea subsericeata</i>	SATIN WAVE	29	44	31 May	21 Aug
70.010	<i>Idaea sylvestraria</i>	DOTTED BORDER WAVE	2	6	09 Jul	19 Jul
70.011	<i>Idaea dimidiata</i>	SINGLE-DOTTED WAVE	324	478	24 Jun	11 Sep
70.012	<i>Idaea trigeminata</i>	TREBLE BROWN SPOT	105	197	21 May	03 Oct
70.013	<i>Idaea biselata</i>	SMALL FAN-FOOTED WAVE	275	699	17 Jun	24 Aug
70.015	<i>Idaea emarginata</i>	SMALL SCALLOP	1	1	23 Jul	23 Jul
70.016	<i>Idaea aversata</i>	RIBAND WAVE	690	2127	30 May	19 Sep
70.017	<i>Idaea degeneraria</i>	PORTLAND RIBBON WAVE	11	14	17 Jun	23 Sep
70.018	<i>Idaea straminata</i>	PLAIN WAVE	19	28	25 Jun	15 Aug
70.023	<i>Scopula marginepunctata</i>	MULLEIN WAVE	101	119	20 May	23 Sep
70.024	<i>Scopula imitaria</i>	SMALL BLOOD-VEIN	138	182	19 Jun	15 Aug
70.025	<i>Scopula immutata</i>	LESSER CREAM WAVE	6	8	11 Jul	05 Aug
70.027	<i>Scopula floslactata</i>	CREAM WAVE	30	54	21 May	01 Jul
70.028	<i>Scopula emutaria</i>	ROSY WAVE	3	3	27 Jun	28 Jun
70.029	<i>Timandra comae</i>	BLOOD-VEIN	322	453	11 May	09 Oct
70.030	<i>Cyclophora pendularia</i>	DINGY MOCHA	6	16	08 May	08 Jun
70.031	<i>Cyclophora annularia</i>	MOCHA	20	26	20 May	29 Aug
70.032	<i>Cyclophora albipunctata</i>	BIRCH MOCHA	19	29	28 Apr	08 Aug

<i>Code</i>	<i>Taxon</i>	<i>Vernacular</i>	<i>Records</i>	<i>Individuals</i>	<i>Earliest</i>	<i>Latest</i>
70.036	<i>Cyclophora punctaria</i>	MAIDEN'S BLUSH	76	90	28 Apr	15 Sep
70.037	<i>Cyclophora linearia</i>	CLAY TRIPLE-LINES	13	22	04 Jun	06 Sep
70.038	<i>Rhodometra sacra</i>	VESTAL	23	25	22 Aug	08 Nov
70.040	<i>Scotopteryx mucronata</i>	LEAD BELLE	1	4	04 Jun	04 Jun
70.041	<i>Scotopteryx luridata</i>	JULY BELLE	6	9	18 Jun	27 Jul
70.043	<i>Scotopteryx bipunctaria</i>	CHALK CARPET	31	66	06 Jul	01 Sep
70.045	<i>Scotopteryx chenopodiata</i>	SHADED BROAD-BAR	34	58	25 Jun	11 Sep
70.046	<i>Orthonama vittata</i>	OBLIQUE CARPET	3	10	31 May	09 Jun
70.047	<i>Nycterosea obstipata</i>	GEM	17	17	30 Apr	06 Nov
70.049	<i>Xanthorhoe fluctuata</i>	GARDEN CARPET	282	334	06 Apr	17 Oct
70.051	<i>Xanthorhoe spadicearia</i>	RED TWIN-SPOT CARPET	311	475	27 Apr	30 Aug
70.052	<i>Xanthorhoe ferrugata</i>	DARK-BARRED TWIN-SPOT CARPET	33	40	05 May	10 Sep
70.053	<i>Xanthorhoe designata</i>	FLAME CARPET	105	142	28 Apr	21 Sep
70.054	<i>Xanthorhoe montanata</i>	SILVER-GROUND CARPET	168	377	17 May	13 Jul
70.057	<i>Catarhoe rubidata</i>	RUDDY CARPET	2	2	29 Jun	30 Jun
70.059	<i>Camptogramma bilineata</i>	YELLOW SHELL	73	77	05 Jun	11 Sep
70.061	<i>Epirrhoe alternata</i>	COMMON CARPET	355	503	29 Apr	20 Sep
70.062	<i>Epirrhoe rivata</i>	WOOD CARPET	24	28	18 Jun	09 Sep
70.063	<i>Epirrhoe galiata</i>	GALIUM CARPET	20	30	18 May	21 Sep
70.064	<i>Euphyia biangulata</i>	CLOAKED CARPET	7	8	29 Jun	30 Jul
70.065	<i>Euphyia unangulata</i>	SHARP-ANGLED CARPET	7	18	03 Jun	25 Jul
70.066	<i>Earophila badiata</i>	SHOULDER STRIPE	21	41	17 Mar	08 May
70.067	<i>Anticlea derivata</i>	STREAMER	42	57	09 Apr	21 May
70.068	<i>Mesoleuca albicillata</i>	BEAUTIFUL CARPET	5	5	25 Jun	25 Jul
70.070	<i>Larentia clavaria</i>	MALLOW	20	20	27 Sep	27 Oct
70.074	<i>Hydriomena furcata</i>	JULY HIGHFLYER	133	281	30 Jun	23 Aug
70.075	<i>Hydriomena impluviata</i>	MAY HIGHFLYER	51	129	05 May	02 Jul
70.076	<i>Hydriomena ruberata</i>	RUDDY HIGHFLYER	2	3	22 May	25 May
70.077	<i>Pennithera firmata</i>	PINE CARPET	119	226	30 May	27 Oct

<i>Code</i>	<i>Taxon</i>	<i>Vernacular</i>	<i>Records</i>	<i>Individuals</i>	<i>Earliest</i>	<i>Latest</i>
70.079	<i>Thera britannica</i>	SPRUCE CARPET	77	320	23 Apr	05 Nov
70.081	<i>Thera obeliscata</i>	GREY PINE CARPET	146	512	06 Apr	22 Nov
70.083	<i>Thera cupressata</i>	CYPRESS CARPET	102	135	23 May	13 Nov
70.084	<i>Plemyria rubiginata</i>	BLUE-BORDERED CARPET	51	58	24 Jun	21 Jul
70.085	<i>Cidaria fulvata</i>	BARRED YELLOW	106	144	09 Jun	25 Jul
70.086	<i>Electrophaes corylata</i>	BROKEN-BARRED CARPET	69	108	14 May	03 Aug
70.087	<i>Cosmorhoe ocellata</i>	PURPLE BAR	97	99	05 May	10 Sep
70.089	<i>Eulithis prunata</i>	PHOENIX	62	73	28 May	15 Aug
70.090	<i>Eulithis testata</i>	CHEVRON	5	10	22 Jul	14 Sep
70.093	<i>Gandaritis pyraliata</i>	BARRED STRAW	147	229	05 Jun	28 Jul
70.094	<i>Ecliptopera silaceata</i>	SMALL PHOENIX	55	101	26 Apr	02 Sep
70.095	<i>Chloroclysta siterata</i>	RED-GREEN CARPET	81	123	Unavailable	Unavailable
70.097	<i>Dysstroma truncata</i>	COMMON MARBLED CARPET	486	841	15 May	19 Nov
70.098	<i>Dysstroma citrata</i>	DARK MARBLED CARPET	5	5	03 Jun	08 Oct
70.100	<i>Colostygia pectinataria</i>	GREEN CARPET	235	442	05 May	29 Sep
70.101	<i>Colostygia multistrigaria</i>	MOTTLED GREY	4	4	23 Jan	10 Apr
70.103	<i>Lampropteryx suffumata</i>	WATER CARPET	19	31	06 Apr	05 Jun
70.106	<i>Operophtera brumata</i>	WINTER MOTH	38	99	Unavailable	Unavailable
70.107	<i>Epirrita dilutata</i>	NOVEMBER MOTH	6	31	12 Oct	03 Nov
70.109	<i>Epirrita autumnata</i>	AUTUMNAL MOTH	1	1	03 Nov	03 Nov
70.111	<i>Asthena albulata</i>	SMALL WHITE WAVE	32	70	05 May	08 Aug
70.112	<i>Euchoeca nebulata</i>	DINGY SHELL	8	11	24 May	03 Aug
70.113	<i>Hydrelia sylvata</i>	WAVED CARPET	1	1	05 Jun	05 Jun
70.114	<i>Hydrelia flammeolaria</i>	SMALL YELLOW WAVE	39	55	04 Jun	01 Aug
70.118	<i>Philereme vetulata</i>	BROWN SCALLOP	2	21	09 Jul	24 Jul
70.119	<i>Philereme transversata</i>	DARK UMBER	15	20	09 Jul	27 Jul
70.121	<i>Rheumaptera undulata</i>	SCALLOP SHELL	43	52	27 May	03 Aug
70.126	<i>Horisme vitalbata</i>	SMALL WAVED UMBER	99	120	05 May	25 Aug
70.127	<i>Horisme tersata</i>	FERN	38	56	20 Jun	08 Aug

<i>Code</i>	<i>Taxon</i>	<i>Vernacular</i>	<i>Records</i>	<i>Individuals</i>	<i>Earliest</i>	<i>Latest</i>
70.128	<i>Melanthia procellata</i>	PRETTY CHALK CARPET	39	78	21 May	09 Oct
70.129	<i>Anticollix sparsata</i>	DENTATED PUG	1	1	01 Jul	01 Jul
70.130	<i>Odezia atrata</i>	CHIMNEY SWEEPER	2	14	11 Jun	26 Jun
70.131	<i>Mesotype didymata</i>	TWIN-SPOT CARPET	2	2	03 Aug	16 Aug
70.132	<i>Perizoma affinitata</i>	RIVULET	56	70	29 Apr	17 Aug
70.133	<i>Perizoma alchemillata</i>	SMALL RIVULET	69	87	26 May	18 Aug
70.134	<i>Perizoma bifaciata</i>	BARRED RIVULET	4	4	19 Jul	08 Aug
70.137	<i>Perizoma albulata</i>	GRASS RIVULET	6	25	22 May	18 Jun
70.138	<i>Perizoma flavofasciata</i>	SANDY CARPET	39	47	21 May	27 Jul
70.141	<i>Gymnoscelis rufifasciata</i>	DOUBLE-STRIPED PUG	505	861	15 Mar	28 Oct
70.142	<i>Chloroclystis v-ata</i>	V-PUG	181	248	18 Apr	15 Aug
70.143	<i>Pasiphila chloerata</i>	SLOE PUG	29	34	26 May	26 Jul
70.144	<i>Pasiphila rectangularata</i>	GREEN PUG	190	331	18 May	26 Jul
70.146	<i>Eupithecia haworthiata</i>	HAWORTH'S PUG	36	100	03 Jun	09 Aug
70.147	<i>Eupithecia tenuiata</i>	SLENDER PUG	19	24	02 Jun	15 Aug
70.148	<i>Eupithecia inturbata</i>	MAPLE PUG	30	62	02 Jun	21 Aug
70.149	<i>Eupithecia abietaria</i>	CLOAKED PUG	1	6	02 Jul	02 Jul
70.150	<i>Eupithecia linariata</i>	TOADFLAX PUG	6	6	22 Jun	06 Aug
70.151	<i>Eupithecia pulchellata</i>	FOXGLOVE PUG	79	119	18 May	26 Jul
70.152	<i>Eupithecia ultimaria</i>	CHANNEL ISLANDS PUG	8	18	04 Jun	11 Sep
70.153	<i>Eupithecia plumbeolata</i>	LEAD-COLOURED PUG	2	20	26 Jun	26 Jun
70.155	<i>Eupithecia venosata</i>	NETTED PUG	1	1	09 Jun	09 Jun
70.156	<i>Eupithecia abbreviata</i>	BRINDLED PUG	108	222	01 Apr	11 Jun
70.157	<i>Eupithecia dodoneata</i>	OAK-TREE PUG	40	58	18 Apr	01 Jul
70.159	<i>Eupithecia phoeniceata</i>	CYPRESS PUG	26	27	24 Jul	03 Oct
70.160	<i>Eupithecia tripunctaria</i>	WHITE-SPOTTED PUG	54	68	18 May	26 Aug
70.161	<i>Eupithecia virgaureata</i>	GOLDEN-ROD PUG	2	2	15 Aug	03 Sep
70.162	<i>Eupithecia tantillaria</i>	DWARF PUG	13	21	05 May	02 Jul
70.163	<i>Eupithecia lariciata</i>	LARCH PUG	9	14	25 Apr	04 Aug

<i>Code</i>	<i>Taxon</i>	<i>Vernacular</i>	<i>Records</i>	<i>Individuals</i>	<i>Earliest</i>	<i>Latest</i>
70.168	<i>Eupithecia nanata</i>	NARROW-WINGED PUG	29	42	28 Apr	04 Sep
70.169	<i>Eupithecia innotata</i>	ANGLE-BARRED PUG	4	4	09 Jun	02 Jul
70.170	<i>Eupithecia irriguata</i>	MARBLED PUG	1	1	01 Jun	01 Jun
70.171	<i>Eupithecia indigata</i>	OCHREOUS PUG	6	11	18 May	05 Jun
70.173	<i>Eupithecia centaureata</i>	LIME-SPECK PUG	174	197	18 May	01 Oct
70.174	<i>Eupithecia insigniata</i>	PINION-SPOTTED PUG	1	1	19 May	19 May
70.176	<i>Eupithecia intricata</i>	FREYER'S PUG	50	58	17 May	20 Jul
70.177	<i>Eupithecia satyrata</i>	SATYR PUG	2	2	13 Jul	19 Jul
70.179	<i>Eupithecia absinthiata</i>	WORMWOOD PUG	53	68	15 May	26 Aug
70.181	<i>Eupithecia valerianata</i>	VALERIAN PUG	1	2	09 Jul	09 Jul
70.182	<i>Eupithecia assimilata</i>	CURRENT PUG	54	56	05 May	21 Sep
70.183	<i>Eupithecia vulgata</i>	COMMON PUG	309	598	24 Apr	19 Sep
70.184	<i>Eupithecia exiguata</i>	MOTTLED PUG	120	210	24 Apr	12 Jul
70.187	<i>Eupithecia icterata</i>	TAWNY SPECKLED PUG	12	12	23 Jul	08 Sep
70.188	<i>Eupithecia succenturiata</i>	BORDERED PUG	8	8	21 Jun	31 Jul
70.189	<i>Eupithecia subumbrata</i>	SHADED PUG	8	22	03 Jun	01 Jul
70.190	<i>Eupithecia subfuscata</i>	GREY PUG	44	68	18 Apr	19 Aug
70.192	<i>Aplocera plagiata</i>	TREBLE-BAR	15	16	24 May	08 Sep
70.193	<i>Aplocera efformata</i>	LESSER TREBLE-BAR	3	4	01 Jun	11 Aug
70.198	<i>Lobophora halterata</i>	SERAPHIM	8	9	21 May	28 Jun
70.199	<i>Pterapherapteryx sexalata</i>	SMALL SERAPHIM	42	67	04 Jun	17 Aug
70.200	<i>Acasis viretata</i>	YELLOW-BARRED BRINDLE	83	101	18 May	11 Sep
70.202	<i>Trichopteryx carpinata</i>	EARLY TOOTH-STRIPED	30	61	06 Apr	25 May
70.204	<i>Boudinotiana notha</i>	LIGHT ORANGE UNDERWING	1	1	18 Apr	18 Apr
70.205	<i>Abraxas grossulariata</i>	MAGPIE MOTH	340	752	19 May	22 Oct
70.207	<i>Lomaspilis marginata</i>	CLOUDED BORDER	217	365	05 May	20 Aug
70.208	<i>Ligdia adustata</i>	SCORCHED CARPET	70	86	24 Apr	05 Oct
70.211	<i>Macaria notata</i>	PEACOCK MOTH	1	1	07 Aug	07 Aug
70.212	<i>Macaria alternata</i>	SHARP-ANGLED PEACOCK	202	264	21 May	04 Sep

Code	Taxon	Vernacular	Records	Individuals	Earliest	Latest
70.214	<i>Macaria liturata</i>	TAWNY-BARRED ANGLE	36	210	29 Apr	15 Sep
70.217	<i>Macaria brunneata</i>	RANNOCH LOOPER	1	1	25 Jun	25 Jun
70.218	<i>Chiasmia clathrata</i>	LATTICED HEATH	1	1	19 Jul	19 Jul
70.221	<i>Cepphis advenaria</i>	LITTLE THORN	18	29	15 May	28 Jun
70.222	<i>Petrophora chlorosata</i>	BROWN SILVER-LINE	126	371	27 Apr	20 Jul
70.223	<i>Plagodis pulveraria</i>	BARRED UMBER	9	12	15 May	12 Jun
70.224	<i>Plagodis dolabraria</i>	SCORCHED WING	135	311	20 May	19 Jul
70.225	<i>Pachycnemia hippocastanaria</i>	HORSE CHESTNUT	26	50	10 Apr	05 Sep
70.226	<i>Opisthograptis luteolata</i>	BRIMSTONE MOTH	936	1562	24 Apr	29 Oct
70.227	<i>Epione repandaria</i>	BORDERED BEAUTY	60	68	28 Jun	05 Oct
70.229	<i>Pseudopanthera macularia</i>	SPECKLED YELLOW	8	14	30 May	27 Jun
70.230	<i>Angerona prunaria</i>	ORANGE MOTH	1	1	02 Jul	02 Jul
70.231	<i>Apeira syringaria</i>	LILAC BEAUTY	55	72	18 Jun	26 Sep
70.233	<i>Ennomos quercinaria</i>	AUGUST THORN	5	5	24 Jul	20 Aug
70.234	<i>Ennomos alniaria</i>	CANARY-SHOULDERED THORN	117	134	22 Jul	01 Nov
70.235	<i>Ennomos fuscantaria</i>	DUSKY THORN	181	245	27 Jul	31 Oct
70.236	<i>Ennomos erosaria</i>	SEPTEMBER THORN	15	26	02 Jul	07 Sep
70.237	<i>Selenia dentaria</i>	EARLY THORN	353	484	17 Mar	22 Oct
70.239	<i>Selenia tetralunaria</i>	PURPLE THORN	25	28	07 Apr	20 Sep
70.240	<i>Odontopera bidentata</i>	SCALLOPED HAZEL	82	171	04 May	07 Jul
70.241	<i>Crocallis elinguaris</i>	SCALLOPED OAK	320	491	25 Jun	29 Aug
70.243	<i>Ourapteryx sambucaria</i>	SWALLOW-TAILED MOTH	157	217	23 Jun	12 Aug
70.244	<i>Colotois pennaria</i>	FEATHERED THORN	80	153	20 Sep	10 Dec
70.245	<i>Alsophila aescularia</i>	MARCH MOTH	67	108	16 Feb	18 Apr
70.246	<i>Apocheima hispidaria</i>	SMALL BRINDLED BEAUTY	4	5	04 Mar	12 Mar
70.247	<i>Phigalia pilosaria</i>	PALE BRINDLED BEAUTY	17	21	05 Feb	17 Mar
70.248	<i>Lycia hirtaria</i>	BRINDLED BEAUTY	79	179	06 Apr	09 Jun
70.251	<i>Biston strataria</i>	OAK BEAUTY	66	93	27 Feb	08 May
70.252	<i>Biston betularia</i>	PEPPERED MOTH	235	397	05 May	16 Aug

<i>Code</i>	<i>Taxon</i>	<i>Vernacular</i>	<i>Records</i>	<i>Individuals</i>	<i>Earliest</i>	<i>Latest</i>
70.253	<i>Agriopsis leucophaearia</i>	SPRING USHER	6	7	19 Jan	02 Mar
70.254	<i>Agriopsis aurantiaria</i>	SCARCE UMBER	6	6	13 Nov	28 Dec
70.255	<i>Agriopsis marginaria</i>	DOTTED BORDER	49	70	16 Feb	15 May
70.256	<i>Erannis defoliaria</i>	MOTTLED UMBER	21	21	15 Jan	28 Dec
70.257	<i>Menophra abruptaria</i>	WAVED UMBER	76	83	18 Apr	08 Aug
70.258	<i>Peribatodes rhomboidaria</i>	WILLOW BEAUTY	840	1959	11 May	22 Oct
70.262	<i>Selidosema brunnearia</i>	BORDERED GREY	1	1	01 Aug	01 Aug
70.263	<i>Cleora cinctaria</i>	RINGED CARPET	9	20	05 May	21 May
70.264	<i>Deileptenia ribeata</i>	SATIN BEAUTY	13	53	30 Jun	31 Jul
70.265	<i>Alcis repandata</i>	MOTTLED BEAUTY	81	403	21 May	03 Aug
70.267	<i>Hypomecis roboraria</i>	GREAT OAK BEAUTY	1	1	02 Jul	02 Jul
70.268	<i>Hypomecis punctinalis</i>	PALE OAK BEAUTY	5	5	20 May	17 Jun
70.270	<i>Ectropis crepuscularia</i>	ENGRAILED	90	131	27 Mar	20 Aug
70.272	<i>Paradarisa consonaria</i>	SQUARE SPOT	7	13	08 May	24 Jun
70.273	<i>Parectropis similaria</i>	BRINDLED WHITE-SPOT	7	9	29 May	01 Jul
70.274	<i>Aethalura punctulata</i>	GREY BIRCH	9	21	21 May	05 Jun
70.275	<i>Ematurga atomaria</i>	COMMON HEATH	5	11	14 May	09 Jul
70.276	<i>Bupalus piniaria</i>	BORDERED WHITE	11	30	29 May	10 Jul
70.277	<i>Cabera pusaria</i>	COMMON WHITE WAVE	104	164	14 May	27 Aug
70.278	<i>Cabera exanthemata</i>	COMMON WAVE	213	287	27 Apr	14 Sep
70.279	<i>Lomographa bimaculata</i>	WHITE-PINION SPOTTED	16	18	15 May	18 Jun
70.280	<i>Lomographa temerata</i>	CLOUDED SILVER	232	379	04 May	02 Aug
70.282	<i>Theria primaria</i>	EARLY MOTH	32	37	02 Feb	12 Apr
70.283	<i>Campaea margaritaria</i>	LIGHT EMERALD	371	754	25 May	27 Oct
70.284	<i>Hylaea fasciaria</i>	BARRED RED	38	197	09 Jun	15 Aug
70.287	<i>Charissa obscurata</i>	ANNULET	8	19	20 Jul	22 Sep
70.288	<i>Cleorodes lichenaria</i>	BRUSSELS LACE	211	294	05 Jun	21 Oct
70.292	<i>Dyscia fagaria</i>	GREY SCALLOPED BAR	2	2	13 May	11 Jun
70.294	<i>Aspitates ochrearia</i>	YELLOW BELLE	57	70	17 May	27 Sep

<i>Code</i>	<i>Taxon</i>	<i>Vernacular</i>	<i>Records</i>	<i>Individuals</i>	<i>Earliest</i>	<i>Latest</i>
70.295	<i>Perconia strigillaria</i>	GRASS WAVE	4	8	14 Jun	21 Jul
70.297	<i>Pseudoterpna pruinata</i>	GRASS EMERALD	29	47	28 Jun	06 Aug
70.299	<i>Geometra papilionaria</i>	LARGE EMERALD	46	67	29 Jun	11 Aug
70.300	<i>Comibaena bajularia</i>	BLOTCHED EMERALD	18	81	18 Jun	09 Jul
70.302	<i>Hemistola chrysoprasaria</i>	SMALL EMERALD	71	95	23 Jun	01 Aug
70.303	<i>Jodis lactearia</i>	LITTLE EMERALD	7	9	05 Jun	07 Jul
70.305	<i>Hemithea aestivaria</i>	COMMON EMERALD	193	339	17 Jun	11 Aug
70.306	<i>Chlorissa viridata</i>	SMALL GRASS EMERALD	5	5	07 Jun	06 Jul
71.003	<i>Cerura vinula</i>	PUSS MOTH	40	40	27 Apr	10 Jul
71.005	<i>Furcula furcula</i>	SALLOW KITTEN	76	92	17 May	27 Aug
71.006	<i>Furcula bicuspis</i>	ALDER KITTEN	4	8	04 Jun	05 Jun
71.007	<i>Furcula bifida</i>	POPLAR KITTEN	9	10	21 May	14 Aug
71.009	<i>Stauropus fagi</i>	LOBSTER MOTH	78	165	09 May	29 Jul
71.010	<i>Drymonia dodonaea</i>	MARBLED BROWN	39	138	15 May	08 Jul
71.011	<i>Drymonia ruficornis</i>	LUNAR MARBLED BROWN	40	57	11 Apr	26 May
71.012	<i>Notodonta dromedarius</i>	IRON PROMINENT	113	145	28 Apr	31 Aug
71.013	<i>Notodonta ziczac</i>	PEBBLE PROMINENT	213	292	13 Apr	28 Aug
71.016	<i>Peridea anceps</i>	GREAT PROMINENT	64	116	08 Apr	05 Jun
71.017	<i>Pheosia tremula</i>	SWALLOW PROMINENT	125	154	24 Apr	02 Sep
71.018	<i>Pheosia gnoma</i>	LESSER SWALLOW PROMINENT	108	151	23 Apr	06 Sep
71.020	<i>Pterostoma palpina</i>	PALE PROMINENT	161	196	28 Apr	06 Sep
71.021	<i>Ptilodon capucina</i>	COXCOMB PROMINENT	58	75	05 May	07 Sep
71.023	<i>Odontosia carmelita</i>	SCARCE PROMINENT	4	5	01 May	08 May
71.025	<i>Phalera bucephala</i>	BUFF-TIP	251	388	05 May	05 Aug
71.027	<i>Clostera curtula</i>	CHOCOLATE-TIP	47	54	24 Apr	16 Aug
71.028	<i>Clostera pigra</i>	SMALL CHOCOLATE-TIP	1	1	17 May	17 May
72.001	<i>Scoliopteryx libatrix</i>	HERALD	71	73	Unavailable	Unavailable
72.002	<i>Rivula sericealis</i>	STRAW DOT	544	1419	05 May	28 Sep
72.003	<i>Hypena proboscidalis</i>	SNOUT	573	1011	29 May	04 Nov

<i>Code</i>	<i>Taxon</i>	<i>Vernacular</i>	<i>Records</i>	<i>Individuals</i>	<i>Earliest</i>	<i>Latest</i>
72.004	<i>Hypena rostralis</i>	BUTTONED SNOUT	2	2	01 Feb	05 Jun
72.006	<i>Hypena obsitalis</i>	BLOXWORTH SNOUT	2	2	01 Jun	12 Aug
72.007	<i>Hypena crassalis</i>	BEAUTIFUL SNOUT	11	13	04 Jun	30 Jul
72.009	<i>Leucoma salicis</i>	WHITE SATIN	6	7	30 Jun	05 Sep
72.010	<i>Lymantria monacha</i>	BLACK ARCHES	113	197	01 Jul	09 Sep
72.011	<i>Lymantria dispar</i>	GYPSY MOTH	1	1	25 Jun	25 Jun
72.012	<i>Euproctis chrysorrhoea</i>	BROWN-TAIL	105	254	14 Jun	18 Aug
72.013	<i>Euproctis similis</i>	YELLOW-TAIL	278	611	04 Jun	03 Sep
72.015	<i>Calliteara pudibunda</i>	PALE TUSOCK	198	536	28 Apr	16 Sep
72.016	<i>Dicallomera fascelina</i>	DARK TUSOCK	7	8	18 Jul	12 Aug
72.017	<i>Orgyia antiqua</i>	VAPOURER	22	23	08 Jul	27 Oct
72.019	<i>Spilosoma lutea</i>	BUFF ERMINE	816	2548	13 Apr	22 Oct
72.020	<i>Spilosoma lubricipeda</i>	WHITE ERMINE	407	1177	24 Apr	06 Oct
72.022	<i>Diaphora mendica</i>	MUSLIN MOTH	321	551	10 Apr	17 Aug
72.023	<i>Diacrisia sannio</i>	CLOUDED BUFF	10	12	17 Jun	07 Sep
72.024	<i>Phragmatobia fuliginosa</i>	RUBY TIGER	199	459	30 Apr	22 Oct
72.025	<i>Parasemia plantaginis</i>	WOOD TIGER	12	84	24 May	17 Jul
72.026	<i>Arctia caja</i>	GARDEN TIGER	157	354	16 Jun	30 Aug
72.027	<i>Arctia villica</i>	CREAM-SPOT TIGER	46	80	26 May	09 Jul
72.029	<i>Callimorpha dominula</i>	SCARLET TIGER	42	208	18 Jun	31 Jul
72.030	<i>Euplagia quadripunctaria</i>	JERSEY TIGER	109	195	19 Jul	31 Dec
72.031	<i>Tyria jacobaeae</i>	CINNABAR	111	161	18 May	10 Aug
72.032	<i>Coscinia cribraria</i>	SPECKLED FOOTMAN	2	2	01 Jul	10 Jul
72.035	<i>Miltochrista miniata</i>	ROSY FOOTMAN	250	443	28 Jun	01 Oct
72.036	<i>Nudaria mundana</i>	MUSLIN FOOTMAN	57	82	09 Jun	28 Jul
72.037	<i>Thumatha senex</i>	ROUND-WINGED MUSLIN	28	52	25 Jun	30 Jul
72.038	<i>Cybosia mesomella</i>	FOUR-DOTTED FOOTMAN	39	56	05 Jun	19 Jul
72.041	<i>Lithosia quadra</i>	FOUR-SPOTTED FOOTMAN	101	155	17 Jun	08 Oct
72.042	<i>Atolmis rubricollis</i>	RED-NECKED FOOTMAN	7	14	05 Jun	10 Jul

Code	Taxon	Vernacular	Records	Individuals	Earliest	Latest
72.043	<i>Eilema depressa</i>	BUFF FOOTMAN	95	295	14 Jun	04 Oct
72.044	<i>Eilema griseola</i>	DINGY FOOTMAN	390	1240	26 Jun	07 Oct
72.045	<i>Eilema lurideola</i>	COMMON FOOTMAN	499	2880	21 Jun	22 Oct
72.046	<i>Eilema complana</i>	SCARCE FOOTMAN	84	181	25 Jun	11 Aug
72.047	<i>Eilema caniola</i>	HOARY FOOTMAN	1	1	09 Sep	09 Sep
72.049	<i>Eilema sororcula</i>	ORANGE FOOTMAN	109	222	20 May	18 Aug
72.053	<i>Herminia tarsipennalis</i>	FAN-FOOT	221	381	12 Jun	07 Aug
72.055	<i>Herminia grisealis</i>	SMALL FAN-FOOT	120	176	01 Jun	06 Sep
72.060	<i>Hyenodes humidalis</i>	MARSH OBLIQUE-BARRED	2	25	30 Jul	30 Jul
72.061	<i>Schrankia costaestrigalis</i>	PINION-STREAKED SNOUT	26	30	05 Jun	05 Nov
72.062	<i>Schrankia taenialis</i>	WHITE-LINE SNOUT	1	2	09 Jul	09 Jul
72.063	<i>Lygephila pastinum</i>	BLACKNECK	23	25	19 Jun	30 Jul
72.066	<i>Parascotia fuliginaria</i>	WAVED BLACK	4	4	09 Jul	03 Aug
72.067	<i>Phytometra viridaria</i>	SMALL PURPLE-BARRED	20	45	11 May	30 Jul
72.069	<i>Laspeyria flexula</i>	BEAUTIFUL HOOK-TIP	169	292	17 Jun	05 Aug
72.076	<i>Catocala fraxini</i>	CLIFDEN NONPAREIL	15	17	05 Sep	09 Oct
72.078	<i>Catocala nupta</i>	RED UNDERWING	36	42	21 Aug	09 Oct
72.082	<i>Catocala promissa</i>	LIGHT CRIMSON UNDERWING	1	1	21 Aug	21 Aug
72.083	<i>Euclidia glyphica</i>	BURNET COMPANION	40	80	13 May	25 Jun
72.084	<i>Euclidia mi</i>	MOTHER SHIPTON	14	16	10 May	09 Jun
73.001	<i>Abrostola tripartita</i>	SPECTACLE	513	717	27 Apr	03 Oct
73.002	<i>Abrostola triplasia</i>	DARK SPECTACLE	71	79	19 May	07 Oct
73.010	<i>Macdunnoughia confusa</i>	DEWICK'S PLUSIA	4	4	19 Jul	01 Oct
73.012	<i>Diachrysia chrysitis</i>	BURNISHED BRASS	217	312	29 May	07 Oct
73.015	<i>Autographa gamma</i>	SILVER Y	878	2439	28 Apr	21 Nov
73.016	<i>Autographa pulchrina</i>	BEAUTIFUL GOLDEN Y	56	126	02 Jun	16 Jul
73.017	<i>Autographa jota</i>	PLAIN GOLDEN Y	70	96	09 Jun	07 Aug
73.022	<i>Plusia festucae</i>	GOLD SPOT	78	99	23 May	07 Oct
73.024	<i>Deltote pygarga</i>	MARBLED WHITE SPOT	80	341	25 May	01 Aug

<i>Code</i>	<i>Taxon</i>	<i>Vernacular</i>	<i>Records</i>	<i>Individuals</i>	<i>Earliest</i>	<i>Latest</i>
73.026	<i>Deltote uncula</i>	SILVER HOOK	4	4	24 Jun	21 Jul
73.031	<i>Tyta luctuosa</i>	FOUR-SPOTTED	7	7	24 May	09 Aug
73.032	<i>Colocasia coryli</i>	NUT-TREE TUSSOCK	181	244	06 Apr	09 Aug
73.033	<i>Diloba caeruleocephala</i>	FIGURE OF EIGHT	29	48	27 Sep	06 Nov
73.034	<i>Moma alpium</i>	SCARCE MERVEILLE DU JOUR	4	4	22 May	26 Jun
73.036	<i>Acronicta alni</i>	ALDER MOTH	58	189	28 Apr	09 Jul
73.038	<i>Acronicta psi</i>	GREY DAGGER	2	2	20 Jul	30 Jul
73.039	<i>Acronicta aceris</i>	SYCAMORE	36	51	18 May	07 Aug
73.040	<i>Acronicta leporina</i>	MILLER	50	65	21 May	30 Jul
73.045	<i>Acronicta rumicis</i>	KNOT GRASS	158	177	18 Apr	08 Oct
73.046	<i>Subacronicta megacephala</i>	POPLAR GREY	92	115	25 May	10 Sep
73.047	<i>Craniophora ligustri</i>	CORONET	247	548	21 May	22 Oct
73.048	<i>Panemeria tenebrata</i>	SMALL YELLOW UNDERWING	1	1	24 May	24 May
73.050	<i>Cucullia absinthii</i>	WORMWOOD	2	2	30 Jul	15 Aug
73.052	<i>Cucullia umbratica</i>	SHARK	88	101	24 Apr	08 Sep
73.053	<i>Cucullia chamomillae</i>	CHAMOMILE SHARK	3	3	05 May	17 May
73.058	<i>Cucullia verbasci</i>	MULLEIN	26	27	24 Apr	31 Jul
73.061	<i>Stilbia anomala</i>	ANOMALOUS	3	3	05 Sep	10 Sep
73.062	<i>Amphipyra pyramidea</i>	COPPER UNDERWING	69	84	08 Jul	29 Sep
73.063	<i>Amphipyra berbera</i>	SVENSSON'S COPPER UNDERWING	24	51	13 Jul	10 Sep
73.064	<i>Amphipyra tragopoginis</i>	MOUSE MOTH	21	22	25 Jul	16 Sep
73.065	<i>Asteroscopus sphinx</i>	SPRAWLER	8	115	04 Nov	24 Nov
73.068	<i>Allophyes oxyacanthae</i>	GREEN-BRINDLED CRESCENT	96	135	21 Sep	09 Nov
73.069	<i>Xylocampa areola</i>	EARLY GREY	267	557	13 Mar	08 Sep
73.070	<i>Pyrrhia umbra</i>	BORDERED SALLOW	28	34	25 May	15 Aug
73.074	<i>Heliothis peltigera</i>	BORDERED STRAW	13	13	08 Jun	03 Sep
73.076	<i>Helicoverpa armigera</i>	SCARCE BORDERED STRAW	41	58	21 Aug	04 Nov
73.084	<i>Bryophila domestica</i>	MARBLED BEAUTY	50	55	25 Jun	09 Sep
73.085	<i>Nyctobrya muralis</i>	MARBLED GREEN	52	61	13 Jul	21 Sep

<i>Code</i>	<i>Taxon</i>	<i>Vernacular</i>	<i>Records</i>	<i>Individuals</i>	<i>Earliest</i>	<i>Latest</i>
73.087	<i>Spodoptera exigua</i>	SMALL MOTTLED WILLOW	3	3	12 Jul	24 Aug
73.091	<i>Elaphria venustula</i>	ROSY MARBLED	3	3	05 Jun	29 Jun
73.092	<i>Caradrina morpheus</i>	MOTTLED RUSTIC	315	637	24 May	22 Oct
73.093	<i>Caradrina kadenii</i>	CLANCY'S RUSTIC	31	35	25 Jun	04 Nov
73.095	<i>Caradrina clavipalpis</i>	PALE MOTTLED WILLOW	198	253	14 May	31 Oct
73.096	<i>Hoplodrina octogenaria</i>	UNCERTAIN	1	28	02 Jul	02 Jul
73.099	<i>Hoplodrina ambigua</i>	VINE'S RUSTIC	800	6449	05 May	04 Nov
73.100	<i>Chilodes maritima</i>	SILKY WAINSCOT	16	21	31 May	03 Aug
73.101	<i>Charanyca trigrammica</i>	TREBLE LINES	324	1471	04 May	08 Jul
73.102	<i>Rusina ferruginea</i>	BROWN RUSTIC	67	105	24 May	01 Aug
73.105	<i>Dypterygia scabriuscula</i>	BIRD'S WING	26	30	01 Jun	20 Jul
73.106	<i>Trachea atriplicis</i>	ORACHE MOTH	1	1	19 Jul	19 Jul
73.107	<i>Mormo maura</i>	OLD LADY	17	17	24 Jul	09 Sep
73.109	<i>Thalpophila matura</i>	STRAW UNDERWING	112	243	26 Jul	12 Sep
73.113	<i>Phlogophora meticulosa</i>	ANGLE SHADES	329	399	27 Mar	24 Nov
73.114	<i>Euplexia lucipara</i>	SMALL ANGLE SHADES	100	138	01 Jun	03 Aug
73.119	<i>Helotropha leucostigma</i>	CRESCENT	10	13	07 Jul	04 Sep
73.120	<i>Eremobia ochroleuca</i>	DUSKY SALLOW	82	107	07 Jul	13 Aug
73.121	<i>Gortyna flavago</i>	FROSTED ORANGE	117	172	12 Jun	14 Oct
73.123	<i>Hydraecia micacea</i>	ROSY RUSTIC	353	662	10 Jul	04 Nov
73.127	<i>Amphipoea lucens</i>	LARGE EAR	1	1	09 Aug	09 Aug
73.131	<i>Luperina testacea</i>	FLOUNCED RUSTIC	337	1102	19 Jul	09 Oct
73.134	<i>Rhizedra lutosa</i>	LARGE WAINSCOT	69	88	27 Sep	21 Nov
73.136	<i>Nonagria typhae</i>	BULRUSH WAINSCOT	20	21	22 Jul	22 Oct
73.137	<i>Arenostola phragmitidis</i>	FEN WAINSCOT	24	29	08 Jul	13 Aug
73.139	<i>Lenisa geminipuncta</i>	TWIN-SPOTTED WAINSCOT	29	48	28 Jul	28 Aug
73.141	<i>Archanara dissoluta</i>	BROWN-VEINED WAINSCOT	37	69	19 Jul	12 Aug
73.142	<i>Coenobia rufa</i>	SMALL RUFIOUS	20	20	12 Jul	16 Aug
73.144	<i>Denticucullus pygmina</i>	SMALL WAINSCOT	51	57	10 Jul	19 Oct

<i>Code</i>	<i>Taxon</i>	<i>Vernacular</i>	<i>Records</i>	<i>Individuals</i>	<i>Earliest</i>	<i>Latest</i>
73.145	<i>Photodes fluxa</i>	MERE WAINSCOT	1	1	18 Jul	18 Jul
73.147	<i>Photodes minima</i>	SMALL DOTTED BUFF	23	49	26 May	31 Jul
73.148	<i>Photodes morrisii</i>	MORRIS'S WAINSCOT	1	9	25 Jun	25 Jun
73.151	<i>Globia sparganii</i>	WEBB'S WAINSCOT	4	11	03 Aug	17 Sep
73.154	<i>Apamea remissa</i>	DUSKY BROCADE	87	147	02 Jun	29 Aug
73.155	<i>Apamea epomidion</i>	CLOUDED BRINDLE	109	208	22 May	31 Jul
73.156	<i>Apamea crenata</i>	CLOUDED-BORDERED BRINDLE	89	245	14 May	01 Aug
73.157	<i>Apamea anceps</i>	LARGE NUTMEG	1	1	04 Jul	04 Jul
73.158	<i>Apamea sordens</i>	RUSTIC SHOULDER-KNOT	163	329	05 May	17 Aug
73.159	<i>Apamea unanimitis</i>	SMALL CLOUDED BRINDLE	55	85	21 May	16 Jul
73.160	<i>Apamea scolopacina</i>	SLENDER BRINDLE	19	27	26 Jun	06 Aug
73.162	<i>Apamea monoglypha</i>	DARK ARCHES	810	4329	24 May	22 Oct
73.163	<i>Apamea lithoxyloa</i>	LIGHT ARCHES	133	182	27 May	28 Jul
73.164	<i>Apamea sublustris</i>	REDDISH LIGHT ARCHES	20	58	12 Jun	19 Jul
73.168	<i>Laterologia ophiogramma</i>	DOUBLE LOBED	34	42	06 Jul	29 Aug
73.169	<i>Mesapamea secalis</i>	COMMON RUSTIC	1	30	02 Jul	02 Jul
73.171	<i>Litologia literosa</i>	ROSY MINOR	39	59	17 Jun	16 Aug
73.172	<i>Mesologia furuncula</i>	CLOAKED MINOR	81	108	22 Jun	04 Sep
73.174	<i>Oligia latruncula</i>	TAWNY MARBLED MINOR	1	6	02 Jul	02 Jul
73.176	<i>Oligia fasciuncula</i>	MIDDLE-BARRED MINOR	93	208	29 May	16 Aug
73.178	<i>Leucochlaena oditis</i>	BEAUTIFUL GOTHIC	18	25	08 Sep	10 Oct
73.179	<i>Tiliacea citrigo</i>	ORANGE SALLOW	10	10	03 Sep	07 Oct
73.180	<i>Tiliacea aurago</i>	BARRED SALLOW	98	235	28 Jun	11 Nov
73.181	<i>Xanthia togata</i>	PINK-BARRED SALLOW	79	151	12 Jan	18 Oct
73.182	<i>Cirrhia icteritia</i>	SALLOW	94	129	01 Aug	31 Oct
73.183	<i>Cirrhia gilvago</i>	DUSKY-LEMON SALLOW	1	1	26 Oct	26 Oct
73.184	<i>Cirrhia ocellaris</i>	PALE-LEMON SALLOW	1	1	08 Oct	08 Oct
73.186	<i>Agrochola lychnidis</i>	BEADED CHESTNUT	339	1229	16 Sep	23 Nov
73.187	<i>Agrochola litura</i>	BROWN-SPOT PINION	35	94	10 Sep	15 Oct

<i>Code</i>	<i>Taxon</i>	<i>Vernacular</i>	<i>Records</i>	<i>Individuals</i>	<i>Earliest</i>	<i>Latest</i>
73.188	<i>Agrochola helvola</i>	FLOUNCED CHESTNUT	5	5	06 Oct	02 Nov
73.189	<i>Agrochola lota</i>	RED-LINE QUAKER	115	164	Unavailable	Unavailable
73.190	<i>Agrochola macilenta</i>	YELLOW-LINE QUAKER	133	418	27 Sep	12 Dec
73.191	<i>Agrochola haematidea</i>	SOUTHERN CHESTNUT	4	5	11 Oct	03 Nov
73.192	<i>Agrochola circellaris</i>	BRICK	71	105	21 Sep	28 Dec
73.193	<i>Omphaloscelis lunosa</i>	LUNAR UNDERWING	384	1916	12 Aug	04 Nov
73.194	<i>Conistra vaccinii</i>	CHESTNUT	123	232	Unavailable	Unavailable
73.195	<i>Conistra ligula</i>	DARK CHESTNUT	35	39	Unavailable	Unavailable
73.197	<i>Conistra rubiginea</i>	DOTTED CHESTNUT	24	25	Unavailable	Unavailable
73.200	<i>Lithophane semibrunnea</i>	TAWNY PINION	9	9	Unavailable	Unavailable
73.201	<i>Lithophane socia</i>	PALE PINION	36	42	Unavailable	Unavailable
73.202	<i>Lithophane ornitopus</i>	GREY SHOULDER-KNOT	38	44	Unavailable	Unavailable
73.206	<i>Lithophane leautieri</i>	BLAIR'S SHOULDER-KNOT	134	266	12 Jan	22 Nov
73.209	<i>Xylena vetusta</i>	RED SWORD-GRASS	8	8	Unavailable	Unavailable
73.210	<i>Eupsilia transversa</i>	SATELLITE	63	75	Unavailable	Unavailable
73.212	<i>Ipimorpha retusa</i>	DOUBLE KIDNEY	6	6	13 Jul	18 Aug
73.213	<i>Ipimorpha subtusa</i>	OLIVE	2	2	16 Jul	17 Jul
73.216	<i>Cosmia trapezina</i>	DUN-BAR	197	413	26 Jun	04 Sep
73.217	<i>Cosmia pyralina</i>	LUNAR-SPOTTED PINION	17	17	05 Jun	17 Aug
73.219	<i>Atethmia centrigo</i>	CENTRE-BARRED SALLOW	42	53	28 Aug	23 Sep
73.220	<i>Brachylomia viminalis</i>	MINOR SHOULDER-KNOT	20	25	01 Jul	31 Jul
73.221	<i>Parastichtis suspecta</i>	SUSPECTED	7	10	01 Jul	31 Jul
73.222	<i>Apterogenum ypsilon</i>	DINGY SHEARS	17	17	28 Jun	24 Jul
73.223	<i>Dryobota labecula</i>	OAK RUSTIC	18	77	06 Oct	30 Oct
73.224	<i>Griposia aprilina</i>	MERVEILLE DU JOUR	59	82	03 Oct	12 Nov
73.225	<i>Dryobotodes eremita</i>	BRINDLED GREEN	46	55	05 Sep	03 Nov
73.227	<i>Dryobotodes tenebrosa</i>	SOMBRE BROCADE	2	3	09 Oct	19 Oct
73.229	<i>Trigonophora flammea</i>	FLAME BROCADE	4	4	09 Oct	30 Oct
73.230	<i>Aporophyla australis</i>	FEATHERED BRINDLE	53	159	09 Sep	28 Oct

<i>Code</i>	<i>Taxon</i>	<i>Vernacular</i>	<i>Records</i>	<i>Individuals</i>	<i>Earliest</i>	<i>Latest</i>
73.231	<i>Aporophyla lutulenta</i>	DEEP-BROWN DART	7	9	29 Aug	08 Oct
73.233	<i>Aporophyla nigra</i>	BLACK RUSTIC	229	655	05 Aug	13 Nov
73.234	<i>Dasypolia templi</i>	BRINDLED OCHRE	2	2	10 Oct	07 Nov
73.235	<i>Polymixis lichenea</i>	FEATHERED RANUNCULUS	164	504	14 Aug	31 Oct
73.237	<i>Polymixis flavicincta</i>	LARGE RANUNCULUS	11	17	09 Sep	22 Oct
73.241	<i>Panolis flammea</i>	PINE BEAUTY	46	58	17 Mar	05 Jun
73.242	<i>Orthosia incerta</i>	CLOUDED DRAB	226	573	12 Mar	08 Jun
73.243	<i>Orthosia miniosa</i>	BLOSSOM UNDERWING	6	16	12 Apr	24 Apr
73.244	<i>Orthosia cerasi</i>	COMMON QUAKER	549	2476	09 Mar	26 Jun
73.245	<i>Orthosia cruda</i>	SMALL QUAKER	192	868	16 Mar	03 Nov
73.246	<i>Orthosia populeti</i>	LEAD-COLOURED DRAB	3	6	05 Apr	09 Apr
73.247	<i>Orthosia gracilis</i>	POWDERED QUAKER	151	217	28 Mar	23 May
73.248	<i>Orthosia opima</i>	NORTHERN DRAB	1	1	05 May	05 May
73.249	<i>Orthosia gothica</i>	HEBREW CHARACTER	790	4401	27 Feb	10 Jul
73.250	<i>Anorthoa munda</i>	TWIN-SPOTTED QUAKER	75	186	17 Mar	08 May
73.252	<i>Tholera cespitis</i>	HEDGE RUSTIC	29	58	28 Aug	10 Oct
73.253	<i>Tholera decimalis</i>	FEATHERED GOTHIC	52	158	26 Aug	21 Sep
73.254	<i>Cerapteryx graminis</i>	ANTLER MOTH	16	19	25 Jul	04 Sep
73.255	<i>Anarta trifolii</i>	NUTMEG	53	69	18 May	10 Sep
73.257	<i>Anarta myrtilli</i>	BEAUTIFUL YELLOW UNDERWING	12	19	01 Jul	05 Sep
73.261	<i>Polia nebulosa</i>	GREY ARCHES	51	92	05 Jun	20 Jul
73.263	<i>Lacanobia w-latinum</i>	LIGHT BROCADE	43	56	08 May	23 Jul
73.264	<i>Lacanobia thalassina</i>	PALE-SHOULDERED BROCADE	21	52	15 May	15 Aug
73.265	<i>Lacanobia contigua</i>	BEAUTIFUL BROCADE	10	24	24 May	19 Oct
73.266	<i>Lacanobia suasa</i>	DOG'S TOOTH	14	22	05 May	20 Aug
73.267	<i>Lacanobia oleracea</i>	BRIGHT-LINE BROWN-EYE	684	1708	24 Apr	22 Oct
73.268	<i>Lacanobia splendens</i>	SPLENDID BROCADE	4	4	02 Jul	19 Jul
73.270	<i>Melanchra persicariae</i>	DOT MOTH	125	173	09 Jun	05 Sep
73.271	<i>Ceramica pisi</i>	BROOM MOTH	20	41	02 Jun	19 Jul

<i>Code</i>	<i>Taxon</i>	<i>Vernacular</i>	<i>Records</i>	<i>Individuals</i>	<i>Earliest</i>	<i>Latest</i>
73.273	<i>Hada plebeja</i>	SHEARS	50	80	14 May	13 Aug
73.274	<i>Mamestra brassicae</i>	CABBAGE MOTH	202	257	05 May	27 Sep
73.276	<i>Sideridis rivularis</i>	CAMPION	7	9	17 May	20 Aug
73.278	<i>Conisania andalusica</i>	BARRETT'S MARBLED CORONET	2	4	04 Jun	18 Jun
73.279	<i>Hecatera bicolorata</i>	BROAD-BARRED WHITE	13	15	16 Jun	06 Aug
73.281	<i>Hadena bicruris</i>	LYCHNIS	152	168	29 Apr	18 Sep
73.284	<i>Hadena albimacula</i>	WHITE SPOT	3	3	21 May	04 Jun
73.286	<i>Hadena perplexa</i>	TAWNY SHEARS	69	139	28 Apr	18 Sep
73.288	<i>Mythimna turca</i>	DOUBLE LINE	16	16	23 Jun	12 Jul
73.289	<i>Mythimna pudorina</i>	STRIPED WAINSCOT	15	55	11 Jun	03 Aug
73.290	<i>Mythimna conigera</i>	BROWN-LINE BRIGHT-EYE	52	189	23 Jun	15 Aug
73.291	<i>Mythimna favicolor</i>	MATHEW'S WAINSCOT	1	1	03 Sep	03 Sep
73.291	<i>Mythimna pallens</i>	COMMON WAINSCOT	749	2145	23 May	13 Oct
73.293	<i>Mythimna impura</i>	SMOKY WAINSCOT	429	1087	30 May	22 Oct
73.294	<i>Mythimna straminea</i>	SOUTHERN WAINSCOT	33	88	13 Jun	15 Aug
73.295	<i>Mythimna vitellina</i>	DELICATE	65	86	03 Jul	03 Nov
73.296	<i>Mythimna unipuncta</i>	WHITE-SPECK	8	8	22 Jun	22 Nov
73.297	<i>Mythimna albipuncta</i>	WHITE-POINT	509	1396	12 May	31 Oct
73.298	<i>Mythimna ferrago</i>	CLAY	273	527	04 Jun	19 Sep
73.300	<i>Mythimna l-album</i>	L-ALBUM WAINSCOT	223	395	04 Jun	13 Nov
73.301	<i>Leucania comma</i>	SHOULDER-STRIPED WAINSCOT	131	237	30 May	30 Jul
73.302	<i>Leucania obsoleta</i>	OBSCURE WAINSCOT	27	43	31 May	25 Jul
73.303	<i>Leucania putrescens</i>	DEVONSHIRE WAINSCOT	1	1	19 Jul	19 Jul
73.304	<i>Leucania loreyi</i>	COSMOPOLITAN	2	2	23 Oct	12 Nov
73.305	<i>Senta flammea</i>	FLAME WAINSCOT	4	5	20 May	27 Jun
73.307	<i>Peridroma saucia</i>	PEARLY UNDERWING	75	91	09 May	10 Nov
73.314	<i>Euxoa nigricans</i>	GARDEN DART	4	4	22 Jul	15 Aug
73.316	<i>Agrotis cinerea</i>	LIGHT FEATHERED RUSTIC	12	56	25 Apr	12 Jun
73.317	<i>Agrotis exclamationis</i>	HEART AND DART	1008	10754	14 May	28 Oct

<i>Code</i>	<i>Taxon</i>	<i>Vernacular</i>	<i>Records</i>	<i>Individuals</i>	<i>Earliest</i>	<i>Latest</i>
73.319	<i>Agrotis segetum</i>	TURNIP MOTH	225	338	18 Mar	23 Nov
73.320	<i>Agrotis clavis</i>	HEART AND CLUB	322	1321	29 May	27 Aug
73.322	<i>Agrotis vestigialis</i>	ARCHER'S DART	4	5	30 Jul	12 Aug
73.323	<i>Agrotis ripae</i>	SAND DART	1	1	01 Jul	01 Jul
73.324	<i>Agrotis trux</i>	CRESCENT DART	30	45	09 Jun	07 Oct
73.325	<i>Agrotis puta</i>	SHUTTLE-SHAPED DART	916	3393	23 Apr	03 Nov
73.327	<i>Agrotis ipsilon</i>	DARK SWORD-GRASS	354	993	21 Mar	05 Nov
73.328	<i>Axylia putris</i>	FLAME	484	1395	22 May	11 Sep
73.329	<i>Ochropleura plecta</i>	FLAME SHOULDER	1116	3119	21 Apr	22 Oct
73.332	<i>Diarsia brunnea</i>	PURPLE CLAY	36	51	04 Jun	26 Jul
73.333	<i>Diarsia mendica</i>	INGRAILED CLAY	226	514	28 Apr	16 Sep
73.334	<i>Diarsia rubi</i>	SMALL SQUARE-SPOT	318	804	23 May	08 Oct
73.336	<i>Cerastis rubricosa</i>	RED CHESTNUT	61	81	23 Mar	23 May
73.338	<i>Lycophotia porphyrea</i>	TRUE LOVER'S KNOT	69	205	01 Jun	15 Aug
73.341	<i>Standfussiana lucernea</i>	NORTHERN RUSTIC	1	1	18 Jun	18 Jun
73.342	<i>Noctua pronuba</i>	LARGE YELLOW UNDERWING	1344	9194	20 May	19 Nov
73.343	<i>Noctua fimbriata</i>	BROAD-BORDERED YELLOW UNDERWING	149	209	30 Jun	09 Oct
73.345	<i>Noctua comes</i>	LESSER YELLOW UNDERWING	414	877	12 Jan	28 Oct
73.346	<i>Noctua interjecta</i>	LEAST YELLOW UNDERWING	44	52	17 Jul	09 Oct
73.348	<i>Noctua janthe</i>	LESSER BROAD-BORDERED YELLOW UNDERWING	431	1900	01 Jul	28 Sep
73.352	<i>Anaplectoides prasina</i>	GREEN ARCHES	24	89	04 Jun	14 Jul
73.353	<i>Xestia baja</i>	DOTTED CLAY	3	4	07 Aug	27 Aug
73.355	<i>Xestia castanea</i>	NEGLECTED RUSTIC	3	4	08 Jul	27 Sep
73.356	<i>Xestia agathina</i>	HEATH RUSTIC	5	6	07 Sep	20 Sep
73.357	<i>Xestia xanthographa</i>	SQUARE-SPOT RUSTIC	556	2432	04 Jun	28 Oct
73.358	<i>Xestia sexstrigata</i>	SIX-STRIPED RUSTIC	149	378	21 Jul	10 Sep
73.359	<i>Xestia c-nigrum</i>	SETACEOUS HEBREW CHARACTER	1231	10592	12 May	08 Nov
73.361	<i>Xestia triangulum</i>	DOUBLE SQUARE-SPOT	178	350	20 Jun	09 Sep
73.365	<i>Eugnorisma glareosa</i>	AUTUMNAL RUSTIC	10	14	06 Aug	26 Oct

<i>Code</i>	<i>Taxon</i>	<i>Vernacular</i>	<i>Records</i>	<i>Individuals</i>	<i>Earliest</i>	<i>Latest</i>
73.368	<i>Naenia typica</i>	GOTHIC	26	33	18 Jun	22 Oct
74.001	<i>Meganola strigula</i>	SMALL BLACK ARCHES	2	7	26 Jun	26 Jun
74.002	<i>Meganola albula</i>	KENT BLACK ARCHES	102	145	25 Jun	22 Oct
74.003	<i>Nola cucullatella</i>	SHORT-CLOAKED MOTH	57	70	27 Jun	08 Oct
74.004	<i>Nola confusalis</i>	LEAST BLACK ARCHES	113	205	23 Apr	25 Jun
74.007	<i>Bena bicolorana</i>	SCARCE SILVER-LINES	10	10	29 Jun	07 Aug
74.008	<i>Pseudoips prasinana</i>	GREEN SILVER-LINES	61	108	03 Jun	09 Sep
74.009	<i>Nycteola revayana</i>	OAK NYCTEOLINE	21	26	06 Apr	27 Sep
74.011	<i>Earias clorana</i>	CREAM-BORDERED GREEN PEA	66	104	05 Jun	15 Aug

2010 Significant Resident and Migrant Species Report

Unless stated otherwise, all records are adult moths observed at light traps. Records with vague dates, undetermined records and critical species where there is doubt are excluded (although 10km square is reported). Also excluded are species where the number of recorded 10km squares >10 and the number of records per species is >25. Sites are removed from confidential species. Where no quantity is given, a single moth is assumed. All individual counts are minimum counts.

3.004 *Phymatopus hecta* (Linnaeus, 1758) **GOLD SWIFT** Local

Recorded in: ST40; ST70; SU10; SY79; SY99; SZ19. ST40/4907 Chedington Wood (ST4907); 02 Jul, leg. P Clarke (A Russell et al). ST70/7404 Melcombe Park (ST7404); 2 on 13 Jun (H G Wood Homer). SY79/7491 Boswell's Plantation (SY7491); 03 Jun (H G Wood Homer). SY99/9894 Upton Heath (SY9894); 20 Jul (D J Evans).

50.001 *Cossus cossus* (Linnaeus, 1758) **GOAT MOTH** Nb

Recorded in: SY98; SY99; SZ08. SY98/9189 Morden Bog (SY9189); 27 Jun, leg. P A Davey (D Kingman, P A Davey, V Giavarini, J Kingman). SY98/MT 0007 Wareham (SY9288); 17 Jun (R W Adams). SY99/9190 Morden Bog (SY9190); 27 Jun, leg. P A Davey (D Kingman, P A Davey, V Giavarini, J Kingman). SZ08/0288 Brownsea Island (SZ0288); field, larval on 04 Sep (P England).

50.003 *Phragmataecia castaneae* (Hübner, 1790) **REED LEOPARD** RDB2

Recorded in: SY89; SY98; SY99. SY89/8893 Bloxworth Heath (SY8893); 01 Jul, leg. P A Davey (D Kingman, P A Davey, J Kingman). SY98/9189 Morden Bog (SY9189); 6 on 27 Jun, leg. P A Davey (D Kingman, P A Davey, V Giavarini, J Kingman). SY99/004 Morden Bog and Hyde Heath SSSI (SY9190); 30 Jul, leg. P A Davey; 06 Jul (D Kingman, P A Davey, V Giavarini, J Kingman). SY99/9190 Morden Bog (SY9190); 27 Jun, leg. P A Davey; 30 Jul, leg. P A Davey (D Kingman, P A Davey, V Giavarini, J Kingman).

52.003 *Sesia bembeciformis* (Hübner, [1806]) **LUNAR HORNET MOTH**

Recorded in: SY58; SY78. SY58/5286 West Bexington (SY5286); field, 25 Jul (N A Croton). SY78/MT 0001 Broadmayne (SY7387); field, pupal on 01 Aug, leg. P H Sterling (R Walls).

52.007 *Synanthedon culiciformis* (Linnaeus, 1758) **LARGE RED-BELTED CLEARWING** Nb

Recorded in: SY88. SY88/8086 Winfrith Heath (SY8086); field, 6 larval on 27 Aug (D Foot).

52.008 *Synanthedon formicaeformis* (Esper, 1782) **RED-TIPPED CLEARWING** Nb

Recorded in: ST71. ST71/7310 Alners Gorse (ST7310); male on 06 Jul, leg. D Kingman; 4 males on 06 Jul, leg. D Kingman (D Kingman, J Kingman).

52.010 *Synanthedon andrenaeformis* (Laspeyres, 1801) **ORANGE-TAILED CLEARWING** Nb

Recorded in: ST71; ST90. ST90/9102 Spetisbury (ST9102); male on 29 Jun, leg. D Kingman; 3 males on 03 Jul, leg. D Kingman (D Kingman, J Kingman).

52.013 *Synanthedon tipuliformis* (Clerck, 1759) **CURRENT CLEARWING** Nb

Recorded in: SZ09. SZ09/0897 West Parley, Church Lane, Church Farm (SZ0897); male on 03 Jul (R R Cook).

52.014 *Bembecia ichneumoniformis* ([Denis & Schiffermüller], 1775) **SIX-BELTED CLEARWING** Nb

Recorded in: SY67. SY67/6972 Isle of Portland (SY6972); field, 4 on 25 Jun (D Kingman).

54.002 *Adscita statices* (Linnaeus, 1758) **FORESTER** Local

Recorded in: ST91; SY58; SY59; SY88. ST91/9019 Melbury Down and Wood (ST9019); field, 12 Jun; field, 17 Jun; field, 27 Jun (J Westgate). SY59/014 Wallis Farm SNCI (SY5999); field, 22 Jun (M S Parsons). SY88/8087 Winfrith Heath (SY8087); field, 12 Jun, leg. Mr A Neil; field, 2 on 17 Jun (Mr A Neil, Mrs A Neil). Valley of the Stones (SY5988); field, 07 Jun, leg. M S Parsons (J Davis).

54.003 *Adscita geryon* (Hübner, [1813]) **CISTUS FORESTER** Nb

Recorded in: ST60; SY59. ST60/003 Sydling Valley Downs SSSI (ST6400); field, 6 on 12 Jun (M S Parsons). SY59/014 Wallis Farm SNCI (SY5999); field, 22 Jun (M S Parsons).

54.010 *Zygaena trifolii* (Esper, 1783) **FIVE-SPOT BURNET** Local

Recorded in: ST61; ST81; ST91; SY59; SY78. ST61/030 Burton Common SNCI (ST6511); field, 4 on 19 Jun (R Smith). ST61/6610 Ryewater Farm (ST6610); field, 15 Jul (R Smith). ST81/8412 Hambledon Hill (ST8412); field, 25 on 05 Jun (Butterfly Conservation). ST81/8716 Fontmell Magna (ST8716); field, 7 on 20 Jun; field, 5 on 24 Jun (J

- Westgate). ST81/8817 Fontmell Down (ST8817); field, 11 Jun; field, 34 on 17 Jun; field, 41 on 24 Jun; field, 14 on 03 Jul (L de Whalley). ST91/9019 Melbury Down and Wood (ST9019); field, 9 on 12 Jun; field, 56 on 17 Jun; field, 5 on 27 Jun; field, 16 Jul; field, 8 on 23 Jul (J Westgate). SY59/5396 Powerstock Common (SY5396); field, 05 Jun (Butterfly Conservation). SY59/5497 Powerstock Common (SY5497); field, 11 Jun (M S Parsons). SY78/005 South Dorset Coast SSSI (SY7780); field, 2 on 19 Jun, leg. P H Sterling (P H Sterling, B P Henwood).
- 65.011 *Tethea or* ([Denis & Schiffermüller], 1775) **POPLAR LUTESTRING** Local
Recorded in: SU10. SU10/1008 Verwood (SU1008); 09 Jul (C Court).
- 66.005 *Eriogaster lanestris* (Linnaeus, 1758) **SMALL EGGAR** Nb
Recorded in: ST72; ST91; SY58; SY59; SY67; SY69; SY79. ST72/MT 0001 Gillingham (ST7925); 2 on 28 Mar (G R Hopkins). SY58/MT 0001 Puncknowle (SY5386); 21 Mar; 06 Apr (R Eden). SY59/040 Winterborne Poor Lot SSCI (SY5890); field, larval web on 14 Jun (M S Parsons). SY59/5594 Eggardon Hill (SY5594); field, larval web on 12 Jun (M S Parsons). SY67/MT 0004 Weymouth (SY6779); 21 Mar; 2 on 07 Apr (L Phillips). SY69/6390 Winterbourne Abbas (SY6390); field, larval web on 14 Jun (M S Parsons). SY79/7695 Puddletown (SY7695); 27 Mar; 06 Apr; field, larval web on 25 May (H G Wood Homer).
- 66.006 *Lasiocampa trifolii* ([Denis & Schiffermüller], 1775) **GRASS EGGAR** Na
Recorded in: SY66; SY79. SY66/MT 0001 Portland (SY6868); 13 Aug (M Cade). SY79/7695 Puddletown (SY7695); 19 Aug (H G Wood Homer).
- 69.004 *Agrius convolvuli* (Linnaeus, 1758) **CONVOLVULUS HAWK-MOTH** Migrant
Recorded in: SY49; SY58; SY66; SY67; SY79; SZ07. SY49/MT 0002 Bothenhampton (SY4892); 07 Sep; 12 Sep; 13 Sep; 03 Oct; 07 Oct (M S Parsons). SY58/MT 0001 Puncknowle (SY5386); 05 Aug; 24 Aug; 30 Aug; 03 Sep; 04 Sep; 06 Sep; 11 on 07 Sep; 2 on 08 Sep; 2 on 09 Sep; 6 on 11 Sep; 12 Sep; 3 on 14 Sep; 16 Sep; 19 Sep; 23 Sep; 2 on 11 Oct (R Eden). SY66/MT 0001 Portland (SY6868); 05 Jul; 03 Sep; 06 Sep; 07 Sep; 2 on 08 Sep; 2 on 11 Sep; 2 on 12 Sep; 13 Sep; 16 Sep; 17 Sep; 22 Sep; 23 Sep (M Cade). SY67/6970 Isle of Portland (SY6970); 26 Aug; 26 Aug (J Knowler). SY67/MT 0002 Weymouth (SY6676); 21 Aug (D Foot). SY79/7695 Puddletown (SY7695); 26 Aug; 03 Oct; 10 Oct (H G Wood Homer). SZ07/0377 Durlston Country Park (SZ0377); 05 Sep; field, 05 Sep; 2 on 08 Sep; 2 on 09 Oct (S Breeze). SZ07/MT 0002 Swanage (SZ0278); 11 Sep (P England).
- 69.005 *Acherontia atropos* (Linnaeus, 1758) **DEATH'S-HEAD HAWK-MOTH** Migrant
Recorded in: SY58; SZ09. SY58/MT 0001 Puncknowle (SY5386); 14 Sep (R Eden). SZ09/026 Ensbury Wood SSCI (SZ0896); field, larval on 10 Sep (R Blake).
- 69.008 *Hemaris tityus* (Linnaeus, 1758) **NARROW-BORDERED BEE HAWK-MOTH** Na
Recorded in: ST61; ST81; SU01; SY59. ST61/6610 Ryewater Farm (ST6610); field, 4 larval on 16 Jun (M S Parsons). ST81/8716 Fontmell Magna (ST8716); field, 23 May (W Raymond). SY59/5396 Powerstock Common (SY5396); field, 28 Apr; field, 12 May; field, 17 May; field, 6 on 24 May; field, 2 on 05 Jun; field, 06 Jun (J Cross). SY59/5497 Powerstock Common (SY5497); field, 2 on 11 Jun (M S Parsons). UKBMS Martin Down s. 10 (SU0518); field, 12 Jun (L Smith).
- 69.015 *Hyles livornica* (Esper, [1804]) **STRIPED HAWK-MOTH** Migrant
Recorded in: ST90; SY59; SY66; SY67; SY79. ST90/MT 0002 Spetisbury (ST9102); 20 Aug, leg. D Kingman (D Kingman, J Kingman). SY59/5497 Powerstock Common (SY5497); 04 Jun (N Spring). SY66/MT 0001 Portland (SY6868); 07 Sep; 08 Sep (M Cade). SY67/6870 Isle of Portland (SY6870); 09 Jun (D Saunders). SY79/7695 Puddletown (SY7695); 05 Jun (H G Wood Homer).
- 69.018 *Hippotion celerio* (Linnaeus, 1758) **SILVER-STRIPED HAWK-MOTH** Migrant
Recorded in: SY66. SY66/MT 0001 Portland (SY6868); 29 Sep (M Cade).
- 70.002 *Idaea muricata* (Hufnagel, 1767) **PURPLE-BORDERED GOLD** Nb
Recorded in: SU00; SY98; SY99; SZ08. SU00/0700 Ferndown (SU0700); 25 Jul (D Couzens). SY98/9485 Hartland Moor (SY9485); 28 Jun (G Freeman). SY99/9192 Morden Bog (SY9192); field, 2 on 08 Jul (G Freeman). SZ08/022 Godlingston-Studland Fields SSCI (SZ0282); field, 2 on 05 Jul (M S Parsons).
- 70.003 *Idaea ochrata* (Scopoli, 1763) **BRIGHT WAVE** RDB1
Recorded in: SY69. SY69/6792 Charminster (SY6792); 4 on 01 Jul (N Spring).
- 70.010 *Idaea sylvestraria* (Hübner, [1799]) **DOTTED BORDER WAVE** Nb
Recorded in: SY98. SY98/9089 Cold Harbour (SY9089); 5 on 09 Jul (M S Parsons). Wareham (SY9287); 19 Jul (A Ashworth).

- 70.015 *Idaea emarginata* (Linnaeus, 1758) **SMALL SCALLOP** Local
Recorded in: ST72. ST72/MT 0001 Gillingham (ST7925); 23 Jul (G R Hopkins).
- 70.017 *Idaea degeneraria* (Hübner, [1799]) **PORTLAND RIBBON WAVE** RDB3
Recorded in: SY39; SY58; SY67. SY39/MT 0001 Charmouth (SY3693); 10 Sep; 11 Sep; 12 Sep; 15 Sep; 16 Sep (G Sell). SY58/MT 0001 Puncknowle (SY5386); 24 Aug; 28 Aug; 23 Sep (R Eden). SY67/6870 Isle of Portland (SY6870); 17 Jun; 25 Jun (D Saunders). SY67/6972 Isle of Portland (SY6972); 4 on 25 Jun, leg. N Spring (N Spring, D Kingman).
- 70.025 *Scopula immutata* (Linnaeus, 1758) **LESSER CREAM WAVE** Local
Recorded in: ST61; SU01; SU10; SZ09; SZ19. Merley, Sopwith Crescent (SZ0298); 30 Jul (R W Steedman). SU01/0212 Wimborne St Giles (SU0212); 3 on 16 Jul (J C Winterbottom). SU01/0811 Gotham (SU0811); 11 Jul (C Hill). SU10/1008 Verwood (SU1008); 24 Jul (C Court). Yetminster, Shearstones (ST6010); 11 Jul; 05 Aug (C R Burningham).
- 70.028 *Scopula emutaria* (Hübner, [1809]) **ROSY WAVE** Nb
Recorded in: SY98; SY99. SY98/9189 Morden Bog (SY9189); 27 Jun, leg. P A Davey (D Kingman, P A Davey, V Giavarini, J Kingman). SY98/MT 0005 Arne (SY9585); 28 Jun (D Cooper). SY99/9190 Morden Bog (SY9190); 27 Jun, leg. P A Davey (D Kingman, P A Davey, V Giavarini, J Kingman).
- 70.030 *Cyclophora pendularia* (Clerck, 1759) **DINGY MOCHA** RDB3
Recorded in: ST71; SU00; SU10; SU11; SY89; SY98; SY99; SZ09; SZ19. English Farm (SU0907); beaten, larval on 31 Aug (B Noake). English Farm (SU0906); beaten, larval on 31 Aug (B Noake). Higher Hyde Heath (SY8590); beaten, larval on 02 Sep (M S Parsons). Moors Valley (SU1006); beaten, larval on 01 Sep (B Noake). ST71/7410 Rooksmoor (ST7410); beaten, larval on 26 Aug, leg. M S Parsons (M S Parsons, B Noake). ST71/7511 Deadmoor Common (ST7511); beaten, larval on 26 Aug (M S Parsons). SU00/001/11 Holt and West Moors Heaths (SMU 11) (SU0503); field, 2 larval on 29 Jun (M S Parsons). SU00/0502 Holt Heath (SU0502); beaten, larval on 24 Aug (M S Parsons). SU00/0502 White Sheet Plantation (SU0502); beaten, larval on 29 Jun, leg. M S Parsons; beaten, larval on 24 Aug, leg. M S Parsons (M S Parsons, B Noake). SU00/0503 White Sheet Plantation (SU0503); beaten, larval on 29 Jun, leg. M S Parsons; beaten, larval on 24 Aug, leg. M S Parsons (M S Parsons, B Noake). SU00/0504 Holt Heath (SU0504); 2 on 08 May (R R Cook). SU00/0602 Uddens Plantation (SU0602); beaten, larval on 24 Aug (M S Parsons). SU00/0603 White Sheet Plantation (SU0603); 10 on 21 May (K Tailby). SU11/MT 0001 Alderholt (SU1112); 08 Jun (T Morris). SY98/9189 Morden Bog (SY9189); 20 May, leg. P A Davey (D Kingman). SY99/9190 Morden Bog (SY9190); 20 May, leg. P A Davey (D Kingman). SZ09/MT 0001 Poole (SZ0097); 21 May (J Fradgley). Three Legged Cross (SU0805); beaten, larval on 31 Aug (B Noake). Uddens Plantation & Ferndown Forest (SU0501); beaten, larval on 24 Aug (M S Parsons). Uddens Plantation & Ferndown Forest (SU0602); beaten, larval on 24 Aug (M S Parsons).
- 70.031 *Cyclophora annularia* (Fabricius, 1775) **MOCHA** Nb
Recorded in: ST40; ST61; ST71; ST91; SU01; SU11; SY39; SY58; SY59; SY68; SZ07. ST40/4907 Chedington Wood (ST4907); 3 on 02 Jul, leg. P Clarke (A Russell et al). ST71/003 Lydlinch Common and Stock Wood SSSI (ST7313); 27 Aug, leg. C R Burningham (C R Burningham, D Kingman, L de Whalley, J Kingman). ST91/9517 Cranborne Chase (ST9517); 5 on 21 May, leg. P A Davey (P A Davey, T Morris). ST91/9618 Cranborne Chase (ST9618); 25 Jul, leg. P A Davey (D Kingman, P A Davey, J Kingman). SU01/0212 Wimborne St Giles (SU0212); 20 Jul (J C Winterbottom). SU11/MT 0001 Alderholt (SU1112); 24 May; 25 Jun (T Morris). SY39/MT 0001 Charmouth (SY3693); 23 Jun; 24 Jun (G Sell). SY58/MT 0001 Puncknowle (SY5386); 15 Aug; 18 Aug; 19 Aug (R Eden). SY59/5497 Powerstock Common (SY5497); 04 Jun (N Spring). SY68/MT 0006 Weymouth (SY6682); 20 May (P Harris). SZ07/0078 Langton Matravers, Leeson House (SZ0078); 29 Aug (J Knowler). SZ07/0078 Leeson House (SZ0078); 01 Aug (S W Smith). Yetminster, Shearstones (ST6010); 12 Jul; 13 Jul; 26 Jul; 05 Aug (C R Burningham).
- 70.038 *Rhodometra sacraria* (Linnaeus, 1767) **VESTAL** Migrant
Recorded in: SU11; SY49; SY58; SY66; SY67; SY68; SY79; SZ19. SU11/MT 0001 Alderholt (SU1112); 27 Aug (T Morris). SY49/MT 0002 Bothenhampton (SY4892); 21 Sep; 22 Sep; 06 Oct; 07 Oct (M S Parsons). SY58/5685 Abbotsbury (SY5685); 08 Oct, leg. M S Parsons (P H Sterling, M S Parsons). SY58/MT 0001 Puncknowle (SY5386); 22 Aug; 07 Sep; 2 on 08 Oct; 08 Nov (R Eden). SY66/MT 0001 Portland (SY6868); 27 Aug; 28 Aug; 08 Sep; 2 on 23 Sep; 27 Sep; 28 Sep (M Cade). SY67/6870 Isle of Portland (SY6870); 30 Aug (Portland Bird Observatory). SY67/6970 Isle of Portland (SY6970); 26 Aug; 26 Aug (J Knowler). SY67/MT 0004 Weymouth (SY6779); 23 Aug (L Phillips). SY68/MT 0002 Chickerell (SY6580); 06 Oct (C Pinder). SY68/MT 0006 Weymouth (SY6682); 22 Aug (P Harris). SY79/MT 0003 Tinctleton (SY7892); 22 Sep (R Cottle).
- 70.040 *Scotopteryx mucronata* (Scopoli, 1763) **LEAD BELLE**
Recorded in: SY68. SY68/6187 Blackdown (SY6187); 4 on 04 Jun (T A Box).
- 70.043 *Scotopteryx bipunctaria* ([Denis & Schiffermüller], 1775) **CHALK CARPET** Nb
Recorded in: ST81; SY39; SY48; SY67; SY68; SY78; SY87; SY88; SY97. ST81/8817 Fontmell Down (ST8817); field, 12 Jul; field, 6 on 26 Jul; field, 2 on 31 Jul; field, 5 on 08 Aug (W G Shreeves). ST81/8818 Clubmen's Down (ST8818);

field, 2 on 31 Jul (G Freeman). SY39/3593 Charmouth (SY3593); field, 4 on 30 Jul (M S Parsons). SY39/MT 0001 Charmouth (SY3693); 06 Jul; 07 Jul; 26 Jul; 27 Jul; 15 Aug; 16 Aug; 17 Aug; 18 Aug; 19 Aug; 20 Aug (G Sell). SY48/4988 Burton Bradstock (SY4988); field, 5 on 30 Jul (M S Parsons). SY67/6972 Isle of Portland (SY6972); field, 23 Jul (S Ellis). SY68/6981 Furzy Cliff (SY6981); field, 18 Aug (K Pradel). SY78/002 White Horse Hill SSSI (SY7284); field, 26 Aug (L de Whalley). SY87/005 South Dorset Coast SSSI (SY8679); field, 02 Aug (S Woodley). SY87/005 South Dorset Coast SSSI (SY8879); field, 02 Aug (K Pradel). SY88/005 South Dorset Coast SSSI (SY8180); field, 01 Sep (S Woodley). SY88/005 South Dorset Coast SSSI (SY8280); field, 2 on 21 Jul (K Pradel). SY88/005 South Dorset Coast SSSI (SY8380); field, 8 on 12 Aug (S Woodley). SY88/005 South Dorset Coast SSSI (SY8880); field, 3 on 02 Aug (S Woodley). SY97/005 South Dorset Coast SSSI (SY9477); field, 11 Aug (S Woodley). SY97/005 South Dorset Coast SSSI (SY9577); field, 6 on 11 Aug, leg. K Pradel (D Woodley, K Pradel). SY97/9378 Swyre Head (SY9378); field, 2 on 11 Aug, leg. K Pradel (D Woodley, K Pradel).

70.047 *Nycterosea obstipata* (Fabricius, 1794) **GEM Migrant**

Recorded in: SU00; SY58; SY66; SY68; SY79; SY88; SY98; SZ07; SZ09; SZ19. SU00/0700 Ferndown (SU0700); 24 Jul (D Couzens). SY58/5584 Abbotsbury (SY5584); 01 Nov (Unknown). SY58/MT 0001 Puncknowle (SY5386); 14 Jun; 06 Nov (R Eden). SY66/MT 0001 Portland (SY6868); 01 Jun; 05 Jun; 03 Oct (M Cade). SY68/MT 0002 Chickerell (SY6580); 22 Sep (C Pinder). SY68/MT 0006 Weymouth (SY6682); 24 May (P Harris). SY68/MT 0007 Weymouth (SY6982); 22 Jul ('Ricky' Lambert). SY79/7695 Puddletown (SY7695); 11 Jun; 01 Jul; 25 Jul (H G Wood Homer). SY88/MT 0004 East Holme (SY8986); 30 Apr (J H S Cox). SY98/MT 0004 Wareham Town (SY9287); 25 Jul (B Young). SZ07/MT 0001 Swanage (SZ0278); 10 Oct (R Cox). SZ09/MT 0001 Poole (SZ0097); 20 Jul (J Fradgley).

70.057 *Catarhoe rubidata* ([Denis & Schiffermüller], 1775) **RUDDY CARPET Nb**

Recorded in: SY39; SY79. SY39/MT 0001 Charmouth (SY3693); 29 Jun (G Sell). SY79/7695 Puddletown (SY7695); 30 Jun (H G Wood Homer).

70.062 *Epirrhoe rivata* (Hübner, [1813]) **WOOD CARPET Local**

Recorded in: ST30; ST40; ST61; ST91; SY39; SY49; SY58; SY66; SY79; SY98; SZ07. ST40/MT 0002 Beaminster (ST4801); 29 Jun, leg. M Raper (M Raper, D Raper). ST91/9015 Stubhampton Bottom (ST9015); 09 Jul, leg. P A Davey (D Kingman, P A Davey, J Kingman). SY39/3994 Morcombelake (SY3994); 10 Jul (A Bartlett). SY39/MT 0001 Charmouth (SY3693); 29 Jun; 30 Jun (G Sell). SY49/4491 Eype Mouth (SY4491); 18 Jun (P H Sterling). SY58/MT 0001 Puncknowle (SY5386); 11 Jul (R Eden). SY66/MT 0001 Portland (SY6868); 09 Sep (M Cade). SY79/7695 Puddletown (SY7695); 3 on 30 Jun; 2 on 11 Jul; 25 Jul; 26 Jul (H G Wood Homer). SY98/MT 0009 Corfe Castle (SY9881); 03 Jul; 2 on 04 Jul; 08 Jul; 09 Jul (D Gould). SZ07/005/41 South Dorset Coast (SMU 41) (SZ0377); 29 Jul (A Millar). SZ07/0377 Durlston Country Park (SZ0377); 27 Jul; 29 Jul (A Millar). Yetminster, Shearstones (ST6010); 20 Jun; 06 Jul; 07 Jul; 25 Aug; 28 Aug (C R Burningham).

70.063 *Epirrhoe galiata* ([Denis & Schiffermüller], 1775) **GALIUM CARPET Local**

Recorded in: ST90; SY49; SY58; SY67; SY68; SY79; SZ07. ST90/9602 Badbury Rings (ST9602); field, 03 Jul (Butterfly Conservation). SY49/4491 Eype Mouth (SY4491); 2 on 04 Jun, leg. P H Sterling (P H Sterling, D Foot). SY58/MT 0001 Puncknowle (SY5386); 18 May; 22 May; 26 May; 02 Jun; 11 Jun; 11 Jul; 2 on 07 Sep (R Eden). SY67/6870 Isle of Portland (SY6870); 30 May (D Saunders). SY67/6970 Isle of Portland (SY6970); 2 on 26 Aug; 4 on 26 Aug (J Knowler). SY67/MT 0002 Weymouth (SY6676); 16 Jun; 11 Jul; 19 Jul (D Foot). SY68/6187 Blackdown (SY6187); 04 Jun (T A Box). SY79/MT 0003 Tincton (SY7892); 12 Jun (R Cottle). SZ07/0078 Leeson House (SZ0078); 21 Sep (R Cox). SZ07/0277 Durlston Country Park (SZ0277); 5 on 19 Jul, leg. P A Davey (D Kingman, P A Davey, J Kingman). SZ07/0377 Durlston Country Park (SZ0377); field, 22 Aug (S Breeze).

70.064 *Euphyia biangulata* (Haworth, 1809) **CLOAKED CARPET Nb**

Recorded in: SU01; SU11; SY49; SY79; SY88; SY99. SU01/0811 Gotham (SU0811); 01 Jul (C Hill). SU11/MT 0001 Alderholt (SU1112); 26 Jul (T Morris). SY49/4892 Bridport (SY4892); field, dead on 21 Oct (J Clarke). SY79/7491 Boswell's Plantation (SY7491); 2 on 29 Jun; 17 Jul (H G Wood Homer). SY79/7695 Puddletown (SY7695); 30 Jul (H G Wood Homer). SY88/MT 0001 East Lulworth (SY8583); 19 Jul, leg. L J Hill (L J Hill, L McLellan). SY99/MT 0003 Lytchett Matravers (SY9395); 09 Jul (G Freeman).

70.068 *Mesoleuca albicillata* (Linnaeus, 1758) **BEAUTIFUL CARPET**

Recorded in: ST40; ST91; SY79; SY89; SY99. ST40/4907 Chedington Wood (ST4907); 02 Jul, leg. P Clarke (A Russell et al). ST91/9015 Stubhampton Bottom (ST9015); 09 Jul, leg. P A Davey (D Kingman, P A Davey, J Kingman). SY79/MT 0003 Tincton (SY7892); 25 Jul (R Cottle). SY89/8091 Bryants Puddle Heath (SY8091); 25 Jun (D Foot). SY99/9090 Cold Harbour (SY9090); 10 Jul (P A Davey).

70.070 *Larentia clavaria* (Haworth, 1809) **MALLOW**

Recorded in: SY49; SY58; SY88; SY98; SZ19. SY49/MT 0002 Bothenhampton (SY4892); 02 Oct (M S Parsons). SY58/5685 Abbotsbury (SY5685); 08 Oct, leg. M S Parsons (P H Sterling, M S Parsons). SY58/MT 0001 Puncknowle (SY5386); 01 Oct; 02 Oct; 03 Oct; 04 Oct; 06 Oct; 07 Oct; 09 Oct; 10 Oct; 11 Oct; 13 Oct; 14 Oct; 15 Oct; 27 Oct (R Eden). SY88/MT 0001 East Lulworth (SY8583); 06 Oct; 07 Oct (L J Hill). SY88/MT 0004 East Holme (SY8986); 27

- Sep (J H S Cox). SY88/MT 0010 East Lulworth (SY8582); 09 Oct (L J Hill). SY98/MT 0007 Wareham (SY9288); 07 Oct (R W Adams).
- 70.076 *Hydriomena ruberata* (Freyer, [1831]) **RUDDY HIGHFLYER** Local
Recorded in: ST30. ST30/MT 0001 Marshwood (ST3800); 2 on 22 May; 25 May (J Baker).
- 70.098 *Dysstroma citrata* (Linnaeus, 1761) **DARK MARBLED CARPET**
Recorded in: ST61; ST73; ST91; SY39. ST73/7931 Bagmore Wood (ST7931); 03 Jun (M Plaxton). ST91/9618 Cranborne Chase (ST9618); 25 Jul, leg. P A Davey (D Kingman, P A Davey, J Kingman). SY39/MT 0001 Charmouth (SY3693); 15 Sep; 08 Oct (G Sell). Yetminster, Shearstones (ST6010); 21 Jun (C R Burningham).
- 70.107 *Epirrita dilutata* ([Denis & Schiffermüller], 1775) **NOVEMBER MOTH**
Recorded in: SU00; SY88; SY89. SU00/0703 Hatchards Copse West Moors (SU0703); 13 on 28 Oct, gen. det. 4 on 28 Oct, gen. det. (D J Evans). SY88/MT 0010 East Lulworth (SY8582); 3 males on 12 Oct, gen. det. 5 males on 18 Oct, gen. det. 5 males on 21 Oct, gen. det. (L J Hill). SY89/008 Turners Puddle Heath SSSI (SY8291); male on 03 Nov, gen. det. male on 03 Nov, gen. det. (P H Sterling).
- 70.113 *Hydrelia sylvata* ([Denis & Schiffermüller], 1775) **WAVED CARPET** Nb
Recorded in: SY78. SY78/MT 0008 West Stafford (SY7289); 05 Jun, leg. E S Rose (E S Rose, A Rose).
- 70.129 *Anticollix sparsata* (Treitschke, 1828) **DENTATED PUG** Na
Recorded in: SU00; SU10. SU00/0502 Holt Heath (SU0502); field, larval on 24 Aug (M S Parsons). SU00/0602 Uddens Plantation (SU0602); field, larval on 24 Aug (M S Parsons). SU10/1008 Verwood (SU1008); 01 Jul (C Court).
- 70.130 *Odezia atrata* (Linnaeus, 1758) **CHIMNEY SWEEPER**
Recorded in: SU01; SY59. SY59/5599 Kingcombe Meadows (SY5598); field, 12 on 11 Jun (S Guy). UKBMS Martin Down s. 11 (SU0518); 2 on 26 Jun (L Smith).
- 70.131 *Mesotype didymata* (Linnaeus, 1758) **TWIN-SPOT CARPET**
Recorded in: SY58; SY79. SY58/MT 0001 Puncknowle (SY5386); 16 Aug (R Eden). SY79/7491 Boswell's Plantation (SY7491); 03 Aug (H G Wood Homer).
- 70.134 *Perizoma bifaciata* (Haworth, 1809) **BARRED RIVULET** Local
Recorded in: SY67; SY88; SY98; SZ07. SY67/6870 Isle of Portland (SY6870); 28 Jul (D Saunders). SY88/MT 0001 East Lulworth (SY8583); 26 Jul, leg. L J Hill (L J Hill, L McLellan). SY98/MT 0009 Corfe Castle (SY9881); 08 Aug (D Gould). SZ07/0277 Durlston Country Park (SZ0277); 19 Jul, leg. P A Davey (D Kingman, P A Davey, J Kingman).
- 70.137 *Perizoma albulata* ([Denis & Schiffermüller], 1775) **GRASS RIVULET** Local
Recorded in: SZ07. SZ07/0377 Durlston Country Park (SZ0377); 22 May; 20 on 05 Jun; 09 Jun, leg. P A Davey; 10 Jun; field, 18 Jun (S Breeze). SZ07/MT 0002 Swanage (SZ0278); 11 Jun (P England).
- 70.143 *Pasiphila chloerata* (Mabille, 1870) **SLOE PUG**
Recorded in: ST71; ST90; SY58; SY67; SY68; SY79; SY89. ST71/7310 Alners Gorse (ST7310); 2 on 26 May (N Spring). ST90/MT 0002 Spetisbury (ST9102); 23 Jun, leg. D Kingman (D Kingman, J Kingman). SY58/MT 0001 Puncknowle (SY5386); 07 Jun; 11 Jun, leg. P H Sterling; 15 Jun; 16 Jun, leg. P H Sterling; 17 Jun, leg. P H Sterling; 18 Jun; 20 Jun; 21 Jun; 22 Jun; 24 Jun; 25 Jun; 26 Jun, leg. P H Sterling; 28 Jun; 03 Jul, leg. P H Sterling (R Eden). SY67/MT 0004 Weymouth (SY6779); 08 Jun; 2 on 17 Jun; 3 on 23 Jun; 24 Jun; 27 Jun (L Phillips). SY68/MT 0002 Chickerell (SY6580); 28 Jun; 01 Jul; 04 Jul; 2 on 05 Jul; 13 Jul; 26 Jul (C Pinder). SY79/7695 Puddletown (SY7695); 03 Jun (H G Wood Homer). SY89/8893 Bloxworth Heath (SY8893); 01 Jul, leg. P A Davey (D Kingman, P A Davey, J Kingman).
- 70.149 *Eupithecia abietaria* (Goeze, 1781) **CLOAKED PUG** Local(alien-foodplant)
Recorded in: ST40. ST40/4901 Cheddington Woods (ST4901); field, larval on 17 Sep (M S Parsons). ST40/4907 Cheddington Wood (ST4907); 6 on 02 Jul, leg. P Clarke; field, 15 larval on 02 Sep, leg. P H Sterling (A Russell et al).
- 70.150 *Eupithecia linariata* ([Denis & Schiffermüller], 1775) **TOADFLAX PUG**
Recorded in: ST40; ST61; SY58; SY79; SY98; SZ19. ST40/MT 0001 Beaminster (ST4701); 22 Jun; 06 Aug (S Philp). SY58/MT 0001 Puncknowle (SY5386); 25 Jun (R Eden). SY79/MT 0003 Tincleton (SY7892); 02 Jul (R Cottle). SY98/MT 0007 Wareham (SY9288); 24 Jun (R W Adams). Yetminster, Shearstones (ST6010); 23 Jun (C R Burningham).

- 70.152 *Eupithecia ultimaria* Boisduval, 1840 **CHANNEL ISLANDS PUG** Local(alien-foodplant)
Recorded in: SY58; SY66; SY68. SY58/5684 Abbotsbury (SY5684); outside light, 3 on 22 Aug; field, 3 on 08 Sep, leg. D Kingman (T A Box). SY58/5685 Knolls (SY5685); 7 on 21 Aug; 11 Sep (P Harris). SY58/MT 0001 Puncknowle (SY5386); 04 Jun, leg. P H Sterling; 11 Jun, leg. P H Sterling (R Eden). SY66/MT 0001 Portland (SY6868); 08 Aug (M Cade). SY68/003 Chesil and the Fleet SSSI (SY6180); beaten, larval on 18 Sep (P H Sterling). SY68/MT 0006 Weymouth (SY6682); 16 Aug (P Harris).
- 70.153 *Eupithecia plumbeolata* (Haworth, 1809) **LEAD-COLOURED PUG** Nb
Recorded in: ST71. ST71/7912 Piddles Wood (ST7912); 10 on 26 Jun; 10 on 26 Jun (M S Parsons).
- 70.155 *Eupithecia venosata* (Fabricius, 1787) **NETTIED PUG** Local
Recorded in: SY66. SY66/MT 0001 Portland (SY6868); 09 Jun (M Cade).
- 70.161 *Eupithecia virgaureata* Doubleday, 1861 **GOLDEN-ROD PUG** Local
Recorded in: SY98. SY98/MT 0009 Corfe Castle (SY9881); 15 Aug; 03 Sep (D Gould).
- 70.169 *Eupithecia innotata* (Hufnagel, 1767) **ANGLE-BARRED PUG** Unconfirmed
Recorded in: ST40; ST61; SY58; SZ07. ST40/4907 Chedington Wood (ST4907); 02 Jul, leg. P Clarke (A Russell et al). SY58/MT 0001 Puncknowle (SY5386); 20 Jun, leg. P H Sterling (R Eden). SZ07/MT 0002 Swanage (SZ0278); 11 Jun (P England). Yetminster, Shearstones (ST6010); 09 Jun; 01 Jun (C R Burningham).
- 70.174 *Eupithecia insigniata* (Hübner, 1790) **PINION-SPOTTED PUG** Nb
Recorded in: ST90. ST90/MT 0001 Shapwick (ST9501); 19 May (P A Davey).
- 70.177 *Eupithecia satyrata* (Hübner, [1813]) **SATYR PUG**
Recorded in: SY79. SY79/7695 Puddletown (SY7695); 13 Jul; 19 Jul (H G Wood Homer).
- 70.181 *Eupithecia valerianata* (Hübner, [1813]) **VALERIAN PUG** Nb
Recorded in: ST91. ST91/9015 Stubhampton Bottom (ST9015); 2 on 09 Jul, leg. P A Davey (D Kingman, P A Davey, J Kingman).
- 70.188 *Eupithecia succenturiata* (Linnaeus, 1758) **BORDERED PUG**
Recorded in: SY67; SY79. SY67/6870 Isle of Portland (SY6870); 21 Jun; 22 Jun (D Saunders). SY79/7695 Puddletown (SY7695); 10 Jul; 19 Jul; 24 Jul; 28 Jul; 29 Jul; 31 Jul (H G Wood Homer).
- 70.204 *Boudinotiana notha* (Hübner, [1803]) **LIGHT ORANGE UNDERWING** Nb
Recorded in: ST82. ST82/8222 Duncliffe Wood (ST8222); field, 18 Apr (G R Hopkins).
- 70.211 *Macaria notata* (Linnaeus, 1758) **PEACOCK MOTH** Local
Recorded in: SY78. SY78/MT 0008 West Stafford (SY7289); 07 Aug, leg. E S Rose (E S Rose, A Rose).
- 70.217 *Macaria brunneata* (Thunberg, 1784) **RANNOCH LOOPER** Na
Recorded in: ST70. ST70/7404 Melcombe Park (ST7404); 25 Jun (H G Wood Homer).
- 70.218 *Chiasmia clathrata* (Linnaeus, 1758) **LATTICED HEATH**
Recorded in: SY66. SY66/MT 0001 Portland (SY6868); 19 Jul (M Cade).
- 70.221 *Cepphis advenaria* (Hübner, 1790) **LITTLE THORN** Nb
Recorded in: SU00; SY68; SY79; SY88; SZ19. SU00/0703 Gulliver's Farm (SU0703); 15 May (D J Evans). SU00/0703 Hatchards Copse West Moors (SU0703); 15 May (D J Evans). SY68/MT 0006 Weymouth (SY6682); 25 Jun (P Harris). SY79/7491 Boswell's Plantation (SY7491); 18 May; 7 on 03 Jun (H G Wood Homer). SY79/7695 Puddletown (SY7695); 26 May; 04 Jun; 05 Jun (H G Wood Homer). SY79/MT 0003 Tincton (SY7892); 3 on 22 May; 25 May; 3 on 30 May; field, 03 Jun; 04 Jun; 2 on 05 Jun; field, 05 Jun; 12 Jun (R Cottle). SY88/MT 0001 East Lulworth (SY8583); 08 Jun; 28 Jun (M S Parsons).
- 70.230 *Angerona prunaria* (Linnaeus, 1758) **ORANGE MOTH** Local
Recorded in: ST40. ST40/4907 Chedington Wood (ST4907); 02 Jul, leg. P Clarke (A Russell et al).
- 70.233 *Ennomos quercinaria* (Hufnagel, 1767) **AUGUST THORN** Local
Recorded in: ST73; SY78; SY79; SY88; SY98. Broadmayne, Spring Gardens (SY7387); 20 Aug (P Bruce-Jones). ST73/7931 Bagmore Wood (ST7931); 27 Jul, leg. J Burge (M Plaxton). SY79/7695 Puddletown (SY7695); 14 Aug (H G

- Wood Homer). SY88/MT 0004 East Holme (SY8986); 07 Aug (J H S Cox). SY98/MT 0010 Steeple (SY9180); 24 Jul (P Ward).
- 70.236 *Ennomos erosaria* ([Denis & Schiffermüller], 1775) **SEPTEMBER THORN**
Recorded in: SU00; SU01; SU11; SZ19. SU00/0703 Hatchards Copse West Moors (SU0703); 07 Aug (D J Evans). SU00/MT 0004 Ferndown Town (SU0800); 11 Jul (R R Cook). SU01/0811 Gotham (SU0811); 08 Jul (C Hill). SU11/MT 0001 Alderholt (SU1112); 02 Jul; 2 on 12 Jul; 2 on 17 Jul; 4 on 19 Jul; 4 on 23 Jul; 26 Jul; 01 Aug; 2 on 07 Aug; 27 Aug; 2 on 31 Aug; 03 Sep; 2 on 07 Sep (T Morris).
- 70.246 *Apocheima hispidaria* ([Denis & Schiffermüller], 1775) **SMALL BRINDLED BEAUTY** Local
Recorded in: SU01; SU11. SU01/0212 Wimborne St Giles (SU0212); 12 Mar (J C Winterbottom). SU01/0811 Gotham (SU0811); 04 Mar (C Hill). SU11/MT 0001 Alderholt (SU1112); 09 Mar; 2 on 12 Mar (T Morris).
- 70.262 *Selidosema brunnearia* (Villers, 1789) **BORDERED GREY** Na
Recorded in: SY99. SY99/004 Morden Bog and Hyde Heath SSSI (SY9191); field, 01 Aug, leg. D Kingman (D Kingman, J Kingman).
- 70.263 *Cleora cinctaria* ([Denis & Schiffermüller], 1775) **RINGED CARPET** Na
Recorded in: SU00; SU10; SU11; SY79; SY89; SY98; SY99; SZ19. SU00/0603 White Sheet Plantation (SU0603); 3 on 21 May (K Tailby). SU10/1008 Verwood (SU1008); 05 May (C Court). SU11/MT 0001 Alderholt (SU1112); 05 May; 07 May (T Morris). SY79/7695 Puddletown (SY7695); 15 May (H G Wood Homer). SY89/8091 Bryants Puddle Heath (SY8091); 15 May (D Foot). SY98/9189 Morden Bog (SY9189); 10 on 20 May, leg. P A Davey (D Kingman). SY98/MT 0005 Arne (SY9585); 18 May (D Cooper). SY99/9190 Morden Bog (SY9190); 20 May, leg. P A Davey (D Kingman).
- 70.267 *Hypomecis roboraria* ([Denis & Schiffermüller], 1775) **GREAT OAK BEAUTY** Nb
Recorded in: ST40. ST40/4907 Chedington Wood (ST4907); 02 Jul, leg. A Russell (A Russell et al).
- 70.274 *Aethalura punctulata* ([Denis & Schiffermüller], 1775) **GREY BIRCH**
Recorded in: ST91; SU00; SU11; SY59; SY98; SZ19. ST91/9517 Cranborne Chase (ST9517); 21 May, leg. P A Davey (P A Davey, T Morris). SU00/0603 White Sheet Plantation (SU0603); 10 on 21 May (K Tailby). SU11/MT 0001 Alderholt (SU1112); 4 on 24 May; 25 May; 05 Jun (T Morris). SY59/5497 Powerstock Common (SY5497); 04 Jun (N Spring). SY59/5599 Lower Kingcombe (SY5599); 04 Jun; 05 Jun (N Spring). SY98/MT 0005 Arne (SY9585); 25 May (D Cooper).
- 70.287 *Charissa obscurata* ([Denis & Schiffermüller], 1775) **ANNULET** Local
Recorded in: SY39; SY67; SY99; SZ07. SY39/MT 0001 Charmouth (SY3693); 10 Aug (G Sell). SY67/6970 Isle of Portland (SY6970); 4 on 26 Aug; 7 on 26 Aug (J Knowler). SY99/004 Morden Bog and Hyde Heath SSSI (SY9190); 2 on 30 Jul, leg. P A Davey (D Kingman, P A Davey, V Giavarini, J Kingman). SY99/9190 Morden Bog (SY9190); 30 Jul, leg. P A Davey (D Kingman, P A Davey, V Giavarini, J Kingman). SY99/9994 Upton Heath (SY9994); 2 on 20 Jul (D J Evans). SZ07/0078 Leeson House (SZ0078); 22 Sep (R Cox). SZ07/0377 Durlston Country Park (SZ0377); 01 Sep (D C G Brown).
- 70.292 *Dyscia fagaria* (Thunberg, 1784) **GREY SCALLOPED BAR** Local
Recorded in: SY98; SY99. SY98/MT 0005 Arne (SY9585); 13 May (D Cooper). SY99/004 Morden Bog and Hyde Heath SSSI (SY9191); field, 11 Jun, leg. D Kingman (D Kingman, J Kingman).
- 70.306 *Chlorissa viridata* (Linnaeus, 1758) **SMALL GRASS EMERALD** Na
Recorded in: SY67; SY99; SZ09. SY67/6870 Isle of Portland (SY6870); 17 Jun (D Saunders). SY99/9895 Upton Heath (SY9895); field, 06 Jul (G Freeman). SZ09/002 Canford Heath SSSI (SZ0195); field, 07 Jun (V Giavarini). SZ09/MT 0001 Poole (SZ0097); 25 Jun (J Fradgley).
- 71.006 *Furcula bicuspis* (Borkhausen, 1790) **ALDER KITTEN** Local
Recorded in: ST40; SY59. ST40/MT 0002 Beaminster (ST4801); 04 Jun, leg. M Raper (M Raper, D Raper). SY59/5497 Powerstock Common (SY5497); 05 Jun (N Spring). SY59/5599 Lower Kingcombe (SY5599); 3 on 04 Jun; 3 on 05 Jun (N Spring).
- 71.023 *Odontostia carmelita* (Esper, [1798]) **SCARCE PROMINENT** Local
Recorded in: SU00; SU11; SY79; SZ19. SU00/0504 Holt Heath (SU0504); 08 May (R R Cook). SU11/MT 0001 Alderholt (SU1112); 2 on 05 May (T Morris). SY79/MT 0003 Tinctleton (SY7892); 01 May; 05 May (R Cottle).

- 71.028 *Clostera pigra* (Hufnagel, 1766) **SMALL CHOCOLATE-TIP** Nb
Recorded in: SY98. SY98/MT 0005 Arne (SY9585); 17 May (D Cooper).
- 72.004 *Hypena rostralis* (Linnaeus, 1758) **BUTTONED SNOUT** Nb
Recorded in: SU01; SU10. SU01/0212 Wimborne St Giles (SU0212); 01 Feb (J C Winterbottom). SU10/1008 Verwood (SU1008); 05 Jun (C Court).
- 72.006 *Hypena obsitalis* (Hübner, [1813]) **BLOXWORTH SNOUT** RDB3
Recorded in: SY67. SY67/MT 0002 Weymouth (SY6676); 01 Jun; 12 Aug (D Foot).
- 72.007 *Hypena crassalis* (Fabricius, 1787) **BEAUTIFUL SNOUT** Local
Recorded in: ST91; SU01; SU10; SY68; SY79; SY89. ST91/9015 Stubhampton Bottom (ST9015); 09 Jul, leg. P A Davey (D Kingman, P A Davey, J Kingman). SU01/0811 Gotham (SU0811); 20 Jul (C Hill). SU10/1008 Verwood (SU1008); 09 Jul (C Court). SY68/6187 Blackdown (SY6187); 2 on 04 Jun (T A Box). SY68/MT 0002 Chickerell (SY6580); 09 Jul (C Pinder). SY79/7695 Puddletown (SY7695); 2 on 06 Jul; 07 Jul; 18 Jul; 30 Jul (H G Wood Homer). SY89/8093 Affpuddle (SY8093); 10 Jul (A Middleton). SY89/8893 Bloxworth Heath (SY8893); 01 Jul, leg. P A Davey (D Kingman, P A Davey, J Kingman).
- 72.009 *Leucoma salicis* (Linnaeus, 1758) **WHITE SATIN** Local
Recorded in: ST90; SU11; SY39; SY68; SZ07; SZ19. ST90/MT 0002 Spetisbury (ST9102); 05 Sep, leg. D Kingman (D Kingman, J Kingman). SU11/MT 0001 Alderholt (SU1112); 2 on 12 Jul (T Morris). SY39/3396 Monkton Wyld (SY3396); 16 Jul (A Kennard). SY68/MT 0007 Weymouth (SY6982); 30 Jun ('Ricky' Lambert). SZ07/MT 0001 Swanage (SZ0278); 02 Jul; 20 Jul (R Cox).
- 72.011 *Lymantria dispar* (Linnaeus, 1758) **GYPSY MOTH** Vagrant/Accidental
Recorded in: ST30. ST30/MT 0001 Marshwood (ST3800); 25 Jun (J Baker).
- 72.016 *Dicallomera fuscilina* (Linnaeus, 1758) **DARK TUSSOCK** Local
Recorded in: ST90; SY79; SY98; SZ08; SZ09. ST90/MT 0002 Spetisbury (ST9102); 22 Jul, leg. D Kingman (D Kingman, J Kingman). SY79/7695 Puddletown (SY7695); 26 Jul (H G Wood Homer). SY98/9485 Hartland Moor (SY9485); 2 on 12 Aug (G Freeman). SY98/MT 0007 Wareham (SY9288); 18 Jul (R W Adams). SZ08/0384 Studland (SZ0384); field, 21 Jul (G Freeman). SZ09/MT 0001 Poole (SZ0097); 20 Jul (J Fradgley).
- 72.025 *Parasemia plantaginis* (Linnaeus, 1758) **WOOD TIGER** Local
Recorded in: ST60; ST81; ST82; ST91; SY59; SY67; SY69; SY88. ST60/6000 Lankham Bottom (ST6000); 10 on 02 Jul, leg. N Spring (N Spring, L de Whalley). ST60/6100 Lankham Bottom (ST6100); field, 25 on 12 Jun (M S Parsons). ST81/8817 Fontmell Down (ST8817); field, 03 Jun; field, 11 Jun; field, 24 Jun; field, 17 Jul (J Westgate). ST82/001/01 Fontmell and Melbury Downs (SMU 1) (ST8920); field, 24 May (W Raymond). ST91/9019 Melbury Down and Wood (ST9019); field, 12 Jun (J Westgate). SY59/5494 Eggardon Hill (SY5494); field, 05 Jun (Butterfly Conservation). SY67/6972 Isle of Portland (SY6972); field, 17 Jun (Portland Bird Observatory). SY69/6199 Folly Hill (SY6199); field, 40 on 06 Jun (Butterfly Conservation). SY88/8086 Blacknoll (SY8086); field, 06 Jun (A Middleton).
- 72.032 *Coscinia cribraria* (Linnaeus, 1758) **SPECKLED FOOTMAN** Migrant
Recorded in: SY89; SY99. 01 Jul, leg. P A Davey (D Kingman, P A Davey, J Kingman). 10 Jul (P A Davey).
- 72.047 *Eilema caniola* (Hübner, [1808]) **HOARY FOOTMAN** Nb
Recorded in: SY39. SY39/MT 0001 Charmouth (SY3693); 09 Sep (G Sell).
- 72.060 *Hypenodes humidalis* Doubleday, 1850 **MARSH OBLIQUE-BARRED** Nb
Recorded in: SY99. SY99/004 Morden Bog and Hyde Heath SSSI (SY9190); 24 on 30 Jul, leg. P A Davey (D Kingman, P A Davey, V Giavarini, J Kingman). SY99/9190 Morden Bog (SY9190); 30 Jul, leg. P A Davey (D Kingman, P A Davey, V Giavarini, J Kingman).
- 72.062 *Schrankia taenialis* (Hübner, [1809]) **WHITE-LINE SNOUT** Nb
Recorded in: ST91. ST91/9015 Stubhampton Bottom (ST9015); 2 on 09 Jul, leg. P A Davey (D Kingman, P A Davey, J Kingman).
- 72.066 *Parascotia fuliginaria* (Linnaeus, 1761) **WAVED BLACK** Nb
Recorded in: SU01; SU10; SU11. SU01/0811 Gotham (SU0811); field, 03 Aug (C Hill). SU10/1008 Verwood (SU1008); 09 Jul; 18 Jul (C Court). SU11/MT 0001 Alderholt (SU1112); 10 Jul (T Morris).

- 72.076 *Catocala fraxini* (Linnaeus, 1758) **CLIFDEN NONPAREIL** Migrant
Recorded in: SU01; SY79; SY88; SY89; SZ08. SU01/0212 Wimborne St Giles (SU0212); 08 Oct (J C Winterbottom). SY79/7290 Lower Bockhampton (SY7290); 09 Oct (Unknown). SY79/7695 Puddletown (SY7695); 2 on 05 Sep; 06 Sep; 10 Sep; 27 Sep; 03 Oct; 04 Oct; 2 on 05 Oct (H G Wood Homer). SY79/MT 0003 Tincleton (SY7892); 08 Oct; 09 Oct (R Cottle). SY88/MT 0010 East Lulworth (SY8582); 07 Oct (L J Hill). SY89/8293 Turners Puddle (SY8293); 10 Sep, leg. P Clarke (A M Davis, K Tailby, P Clarke, M J Hammond). SZ08/0288 Brownsea Island (SZ0288); 30 Sep; field, 30 Sep (C Thain).
- 72.082 *Catocala promissa* ([Denis & Schiffermüller], 1775) **LIGHT CRIMSON UNDERWING** RDB3
Recorded in: SU01. SU01/0811 Gotham (SU0811); outside light, 21 Aug, leg. P A Davey (C Hill).
- 73.010 *Macdunnoughia confusa* (Stephens, 1850) **DEWICK'S PLUSIA** Rare migrant
Recorded in: SY67; SY68; SY88. SY67/6870 Isle of Portland (SY6870); 19 Jul; 19 Jul (D Saunders). SY68/MT 0006 Weymouth (SY6682); 01 Oct (P Harris). SY88/MT 0001 East Lulworth (SY8583); 15 Sep (L J Hill).
- 73.026 *Deltote uncula* (Clerck, 1759) **SILVER HOOK** Local
Recorded in: SZ08. SZ08/0383 Studland (SZ0383); field, 24 Jun (G Freeman). SZ08/0384 Studland (SZ0384); field, 21 Jul (G Freeman).
- 73.031 *Tyta luctuosa* ([Denis & Schiffermüller], 1775) **FOUR-SPOTTED** Na
Recorded in: SY66; SY67; SY88. SY66/MT 0001 Portland (SY6868); field, 24 May (Portland Bird Observatory). SY67/6870 Isle of Portland (SY6870); 26 Jul; 28 Jul; 07 Aug; 09 Aug (D Saunders). SY68/xxxx Isle of Portland (SY66); field, 02 Jul (M J Deans). SY88/8084 Winfrith Newburgh (SY8084); field, 19 Jul, leg. G R Hopkins (L Pullen).
- 73.033 *Diloba caeruleocephala* (Linnaeus, 1758) **FIGURE OF EIGHT**
Recorded in: ST61; ST80; SU01; SU11; SY58. ST80/MT 0001 Winterborne Stickland (ST8305); 15 Oct; 3 on 28 Oct; 2 on 29 Oct; 31 Oct (L de Whalley). SU01/0811 Gotham (SU0811); 28 Oct (C Hill). SU11/MT 0001 Alderholt (SU1112); 06 Nov (T Morris). SY58/5983 Warre Wood (SY5983); 09 Oct (P H Sterling). SY58/MT 0001 Puncknowle (SY5386); 27 Sep; 03 Oct; 2 on 04 Oct; 06 Oct; 07 Oct; 2 on 10 Oct; 12 Oct; 13 Oct; 2 on 14 Oct; 4 on 15 Oct; 7 on 16 Oct; 17 Oct; 2 on 18 Oct; 2 on 19 Oct; 20 Oct; 23 Oct; 25 Oct; 27 Oct; 3 on 28 Oct (R Eden). Yetminster, Shearstones (ST6010); 11 Oct; 12 Oct; 13 Oct (C R Burningham).
- 73.034 *Moma alpium* (Osbeck, 1778) **SCARCE MERVEILLE DU JOUR** RDB3
Recorded in: SU11. SU11/MT 0001 Alderholt (SU1112); 22 May; 09 Jun; 25 Jun; 26 Jun (T Morris).
- 73.037 *Acronicta tridens* ([Denis & Schiffermüller], 1775) **DARK DAGGER**
Recorded in: SZ07. SZ07/005/41 South Dorset Coast (SMU 41) (SZ0377); field, larval on 12 Sep, leg. M Skelton (M Coffin).
- 73.038 *Acronicta psi* (Linnaeus, 1758) **GREY DAGGER**
Recorded in: ST40; SY88; SY99; SZ19. ST40/MT 0002 Beaminster (ST4801); field, larval on 13 Aug (M Raper). SY88/MT 0004 East Holme (SY8986); male on 30 Jul, gen. det. (J H S Cox). SY99/9894 Upton Heath (SY9894); 20 Jul, gen. det. (D J Evans).
- 73.050 *Cucullia absinthii* (Linnaeus, 1761) **WORMWOOD** Nb
Recorded in: SY67. SY67/6870 Isle of Portland (SY6870); 30 Jul; 15 Aug; 05 May (D Saunders).
- 73.053 *Cucullia chamomillae* ([Denis & Schiffermüller], 1775) **CHAMOMILE SHARK** Local
Recorded in: SY67; SY79. SY79/7695 Puddletown (SY7695); 13 May; 17 May (H G Wood Homer).
- 73.061 *Stilbia anomala* (Haworth, 1812) **ANOMALOUS** Local
Recorded in: SY79; SY88; SY89. SY79/MT 0003 Tincleton (SY7892); 05 Sep (R Cottle). SY88/MT 0004 East Holme (SY8986); 10 Sep (J H S Cox). SY89/8293 Turners Puddle (SY8293); 10 Sep, leg. P Clarke (A M Davis, K Tailby, P Clarke, M J Hammond).
- 73.064 *Amphipyra tragopoginis* (Clerck, 1759) **MOUSE MOTH**
Recorded in: ST80; ST90; ST91; SU01; SY68; SY78; SY79; SY88; SY99. Broadmayne, Spring Gardens (SY7387); 20 Aug (P Bruce-Jones). ST80/MT 0001 Winterborne Stickland (ST8305); 09 Sep (L de Whalley). ST90/MT 0002 Spetisbury (ST9102); 05 Aug, leg. D Kingman; 09 Aug, leg. D Kingman; 18 Aug, leg. D Kingman; 2 on 19 Aug, leg. D Kingman; 20 Aug, leg. D Kingman; 06 Sep, leg. D Kingman (D Kingman, J Kingman). ST91/9618 Cranborne Chase (ST9618); 25 Jul, leg. P A Davey (D Kingman, P A Davey, J Kingman). SU01/0212 Wimborne St Giles (SU0212); 16 Sep (J C Winterbottom). SY68/MT 0006 Weymouth (SY6682); 06 Aug; 22 Aug (P Harris). SY79/7695 Puddletown

(SY7695); 13 Aug; 15 Aug; 16 Aug; 20 Aug; 21 Aug; 09 Sep (H G Wood Homer). SY88/MT 0004 East Holme (SY8986); 07 Aug (J H S Cox). SY99/MT 0002 Corfe Mullen (SY9897); 16 Aug (R Lambert). SY99/MT 0003 Lytchett Matravers (SY9395); 28 Aug (G Freeman).

73.065 *Asteroscopus sphinx* (Hufnagel, 1766) **SPRAWLER**

Recorded in: ST70; SU01; SY58. ST70/7404 Melcombe Park (ST7404); 104 on 04 Nov (H G Wood Homer). SU01/0811 Gotham (SU0811); 06 Nov (C Hill). SY58/MT 0001 Puncknowle (SY5386); 5 on 13 Nov; 14 Nov; 16 Nov; 18 Nov; 20 Nov; 24 Nov (R Eden).

73.070 *Pyrrhia umbra* (Hufnagel, 1766) **BORDERED SALLOW** Local

Recorded in: SY39; SY58; SY67; SY68; SZ07; SZ08. SY39/MT 0001 Charmouth (SY3693); 25 May; 27 May; 04 Jun; 05 Jun; 20 Jun; 24 Jun; 29 Jun; 02 Jul; 07 Jul; 17 Jul; 21 Jul (G Sell). SY58/MT 0001 Puncknowle (SY5386); 03 Jul; 24 Jul (R Eden). SY67/6870 Isle of Portland (SY6870); 11 Jun; 25 Jun; 01 Jul; 22 Jul; 28 Jul; 03 Aug; 14 Aug; 15 Aug (D Saunders). SY67/6972 Isle of Portland (SY6972); 5 on 25 Jun, leg. N Spring (N Spring, D Kingman). SY67/MT 0002 Weymouth (SY6676); 10 Jul; 19 Jul (D Foot). SY68/MT 0006 Weymouth (SY6682); 19 Jul (P Harris). SZ07/0277 Durlston Country Park (SZ0277); 3 on 19 Jul, leg. P A Davey (D Kingman, P A Davey, J Kingman). SZ07/MT 0002 Swanage (SZ0278); 26 Jun (P England). SZ08/MT 0001 Swanage (SZ0380); 11 Jun (E Pratt).

73.073 *Heliothis maritima* Graslin, 1855 **SHOULDER-STRIPED CLOVER** RDB3

Recorded in: SU00. SU00/0504 Holt Heath (SU0504); swept, 10 larval on 24 Aug (P A Davey).

73.074 *Heliothis peltigera* ([Denis & Schiffermüller], 1775) **BORDERED STRAW** Migrant

Recorded in: SY49; SY58; SY66; SY67; SY68; SY79; SY97; SZ19. SY49/MT 0002 Bothenhampton (SY4892); 08 Jun (M S Parsons). SY58/MT 0001 Puncknowle (SY5386); 11 Jun; 19 Jun; 03 Sep (R Eden). SY66/MT 0001 Portland (SY6868); 31 Jul; 14 Aug; 16 Aug (M Cade). SY67/6870 Isle of Portland (SY6870); 23 Jun; 15 Aug (D Saunders). SY67/6870 Portland, Reap Lane (SY6870); 11 Jun (Portland Bird Observatory). SY68/MT 0001 Dorchester (SY6889); 18 Jun (J E Down). SY79/7695 Puddletown (SY7695); 06 Jul (H G Wood Homer). SY97/9675 St Alban's or St Aldhelm's Head (SY9675); 10 Aug (G Wright).

73.076 *Helicoverpa armigera* (Hübner, [1808]) **SCARCE BORDERED STRAW** Migrant

Recorded in: SY39; SY49; SY58; SY66; SY67; SY68; SY79; SZ07. SY39/MT 0001 Charmouth (SY3693); 07 Oct; 2 on 08 Oct; 08 Oct; 2 on 09 Oct; 2 on 10 Oct (G Sell). SY49/MT 0002 Bothenhampton (SY4892); 05 Sep (M S Parsons). SY58/MT 0001 Puncknowle (SY5386); 28 Aug; 21 Sep; 27 Sep; 2 on 08 Oct; 09 Oct; 31 Oct (R Eden). SY66/MT 0001 Portland (SY6868); 27 Aug; 03 Oct; 2 on 07 Oct; 4 on 08 Oct; 09 Oct; 10 Oct (M Cade). SY68/MT 0006 Weymouth (SY6682); 10 Oct; 03 Nov (P Harris). SY68/MT 0007 Weymouth (SY6982); 21 Aug; 09 Oct ('Ricky' Lambert). SY79/7695 Puddletown (SY7695); 08 Sep; 01 Oct; 04 Oct; 07 Oct; 5 on 08 Oct; 09 Oct; 2 on 10 Oct; 11 Oct; 13 Oct; 14 Oct; 29 Oct; 01 Nov; 04 Nov (H G Wood Homer). SY79/MT 0003 Tincleton (SY7892); 09 Oct (R Cottle). SZ07/0277 Durlston Country Park (SZ0277); 3 on 07 Oct, leg. P A Davey (D Kingman, P A Davey, J Kingman). SZ07/0377 Durlston Country Park (SZ0377); 07 Oct; 07 Oct, leg. M C Townsend; 2 on 08 Oct, leg. P Sharpe; 2 on 09 Oct (B F Skinner).

73.087 *Spodoptera exigua* (Hübner, [1808]) **SMALL MOTTLED WILLOW** Migrant

Recorded in: SY58; SY66; SY79. SY58/MT 0001 Puncknowle (SY5386); 22 Jul (R Eden). SY66/MT 0001 Portland (SY6868); 24 Aug (M Cade). SY79/7695 Puddletown (SY7695); 12 Jul (H G Wood Homer).

73.091 *Elaphria venustula* (Hübner, 1790) **ROSY MARBLED** Nb

Recorded in: SU10; SU11. SU10/1008 Verwood (SU1008); 05 Jun (C Court). SU11/MT 0001 Alderholt (SU1112); 25 Jun; 29 Jun (T Morris).

73.093 *Caradrina kadenii* (Freyer, [1836]) **CLANCY'S RUSTIC** Migrant

Recorded in: SY49; SY58; SY66; SY67; SY68; SY88; SZ07; SZ09. SY49/MT 0002 Bothenhampton (SY4892); 09 Oct (M S Parsons). SY58/MT 0001 Puncknowle (SY5386); 2 on 22 Sep; 26 Sep; 27 Sep; 2 on 28 Sep; 2 on 29 Sep; 03 Oct; 04 Oct; 07 Oct; 09 Oct; 10 Oct; 17 Oct; 03 Nov; 04 Nov (R Eden). SY66/MT 0001 Portland (SY6868); 05 Jul (M Cade). SY67/MT 0001 Weymouth (SY6679); 10 Oct (P H Sterling). SY67/MT 0002 Weymouth (SY6676); 2 on 27 Sep (D Foot). SY68/MT 0006 Weymouth (SY6682); 18 Jul; 09 Sep; 27 Sep; 09 Oct; 15 Oct; 21 Oct (P Harris). SY68/MT 0007 Weymouth (SY6982); 22 Sep ('Ricky' Lambert). SY88/MT 0001 East Lulworth (SY8583); 06 Oct (L J Hill). SZ07/0078 Leeson House (SZ0078); 25 Jun (S W Smith). SZ07/0377 Durlston Country Park (SZ0377); 06 Oct; 08 Oct, leg. P Sharpe (B F Skinner). SZ07/MT 0001 Swanage (SZ0278); 08 Oct (R Cox). SZ07/MT 0002 Swanage (SZ0278); 09 Oct (P England). SZ09/MT 0006 Poole (SZ0291); 27 Sep (V Giavarini).

73.096 *Hoplodrina octogenaria* (Goeze, 1781) **UNCERTAIN**

Recorded in: ST40. ST40/4907 Chedington Wood (ST4907); 28 on 02 Jul, gen. det. (A Russell et al).

- 73.100 *Chilodes maritima* (Tauscher, 1806) **SILKY WAINSCOT** Local
Recorded in: SU01; SY66; SY67; SY68; SY79. SU01/0811 Gotham (SU0811); 11 Jul (C Hill). SY66/MT 0001 Portland (SY6868); 20 Jun (M Cade). SY67/MT 0001 Weymouth (SY6679); 12 Jun (P H Sterling). SY67/MT 0004 Weymouth (SY6779); 31 May; 2 on 05 Jun; 08 Jun; 4 on 09 Jun; 11 Jun; 15 Jun; 16 Jun; 2 on 17 Jun; 28 Jun; 04 Jul; 11 Jul; 03 Aug (L Phillips). SY68/MT 0006 Weymouth (SY6682); 01 Jul (P Harris).
- 73.106 *Trachea atriplicis* (Linnaeus, 1758) **ORACHE MOTH** Rare migrant
Recorded in: SZ07. SZ07/0078 Leeson House (SZ0078); 19 Jul (S W Smith).
- 73.119 *Helotropha leucostigma* (Hübner, [1808]) **CRESCENT** Local
Recorded in: ST61; SY66; SY67; SY79; SY98; SZ09. SY66/MT 0001 Portland (SY6868); 11 Jul; 17 Jul (M Cade). SY67/MT 0004 Weymouth (SY6779); 2 on 03 Aug (L Phillips). SY79/7695 Puddletown (SY7695); 19 Jul; 27 Jul (H G Wood Homer). SY98/MT 0004 Wareham Town (SY9287); 07 Aug; 04 Sep (B Young). SY98/MT 0007 Wareham (SY9288); 18 Jul (R W Adams). SZ09/0697 Ferndown, Longham Lakes (SZ0697); 3 on 27 Jul, leg. R R Cook (D Couzens, R R Cook). Yetminster, Shearstones (ST6010); 07 Jul (C R Burningham).
- 73.127 *Amphipoea lucens* (Freyer, 1845) **LARGE EAR** Local
Recorded in: SY68. SY68/MT 0006 Weymouth (SY6682); 09 Aug, gen. det., New VC Record (P Harris).
- 73.137 *Arenostola phragmitidis* (Hübner, [1803]) **FEN WAINSCOT** Local
Recorded in: SY39; SY58; SY67; SY68; SY79; SY99; SZ19. SY39/MT 0001 Charmouth (SY3693); 08 Jul; 09 Jul (G Sell). SY58/MT 0001 Puncknowle (SY5386); 2 on 25 Jul; 2 on 26 Jul; 29 Jul; 30 Jul; 01 Aug (R Eden). SY58/MT 0004 Puncknowle (SY5387); 31 Jul (D Foot). SY67/MT 0002 Weymouth (SY6676); 19 Jul; 24 Jul; 26 Jul; 01 Aug (D Foot). SY67/MT 0004 Weymouth (SY6779); 27 Jul; 02 Aug; 2 on 03 Aug; 13 Aug (L Phillips). SY68/6881 Lodmoor (SY6881); 02 Aug, leg. R R Cook (P H Sterling, A Page, R R Cook). SY68/6881 Lodmoor South Landfill (SY6881); 02 Aug, leg. P H Sterling (P H Sterling, R R Cook, A Page). SY68/MT 0006 Weymouth (SY6682); 23 Jul; 01 Aug (P Harris). SY79/MT 0003 Tincleton (SY7892); 01 Aug; 03 Aug (R Cottle). SY99/004 Morden Bog and Hyde Heath SSSI (SY9190); 3 on 30 Jul, leg. P A Davey (D Kingman, P A Davey, V Giavarini, J Kingman). SY99/9190 Morden Bog (SY9190); 30 Jul, leg. P A Davey (D Kingman, P A Davey, V Giavarini, J Kingman).
- 73.145 *Photodes fluxa* (Hübner, [1809]) **MERE WAINSCOT** Nb
Recorded in: SY66. SY66/MT 0001 Portland (SY6868); 18 Jul (M Cade).
- 73.148 *Photodes morrisii* (Dale, 1837) **MORRIS'S WAINSCOT** RDB1
Recorded in: SY39. SY39/04/06 West Dorset Coast (SMU 6) (SY3693); 9 on 25 Jun (S Whitehouse).
- 73.151 *Globia sparganii* (Esper, 1789) **WEBB'S WAINSCOT** Nb
Recorded in: SY67; SY79; SY98. SY67/MT 0004 Weymouth (SY6779); 8 on 03 Aug; 09 Aug (L Phillips). SY79/7695 Puddletown (SY7695); 15 Aug (H G Wood Homer). SY98/MT 0004 Wareham Town (SY9287); 17 Sep (B Young).
- 73.157 *Apamea anceps* ([Denis & Schiffmüller], 1775) **LARGE NUTMEG** Local
Recorded in: ST71. ST71/7817 Walton Elm (ST7817); 04 Jul (J Fradgley).
- 73.164 *Apamea sublustris* (Esper, 1788) **REDDISH LIGHT ARCHES** Local
Recorded in: ST82; SU11; SY58; SY67; SY68; SY79; SY99; SZ07. ST82/8028 Milton on Stour (ST8028); 06 Jul, leg. P H Sterling (J Burge). SU11/MT 0001 Alderholt (SU1112); 19 Jul (T Morris). SY58/MT 0001 Puncknowle (SY5386); 12 Jun; 18 Jun (R Eden). SY67/6870 Isle of Portland (SY6870); 17 Jun (D Saunders). SY68/6688 Hog Hill (SY6688); field, 06 Jul (Unknown). SY68/MT 0007 Weymouth (SY6982); 10 Jul ('Ricky' Lambert). SY79/7695 Puddletown (SY7695); 06 Jul; 2 on 11 Jul (H G Wood Homer). SY99/MT 0003 Lytchett Matravers (SY9395); 24 Jun (G Freeman). SZ07/0277 Durlston Country Park (SZ0277); 19 Jul, leg. P A Davey (D Kingman, P A Davey, J Kingman). SZ07/0377 Durlston Country Park (SZ0377); 12 Jun; 31 on 26 Jun; 10 Jul (S Breeze). SZ07/MT 0001 Swanage (SZ0278); 27 Jun; 3 on 28 Jun; 30 Jun (R Cox). SZ07/MT 0002 Swanage (SZ0278); 18 Jun; 5 on 26 Jun; 2 on 02 Jul (P England).
- 73.169 *Mesapamea secalis* (Linnaeus, 1758) **COMMON RUSTIC**
Recorded in: ST40; SZ19. ST40/4907 Chedington Wood (ST4907); 30 on 02 Jul, gen. det. 6 on 02 Jul, gen. det. (A Russell et al).
- 73.178 *Leucochlaena oditis* (Hübner, [1822]) **BEAUTIFUL GOTHIC** RDB3
Recorded in: SY58; SY67; SZ07. SY58/MT 0001 Puncknowle (SY5386); 03 Oct (R Eden). SY67/6870 Isle of Portland (SY6870); 14 Sep (D Saunders). SY67/MT 0005 Portland (SY6871); 01 Oct (J Williamson). SZ07/005/41 South Dorset Coast (SMU 41) (SZ0377); 09 Oct (S Whitehouse). SZ07/0377 Durlston Country Park (SZ0377); 10 Oct; 5 on 07 Oct, leg. M C Townsend; 29 Sep; 08 Oct, leg. P Sharpe; 08 Oct (S Hatch). SZ07/MT 0001 Swanage (SZ0278); 08 Sep; 09 Sep; 10 Sep; 12 Sep; 2 on 13 Sep; 3 on 15 Sep; 16 Sep; 30 Sep; 04 Oct (R Cox).

- 73.183 *Cirrhia gilvago* ([Denis & Schiffermüller], 1775) **DUSKY-LEMON SALLOW** Local
Recorded in: SY58. SY58/MT 0001 Puncknowle (SY5386); 26 Oct (R Eden).
- 73.184 *Cirrhia ocellaris* (Borkhausen, 1792) **PALE-LEMON SALLOW** Na
Recorded in: SY49. SY49/MT 0002 Bothenhampton (SY4892); 08 Oct (M S Parsons).
- 73.188 *Agrochola helvola* (Linnaeus, 1758) **FLOUNCED CHESTNUT**
Recorded in: ST30; SY39; SY49; SY58; SY79. SY39/3994 Morcombelake (SY3994); 02 Nov (A Bartlett). SY49/4292 Chideock (SY4292); 21 Oct (J Clarke). SY58/MT 0004 Puncknowle (SY5387); 06 Oct (P H Sterling). SY79/7695 Puddletown (SY7695); 11 Oct (H G Wood Homer). SY79/MT 0003 Tincton (SY7892); 08 Oct (R Cottle).
- 73.191 *Agrochola haematidea* (Duponchel, 1827) **SOUTHERN CHESTNUT** RDB2
Recorded in: SU00; SU10; SY89; SY98; SZ19. SU00/0604 Holt Heath (SU0604); netted, 2 on 14 Oct, leg. D Kingman (D Kingman, J Kingman). SU10/1008 Verwood (SU1008); field, 11 Oct (C Court). SY89/008 Turners Puddle Heath SSSI (SY8291); female on 03 Nov (P H Sterling). SY98/9089 Cold Harbour (SY9089); 12 Oct (P H Sterling).
- 73.197 *Conistra rubiginea* ([Denis & Schiffermüller], 1775) **DOTTED CHESTNUT** Nb
Recorded in: ST61; ST82; SU10; SU11; SY39; SY58; SY68; SY78; SY79; SY88; SY99; SZ07. Broadmayne, Spring Gardens (SY7387); 24 Mar (P Bruce-Jones). ST82/8028 Milton on Stour (ST8028); 07 Apr, leg. P H Sterling (J Burge). SU10/1008 Verwood (SU1008); 17 Mar (C Court). SU11/MT 0001 Alderholt (SU1112); 15 Apr (T Morris). SY39/3893 Stonebarrow Hill (SY3893); 01 May (G R Hopkins). SY58/MT 0001 Puncknowle (SY5386); 24 Mar; 25 Mar; 04 Apr; 18 Apr; 09 Nov (R Eden). SY68/MT 0002 Chickerell (SY6580); 15 Mar (C Pinder). SY68/MT 0006 Weymouth (SY6682); 04 May (P Harris). SY79/7695 Puddletown (SY7695); 16 Mar; 21 Mar; 17 Apr; 24 Apr (H G Wood Homer). SY79/MT 0003 Tincton (SY7892); 05 May; indoors, 04 Oct; indoors, 2 on 23 Oct (R Cottle). SY88/MT 0010 East Lulworth (SY8582); 26 Apr (L J Hill). SY99/9795 Corfe Mullen (SY9795); 08 Apr (R W Steedman). SY99/MT 0002 Corfe Mullen (SY9897); 27 Mar (R Lambert). SZ07/MT 0002 Swanage (SZ0278); 27 Mar (P England). Yetminster, Shearstones (ST6010); 06 Apr (C R Burningham).
- 73.200 *Lithophane semibrunnea* (Haworth, 1809) **TAWNY PINION** Local
Recorded in: ST40; SY58; SY68; SY79; SZ09. ST40/MT 0001 Beaminster (ST4701); 08 Apr (S Philp). SY58/MT 0001 Puncknowle (SY5386); 27 Mar; 21 Apr (R Eden). SY58/MT 0004 Puncknowle (SY5387); 06 Oct (P H Sterling). SY68/MT 0007 Weymouth (SY6982); 27 Mar ('Ricky' Lambert). SY79/7695 Puddletown (SY7695); 06 Apr; 19 May; 04 Jun (H G Wood Homer). SZ09/MT 0001 Poole (SZ0097); 28 Mar (J Fradgley).
- 73.213 *Ipimorpha subtusa* ([Denis & Schiffermüller], 1775) **OLIVE** Local
Recorded in: SY66; SY68; SZ19. SY66/MT 0001 Portland (SY6868); 16 Jul (M Cade). SY68/MT 0006 Weymouth (SY6682); 17 Jul (P Harris).
- 73.223 *Dryobota labecula* (Esper, 1788) **OAK RUSTIC** Rare migrant
Recorded in: SY58; SZ07; SZ29. SY58/5685 Abbotsbury (SY5685); 3 on 20 Oct; 21 Oct; 22 Oct (M S Parsons). SY58/5685 Knolls (SY5685); 3 on 20 Oct (P H Sterling). SZ07/005/41 South Dorset Coast (SMU 41) (SZ0377); 6 on 06 Oct; 2 on 08 Oct; 2 on 09 Oct (B F Skinner). SZ07/0277 Durlston Country Park (SZ0277); 5 on 07 Oct, leg. P A Davey; 15 on 28 Oct, leg. D Kingman (D Kingman, P A Davey, J Kingman). SZ07/0377 Durlston Country Park (SZ0377); 2 on 06 Oct; 10 Oct; 3 on 07 Oct, leg. M C Townsend; 6 on 08 Oct, leg. P Sharpe; 10 on 09 Oct (B F Skinner). SZ07/MT 0002 Swanage (SZ0278); 09 Oct; 15 Oct; 3 on 22 Oct; 12 on 30 Oct (P England).
- 73.227 *Dryobotodes tenebrosa* (Esper, 1789) **SOMBRE BROCADE** Migrant
Recorded in: SY58; SZ07. SY58/5685 Knolls (SY5685); 19 Oct (C Rogers). SZ07/0377 Durlston Country Park (SZ0377); 2 on 09 Oct (M J Deans).
- 73.229 *Trigonophora flammea* (Esper, 1785) **FLAME BROCADE** Migrant
Recorded in: SY66; SZ07. SY66/MT 0001 Portland (SY6868); 21 Oct; 30 Oct (M Cade). SZ07/0078 Langton Matravers (SZ0078); 27 Oct (D C G Brown). SZ07/0377 Durlston Country Park (SZ0377); 09 Oct (M J Deans).
- 73.230 *Aporophyla australis* (Boisduval, 1829) **FEATHERED BRINDLE** Nb
Recorded in: SY58; SY67; SY68; SY98; SZ07; SZ29. SY58/5286 West Bexington (SY5286); 21 Sep (R R Cook). SY58/5685 Abbotsbury (SY5685); 08 Oct, leg. M S Parsons (P H Sterling, M S Parsons). SY58/5983 Warre Wood (SY5983); 29 Sep; 09 Oct (P H Sterling). SY58/MT 0001 Puncknowle (SY5386); 15 Sep; 16 Sep; 17 Sep; 18 Sep; 19 Sep; 20 Sep; 21 Sep; 22 Sep; 23 Sep; 24 Sep; 25 Sep; 26 Sep; 27 Sep; 28 Sep; 29 Sep; 30 Sep; 01 Oct; 02 Oct; 03 Oct; 04 Oct; 05 Oct; 06 Oct; 10 Oct; 11 Oct; 12 Oct; 15 Oct (R Eden). SY58/MT 0004 Puncknowle (SY5387); 11 Sep (D Foot). SY67/6870 Isle of Portland (SY6870); 12 Sep; 16 Sep; 2 on 17 Sep; 3 on 18 Sep (D Saunders). SY67/MT 0005 Portland (SY6871); 3 on 01 Oct (J Williamson). SY68/MT 0002 Chickerell (SY6580); 28 Sep (C Pinder). SY98/MT 0009 Corfe Castle (SY9881); 21 Sep (D Gould). SZ07/0277 Durlston Country Park (SZ0277); 24 on 28 Sep, leg. P A

- Davey; 24 on 07 Oct, leg. P A Davey; 28 Oct, leg. D Kingman (M S Parsons, P A Davey). SZ07/0377 Durlston Country Park (SZ0377); 10 Oct; 30 on 07 Oct, leg. M C Townsend; 09 Sep; 18 Sep; 5 on 29 Sep; 8 on 02 Oct; 05 Oct; 15 on 08 Oct, leg. P Sharpe; 16 Oct (S Hatch). SZ07/MT 0001 Swanage (SZ0278); 02 Oct (R Cox). SZ07/MT 0002 Swanage (SZ0278); 18 Sep; 2 on 01 Oct (P England).
- 73.231 *Aporophyla lutulenta* ([Denis & Schiffermüller], 1775) **DEEP-BROWN DART**
Recorded in: SU01; SU11; SY68; SZ07. SU01/0811 Gotham (SU0811); 08 Oct (C Hill). SU11/MT 0001 Alderholt (SU1112); 27 Sep; 03 Oct; 2 on 07 Oct; 2 on 08 Oct (T Morris). SY68/MT 0002 Chickerell (SY6580); 23 Sep (C Pinder). SZ07/0377 Durlston Country Park (SZ0377); 29 Aug (S Breeze).
- 73.234 *Dasypolia templi* (Thunberg, 1792) **BRINDLED OCHRE** Local
Recorded in: SY66; SY88. SY66/MT 0001 Portland (SY6868); 07 Nov (M Cade). SY88/MT 0010 East Lulworth (SY8582); 10 Oct (L J Hill).
- 73.237 *Polymixis flavicineta* ([Denis & Schiffermüller], 1775) **LARGE RANUNCULUS** Local
Recorded in: ST61; SY39; SY49; SY58; SY67. SY39/MT 0001 Charmouth (SY3693); 21 Sep (G Sell). SY49/4292 Chideock (SY4292); 22 Oct (J Clarke). SY49/MT 0002 Bothenhampton (SY4892); 09 Sep; 19 Sep; 6 on 27 Sep (M S Parsons). SY58/MT 0001 Puncknowle (SY5386); 04 Oct; 14 Oct (R Eden). SY67/6870 Isle of Portland (SY6870); 2 on 11 Sep; 21 Oct (D Saunders). Yetminster, Shearstones (ST6010); 21 Sep; 22 Sep (C R Burningham).
- 73.243 *Orthosia miniosa* ([Denis & Schiffermüller], 1775) **BLOSSOM UNDERWING** Local
Recorded in: ST70; ST71; ST72; SU11; SY58; SY99. ST70/7404 Melcombe Park (ST7404); 19 Apr (H G Wood Homer). ST71/7310 Alners Gorse (ST7310); 11 on 24 Apr (N Spring). ST72/MT 0001 Gillingham (ST7925); 19 Apr (G R Hopkins). SU11/MT 0001 Alderholt (SU1112); 17 Apr (T Morris). SY58/MT 0001 Puncknowle (SY5386); 12 Apr (R Eden). SY99/MT 0002 Corfe Mullen (SY9897); 18 Apr (R Lambert).
- 73.246 *Orthosia populeti* (Fabricius, 1781) **LEAD-COLOURED DRAB** Local
Recorded in: SU01; SU11. SU01/0212 Wimborne St Giles (SU0212); 4 on 05 Apr (J C Winterbottom). SU11/MT 0001 Alderholt (SU1112); 08 Apr; 09 Apr; 05 May (T Morris).
- 73.254 *Cerapteryx graminis* (Linnaeus, 1758) **ANTLER MOTH**
Recorded in: ST90; SY49; SY58; SY66; SY67; SY79. ST90/MT 0002 Spetisbury (ST9102); 27 Jul, leg. D Kingman (D Kingman, J Kingman). SY49/4996 Elcombe Farm (SY4996); 12 Aug (I Gamble). SY49/MT 0002 Bothenhampton (SY4892); 30 Jul (M S Parsons). SY58/MT 0001 Puncknowle (SY5386); 12 Aug; 2 on 13 Aug (R Eden). SY66/MT 0001 Portland (SY6868); 11 Aug; 3 on 16 Aug; 17 Aug; 04 Sep (M Cade). SY67/6870 Isle of Portland (SY6870); 13 Aug; 15 Aug; 16 Aug; 16 Aug (D Saunders). SY79/7695 Puddletown (SY7695); 01 Aug; 09 Aug (H G Wood Homer). SY79/MT 0003 Tincton (SY7892); 25 Jul (R Cottle).
- 73.265 *Lacanobia contigua* ([Denis & Schiffermüller], 1775) **BEAUTIFUL BROCADE** Local
Recorded in: SU00; SU11; SY89; SY98; SY99; SZ09. SU00/0503 White Sheet Plantation (SU0503); 2 on 06 Jul, leg. P A Davey (M S Parsons, P A Davey). SU00/MT 0004 Ferndown Town (SU0800); 06 Aug (R R Cook). SU11/MT 0001 Alderholt (SU1112); 17 Jun; 18 Jun (T Morris). SY89/8893 Bloxworth Heath (SY8893); 12 on 01 Jul, leg. P A Davey (D Kingman, P A Davey, J Kingman). SY98/9089 Cold Harbour (SY9089); 2 on 09 Jul (M S Parsons). SY99/9894 Upton Heath (SY9894); 2 on 20 Jul (D J Evans). SZ09/MT 0001 Poole (SZ0097); 08 Oct; 19 Oct (J Fradgley). Wareham, Westport Road (SY9187); 24 May (J E Slingsby).
- 73.266 *Lacanobia suasa* ([Denis & Schiffermüller], 1775) **DOG'S TOOTH** Local
Recorded in: SY67; SY68; SY98; SZ09; SZ19. SY67/6870 Isle of Portland (SY6870); 18 Jun (D Saunders). SY67/MT 0004 Weymouth (SY6779); 09 Jun (L Phillips). SY68/6881 Lodmoor South Landfill (SY6881); 02 Aug, leg. P H Sterling (P H Sterling, R R Cook, A Page). SY68/MT 0006 Weymouth (SY6682); 03 Jun; 09 Jun; 07 Aug (P Harris). SY98/MT 0004 Wareham Town (SY9287); 05 May; 16 Jun; 23 Jul; 25 Jul; 2 on 30 Jul; 8 on 07 Aug (B Young). SY98/MT 0007 Wareham (SY9288); 20 Aug (R W Adams). SZ09/0697 Ferndown, Longham Lakes (SZ0697); 27 Jul, leg. R R Cook (D Couzens, R R Cook).
- 73.268 *Lacanobia splendens* (Hübner, [1808]) **SPLENDID BROCADE** Migrant
Recorded in: SY66; SY79; SZ07. SY66/MT 0001 Portland (SY6868); 02 Jul; 05 Jul (M Cade). SY79/7695 Puddletown (SY7695); 11 Jul (H G Wood Homer). SZ07/0277 Durlston Country Park (SZ0277); 19 Jul, leg. P A Davey (D Kingman, P A Davey, J Kingman).
- 73.278 *Conisania andalusica* (Staudinger, 1859) **BARRETT'S MARBLED CORONET** Nb
Recorded in: SY49. SY49/4491 Eype Mouth (SY4491); 04 Jun, leg. P H Sterling; 3 on 18 Jun (P H Sterling, D Foot).

- 73.286 *Hadena perplexa* ([Denis & Schiffermüller], 1775) **TAWNY SHEARS**
 Recorded in: ST40; ST72; ST90; SY39; SY49; SY58; SY67; SY68; SZ07. ST40/MT 0001 Beaminster (ST4701); 04 Jun (S Philp). ST72/MT 0001 Gillingham (ST7925); 22 Aug; 23 Aug (G R Hopkins). ST90/MT 0002 Spetisbury (ST9102); 16 Jul, leg. D Kingman (D Kingman, J Kingman). SY39/MT 0001 Charmouth (SY3693); 25 May (G Sell). SY49/MT 0002 Bothenhampton (SY4892); 13 Jul (M S Parsons). SY58/MT 0001 Puncknowle (SY5386); 28 Apr; 01 May; 05 May; 2 on 06 May; 09 May; 4 on 14 May; 15 May; 16 May; 2 on 17 May; 7 on 18 May; 3 on 19 May; 4 on 20 May; 22 May; 5 on 24 May; 3 on 25 May; 3 on 26 May; 2 on 27 May; 28 May; 2 on 30 May; 01 Jun; 2 on 02 Jun; 05 Jun; 08 Jun; 09 Jun; 2 on 19 Jun; 23 Jun; 27 Jun; 2 on 01 Jul; 2 on 03 Jul; 2 on 04 Jul; 4 on 05 Jul; 2 on 07 Jul; 08 Jul; 09 Jul; 10 Jul; 2 on 11 Jul; 13 Jul; 16 Jul; 3 on 21 Jul; 22 Jul; 5 on 23 Jul; 3 on 24 Jul; 7 on 25 Jul; 6 on 26 Jul; 27 Jul; 28 Jul; 3 on 29 Jul; 02 Aug; 2 on 03 Aug; 04 Aug; 08 Aug; 2 on 24 Aug; 03 Sep; 07 Sep; 09 Sep; 11 Sep; 16 Sep; 17 Sep; 18 Sep (R Eden). SY67/6870 Isle of Portland (SY6870); 29 Jul (D Saunders). SY68/6187 Blackdown (SY6187); 04 Jun (T A Box). SZ07/0277 Durlston Country Park (SZ0277); 3 on 19 Jul, leg. P A Davey (D Kingman, P A Davey, J Kingman). SZ07/0377 Durlston Country Park (SZ0377); 10 on 02 Sep (D C G Brown).
- 73.288 *Mythimna turca* (Linnaeus, 1761) **DOUBLE LINE Nb**
 Recorded in: ST40; ST50; ST61; ST73; ST90; SU01; SU10; SY49; SY68; SY79; SY98; SY99; SZ09. ST40/4907 Chedington Wood (ST4907); 02 Jul, leg. P Clarke (A Russell et al). ST50/5704 Evershot (ST5704); 03 Jul (N Spring). ST61/6614 Alwiston (ST6614); 06 Jul (N Spring). ST73/7931 Bagmore Wood (ST7931); 10 Jul, leg. J Burge (M Plaxton). ST90/MT 0002 Spetisbury (ST9102); 12 Jul, leg. D Kingman (D Kingman, J Kingman). SU01/0811 Gotham (SU0811); 02 Jul (C Hill). SU10/1008 Verwood (SU1008); 29 Jun (C Court). SY49/MT 0002 Bothenhampton (SY4892); 26 Jun (M S Parsons). SY68/MT 0006 Weymouth (SY6682); 08 Jul (P Harris). SY68/MT 0007 Weymouth (SY6982); 01 Jul ('Ricky' Lambert). SY79/7695 Puddletown (SY7695); 23 Jun; 30 Jun; 07 Jul (H G Wood Homer). SY98/MT 0005 Arne (SY9585); 28 Jun (D Cooper). SY99/MT 0003 Lytchett Matravers (SY9395); 30 Jun (G Freeman). SZ09/0391 Parkstone (SZ0391); 29 Jun, leg. E Brodie (E Brodie, P Harris).
- 73.290 *Mythimna conigera* ([Denis & Schiffermüller], 1775) **BROWN-LINE BRIGHT-EYE**
 Recorded in: ST30; ST90; SU01; SU11; SY67; SY79. ST90/MT 0002 Spetisbury (ST9102); 29 Jul, leg. D Kingman (D Kingman, J Kingman). SU01/0212 Wimborne St Giles (SU0212); 7 on 16 Jul; 2 on 22 Jul; 6 on 30 Jul; 05 Aug (J C Winterbottom). SU11/MT 0001 Alderholt (SU1112); 26 Jul (T Morris). SY67/6870 Isle of Portland (SY6870); 23 Jun; 26 Jun; 27 Jun; 28 Jun; 2 on 29 Jun; 5 on 30 Jun; 4 on 01 Jul; 4 on 02 Jul; 5 on 03 Jul; 2 on 05 Jul; 2 on 06 Jul; 3 on 07 Jul; 9 on 08 Jul; 3 on 09 Jul; 2 on 10 Jul; 3 on 13 Jul; 16 Jul; 2 on 17 Jul; 5 on 18 Jul; 6 on 19 Jul; 2 on 20 Jul; 5 on 22 Jul; 12 on 23 Jul; 5 on 24 Jul; 5 on 25 Jul; 4 on 26 Jul; 3 on 27 Jul; 4 on 28 Jul; 9 on 29 Jul; 30 Jul; 4 on 31 Jul; 4 on 01 Aug; 10 on 02 Aug; 03 Aug; 7 on 04 Aug; 4 on 05 Aug; 6 on 08 Aug; 4 on 10 Aug; 5 on 11 Aug; 2 on 12 Aug; 3 on 13 Aug; 2 on 15 Aug (D Saunders). SY67/6972 Isle of Portland (SY6972); 25 Jun, leg. N Spring (N Spring, D Kingman). SY67/MT 0005 Portland (SY6871); 07 Aug (J Williamson). SY79/7695 Puddletown (SY7695); 19 Jul (H G Wood Homer). SY79/MT 0002 Tolpuddle (SY7994); 4 on 29 Jun (J Francis).
- 73.291 *Mythimna favicolor* (Barrett, 1896) **MATHEW'S WAINSCOT Nb**
 Recorded in: SY79. SY79/7695 Puddletown (SY7695); 03 Sep (H G Wood Homer).
- 73.296 *Mythimna unipuncta* (Haworth, 1809) **WHITE-SPECK Migrant**
 Recorded in: SY58; SY66; SY67; SY79. SY58/MT 0001 Puncknowle (SY5386); 22 Nov (R Eden). SY66/MT 0001 Portland (SY6868); 10 Oct; 23 Oct; 30 Oct; 07 Nov (M Cade). SY67/6970 Isle of Portland (SY6970); 27 Sep (Portland Bird Observatory). SY67/MT 0004 Weymouth (SY6779); 22 Jun (L Phillips). SY79/7695 Puddletown (SY7695); 13 Oct (H G Wood Homer).
- 73.303 *Leucania putrescens* (Hübner, [1824]) **DEVONSHIRE WAINSCOT Na**
 Recorded in: SZ07. SZ07/0277 Durlston Country Park (SZ0277); 19 Jul, leg. P A Davey (D Kingman, P A Davey, J Kingman).
- 73.304 *Leucania loreyi* (Duponchel, 1827) **COSMOPOLITAN Migrant**
 Recorded in: SY66; SY79. SY66/MT 0001 Portland (SY6868); 23 Oct (M Cade). SY79/7695 Puddletown (SY7695); 12 Nov (H G Wood Homer).
- 73.305 *Senta flammea* (Curtis, 1828) **FLAME WAINSCOT Na**
 Recorded in: SY98; SY99. SY98/9189 Morden Bog (SY9189); 2 on 20 May, leg. P A Davey; 27 Jun, leg. P A Davey (D Kingman). SY99/9190 Morden Bog (SY9190); 20 May, leg. P A Davey; 27 Jun, leg. P A Davey (D Kingman).
- 73.314 *Euxoa nigricans* (Linnaeus, 1761) **GARDEN DART**
 Recorded in: SY67; SY68; SY98. SY67/6870 Isle of Portland (SY6870); 22 Jul; 29 Jul (D Saunders). SY68/MT 0001 Dorchester (SY6889); 31 Jul (J E Down). SY98/MT 0004 Wareham Town (SY9287); 15 Aug (B Young).

- 73.316 *Agrotis cinerea* ([Denis & Schiffermüller], 1775) **LIGHT FEATHERED RUSTIC** Nb
Recorded in: SY97; SZ07. SY97/9776 West Man (SY9776); 4 on 15 May, leg. P N Butter (D Kingman). SZ07/0377 Durlston Country Park (SZ0377); 2 on 25 Apr; 2 on 02 May; field, 03 May; 16 on 18 May; 7 on 21 May; 5 on 22 May; 6 on 01 Jun; 7 on 05 Jun; 3 on 09 Jun, leg. P A Davey; 2 on 12 Jun (S Breeze). SZ07/MT 0002 Swanage (SZ0278); 20 May (P England).
- 73.322 *Agrotis vestigialis* (Hufnagel, 1766) **ARCHER'S DART** Local
Recorded in: SU00; SY98; SY99. SU00/MT 0004 Ferndown Town (SU0800); 30 Jul (R R Cook). SY98/9485 Hartland Moor (SY9485); 2 on 12 Aug (G Freeman). SY99/004 Morden Bog and Hyde Heath SSSI (SY9190); 30 Jul, leg. P A Davey (D Kingman, P A Davey, V Giavarini, J Kingman). SY99/9190 Morden Bog (SY9190); 30 Jul, leg. P A Davey (D Kingman, P A Davey, V Giavarini, J Kingman).
- 73.323 *Agrotis ripae* (Hübner, [1823]) **SAND DART** Nb
Recorded in: SY66. SY66/MT 0001 Portland (SY6868); 01 Jul (M Cade).
- 73.324 *Agrotis trux* (Hübner, [1824]) **CRESCENT DART** Local
Recorded in: SY39; SY49; SY58; SY67; SY88; SZ07. SY39/MT 0001 Charmouth (SY3693); 17 Jul; 2 on 18 Jul; 2 on 31 Jul; 01 Aug (G Sell). SY49/4291 Seatown (SY4291); 03 Aug (G Carr). SY58/MT 0001 Puncknowle (SY5386); 09 Jul; 17 Jul; 3 on 18 Jul; 19 Jul, leg. P H Sterling; 20 Jul (R Eden). SY67/6870 Isle of Portland (SY6870); 02 Jul; 3 on 03 Jul; 05 Jul; 24 Jul; 26 Jul (D Saunders). SY67/MT 0002 Weymouth (SY6676); 30 Jun; 05 Jul; 27 Jul; 02 Aug; 04 Aug (D Foot). SY88/MT 0001 East Lulworth (SY8583); 19 Jul, leg. L J Hill (L J Hill, L McLellan). SZ07/0078 Leeson House (SZ0078); 20 Jul (S W Smith). SZ07/0277 Durlston Country Park (SZ0277); 10 on 19 Jul, leg. P A Davey (D Kingman, P A Davey, J Kingman). SZ07/0377 Durlston Country Park (SZ0377); 07 Oct, leg. M Botham; 09 Jun, leg. P A Davey; 26 Jun (M Botham, M C Townsend). SZ07/MT 0001 Swanage (SZ0278); 29 Jun; 14 Jul (R Cox). SZ07/MT 0002 Swanage (SZ0278); 18 Jun; 17 Jul (P England).
- 73.341 *Standfussiana lucerneae* (Linnaeus, 1758) **NORTHERN RUSTIC** Local
Recorded in: SY49. SY49/4491 Eype Mouth (SY4491); 18 Jun (P H Sterling).
- 74.001 *Meganola strigula* ([Denis & Schiffermüller], 1775) **SMALL BLACK ARCHES** Na
Recorded in: ST71. ST71/7912 Piddles Wood (ST7912); 3 on 26 Jun; 4 on 26 Jun (M S Parsons).

Recorders

Records were gratefully received from the following 249 recorders: A Ashworth; A Bartlett; A Bryant; A Cooper; A Daffern; A Dickinson; A Greenhough; A Hawkins; A Hibbert; A Hockey; A Hodgson; A Hyland; A Jenkins; A Kennard; A M Davis; A Middleton; A Millar; A Page; A Roberts; A Rose; A Russell; A Stewart; A Tuckey; B D D Young; B Dicker; B Dodge; B F Skinner; B Holmes; B Martin; B Noake; B P Henwood; B Tucker; B Van Den Bremer; B Walbridge; B Young; Butterfly Conservation; C Burden; C Court; C Evans; C F Blyth; C Goodman; C Hales; C Hill; C Morgan; C Peters; C Pinder; C R Burningham; C R C Paul; C Rogers; C Thain; C Whitby; C Whitehead; C Youart; D C G Brown; D Chick; D Cooper; D Couzens; D Diment; D Emery; D Foot; D Gould; D Hoskins; D J Evans; D J Hull; D Kingman; D Leadbetter; D Raper; D Saunders; D Sharpe; D Woodley; E A Pratt; E Brodie; E Kraft; E Pratt; E S Rose; G Balcikonis; G Carr; G Freeman; G Lindsay-Watson; G Linton; G R Hopkins; G Sell; G Wright; H G Wood Homer; H Murray; I Charles; I Davenport; I Gamble; I Kirk; J A Newbould; J Baker; J Bellamy; J Bredemear; J Burge; J C Winterbottom; J Clarke; J Cross; J D McMillan; J Davis; J Dyer; J E Down; J E Slingsby; J Fradgley; J Francis; J Gilbert; J Gordon; J H S Cox; J Hockley; J Kingman; J Knowler; J Lea; J O'Hara; J Rowley; J Southworth; J Summers; J Walls; J Westgate; J Williamson; K Clements; K Gardner; K Gibbs; K Hillman; K Pradel; K Rice; K Tailby; L Bell; L de Whalley; L J Hill; L Kennedy; L McLellan; L Miranda; L Nelson; L Phillips; L Piper; L Pullen; L Smith; L Stuckey; M Bellingham; M Botham; M Brice; M C Townsend; M Cade; M Coffin; M Donegan; M E Hammond; M Forster; M Hetherington; M J Deans; M J Hammond; M Jeffes; M Jones; M Plaxton; M Raper; M S Parsons; M S Warren; M Schalburg; M Walsh; M Waters; Mr A Neil; Mrs A Neil; Mrs Straker; N A Croton; N Alford; N Bourn; N Brown; N Cowling; N Matthews; N Spring; N Tomlinson; P A Davey; P Bruce-Jones; P Clarke; P Davies; P England; P Foxcroft; P H Sterling; P Hadrill; P Harris; P Jones; P Lear; P Lott; P Mcqueen; P Orchard; P Prestidge; P Roberts; P

Scoffield; P Sharpe; P Taylor; P Wakely; P Ward; P Zinnemann-Hope; Portland Bird Observatory; R Blake; R Boswell; R Carpenter; R Clifford; R Cottle; R Cox; R Eden; R Fox; R George; R Lambert; R Lear; R Lloyd; R R Cook; R Redwood; R Robinson; R Smith; R W Adams; R W Steedman; R Walls; R Wheeler; R Wilsher; 'Ricky' Lambert; S Anders; S Breeze; S Deere; S Doggett; S Ellis; S Gregory; S Guy; S Harrison; S Hartstone; S Hassall; S Hatch; S Hockey; S King; S Legg; S Philp; S Swan; S W Smith; S Whitehouse; S Woodley; T A Box; T East; T J Clarke; T Morris; T Somerville; Trackton; V Giavarini; V Nunn; V Taylor; V Balfour; W A Straker; W G Shreeves; W Halcrow; W McCauley; W Raymond & Z Randle.

My apologies if anyone has been omitted from this list.

References

Agassiz, D.J.L., Beavan, S.D. & Heckford, R.J. 2013. *A checklist of the Lepidoptera of the British Isles*. Field Studies Council.