

# DORSET MACRO-MOTHS 2011

## COUNTY MACRO-MOTH RECORDER'S REPORT

LESLIE J. EVANS-HILL FRES

*Butterfly Conservation, Manor Yard, East Lulworth, Dorset BH20 5QP*

*E-mail: levans-hill@butterfly-conservation.org*

### Abstract

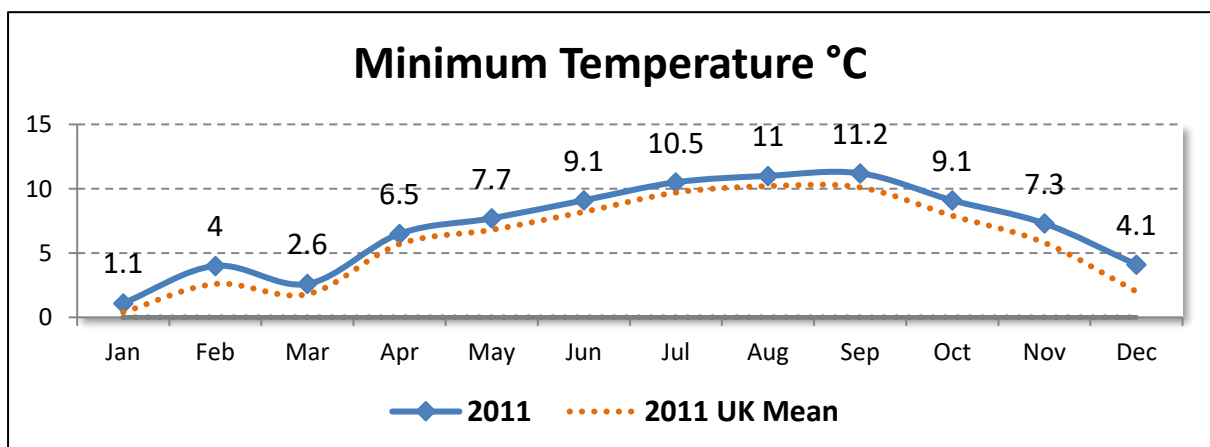
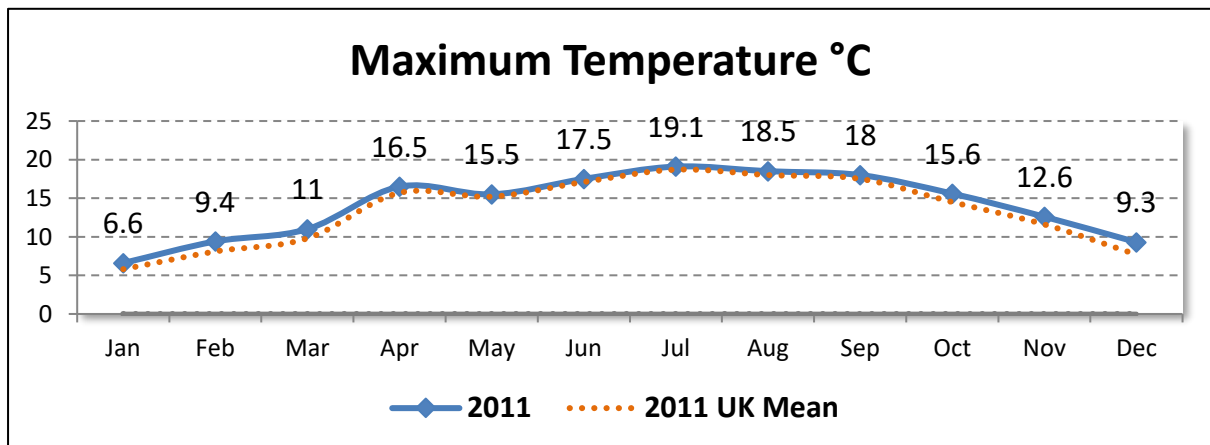
Presented here are data pertaining to submitted records of local macro-moth records of interest during the year 2011 in Dorset administrative and vice-county (9). Errors & omissions expected.

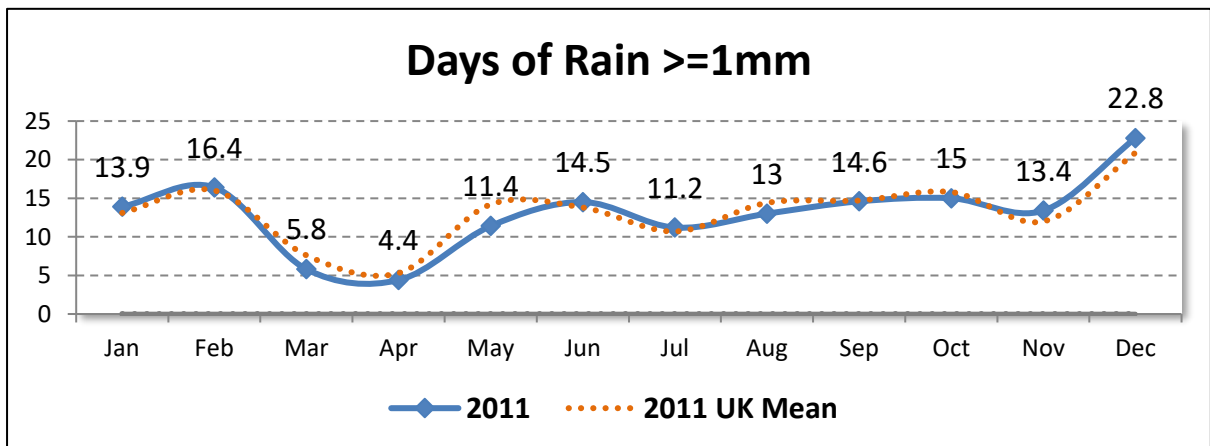
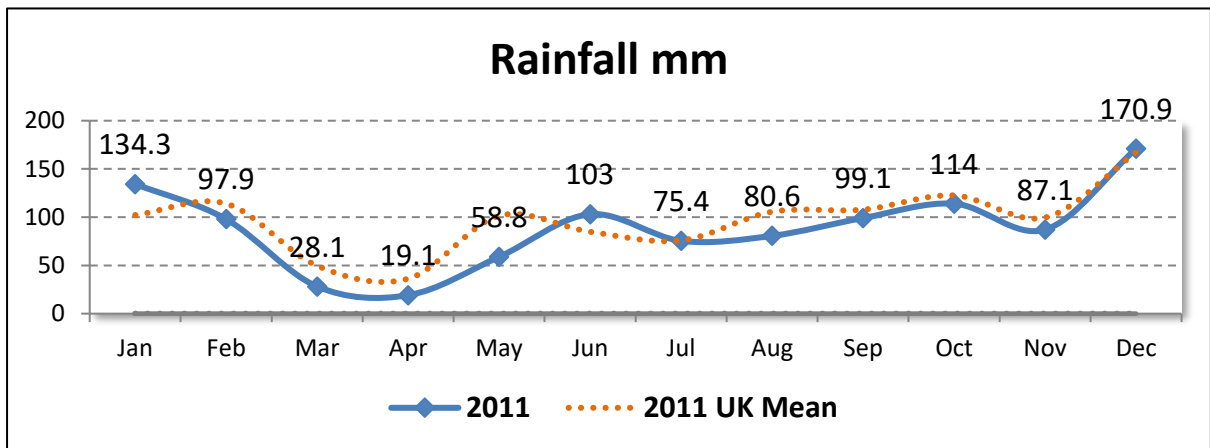
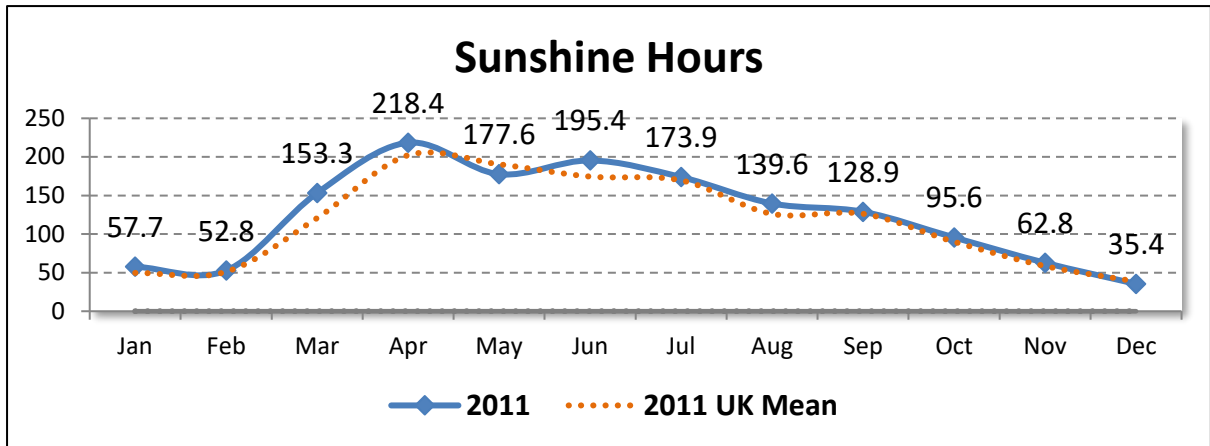
### Records and Species per Year

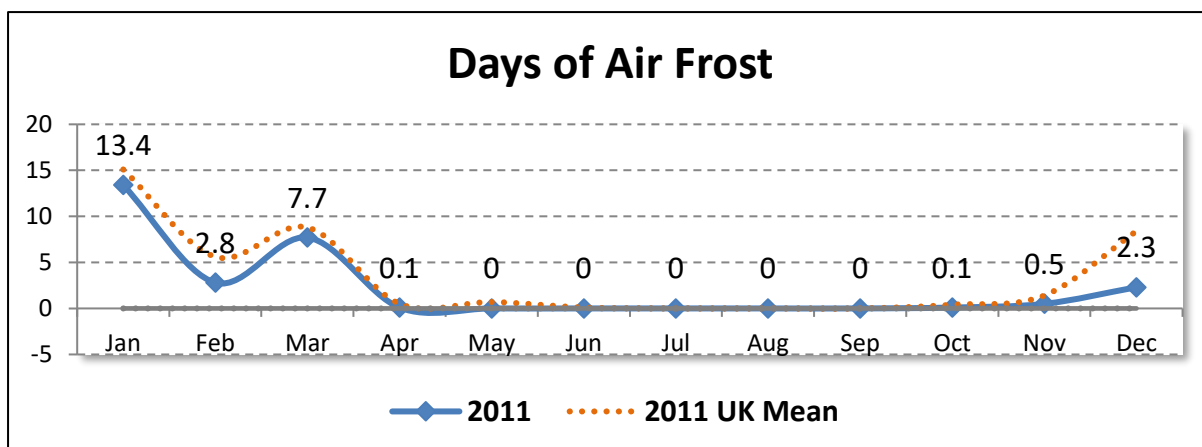
| <i>Year</i> | <i>Records</i> | <i>Species</i> |
|-------------|----------------|----------------|
| <b>2011</b> | 63,262         | 553            |

### Weather

All data are © Crown Copyright. UK Met Office.







### New to Dorset

Two species are confirmed new to Dorset during 2011:

- *Dendrolimus pini* (Linnaeus, 1758) **PINE-TREE LAPPET** from Portland (SY6768); 1 Adult on 22 Aug 2011 by B F Skinner.
- *Hyphoraia testudinaria* (Geoffroy, 1785) **PATTON'S TIGER** from Portland (SY6868); 1 Adult on 06 May 2011 by M Cade.

### Species per 10km

All life stages – Unverified records and records where there is doubt are excluded.

| <i>10km</i> | <i>Species</i> | <i>10km</i> | <i>Species</i> | <i>10km</i> | <i>Species</i> | <i>10km</i> | <i>Species</i> |
|-------------|----------------|-------------|----------------|-------------|----------------|-------------|----------------|
| <b>ST20</b> | 0              | <b>ST82</b> | 56             | <b>SY66</b> | 107            | <b>SZ07</b> | 300            |
| <b>ST30</b> | 121            | <b>ST90</b> | 248            | <b>SY67</b> | 310            | <b>SZ08</b> | 217            |
| <b>ST40</b> | 212            | <b>ST91</b> | 23             | <b>SY68</b> | 331            | <b>SZ09</b> | 295            |
| <b>ST50</b> | 31             | <b>SU00</b> | 155            | <b>SY69</b> | 123            |             |                |
| <b>ST51</b> | 66             | <b>SU01</b> | 193            | <b>SY77</b> | 1              |             |                |
| <b>ST60</b> | 137            | <b>SU02</b> | 0              | <b>SY78</b> | 298            |             |                |
| <b>ST61</b> | 232            | <b>SU10</b> | 0              | <b>SY79</b> | 394            |             |                |
| <b>ST70</b> | 76             | <b>SU11</b> | 310            | <b>SY87</b> | 1              |             |                |
| <b>ST71</b> | 196            | <b>SY39</b> | 260            | <b>SY88</b> | 358            |             |                |
| <b>ST72</b> | 191            | <b>SY48</b> | 16             | <b>SY89</b> | 300            |             |                |
| <b>ST73</b> | 191            | <b>SY49</b> | 276            | <b>SY97</b> | 58             |             |                |
| <b>ST80</b> | 173            | <b>SY58</b> | 355            | <b>SY98</b> | 347            |             |                |
| <b>ST81</b> | 22             | <b>SY59</b> | 184            | <b>SY99</b> | 219            |             |                |

## 2011 Summary

All figures are for adults. Records with vague dates are excluded; however, unverified records are included. For species that overwinter as adults or emerge the year prior, the earliest and latest dates are unavailable.

| <b>Code</b> | <b>Taxon</b>                         | <b>Vernacular</b>                       | <b>Records</b> | <b>Individuals</b> | <b>Earliest</b> | <b>Latest</b> |
|-------------|--------------------------------------|---|----------------|--------------------|-----------------|---------------|
|             | <i>Acronicta tridens/psi</i>         | <b>DARK DAGGER/GREY DAGGER</b>          | 51             | 58                 | 28 Apr          | 30 Sep        |
|             | <i>Amphipoea oculea</i> agg.         | <b>EAR MOTH AGG.</b>                    | 46             | 54                 | 07 Jul          | 23 Aug        |
|             | <i>Amphipyra pyramidea</i> agg.      | <b>COPPER UNDERWING AGG.</b>            | 9              | 15                 | 12 Aug          | 03 Oct        |
|             | <i>Epirrita dilutata</i> agg.        | <b>NOVEMBER MOTH AGG.</b>               | 56             | 119                | 29 Sep          | 24 Nov        |
|             | <i>Euxoa tritici/obelisca</i>        | <b>WHITE-LINE DART/SQUARE-SPOT DART</b> | 21             | 41                 | 01 Jul          | 23 Sep        |
|             | <i>Hoplodrina octogenaria/blanda</i> | <b>UNCERTAIN/RUSTIC AGG.</b>            | 1053           | 4737               | 12 May          | 22 Oct        |
|             | <i>Mesapamea secalis</i> agg.        | <b>COMMON RUSTIC AGG.</b>               | 327            | 2191               | 03 Jun          | 30 Sep        |
|             | <i>Oligia strigilis</i> agg.         | <b>MARbled MINOR AGG.</b>               | 227            | 808                | 05 May          | 08 Aug        |
| 3.001       | <i>Triodia sylvina</i>               | <b>ORANGE SWIFT</b>                     | 152            | 201                | 27 Jul          | 29 Sep        |
| 3.002       | <i>Korscheltellus lupulina</i>       | <b>COMMON SWIFT</b>                     | 234            | 558                | 24 Apr          | 14 Jul        |
| 3.004       | <i>Phymatopus hecta</i>              | <b>GOLD SWIFT</b>                       | 1              | 1                  | 02 Jul          | 02 Jul        |
| 3.005       | <i>Hepialus humuli</i>               | <b>GHOST MOTH</b>                       | 44             | 47                 | 21 May          | 13 Aug        |
| 50.002      | <i>Zeuzera pyrina</i>                | <b>LEOPARD MOTH</b>                     | 9              | 12                 | 25 Jun          | 04 Aug        |
| 52.014      | <i>Bembecia ichneumoniformis</i>     | <b>SIX-BELTED CLEARWING</b>             | 2              | 3                  | 30 Jun          | 02 Jul        |
| 53.001      | <i>Apoda limacodes</i>               | <b>FESTOON</b>                          | 30             | 36                 | 14 Jun          | 29 Jul        |
| 54.002      | <i>Adscita statices</i>              | <b>FORESTER</b>                         | 3              | 78                 | 14 May          | 11 Jun        |
| 54.003      | <i>Adscita geryon</i>                | <b>CISTUS FORESTER</b>                  | 1              | 1                  | 23 Jun          | 23 Jun        |
| 54.008      | <i>Zygaena filipendulae</i>          | <b>SIX-SPOT BURNET</b>                  | 76             | 284                | 15 May          | 31 Aug        |
| 54.009      | <i>Zygaena lonicerae</i>             | <b>NARROW-BORDERED FIVE-SPOT BURNET</b> | 12             | 268                | 02 Jun          | 03 Jul        |
| 54.010      | <i>Zygaena trifolii</i>              | <b>FIVE-SPOT BURNET</b>                 | 20             | 104                | 01 Jun          | 31 Jul        |
| 65.001      | <i>Falcaria lacertinaria</i>         | <b>SCALLOPED HOOK-TIP</b>               | 68             | 85                 | 10 Apr          | 21 Aug        |
| 65.002      | <i>Watsonalla binaria</i>            | <b>OAK HOOK-TIP</b>                     | 51             | 65                 | 22 Apr          | 16 Aug        |
| 65.003      | <i>Watsonalla cultraria</i>          | <b>BARRED HOOK-TIP</b>                  | 4              | 4                  | 29 Apr          | 01 Sep        |
| 65.005      | <i>Drepana falcataria</i>            | <b>PEBBLE HOOK-TIP</b>                  | 132            | 163                | 20 Apr          | 29 Aug        |
| 65.007      | <i>Cilix glaucata</i>                | <b>CHINESE CHARACTER</b>                | 248            | 294                | 06 Apr          | 19 Sep        |

| <b>Code</b> | <b>Taxon</b>                    | <b>Vernacular</b>                    | <b>Records</b> | <b>Individuals</b> | <b>Earliest</b> | <b>Latest</b> |
|-------------|---------------------------------|--------------------------------------|----------------|--------------------|-----------------|---------------|
| 65.008      | <i>Thyatira batis</i>           | <b>PEACH BLOSSOM</b>                 | 52             | 56                 | 02 Jun          | 02 Sep        |
| 65.009      | <i>Habrosyne pyritoides</i>     | <b>BUFF ARCHES</b>                   | 291            | 429                | 02 Jun          | 06 Aug        |
| 65.010      | <i>Tethea ocularis</i>          | <b>FIGURE OF EIGHTY</b>              | 30             | 33                 | 24 Apr          | 28 Jul        |
| 65.013      | <i>Ochropacha duplaris</i>      | <b>COMMON LUTESTRING</b>             | 9              | 9                  | 19 Jun          | 01 Aug        |
| 65.014      | <i>Cymatophorina diluta</i>     | <b>OAK LUTESTRING</b>                | 2              | 21                 | 02 Sep          | 09 Sep        |
| 65.015      | <i>Polyploca ridens</i>         | <b>FROSTED GREEN</b>                 | 48             | 120                | 30 Mar          | 02 May        |
| 65.016      | <i>Achlya flavicornis</i>       | <b>YELLOW HORNED</b>                 | 34             | 68                 | 23 Feb          | 16 Apr        |
| 66.001      | <i>Poecilocampa populi</i>      | <b>DECEMBER MOTH</b>                 | 73             | 364                | Unavailable     | Unavailable   |
| 66.002      | <i>Trichiura crataegi</i>       | <b>PALE EGGAR</b>                    | 54             | 87                 | 21 Aug          | 25 Sep        |
| 66.003      | <i>Malacosoma neustria</i>      | <b>LACKEY</b>                        | 185            | 269                | 02 Jun          | 13 Aug        |
| 66.005      | <i>Eriogaster lanestris</i>     | <b>SMALL EGGAR</b>                   | 7              | 7                  | 15 Mar          | 27 Mar        |
| 66.007      | <i>Lasiocampa quercus</i>       | <b>OAK EGGAR</b>                     | 46             | 54                 | 23 Jun          | 06 Sep        |
| 66.008      | <i>Macrothylacia rubi</i>       | <b>FOX MOTH</b>                      | 44             | 65                 | 19 Apr          | 02 Jul        |
| 66.009      | <i>Dendrolimus pini</i>         | <b>PINE-TREE LAPPET</b>              | 1              | 1                  | 22 Aug          | 22 Aug        |
| 66.010      | <i>Euthrix potatoria</i>        | <b>DRINKER</b>                       | 140            | 207                | 08 Jun          | 30 Aug        |
| 66.012      | <i>Gastropacha quercifolia</i>  | <b>LAPPET</b>                        | 22             | 27                 | 15 Jun          | 21 Jul        |
| 68.001      | <i>Saturnia pavonia</i>         | <b>EMPEROR MOTH</b>                  | 3              | 3                  | 22 Apr          | 05 May        |
| 69.001      | <i>Mimas tiliae</i>             | <b>LIME HAWK-MOTH</b>                | 21             | 22                 | 24 Apr          | 27 Jun        |
| 69.002      | <i>Smerinthus ocellata</i>      | <b>EYED HAWK-MOTH</b>                | 81             | 93                 | 19 Apr          | 12 Jul        |
| 69.003      | <i>Laothoe populi</i>           | <b>POPLAR HAWK-MOTH</b>              | 352            | 429                | 21 Apr          | 25 Aug        |
| 69.004      | <i>Agrius convolvuli</i>        | <b>CONVOLVULUS HAWK-MOTH</b>         | 42             | 54                 | 06 Aug          | 14 Nov        |
| 69.005      | <i>Acherontia atropos</i>       | <b>DEATH'S-HEAD HAWK-MOTH</b>        | 2              | 2                  | 04 Oct          | 11 Nov        |
| 69.006      | <i>Sphinx ligustri</i>          | <b>PRIVET HAWK-MOTH</b>              | 151            | 193                | 05 May          | 26 Jul        |
| 69.007      | <i>Sphinx pinastri</i>          | <b>PINE HAWK-MOTH</b>                | 47             | 50                 | 11 May          | 09 Sep        |
| 69.008      | <i>Hemaris tityus</i>           | <b>NARROW-BORDERED BEE HAWK-MOTH</b> | 2              | 6                  | 13 May          | 13 May        |
| 69.009      | <i>Hemaris fuciformis</i>       | <b>BROAD-BORDERED BEE HAWK-MOTH</b>  | 5              | 5                  | 22 Apr          | 26 Jun        |
| 69.010      | <i>Macroglossum stellatarum</i> | <b>HUMMING-BIRD HAWK-MOTH</b>        | 309            | 366                | 06 Mar          | 20 Nov        |
| 69.011      | <i>Daphnis nerii</i>            | <b>OLEANDER HAWK-MOTH</b>            | 1              | 1                  | 20 Sep          | 20 Sep        |

| <i>Code</i> | <i>Taxon</i>                   | <i>Vernacular</i>               | <i>Records</i> | <i>Individuals</i> | <i>Earliest</i> | <i>Latest</i> |
|-------------|--------------------------------|---------------------------------|----------------|--------------------|-----------------|---------------|
| 69.014      | <i>Hyles gallii</i>            | <b>BEDSTRAW HAWK-MOTH</b>       | 2              | 2                  | 20 Jul          | 21 Jul        |
| 69.015      | <i>Hyles livornica</i>         | <b>STRIPED HAWK-MOTH</b>        | 1              | 1                  | 16 Jul          | 16 Jul        |
| 69.016      | <i>Deilephila elpenor</i>      | <b>ELEPHANT HAWK-MOTH</b>       | 429            | 763                | 01 May          | 31 Aug        |
| 69.017      | <i>Deilephila porcellus</i>    | <b>SMALL ELEPHANT HAWK-MOTH</b> | 130            | 277                | 16 May          | 13 Aug        |
| 69.018      | <i>Hippotion celerio</i>       | <b>SILVER-STRIPED HAWK-MOTH</b> | 3              | 3                  | 02 Oct          | 06 Dec        |
| 70.002      | <i>Idaea muricata</i>          | <b>PURPLE-BORDERED GOLD</b>     | 1              | 4                  | 05 Jul          | 05 Jul        |
| 70.003      | <i>Idaea ochrata</i>           | <b>BRIGHT WAVE</b>              | 1              | 1                  | 05 Jul          | 05 Jul        |
| 70.004      | <i>Idaea rusticata</i>         | <b>LEAST CARPET</b>             | 9              | 9                  | 28 Jun          | 01 Sep        |
| 70.006      | <i>Idaea fuscovenosa</i>       | <b>DWARF CREAM WAVE</b>         | 59             | 74                 | 03 Jun          | 02 Aug        |
| 70.008      | <i>Idaea seriata</i>           | <b>SMALL DUSTY WAVE</b>         | 81             | 86                 | 12 May          | 27 Sep        |
| 70.009      | <i>Idaea subsericeata</i>      | <b>SATIN WAVE</b>               | 15             | 16                 | 02 Jun          | 24 Aug        |
| 70.011      | <i>Idaea dimidiata</i>         | <b>SINGLE-DOTTED WAVE</b>       | 346            | 503                | 30 May          | 01 Oct        |
| 70.012      | <i>Idaea trigeminata</i>       | <b>TREBLE BROWN SPOT</b>        | 108            | 221                | 06 May          | 19 Aug        |
| 70.013      | <i>Idaea biselata</i>          | <b>SMALL FAN-FOOTED WAVE</b>    | 293            | 702                | 10 May          | 12 Oct        |
| 70.015      | <i>Idaea emarginata</i>        | <b>SMALL SCALLOP</b>            | 7              | 7                  | 19 Jul          | 09 Aug        |
| 70.016      | <i>Idaea aversata</i>          | <b>RIBAND WAVE</b>              | 798            | 2455               | 09 May          | 03 Oct        |
| 70.017      | <i>Idaea degeneraria</i>       | <b>PORTLAND RIBBON WAVE</b>     | 9              | 13                 | 09 May          | 01 Oct        |
| 70.018      | <i>Idaea straminata</i>        | <b>PLAIN WAVE</b>               | 12             | 14                 | 25 Jun          | 20 Aug        |
| 70.023      | <i>Scopula marginepunctata</i> | <b>MULLEIN WAVE</b>             | 53             | 60                 | 09 May          | 30 Sep        |
| 70.024      | <i>Scopula imitaria</i>        | <b>SMALL BLOOD-VEIN</b>         | 151            | 180                | 29 May          | 30 Sep        |
| 70.025      | <i>Scopula immutata</i>        | <b>LESSER CREAM WAVE</b>        | 2              | 3                  | 20 Jun          | 20 Aug        |
| 70.027      | <i>Scopula floslactata</i>     | <b>CREAM WAVE</b>               | 39             | 51                 | 03 May          | 02 Jul        |
| 70.028      | <i>Scopula emutaria</i>        | <b>ROSY WAVE</b>                | 1              | 1                  | 05 Aug          | 05 Aug        |
| 70.029      | <i>Timandra comae</i>          | <b>BLOOD-VEIN</b>               | 226            | 310                | 06 May          | 11 Oct        |
| 70.030      | <i>Cyclophora pendularia</i>   | <b>DINGY MOCHA</b>              | 5              | 7                  | 30 Apr          | 01 Aug        |
| 70.031      | <i>Cyclophora annularia</i>    | <b>MOCHA</b>                    | 9              | 11                 | 23 Apr          | 16 Aug        |
| 70.032      | <i>Cyclophora albipunctata</i> | <b>BIRCH MOCHA</b>              | 15             | 15                 | 08 Apr          | 29 Aug        |
| 70.033      | <i>Cyclophora puppillaria</i>  | <b>BLAIR'S MOCHA</b>            | 2              | 2                  | 29 Sep          | 01 Oct        |

| <i>Code</i> | <i>Taxon</i>                     | <i>Vernacular</i>            | <i>Records</i> | <i>Individuals</i> | <i>Earliest</i> | <i>Latest</i> |
|-------------|----------------------------------|------------------------------|----------------|--------------------|-----------------|---------------|
| 70.036      | <i>Cyclophora punctaria</i>      | MAIDEN'S BLUSH               | 99             | 131                | 20 Apr          | 23 Sep        |
| 70.037      | <i>Cyclophora linearia</i>       | CLAY TRIPLE-LINES            | 26             | 37                 | 23 Apr          | 10 Sep        |
| 70.038      | <i>Rhodometra sacraria</i>       | VESTAL                       | 112            | 192                | 28 Jun          | 17 Nov        |
| 70.041      | <i>Scotopteryx luridata</i>      | JULY BELLE                   | 7              | 7                  | 19 Jun          | 05 Aug        |
| 70.043      | <i>Scotopteryx bipunctaria</i>   | CHALK CARPET                 | 35             | 78                 | 01 Jul          | 10 Sep        |
| 70.045      | <i>Scotopteryx chenopodiata</i>  | SHADED BROAD-BAR             | 35             | 50                 | 03 Jul          | 13 Aug        |
| 70.047      | <i>Nycterosea obstipata</i>      | GEM                          | 47             | 53                 | 14 Jun          | 23 Nov        |
| 70.049      | <i>Xanthorhoe fluctuata</i>      | GARDEN CARPET                | 333            | 445                | 14 Apr          | 30 Oct        |
| 70.051      | <i>Xanthorhoe spadicearia</i>    | RED TWIN-SPOT CARPET         | 342            | 580                | 07 Apr          | 02 Sep        |
| 70.052      | <i>Xanthorhoe ferrugata</i>      | DARK-BARRED TWIN-SPOT CARPET | 3              | 3                  | 28 Jun          | 12 Jul        |
| 70.053      | <i>Xanthorhoe designata</i>      | FLAME CARPET                 | 50             | 55                 | 21 Apr          | 16 Sep        |
| 70.054      | <i>Xanthorhoe montanata</i>      | SILVER-GROUND CARPET         | 179            | 312                | 28 Apr          | 12 Jul        |
| 70.056      | <i>Catarhoe cuculata</i>         | ROYAL MANTLE                 | 1              | 1                  | 27 Jul          | 27 Jul        |
| 70.057      | <i>Catarhoe rubidata</i>         | RUDDY CARPET                 | 1              | 1                  | 03 Jun          | 03 Jun        |
| 70.058      | <i>Costaconvexa polygrammata</i> | MANY-LINED                   | 1              | 1                  | 29 Sep          | 29 Sep        |
| 70.059      | <i>Camptogramma bilineata</i>    | YELLOW SHELL                 | 111            | 140                | 25 May          | 29 Sep        |
| 70.061      | <i>Epirrhoe alternata</i>        | COMMON CARPET                | 424            | 669                | 21 Apr          | 30 Sep        |
| 70.062      | <i>Epirrhoe rivata</i>           | WOOD CARPET                  | 14             | 47                 | 25 May          | 22 Aug        |
| 70.063      | <i>Epirrhoe galiata</i>          | GALIUM CARPET                | 14             | 17                 | 16 May          | 03 Sep        |
| 70.064      | <i>Euphyia biangulata</i>        | CLOAKED CARPET               | 10             | 12                 | 03 Jun          | 19 Aug        |
| 70.065      | <i>Euphyia unangulata</i>        | SHARP-ANGLED CARPET          | 13             | 16                 | 04 Jun          | 23 Aug        |
| 70.066      | <i>Earophila badiata</i>         | SHOULDER STRIPE              | 64             | 86                 | 11 Mar          | 10 May        |
| 70.067      | <i>Anticlea derivata</i>         | STREAMER                     | 66             | 87                 | 27 Mar          | 02 Jun        |
| 70.068      | <i>Mesoleuca albicillata</i>     | BEAUTIFUL CARPET             | 2              | 2                  | 21 Jun          | 12 Jul        |
| 70.069      | <i>Pelurga comitata</i>          | DARK SPINACH                 | 1              | 1                  | 26 Jul          | 26 Jul        |
| 70.070      | <i>Larentia clavaria</i>         | MALLOW                       | 38             | 42                 | 20 Sep          | 31 Oct        |
| 70.074      | <i>Hydriomena furcata</i>        | JULY HIGHFLYER               | 189            | 320                | 14 Jun          | 29 Aug        |
| 70.075      | <i>Hydriomena impluviata</i>     | MAY HIGHFLYER                | 25             | 38                 | 07 Apr          | 07 Jun        |

| <b>Code</b> | <b>Taxon</b>                     | <b>Vernacular</b>            | <b>Records</b> | <b>Individuals</b> | <b>Earliest</b> | <b>Latest</b> |
|-------------|----------------------------------|------------------------------|----------------|--------------------|-----------------|---------------|
| 70.077      | <i>Pennithera firmata</i>        | <b>PINE CARPET</b>           | 128            | 195                | 01 Jun          | 11 Nov        |
| 70.079      | <i>Thera britannica</i>          | <b>SPRUCE CARPET</b>         | 139            | 340                | 10 Apr          | 24 Nov        |
| 70.081      | <i>Thera obeliscata</i>          | <b>GREY PINE CARPET</b>      | 160            | 279                | 08 Apr          | 22 Nov        |
| 70.083      | <i>Thera cupressata</i>          | <b>CYPRESS CARPET</b>        | 99             | 113                | 15 May          | 25 Nov        |
| 70.084      | <i>Plemyria rubiginata</i>       | <b>BLUE-BORDERED CARPET</b>  | 30             | 35                 | 03 Jun          | 10 Jul        |
| 70.085      | <i>Cidaria fulvata</i>           | <b>BARRED YELLOW</b>         | 73             | 84                 | 24 May          | 11 Jul        |
| 70.086      | <i>Electrophaes corylata</i>     | <b>BROKEN-BARRED CARPET</b>  | 36             | 47                 | 23 Apr          | 14 Jun        |
| 70.087      | <i>Cosmorhoe ocellata</i>        | <b>PURPLE BAR</b>            | 31             | 32                 | 09 May          | 01 Sep        |
| 70.089      | <i>Eulithis prunata</i>          | <b>PHOENIX</b>               | 49             | 56                 | 03 Jun          | 20 Aug        |
| 70.090      | <i>Eulithis testata</i>          | <b>CHEVRON</b>               | 7              | 7                  | 19 Jun          | 24 Aug        |
| 70.092      | <i>Eulithis mellinata</i>        | <b>SPINACH</b>               | 4              | 4                  | 21 May          | 20 Jun        |
| 70.093      | <i>Gandaritis pyraliata</i>      | <b>BARRED STRAW</b>          | 132            | 178                | 03 Jun          | 01 Aug        |
| 70.094      | <i>Ecliptopera silaceata</i>     | <b>SMALL PHOENIX</b>         | 68             | 101                | 19 Apr          | 02 Sep        |
| 70.095      | <i>Chloroclysta siterata</i>     | <b>RED-GREEN CARPET</b>      | 155            | 252                | Unavailable     | Unavailable   |
| 70.097      | <i>Dysstroma truncata</i>        | <b>COMMON MARBLED CARPET</b> | 455            | 704                | 07 Apr          | 17 Nov        |
| 70.099      | <i>Colostygia olivata</i>        | <b>BEECH-GREEN CARPET</b>    | 1              | 25                 | 12 Aug          | 12 Aug        |
| 70.100      | <i>Colostygia pectinataria</i>   | <b>GREEN CARPET</b>          | 235            | 424                | 24 Apr          | 30 Sep        |
| 70.101      | <i>Colostygia multistrigaria</i> | <b>MOTTLED GREY</b>          | 12             | 28                 | 07 Feb          | 22 Dec        |
| 70.103      | <i>Lampropteryx suffumata</i>    | <b>WATER CARPET</b>          | 61             | 158                | 15 Mar          | 07 May        |
| 70.104      | <i>Lampropteryx otregiata</i>    | <b>DEVON CARPET</b>          | 1              | 1                  | 20 May          | 20 May        |
| 70.105      | <i>Operophtera fagata</i>        | <b>NORTHERN WINTER MOTH</b>  | 4              | 4                  | 07 Nov          | 25 Nov        |
| 70.106      | <i>Operophtera brumata</i>       | <b>WINTER MOTH</b>           | 51             | 145                | Unavailable     | Unavailable   |
| 70.107      | <i>Epirrita dilutata</i>         | <b>NOVEMBER MOTH</b>         | 7              | 30                 | 14 Oct          | 02 Nov        |
| 70.109      | <i>Epirrita autumnata</i>        | <b>AUTUMNAL MOTH</b>         | 4              | 7                  | 09 Sep          | 30 Oct        |
| 70.111      | <i>Asthena albulata</i>          | <b>SMALL WHITE WAVE</b>      | 20             | 35                 | 22 Apr          | 12 Aug        |
| 70.112      | <i>Euchoeca nebulata</i>         | <b>DINGY SHELL</b>           | 6              | 6                  | 17 May          | 22 Aug        |
| 70.114      | <i>Hydrelia flammeolaria</i>     | <b>SMALL YELLOW WAVE</b>     | 32             | 42                 | 25 May          | 26 Jul        |
| 70.117      | <i>Minoa murinata</i>            | <b>DRAB LOOPER</b>           | 4              | 21                 | 27 Apr          | 19 May        |



| <i>Code</i> | <i>Taxon</i>                    | <i>Vernacular</i>          | <i>Records</i> | <i>Individuals</i> | <i>Earliest</i> | <i>Latest</i> |
|-------------|---------------------------------|----------------------------|----------------|--------------------|-----------------|---------------|
| 70.118      | <i>Philereme vetulata</i>       | <b>BROWN SCALLOP</b>       | 5              | 5                  | 26 Jun          | 22 Jul        |
| 70.119      | <i>Philereme transversata</i>   | <b>DARK UMBER</b>          | 20             | 27                 | 03 Jul          | 29 Jul        |
| 70.121      | <i>Rheumaptera undulata</i>     | <b>SCALLOP SHELL</b>       | 35             | 36                 | 14 Jun          | 03 Aug        |
| 70.126      | <i>Horisme vitalbata</i>        | <b>SMALL WAVED UMBER</b>   | 70             | 87                 | 23 Apr          | 29 Aug        |
| 70.127      | <i>Horisme tersata</i>          | <b>FERN</b>                | 20             | 24                 | 29 May          | 02 Aug        |
| 70.128      | <i>Melanthia procellata</i>     | <b>PRETTY CHALK CARPET</b> | 23             | 28                 | 24 Apr          | 01 Sep        |
| 70.130      | <i>Odezia atrata</i>            | <b>CHIMNEY SWEEPER</b>     | 3              | 16                 | 07 Jun          | 02 Jul        |
| 70.131      | <i>Mesotype didymata</i>        | <b>TWIN-SPOT CARPET</b>    | 2              | 26                 | 25 Jun          | 20 Jul        |
| 70.132      | <i>Perizoma affinitata</i>      | <b>RIVULET</b>             | 49             | 56                 | 23 Apr          | 29 Aug        |
| 70.133      | <i>Perizoma alchemillata</i>    | <b>SMALL RIVULET</b>       | 67             | 89                 | 09 May          | 10 Aug        |
| 70.134      | <i>Perizoma bifaciata</i>       | <b>BARRED RIVULET</b>      | 8              | 8                  | 11 Jul          | 03 Aug        |
| 70.137      | <i>Perizoma albulata</i>        | <b>GRASS RIVULET</b>       | 12             | 12                 | 11 May          | 25 Jul        |
| 70.138      | <i>Perizoma flavofasciata</i>   | <b>SANDY CARPET</b>        | 39             | 49                 | 06 May          | 28 Jul        |
| 70.141      | <i>Gymnoscelis rufifasciata</i> | <b>DOUBLE-STRIPED PUG</b>  | 546            | 946                | 22 Feb          | 03 Dec        |
| 70.142      | <i>Chloroclystis v-ata</i>      | <b>V-PUG</b>               | 163            | 215                | 02 Apr          | 04 Oct        |
| 70.143      | <i>Pasiphila chloerata</i>      | <b>SLOE PUG</b>            | 15             | 20                 | 27 May          | 04 Jul        |
| 70.144      | <i>Pasiphila rectangulata</i>   | <b>GREEN PUG</b>           | 164            | 256                | 15 May          | 08 Aug        |
| 70.146      | <i>Eupithecia haworthiata</i>   | <b>HAWORTH'S PUG</b>       | 23             | 47                 | 02 Jun          | 21 Aug        |
| 70.147      | <i>Eupithecia tenuiata</i>      | <b>SLENDER PUG</b>         | 22             | 32                 | 26 Jun          | 19 Aug        |
| 70.148      | <i>Eupithecia inturbata</i>     | <b>MAPLE PUG</b>           | 33             | 93                 | 02 Jul          | 11 Aug        |
| 70.150      | <i>Eupithecia linariata</i>     | <b>TOADFLAX PUG</b>        | 5              | 5                  | 12 Jul          | 21 Aug        |
| 70.151      | <i>Eupithecia pulchellata</i>   | <b>FOXGLOVE PUG</b>        | 37             | 41                 | 22 Apr          | 13 Jul        |
| 70.152      | <i>Eupithecia ultimaria</i>     | <b>CHANNEL ISLANDS PUG</b> | 2              | 3                  | 30 Jul          | 20 Aug        |
| 70.156      | <i>Eupithecia abbreviata</i>    | <b>BRINDLED PUG</b>        | 211            | 733                | 11 Mar          | 15 Jun        |
| 70.157      | <i>Eupithecia dodoneata</i>     | <b>OAK-TREE PUG</b>        | 96             | 179                | 08 Apr          | 27 Jun        |
| 70.159      | <i>Eupithecia phoeniceata</i>   | <b>CYPRESS PUG</b>         | 35             | 39                 | 31 Jul          | 17 Oct        |
| 70.160      | <i>Eupithecia tripunctaria</i>  | <b>WHITE-SPOTTED PUG</b>   | 29             | 33                 | 28 Apr          | 10 Aug        |
| 70.162      | <i>Eupithecia tantillaria</i>   | <b>DWARF PUG</b>           | 15             | 19                 | 17 Apr          | 15 Jun        |

| <i>Code</i> | <i>Taxon</i>                     | <i>Vernacular</i>            | <i>Records</i> | <i>Individuals</i> | <i>Earliest</i> | <i>Latest</i> |
|-------------|----------------------------------|------------------------------|----------------|--------------------|-----------------|---------------|
| 70.163      | <i>Eupithecia lariciata</i>      | <b>LARCH PUG</b>             | 3              | 3                  | 04 Jun          | 27 Jul        |
| 70.166      | <i>Eupithecia simplicata</i>     | <b>PLAIN PUG</b>             | 3              | 3                  | 21 Jul          | 26 Jul        |
| 70.168      | <i>Eupithecia nanata</i>         | <b>NARROW-WINGED PUG</b>     | 34             | 42                 | 08 Apr          | 15 Aug        |
| 70.169      | <i>Eupithecia innotata</i>       | <b>ANGLE-BARRED PUG</b>      | 2              | 2                  | 28 May          | 29 Jul        |
| 70.170      | <i>Eupithecia irriguata</i>      | <b>MARbled PUG</b>           | 3              | 44                 | 22 Apr          | 26 Apr        |
| 70.171      | <i>Eupithecia indigata</i>       | <b>OCHREOUS PUG</b>          | 13             | 16                 | 22 Apr          | 28 May        |
| 70.172      | <i>Eupithecia distinctaria</i>   | <b>THYME PUG</b>             | 1              | 20                 | 03 Jun          | 03 Jun        |
| 70.173      | <i>Eupithecia centaureata</i>    | <b>LIME-SPECK PUG</b>        | 190            | 208                | 22 Apr          | 30 Sep        |
| 70.176      | <i>Eupithecia intricata</i>      | <b>FREYER'S PUG</b>          | 24             | 34                 | 28 Apr          | 24 Jul        |
| 70.179      | <i>Eupithecia absinthiata</i>    | <b>WORMWOOD PUG</b>          | 39             | 49                 | 04 May          | 31 Aug        |
| 70.181      | <i>Eupithecia valerianata</i>    | <b>VALERIAN PUG</b>          | 1              | 25                 | 03 Jun          | 03 Jun        |
| 70.182      | <i>Eupithecia assimilata</i>     | <b>CURRENT PUG</b>           | 43             | 47                 | 20 Apr          | 08 Sep        |
| 70.183      | <i>Eupithecia vulgata</i>        | <b>COMMON PUG</b>            | 292            | 457                | 17 Apr          | 17 Aug        |
| 70.184      | <i>Eupithecia exiguata</i>       | <b>MOTTLED PUG</b>           | 57             | 88                 | 29 Mar          | 27 Jul        |
| 70.186      | <i>Eupithecia millefoliata</i>   | <b>YARROW PUG</b>            | 1              | 2                  | 31 Jul          | 31 Jul        |
| 70.187      | <i>Eupithecia icterata</i>       | <b>TAWNY SPECKLED PUG</b>    | 7              | 7                  | 11 Jul          | 24 Aug        |
| 70.188      | <i>Eupithecia succenturiata</i>  | <b>BORDERED PUG</b>          | 3              | 3                  | 02 Jun          | 21 Jul        |
| 70.189      | <i>Eupithecia subumbrata</i>     | <b>SHADED PUG</b>            | 6              | 25                 | 20 May          | 23 Jul        |
| 70.190      | <i>Eupithecia subfuscata</i>     | <b>GREY PUG</b>              | 59             | 69                 | 20 Apr          | 31 Jul        |
| 70.192      | <i>Aplocera plagiata</i>         | <b>TREBLE-BAR</b>            | 15             | 16                 | 30 Apr          | 30 Sep        |
| 70.193      | <i>Aplocera efformata</i>        | <b>LESSER TREBLE-BAR</b>     | 6              | 6                  | 30 Jul          | 07 Sep        |
| 70.195      | <i>Chesias legatella</i>         | <b>STREAK</b>                | 5              | 54                 | 14 Oct          | 03 Nov        |
| 70.198      | <i>Lobophora halterata</i>       | <b>SERAPHIM</b>              | 11             | 15                 | 22 Apr          | 17 May        |
| 70.199      | <i>Pterapherapteryx sexalata</i> | <b>SMALL SERAPHIM</b>        | 24             | 25                 | 02 Jun          | 22 Jul        |
| 70.200      | <i>Acasis viretata</i>           | <b>YELLOW-BARRED BRINDLE</b> | 81             | 104                | 22 Apr          | 09 Sep        |
| 70.201      | <i>Trichopteryx polycommata</i>  | <b>BARRED TOOTH-STRIPED</b>  | 5              | 7                  | 13 Mar          | 28 Mar        |
| 70.202      | <i>Trichopteryx carpinata</i>    | <b>EARLY TOOTH-STRIPED</b>   | 67             | 94                 | 16 Feb          | 06 May        |
| 70.203      | <i>Archiearis parthenias</i>     | <b>ORANGE UNDERWING</b>      | 1              | 5                  | 24 Mar          | 24 Mar        |

| <b>Code</b> | <b>Taxon</b>                       | <b>Vernacular</b>              | <b>Records</b> | <b>Individuals</b> | <b>Earliest</b> | <b>Latest</b> |
|-------------|------------------------------------|--------------------------------|----------------|--------------------|-----------------|---------------|
| 70.205      | <i>Abraxas grossulariata</i>       | <b>MAGPIE MOTH</b>             | 314            | 553                | 01 Jun          | 09 Sep        |
| 70.207      | <i>Lomasipilis marginata</i>       | <b>CLOUDED BORDER</b>          | 239            | 313                | 19 Apr          | 22 Aug        |
| 70.208      | <i>Ligdia adustata</i>             | <b>SCORCHED CARPET</b>         | 50             | 52                 | 24 Mar          | 07 Aug        |
| 70.212      | <i>Macaria alternata</i>           | <b>SHARP-ANGLED PEACOCK</b>    | 138            | 179                | 07 Apr          | 01 Sep        |
| 70.214      | <i>Macaria liturata</i>            | <b>TAWNY-BARRED ANGLE</b>      | 67             | 74                 | 19 Apr          | 01 Sep        |
| 70.217      | <i>Macaria brunneata</i>           | <b>RANNOCH LOOPER</b>          | 11             | 13                 | 03 Jun          | 05 Jun        |
| 70.218      | <i>Chiasmia clathrata</i>          | <b>LATTICED HEATH</b>          | 7              | 8                  | 13 May          | 09 Sep        |
| 70.221      | <i>Cepphis advenaria</i>           | <b>LITTLE THORN</b>            | 22             | 39                 | 06 May          | 21 Jun        |
| 70.222      | <i>Petrophora chlorosata</i>       | <b>BROWN SILVER-LINE</b>       | 123            | 233                | 08 Apr          | 11 Jul        |
| 70.223      | <i>Plagodis pulveraria</i>         | <b>BARRED UMBER</b>            | 2              | 2                  | 23 Apr          | 17 May        |
| 70.224      | <i>Plagodis dolabraria</i>         | <b>SCORCHED WING</b>           | 84             | 159                | 22 Apr          | 27 Jun        |
| 70.225      | <i>Pachynemias hippocastanaria</i> | <b>HORSE CHESTNUT</b>          | 29             | 33                 | 24 Feb          | 03 Nov        |
| 70.226      | <i>Opisthograptis luteolata</i>    | <b>BRIMSTONE MOTH</b>          | 1125           | 2193               | 15 Mar          | 29 Oct        |
| 70.227      | <i>Epione repandaria</i>           | <b>BORDERED BEAUTY</b>         | 62             | 74                 | 14 Jun          | 11 Oct        |
| 70.229      | <i>Pseudopanthera macularia</i>    | <b>SPECKLED YELLOW</b>         | 16             | 21                 | 22 Apr          | 29 Jul        |
| 70.231      | <i>Apeira syringaria</i>           | <b>LILAC BEAUTY</b>            | 36             | 38                 | 03 Jun          | 01 Oct        |
| 70.233      | <i>Ennomos quercinaria</i>         | <b>AUGUST THORN</b>            | 7              | 7                  | 26 Jul          | 30 Aug        |
| 70.234      | <i>Ennomos alniaria</i>            | <b>CANARY-SHOULDERED THORN</b> | 99             | 120                | 22 Jul          | 07 Oct        |
| 70.235      | <i>Ennomos fuscantaria</i>         | <b>DUSKY THORN</b>             | 74             | 93                 | 02 Aug          | 03 Oct        |
| 70.236      | <i>Ennomos erosaria</i>            | <b>SEPTEMBER THORN</b>         | 15             | 26                 | 26 Jun          | 03 Sep        |
| 70.237      | <i>Selenia dentaria</i>            | <b>EARLY THORN</b>             | 479            | 687                | 10 Mar          | 26 Sep        |
| 70.239      | <i>Selenia tetralunaria</i>        | <b>PURPLE THORN</b>            | 63             | 74                 | 29 Mar          | 24 Aug        |
| 70.240      | <i>Odontopera bidentata</i>        | <b>SCALLOPED HAZEL</b>         | 73             | 86                 | 19 Apr          | 12 Jul        |
| 70.241      | <i>Crocallis elinguaris</i>        | <b>SCALLOPED OAK</b>           | 456            | 822                | 08 Jun          | 21 Aug        |
| 70.243      | <i>Ourapteryx sambucaria</i>       | <b>SWALLOW-TAILED MOTH</b>     | 173            | 227                | 14 Jun          | 09 Aug        |
| 70.244      | <i>Colotois pennaria</i>           | <b>FEATHERED THORN</b>         | 154            | 512                | 28 Sep          | 22 Dec        |
| 70.245      | <i>Alsophila aescularia</i>        | <b>MARCH MOTH</b>              | 102            | 187                | 22 Feb          | 20 Apr        |
| 70.246      | <i>Apocheimia hispidaria</i>       | <b>SMALL BRINDLED BEAUTY</b>   | 5              | 139                | 17 Feb          | 11 Mar        |

| <i>Code</i> | <i>Taxon</i>                    | <i>Vernacular</i>           | <i>Records</i> | <i>Individuals</i> | <i>Earliest</i> | <i>Latest</i> |
|-------------|---------------------------------|-----------------------------|----------------|--------------------|-----------------|---------------|
| 70.247      | <i>Phigalia pilosaria</i>       | <b>PALE BRINDLED BEAUTY</b> | 33             | 95                 | 16 Jan          | 08 Dec        |
| 70.248      | <i>Lycia hirtaria</i>           | <b>BRINDLED BEAUTY</b>      | 92             | 285                | 24 Mar          | 29 May        |
| 70.251      | <i>Biston strataria</i>         | <b>OAK BEAUTY</b>           | 158            | 436                | 08 Feb          | 19 Apr        |
| 70.252      | <i>Biston betularia</i>         | <b>PEPPERED MOTH</b>        | 284            | 449                | 21 Apr          | 19 Aug        |
| 70.253      | <i>Agriopis leucophaearia</i>   | <b>SPRING USHER</b>         | 27             | 81                 | 25 Jan          | 16 Mar        |
| 70.254      | <i>Agriopis aurantiaria</i>     | <b>SCARCE UMBER</b>         | 13             | 20                 | 05 Nov          | 25 Nov        |
| 70.255      | <i>Agriopis marginaria</i>      | <b>DOTTED BORDER</b>        | 92             | 179                | 11 Feb          | 16 Apr        |
| 70.256      | <i>Erannis defoliaria</i>       | <b>MOTTLED UMBER</b>        | 55             | 98                 | 01 Jan          | 29 Dec        |
| 70.257      | <i>Menophra abruptaria</i>      | <b>WAVED UMBER</b>          | 97             | 114                | 06 Apr          | 01 Nov        |
| 70.258      | <i>Peribatodes rhomboidaria</i> | <b>WILLOW BEAUTY</b>        | 1009           | 2137               | 08 May          | 20 Nov        |
| 70.262      | <i>Selidosema brunnearia</i>    | <b>BORDERED GREY</b>        | 3              | 4                  | 24 Aug          | 30 Aug        |
| 70.263      | <i>Cleora cinctaria</i>         | <b>RINGED CARPET</b>        | 4              | 8                  | 19 Apr          | 06 May        |
| 70.264      | <i>Deileptenia ribeata</i>      | <b>SATIN BEAUTY</b>         | 18             | 39                 | 20 Jun          | 25 Aug        |
| 70.265      | <i>Alcis repandata</i>          | <b>MOTTLED BEAUTY</b>       | 89             | 188                | 21 May          | 26 Aug        |
| 70.268      | <i>Hypomecis punctinalis</i>    | <b>PALE OAK BEAUTY</b>      | 3              | 3                  | 02 Jun          | 20 Jul        |
| 70.270      | <i>Ectropis crepuscularia</i>   | <b>ENGRAILED</b>            | 169            | 284                | 22 Mar          | 03 Oct        |
| 70.272      | <i>Paradarisa consonaria</i>    | <b>SQUARE SPOT</b>          | 6              | 8                  | 08 Apr          | 17 May        |
| 70.273      | <i>Parectropis similaria</i>    | <b>BRINDLED WHITE-SPOT</b>  | 9              | 9                  | 17 May          | 24 Jul        |
| 70.274      | <i>Aethalura punctulata</i>     | <b>GREY BIRCH</b>           | 5              | 5                  | 21 Apr          | 28 May        |
| 70.275      | <i>Ematurga atomaria</i>        | <b>COMMON HEATH</b>         | 10             | 12                 | 28 Apr          | 25 Aug        |
| 70.276      | <i>Bupalus piniaria</i>         | <b>BORDERED WHITE</b>       | 9              | 16                 | 14 Jun          | 22 Jul        |
| 70.277      | <i>Cabera pusaria</i>           | <b>COMMON WHITE WAVE</b>    | 87             | 96                 | 15 Apr          | 26 Aug        |
| 70.278      | <i>Cabera exanthemata</i>       | <b>COMMON WAVE</b>          | 153            | 165                | 09 Apr          | 21 Sep        |
| 70.279      | <i>Lomographa bimaculata</i>    | <b>WHITE-PINION SPOTTED</b> | 10             | 12                 | 22 Apr          | 02 Jun        |
| 70.280      | <i>Lomographa temerata</i>      | <b>CLOUDED SILVER</b>       | 153            | 227                | 20 Apr          | 31 Jul        |
| 70.282      | <i>Theria primaria</i>          | <b>EARLY MOTH</b>           | 29             | 36                 | 08 Feb          | 07 Apr        |
| 70.283      | <i>Campaea margaritaria</i>     | <b>LIGHT EMERALD</b>        | 259            | 365                | 13 May          | 16 Oct        |
| 70.284      | <i>Hylaea fasciaria</i>         | <b>BARRED RED</b>           | 37             | 40                 | 06 May          | 03 Oct        |

| <i>Code</i> | <i>Taxon</i>                    | <i>Vernacular</i>        | <i>Records</i> | <i>Individuals</i> | <i>Earliest</i> | <i>Latest</i> |
|-------------|---------------------------------|--------------------------|----------------|--------------------|-----------------|---------------|
| 70.287      | <i>Charissa obscurata</i>       | ANNULET                  | 9              | 10                 | 28 Jul          | 30 Sep        |
| 70.288      | <i>Cleorodes lichenaria</i>     | BRUSSELS LACE            | 229            | 366                | 30 May          | 08 Oct        |
| 70.292      | <i>Dyscia fagaria</i>           | GREY SCALLOPED BAR       | 3              | 3                  | 30 Apr          | 05 May        |
| 70.294      | <i>Aspitates ochrearia</i>      | YELLOW BELLE             | 35             | 35                 | 04 May          | 23 Sep        |
| 70.297      | <i>Pseudoterpna pruinata</i>    | GRASS EMERALD            | 34             | 41                 | 05 Jun          | 02 Sep        |
| 70.299      | <i>Geometra papilionaria</i>    | LARGE EMERALD            | 47             | 63                 | 25 Jun          | 10 Sep        |
| 70.300      | <i>Comibaena bajularia</i>      | BLOTCHED EMERALD         | 7              | 7                  | 02 Jun          | 27 Jun        |
| 70.302      | <i>Hemistola chrysoprasaria</i> | SMALL EMERALD            | 81             | 97                 | 04 Jun          | 30 Sep        |
| 70.303      | <i>Jodis lactearia</i>          | LITTLE EMERALD           | 4              | 4                  | 12 May          | 12 Jul        |
| 70.305      | <i>Hemithea aestivaria</i>      | COMMON EMERALD           | 177            | 246                | 04 Jun          | 31 Aug        |
| 70.306      | <i>Chlorissa viridata</i>       | SMALL GRASS EMERALD      | 1              | 1                  | 26 Jun          | 26 Jun        |
| 71.003      | <i>Cerura vinula</i>            | PUSS MOTH                | 27             | 28                 | 04 Apr          | 02 Jul        |
| 71.005      | <i>Furcula furcula</i>          | SALLOW KITTEN            | 57             | 69                 | 08 Apr          | 02 Sep        |
| 71.007      | <i>Furcula bifida</i>           | POPLAR KITTEN            | 12             | 12                 | 20 Apr          | 27 Jul        |
| 71.009      | <i>Stauropus fagi</i>           | LOBSTER MOTH             | 59             | 73                 | 20 Apr          | 03 Aug        |
| 71.010      | <i>Drymonia dodonaea</i>        | MARBLED BROWN            | 23             | 34                 | 22 Apr          | 10 Jun        |
| 71.011      | <i>Drymonia ruficornis</i>      | LUNAR MARBLED BROWN      | 102            | 265                | 27 Mar          | 12 May        |
| 71.012      | <i>Notodonta dromedarius</i>    | IRON PROMINENT           | 124            | 145                | 07 Apr          | 02 Sep        |
| 71.013      | <i>Notodonta ziczac</i>         | PEBBLE PROMINENT         | 255            | 332                | 29 Mar          | 21 Aug        |
| 71.016      | <i>Peridea anceps</i>           | GREAT PROMINENT          | 92             | 164                | 08 Apr          | 29 May        |
| 71.017      | <i>Pheosia tremula</i>          | SWALLOW PROMINENT        | 149            | 202                | 07 Apr          | 02 Sep        |
| 71.018      | <i>Pheosia gnoma</i>            | LESSER SWALLOW PROMINENT | 188            | 268                | 07 Apr          | 17 Sep        |
| 71.020      | <i>Pterostoma palpina</i>       | PALE PROMINENT           | 152            | 182                | 10 Apr          | 29 Aug        |
| 71.021      | <i>Ptilodon capucina</i>        | COXCOMB PROMINENT        | 50             | 61                 | 14 Apr          | 02 Sep        |
| 71.023      | <i>Odontosia carmelita</i>      | SCARCE PROMINENT         | 15             | 22                 | 08 Apr          | 24 Apr        |
| 71.025      | <i>Phalera bucephala</i>        | BUFF-TIP                 | 307            | 446                | 22 Apr          | 17 Aug        |
| 71.027      | <i>Clostera curtula</i>         | CHOCOLATE-TIP            | 56             | 63                 | 29 Mar          | 18 Aug        |
| 72.001      | <i>Scoliopteryx libatrix</i>    | HERALD                   | 64             | 71                 | Unavailable     | Unavailable   |

| <b>Code</b> | <b>Taxon</b>                    | <b>Vernacular</b>       | <b>Records</b> | <b>Individuals</b> | <b>Earliest</b> | <b>Latest</b> |
|-------------|---------------------------------|-------------------------|----------------|--------------------|-----------------|---------------|
| 72.002      | <i>Rivula sericealis</i>        | <b>STRAW DOT</b>        | 327            | 745                | 09 May          | 14 Oct        |
| 72.003      | <i>Hypena proboscidalis</i>     | <b>SNOUT</b>            | 536            | 932                | 15 May          | 30 Oct        |
| 72.004      | <i>Hypena rostralis</i>         | <b>BUTTONED SNOUT</b>   | 1              | 1                  | 30 Apr          | 30 Apr        |
| 72.006      | <i>Hypena obsitalis</i>         | <b>BLOXWORTH SNOUT</b>  | 8              | 14                 | 21 Jul          | 20 Dec        |
| 72.007      | <i>Hypena crassalis</i>         | <b>BEAUTIFUL SNOUT</b>  | 4              | 5                  | 26 Jun          | 26 Jul        |
| 72.009      | <i>Leucoma salicis</i>          | <b>WHITE SATIN</b>      | 1              | 1                  | 25 Jun          | 25 Jun        |
| 72.010      | <i>Lymantria monacha</i>        | <b>BLACK ARCHES</b>     | 123            | 269                | 27 Jun          | 23 Sep        |
| 72.012      | <i>Euproctis chrysorrhoea</i>   | <b>BROWN-TAIL</b>       | 101            | 249                | 14 Jun          | 11 Aug        |
| 72.013      | <i>Euproctis similis</i>        | <b>YELLOW-TAIL</b>      | 286            | 577                | 22 Jun          | 03 Oct        |
| 72.015      | <i>Calliteara pudibunda</i>     | <b>PALE TUSOCK</b>      | 215            | 389                | 27 Mar          | 08 Jul        |
| 72.016      | <i>Dicallomera fascelina</i>    | <b>DARK TUSOCK</b>      | 2              | 2                  | 22 Jul          | 02 Aug        |
| 72.017      | <i>Orgyia antiqua</i>           | <b>VAPOURER</b>         | 15             | 19                 | 25 Jun          | 11 Oct        |
| 72.019      | <i>Spilosoma lutea</i>          | <b>BUFF ERMINE</b>      | 895            | 2345               | 23 Apr          | 30 Sep        |
| 72.020      | <i>Spilosoma lubricipeda</i>    | <b>WHITE ERMINE</b>     | 368            | 1028               | 08 Apr          | 28 Aug        |
| 72.021      | <i>Spilosoma urticae</i>        | <b>WATER ERMINE</b>     | 1              | 1                  | 14 Jun          | 14 Jun        |
| 72.022      | <i>Diaphora mendica</i>         | <b>MUSLIN MOTH</b>      | 378            | 1105               | 15 Mar          | 04 Aug        |
| 72.023      | <i>Diacrisia sannio</i>         | <b>CLOUDED BUFF</b>     | 14             | 15                 | 27 May          | 05 Jul        |
| 72.024      | <i>Phragmatobia fuliginosa</i>  | <b>RUBY TIGER</b>       | 323            | 1117               | 19 Apr          | 28 Oct        |
| 72.025      | <i>Parasemia plantaginis</i>    | <b>WOOD TIGER</b>       | 14             | 76                 | 16 May          | 17 Jul        |
| 72.026      | <i>Arctia caja</i>              | <b>GARDEN TIGER</b>     | 169            | 220                | 25 Jun          | 24 Sep        |
| 72.027      | <i>Arctia villica</i>           | <b>CREAM-SPOT TIGER</b> | 42             | 70                 | 08 May          | 23 Jun        |
| 72.028      | <i>Hyphoraia testudinaria</i>   | <b>PATTON'S TIGER</b>   | 1              | 1                  | 06 May          | 06 May        |
| 72.029      | <i>Callimorpha dominula</i>     | <b>SCARLET TIGER</b>    | 50             | 90                 | 01 Jun          | 31 Jul        |
| 72.030      | <i>Euplagia quadripunctaria</i> | <b>JERSEY TIGER</b>     | 191            | 453                | 02 Jun          | 08 Sep        |
| 72.031      | <i>Tyria jacobaeae</i>          | <b>CINNABAR</b>         | 181            | 259                | 19 Apr          | 15 Aug        |
| 72.034      | <i>Utetheisa pulchella</i>      | <b>CRIMSON SPECKLED</b> | 3              | 3                  | 09 Oct          | 10 Nov        |
| 72.035      | <i>Miltochrista miniata</i>     | <b>ROSY FOOTMAN</b>     | 244            | 518                | 24 Jun          | 03 Oct        |
| 72.036      | <i>Nudaria mundana</i>          | <b>MUSLIN FOOTMAN</b>   | 39             | 54                 | 22 Jun          | 01 Sep        |

| <b>Code</b> | <b>Taxon</b>                     | <b>Vernacular</b>      | <b>Records</b> | <b>Individuals</b> | <b>Earliest</b> | <b>Latest</b> |
|-------------|----------------------------------|------------------------|----------------|--------------------|-----------------|---------------|
| 72.037      | <i>Thumatha senex</i>            | ROUND-WINGED MUSLIN    | 14             | 33                 | 03 Jun          | 31 Jul        |
| 72.038      | <i>Cybosia mesomella</i>         | FOUR-DOTTED FOOTMAN    | 21             | 23                 | 03 Jun          | 06 Aug        |
| 72.041      | <i>Lithosia quadra</i>           | FOUR-SPOTTED FOOTMAN   | 96             | 172                | 07 Jul          | 31 Oct        |
| 72.042      | <i>Atolmis rubricollis</i>       | RED-NECKED FOOTMAN     | 22             | 44                 | 15 May          | 11 Jul        |
| 72.043      | <i>Eilema depressa</i>           | BUFF FOOTMAN           | 95             | 236                | 15 Jun          | 28 Sep        |
| 72.044      | <i>Eilema griseola</i>           | DINGY FOOTMAN          | 348            | 987                | 24 Jun          | 30 Sep        |
| 72.045      | <i>Eilema lurideola</i>          | COMMON FOOTMAN         | 594            | 2653               | 16 Jun          | 01 Sep        |
| 72.046      | <i>Eilema complana</i>           | SCARCE FOOTMAN         | 111            | 219                | 14 Jun          | 26 Aug        |
| 72.047      | <i>Eilema caniola</i>            | HOARY FOOTMAN          | 4              | 4                  | 26 Jul          | 03 Oct        |
| 72.049      | <i>Eilema sororcula</i>          | ORANGE FOOTMAN         | 94             | 678                | 20 Apr          | 28 Jul        |
| 72.053      | <i>Herminia tarsipennalis</i>    | FAN-FOOT               | 223            | 372                | 02 Jun          | 21 Sep        |
| 72.055      | <i>Herminia grisealis</i>        | SMALL FAN-FOOT         | 83             | 103                | 05 May          | 11 Aug        |
| 72.060      | <i>Hypenodes humidalis</i>       | MARSH OBLIQUE-BARRED   | 1              | 1                  | 27 Jun          | 27 Jun        |
| 72.061      | <i>Schrankia costaestrigalis</i> | PINION-STREAKED SNOUT  | 46             | 48                 | 17 May          | 15 Oct        |
| 72.062      | <i>Schrankia taenialis</i>       | WHITE-LINE SNOUT       | 1              | 1                  | 22 Jul          | 22 Jul        |
| 72.063      | <i>Lygephila pastinum</i>        | BLACKNECK              | 24             | 27                 | 08 Jun          | 27 Jul        |
| 72.067      | <i>Phytometra viridaria</i>      | SMALL PURPLE-BARRED    | 7              | 8                  | 13 May          | 02 Aug        |
| 72.069      | <i>Laspeyria flexula</i>         | BEAUTIFUL HOOK-TIP     | 149            | 196                | 20 May          | 29 Aug        |
| 72.072      | <i>Eublemma ostrina</i>          | PURPLE MARBLED         | 4              | 4                  | 28 Jun          | 12 Nov        |
| 72.073      | <i>Eublemma parva</i>            | SMALL MARBLED          | 73             | 109                | 27 Jun          | 16 Oct        |
| 72.076      | <i>Catocala fraxini</i>          | CLIFDEN NONPAREIL      | 19             | 22                 | 07 Sep          | 06 Oct        |
| 72.078      | <i>Catocala nupta</i>            | RED UNDERWING          | 37             | 41                 | 10 Aug          | 13 Oct        |
| 72.079      | <i>Catocala electa</i>           | ROSY UNDERWING         | 1              | 1                  | 22 Aug          | 22 Aug        |
| 72.081      | <i>Catocala sponsa</i>           | DARK CRIMSON UNDERWING | 1              | 1                  | 16 Sep          | 16 Sep        |
| 72.083      | <i>Euclidia glyphica</i>         | BURNET COMPANION       | 52             | 162                | 22 Apr          | 26 Jun        |
| 72.084      | <i>Euclidia mi</i>               | MOTHER SHIPTON         | 31             | 50                 | 27 Apr          | 10 Jul        |
| 73.001      | <i>Abrostola tripartita</i>      | SPECTACLE              | 364            | 432                | 07 Apr          | 09 Sep        |
| 73.002      | <i>Abrostola triplasia</i>       | DARK SPECTACLE         | 73             | 79                 | 01 May          | 11 Oct        |

| <b>Code</b> | <b>Taxon</b>                    | <b>Vernacular</b>           | <b>Records</b> | <b>Individuals</b> | <b>Earliest</b> | <b>Latest</b> |
|-------------|---------------------------------|-----------------------------|----------------|--------------------|-----------------|---------------|
| 73.003      | <i>Trichoplusia ni</i>          | NI MOTH                     | 38             | 40                 | 09 Jun          | 03 Oct        |
| 73.008      | <i>Chrysodeixis chalcites</i>   | GOLDEN TWIN-SPOT            | 1              | 1                  | 03 Oct          | 03 Oct        |
| 73.010      | <i>Macdunnoughia confusa</i>    | DEWICK'S PLUSIA             | 10             | 10                 | 28 Sep          | 29 Oct        |
| 73.012      | <i>Diachrysia chrysitis</i>     | BURNISHED BRASS             | 301            | 419                | 05 May          | 16 Oct        |
| 73.015      | <i>Autographa gamma</i>         | SILVER Y                    | 976            | 2282               | 19 Mar          | 21 Dec        |
| 73.016      | <i>Autographa pulchrina</i>     | BEAUTIFUL GOLDEN Y          | 55             | 71                 | 17 May          | 16 Aug        |
| 73.017      | <i>Autographa jota</i>          | PLAIN GOLDEN Y              | 78             | 94                 | 29 May          | 25 Sep        |
| 73.022      | <i>Plusia festucae</i>          | GOLD SPOT                   | 35             | 38                 | 09 May          | 09 Sep        |
| 73.024      | <i>Deltote pygarga</i>          | MARbled WHITE SPOT          | 71             | 98                 | 14 May          | 27 Jul        |
| 73.026      | <i>Deltote uncula</i>           | SILVER HOOK                 | 2              | 6                  | 25 Jun          | 10 Jul        |
| 73.031      | <i>Tyta luctuosa</i>            | FOUR-SPOTTED                | 3              | 4                  | 21 Jul          | 31 Jul        |
| 73.032      | <i>Colocasia coryli</i>         | NUT-TREE TUSsock            | 236            | 306                | 27 Mar          | 19 Aug        |
| 73.033      | <i>Diloba caeruleocephala</i>   | FIGURE OF EIGHT             | 37             | 61                 | 19 Sep          | 05 Nov        |
| 73.036      | <i>Acronicta alni</i>           | ALDER MOTH                  | 42             | 66                 | 24 Apr          | 02 Jun        |
| 73.037      | <i>Acronicta tridens</i>        | DARK DAGGER                 | 1              | 1                  | 16 Jul          | 16 Jul        |
| 73.038      | <i>Acronicta psi</i>            | GREY DAGGER                 | 2              | 2                  | 04 May          | 05 May        |
| 73.039      | <i>Acronicta aceris</i>         | SYCAMORE                    | 44             | 48                 | 22 Apr          | 09 Aug        |
| 73.040      | <i>Acronicta leporina</i>       | MILLER                      | 31             | 32                 | 25 May          | 25 Jul        |
| 73.045      | <i>Acronicta rumicis</i>        | KNOT GRASS                  | 211            | 295                | 26 Mar          | 28 Sep        |
| 73.046      | <i>Subacronicta megacephala</i> | POPLAR GREY                 | 55             | 66                 | 23 Apr          | 23 Aug        |
| 73.047      | <i>Craniophora ligustri</i>     | CORONET                     | 180            | 257                | 29 Apr          | 22 Aug        |
| 73.048      | <i>Panemeria tenebrata</i>      | SMALL YELLOW UNDERWING      | 2              | 2                  | 26 Apr          | 26 Apr        |
| 73.052      | <i>Cucullia umbratica</i>       | SHARK                       | 64             | 75                 | 28 Apr          | 29 Jul        |
| 73.053      | <i>Cucullia chamomillae</i>     | CHAMOMILE SHARK             | 10             | 11                 | 01 Apr          | 01 Jun        |
| 73.058      | <i>Cucullia verbasci</i>        | MULLEIN                     | 31             | 33                 | 07 Apr          | 18 Jun        |
| 73.062      | <i>Amphipyra pyramidea</i>      | COPPER UNDERWING            | 92             | 133                | 22 Jun          | 16 Oct        |
| 73.063      | <i>Amphipyra berbera</i>        | SVENSSON'S COPPER UNDERWING | 32             | 44                 | 13 Jul          | 04 Oct        |
| 73.064      | <i>Amphipyra tragopoginis</i>   | MOUSE MOTH                  | 52             | 67                 | 24 Jun          | 19 Sep        |



| <b>Code</b> | <b>Taxon</b>                   | <b>Vernacular</b>              | <b>Records</b> | <b>Individuals</b> | <b>Earliest</b> | <b>Latest</b> |
|-------------|--------------------------------|--------------------------------|----------------|--------------------|-----------------|---------------|
| 73.065      | <i>Asteroscopus sphinx</i>     | <b>SPRAWLER</b>                | 24             | 44                 | 04 Nov          | 25 Nov        |
| 73.068      | <i>Allophyes oxyacanthae</i>   | <b>GREEN-BRINDLED CRESCENT</b> | 190            | 343                | 28 Aug          | 12 Nov        |
| 73.069      | <i>Xylocampa areola</i>        | <b>EARLY GREY</b>              | 318            | 731                | 17 Feb          | 01 May        |
| 73.070      | <i>Pyrrhia umbra</i>           | <b>BORDERED SALLOW</b>         | 29             | 45                 | 17 May          | 25 Sep        |
| 73.074      | <i>Heliothis peltigera</i>     | <b>BORDERED STRAW</b>          | 45             | 49                 | 22 Apr          | 27 Oct        |
| 73.076      | <i>Helicoverpa armigera</i>    | <b>SCARCE BORDERED STRAW</b>   | 58             | 87                 | 29 Apr          | 24 Nov        |
| 73.084      | <i>Bryophila domestica</i>     | <b>MARbled BEAUTY</b>          | 66             | 85                 | 24 Jun          | 10 Sep        |
| 73.085      | <i>Nyctobrya muralis</i>       | <b>MARbled GREEN</b>           | 94             | 109                | 09 Jul          | 28 Sep        |
| 73.087      | <i>Spodoptera exigua</i>       | <b>SMALL MOTTLED WILLOW</b>    | 95             | 260                | 07 Apr          | 30 Oct        |
| 73.091      | <i>Elaphria venustula</i>      | <b>ROSY MARbled</b>            | 2              | 2                  | 02 Jun          | 27 Jun        |
| 73.092      | <i>Caradrina morpheus</i>      | <b>MOTTLED RUSTIC</b>          | 315            | 657                | 10 May          | 22 Sep        |
| 73.093      | <i>Caradrina kadenii</i>       | <b>CLANCY'S RUSTIC</b>         | 39             | 58                 | 19 Sep          | 07 Nov        |
| 73.095      | <i>Caradrina clavipalpis</i>   | <b>PALE MOTTLED WILLOW</b>     | 135            | 163                | 20 Apr          | 16 Oct        |
| 73.099      | <i>Hoplodrina ambigua</i>      | <b>VINE'S RUSTIC</b>           | 1053           | 5649               | 24 Apr          | 24 Nov        |
| 73.100      | <i>Chilodes maritima</i>       | <b>SILKY WAINSCOT</b>          | 5              | 5                  | 27 Jun          | 02 Aug        |
| 73.101      | <i>Charanyca trigrammica</i>   | <b>TREBLE LINES</b>            | 414            | 1366               | 21 Apr          | 06 Aug        |
| 73.102      | <i>Rusina ferruginea</i>       | <b>BROWN RUSTIC</b>            | 82             | 111                | 10 May          | 22 Jul        |
| 73.105      | <i>Dypterygia scabriuscula</i> | <b>BIRD'S WING</b>             | 22             | 22                 | 16 Jun          | 22 Jul        |
| 73.107      | <i>Mormo maura</i>             | <b>OLD LADY</b>                | 28             | 35                 | 17 Jul          | 09 Sep        |
| 73.109      | <i>Thalpophila matura</i>      | <b>STRAW UNDERWING</b>         | 129            | 388                | 30 Jul          | 26 Sep        |
| 73.113      | <i>Phlogophora meticulosa</i>  | <b>ANGLE SHADES</b>            | 433            | 588                | 05 Apr          | 28 Dec        |
| 73.114      | <i>Euplexia lucipara</i>       | <b>SMALL ANGLE SHADES</b>      | 61             | 69                 | 17 May          | 26 Jul        |
| 73.119      | <i>Helotropha leucostigma</i>  | <b>CRESCENT</b>                | 1              | 1                  | 16 Jul          | 16 Jul        |
| 73.120      | <i>Eremobia ochroleuca</i>     | <b>DUSKY SALLOW</b>            | 73             | 103                | 11 Jul          | 09 Sep        |
| 73.121      | <i>Gortyna flavago</i>         | <b>FROSTED ORANGE</b>          | 114            | 158                | 22 Aug          | 16 Oct        |
| 73.123      | <i>Hydraecia micacea</i>       | <b>ROSY RUSTIC</b>             | 366            | 682                | 04 Jul          | 03 Nov        |
| 73.126      | <i>Amphipoea fucosa</i>        | <b>SALTERN EAR</b>             | 1              | 1                  | 12 Jul          | 12 Jul        |
| 73.127      | <i>Amphipoea lucens</i>        | <b>LARGE EAR</b>               | 1              | 1                  | 07 Aug          | 07 Aug        |

| <i>Code</i> | <i>Taxon</i>                   | <i>Vernacular</i>               | <i>Records</i> | <i>Individuals</i> | <i>Earliest</i> | <i>Latest</i> |
|-------------|--------------------------------|---------------------------------|----------------|--------------------|-----------------|---------------|
| 73.131      | <i>Luperina testacea</i>       | <b>FLOUNCED RUSTIC</b>          | 414            | 1354               | 28 Jun          | 29 Oct        |
| 73.134      | <i>Rhizedra lutosa</i>         | <b>LARGE WAINSCOT</b>           | 200            | 271                | 12 Jul          | 17 Nov        |
| 73.135      | <i>Sedina buettneri</i>        | <b>BLAIR'S WAINSCOT</b>         | 1              | 30                 | 28 Sep          | 28 Sep        |
| 73.136      | <i>Nonagria typhae</i>         | <b>BULRUSH WAINSCOT</b>         | 16             | 16                 | 21 Jul          | 29 Sep        |
| 73.137      | <i>Arenostola phragmitidis</i> | <b>FEN WAINSCOT</b>             | 10             | 11                 | 01 Jul          | 04 Aug        |
| 73.139      | <i>Lenisa geminipuncta</i>     | <b>TWIN-SPOTTED WAINSCOT</b>    | 9              | 15                 | 14 Jul          | 31 Aug        |
| 73.141      | <i>Archanara dissoluta</i>     | <b>BROWN-VEINED WAINSCOT</b>    | 7              | 7                  | 07 Jul          | 04 Aug        |
| 73.142      | <i>Coenobia rufa</i>           | <b>SMALL RUFOUS</b>             | 11             | 13                 | 26 Jul          | 23 Aug        |
| 73.144      | <i>Denticucullus pygmina</i>   | <b>SMALL WAINSCOT</b>           | 77             | 116                | 20 Jun          | 11 Oct        |
| 73.145      | <i>Photedes fluxa</i>          | <b>MERE WAINSCOT</b>            | 2              | 11                 | 27 Jul          | 13 Sep        |
| 73.147      | <i>Photedes minima</i>         | <b>SMALL DOTTED BUFF</b>        | 28             | 38                 | 25 May          | 03 Aug        |
| 73.148      | <i>Photedes morrisii</i>       | <b>MORRIS'S WAINSCOT</b>        | 5              | 6                  | 27 Jun          | 25 Jul        |
| 73.151      | <i>Globia sparganii</i>        | <b>WEBB'S WAINSCOT</b>          | 8              | 8                  | 09 Jul          | 08 Sep        |
| 73.154      | <i>Apamea remissa</i>          | <b>DUSKY BROCADE</b>            | 66             | 140                | 25 May          | 27 Aug        |
| 73.155      | <i>Apamea epomidion</i>        | <b>CLOUDED BRINDLE</b>          | 48             | 55                 | 16 May          | 23 Jul        |
| 73.156      | <i>Apamea crenata</i>          | <b>CLOUDED-BORDERED BRINDLE</b> | 74             | 134                | 23 Apr          | 29 Jul        |
| 73.157      | <i>Apamea anceps</i>           | <b>LARGE NUTMEG</b>             | 1              | 1                  | 15 Jun          | 15 Jun        |
| 73.158      | <i>Apamea sordens</i>          | <b>RUSTIC SHOULDER-KNOT</b>     | 136            | 326                | 19 Apr          | 01 Aug        |
| 73.159      | <i>Apamea unanimis</i>         | <b>SMALL CLOUDED BRINDLE</b>    | 19             | 26                 | 10 May          | 11 Jul        |
| 73.160      | <i>Apamea scolopacina</i>      | <b>SLENDER BRINDLE</b>          | 19             | 24                 | 03 Jul          | 29 Jul        |
| 73.162      | <i>Apamea monoglypha</i>       | <b>DARK ARCHES</b>              | 1106           | 6306               | 06 May          | 29 Dec        |
| 73.163      | <i>Apamea lithoxylaea</i>      | <b>LIGHT ARCHES</b>             | 226            | 454                | 28 May          | 06 Aug        |
| 73.164      | <i>Apamea sublustris</i>       | <b>REDDISH LIGHT ARCHES</b>     | 17             | 27                 | 07 Jun          | 28 Jul        |
| 73.168      | <i>Lateroligia ophiogramma</i> | <b>DOUBLE LOBED</b>             | 24             | 40                 | 25 Jun          | 03 Sep        |
| 73.169      | <i>Mesapamea secalis</i>       | <b>COMMON RUSTIC</b>            | 2              | 4                  | 26 Jul          | 09 Aug        |
| 73.170      | <i>Mesapamea didyma</i>        | <b>LESSER COMMON RUSTIC</b>     | 1              | 1                  | 30 Sep          | 30 Sep        |
| 73.171      | <i>Litologia literosa</i>      | <b>ROSY MINOR</b>               | 44             | 80                 | 11 Jul          | 10 Sep        |
| 73.172      | <i>Mesoligia furuncula</i>     | <b>CLOAKED MINOR</b>            | 100            | 125                | 20 Jun          | 02 Sep        |

| <i>Code</i> | <i>Taxon</i>                   | <i>Vernacular</i>     | <i>Records</i> | <i>Individuals</i> | <i>Earliest</i> | <i>Latest</i> |
|-------------|--------------------------------|-----------------------|----------------|--------------------|-----------------|---------------|
| 73.174      | <i>Oligia latruncula</i>       | TAWNY MARBLED MINOR   | 2              | 2                  | 07 Jun          | 02 Jul        |
| 73.176      | <i>Oligia fasciuncula</i>      | MIDDLE-BARRED MINOR   | 72             | 190                | 08 May          | 16 Aug        |
| 73.178      | <i>Leucochlaena oditis</i>     | BEAUTIFUL GOTHIC      | 30             | 43                 | 09 Sep          | 22 Oct        |
| 73.179      | <i>Tiliacea citrigo</i>        | ORANGE SALLOW         | 3              | 5                  | 01 Sep          | 30 Sep        |
| 73.180      | <i>Tiliacea aurago</i>         | BARRED SALLOW         | 147            | 315                | 28 Aug          | 08 Nov        |
| 73.181      | <i>Xanthia togata</i>          | PINK-BARRED SALLOW    | 79             | 98                 | 29 Aug          | 07 Nov        |
| 73.182      | <i>Cirrhia icteritia</i>       | SALLOW                | 152            | 267                | 28 Aug          | 29 Oct        |
| 73.183      | <i>Cirrhia gilvago</i>         | DUSKY-LEMON SALLOW    | 3              | 3                  | 27 Sep          | 11 Oct        |
| 73.184      | <i>Cirrhia ocellaris</i>       | PALE-LEMON SALLOW     | 5              | 5                  | 24 Sep          | 15 Oct        |
| 73.186      | <i>Agrochola lychnidis</i>     | BEADED CHESTNUT       | 464            | 2170               | 28 Aug          | 22 Nov        |
| 73.187      | <i>Agrochola litura</i>        | BROWN-SPOT PINION     | 43             | 96                 | 28 Aug          | 21 Oct        |
| 73.188      | <i>Agrochola helvola</i>       | FLOUNCED CHESTNUT     | 13             | 14                 | 30 Sep          | 23 Oct        |
| 73.189      | <i>Agrochola lota</i>          | RED-LINE QUAKER       | 144            | 198                | 20 Sep          | 23 Nov        |
| 73.190      | <i>Agrochola macilenta</i>     | YELLOW-LINE QUAKER    | 144            | 405                | 27 Sep          | 06 Dec        |
| 73.191      | <i>Agrochola haematidea</i>    | SOUTHERN CHESTNUT     | 2              | 2                  | 30 Sep          | 21 Oct        |
| 73.192      | <i>Agrochola circellaris</i>   | BRICK                 | 72             | 108                | 12 Aug          | 22 Dec        |
| 73.193      | <i>Omphaloscelis lunosa</i>    | LUNAR UNDERWING       | 492            | 4528               | 22 Aug          | 04 Nov        |
| 73.194      | <i>Conistra vaccinii</i>       | CHESTNUT              | 243            | 590                | Unavailable     | Unavailable   |
| 73.195      | <i>Conistra ligula</i>         | DARK CHESTNUT         | 81             | 93                 | Unavailable     | Unavailable   |
| 73.197      | <i>Conistra rubiginea</i>      | DOTTED CHESTNUT       | 50             | 62                 | Unavailable     | Unavailable   |
| 73.198      | <i>Conistra erythrocephala</i> | RED-HEADED CHESTNUT   | 3              | 3                  | 31 Oct          | 22 Nov        |
| 73.200      | <i>Lithophane semibrunnea</i>  | TAWNY PINION          | 11             | 12                 | Unavailable     | Unavailable   |
| 73.201      | <i>Lithophane socia</i>        | PALE PINION           | 45             | 49                 | Unavailable     | Unavailable   |
| 73.202      | <i>Lithophane ornitopus</i>    | GREY SHOULDER-KNOT    | 56             | 66                 | Unavailable     | Unavailable   |
| 73.206      | <i>Lithophane leautieri</i>    | BLAIR'S SHOULDER-KNOT | 177            | 344                | 28 Aug          | 21 Nov        |
| 73.209      | <i>Xylena vetusta</i>          | RED SWORD-GRASS       | 13             | 13                 | Unavailable     | Unavailable   |
| 73.210      | <i>Eupsilia transversa</i>     | SATELLITE             | 86             | 108                | Unavailable     | Unavailable   |
| 73.212      | <i>Ipimorpha retusa</i>        | DOUBLE KIDNEY         | 10             | 11                 | 22 Jul          | 15 Aug        |

| <i>Code</i> | <i>Taxon</i>                 | <i>Vernacular</i>           | <i>Records</i> | <i>Individuals</i> | <i>Earliest</i> | <i>Latest</i> |
|-------------|------------------------------|-----------------------------|----------------|--------------------|-----------------|---------------|
| 73.213      | <i>Ipimorpha subtusa</i>     | <b>OLIVE</b>                | 10             | 11                 | 15 Jun          | 19 Aug        |
| 73.216      | <i>Cosmia trapezina</i>      | <b>DUN-BAR</b>              | 274            | 455                | 21 Jun          | 07 Oct        |
| 73.217      | <i>Cosmia pyralina</i>       | <b>LUNAR-SPOTTED PINION</b> | 14             | 17                 | 27 Jun          | 27 Jul        |
| 73.219      | <i>Aethmia centrigo</i>      | <b>CENTRE-BARRED SALLOW</b> | 30             | 40                 | 03 Sep          | 01 Oct        |
| 73.220      | <i>Brachylomia viminalis</i> | <b>MINOR SHOULDER-KNOT</b>  | 25             | 33                 | 08 Jun          | 22 Jul        |
| 73.221      | <i>Parastichtis suspecta</i> | <b>SUSPECTED</b>            | 28             | 39                 | 27 Jun          | 21 Aug        |
| 73.222      | <i>Apterogenum ypsilon</i>   | <b>DINGY SHEARS</b>         | 10             | 11                 | 14 Jun          | 11 Jul        |
| 73.223      | <i>Dryobota labecula</i>     | <b>OAK RUSTIC</b>           | 17             | 56                 | 28 Sep          | 23 Nov        |
| 73.224      | <i>Griposia aprilina</i>     | <b>MERVELLE DU JOUR</b>     | 109            | 198                | 28 Aug          | 16 Nov        |
| 73.225      | <i>Dryobotodes eremita</i>   | <b>BRINDLED GREEN</b>       | 64             | 105                | 28 Aug          | 16 Oct        |
| 73.227      | <i>Dryobotodes tenebrosa</i> | <b>SOMBRE BROCADE</b>       | 8              | 26                 | 22 Sep          | 03 Oct        |
| 73.229      | <i>Trigonophora flammea</i>  | <b>FLAME BROCADE</b>        | 31             | 33                 | 29 Sep          | 31 Oct        |
| 73.230      | <i>Aporophyla australis</i>  | <b>FEATHERED BRINDLE</b>    | 109            | 450                | 01 Sep          | 29 Oct        |
| 73.231      | <i>Aporophyla lutulenta</i>  | <b>DEEP-BROWN DART</b>      | 5              | 6                  | 27 Sep          | 04 Oct        |
| 73.233      | <i>Aporophyla nigra</i>      | <b>BLACK RUSTIC</b>         | 379            | 1077               | 28 Aug          | 16 Nov        |
| 73.234      | <i>Dasypolia templi</i>      | <b>BRINDLED OCHRE</b>       | 12             | 12                 | 23 Sep          | 29 Oct        |
| 73.235      | <i>Polymixis lichenea</i>    | <b>FEATHERED RANUNCULUS</b> | 280            | 1163               | 03 Aug          | 08 Nov        |
| 73.237      | <i>Polymixis flavicincta</i> | <b>LARGE RANUNCULUS</b>     | 26             | 36                 | 28 Aug          | 11 Oct        |
| 73.241      | <i>Panolis flammea</i>       | <b>PINE BEAUTY</b>          | 85             | 126                | 25 Feb          | 03 Jun        |
| 73.242      | <i>Orthosia incerta</i>      | <b>CLOUDED DRAB</b>         | 384            | 1042               | 17 Feb          | 07 Jun        |
| 73.243      | <i>Orthosia miniosa</i>      | <b>BLOSSOM UNDERWING</b>    | 6              | 8                  | 23 Mar          | 30 Apr        |
| 73.244      | <i>Orthosia cerasi</i>       | <b>COMMON QUAKER</b>        | 651            | 4124               | Unavailable     | Unavailable   |
| 73.245      | <i>Orthosia cruda</i>        | <b>SMALL QUAKER</b>         | 316            | 2466               | 20 Feb          | 31 May        |
| 73.246      | <i>Orthosia populeti</i>     | <b>LEAD-COLOURED DRAB</b>   | 1              | 1                  | 14 Mar          | 14 Mar        |
| 73.247      | <i>Orthosia gracilis</i>     | <b>POWDERED QUAKER</b>      | 191            | 273                | 15 Mar          | 01 May        |
| 73.248      | <i>Orthosia opima</i>        | <b>NORTHERN DRAB</b>        | 6              | 6                  | 02 Apr          | 29 Apr        |
| 73.249      | <i>Orthosia gothica</i>      | <b>HEBREW CHARACTER</b>     | 869            | 5596               | Unavailable     | Unavailable   |
| 73.250      | <i>Anorthoa munda</i>        | <b>TWIN-SPOTTED QUAKER</b>  | 167            | 683                | 08 Mar          | 24 Apr        |

| <i>Code</i> | <i>Taxon</i>                 | <i>Vernacular</i>                 | <i>Records</i> | <i>Individuals</i> | <i>Earliest</i> | <i>Latest</i> |
|-------------|------------------------------|-----------------------------------|----------------|--------------------|-----------------|---------------|
| 73.252      | <i>Tholera cespitis</i>      | <b>HEDGE RUSTIC</b>               | 49             | 150                | 25 Jul          | 29 Oct        |
| 73.253      | <i>Tholera decimalis</i>     | <b>FEATHERED GOTHIC</b>           | 57             | 201                | 23 Aug          | 28 Sep        |
| 73.254      | <i>Cerapteryx graminis</i>   | <b>ANTLER MOTH</b>                | 24             | 28                 | 09 Jul          | 02 Sep        |
| 73.255      | <i>Anarta trifolii</i>       | <b>NUTMEG</b>                     | 61             | 65                 | 25 Apr          | 07 Sep        |
| 73.257      | <i>Anarta myrtilli</i>       | <b>BEAUTIFUL YELLOW UNDERWING</b> | 7              | 14                 | 25 Jun          | 10 Aug        |
| 73.261      | <i>Polia nebulosa</i>        | <b>GREY ARCHES</b>                | 44             | 54                 | 21 May          | 24 Jul        |
| 73.263      | <i>Lacanobia w-latinum</i>   | <b>LIGHT BROCADE</b>              | 78             | 118                | 21 Apr          | 26 Jun        |
| 73.264      | <i>Lacanobia thalassina</i>  | <b>PALE-SHOULDERED BROCADE</b>    | 16             | 21                 | 30 Apr          | 14 Aug        |
| 73.265      | <i>Lacanobia contigua</i>    | <b>BEAUTIFUL BROCADE</b>          | 4              | 5                  | 27 May          | 12 Jul        |
| 73.266      | <i>Lacanobia suasa</i>       | <b>DOG'S TOOTH</b>                | 6              | 6                  | 29 Apr          | 16 Aug        |
| 73.267      | <i>Lacanobia oleracea</i>    | <b>BRIGHT-LINE BROWN-EYE</b>      | 659            | 1183               | 08 Apr          | 03 Oct        |
| 73.270      | <i>Melanchra persicariae</i> | <b>DOT MOTH</b>                   | 93             | 126                | 02 Jun          | 05 Aug        |
| 73.271      | <i>Ceramica pisi</i>         | <b>BROOM MOTH</b>                 | 6              | 6                  | 01 Jun          | 08 Aug        |
| 73.273      | <i>Hada plebeja</i>          | <b>SHEARS</b>                     | 47             | 133                | 21 Apr          | 04 Jul        |
| 73.274      | <i>Mamestra brassicae</i>    | <b>CABBAGE MOTH</b>               | 110            | 116                | 13 Apr          | 13 Sep        |
| 73.276      | <i>Sideridis rivularis</i>   | <b>CAMPION</b>                    | 3              | 3                  | 25 May          | 29 Jul        |
| 73.279      | <i>Hecatera bicolorata</i>   | <b>BROAD-BARRED WHITE</b>         | 9              | 10                 | 02 Jun          | 21 Jul        |
| 73.281      | <i>Hadena bicurris</i>       | <b>LYCHNIS</b>                    | 176            | 205                | 20 Apr          | 31 Oct        |
| 73.283      | <i>Hadena confusa</i>        | <b>MARbled CORONET</b>            | 2              | 2                  | 02 Jun          | 14 Jun        |
| 73.284      | <i>Hadena albimacula</i>     | <b>WHITE SPOT</b>                 | 4              | 6                  | 25 Apr          | 04 Jun        |
| 73.286      | <i>Hadena perplexa</i>       | <b>TAWNY SHEARS</b>               | 74             | 97                 | 19 Apr          | 14 Sep        |
| 73.288      | <i>Mythimna turca</i>        | <b>DOUBLE LINE</b>                | 1              | 1                  | 16 Jun          | 16 Jun        |
| 73.289      | <i>Mythimna pudorina</i>     | <b>STRIPED WAINSCOT</b>           | 10             | 20                 | 25 Jun          | 27 Jul        |
| 73.290      | <i>Mythimna conigera</i>     | <b>BROWN-LINE BRIGHT-EYE</b>      | 52             | 96                 | 04 Jun          | 18 Aug        |
| 73.291      | <i>Mythimna favicolor</i>    | <b>MATHEW'S WAINSCOT</b>          | 1              | 1                  | 03 Sep          | 03 Sep        |
| 73.291      | <i>Mythimna pallens</i>      | <b>COMMON WAINSCOT</b>            | 563            | 1291               | 30 Apr          | 07 Oct        |
| 73.293      | <i>Mythimna impura</i>       | <b>SMOKY WAINSCOT</b>             | 376            | 1119               | 17 May          | 20 Oct        |
| 73.294      | <i>Mythimna straminea</i>    | <b>SOUTHERN WAINSCOT</b>          | 32             | 36                 | 06 Jun          | 23 Sep        |

| <b>Code</b> | <b>Taxon</b>                  | <b>Vernacular</b>                      | <b>Records</b> | <b>Individuals</b> | <b>Earliest</b> | <b>Latest</b> |
|-------------|-------------------------------|--|----------------|--------------------|-----------------|---------------|
| 73.295      | <i>Mythimna vitellina</i>     | <b>DELICATE</b>                        | 111            | 183                | 11 May          | 10 Nov        |
| 73.296      | <i>Mythimna unipuncta</i>     | <b>WHITE-SPECK</b>                     | 11             | 12                 | 29 Sep          | 04 Nov        |
| 73.297      | <i>Mythimna albipuncta</i>    | <b>WHITE-POINT</b>                     | 488            | 826                | 23 Apr          | 07 Nov        |
| 73.298      | <i>Mythimna ferrago</i>       | <b>CLAY</b>                            | 302            | 566                | 08 Jun          | 09 Sep        |
| 73.300      | <i>Mythimna l-album</i>       | <b>L-ALBUM WAINSCOT</b>                | 253            | 383                | 29 May          | 08 Nov        |
| 73.301      | <i>Leucania comma</i>         | <b>SHOULDER-STRIPED WAINSCOT</b>       | 136            | 229                | 16 May          | 12 Aug        |
| 73.302      | <i>Leucania obsoleta</i>      | <b>OBSCUR E WAINSCOT</b>               | 20             | 22                 | 29 Apr          | 16 Jul        |
| 73.304      | <i>Leucania loreyi</i>        | <b>COSMOPOLITAN</b>                    | 4              | 5                  | 01 Oct          | 30 Oct        |
| 73.307      | <i>Peridroma saucia</i>       | <b>PEARLY UNDERWING</b>                | 75             | 113                | 27 May          | 26 Dec        |
| 73.314      | <i>Euxoa nigricans</i>        | <b>GARDEN DART</b>                     | 6              | 6                  | 19 Jun          | 16 Sep        |
| 73.316      | <i>Agrotis cinerea</i>        | <b>LIGHT FEATHERED RUSTIC</b>          | 21             | 121                | 21 Apr          | 03 Jun        |
| 73.317      | <i>Agrotis exclamationis</i>  | <b>HEART AND DART</b>                  | 1260           | 13698              | 06 Apr          | 23 Sep        |
| 73.319      | <i>Agrotis segetum</i>        | <b>TURNIP MOTH</b>                     | 312            | 438                | 03 Apr          | 03 Dec        |
| 73.320      | <i>Agrotis clav is</i>        | <b>HEART AND CLUB</b>                  | 439            | 1498               | 29 Apr          | 29 Aug        |
| 73.322      | <i>Agrotis vestigialis</i>    | <b>ARCHER'S DART</b>                   | 6              | 7                  | 01 Aug          | 09 Sep        |
| 73.324      | <i>Agrotis trux</i>           | <b>CRESCENT DART</b>                   | 60             | 84                 | 11 Jun          | 01 Sep        |
| 73.325      | <i>Agrotis puta</i>           | <b>SHUTTLE-SHAPED DART</b>             | 1103           | 3666               | 26 Mar          | 22 Dec        |
| 73.327      | <i>Agrotis ipsilon</i>        | <b>DARK SWORD-GRASS</b>                | 376            | 671                | 07 Feb          | 03 Dec        |
| 73.328      | <i>Axy lia putris</i>         | <b>FLAME</b>                           | 409            | 962                | 10 May          | 03 Sep        |
| 73.329      | <i>Ochropleura plecta</i>     | <b>FLAME SHOULDER</b>                  | 822            | 1766               | 08 Apr          | 08 Nov        |
| 73.332      | <i>Diarsia brunnea</i>        | <b>PURPLE CLAY</b>                     | 52             | 61                 | 21 May          | 22 Jul        |
| 73.333      | <i>Diarsia mendica</i>        | <b>INGRAILED CLAY</b>                  | 279            | 818                | 13 May          | 15 Aug        |
| 73.334      | <i>Diarsia rubi</i>           | <b>SMALL SQUARE-SPOT</b>               | 50             | 82                 | 18 May          | 30 Sep        |
| 73.336      | <i>Cerastis rubricosa</i>     | <b>RED CHESTNUT</b>                    | 89             | 141                | 23 Feb          | 17 May        |
| 73.338      | <i>Lycophotia porphyrea</i>   | <b>TRUE LOVER'S KNOT</b>               | 91             | 196                | 27 May          | 19 Aug        |
| 73.341      | <i>Standfussiana lucernea</i> | <b>NORTHERN RUSTIC</b>                 | 1              | 1                  | 03 Jun          | 03 Jun        |
| 73.342      | <i>Noctua pronuba</i>         | <b>LARGE YELLOW UNDERWING</b>          | 1603           | 10452              | 03 Apr          | 03 Dec        |
| 73.343      | <i>Noctua fimbriata</i>       | <b>BROAD-BORDERED YELLOW UNDERWING</b> | 292            | 515                | 25 Jun          | 04 Oct        |

| <i>Code</i> | <i>Taxon</i>                 | <i>Vernacular</i>                      | <i>Records</i> | <i>Individuals</i> | <i>Earliest</i> | <i>Latest</i> |
|-------------|------------------------------|--|----------------|--------------------|-----------------|---------------|
| 73.345      | <i>Noctua comes</i>          | LESSER YELLOW UNDERWING                | 626            | 1507               | 02 Jun          | 25 Nov        |
| 73.346      | <i>Noctua interjecta</i>     | LEAST YELLOW UNDERWING                 | 53             | 71                 | 02 Jul          | 26 Sep        |
| 73.347      | <i>Noctua janthina</i>       | LANGMAID'S YELLOW UNDERWING            | 6              | 6                  | 13 Jul          | 02 Aug        |
| 73.348      | <i>Noctua janthe</i>         | LESSER BROAD-BORDERED YELLOW UNDERWING | 582            | 2397               | 24 Jun          | 30 Sep        |
| 73.352      | <i>Anaplectoides prasina</i> | GREEN ARCHES                           | 21             | 27                 | 29 May          | 09 Jul        |
| 73.353      | <i>Xestia baja</i>           | DOTTED CLAY                            | 1              | 1                  | 29 Aug          | 29 Aug        |
| 73.355      | <i>Xestia castanea</i>       | NEGLECTED RUSTIC                       | 4              | 13                 | 25 Jul          | 08 Oct        |
| 73.356      | <i>Xestia agathina</i>       | HEATH RUSTIC                           | 18             | 100                | 02 Sep          | 02 Oct        |
| 73.357      | <i>Xestia xanthographa</i>   | SQUARE-SPOT RUSTIC                     | 642            | 3157               | 14 Jun          | 29 Oct        |
| 73.358      | <i>Xestia sexstrigata</i>    | SIX-STRIPED RUSTIC                     | 121            | 310                | 11 Jul          | 30 Sep        |
| 73.359      | <i>Xestia c-nigrum</i>       | SETACEOUS HEBREW CHARACTER             | 1230           | 6630               | 22 Apr          | 18 Nov        |
| 73.361      | <i>Xestia triangulum</i>     | DOUBLE SQUARE-SPOT                     | 245            | 553                | 17 May          | 07 Aug        |
| 73.365      | <i>Eugnorisma glareosa</i>   | AUTUMNAL RUSTIC                        | 31             | 46                 | 14 Sep          | 16 Oct        |
| 73.368      | <i>Naenia typica</i>         | GOTHIC                                 | 25             | 26                 | 13 Jun          | 11 Aug        |
| 74.002      | <i>Meganola albula</i>       | KENT BLACK ARCHES                      | 99             | 141                | 14 Jun          | 16 Oct        |
| 74.003      | <i>Nola cucullatella</i>     | SHORT-CLOAKED MOTH                     | 41             | 46                 | 13 Jun          | 27 Jul        |
| 74.004      | <i>Nola confusalis</i>       | LEAST BLACK ARCHES                     | 85             | 163                | 08 Apr          | 02 Aug        |
| 74.007      | <i>Bena bicolorana</i>       | SCARCE SILVER-LINES                    | 12             | 12                 | 27 Jun          | 31 Jul        |
| 74.008      | <i>Pseudoips prasinana</i>   | GREEN SILVER-LINES                     | 53             | 60                 | 30 Apr          | 27 Jul        |
| 74.009      | <i>Nycteola revayana</i>     | OAK NYCTEOLINE                         | 49             | 52                 | 23 Feb          | 03 Nov        |
| 74.011      | <i>Earias clorana</i>        | CREAM-BORDERED GREEN PEA               | 31             | 35                 | 17 May          | 11 Aug        |
| 74.012      | <i>Earias insulana</i>       | EGYPTIAN BOLLWORM                      | 1              | 1                  | 08 Oct          | 08 Oct        |

## 2011 Significant Resident and Migrant Species Report

Unless stated otherwise, all records are adult moths observed at light traps. Records with vague dates, undetermined records and critical species where there is doubt are excluded (although 10km square is reported). Also excluded are species where the number of recorded 10km squares >10 and the number of records per species is >25. Sites are removed from confidential species. Where no quantity is given, a single moth is assumed. All individual counts are minimum counts.

3.004 *Phymatopus hecta* (Linnaeus, 1758) **GOLD SWIFT** Local

Recorded in: SU00. West Moors, Hatchard's Copse (SU0703); 02 Jul (D J Evans).

52.014 *Bembecia ichneumoniformis* ([Denis & Schiffermüller], 1775) **SIX-BELTED CLEARWING** Nb

Recorded in: SY39; SY49. SY39/3593 Charmouth (SY3593); 2 on 02 Jul (M S Parsons). SY49/4491 Eype Mouth (SY4491); field, 30 Jun (M S Parsons).

54.002 *Adscita statices* (Linnaeus, 1758) **FORESTER** Local

Recorded in: ST60; ST71. ST60/6100 Lankham Bottom (ST6100); 4 on 11 Jun (M S Parsons). ST71/7511 Deadmoor Common (ST7511); field, 44 on 09 Jun; field, 30 on 14 May (M S Parsons).

54.003 *Adscita geryon* (Hübner, [1813]) **CISTUS FORESTER** Nb

Recorded in: SY68. SY68/6688 Hog Hill (SY6688); field, 23 Jun (M S Parsons).

54.009 *Zygaena loniceræ* (Scheven, 1777) **NARROW-BORDERED FIVE-SPOT BURNET**

Recorded in: ST50; ST61; ST81; ST82; ST91; SY89. ST50/5107 Bracketts Coppice (ST5107); field, 11 Jun (R Smith). ST61/6610 Ryewater Farm (ST6610); field, 15 Jun (R Smith). ST81/8817 Fontmell Down (ST8817); field, 11 Jun; field, 34 on 17 Jun; field, 41 on 24 Jun; field, 14 on 03 Jul (L de Whalley). ST81/8818 Clubmen's Down (ST8818); field, 55 on 02 Jun; field, 45 on 14 Jun; field, 20 on 21 Jun (W G Shreeves). ST82/8222 Duncliffe Wood (ST8222); field, 50 on 23 Jun (W G Shreeves). ST91/9019 Melbury Down and Wood (ST9019); field, 5 on 27 Jun (L de Whalley). SY89/8190 Oakers Wood (SY8190); field, 26 Jun (I C Cross).

54.010 *Zygaena trifolii* (Esper, 1783) **FIVE-SPOT BURNET** Local

Recorded in: ST71; ST81; ST91; SU01; SY58; SY66; SY79. ST71/7411 Rooksmoor (ST7411); field, 4 on 07 Jun (R Smith). ST71/7511 Deadmoor Common (ST7511); field, 2 on 09 Jun (M S Parsons). ST81/8716 Fontmell Magna (ST8716); field, 7 on 20 Jun; field, 5 on 24 Jun (J Westgate). ST81/8817 Fontmell Down (ST8817); field, 01 Jun, leg. N Gibson (N Gibson, S Oliver, S Masters). ST91/9019 Melbury Down and Wood (ST9019); field, 9 on 12 Jun; field, 56 on 17 Jun; field, 8 on 23 Jul (J Westgate). SU01/0510 Sandy's Hill (SU0510); field, 23 Jun (A Rosenthal). SY58/5188 Cogden Beach (SY5188); field, 08 Jun (J A Newbould). SY66/6869 Isle of Portland (SY6869); field, 31 Jul, leg. E Levy (E Levy, D Levy). SY79/7392 Puddletown Forest (SY7392); field, 16 Jul, leg. E Levy; field, 22 Jul, leg. E Levy; field, 23 Jul, leg. E Levy (E Levy, D Levy). SY79/7695 Puddletown (SY7695); 29 Jun (H G Wood Homer).

66.005 *Eriogaster lanestræ* (Linnaeus, 1758) **SMALL EGGAR** Nb

Recorded in: ST71; ST80; ST81; ST91; SU01; SY49; SY58; SY59; SY67; SY68; SY79. ST71/7411 Rooksmoor (ST7411); field, larval web on 25 May (R Smith). ST80/8704 Blandford St Mary (ST8704); field, larval web on 12 May, leg. M S Parsons (M S Parsons, Z Randle). ST80/8908 Blandford Forum (ST8908); field, larval web on 18 May (M S Parsons). ST81/8812 Grammars Hill (ST8812); field, 3 larval web on 12 May, leg. M S Parsons (M S Parsons, Z Randle). ST91/9814 Cashmoor Down (ST9814); field, 50 larval web on 13 May; field, 50 larval web on 21 May (A Bryant). SY49/MT 0002 Bothenhampton (SY4892); field, larval web on 12 May; field, larval web on 23 May (M S Parsons). SY58/5088 Cogden Beach (SY5088); field, 50 larval on 14 Apr (J A Newbould). SY58/5386 West Bexington (SY5386); field, 100 larval on 11 May (J A Newbould). SY58/5685 Abbotsbury (SY5685); field, larval web on 23 May (M S Parsons). SY58/5984 Elworth (SY5985); field, larval web on 23 May (M S Parsons). SY58/MT 0001 Puncknowle (SY5386); 15 Mar; 23 Mar (R Eden). SY59/5192 Vinney Cross (SY5192); field, larval web on 18 May (M S Parsons). SY59/5493 Eggardon Hill (SY5493); field, larval web on 13 May (M S Parsons). SY59/5891 Kingston Russell (SY5891); field, larval web on 06 Jun (M S Parsons). SY67/6676 Ferry Bridge (SY6676); field, larval on 13 May (Unknown). SY67/MT 0001 Weymouth (SY6679); female on 16 Mar; male on 16 Mar (P H Sterling). SY68/MT 0002 Chickerell (SY6580); 21 Mar; 27 Mar (C Pinder). SY79/7695 Puddletown (SY7695); 25 Mar (H G Wood Homer). West Woodyates (SU0119); field, 50 larval web on 03 May (A Bryant).

66.006 *Lasiocampa trifolii* ([Denis & Schiffermüller], 1775) **GRASS EGGAR** Na

Recorded in: SZ08. SZ08/0385 Studland (SZ0385); field, 2 larval on 18 Jun (J Oughton).

66.009 *Dendrolimus pini* (Linnaeus, 1758) **PINE-TREE LAPPET** Vagrant/Accidental

Recorded in: SY66. SY66/6768 Isle of Portland (SY6768); 22 Aug, **New VC Record** (B F Skinner).



- 69.004 *Agrius convolvuli* (Linnaeus, 1758) **CONVOLVULUS HAWK-MOTH** Migrant  
Recorded in: SY39; SY49; SY58; SY66; SY68; SY78; SY79; SY88; SY97; SZ07. SY39/MT 0001 Charmouth (SY3693); 28 Sep; 11 Oct (G Sell). SY49/MT 0002 Bothenhampton (SY4892); 25 Sep (M S Parsons). SY58/5387 West Bexington (SY5387); 2 on 28 Sep; 30 Sep; 3 on 01 Oct; 25 Sep; 05 Oct (D Foot). SY58/5685 Knolls (SY5685); 30 Sep (M J Deans). SY58/MT 0001 Puncknowle (SY5386); 2 on 03 Sep; 04 Sep; 28 Sep; 29 Sep; 30 Sep; 01 Oct; 02 Oct; 03 Oct; 2 on 14 Oct; 17 Oct; 13 Nov; 14 Nov (R Eden). SY58/xxxx Abbotsbury (SY58); 5 on 01 Oct (M J Deans). SY66/MT 0001 Portland (SY6868); 25 Aug; 27 Aug; 27 Sep (M Cade). SY68/6785 Lower Bincombe (SY6785); field, 07 Aug (N J Howell). SY78/MT 0006 Weymouth (SY7083); 01 Sep (D Emery). SY79/7695 Puddletown (SY7695); 01 Sep; 02 Sep; 07 Sep; 23 Sep; 26 Sep; 27 Sep (H G Wood Homer). SY88/MT 0010 East Lulworth (SY8582); field, 12 Oct (L J Hill). SY97/9677 Worth Matravers (SY9677); 29 Sep (D C G Brown). SZ07/0377 Durlston Country Park (SZ0377); 2 on 06 Aug; 29 Sep, leg. L de Whalley; 2 on 29 Sep; 2 on 28 Sep; 29 Sep; 04 Oct, leg. B F Skinner (S Breeze).
- 69.005 *Acherontia atropos* (Linnaeus, 1758) **DEATH'S-HEAD HAWK-MOTH** Migrant  
Recorded in: SY68; SY98. SY68/MT 0003 Weymouth (SY6784); 11 Nov (P Harris). SY98/MT 0002 Arne (SY9787); field, 04 Oct (Unknown).
- 69.008 *Hemaris tityus* (Linnaeus, 1758) **NARROW-BORDERED BEE HAWK-MOTH** Na  
Recorded in: ST60; ST61; SY59; SY68. ST60/6601 Cerne Abbas (ST6601); field, larval on 28 Jun (M S Parsons). ST61/6610 Ryewater Farm (ST6610); field, 6 larval on 09 Jun (M S Parsons). SY59/5497 Powerstock Common (SY5497); field, 5 on 13 May; field, larval on 11 Jul; field, 13 May (M S Parsons). SY68/6688 Hog Hill (SY6688); field, 10 larval on 23 Jun (M S Parsons).
- 69.009 *Hemaris fuciformis* (Linnaeus, 1758) **BROAD-BORDERED BEE HAWK-MOTH** Nb  
Recorded in: SY59; SY79; SY89. SY59/5397 Powerstock Common (SY5397); field, 22 Apr (C Raper). SY79/7392 Puddletown Forest (SY7392); field, 26 Apr, leg. E Levy (E Levy, D Levy). SY89/8190 Oakers Wood (SY8190); field, 26 Jun (I C Cross). SY89/8193 Briantspuddle (SY8193); field, 10 May; field, 11 May (I C Cross).
- 69.011 *Daphnis nerii* (Linnaeus, 1758) **OLEANDER HAWK-MOTH** Migrant  
Recorded in: SY58. SY58/MT 0001 Puncknowle (SY5386); 20 Sep (R Eden).
- 69.014 *Hyles gallii* (Rottemburg, 1775) **BEDSTRAW HAWK-MOTH** Migrant  
Recorded in: SY66. SY66/MT 0001 Portland (SY6868); 20 Jul; 21 Jul (M Cade).
- 69.015 *Hyles livornica* (Esper, [1804]) **STRIPED HAWK-MOTH** Migrant  
Recorded in: SY68. SY68/6680 Southill (SY6680); 16 Jul, leg. P H Sterling (P H Sterling, D Foot).
- 69.018 *Hippotion celerio* (Linnaeus, 1758) **SILVER-STRIPED HAWK-MOTH** Migrant  
Recorded in: SU11; SY39; SZ09. SU11/MT 0001 Alderholt (SU1112); 14 Nov (T Morris). SY39/MT 0001 Charmouth (SY3693); 02 Oct (G Sell). SZ09/0190 Poole (SZ0190); field, 06 Dec (D Couzens).
- 70.002 *Idaea muricata* (Hufnagel, 1767) **PURPLE-BORDERED GOLD** Nb  
Recorded in: SU00. SU00/0604 Holt Heath (SU0604); field, 4 on 05 Jul (M S Parsons).
- 70.003 *Idaea ochrata* (Scopoli, 1763) **BRIGHT WAVE** RDB1  
Recorded in: SY66. SY66/MT 0001 Portland (SY6868); 05 Jul (M Cade).
- 70.015 *Idaea emarginata* (Linnaeus, 1758) **SMALL SCALLOP** Local  
Recorded in: ST61; SU10; SU11; SY98; SY99; SZ09; SZ19. Ridge, Sunnyside (SY9386); 28 Jul (R Carpenter). SU11/MT 0001 Alderholt (SU1112); 19 Jul (T Morris). SY98/MT 0009 Corfe Castle (SY9881); 27 Jul (D Gould). SY99/9893 Upton Heath (SY9893); 09 Aug (D J Evans). SZ09/0999 Parley Common (SZ0999); 25 Jul (J C Winterbottom). Yetminster, Shearstones (ST6010); 26 Jul; 28 Jul (C R Burningham).
- 70.017 *Idaea degeneraria* (Hübner, [1799]) **PORTLAND RIBBON WAVE** RDB3  
Recorded in: SY49; SY58; SY67; SY68; SZ07. SY49/MT 0002 Bothenhampton (SY4892); 30 Sep (M S Parsons). SY58/xxxx Abbotsbury (SY58); 01 Oct (M J Deans). SY67/6970 Isle of Portland (SY6970); 5 on 03 Jun (M J Hammond). SY67/6972 Isle of Portland (SY6972); 02 Jul, leg. N Spring (N Spring, D Kingman). SY67/MT 0006 Weymouth (SY6778); 09 May (J Oughton). SY68/MT 0003 Weymouth (SY6784); 16 Aug; 28 Sep (P Harris). SZ07/0377 Durlston Country Park (SZ0377); 30 Aug; 31 Aug (S Breeze).

- 70.025 *Scopula immutata* (Linnaeus, 1758) **LESSER CREAM WAVE** Local  
Recorded in: SU00; SU10; SY98; SZ19. SY98/9089 Cold Harbour (SY9089); 20 Jun (M S Parsons). West Moors, Hatchard's Copse (SU0703); 2 on 20 Aug (D J Evans).
- 70.028 *Scopula emutaria* (Hübner, [1809]) **ROSY WAVE** Nb  
Recorded in: SY66. SY66/MT 0001 Portland (SY6868); 05 Aug (M Cade).
- 70.030 *Cyclophora pendularia* (Clerck, 1759) **DINGY MOCHA** RDB3  
Recorded in: ST71; SU00; SY78; SY88; SY89; SY98; SZ08; SZ09; SZ19. ST71/7310 Alners Gorse (ST7310); 3 on 30 Apr (N Spring). SU00/0503 White Sheet Plantation (SU0503); field, 2 larval on 24 Aug (M S Parsons). SU00/0602 Uddens Plantation (SU0602); field, larval on 24 Aug (M S Parsons). SY78/7987 Tadnoll (SY7987); field, larval on 31 Aug; 04 May (M S Parsons). SY88/8086 Winfrith Heath (SY8086); field, larval on 19 Aug; field, 2 larval on 31 Aug (M S Parsons). SY88/8387 East Burton (SY8387); 11 Jul (M Greenland). SY89/8191 Oakers Wood (SY8191); field, 3 larval on 25 Aug; field, 2 larval on 25 Aug (M S Parsons). SY89/8893 Bloxworth Heath (SY8893); 11 Jul (M S Parsons). SY98/9089 Cold Harbour (SY9089); field, 3 larval on 23 Aug (M S Parsons). SZ08/0383 Studland (SZ0383); 01 Aug (D C G Brown). SZ09/0899 Parley Common (SZ0899); field, larval on 24 Aug (M S Parsons).
- 70.031 *Cyclophora annularia* (Fabricius, 1775) **MOCHA** Nb  
Recorded in: ST61; ST71; SY39; SY58; SY59; SZ09; SZ19. Merley, Sopwith Crescent (SZ0298); 16 Aug (R W Steedman). ST71/7310 Alners Gorse (ST7310); 13 Aug (N Spring). SY39/MT 0001 Charmouth (SY3693); 29 Jul (G Sell). SY58/MT 0001 Puncknowle (SY5386); 27 Jul (R Eden). SY59/5396 Powerstock Common (SY5396); 2 on 23 Apr (D Foot). Yetminster, Shearstones (ST6010); 27 Apr; 30 Apr; 2 on 14 Jul; 20 Jul (C R Burningham).
- 70.033 *Cyclophora puppillaria* (Hübner, [1799]) **BLAIR'S MOCHA** Migrant  
Recorded in: SY58; SZ08; SZ19. SY58/5387 West Bexington (SY5387); 29 Sep (D Foot). SZ08/0383 Studland (SZ0383); 01 Oct (D C G Brown).
- 70.043 *Scotopteryx bipunctaria* ([Denis & Schiffermüller], 1775) **CHALK CARPET** Nb  
Recorded in: ST81; ST90; SY39; SY48; SY49; SY67; SY88. ST81/8719 Compton Down (ST8719); field, 10 on 01 Aug (W G Shreeves). ST81/8817 Fontmell Down (ST8817); field, 12 Jul; field, 6 on 26 Jul; field, 2 on 31 Jul; field, 5 on 08 Aug (W G Shreeves). ST81/8818 Clubmen's Down (ST8818); field, 4 on 15 Aug (L de Whalley). ST90/9602 Badbury Rings (ST9602); field, 01 Jul (G Freeman). SY39/004/02 West Dorset Coast (SMU 2) (SY3391); 3 on 14 Aug (P Parr). SY39/3492 Lyme Regis (SY3492); 5 on 12 Aug, leg. P H Sterling (P H Sterling, M J Sterling, D Foot). SY39/3593 Charmouth (SY3593); field, 4 on 02 Jul (M S Parsons). SY39/3693 Charmouth (SY3693); field, 04 Jul (C Iles). SY39/MT 0001 Charmouth (SY3693); 12 Jul; 14 Jul; 17 Jul; 24 Jul; 25 Jul; 28 Jul; 2 on 29 Jul; 30 Jul; 31 Jul; 3 on 01 Aug; 02 Aug; 04 Aug; 26 Aug; 02 Sep; 09 Sep (G Sell). SY48/4988 Burton Bradstock (SY4988); field, 3 on 01 Jul (M S Parsons). SY49/4491 Eype Mouth (SY4491); field, 8 on 25 Jul (M S Parsons). SY67/002/66 Isle of Portland (SMU 66) (SY6872); field, 27 Jul; 27 Jul (vm53). SY67/6770 Isle of Portland (SY6770); field, 26 Aug (J Oughton). SY67/6870 Isle of Portland (SY6870); 09 Aug (D Saunders). SY67/6872 Isle of Portland (SY6872); field, 15 Jul (B Bewsher). SY88/8280 West Lulworth (SY8280); field, 30 Aug (D C G Brown). SY88/MT 0010 East Lulworth (SY8582); 10 Sep (L J Hill).
- 70.052 *Xanthorhoe ferrugata* (Clerck, 1759) **DARK-BARRED TWIN-SPOT CARPET**  
Recorded in: SY67; SY88; SZ19; SZ29. SY67/MT 0002 Weymouth (SY6676); 28 Jun; 02 Jul (D Foot). SY88/MT 0001 East Lulworth (SY8583); 12 Jul (L J Hill).
- 70.056 *Catarhoe cuculata* (Hufnagel, 1767) **ROYAL MANTLE** Local  
Recorded in: SY49. SY49/MT 0002 Bothenhampton (SY4892); 27 Jul (M S Parsons).
- 70.057 *Catarhoe rubidata* ([Denis & Schiffermüller], 1775) **RUDDY CARPET** Nb  
Recorded in: SY67. SY67/6970 Isle of Portland (SY6970); 03 Jun (M J Hammond).
- 70.058 *Costaconvexa polygrammata* (Borkhausen, 1794) **MANY-LINED** Migrant  
Recorded in: SY58. SY58/5387 West Bexington (SY5387); 29 Sep (D Foot).
- 70.062 *Epirrhoe rivata* (Hübner, [1813]) **WOOD CARPET** Local  
Recorded in: ST61; SY79; SY98. SY79/7293 Yellowham Farm (SY7293); lit window, 04 Aug (G Balcikonis). SY79/7695 Puddletown (SY7695); 25 May; 28 on 21 Jun; 5 on 30 Jun; 3 on 03 Jul (H G Wood Homer). SY79/MT 0003 Tincton (SY7892); 12 Aug; 22 Aug (R Cottle). SY98/MT 0009 Corfe Castle (SY9881); 26 Jun; 28 Jun; 02 Jul; 19 Jul (D Gould). Yetminster, Shearstones (ST6010); 11 Jul; 27 Jul; 28 Jul (C R Burningham).
- 70.063 *Epirrhoe galiata* ([Denis & Schiffermüller], 1775) **GALIUM CARPET** Local  
Recorded in: ST40; SY58; SY67; SY68; SZ07. Preston, Weymouth (SY6983); field, 08 Aug (M Jones). ST40/MT 0001

- Beaminster (ST4701); 02 Jun; 10 Aug (S Philp). SY58/5684 Abbotsbury (SY5684); outside light, 16 May (C Rogers). SY58/MT 0001 Puncknowle (SY5386); 02 Sep; 03 Sep (R Eden). SY67/6871 Isle of Portland (SY6871); 02 Jul, leg. R R Cook (R R Cook, A Page). SY67/6970 Isle of Portland (SY6970); 3 on 03 Jun (M J Hammond). SY67/MT 0005 Portland (SY6871); 30 Jul; 05 Aug (J Williamson). SZ07/0377 Durlston Country Park (SZ0377); 01 Aug; 2 on 02 Aug; 02 Aug (D C G Brown). SZ07/MT 0002 Swanage (SZ0278); 03 Jul (P England).
- 70.064 *Euphyia biangulata* (Haworth, 1809) **CLOAKED CARPET** Nb  
Recorded in: SU00; SU10; SU11; SY58; SY67; SY79; SY88; SY89; SZ19. SU11/MT 0001 Alderholt (SU1112); 14 Jul (T Morris). SY58/MT 0001 Puncknowle (SY5386); 03 Jul (R Eden). SY67/6970 Isle of Portland (SY6970); 19 Aug, leg. B Bewsher (B Bewsher, B F Skinner). SY79/7491 Boswell's Plantation (SY7491); 07 Jul (H G Wood Homer). SY79/7695 Puddletown (SY7695); 03 Jun; 25 Jul (H G Wood Homer). SY88/8582 Lulworth Park and Lake (SY8582); 11 Jul, leg. S Phelps (S Phelps, W T Franklin, L Butt, L Clarke). SY89/8893 Bloxworth Heath (SY8893); 27 Jun; 3 on 11 Jul (M S Parsons). West Moors, Hatchard's Copse (SU0703); 02 Jul (D J Evans).
- 70.068 *Mesoleuca albicillata* (Linnaeus, 1758) **BEAUTIFUL CARPET**  
Recorded in: SY88; SZ19. SY88/MT 0001 East Lulworth (SY8583); 21 Jun; 12 Jul (L J Hill).
- 70.069 *Pelurga comitata* (Linnaeus, 1758) **DARK SPINACH**  
Recorded in: SY79. SY79/MT 0003 Tinctleton (SY7892); 26 Jul (R Cottle).
- 70.092 *Eulithis mellinata* (Fabricius, 1787) **SPINACH**  
Recorded in: SY67; SY79; SY98; SZ09; SZ19. SY67/MT 0006 Weymouth (SY6778); 02 Jun (J Oughton). SY79/7293 Yellowham Farm (SY7293); 21 May (G Balcikonis). SY98/MT 0004 Wareham Town (SY9287); 20 Jun (B D D Young). SZ09/MT 0006 Poole (SZ0291); 02 Jun (V Giavarini).
- 70.099 *Colostygia olivata* ([Denis & Schiffermüller], 1775) **BEECH-GREEN CARPET** Local  
Recorded in: SY67. SY67/6970 Isle of Portland (SY6970); field, 25 on 12 Aug (M Cade).
- 70.104 *Lampropteryx otregiata* (Metcalf, 1917) **DEVON CARPET** Nb  
Recorded in: SY59. SY59/5599 Lower Kingcombe (SY5599); 20 May, leg. N Spring (N Spring, G Dennis).
- 70.105 *Operophtera fagata* (Scharfenberg, 1805) **NORTHERN WINTER MOTH**  
Recorded in: SU11; SY88; SY89. SU11/MT 0001 Alderholt (SU1112); 07 Nov; 21 Nov (T Morris). SY88/MT 0010 East Lulworth (SY8582); 25 Nov (L J Hill). SY89/8091 Bryants Puddle Heath (SY8091); 21 Nov (V Giavarini).
- 70.107 *Epirrita dilutata* ([Denis & Schiffermüller], 1775) **NOVEMBER MOTH**  
Recorded in: SY88; SZ29. SY88/MT 0010 East Lulworth (SY8582); 14 Oct, gen. det. 15 Oct, gen. det. 3 on 19 Oct, gen. det. 2 on 24 Oct, gen. det. 3 on 25 Oct, gen. det. 6 on 30 Oct, gen. det. 14 on 02 Nov, gen. det. 2 on 09 Sep, gen. det. 10 Sep, gen. det. 24 Oct, gen. det. 3 on 30 Oct, gen. det. (L J Hill).
- 70.117 *Minoa murinata* (Scopoli, 1763) **DRAB LOOPER** Nb  
Recorded in: ST91; SY88. ST91/9015 Stubbampton Bottom (ST9015); field, 5 on 27 Apr; field, 9 on 12 May, leg. M S Parsons; field, 6 on 18 May (M S Parsons). SY88/8684 Coombe Heath (SY8684); field, 19 May (L Phillips).
- 70.124 *Pareulype berberata* ([Denis & Schiffermüller], 1775) **BARBERRY CARPET** RDB1  
Recorded in: ST80. Field, 3 larval on 30 Aug; field, 2 larval on 30 Aug (M S Parsons).
- 70.129 *Anticollix sparsata* (Treitschke, 1828) **DENTATED PUG** Na  
Recorded in: SU00; SZ19. SU00/0502 Holt Heath (SU0502); field, larval on 24 Aug (M S Parsons). SU00/0602 Uddens Plantation (SU0602); field, larval on 24 Aug (M S Parsons).
- 70.130 *Odezia atrata* (Linnaeus, 1758) **CHIMNEY SWEEPER**  
Recorded in: SY98. SY98/9581 Corfe Common (SY9581); field, 2 on 07 Jun; field, 10 on 11 Jun; field, 4 on 02 Jul (R Hughes).
- 70.131 *Mesotype didymata* (Linnaeus, 1758) **TWIN-SPOT CARPET**  
Recorded in: ST70; ST73. ST70/7404 Melcombe Park (ST7404); 25 on 25 Jun (H G Wood Homer). ST73/7931 Bagmore Wood (ST7931); 20 Jul (M Plaxton).

- 70.134 *Perizoma bifaciata* (Haworth, 1809) **BARRED RIVULET** Local  
Recorded in: SY67; SZ07. SY67/MT 0005 Portland (SY6871); 30 Jul, leg. M Cade (J Williamson). SZ07/0377 Durlston Country Park (SZ0377); 01 Aug; 02 Aug; 03 Aug; 11 Jul; 27 Jul; 02 Aug; 27 Jul (D C G Brown).
- 70.137 *Perizoma albulata* ([Denis & Schiffermüller], 1775) **GRASS RIVULET** Local  
Recorded in: SU11; SY68; SY98; SY99; SZ07; SZ09. SU11/MT 0001 Alderholt (SU1112); 02 Jun (T Morris). SY68/MT 0003 Weymouth (SY6784); 04 Jun (P Harris). SY98/9187 West Mills (SY9187); field, 28 Jun; field, 09 Jul (P Orchard). SY99/9691 Holton Heath (SY9691); field, 14 Jun; field, 09 Jul (P Orchard). SZ07/0277 Durlston Country Park (SZ0277); 25 May, leg. ophrys; field, 25 May (M Coffin). SZ07/0377 Durlston Country Park (SZ0377); 11 May; field, 17 May; field, 25 May (S Breeze). SZ09/0999 Parley Common (SZ0999); 25 Jul (J C Winterbottom).
- 70.143 *Pasiphila chloerata* (Mabille, 1870) **SLOE PUG**  
Recorded in: SY58; SY68. SY58/MT 0001 Puncknowle (SY5386); 27 May; 29 May; 01 Jun; 02 Jun; 03 Jun; 06 Jun; 08 Jun; 15 Jun (R Eden). SY68/MT 0002 Chickerell (SY6580); 11 Jun; 2 on 13 Jun; 19 Jun; 4 on 25 Jun; 2 on 26 Jun; 01 Jul; 04 Jul (C Pinder).
- 70.150 *Eupithecia linariata* ([Denis & Schiffermüller], 1775) **TOADFLAX PUG**  
Recorded in: ST61; SY58; SY67. SY58/MT 0001 Puncknowle (SY5386); 27 Jul (R Eden). SY67/MT 0002 Weymouth (SY6676); 12 Jul; 20 Aug; 21 Aug (D Foot). Yetminster, Shearstones (ST6010); 28 Jul (C R Burningham).
- 70.152 *Eupithecia ultimaria* Boisduval, 1840 **CHANNEL ISLANDS PUG** Local(alien-foodplant)  
Recorded in: SY58. SY58/5684 Abbotsbury (SY5684); field, 2 on 20 Aug, leg. R F McCormick (B Bewsher). SY58/MT 0001 Puncknowle (SY5386); 30 Jul (R Eden).
- 70.166 *Eupithecia simpliciata* (Haworth, 1809) **PLAIN PUG** Local  
Recorded in: SY67; SY68; SY98; SZ29. SY67/MT 0002 Weymouth (SY6676); 21 Jul (D Foot). SY68/MT 0003 Weymouth (SY6784); 22 Jul (P Harris). SY98/MT 0009 Corfe Castle (SY9881); 26 Jul (D Gould).
- 70.169 *Eupithecia innotata* (Hufnagel, 1767) **ANGLE-BARRED PUG** Unconfirmed  
Recorded in: SU01; SY79. SU01/0212 Wimborne St Giles (SU0212); 29 Jul (J C Winterbottom). SY79/7695 Puddletown (SY7695); 28 May (H G Wood Homer).
- 70.170 *Eupithecia irriguata* (Hübner, [1813]) **MARbled PUG** Nb  
Recorded in: SY49; SY59; SY89. SY49/MT 0002 Bothenhampton (SY4892); 26 Apr (M S Parsons). SY59/5396 Powerstock Common (SY5396); 40 on 23 Apr (D Foot). SY89/8091 Bryants Puddle Heath (SY8091); 3 on 22 Apr (D Foot).
- 70.172 *Eupithecia distinctaria* Herrich-Schäffer, 1848 **THYME PUG** Nb  
Recorded in: SY67. SY67/6970 Isle of Portland (SY6970); 20 on 03 Jun; 25 on 03 Jun (M J Hammond).
- 70.186 *Eupithecia millefoliata* Rössler, 1866 **YARROW PUG** Nb  
Recorded in: SZ07. SZ07/0377 Durlston Country Park (SZ0377); 2 on 31 Jul (D C G Brown).
- 70.188 *Eupithecia succenturiata* (Linnaeus, 1758) **BORDERED PUG**  
Recorded in: SY78; SY79; SZ19. Broadmayne, Spring Gardens (SY7387); 02 Jun (P Bruce-Jones). SY79/7695 Puddletown (SY7695); 27 Jun; 21 Jul (H G Wood Homer).
- 70.195 *Chesias legatella* ([Denis & Schiffermüller], 1775) **STREAK**  
Recorded in: SY68; SY88; SY89. SY68/MT 0003 Weymouth (SY6784); 26 Oct (P Harris). SY88/MT 0001 East Lulworth (SY8583); 03 Nov (M S Parsons). SY88/MT 0010 East Lulworth (SY8582); 31 Oct; 01 Nov (L J Hill). SY89/8792 Wareham Forest (SY8792); field, 50 on 14 Oct, leg. D Kingman (D Kingman, J Kingman).
- 70.201 *Trichopteryx polycommata* ([Denis & Schiffermüller], 1775) **BARRED TOOTH-STRIPED** Na  
Recorded in: ST81; SY66; SY88. ST81/8818 Clubmen's Down (ST8818); netted, 3 on 13 Mar (D Foot). SY66/MT 0001 Portland (SY6868); 28 Mar (M Cade). SY88/MT 0010 East Lulworth (SY8582); 23 Mar; 26 Mar; 27 Mar (L J Hill).
- 70.217 *Macaria brunneata* (Thunberg, 1784) **RANNOCH LOOPER** Na  
Recorded in: ST90; SY66; SY67; SY68; SY79; SY88; SY98; SZ09. ST90/MT 0002 Spetisbury (ST9102); 05 Jun, leg. D Kingman (D Kingman, J Kingman). SY66/MT 0001 Portland (SY6868); 2 on 03 Jun; 04 Jun (M Cade). SY67/6970 Isle of Portland (SY6970); 2 on 03 Jun (M J Hammond). SY67/MT 0002 Weymouth (SY6676); 05 Jun (D Foot). SY68/MT 0001 Dorchester (SY6889); 04 Jun (J E Down). SY68/MT 0002 Chickerell (SY6580); 03 Jun (C Pinder). SY79/7695

Puddletown (SY7695); 05 Jun (H G Wood Homer). SY88/MT 0004 East Holme (SY8986); 04 Jun (J Cox). SY98/MT 0009 Corfe Castle (SY9881); 04 Jun (D Gould). SZ09/MT 0009 Poole (SZ0097); 04 Jun (J Fradgley).

70.218 *Chiasmia clathrata* (Linnaeus, 1758) **LATTICED HEATH**

Recorded in: SY67; SY78; SY99. SY67/6870 Isle of Portland (SY6870); 02 Jul; 20 Aug (D Saunders). SY67/MT 0001 Weymouth (SY6679); 09 Sep (P H Sterling). SY78/7987 Tadnoll (SY7987); field, 13 May (P Orchard). SY99/9691 Holton Heath (SY9691); field, 04 Jul (P Orchard). SY99/9893 Upton Heath (SY9893); 2 on 28 May (D J Evans). SY99/9894 Upton Heath (SY9894); 28 May (D J Evans).

70.221 *Cepphis advenaria* (Hübner, 1790) **LITTLE THORN** Nb

Recorded in: SY79; SY88; SZ29. SY79/7491 Boswell's Plantation (SY7491); 2 on 17 May (H G Wood Homer). SY79/MT 0003 Tincton (SY7892); 3 on 06 May; 4 on 09 May; 2 on 11 May; 2 on 13 May; 2 on 15 May; 25 May (R Cottle). SY88/MT 0001 East Lulworth (SY8583); 16 May; 19 May; 07 Jun; 21 Jun (L J Hill). SY88/MT 0010 East Lulworth (SY8582); 07 May; 10 May; 2 on 15 May; 2 on 16 May; 17 May; 3 on 19 May; 2 on 20 May; 22 May; 3 on 02 Jun; 03 Jun; 2 on 06 Jun (L J Hill).

70.233 *Ennomos quercinaria* (Hufnagel, 1767) **AUGUST THORN** Local

Recorded in: ST71; ST73; ST90; SU10; SY78; SY79; SZ19. ST71/7611 Plumber Farm (ST7611); 28 Aug (W T Franklin). ST73/7931 Bagmore Wood (ST7931); 30 Aug (M Plaxton). ST90/MT 0002 Spetisbury (ST9102); 26 Jul, leg. D Kingman; 29 Jul, leg. D Kingman (D Kingman, J Kingman). SY78/MT 0008 West Stafford (SY7289); 30 Jul, leg. E S Rose (E S Rose, A Rose). SY79/7695 Puddletown (SY7695); 08 Aug (H G Wood Homer). SY79/MT 0003 Tincton (SY7892); 28 Jul (R Cottle).

70.236 *Ennomos erosaria* ([Denis & Schiffmüller], 1775) **SEPTEMBER THORN**

Recorded in: ST61; ST70; ST71; SU01; SU11; SZ09; SZ19. ST70/7404 Melcombe Park (ST7404); 3 on 27 Jul; 3 on 09 Aug; 02 Sep (H G Wood Homer). ST71/7310 Alners Gorse (ST7310); 4 on 13 Aug (N Spring). SU01/0212 Wimborne St Giles (SU0212); 26 Aug (J C Winterbottom). SU11/MT 0001 Alderholt (SU1112); 26 Jun; 01 Jul; 4 on 03 Jul; 09 Jul; 11 Jul; 16 Aug; 19 Aug; 2 on 21 Aug (T Morris). SZ09/MT 0009 Poole (SZ0097); 03 Sep (J Fradgley). Yetminster, Shearstones (ST6010); 09 Aug (C R Burningham).

70.246 *Apocheima hispidaria* ([Denis & Schiffmüller], 1775) **SMALL BRINDLED BEAUTY** Local

Recorded in: ST70; ST80; SU11; SZ19. ST70/7404 Melcombe Park (ST7404); 135 on 23 Feb (H G Wood Homer). ST80/MT 0001 Winterborne Stickland (ST8305); 21 Feb; 11 Mar (L de Whalley). SU11/MT 0001 Alderholt (SU1112); 17 Feb; 24 Feb (T Morris).

70.262 *Selidosema brunnearia* (Villers, 1789) **BORDERED GREY** Na

Recorded in: SU00; SY88. SU00/0604 Holt Heath (SU0604); field, male on 24 Aug; field, 2 males on 24 Aug (M S Parsons). SY88/8280 West Lulworth (SY8280); field, 30 Aug (D C G Brown).

70.263 *Cleora cinctaria* ([Denis & Schiffmüller], 1775) **RINGED CARPET** Na

Recorded in: SU11; SY89. SU11/MT 0001 Alderholt (SU1112); 19 Apr; 28 Apr; 06 May (T Morris). SY89/8091 Bryants Puddle Heath (SY8091); 5 on 22 Apr (D Foot).

70.274 *Aethalura punctulata* ([Denis & Schiffmüller], 1775) **GREY BIRCH**

Recorded in: ST71; SU11; SY89; SY99; SZ19. ST71/7310 Alners Gorse (ST7310); 30 Apr (N Spring). SU11/MT 0001 Alderholt (SU1112); 21 Apr (T Morris). SY89/8091 Bryants Puddle Heath (SY8091); 22 Apr (D Foot). SY99/9894 Upton Heath (SY9894); 27 May; 28 May (D J Evans).

70.287 *Charissa obscurata* ([Denis & Schiffmüller], 1775) **ANNULET** Local

Recorded in: SY39; SY66; SY67; SY79; SY89; SZ07. SY39/MT 0001 Charmouth (SY3693); 21 Aug; 02 Sep; 09 Sep (G Sell). SY66/6969 Isle of Portland (SY6969); field, 06 Sep (M S Parsons). SY67/6970 Isle of Portland (SY6970); 2 on 19 Aug, leg. B Bewsher (B Bewsher, B F Skinner). SY79/MT 0003 Tincton (SY7892); 28 Jul (R Cottle). SY89/8091 Bryants Puddle Heath (SY8091); 07 Aug (D Foot). SZ07/0076 Blackers Hole (SZ0076); 30 Sep (R Cox). SZ07/0377 Durlston Country Park (SZ0377); 21 Aug (S Breeze).

70.292 *Dyscia fagaria* (Thunberg, 1784) **GREY SCALLOPED BAR** Local

Recorded in: SU11; SY88. SU11/MT 0001 Alderholt (SU1112); 03 May; 05 May (T Morris). SY88/MT 0010 East Lulworth (SY8582); 30 Apr (L J Hill).

70.306 *Chlorissa viridata* (Linnaeus, 1758) **SMALL GRASS EMERALD** Na

Recorded in: SY79. SY79/MT 0002 Tolpuddle (SY7994); 26 Jun, leg. P H Sterling (J Francis).

- 71.023 *Odontosia carmelita* (Esper, [1798]) **SCARCE PROMINENT** Local  
Recorded in: SU11; SY79; SY88; SY89; SY98; SY99; SZ19. SU11/MT 0001 Alderholt (SU1112); 08 Apr; 09 Apr; 16 Apr; 18 Apr; 19 Apr (T Morris). SY79/7491 Boswell's Plantation (SY7491); 2 on 19 Apr (H G Wood Homer). SY79/MT 0003 Tincton (SY7892); 19 Apr (R Cottle). SY88/MT 0010 East Lulworth (SY8582); 11 Apr; 14 Apr; 19 Apr; 23 Apr (L J Hill). SY89/8091 Bryants Puddle Heath (SY8091); 7 on 22 Apr (D Foot). SY98/MT 0012 Norden (SY9483); 24 Apr (J White). SY99/9894 Upton Heath (SY9894); 08 Apr (D J Evans). SY99/MT 0002 Corfe Mullen (SY9897); 21 Apr (R Lambert).
- 72.004 *Hypena rostralis* (Linnaeus, 1758) **BUTTONED SNOUT** Nb  
Recorded in: ST80; SZ19. ST80/MT 0001 Winterborne Stickland (ST8305); 30 Apr (L de Whalley).
- 72.006 *Hypena obsitalis* (Hübner, [1813]) **BLOXWORTH SNOUT** RDB3  
Recorded in: SY48; SY58; SY66; SY67; SZ08. SY48/4889 Burton Bradstock (SY4889); netted, 13 Oct (M S Parsons). SY58/5387 West Bexington (SY5387); 01 Oct (D Foot). SY66/6969 Isle of Portland (SY6969); field, 7 on 06 Sep (M S Parsons). SY67/6778 Weymouth (SY6778); field, 23 Aug (T Chapman). SY67/6972 Isle of Portland (SY6972); field, 4 larval on 12 Aug (A Rouse). SY67/MT 0002 Weymouth (SY6676); 21 Jul; 15 Sep (D Foot). SY67/MT 0006 Weymouth (SY6778); 13 Oct (J Oughton). SZ08/0288 Brownsea Island (SZ0288); field, 20 Dec (C Thain).
- 72.007 *Hypena crassalis* (Fabricius, 1787) **BEAUTIFUL SNOUT** Local  
Recorded in: ST50; SY79. ST50/5605 Melbury Park (ST5606); 14 Jul (M S Parsons). SY79/7695 Puddletown (SY7695); 26 Jul (H G Wood Homer). SY79/MT 0003 Tincton (SY7892); 2 on 26 Jun; 26 Jul (R Cottle).
- 72.009 *Leucoma salicis* (Linnaeus, 1758) **WHITE SATIN** Local  
Recorded in: SY79; SY88; SZ19. SY79/MT 0002 Tolpuddle (SY7994); 25 Jun (J Francis). SY88/8583 Lulworth Park and Lake (SY8583); field, larval on 25 May (L J Hill).
- 72.016 *Dicallomera fascelina* (Linnaeus, 1758) **DARK TUSSOCK** Local  
Recorded in: SU00; SZ09; SZ19. SU00/0604 Holt Heath (SU0604); 22 Jul (R Hilton). SZ09/MT 0009 Poole (SZ0097); 02 Aug (J Fradgley).
- 72.021 *Spilosoma urticae* (Esper, 1789) **WATER ERMINE** Nb  
Recorded in: SU11. SU11/MT 0001 Alderholt (SU1112); 14 Jun (T Morris).
- 72.025 *Parasemia plantaginis* (Linnaeus, 1758) **WOOD TIGER** Local  
Recorded in: ST60; ST81; ST91; SY69; SY78; SY88; SZ08. ST60/6000 Lankham Bottom (ST6000); field, 10 on 16 May; field, 4 on 19 May (M Ouseley). ST60/6100 Lankham Bottom (ST6100); field, 36 on 19 May; field, 1000 larval on 19 May; 12 on 11 Jun (L de Whalley). ST81/8817 Fontmell Down (ST8817); field, 03 Jun; field, 11 Jun; field, 24 Jun; field, 17 Jul (J Westgate). ST81/8818 Clubmen's Down (ST8818); field, 2 on 02 Jun; field, 14 Jun (W G Shreeves). ST91/9019 Melbury Down and Wood (ST9019); field, 12 Jun (J Westgate). SY69/6099 Lankham Bottom (SY6099); field, 19 May (L de Whalley). SY69/6794 Charlton Down (SY6794); field, 4 on 16 Jun (A Rosenthal). SY78/7880 South Dorset Coast (SY7880); 12 larval on 20 Apr (M S Warren). SY78/7980 South Dorset Coast (SY7980); field, 10 larval on 20 Apr (M S Warren). SY88/8081 South Dorset Coast (SY8081); field, 5 larval on 20 Apr (M S Warren). SZ08/0180 Godlingston Manor (SZ0180); field, 25 May (A Goodall).
- 72.028 *Hyphoraia testudinaria* (Geoffroy, 1785) **PATTON'S TIGER** Unknown  
Recorded in: SY66. SY66/MT 0001 Portland (SY6868); 06 May, **New VC Record** (M Cade).
- 72.034 *Utetheisa pulchella* (Linnaeus, 1758) **CRIMSON SPECKLED** Migrant  
Recorded in: SY58; SY66; SY67. SY58/5387 West Bexington (SY5387); 11 Oct, leg. P H Sterling (P H Sterling, R Lewington). SY66/6768 Isle of Portland (SY6768); field, 10 Nov (J H S Cox). SY67/6971 Isle of Portland (SY6971); field, 09 Oct (S Ellis).
- 72.047 *Eilema caniola* (Hübner, [1808]) **HOARY FOOTMAN** Nb  
Recorded in: SY58; SY79. SY58/5387 West Bexington (SY5387); 29 Sep; 03 Oct (D Foot). SY79/MT 0003 Tincton (SY7892); 26 Jul; 08 Aug (R Cottle).
- 72.060 *Hypenodes humidalis* Doubleday, 1850 **MARSH OBLIQUE-BARRED** Nb  
Recorded in: SY89. SY89/8893 Bloxworth Heath (SY8893); 27 Jun (M S Parsons). SY89/8091 Bryants Puddle Heath (SY8091); sugar, 22 Jul (D Foot).
- 72.072 *Eublemma ostrina* (Hübner, [1808]) **PURPLE MARBLED** Migrant  
Recorded in: SY67; SY77; SY79; SY88. SY67/MT 0006 Weymouth (SY6778); 02 Jul (J Oughton). SY77/7071 Isle of

Portland (SY7071); field, 28 Jun (G Freeman). SY79/7695 Puddletown (SY7695); 09 Oct (H G Wood Homer). SY88/MT 0010 East Lulworth (SY8582); 12 Nov (L J Hill).

72.076 *Catocala fraxini* (Linnaeus, 1758) **CLIFDEN NONPAREIL** Migrant

Recorded in: ST90; SY59; SY68; SY79; SY88; SY98; SZ07; SZ08; SZ19. ST90/MT 0002 Spetisbury (ST9102); 26 Sep, leg. D Kingman (D Kingman, J Kingman). SY59/xxxx Mapperton (SY59); 30 Sep (P H Sterling). SY68/MT 0001 Dorchester (SY6889); 29 Sep (J E Down). SY68/MT 0003 Weymouth (SY6784); 29 Sep (P Harris). SY79/7695 Puddletown (SY7695); 07 Sep; 15 Sep; 2 on 22 Sep; 23 Sep; 2 on 24 Sep; 27 Sep; 30 Sep; 2 on 03 Oct (H G Wood Homer). SY79/MT 0002 Tolpuddle (SY7994); 29 Sep, leg. P H Sterling (J Francis). SY88/MT 0001 East Lulworth (SY8583); 05 Oct (Z Randle). SY88/MT 0010 East Lulworth (SY8582); 06 Oct (L J Hill). SY98/9089 Cold Harbour (SY9089); 20 Sep (P H Sterling). SZ07/0377 Durlston Country Park (SZ0377); 04 Oct, leg. B F Skinner (B F Skinner, B Elliott). SZ08/0288 Brownsea Island (SZ0288); field, 29 Sep (C Thain). SZ08/0383 Studland (SZ0383); 02 Oct (D C G Brown).

72.079 *Catocala electa* (Vieweg, 1790) **ROSY UNDERWING** Vagrant/Accidental

Recorded in: SY58. SY58/5387 West Bexington (SY5387); 22 Aug (P H Sterling).

72.081 *Catocala sponsa* (Linnaeus, 1767) **DARK CRIMSON UNDERWING** RDB2

Recorded in: SU01. SU01/0212 Wimborne St Giles (SU0212); 16 Sep (J C Winterbottom).

73.003 *Trichoplusia ni* (Hübner, [1803]) **NI MOTH** Migrant

Recorded in: ST30; SY39; SY49; SY58; SY66; SY67; SY68; SY78; SY79. Broadmayne, Spring Gardens (SY7387); 21 Sep (P Bruce-Jones). ST30/MT 0001 Marshwood (ST3800); 03 Jul (J Baker). SY39/MT 0001 Charmouth (SY3693); 11 Jul (G Sell). SY49/MT 0002 Bothenhampton (SY4892); 11 Jul (M S Parsons). SY58/5088 Cogden Beach (SY5088); field, 02 Jul (J Chainey). SY58/5387 West Bexington (SY5387); 27 Sep; 10 Jul, leg. P H Sterling (D Foot). SY58/MT 0001 Puncknowle (SY5386); 09 Jun; 03 Jul; 04 Jul; 01 Sep; 02 Sep; 03 Sep; 06 Sep; 14 Sep; 27 Sep (R Eden). SY58/xxxx Abbotsbury (SY58); 01 Oct (M J Deans). SY66/MT 0001 Portland (SY6868); 27 Jun; 03 Jul; 04 Jul; 02 Sep; 03 Sep; 09 Sep; 14 Sep; 15 Sep (M Cade). SY67/6870 Isle of Portland (SY6870); 03 Oct (D Saunders). SY67/6972 Isle of Portland (SY6972); 02 Oct (M Cade). SY67/MT 0001 Weymouth (SY6679); 27 Sep (P H Sterling). SY67/MT 0002 Weymouth (SY6676); 2 on 03 Jul; 13 Jul; 01 Sep (D Foot). SY67/MT 0006 Weymouth (SY6778); 10 Jul; 11 Jul; 2 on 02 Sep (J Oughton). SY68/MT 0003 Weymouth (SY6784); 09 Sep (P Harris). SY79/7695 Puddletown (SY7695); 03 Jul; 05 Jul (H G Wood Homer). SY79/MT 0003 Tincleton (SY7892); 27 Jun (R Cottle).

73.008 *Chrysodeixis chalcites* (Esper, [1803]) **GOLDEN TWIN-SPOT** Migrant

Recorded in: SY66. SY66/MT 0001 Portland (SY6868); 03 Oct (M Cade).

73.010 *Macdunnoughia confusa* (Stephens, 1850) **DEWICK'S PLUSIA** Rare migrant

Recorded in: SU01; SY58; SY66; SY68; SY79. SU01/0212 Wimborne St Giles (SU0212); 28 Oct; 29 Oct (J C Winterbottom). SY58/5387 West Bexington (SY5387); 29 Sep (D Foot). SY58/MT 0001 Puncknowle (SY5386); 29 Sep; 01 Oct (R Eden). SY58/xxxx Abbotsbury (SY58); 01 Oct (M J Deans). SY66/MT 0001 Portland (SY6868); 28 Oct (M Cade). SY68/MT 0003 Weymouth (SY6784); 28 Sep; 22 Oct (P Harris). SY79/7695 Puddletown (SY7695); 13 Oct (H G Wood Homer).

73.026 *Deltote uncula* (Clerck, 1759) **SILVER HOOK** Local

Recorded in: SY98; SZ08. SY98/9189 Morden Bog (SY9189); 25 Jun (G Freeman). SZ08/0383 Studland (SZ0383); field, 5 on 10 Jul (G Freeman).

73.031 *Tyta luctuosa* ([Denis & Schiffermüller], 1775) **FOUR-SPOTTED** Na

Recorded in: SY67. SY67/6870 Isle of Portland (SY6870); 21 Jul; 2 on 28 Jul; 31 Jul (D Saunders).

73.033 *Diloba caeruleocephala* (Linnaeus, 1758) **FIGURE OF EIGHT**

Recorded in: ST61; ST71; ST80; SU11; SY58. ST71/7611 Plumber Farm (ST7611); 10 Oct; 2 on 21 Oct (W T Franklin). ST80/MT 0001 Winterborne Stickland (ST8305); 30 Oct; 2 on 31 Oct; 02 Nov (L de Whalley). SU11/MT 0001 Alderholt (SU1112); 03 Nov; 05 Nov (T Morris). SY58/MT 0001 Puncknowle (SY5386); 19 Sep; 24 Sep; 27 Sep; 30 Sep; 01 Oct; 03 Oct; 4 on 07 Oct; 08 Oct; 4 on 09 Oct; 4 on 11 Oct; 6 on 13 Oct; 5 on 14 Oct; 2 on 15 Oct; 2 on 16 Oct; 17 Oct; 19 Oct; 20 Oct; 21 Oct; 23 Oct; 24 Oct; 2 on 25 Oct; 2 on 26 Oct; 30 Oct; 03 Nov; 04 Nov (R Eden). Yetminster, Shearstones (ST6010); 14 Oct; 15 Oct; 16 Oct; 20 Oct; 26 Oct (C R Burningham).

73.037 *Acronicta tridens* ([Denis & Schiffermüller], 1775) **DARK DAGGER**

Recorded in: SY68. SY68/6680 Southill (SY6680); 16 Jul, gen. det. (P H Sterling, D Foot).

73.038 *Acronicta psi* (Linnaeus, 1758) **GREY DAGGER**

Recorded in: ST72; SU10; SY78; SY88; SZ19. Broadmayne, Spring Gardens (SY7387); field, larval on 19 Sep (P

- Bruce-Jones). ST72/MT 0001 Gillingham (ST7925); larval on 30 Sep; larval on 04 Oct (G R Hopkins). SY88/MT 0010 East Lulworth (SY8582); male on 04 May, gen. det. male on 05 May, gen. det. (L J Hill).
- 73.053 *Cucullia chamomillae* ([Denis & Schiffermüller], 1775) **CHAMOMILE SHARK** Local  
Recorded in: SY58; SY79; SY88. SY58/5387 West Bexington (SY5387); 24 Apr (D Foot). SY58/MT 0001 Puncknowle (SY5386); 01 Apr; 07 Apr; 11 Apr; 2 on 21 Apr; 29 Apr (R Eden). SY79/7695 Puddletown (SY7695); 29 Apr; 09 May; 01 Jun (H G Wood Homer). SY88/MT 0010 East Lulworth (SY8582); 16 Apr (L J Hill).
- 73.065 *Asteroscopus sphinx* (Hufnagel, 1766) **SPRAWLER**  
Recorded in: ST61; ST71; ST72; ST82; SU00; SU11; SY58; SY88; SZ29. ST61/6610 Ryewater Farm (ST6610); 6 on 10 Nov (W T Franklin). ST71/7611 Plumber Farm (ST7611); 18 Nov (W T Franklin). ST72/7720 Hains (ST7720); 04 Nov (W T Franklin). ST82/8028 Milton on Stour (ST8028); 10 Nov (J Burge). SU00/0609 Boys Wood (SU0609); 16 on 17 Nov (V Giavarini). SU11/MT 0001 Alderholt (SU1112); 12 Nov; 21 Nov (T Morris). SY58/MT 0001 Puncknowle (SY5386); 06 Nov; 07 Nov; 08 Nov; 10 Nov; 11 Nov; 13 Nov; 14 Nov; 16 Nov; 19 Nov; 21 Nov; 22 Nov; 23 Nov; 24 Nov; 25 Nov (R Eden). SY88/MT 0010 East Lulworth (SY8582); 10 Nov; 11 Nov; 14 Nov (L J Hill).
- 73.070 *Pyrrhia umbra* (Hufnagel, 1766) **BORDERED SALLOW** Local  
Recorded in: SY39; SY58; SY67; SY68; SZ07; SZ08. SY39/MT 0001 Charmouth (SY3693); 17 May; 06 Jun; 08 Jun; 22 Jun; 26 Jun (G Sell). SY58/MT 0001 Puncknowle (SY5386); 11 Jun (R Eden). SY67/6870 Isle of Portland (SY6870); 14 Jun; 19 Jun; 29 Jun; 09 Jul; 12 Jul; 13 Jul; 23 Jul; 29 Jul; 30 Jul; 10 Aug (D Saunders). SY67/6871 Isle of Portland (SY6871); 02 Jul, leg. R R Cook (R R Cook, A Page). SY67/6972 Isle of Portland (SY6972); 10 on 02 Jul, leg. N Spring (N Spring, D Kingman). SY67/MT 0005 Portland (SY6871); 14 Jul (J Williamson). SY67/MT 0006 Weymouth (SY6778); 27 Jun (J Oughton). SY68/MT 0001 Dorchester (SY6889); 04 Jun (J E Down). SZ07/0377 Durlston Country Park (SZ0377); 3 on 15 Jun; 4 on 03 Jul; 29 Jul (S Breeze). SZ07/MT 0002 Swanage (SZ0278); 11 Jun; 19 Jun; 26 Jun; 03 Jul (P England). SZ08/0383 Studland (SZ0383); 3 on 25 Sep (D C G Brown).
- 73.073 *Heliothis maritima* Graslin, 1855 **SHOULDER-STRIPED CLOVER** RDB3  
Recorded in: SU00. SU00/0604 Holt Heath (SU0604); field, larval on 24 Aug (M S Parsons).
- 73.091 *Elaphria venustula* (Hübner, 1790) **ROSY MARBLED** Nb  
Recorded in: SU10; SU11; SY89; SZ19. SU11/MT 0001 Alderholt (SU1112); 02 Jun (T Morris). SY89/8893 Bloxworth Heath (SY8893); 27 Jun (M S Parsons).
- 73.093 *Caradrina kadenii* (Freyer, [1836]) **CLANCY'S RUSTIC** Migrant  
Recorded in: SY49; SY58; SY67; SY68; SY79; SY88; SY97; SZ07; SZ08. SY49/MT 0002 Bothenhampton (SY4892); 12 Oct (M S Parsons). SY58/5387 West Bexington (SY5387); 2 on 27 Sep; 29 Sep; 2 on 01 Oct; 2 on 03 Oct (D Foot). SY58/5685 Knolls (SY5685); 30 Sep (M J Deans). SY58/MT 0001 Puncknowle (SY5386); 19 Sep; 26 Sep; 6 on 30 Sep; 2 on 01 Oct; 2 on 02 Oct; 03 Oct; 04 Oct; 05 Oct; 2 on 08 Oct; 4 on 09 Oct; 2 on 12 Oct; 14 Oct; 18 Oct; 22 Oct; 28 Oct; 07 Nov (R Eden). SY58/xxxx Abbotsbury (SY58); 4 on 01 Oct (M J Deans). SY67/6870 Isle of Portland (SY6870); 16 Oct (D Saunders). SY67/MT 0006 Weymouth (SY6778); 29 Sep (J Oughton). SY68/MT 0003 Weymouth (SY6784); 27 Sep; 28 Sep; 30 Sep; 01 Oct; 2 on 04 Oct; 08 Oct; 10 Oct (P Harris). SY79/7695 Puddletown (SY7695); 01 Nov (H G Wood Homer). SY88/MT 0001 East Lulworth (SY8583); 04 Oct (L J Hill). SY97/9677 Worth Matravers (SY9677); 29 Sep (D C G Brown). SZ07/0377 Durlston Country Park (SZ0377); 28 Sep (M J Deans). SZ07/MT 0001 Swanage (SZ0278); 27 Sep; 01 Oct (R Cox). SZ08/0383 Studland (SZ0383); 02 Oct (D C G Brown).
- 73.100 *Chilodes maritima* (Tauscher, 1806) **SILKY WAINSCOT** Local  
Recorded in: SY67; SY68; SZ08. SY67/MT 0006 Weymouth (SY6778); 27 Jun; 30 Jun (J Oughton). SY68/6680 Southill (SY6680); 16 Jul, leg. P H Sterling (P H Sterling, D Foot). SY68/6881 Lodmoor (SY6881); 27 Jul (R R Cook). SZ08/0383 Studland (SZ0383); 02 Aug (D C G Brown).
- 73.119 *Helotropha leucostigma* (Hübner, [1808]) **CRESCENT** Local  
Recorded in: SY68. SY68/6680 Southill (SY6680); 16 Jul, leg. P H Sterling (P H Sterling, D Foot). SY68/MT 0002 Chickerell (SY6580); 12 Jul, gen. det. (C Pinder).
- 73.127 *Amphipoea lucens* (Freyer, 1845) **LARGE EAR** Local  
Recorded in: SY66. SY66/MT 0001 Portland (SY6868); 07 Aug, gen. det. (M Cade).
- 73.135 *Sedina buettneri* (Hering, 1858) **BLAIR'S WAINSCOT** RDB1  
Recorded in: SY59. Field, 30 on 28 Sep (D Wilson).
- 73.137 *Arenostola phragmitidis* (Hübner, [1803]) **FEN WAINSCOT** Local  
Recorded in: SY48; SY58; SY66; SY68; SY98; SZ09; SZ19. SY48/4988 Burton Bradstock (SY4988); field, 01 Jul (M S Parsons). SY58/MT 0001 Puncknowle (SY5386); 19 Jul; 2 on 24 Jul (R Eden). SY66/MT 0001 Portland (SY6868); 11



- Jul (M Cade). SY68/6680 Southill (SY6680); 16 Jul, leg. P H Sterling (P H Sterling, D Foot). SY68/6881 Lodmoor (SY6881); 27 Jul (R R Cook). SY68/MT 0002 Chickereil (SY6580); 01 Aug (C Pinder). SY98/MT 0007 Wareham (SY9288); 04 Aug (R W Adams). SZ09/MT 0006 Poole (SZ0291); 11 Jul; 16 Jul (V Giavarini).
- 73.145 *Photodes fluxa* (Hübner, [1809]) **MERE WAINSCOT** Nb  
Recorded in: ST70; ST72. ST70/7404 Melcombe Park (ST7404); 10 on 27 Jul (H G Wood Homer). ST72/MT 0001 Gillingham (ST7925); 13 Sep (G R Hopkins).
- 73.148 *Photodes morrisii* (Dale, 1837) **MORRIS'S WAINSCOT** RDB1  
Recorded in: SY39. SY39/MT 0001 Charmouth (SY3693); 27 Jun; 16 Jul; 17 Jul; 2 on 24 Jul; 25 Jul (G Sell).
- 73.151 *Globia sparganii* (Esper, 1789) **WEBB'S WAINSCOT** Nb  
Recorded in: SY68; SY79; SY89; SY98; SZ07; SZ08; SZ29. Ridge, Sunnyside (SY9386); 09 Jul (R Carpenter). SY68/6680 Southill (SY6680); 16 Jul, leg. P H Sterling (P H Sterling, D Foot). SY79/7695 Puddletown (SY7695); 15 Aug; 08 Sep (H G Wood Homer). SY89/8193 Briantspuddle (SY8193); 25 Jul (J D McMillan). SZ07/0377 Durlston Country Park (SZ0377); 02 Sep; 13 Aug (D C G Brown). SZ08/0383 Studland (SZ0383); 29 Aug (D C G Brown).
- 73.157 *Apamea anceps* ([Denis & Schiffermüller], 1775) **LARGE NUTMEG** Local  
Recorded in: SZ09. SZ09/MT 0009 Poole (SZ0097); 15 Jun (J Fradgley).
- 73.164 *Apamea sublustris* (Esper, 1788) **REDDISH LIGHT ARCHES** Local  
Recorded in: SU11; SY67; SY78; SY79; SZ07. Broadmayne, Spring Gardens (SY7387); 20 Jul (P Bruce-Jones). SU11/MT 0001 Alderholt (SU1112); 09 Jul (T Morris). SY67/MT 0002 Weymouth (SY6676); 26 Jul (D Foot). SY67/MT 0006 Weymouth (SY6778); 28 Jul (J Oughton). SY79/7695 Puddletown (SY7695); 30 Jun; 11 Jul; 21 Jul (H G Wood Homer). SZ07/0377 Durlston Country Park (SZ0377); 07 Jun; 4 on 15 Jun; 25 Jun; 26 Jun; 5 on 04 Jul; 15 Jul; 2 on 23 Jul (S Breeze). SZ07/MT 0002 Swanage (SZ0278); 3 on 26 Jun; 03 Jul; 10 Jul (P England).
- 73.169 *Mesapamea secalis* (Linnaeus, 1758) **COMMON RUSTIC**  
Recorded in: SU00; SU10; SY99; SZ19; SZ29. Chestnut Grove, Stapehill (SU0500); male on 26 Jul, gen. det. (D J Evans). SY99/9892 Upton Country Park (SY9892); 3 on 09 Aug, gen. det. (D J Evans).
- 73.170 *Mesapamea didyma* (Esper, 1788) **LESSER COMMON RUSTIC**  
Recorded in: ST40; SZ19; SZ29. ST40/MT 0001 Beaminster (ST4701); 30 Sep, gen. det. (S Philp).
- 73.174 *Oligia latruncula* ([Denis & Schiffermüller], 1775) **TAWNY MARBLED MINOR**  
Recorded in: SU00; SU10; SZ19. West Moors, Hatchard's Copse (SU0703); male on 07 Jun, gen. det. male on 02 Jul, gen. det. (D J Evans).
- 73.178 *Leucochlaena oditis* (Hübner, [1822]) **BEAUTIFUL GOTHIC** RDB3  
Recorded in: SY67; SZ07. SY67/6870 Isle of Portland (SY6870); 02 Oct; 08 Oct; 14 Oct (D Saunders). SY67/MT 0005 Portland (SY6871); 09 Sep; 23 Sep; 30 Sep (J Williamson). SZ07/0076 Blackers Hole (SZ0076); 29 Sep (R Cox). SZ07/0277 Durlston Country Park (SZ0277); 2 on 23 Sep (P Clarke). SZ07/0377 Durlston Country Park (SZ0377); 23 Sep; 28 Sep; 29 Sep, leg. L de Whalley; 02 Oct; 22 Oct; 03 Oct, leg. B F Skinner (S Breeze). SZ07/MT 0001 Swanage (SZ0278); 2 on 09 Sep; 10 Sep; 17 Sep; 2 on 19 Sep; 20 Sep; 22 Sep; 23 Sep; 2 on 24 Sep; 4 on 25 Sep; 3 on 26 Sep; 2 on 28 Sep; 4 on 29 Sep; 30 Sep; 01 Oct; 12 Oct (R Cox). SZ07/MT 0002 Swanage (SZ0278); 18 Sep (P England).
- 73.183 *Cirrhia gilvago* ([Denis & Schiffermüller], 1775) **DUSKY-LEMON SALLOW** Local  
Recorded in: ST82; SY58. ST82/8028 Milton on Stour (ST8028); 27 Sep; 11 Oct (J Burge). SY58/MT 0001 Puncknowle (SY5386); 29 Sep (R Eden).
- 73.184 *Cirrhia ocellaris* (Borkhausen, 1792) **PALE-LEMON SALLOW** Na  
Recorded in: SY58; SZ07. SY58/5387 West Bexington (SY5387); 01 Oct; 15 Oct (D Foot). SY58/xxxx Abbotsbury (SY58); 01 Oct (M J Deans). SZ07/0377 Durlston Country Park (SZ0377); 24 Sep; 29 Sep (M J Deans).
- 73.188 *Agrochola helvola* (Linnaeus, 1758) **FLOUNCED CHESTNUT**  
Recorded in: SY39; SY79; SY88; SY98; SZ08; SZ19. SY39/MT 0001 Charmouth (SY3693); 30 Sep (G Sell). SY79/7695 Puddletown (SY7695); 11 Oct; 15 Oct (H G Wood Homer). SY79/MT 0002 Tolpuddle (SY7994); 23 Oct (J Francis). SY79/MT 0003 Tincton (SY7892); 30 Sep; 2 on 03 Oct; 07 Oct; 11 Oct; 16 Oct; 22 Oct (R Cottle). SY88/MT 0001 East Lulworth (SY8583); 13 Oct (L J Hill). SY98/MT 0009 Corfe Castle (SY9881); 13 Oct (D Gould). SZ08/0383 Studland (SZ0383); 01 Oct (D C G Brown).

- 73.191 *Agrochola haematidea* (Duponchel, 1827) **SOUTHERN CHESTNUT** RDB2  
Recorded in: SU11; SZ19. SU11/MT 0001 Alderholt (SU1112); 30 Sep; 21 Oct (T Morris).
- 73.198 *Conistra erythrocephala* ([Denis & Schiffermüller], 1775) **RED-HEADED CHESTNUT** Rare migrant  
Recorded in: SY66; SY67. SY66/MT 0001 Portland (SY6868); 04 Nov; 22 Nov (M Cade). SY67/6972 Isle of Portland (SY6972); 31 Oct (B F Skinner).
- 73.200 *Lithophane semibrunnea* (Haworth, 1809) **TAWNY PINION** Local  
Recorded in: SU11; SY49; SY58; SY79. SU11/MT 0001 Alderholt (SU1112); 17 Mar (T Morris). SY49/MT 0002 Bothenhampton (SY4892); 30 Mar (M S Parsons). SY58/MT 0001 Puncknowle (SY5386); 23 Mar; 30 Mar; 15 Apr (R Eden). SY79/7695 Puddletown (SY7695); 21 Mar; 2 on 02 Apr; 03 Apr; 10 Apr; 21 Apr (H G Wood Homer). SY79/MT 0002 Tolpuddle (SY7994); 23 Apr (J Francis).
- 73.213 *Ipimorpha subtusa* ([Denis & Schiffermüller], 1775) **OLIVE** Local  
Recorded in: ST72; SY67; SY79; SY88; SZ08; SZ09. ST72/MT 0001 Gillingham (ST7925); 02 Aug (G R Hopkins). SY67/MT 0002 Weymouth (SY6676); 27 Jul (D Foot). SY79/7695 Puddletown (SY7695); 24 Jul (H G Wood Homer). SY79/MT 0002 Tolpuddle (SY7994); 24 Jul (J Francis). SY79/MT 0003 Tinctleton (SY7892); 2 on 26 Jul; 29 Jul (R Cottle). SY88/8582 Lulworth Park and Lake (SY8582); 23 Jul, leg. S Phelps; 28 Jul, leg. S Phelps (S Phelps, W T Franklin, L Butt, L Clarke). SZ08/0184 Greenlands Farm (SZ0184); 19 Aug, leg. W T Franklin (W T Franklin, P Wood). SZ09/MT 0009 Poole (SZ0097); 15 Jun (J Fradgley).
- 73.223 *Dryobota labecula* (Esper, 1788) **OAK RUSTIC** Rare migrant  
Recorded in: SZ07; SZ08. SZ07/0377 Durlston Country Park (SZ0377); 02 Oct, leg. D C G Brown; 24 on 22 Oct; 7 on 26 Oct; 2 on 01 Nov; 2 on 28 Sep; 5 on 29 Sep; 02 Oct, leg. B F Skinner; 03 Oct, leg. B F Skinner; 04 Oct, leg. B F Skinner; 05 Oct, leg. B F Skinner; 06 Oct, leg. B F Skinner (D C G Brown, B Bewsher, D Smith). SZ07/MT 0002 Swanage (SZ0278); 11 Oct; 2 on 20 Oct; 4 on 30 Oct; 13 Nov; 23 Nov (P England). SZ08/0383 Studland (SZ0383); 29 Oct (D C G Brown).
- 73.227 *Dryobotodes tenebrosa* (Esper, 1789) **SOMBRE BROCADE** Migrant  
Recorded in: SY58; SZ07; SZ08. SY58/5685 Abbotsbury (SY5685); 3 on 23 Sep; 3 on 03 Oct (M S Parsons). SZ07/0377 Durlston Country Park (SZ0377); 29 Sep, leg. L de Whalley; 22 Sep; field, 2 on 24 Sep; 8 on 28 Sep; 7 on 29 Sep (L de Whalley, D Kingman). SZ08/0383 Studland (SZ0383); 29 Sep (D C G Brown).
- 73.229 *Trigonophora flammea* (Esper, 1785) **FLAME BROCADE** Migrant  
Recorded in: SY58; SY66; SY67; SY88; SZ07. SY58/5386 West Bexington (SY5386); outside light, 29 Sep (C Rogers). SY58/5387 West Bexington (SY5387); 02 Oct; 03 Oct (P H Sterling). SY58/MT 0001 Puncknowle (SY5386); 29 Sep; 07 Oct; 24 Oct; 25 Oct; 26 Oct (R Eden). SY66/MT 0001 Portland (SY6868); 07 Oct; 08 Oct; 25 Oct; 27 Oct (M Cade). SY67/6870 Isle of Portland (SY6870); 07 Oct; 13 Oct; 15 Oct; 13 Oct; 15 Oct (D Saunders). SY67/6871 Isle of Portland (SY6871); 15 Oct; 17 Oct (Unknown). SY67/6972 Isle of Portland (SY6972); 2 on 30 Sep; 02 Oct; 04 Oct; 05 Oct; 31 Oct (M Cade). SY67/MT 0005 Portland (SY6871); 30 Sep, leg. M Cade; 01 Oct (J Williamson). SY88/MT 0010 East Lulworth (SY8582); 29 Oct; 30 Oct; 2 on 31 Oct (L J Hill). SZ07/0076 Blackers Hole (SZ0076); 29 Sep (R Cox). SZ07/0377 Durlston Country Park (SZ0377); 02 Oct, leg. B F Skinner (B F Skinner, B Elliott).
- 73.230 *Aporophyla australis* (Boisduval, 1829) **FEATHERED BRINDLE** Nb  
Recorded in: SY49; SY58; SY67; SY68; SY97; SY98; SZ07; SZ08. SY49/MT 0002 Bothenhampton (SY4892); 02 Oct (M S Parsons). SY58/5387 West Bexington (SY5387); 27 Sep (D Foot). SY58/5684 Abbotsbury (SY5684); outside light, 2 on 26 Sep; outside light, 8 on 27 Sep; outside light, 24 Oct; outside light, 28 Oct (C Rogers). SY58/5685 Abbotsbury (SY5685); 6 on 23 Sep; 15 on 03 Oct (M S Parsons). SY58/MT 0001 Puncknowle (SY5386); 08 Sep; 14 Sep; 16 Sep; 18 Sep; 19 Sep; 20 Sep; 21 Sep; 22 Sep; 23 Sep; 24 Sep; 25 Sep; 26 Sep; 27 Sep; 28 Sep; 29 Sep; 30 Sep; 01 Oct; 02 Oct; 03 Oct; 04 Oct; 05 Oct; 06 Oct; 07 Oct; 08 Oct; 09 Oct; 10 Oct; 11 Oct; 12 Oct; 13 Oct; 15 Oct; 16 Oct; 18 Oct; 21 Oct; 24 Oct (R Eden). SY67/6870 Isle of Portland (SY6870); 30 Sep; 01 Oct; 02 Oct; 03 Oct; 04 Oct; 12 Oct; 13 Oct (D Saunders). SY67/MT 0005 Portland (SY6871); 2 on 23 Sep; 4 on 30 Sep; 2 on 01 Oct (J Williamson). SY67/MT 0006 Weymouth (SY6778); 25 Sep; 26 Sep (J Oughton). SY68/MT 0002 Chickerell (SY6580); 26 Sep (C Pinder). SY68/MT 0003 Weymouth (SY6784); 03 Oct (P Harris). SY97/9677 Worth Matravers (SY9677); 14 on 25 Sep; 12 on 26 Sep; 12 on 27 Sep; 28 Sep; 20 on 29 Sep; 10 on 01 Oct; 20 on 02 Oct, leg. D C G Brown (D C G Brown). SY98/MT 0009 Corfe Castle (SY9881); 25 Sep (D Gould). SZ07/0076 Blackers Hole (SZ0076); 29 Sep; 30 Sep (R Cox). SZ07/0277 Durlston Country Park (SZ0277); 7 on 24 Sep; field, 17 Sep; 17 Sep, leg. N Percival; 3 on 23 Sep (P Clarke). SZ07/0377 Durlston Country Park (SZ0377); 02 Sep; 2 on 26 Sep; 27 Sep; 01 Oct; 12 on 02 Oct, leg. D C G Brown; 01 Sep; 3 on 10 Sep; 2 on 17 Sep; 23 Sep; 19 on 24 Sep; 43 on 25 Sep; 17 on 26 Sep; 8 on 27 Sep; 22 on 28 Sep; 4 on 29 Sep, leg. L de Whalley; 37 on 02 Oct; 2 on 06 Oct; 22 Oct; 23 Oct; 5 on 22 Sep; 02 Oct, leg. B F Skinner; 03 Oct, leg. B F Skinner; 04 Oct, leg. B F Skinner; 05 Oct, leg. B F Skinner; 06 Oct, leg. B F Skinner; 46 on 29 Oct (D C G Brown). SZ07/MT 0001 Swanage (SZ0278); 27 Sep; 03 Oct; 13 Oct (R Cox). SZ07/MT 0002 Swanage (SZ0278); 18 Sep; 2 on 24 Sep; 4 on 29 Sep; 2 on 01 Oct; 08 Oct; 11 Oct; 2 on 16 Oct (P England). SZ08/0383 Studland (SZ0383); 2 on 25 Sep; 4 on 29 Sep; 2 on 02 Oct (D C G Brown).

- 73.231 *Aporophyla lutulenta* ([Denis & Schiffermüller], 1775) **DEEP-BROWN DART**  
Recorded in: SU11; SY78; SY88; SZ19. Broadmayne, Spring Gardens (SY7387); 27 Sep (P Bruce-Jones). SU11/MT 0001 Alderholt (SU1112); 27 Sep; 2 on 30 Sep; 01 Oct (T Morris). SY88/MT 0004 East Holme (SY8986); 04 Oct (J H S Cox).
- 73.234 *Dasyptolia templi* (Thunberg, 1792) **BRINDLED OCHRE** Local  
Recorded in: SY49; SY58; SY67; SY79; SY88; SY97; SZ07. SY49/MT 0002 Bothenhampton (SY4892); 30 Sep (M S Parsons). SY58/5387 West Bexington (SY5387); 28 Sep (D Foot). SY58/5685 Knolls (SY5685); 30 Sep (M J Deans). SY58/MT 0001 Puncknowle (SY5386); 13 Oct (R Eden). SY67/MT 0002 Weymouth (SY6676); 08 Oct (D Foot). SY67/MT 0006 Weymouth (SY6778); 13 Oct (J Oughton). SY79/7695 Puddletown (SY7695); 23 Sep (H G Wood Homer). SY79/MT 0003 Tincton (SY7892); 28 Oct (R Cottle). SY88/MT 0010 East Lulworth (SY8582); 06 Oct; 29 Oct (L J Hill). SY97/9677 Worth Matravers (SY9677); 29 Sep (D C G Brown). SZ07/0377 Durlston Country Park (SZ0377); 06 Oct, leg. B F Skinner (B F Skinner, B Elliott).
- 73.237 *Polymixis flavicineta* ([Denis & Schiffermüller], 1775) **LARGE RANUNCULUS** Local  
Recorded in: ST40; ST61; SY39; SY49; SY58; SY67; SZ19. ST40/MT 0001 Beaminster (ST4701); 30 Sep (S Philp). SY39/MT 0001 Charmouth (SY3693); 19 Sep; 21 Sep; 22 Sep; 24 Sep; 25 Sep; 26 Sep (G Sell). SY49/MT 0002 Bothenhampton (SY4892); 4 on 19 Sep; 3 on 20 Sep (M S Parsons). SY58/5387 West Bexington (SY5387); 29 Sep; 10 Oct, leg. P H Sterling; 11 Oct, leg. P H Sterling (D Foot). SY58/5388 Puncknowle (SY5388); 2 on 28 Aug (M Hetherington). SY58/MT 0001 Puncknowle (SY5386); 20 Sep; 23 Sep; 03 Oct; 06 Oct; 07 Oct; 08 Oct (R Eden). SY67/6870 Isle of Portland (SY6870); 28 Aug (D Saunders). SY67/MT 0005 Portland (SY6871); 4 on 30 Sep, leg. M Cade (J Williamson). Yetminster, Shearstones (ST6010); 20 Sep; 22 Sep; 2 on 24 Sep; 25 Sep; 28 Sep (C R Burningham).
- 73.243 *Orthosia miniosa* ([Denis & Schiffermüller], 1775) **BLOSSOM UNDERWING** Local  
Recorded in: ST70; ST71; SU11. ST70/7404 Melcombe Park (ST7404); 3 on 07 Apr (H G Wood Homer). ST71/7310 Alners Gorse (ST7310); 30 Apr (N Spring). SU11/MT 0001 Alderholt (SU1112); 23 Mar; 07 Apr; 08 Apr; 09 Apr; 14 Mar (T Morris).
- 73.248 *Orthosia opima* (Hübner, [1809]) **NORTHERN DRAB** Local  
Recorded in: ST72; SU11; SY58. ST72/MT 0001 Gillingham (ST7925); 15 Apr; 19 Apr (G R Hopkins). SU11/MT 0001 Alderholt (SU1112); 02 Apr; 23 Apr; 29 Apr (T Morris). SY58/MT 0001 Puncknowle (SY5386); 23 Apr (R Eden).
- 73.254 *Cerapteryx graminis* (Linnaeus, 1758) **ANTLER MOTH**  
Recorded in: ST40; ST60; ST61; SY49; SY58; SY59; SY66; SY67; SY68; SY69; SY79; SY89; SY98; SZ07; SZ19. Ridge, Sunnyside (SY9386); 27 Jul; indoors, 05 Aug (R Carpenter). ST40/MT 0002 Beaminster (ST4801); 3 on 11 Aug, leg. M Raper (M Raper, D Raper). ST60/MT 0002 Chetnole (ST6007); 2 on 29 Jul (I Davenport). SY49/MT 0002 Bothenhampton (SY4892); 26 Jul (M S Parsons). SY58/MT 0001 Puncknowle (SY5386); 25 Jul; 26 Jul (R Eden). SY59/5599 Lower Kingcombe (SY5599); 2 on 02 Sep (N Spring). SY66/MT 0001 Portland (SY6868); 27 Jul; 13 Aug (M Cade). SY67/6870 Isle of Portland (SY6870); 09 Jul; 21 Aug (D Saunders). SY68/MT 0002 Chickerell (SY6580); 27 Jul; 28 Jul (C Pinder). SY69/6693 Wrackelford (SY6693); 17 Aug, leg. M S Parsons (Z Randle). SY79/MT 0003 Tincton (SY7892); 10 Aug (R Cottle). SY89/8193 Briantspuddle (SY8193); 26 Jul (J D McMillan). SY98/9187 West Mills (SY9187); field, 31 Jul; field, 27 Jul (P Orchard). SY98/MT 0004 Wareham Town (SY9287); 05 Aug (B D D Young). SY98/MT 0007 Wareham (SY9288); 29 Jul; 12 Aug (R W Adams). SZ07/0377 Durlston Country Park (SZ0377); 02 Aug (D C G Brown). Yetminster, Shearstones (ST6010); 30 Aug (C R Burningham).
- 73.265 *Lacanobia contigua* ([Denis & Schiffermüller], 1775) **BEAUTIFUL BROCADE** Local  
Recorded in: SY89; SY98; SZ09. SY89/8193 Briantspuddle (SY8193); 27 May (J D McMillan). SY98/9189 Morden Bog (SY9189); 2 on 25 Jun (G Freeman). SZ09/MT 0009 Poole (SZ0097); 15 Jun; 12 Jul (J Fradgley).
- 73.266 *Lacanobia suasa* ([Denis & Schiffermüller], 1775) **DOG'S TOOTH** Local  
Recorded in: SY67; SY68; SY79; SZ19. SY67/MT 0001 Weymouth (SY6679); 29 Apr (P H Sterling). SY68/6881 Lodmoor (SY6881); 27 Jul; 03 Aug (R R Cook). SY68/MT 0003 Weymouth (SY6784); 26 Jun; 16 Aug (P Harris). SY79/MT 0002 Tolpuddle (SY7994); 24 Jul, leg. P H Sterling (J Francis).
- 73.283 *Hadena confusa* (Hufnagel, 1766) **MARbled CORONET** Local  
Recorded in: SY58. SY58/5684 Abbotsbury (SY5684); outside light, 02 Jun (C Rogers). SY58/MT 0001 Puncknowle (SY5386); 14 Jun (R Eden).
- 73.286 *Hadena perplexa* ([Denis & Schiffermüller], 1775) **TAWNY SHEARS**  
Recorded in: SY49; SY58; SY88. SY49/MT 0002 Bothenhampton (SY4892); 26 Apr (M S Parsons). SY58/5387 West Bexington (SY5387); 23 Apr (D Foot). SY58/5684 Abbotsbury (SY5684); outside light, 31 May; outside light, 14 Jul; outside light, 04 Sep (C Rogers). SY58/5982 West Fleet (SY5982); 3 on 01 Jul; 4 on 01 Jul (P H Sterling). SY58/MT

- 0001 Puncknowle (SY5386); 4 on 19 Apr; 4 on 20 Apr; 21 Apr; 10 on 22 Apr; 23 Apr; 24 Apr; 25 Apr; 26 Apr; 27 Apr; 28 Apr; 29 Apr; 30 Apr; 01 May; 05 May; 08 May; 09 May; 10 May; 11 May; 12 May; 13 May; 16 May; 17 May; 19 May; 20 May; 22 May; 24 May; 25 May; 29 May; 01 Jun; 03 Jun; 04 Jun; 05 Jun; 11 Jun; 14 Jun; 23 Jun; 25 Jun; 26 Jun; 27 Jun; 28 Jun; 29 Jun; 30 Jun; 01 Jul; 02 Jul; 03 Jul; 05 Jul; 09 Jul; 11 Jul; 12 Jul; 13 Jul; 14 Jul; 15 Jul; 16 Jul; 19 Jul; 31 Jul; 01 Aug; 28 Aug; 29 Aug; 30 Aug; 31 Aug; 01 Sep; 02 Sep; 14 Sep (R Eden). SY88/MT 0001 East Lulworth (SY8583); 05 May (L J Hill). SY88/MT 0010 East Lulworth (SY8582); 19 Apr; 4 on 20 Apr; 23 Apr; 11 May (L J Hill).
- 73.288 *Mythimna turca* (Linnaeus, 1761) **DOUBLE LINE** Nb  
Recorded in: ST73. ST73/7931 Bagmore Wood (ST7931); 16 Jun (M Plaxton).
- 73.290 *Mythimna conigera* ([Denis & Schiffermüller], 1775) **BROWN-LINE BRIGHT-EYE**  
Recorded in: ST73; SU01; SY58; SY67; SY78; SY79; SZ07; SZ19. Broadmayne, Spring Gardens (SY7387); 08 Aug (P Bruce-Jones). ST73/7931 Bagmore Wood (ST7931); 27 Jul (M Plaxton). SU01/0212 Wimborne St Giles (SU0212); 23 Jul; 07 Aug (J C Winterbottom). SY58/5684 Abbotsbury (SY5684); outside light, 04 Jun; outside light, 09 Jun (C Rogers). SY67/6870 Isle of Portland (SY6870); 27 Jun; 28 Jun; 29 Jun; 30 Jun; 02 Jul; 03 Jul; 04 Jul; 10 Jul; 11 Jul; 12 Jul; 13 Jul; 14 Jul; 16 Jul; 17 Jul; 18 Jul; 19 Jul; 20 Jul; 21 Jul; 22 Jul; 23 Jul; 24 Jul; 25 Jul; 26 Jul; 27 Jul; 28 Jul; 29 Jul; 30 Jul; 31 Jul; 01 Aug; 02 Aug; 05 Aug; 07 Aug; 09 Aug; 12 Aug; 13 Aug; 18 Aug (D Saunders). SY67/6871 Isle of Portland (SY6871); 02 Jul, leg. R R Cook (R R Cook, A Page). SY67/6972 Isle of Portland (SY6972); 20 on 02 Jul, leg. N Spring (N Spring, D Kingman). SY67/MT 0005 Portland (SY6871); 14 Jul; 22 Jul; 2 on 30 Jul; 4 on 05 Aug (J Williamson). SY79/MT 0002 Tolpuddle (SY7994); 16 on 11 Jul; 6 on 25 Jul (J Francis). SY79/MT 0003 Tincleton (SY7892); 11 Jul (R Cottle). SZ07/0377 Durlston Country Park (SZ0377); 2 on 29 Jul (S Breeze).
- 73.291 *Mythimna favicolor* (Barrett, 1896) **MATHEW'S WAINSCOT** Nb  
Recorded in: SY79. SY79/7695 Puddletown (SY7695); 03 Sep (H G Wood Homer).
- 73.296 *Mythimna unipuncta* (Haworth, 1809) **WHITE-SPECK** Migrant  
Recorded in: SY49; SY58; SY66; SY68. SY49/MT 0002 Bothenhampton (SY4892); 29 Sep; 30 Sep (M S Parsons). SY58/5685 Knolls (SY5685); 30 Sep (M J Deans). SY58/MT 0001 Puncknowle (SY5386); 30 Sep; 31 Oct; 04 Nov (R Eden). SY58/xxxx Abbotsbury (SY58); 01 Oct (M J Deans). SY66/MT 0001 Portland (SY6868); 29 Oct; 2 on 30 Oct; 04 Nov (M Cade). SY68/MT 0003 Weymouth (SY6784); 29 Oct (P Harris).
- 73.304 *Leucania loreyi* (Duponchel, 1827) **COSMOPOLITAN** Migrant  
Recorded in: SY58; SY66. SY58/5387 West Bexington (SY5387); 2 on 01 Oct (D Foot). SY66/MT 0001 Portland (SY6868); 16 Oct; 28 Oct; 30 Oct (M Cade).
- 73.314 *Euxoa nigricans* (Linnaeus, 1761) **GARDEN DART**  
Recorded in: SU01; SY67; SY78; SZ07; SZ08. SU01/0212 Wimborne St Giles (SU0212); 02 Sep; 16 Sep (J C Winterbottom). SY67/MT 0002 Weymouth (SY6676); 21 Jul (D Foot). SY78/MT 0006 Weymouth (SY7083); 24 Jul (D Emery). SZ07/MT 0002 Swanage (SZ0278); 19 Jun (P England). SZ08/0184 Greenlands Farm (SZ0184); 26 Aug, leg. W T Franklin (W T Franklin, P Wood).
- 73.316 *Agrotis cinerea* ([Denis & Schiffermüller], 1775) **LIGHT FEATHERED RUSTIC** Nb  
Recorded in: SZ07; SZ19. SZ07/005/41 South Dorset Coast (SMU 41) (SZ0377); 29 Apr; 02 May; 13 May; 15 May; 21 May; 31 May (Unknown). SZ07/0377 Durlston Country Park (SZ0377); 21 Apr; 4 on 29 Apr; 5 on 02 May; 35 on 08 May; 09 May; 26 on 13 May; 13 on 15 May; 14 on 18 May; 9 on 20 May; 21 May; 31 May; 2 on 01 Jun; 03 Jun (S Breeze). SZ07/MT 0002 Swanage (SZ0278); 09 May; 18 May (P England).
- 73.322 *Agrotis vestigialis* (Hufnagel, 1766) **ARCHER'S DART** Local  
Recorded in: SU10; SY89; SY98; SZ08; SZ19. SY89/8193 Briantspuddle (SY8193); 20 Aug; 22 Aug (J D McMillan). SY98/MT 0004 Wareham Town (SY9287); 09 Sep (B D D Young). SZ08/0383 Studland (SZ0383); 01 Aug; 2 on 03 Aug; 29 Aug (D C G Brown).
- 73.324 *Agrotis trux* (Hübner, [1824]) **CRESCENT DART** Local  
Recorded in: SY39; SY49; SY58; SY66; SY67; SY88; SZ07. SY39/MT 0001 Charmouth (SY3693); 22 Jul; 01 Aug; 2 on 23 Aug (G Sell). SY49/4291 Seatown (SY4291); 2 on 08 Aug; 5 on 11 Aug (G Carr). SY49/MT 0002 Bothenhampton (SY4892); 01 Jul; 28 Jul; 29 Jul (M S Parsons). SY58/MT 0001 Puncknowle (SY5386); 29 Jun; 30 Jun; 16 Jul; 17 Jul; 23 Jul; 24 Jul; 2 on 26 Jul; 27 Jul; 2 on 28 Jul; 2 on 29 Jul; 30 Jul; 31 Jul; 05 Aug; 2 on 06 Aug; 07 Aug; 08 Aug (R Eden). SY66/6768 Isle of Portland (SY6768); 20 Aug (B F Skinner). SY67/6870 Isle of Portland (SY6870); 02 Jul; 10 Jul; 11 Jul; 12 Jul; 13 Jul; 20 Jul; 26 Jul; 27 Jul; 28 Jul; 29 Jul; 31 Jul; 02 Aug; 12 Aug; 13 Aug (D Saunders). SY67/MT 0002 Weymouth (SY6676); 13 Jul; 05 Aug; 01 Sep (D Foot). SY67/MT 0005 Portland (SY6871); 22 Jul (J Williamson). SY67/MT 0006 Weymouth (SY6778); 16 Jul (J Oughton). SY88/8387 East Burton (SY8387); 11 Jul (M Greenland). SZ07/0377 Durlston Country Park (SZ0377); 31 Jul; 01 Aug; 3 on 03 Aug; 11 Jun; 15 Jun; 04 Jul; 4 on 06

Jul; 5 on 11 Jul; 23 Jul; 4 on 27 Jul; 31 Jul; 01 Aug; 2 on 02 Aug; 2 on 27 Jul (D C G Brown). SZ07/MT 0002 Swanage (SZ0278); 23 Jul (P England).

73.341 *Standfussiana lucerneae* (Linnaeus, 1758) **NORTHERN RUSTIC** Local

Recorded in: SY67. SY67/6970 Isle of Portland (SY6970); 03 Jun (M J Hammond). SY67/MT 0001 Weymouth (SY6679); 26 Jul (P H Sterling). SY67/MT 0002 Weymouth (SY6676); 13 Jul; 19 Jul; 24 Jul; 25 Jul; 02 Aug (D Foot).

74.012 *Earias insulana* (Boisduval, 1833) **EGYPTIAN BOLLWORM** Import

Recorded in: SY66. SY66/MT 0001 Portland (SY6868); 08 Oct (M Cade).

## Recorders

Records were gratefully received from the following 370 recorders: A Ballard; A Bartlett; A Best; A Bradley; A Bryant; A Clarke; A Coffen; A Goodall; A Graham; A Green; A H Bicker; A Hancox; A Heathershaw; A House; A Jefferis; A Mumford; A Nicholls; A Page; A R Wright; A Rose; A Rosenthal; A Rouse; A Steele; A Stewart; A Thorne; A Wallis; A Willis; B Bailey; B Bewsher; B Blair; B D D Young; B Edwards; B Elliott; B F Skinner; B Gallagher; B Martin; B Milne; C Baddiley; C Beth; C Booth; C Byrne; C Gaze; C Hollingum; C Holtby; C Hornby; C Iles; C Jones; C Kelly; C Lynn; C Marsh; C Peters; C Pinder; C R Burningham; C Raper; C Rogers; C Scott-Morley; C Shierson; C Smith; C Steele; C Thain; C Walton; C Wisbey; Clifford Hall; D Anderson; D Bartlett; D Berrey; D Brown; D C G Brown; D Couzens; D Dodge; D Edwards; D Emblem; D Emery; D Foot; D Gardner; D Gould; D Hall; D J Evans; D Kingman; D Lee; D Levy; D Pegg; D Pendall; D Raper; D Redwood; D Roy; D Saunders; D Scadding; D Smith; D Stoker; D Thompson; D Tomlinson; D Walbridge; D Whalley; D Wilson; Dee Blake; Dorset Mushroom Hunters; E Grinsted; E Jennings; E Kenyon; E Levy; E Phillips; E S Rose; E Taylor; E Thompson; F Atkin; F Cox; F Linford; F Ollett; G Balcikonis; G Carr; G Davies; G Dennis; G Finch; G Freeman; G Herring; G Laing; G Linton; G Masters; G Prall; G R Hopkins; G Roberts; G Sell; G Thompson; H C R Wheatcroft; H Charlesworth; H Chown; H G Wood Homer; H Whittle; I C Cross; I Clarke; I Davenport; I Ingrey-Counter; J A Newbould; J Adams; J Armstrong; J Baker; J Bellamy; J Burge; J C Winterbottom; J Campbell; J Chainey; J Cox; J Craig; J D McMillan; J Dias; J E Down; J Fradgley; J Francis; J Gale; J Gibson; J Gilbert; J H S Cox; J Hall; J Hill; J Hollingdale; J Hunt; J Jones; J Kingman; J M Elliott; J Mannerings; J Mellings; J Oughton; J Peters; J Ponde; J Rowe; J Rowley; J Seawright; J Southworth; J Templeton; J van Breda; J W Wescombe; J Weaver; J Westgate; J White; J Williamson; J Wright; J Wyatt; J Yorke; K H Hodder; K Hillman; K Howland; K Kerr; K Mascarenas; K Rideout; K Tailby; K Wells; K Woodward; L Butt; L Christey-Clover; L Clarke; L de Whalley; L Delve; L J Hill; L Phillips; L Smith; L Southall; L Wakelin; M Bennett; M Botham; M Brice; M Brookbanks; M Burwood; M Cade; M Civil; M Coffin; M E Frost; M E Hammond; M Fisher; M Greenland; M Hemingway; M Hetherington; M Hounsell; M J Deans; M J Hammond; M J Sterling; M Jeffes; M Jones; M Kelsey; M Kerr; M Lawlor; M Ouseley; M Peters; M Pike; M Plaxton; M Potter; M Pound; M Price; M Putt; M Raper; M Riddy; M S Parsons; M S Warren; M Sartin; M Simpson; M Storey; M Tewkesbury; M Tuck; M Watson; M Weston; M Wragg; Mrs Riggs; N Bergin; N Bicker; N Bourn; N Dalton; N Davidson; N Gibson; N Hesketh-Roberts; N Howell; N Isaac; N Ngo; N Sherman; N Smart; N Spring; N Tuck; O Seymour; P Bruce-Jones; P Budd; P Clarke; P Delve; P Dinwoodie; P East; P England; P Fenwick; P Grey; P H Sterling; P Harris; P Hatherley; P Holloway; P Lear; P Newland; P Orchard; P Parr; P Stevens; P Taylor; P Wakely; P Ward; P Wood; R Blake; R Carpenter; R Coles; R Comont; R Cottle; R Cox; R Czapski; R Eden; R Eggelton; R Fox; R George; R Gibson; R Harley; R Hayward; R Hilton; R Horn; R Hughes; R Jenner; R Keynes; R Lambert; R Lear; R Lewington; R Meech; R Moorsom; R Murphy; R Nesbit; R Nowak; R Pontin; R R Cook; R Smith; R Terry; R W Adams; R W Steedman; R Wheeler; S Anderson; S Archdale; S Brading; S Breeze; S Buckley; S Childs; S Ellis; S Franklin; S Gonzalez; S Graham; S Gregory; S H Hind; S Holmes; S J Breeze; S J Hartstone; S James; S Jenkins; S Jones; S M Garrett; S Marks; S Maskell; S

Masters; S Milner; S Oliver; S Peek; S Phelps; S Philp; S Saunders; S Styles; S W Smith; S Wakeham; S Webb; S Whitehouse; T A Box; T Brereton; T Chapman; T Dunne; T Hutton; T J Clarke; T J Hill; T Morgan; T Morris; T Walsh; Trackton; V Bailey; V Bhattacharjee; V Giavarini; V L Hughes; W Cave; W Copperthwaite; W G Shreeves; W Raymond; W Stevens; W T Franklin; Z Caals; Z Mahon & Z Randle.

My apologies if anyone has been omitted from this list.

### **References**

Agassiz, D.J.L., Beavan, S.D. & Heckford, R.J. 2013. *A checklist of the Lepidoptera of the British Isles*. Field Studies Council.