

DORSET MACRO-MOTHS 2012

COUNTY MACRO-MOTH RECORDER'S REPORT

LESLIE J. EVANS-HILL FRES

Butterfly Conservation, Manor Yard, East Lulworth, Dorset BH20 5QP

E-mail: levans-hill@butterfly-conservation.org

Abstract

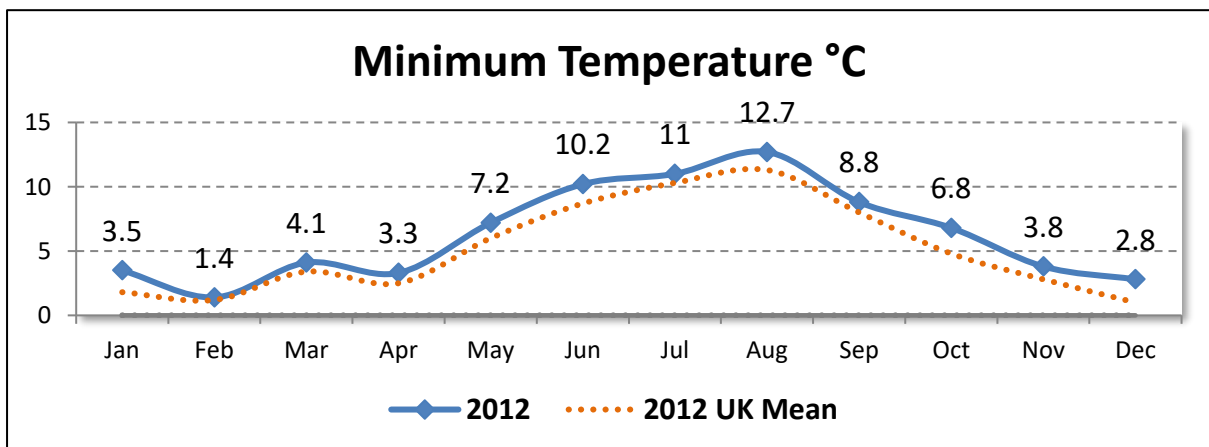
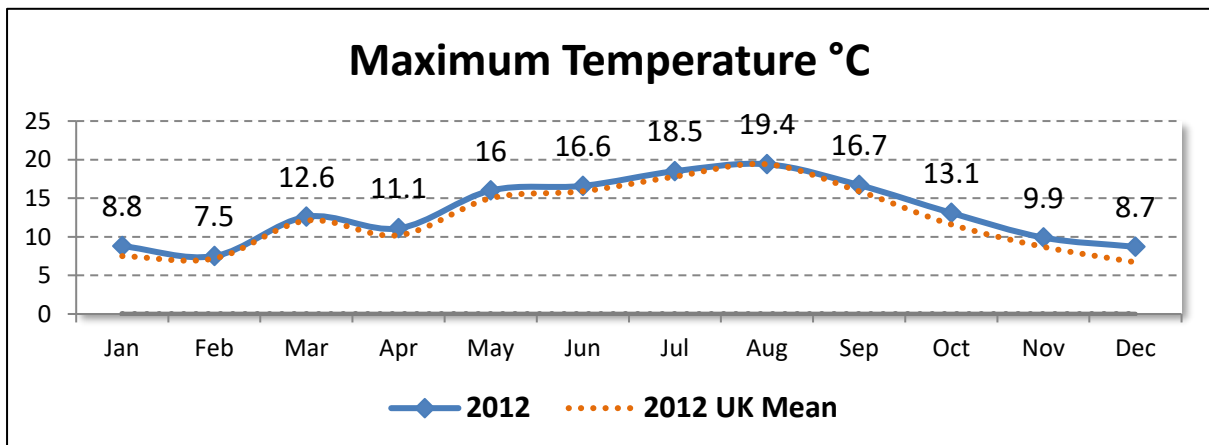
Presented here are data pertaining to submitted records of local macro-moth records of interest during the year 2012 in Dorset administrative and vice-county (9). Errors & omissions expected.

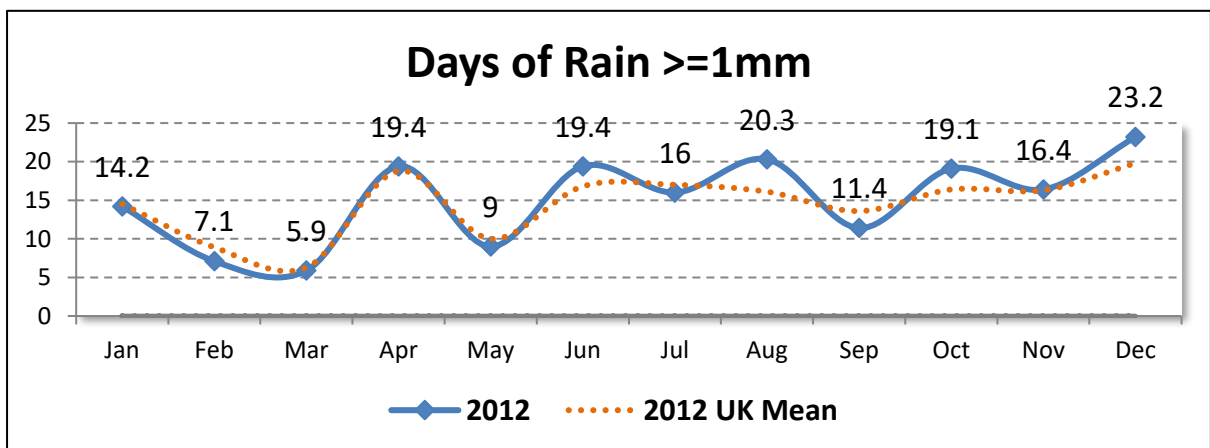
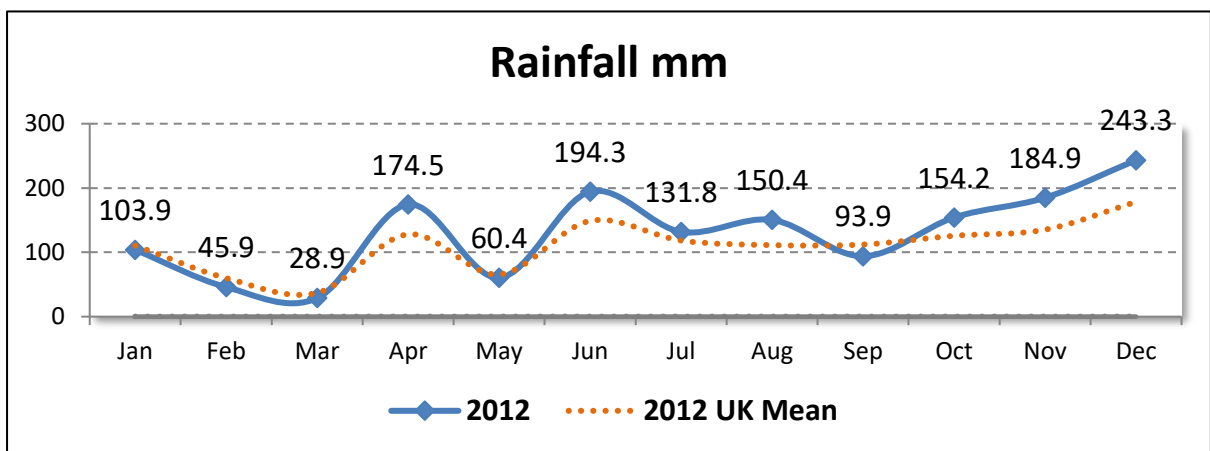
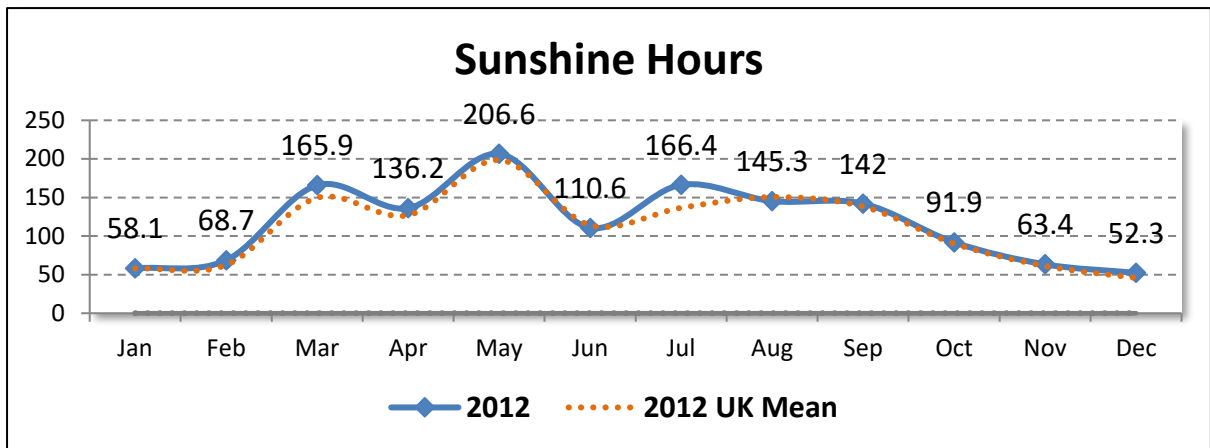
Records and Species per Year

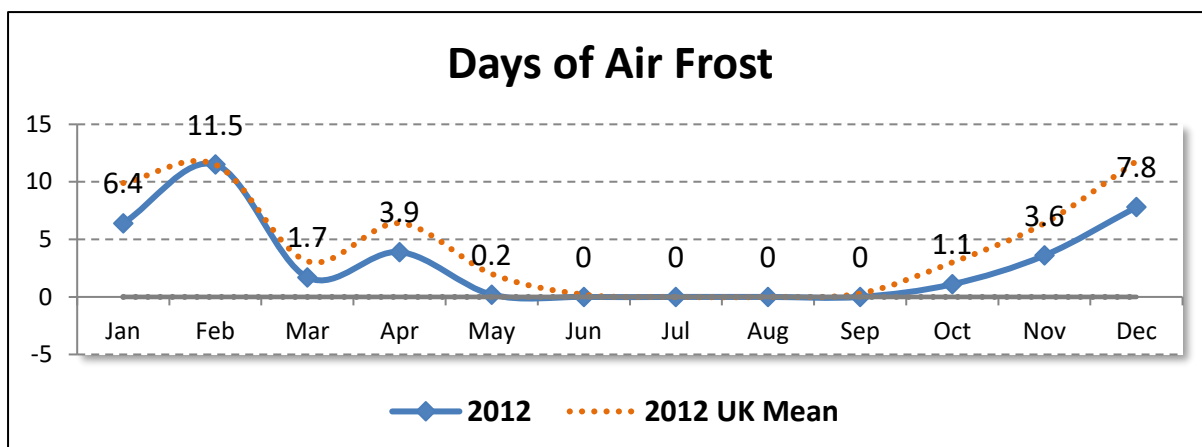
<i>Year</i>	<i>Records</i>	<i>Species</i>
2012	46,994	521

Weather

All data are © Crown Copyright. UK Met Office.







New to Dorset

One species is confirmed new to Dorset during 2012:

- *Pseudeustrotia candidula* ([Denis & Schiffermüller], 1775) **SHINING MARBLED** from Tytherleigh (ST3103); 1 Adult on 18 Aug 2012 by A Jenkins.

Species per 10km

All life stages – Unverified records and records where there is doubt are excluded.

<i>10km</i>	<i>Species</i>	<i>10km</i>	<i>Species</i>	<i>10km</i>	<i>Species</i>
ST20	0	ST91	69	SY77	20
ST30	86	SU00	182	SY78	260
ST40	198	SU01	166	SY79	350
ST50	1	SU02	0	SY87	4
ST51	0	SU10	0	SY88	317
ST60	97	SU11	256	SY89	224
ST61	211	SY39	279	SY97	117
ST70	79	SY48	10	SY98	267
ST71	94	SY49	231	SY99	194
ST72	129	SY58	134	SZ07	233
ST73	87	SY59	108	SZ08	98
ST80	231	SY66	59	SZ09	279
ST81	16	SY67	277		
ST82	47	SY68	231		
ST90	52	SY69	123		

2012 Summary

All figures are for adults. Records with vague dates are excluded; however, unverified records are included. For species that overwinter as adults or emerge the year prior, the earliest and latest dates are unavailable.

Code	Taxon	Vernacular	Records	Individuals	Earliest	Latest
	<i>Acronicta tridens/psi</i>	DARK DAGGER / GREY DAGGER	77	85	21 May	06 Oct
	<i>Amphipoea oculea</i> agg.	EAR MOTH AGG.	25	35	20 Jul	02 Sep
	<i>Amphipyra pyramidea</i> agg.	COPPER UNDERWING AGG.	43	50	26 Jul	15 Oct
	<i>Epirrita dilutata</i> agg.	NOVEMBER MOTH AGG.	36	65	15 Oct	20 Nov
	<i>Euxoa tritici/obelisca</i>	WHITE-LINE DART/SQUARE-SPOT DART	17	62	29 Jul	20 Sep
	<i>Hoplodrina octogenaria/blanda</i>	UNCERTAIN/RUSTIC AGG.	722	2379	02 Jun	15 Oct
	<i>Mesapamea secalis</i> agg.	COMMON RUSTIC AGG.	253	656	26 May	16 Sep
	<i>Oligia strigilis</i> agg.	MARbled MINOR AGG.	161	310	20 May	13 Aug
3.001	<i>Triodia sylvina</i>	ORANGE SWIFT	88	134	06 Aug	13 Sep
3.002	<i>Korscheltellus lupulina</i>	COMMON SWIFT	202	698	02 May	27 Jul
3.004	<i>Phymatopus hecta</i>	GOLD SWIFT	2	21	02 Jun	01 Jul
3.005	<i>Hepialus humuli</i>	GHOST MOTH	44	53	31 May	25 Aug
50.001	<i>Cossus cossus</i>	GOAT MOTH	1	1	22 Aug	22 Aug
50.002	<i>Zeuzera pyrina</i>	LEOPARD MOTH	10	10	13 Jul	23 Aug
53.001	<i>Apoda limacodes</i>	FESTOON	20	25	30 May	08 Aug
54.002	<i>Adscita statices</i>	FORESTER	13	29	09 Jun	21 Jul
54.008	<i>Zygaena filipendulae</i>	SIX-SPOT BURNET	41	125	17 Jun	20 Aug
54.009	<i>Zygaena lonicerae</i>	NARROW-BORDERED FIVE-SPOT BURNET	25	159	20 Jun	26 Jul
54.010	<i>Zygaena trifolii</i>	FIVE-SPOT BURNET	6	213	09 Jun	10 Aug
65.001	<i>Falcaria lacertinaria</i>	SCALLOPED HOOK-TIP	66	80	13 Apr	24 Aug
65.002	<i>Watsonalla binaria</i>	OAK HOOK-TIP	38	44	18 May	03 Sep
65.003	<i>Watsonalla cultraria</i>	BARRED HOOK-TIP	1	1	14 Aug	14 Aug
65.005	<i>Drepana falcataria</i>	PEBBLE HOOK-TIP	129	179	19 May	28 Aug
65.007	<i>Cilix glaucata</i>	CHINESE CHARACTER	174	247	12 Apr	16 Sep
65.008	<i>Thyatira batis</i>	PEACH BLOSSOM	39	44	24 May	24 Aug

<i>Code</i>	<i>Taxon</i>	<i>Vernacular</i>	<i>Records</i>	<i>Individuals</i>	<i>Earliest</i>	<i>Latest</i>
65.009	<i>Habrosyne pyritoides</i>	BUFF ARCHES	214	290	31 May	17 Aug
65.010	<i>Tethea ocularis</i>	FIGURE OF EIGHTY	28	32	25 May	23 Jul
65.013	<i>Ochropacha duplaris</i>	COMMON LUTESTRING	4	5	09 Jul	18 Jul
65.014	<i>Cymatophorina diluta</i>	OAK LUTESTRING	2	4	20 Aug	07 Sep
65.015	<i>Polyploca ridens</i>	FROSTED GREEN	11	11	27 Mar	23 May
65.016	<i>Achlya flavicornis</i>	YELLOW HORNED	20	25	28 Feb	28 Mar
66.001	<i>Poecilocampa populi</i>	DECEMBER MOTH	53	114	Unavailable	Unavailable
66.002	<i>Trichiura crataegi</i>	PALE EGGAR	23	34	27 Aug	18 Sep
66.003	<i>Malacosoma neustria</i>	LACKEY	136	302	21 Jun	03 Sep
66.005	<i>Eriogaster lanestris</i>	SMALL EGGAR	7	8	23 Mar	30 Mar
66.006	<i>Lasiocampa trifolii</i>	GRASS EGGAR	2	5	14 Aug	17 Aug
66.007	<i>Lasiocampa quercus</i>	OAK EGGAR	28	30	26 Jul	12 Sep
66.008	<i>Macrothylacia rubi</i>	FOX MOTH	20	20	02 May	30 Jun
66.010	<i>Euthrix potatoria</i>	DRINKER	146	209	18 Jun	22 Aug
66.012	<i>Gastropacha quercifolia</i>	LAPPET	3	3	18 Jul	01 Aug
69.001	<i>Mimas tiliae</i>	LIME HAWK-MOTH	18	18	09 May	04 Jul
69.002	<i>Smerinthus ocellata</i>	EYED HAWK-MOTH	67	71	11 May	24 Jul
69.003	<i>Laothoe populi</i>	POPLAR HAWK-MOTH	355	442	08 May	04 Sep
69.004	<i>Agrius convolvuli</i>	CONVOLVULUS HAWK-MOTH	23	23	18 Aug	17 Oct
69.006	<i>Sphinx ligustri</i>	PRIVET HAWK-MOTH	117	209	23 May	06 Aug
69.007	<i>Sphinx pinastri</i>	PINE HAWK-MOTH	40	47	19 May	08 Sep
69.009	<i>Hemaris fuciformis</i>	BROAD-BORDERED BEE HAWK-MOTH	1	1	09 Jul	09 Jul
69.010	<i>Macroglossum stellatarum</i>	HUMMING-BIRD HAWK-MOTH	80	120	10 Jan	23 Dec
69.014	<i>Hyles gallii</i>	BEDSTRAW HAWK-MOTH	1	1	26 Jul	26 Jul
69.015	<i>Hyles livornica</i>	STRIPED HAWK-MOTH	1	1	26 Jun	26 Jun
69.016	<i>Deilephila elpenor</i>	ELEPHANT HAWK-MOTH	321	508	30 May	08 Sep
69.017	<i>Deilephila porcellus</i>	SMALL ELEPHANT HAWK-MOTH	98	150	18 May	26 Jul
70.002	<i>Idaea muricata</i>	PURPLE-BORDERED GOLD	1	2	10 Jul	10 Jul
70.004	<i>Idaea rusticata</i>	LEAST CARPET	2	2	23 Jul	25 Jul

<i>Code</i>	<i>Taxon</i>	<i>Vernacular</i>	<i>Records</i>	<i>Individuals</i>	<i>Earliest</i>	<i>Latest</i>
70.006	<i>Idaea fuscovenosa</i>	DWARF CREAM WAVE	29	34	20 May	12 Aug
70.008	<i>Idaea seriata</i>	SMALL DUSTY WAVE	34	45	24 May	16 Sep
70.009	<i>Idaea subsericeata</i>	SATIN WAVE	16	16	24 May	01 Sep
70.010	<i>Idaea sylvestraria</i>	DOTTED BORDER WAVE	1	1	25 Jul	25 Jul
70.011	<i>Idaea dimidiata</i>	SINGLE-DOTTED WAVE	242	341	25 Jun	28 Sep
70.012	<i>Idaea trigeminata</i>	TREBLE BROWN SPOT	38	46	25 May	27 Jul
70.013	<i>Idaea biselata</i>	SMALL FAN-FOOTED WAVE	286	475	22 Jun	03 Sep
70.015	<i>Idaea emarginata</i>	SMALL SCALLOP	2	2	26 Jul	29 Jul
70.016	<i>Idaea aversata</i>	RIBAND WAVE	633	1765	24 May	09 Sep
70.017	<i>Idaea degeneraria</i>	PORTLAND RIBBON WAVE	4	4	10 Jun	15 Sep
70.018	<i>Idaea straminata</i>	PLAIN WAVE	10	13	27 Jun	12 Aug
70.023	<i>Scopula marginepunctata</i>	MULLEIN WAVE	49	56	24 May	20 Sep
70.024	<i>Scopula imitaria</i>	SMALL BLOOD-VEIN	62	68	27 Jun	02 Sep
70.025	<i>Scopula immutata</i>	LESSER CREAM WAVE	3	3	08 Jul	25 Jul
70.027	<i>Scopula floslactata</i>	CREAM WAVE	16	24	24 May	26 Jun
70.029	<i>Timandra comae</i>	BLOOD-VEIN	129	156	21 May	21 Sep
70.031	<i>Cyclophora annularia</i>	MOCHA	8	9	23 May	28 Aug
70.032	<i>Cyclophora albipunctata</i>	BIRCH MOCHA	13	13	21 May	31 Aug
70.033	<i>Cyclophora pupillaria</i>	BLAIR'S MOCHA	2	2	28 Aug	05 Sep
70.034	<i>Cyclophora ruficiliaria</i>	JERSEY MOCHA	6	7	12 Aug	31 Aug
70.036	<i>Cyclophora punctaria</i>	MAIDEN'S BLUSH	65	84	30 Apr	16 Sep
70.037	<i>Cyclophora linearia</i>	CLAY TRIPLE-LINES	25	30	24 May	04 Sep
70.038	<i>Rhodometra sacraria</i>	VESTAL	16	21	26 Jun	17 Nov
70.041	<i>Scotopteryx luridata</i>	JULY BELLE	4	4	13 Jul	13 Aug
70.043	<i>Scotopteryx bipunctaria</i>	CHALK CARPET	34	63	26 May	03 Sep
70.045	<i>Scotopteryx chenopodiata</i>	SHADED BROAD-BAR	33	53	26 Jul	07 Sep
70.046	<i>Orthonama vittata</i>	OBLIQUE CARPET	2	2	23 Aug	05 Sep
70.047	<i>Nycterosea obstipata</i>	GEM	20	22	10 May	25 Nov
70.049	<i>Xanthorhoe fluctuata</i>	GARDEN CARPET	381	529	02 May	25 Oct

<i>Code</i>	<i>Taxon</i>	<i>Vernacular</i>	<i>Records</i>	<i>Individuals</i>	<i>Earliest</i>	<i>Latest</i>
70.051	<i>Xanthorhoe spadicearia</i>	RED TWIN-SPOT CARPET	262	376	30 Apr	05 Sep
70.053	<i>Xanthorhoe designata</i>	FLAME CARPET	47	52	18 May	07 Sep
70.054	<i>Xanthorhoe montanata</i>	SILVER-GROUND CARPET	109	156	19 May	11 Aug
70.057	<i>Catarhoe rubidata</i>	RUDDY CARPET	3	12	21 Jun	17 Jul
70.059	<i>Camptogramma bilineata</i>	YELLOW SHELL	79	88	13 Jun	16 Sep
70.061	<i>Epirrhoe alternata</i>	COMMON CARPET	287	417	02 May	02 Oct
70.062	<i>Epirrhoe rivata</i>	WOOD CARPET	16	37	01 Jun	23 Aug
70.063	<i>Epirrhoe galiata</i>	GALIUM CARPET	14	15	28 May	06 Sep
70.064	<i>Euphyia biangulata</i>	CLOAKED CARPET	3	3	10 Jul	09 Aug
70.065	<i>Euphyia unangulata</i>	SHARP-ANGLED CARPET	10	10	31 May	23 Aug
70.066	<i>Earophila badiata</i>	SHOULDER STRIPE	21	47	27 Feb	30 May
70.067	<i>Anticlea derivata</i>	STREAMER	21	23	24 Mar	27 May
70.069	<i>Pelurga comitata</i>	DARK SPINACH	11	12	25 Jul	13 Sep
70.070	<i>Larentia clavaria</i>	MALLOW	7	10	05 Oct	23 Oct
70.074	<i>Hydriomena furcata</i>	JULY HIGHFLYER	107	175	28 Jun	24 Aug
70.075	<i>Hydriomena impluviata</i>	MAY HIGHFLYER	14	20	22 May	04 Jul
70.077	<i>Pennithera firmata</i>	PINE CARPET	114	160	23 May	17 Nov
70.079	<i>Thera britannica</i>	SPRUCE CARPET	158	317	20 Mar	20 Nov
70.081	<i>Thera obeliscata</i>	GREY PINE CARPET	140	242	06 Apr	21 Nov
70.082	<i>Thera juniperata</i>	JUNIPER CARPET	3	3	12 Nov	17 Nov
70.083	<i>Thera cupressata</i>	CYPRESS CARPET	61	71	25 May	17 Nov
70.084	<i>Plemyria rubiginata</i>	BLUE-BORDERED CARPET	13	13	05 Jul	28 Jul
70.085	<i>Cidaria fulvata</i>	BARRED YELLOW	37	39	18 Jun	23 Jul
70.086	<i>Electrophaes corylata</i>	BROKEN-BARRED CARPET	33	40	19 May	19 Jun
70.087	<i>Cosmorhoe ocellata</i>	PURPLE BAR	39	40	21 May	11 Sep
70.089	<i>Eulithis prunata</i>	PHOENIX	43	52	26 May	20 Aug
70.090	<i>Eulithis testata</i>	CHEVRON	4	4	22 Jul	17 Aug
70.092	<i>Eulithis mellinata</i>	SPINACH	2	2	05 Jul	31 Jul
70.093	<i>Gandaritis pyrallata</i>	BARRED STRAW	94	128	20 Jun	08 Aug

<i>Code</i>	<i>Taxon</i>	<i>Vernacular</i>	<i>Records</i>	<i>Individuals</i>	<i>Earliest</i>	<i>Latest</i>
70.094	<i>Ecliptopera silaceata</i>	SMALL PHOENIX	72	87	02 May	09 Sep
70.095	<i>Chloroclysta siterata</i>	RED-GREEN CARPET	110	189	Unavailable	Unavailable
70.097	<i>Dysstroma truncata</i>	COMMON MARBLED CARPET	538	1050	07 Apr	26 Nov
70.098	<i>Dysstroma citrata</i>	DARK MARBLED CARPET	3	3	23 Oct	23 Oct
70.100	<i>Colostygia pectinataria</i>	GREEN CARPET	328	713	28 Apr	08 Oct
70.101	<i>Colostygia multistrigaria</i>	MOTTLED GREY	11	17	08 Jan	31 Mar
70.103	<i>Lampropteryx suffumata</i>	WATER CARPET	10	20	27 Mar	28 May
70.104	<i>Lampropteryx otrigiata</i>	DEVON CARPET	1	2	06 Jun	06 Jun
70.106	<i>Operophtera brumata</i>	WINTER MOTH	46	113	Unavailable	Unavailable
70.107	<i>Epirrita dilutata</i>	NOVEMBER MOTH	11	35	18 Oct	16 Nov
70.108	<i>Epirrita christyi</i>	PALE NOVEMBER MOTH	3	3	23 Oct	23 Oct
70.109	<i>Epirrita autumnata</i>	AUTUMNAL MOTH	5	10	22 Oct	16 Nov
70.111	<i>Asthena albulata</i>	SMALL WHITE WAVE	10	13	11 May	25 Jul
70.112	<i>Euchoeca nebulata</i>	DINGY SHELL	3	3	13 Jul	24 Jul
70.114	<i>Hydrelia flammeolaria</i>	SMALL YELLOW WAVE	33	36	25 Jun	08 Aug
70.117	<i>Minoa murinata</i>	DRAB LOOPER	1	2	22 May	22 May
70.118	<i>Philereme vetulata</i>	BROWN SCALLOP	2	2	24 Jul	26 Jul
70.119	<i>Philereme transversata</i>	DARK UMBER	4	4	17 Jul	19 Aug
70.121	<i>Rheumaptera undulata</i>	SCALLOP SHELL	16	16	25 Jun	13 Aug
70.123	<i>Triphosa dubitata</i>	TISSUE	1	1	27 Jul	27 Jul
70.126	<i>Horisme vitalbata</i>	SMALL WAVED UMBER	56	77	18 May	27 Aug
70.127	<i>Horisme tersata</i>	FERN	12	13	21 Jun	26 Jul
70.128	<i>Melanthia procellata</i>	PRETTY CHALK CARPET	19	20	24 May	09 Sep
70.132	<i>Perizoma affinitata</i>	RIVULET	43	50	21 May	20 Aug
70.133	<i>Perizoma alchemillata</i>	SMALL RIVULET	100	118	26 May	04 Sep
70.134	<i>Perizoma bifaciata</i>	BARRED RIVULET	4	5	30 Jul	20 Aug
70.137	<i>Perizoma albulata</i>	GRASS RIVULET	3	3	22 May	09 Jun
70.138	<i>Perizoma flavofasciata</i>	SANDY CARPET	39	40	23 May	24 Aug
70.141	<i>Gymnoscelis rufifasciata</i>	DOUBLE-STRIPED PUG	470	771	17 Jan	16 Nov

<i>Code</i>	<i>Taxon</i>	<i>Vernacular</i>	<i>Records</i>	<i>Individuals</i>	<i>Earliest</i>	<i>Latest</i>
70.142	<i>Chloroclystis v-ata</i>	V-PUG	90	106	07 Apr	03 Sep
70.143	<i>Pasiphila chloerata</i>	SLOE PUG	5	6	02 Jun	29 Jun
70.144	<i>Pasiphila rectangulata</i>	GREEN PUG	94	115	23 May	24 Aug
70.146	<i>Eupithecia haworthiata</i>	HAWORTH'S PUG	16	16	22 Jun	20 Aug
70.147	<i>Eupithecia tenuiata</i>	SLENDER PUG	2	2	14 Jul	26 Jul
70.148	<i>Eupithecia inturbata</i>	MAPLE PUG	18	26	22 Jul	17 Aug
70.150	<i>Eupithecia linariata</i>	TOADFLAX PUG	2	2	25 Jul	09 Aug
70.151	<i>Eupithecia pulchellata</i>	FOXGLOVE PUG	30	30	18 May	22 Aug
70.156	<i>Eupithecia abbreviata</i>	BRINDLED PUG	72	158	27 Feb	23 Jun
70.157	<i>Eupithecia dodoneata</i>	OAK-TREE PUG	36	58	26 Apr	02 Jun
70.159	<i>Eupithecia phoeniceata</i>	CYPRESS PUG	38	59	26 May	21 Sep
70.160	<i>Eupithecia tripunctaria</i>	WHITE-SPOTTED PUG	28	31	18 May	17 Sep
70.162	<i>Eupithecia tantillaria</i>	DWARF PUG	2	4	24 May	24 May
70.163	<i>Eupithecia lariciata</i>	LARCH PUG	4	4	29 May	10 Jul
70.166	<i>Eupithecia simpliciatata</i>	PLAIN PUG	5	5	23 Jul	20 Aug
70.168	<i>Eupithecia nanata</i>	NARROW-WINGED PUG	70	244	27 Apr	03 Sep
70.169	<i>Eupithecia innotata</i>	ANGLE-BARRED PUG	4	4	29 May	01 Sep
70.171	<i>Eupithecia indigata</i>	OCHREOUS PUG	4	4	23 May	08 Jun
70.172	<i>Eupithecia distinctaria</i>	THYME PUG	1	1	01 Jun	01 Jun
70.173	<i>Eupithecia centaureata</i>	LIME-SPECK PUG	87	96	08 May	19 Sep
70.176	<i>Eupithecia intricata</i>	FREYER'S PUG	19	29	24 May	28 Jun
70.177	<i>Eupithecia satyrata</i>	SATYR PUG	1	1	23 May	23 May
70.179	<i>Eupithecia absinthiata</i>	WORMWOOD PUG	38	39	09 Jun	01 Sep
70.181	<i>Eupithecia valerianata</i>	VALERIAN PUG	3	3	20 May	24 May
70.182	<i>Eupithecia assimilata</i>	CURRENT PUG	28	29	20 May	02 Sep
70.183	<i>Eupithecia vulgata</i>	COMMON PUG	182	298	28 Mar	07 Sep
70.184	<i>Eupithecia exigua</i>	MOTTLED PUG	44	53	25 Apr	31 Jul
70.187	<i>Eupithecia icterata</i>	TAWNY SPECKLED PUG	11	11	26 Jul	21 Aug
70.188	<i>Eupithecia succenturiata</i>	BORDERED PUG	1	1	15 Jul	15 Jul

<i>Code</i>	<i>Taxon</i>	<i>Vernacular</i>	<i>Records</i>	<i>Individuals</i>	<i>Earliest</i>	<i>Latest</i>
70.189	<i>Eupithecia subumbrata</i>	SHADED PUG	1	1	17 Jun	17 Jun
70.190	<i>Eupithecia subfuscata</i>	GREY PUG	33	34	22 May	12 Aug
70.192	<i>Aplocera plagiata</i>	TREBLE-BAR	18	28	16 May	16 Sep
70.193	<i>Aplocera efformata</i>	LESSER TREBLE-BAR	1	1	03 Sep	03 Sep
70.195	<i>Chesias legatella</i>	STREAK	2	2	23 Oct	24 Oct
70.198	<i>Lobophora halterata</i>	SERAPHIM	7	8	22 May	26 Jul
70.199	<i>Pterapherapteryx sexalata</i>	SMALL SERAPHIM	20	25	27 Apr	22 Aug
70.200	<i>Acasis viretata</i>	YELLOW-BARRED BRINDLE	90	104	29 Mar	23 Sep
70.201	<i>Trichopteryx polycommata</i>	BARRED TOOTH-STRIPED	1	5	23 Mar	23 Mar
70.202	<i>Trichopteryx carpinata</i>	EARLY TOOTH-STRIPED	18	25	22 Mar	25 May
70.203	<i>Archiearis parthenias</i>	ORANGE UNDERWING	3	3	30 Mar	30 Mar
70.205	<i>Abraxas grossulariata</i>	MAGPIE MOTH	246	500	17 Jun	27 Sep
70.207	<i>Lomaspilis marginata</i>	CLOUDED BORDER	188	292	23 May	03 Sep
70.208	<i>Ligdia adustata</i>	SCORCHED CARPET	28	29	22 Mar	28 Aug
70.212	<i>Macaria alternata</i>	SHARP-ANGLED PEACOCK	121	160	10 May	28 Aug
70.214	<i>Macaria liturata</i>	TAWNY-BARRED ANGLE	63	96	22 May	15 Sep
70.218	<i>Chiasmia clathrata</i>	LATTICED HEATH	7	11	12 Aug	20 Aug
70.221	<i>Cepphis advenaria</i>	LITTLE THORN	8	9	21 May	20 Jun
70.222	<i>Petrophora chlorosata</i>	BROWN SILVER-LINE	48	72	12 May	25 Jul
70.224	<i>Plagodis dolabraria</i>	SCORCHED WING	56	86	24 May	25 Jul
70.225	<i>Pachycnemia hippocastanaria</i>	HORSE CHESTNUT	28	54	14 Mar	22 Oct
70.226	<i>Opisthograptis luteolata</i>	BRIMSTONE MOTH	913	2202	24 Mar	16 Nov
70.227	<i>Epione repandaria</i>	BORDERED BEAUTY	29	29	13 Jul	22 Sep
70.229	<i>Pseudopanthera macularia</i>	SPECKLED YELLOW	2	3	09 Jun	19 Jun
70.231	<i>Apeira syringaria</i>	LILAC BEAUTY	32	36	17 Jun	30 Jul
70.233	<i>Ennomos quercinaria</i>	AUGUST THORN	17	20	03 Aug	04 Sep
70.234	<i>Ennomos alniaria</i>	CANARY-SHOULDERED THORN	111	145	26 Jul	06 Oct
70.235	<i>Ennomos fuscantaria</i>	DUSKY THORN	56	67	16 Aug	08 Oct
70.236	<i>Ennomos erosaria</i>	SEPTEMBER THORN	15	24	20 Jul	08 Oct

<i>Code</i>	<i>Taxon</i>	<i>Vernacular</i>	<i>Records</i>	<i>Individuals</i>	<i>Earliest</i>	<i>Latest</i>
70.237	<i>Selenia dentaria</i>	EARLY THORN	410	611	08 Jan	03 Sep
70.239	<i>Selenia tetralunaria</i>	PURPLE THORN	72	76	26 Mar	17 Aug
70.240	<i>Odontopera bidentata</i>	SCALLOPED HAZEL	76	97	19 May	24 Jun
70.241	<i>Crocallis elinguaris</i>	SCALLOPED OAK	280	448	20 Jun	28 Aug
70.243	<i>Ourapteryx sambucaria</i>	SWALLOW-TAILED MOTH	123	166	22 Jun	02 Oct
70.244	<i>Colotois pennaria</i>	FEATHERED THORN	58	141	20 Oct	09 Dec
70.245	<i>Alsophila aescularia</i>	MARCH MOTH	73	140	23 Feb	13 Apr
70.246	<i>Apocheima hispidaria</i>	SMALL BRINDLED BEAUTY	8	8	23 Feb	23 Mar
70.247	<i>Phigalia pilosaria</i>	PALE BRINDLED BEAUTY	52	133	06 Jan	22 Mar
70.248	<i>Lycia hirtaria</i>	BRINDLED BEAUTY	33	40	10 Mar	09 Jun
70.251	<i>Biston strataria</i>	OAK BEAUTY	131	234	15 Feb	24 Apr
70.252	<i>Biston betularia</i>	PEPPERED MOTH	301	428	08 May	02 Sep
70.253	<i>Agriopis leucophaearia</i>	SPRING USHER	34	71	18 Jan	02 Mar
70.254	<i>Agriopis aurantiaria</i>	SCARCE UMBER	1	1	13 Nov	13 Nov
70.255	<i>Agriopis marginaria</i>	DOTTED BORDER	93	128	25 Jan	29 Dec
70.256	<i>Erannis defoliaria</i>	MOTTLED UMBER	33	89	05 Jan	19 Nov
70.257	<i>Menophra abruptaria</i>	WAVED UMBER	46	54	29 Mar	13 Aug
70.258	<i>Peribatodes rhomboidaria</i>	WILLOW BEAUTY	768	1687	18 May	24 Oct
70.262	<i>Selidosema brunnearia</i>	BORDERED GREY	3	3	16 Aug	14 Oct
70.263	<i>Cleora cinctaria</i>	RINGED CARPET	1	1	23 May	23 May
70.264	<i>Deileptenia ribeata</i>	SATIN BEAUTY	5	5	08 Jul	23 Aug
70.265	<i>Alcis repandata</i>	MOTTLED BEAUTY	93	140	08 May	17 Sep
70.267	<i>Hypomecis roboraria</i>	GREAT OAK BEAUTY	1	5	25 Jun	25 Jun
70.268	<i>Hypomecis punctinalis</i>	PALE OAK BEAUTY	1	1	26 May	26 May
70.270	<i>Ectropis crepuscularia</i>	ENGRAILED	64	128	10 Mar	19 Oct
70.273	<i>Parectropis similaria</i>	BRINDLED WHITE-SPOT	2	5	19 Jun	22 Jun
70.275	<i>Ematurga atomaria</i>	COMMON HEATH	10	29	11 May	26 Jul
70.276	<i>Bupalus piniaria</i>	BORDERED WHITE	8	12	25 Jun	26 Jul
70.277	<i>Cabera pusaria</i>	COMMON WHITE WAVE	95	106	19 May	13 Sep

<i>Code</i>	<i>Taxon</i>	<i>Vernacular</i>	<i>Records</i>	<i>Individuals</i>	<i>Earliest</i>	<i>Latest</i>
70.278	<i>Cabera exanthemata</i>	COMMON WAVE	145	188	07 May	21 Sep
70.279	<i>Lomographa bimaculata</i>	WHITE-PINION SPOTTED	3	3	25 May	26 Jul
70.280	<i>Lomographa temerata</i>	CLOUDED SILVER	128	160	19 May	08 Aug
70.282	<i>Theria primaria</i>	EARLY MOTH	42	57	21 Jan	06 Apr
70.283	<i>Campaea margaritaria</i>	LIGHT EMERALD	262	368	26 May	24 Oct
70.284	<i>Hylaea fasciaria</i>	BARRED RED	36	48	12 Jun	20 Aug
70.287	<i>Charissa obscurata</i>	ANNULET	5	7	23 Jul	22 Aug
70.288	<i>Cleorodes lichenaria</i>	BRUSSELS LACE	219	438	03 Jun	15 Sep
70.294	<i>Aspitates ochrearia</i>	YELLOW BELLE	31	40	03 May	01 Oct
70.297	<i>Pseudoterpna pruinata</i>	GRASS EMERALD	23	37	08 Jul	22 Aug
70.299	<i>Geometra papilionaria</i>	LARGE EMERALD	15	19	30 Jun	09 Aug
70.300	<i>Comibaena bajularia</i>	BLOTCHED EMERALD	4	5	25 Jun	06 Jul
70.302	<i>Hemistola chrysoprasaria</i>	SMALL EMERALD	57	63	04 Jul	16 Sep
70.303	<i>Jodis lactearia</i>	LITTLE EMERALD	6	6	24 Jun	31 Jul
70.305	<i>Hemithea aestivaria</i>	COMMON EMERALD	131	199	25 Jun	03 Sep
71.003	<i>Cerura vinula</i>	PUSS MOTH	28	31	07 Apr	23 Jun
71.005	<i>Furcula furcula</i>	SALLOW KITTEN	61	88	02 May	23 Aug
71.006	<i>Furcula bicuspis</i>	ALDER KITTEN	2	2	24 May	28 May
71.007	<i>Furcula bifida</i>	POPLAR KITTEN	9	10	18 May	23 Aug
71.009	<i>Stauropus fagi</i>	LOBSTER MOTH	56	62	19 May	12 Aug
71.010	<i>Drymonia dodonaea</i>	MARbled BROWN	3	3	31 May	01 Jun
71.011	<i>Drymonia ruficornis</i>	LUNAR MARbled BROWN	14	16	13 Apr	24 May
71.012	<i>Notodonta dromedarius</i>	IRON PROMINENT	152	182	30 Apr	04 Sep
71.013	<i>Notodonta ziczac</i>	PEBBLE PROMINENT	152	184	24 Apr	28 Aug
71.016	<i>Peridea anceps</i>	GREAT PROMINENT	19	22	27 Mar	26 May
71.017	<i>Pheosia tremula</i>	SWALLOW PROMINENT	184	246	08 Apr	11 Sep
71.018	<i>Pheosia gnoma</i>	LESSER SWALLOW PROMINENT	166	256	13 Apr	04 Sep
71.020	<i>Pterostoma palpina</i>	PALE PROMINENT	121	135	23 Mar	27 Aug
71.021	<i>Ptilodon capucina</i>	COXCOMB PROMINENT	41	45	02 May	07 Sep

Code	Taxon	Vernacular	Records	Individuals	Earliest	Latest
71.023	<i>Odontosia carmelita</i>	SCARCE PROMINENT	2	2	01 May	02 May
71.025	<i>Phalera bucephala</i>	BUFF-TIP	272	358	18 May	02 Sep
71.027	<i>Clostera curtula</i>	CHOCOLATE-TIP	35	35	29 Mar	18 Aug
71.028	<i>Clostera pigra</i>	SMALL CHOCOLATE-TIP	1	1	18 Jul	18 Jul
72.001	<i>Scoliopteryx libatrix</i>	HERALD	46	54	Unavailable	Unavailable
72.002	<i>Rivula sericealis</i>	STRAW DOT	327	667	25 May	23 Oct
72.003	<i>Hypena proboscidalis</i>	SNOUT	627	1203	26 May	25 Oct
72.006	<i>Hypena obsitalis</i>	BLOXWORTH SNOUT	4	5	07 Apr	13 Nov
72.007	<i>Hypena crassalis</i>	BEAUTIFUL SNOUT	2	2	27 Jun	28 Jun
72.009	<i>Leucoma salicis</i>	WHITE SATIN	2	2	20 Jul	14 Aug
72.010	<i>Lymantria monacha</i>	BLACK ARCHES	117	221	25 Jul	16 Sep
72.012	<i>Euproctis chrysorrhoea</i>	BROWN-TAIL	57	122	11 Jul	26 Aug
72.013	<i>Euproctis similis</i>	YELLOW-TAIL	189	349	12 Jul	05 Sep
72.015	<i>Calliteara pudibunda</i>	PALE TUSSOCK	143	184	08 Apr	26 Jul
72.016	<i>Dicallomera fascelina</i>	DARK TUSSOCK	2	2	12 Jun	14 Jun
72.017	<i>Orgyia antiqua</i>	VAPOURER	10	10	15 Jul	08 Oct
72.019	<i>Spilosoma lutea</i>	BUFF ERMINE	661	1910	23 May	27 Sep
72.020	<i>Spilosoma lubricipeda</i>	WHITE ERMINE	273	606	27 Apr	14 Aug
72.022	<i>Diaphora mendica</i>	MUSLIN MOTH	267	679	27 Mar	29 Jul
72.023	<i>Diacrisia sannio</i>	CLOUDED BUFF	10	16	19 Jun	25 Jul
72.024	<i>Phragmatobia fuliginosa</i>	RUBY TIGER	267	464	19 May	21 Oct
72.025	<i>Parasemia plantaginis</i>	WOOD TIGER	35	94	24 May	15 Jul
72.026	<i>Arctia caja</i>	GARDEN TIGER	146	288	26 Jun	08 Sep
72.027	<i>Arctia villica</i>	CREAM-SPOT TIGER	15	15	24 May	09 Jul
72.029	<i>Callimorpha dominula</i>	SCARLET TIGER	15	17	24 May	25 Jul
72.030	<i>Euplagia quadripunctaria</i>	JERSEY TIGER	162	457	30 May	13 Sep
72.031	<i>Tyria jacobaeae</i>	CINNABAR	128	176	20 May	06 Aug
72.035	<i>Miltochrista miniata</i>	ROSY FOOTMAN	340	1034	03 Jul	13 Sep
72.036	<i>Nudaria mundana</i>	MUSLIN FOOTMAN	20	32	01 Jul	10 Aug

<i>Code</i>	<i>Taxon</i>	<i>Vernacular</i>	<i>Records</i>	<i>Individuals</i>	<i>Earliest</i>	<i>Latest</i>
72.037	<i>Thumatha senex</i>	ROUND-WINGED MUSLIN	15	29	04 Jul	17 Aug
72.038	<i>Cybosia mesomella</i>	FOUR-DOTTED FOOTMAN	15	31	18 Jun	18 Aug
72.041	<i>Lithosia quadra</i>	FOUR-SPOTTED FOOTMAN	123	444	22 Jul	22 Oct
72.042	<i>Atolmis rubricollis</i>	RED-NECKED FOOTMAN	1	1	27 Jun	27 Jun
72.043	<i>Eilema depressa</i>	BUFF FOOTMAN	122	520	05 Jul	03 Oct
72.044	<i>Eilema griseola</i>	DINGY FOOTMAN	390	1460	19 Jun	16 Sep
72.045	<i>Eilema lurideola</i>	COMMON FOOTMAN	437	2460	21 Jun	19 Sep
72.046	<i>Eilema complana</i>	SCARCE FOOTMAN	99	236	27 Jun	28 Aug
72.047	<i>Eilema caniola</i>	HOARY FOOTMAN	18	20	27 Jul	10 Sep
72.049	<i>Eilema sororcula</i>	ORANGE FOOTMAN	76	353	18 May	06 Aug
72.053	<i>Herminia tarsipennalis</i>	FAN-FOOT	210	309	19 Jun	20 Aug
72.055	<i>Herminia grisealis</i>	SMALL FAN-FOOT	67	73	27 May	21 Aug
72.060	<i>Hypenodes humidalis</i>	MARSH OBLIQUE-BARRED	1	2	25 Jul	25 Jul
72.061	<i>Schrankia costaestrigalis</i>	PINION-STREAKED SNOUT	39	65	18 May	07 Nov
72.063	<i>Lygephila pastinum</i>	BLACKNECK	2	2	27 Jun	17 Jul
72.066	<i>Parascotia fuliginaria</i>	WAVED BLACK	2	2	24 Jul	08 Aug
72.067	<i>Phytometra viridaria</i>	SMALL PURPLE-BARRED	5	8	18 May	16 Aug
72.069	<i>Laspeyria flexula</i>	BEAUTIFUL HOOK-TIP	125	140	06 Jun	21 Aug
72.076	<i>Catocala fraxini</i>	CLIFDEN NONPAREIL	4	4	03 Oct	23 Oct
72.078	<i>Catocala nupta</i>	RED UNDERWING	12	13	22 Aug	10 Oct
72.081	<i>Catocala sponsa</i>	DARK CRIMSON UNDERWING	1	1	20 Aug	20 Aug
72.083	<i>Euclidia glyphica</i>	BURNET COMPANION	26	131	22 May	24 Jul
72.084	<i>Euclidia mi</i>	MOTHER SHIPTON	15	15	12 May	08 Jul
73.001	<i>Abrostola tripartita</i>	SPECTACLE	308	364	28 Apr	22 Oct
73.002	<i>Abrostola triplasia</i>	DARK SPECTACLE	37	41	08 May	17 Oct
73.003	<i>Trichoplusia ni</i>	NI MOTH	1	1	19 Aug	19 Aug
73.010	<i>Macdunnoughia confusa</i>	DEWICK'S PLUSIA	2	2	05 Aug	19 Oct
73.012	<i>Diachrysis chrysitis</i>	BURNISHED BRASS	255	336	23 May	24 Oct
73.015	<i>Autographa gamma</i>	SILVER Y	1340	8357	09 Jan	24 Dec

<i>Code</i>	<i>Taxon</i>	<i>Vernacular</i>	<i>Records</i>	<i>Individuals</i>	<i>Earliest</i>	<i>Latest</i>
73.016	<i>Autographa pulchrina</i>	BEAUTIFUL GOLDEN Y	33	38	09 Jun	02 Sep
73.017	<i>Autographa jota</i>	PLAIN GOLDEN Y	37	46	19 May	01 Aug
73.022	<i>Plusia festucae</i>	GOLD SPOT	28	33	24 May	06 Sep
73.024	<i>Deltote pygarga</i>	MARBLED WHITE SPOT	58	107	26 May	02 Aug
73.031	<i>Tyta luctuosa</i>	FOUR-SPOTTED	3	3	27 May	03 Aug
73.032	<i>Colocasia coryli</i>	NUT-TREE TUSSOCK	173	245	23 Mar	16 Sep
73.033	<i>Diloba caeruleocephala</i>	FIGURE OF EIGHT	4	8	17 Oct	22 Oct
73.036	<i>Acronicta alni</i>	ALDER MOTH	15	15	19 May	27 Jun
73.038	<i>Acronicta psi</i>	GREY DAGGER	2	6	09 Aug	11 Aug
73.039	<i>Acronicta aceris</i>	SYCAMORE	25	30	26 May	09 Aug
73.040	<i>Acronicta leporina</i>	MILLER	19	19	24 May	10 Aug
73.045	<i>Acronicta rumicis</i>	KNOT GRASS	216	301	29 Mar	19 Sep
73.046	<i>Subacronicta megacephala</i>	POPLAR GREY	70	76	19 May	24 Aug
73.047	<i>Craniophora ligustri</i>	CORONET	239	374	22 May	07 Sep
73.048	<i>Panemeria tenebrata</i>	SMALL YELLOW UNDERWING	2	7	22 May	22 May
73.050	<i>Cucullia absinthii</i>	WORMWOOD	1	1	26 Jul	26 Jul
73.052	<i>Cucullia umbratica</i>	SHARK	14	14	18 May	26 Jul
73.058	<i>Cucullia verbasci</i>	MULLEIN	22	22	24 Apr	19 Jun
73.062	<i>Amphipyra pyramidea</i>	COPPER UNDERWING	83	123	26 Jul	09 Oct
73.063	<i>Amphipyra berbera</i>	SVENSSON'S COPPER UNDERWING	21	24	25 Jul	23 Sep
73.064	<i>Amphipyra tragopoginis</i>	MOUSE MOTH	42	56	09 Jul	17 Sep
73.065	<i>Asteroscopus sphinx</i>	SPRAWLER	3	4	24 Oct	06 Nov
73.068	<i>Allophytes oxyacanthae</i>	GREEN-BRINDLED CRESCENT	96	139	01 Oct	16 Nov
73.069	<i>Xylocampa areola</i>	EARLY GREY	280	783	20 Feb	23 May
73.070	<i>Pyrrhia umbra</i>	BORDERED SALLOW	29	29	24 May	04 Sep
73.074	<i>Heliothis peltigera</i>	BORDERED STRAW	4	4	26 Jun	08 Oct
73.076	<i>Helicoverpa armigera</i>	SCARCE BORDERED STRAW	17	23	17 Aug	24 Oct
73.082	<i>Cryphia algae</i>	TREE-LICHEN BEAUTY	1	1	11 Aug	11 Aug
73.084	<i>Bryophila domestica</i>	MARBLED BEAUTY	67	80	01 Jul	15 Sep

Code	Taxon	Vernacular	Records	Individuals	Earliest	Latest
73.085	<i>Nyctobrya muralis</i>	MARBLED GREEN	76	104	08 Jul	20 Sep
73.086	<i>Pseudeustrotia candidula</i>	SHINING MARBLED	1	1	18 Aug	18 Aug
73.087	<i>Spodoptera exigua</i>	SMALL MOTTLED WILLOW	7	13	25 Jun	03 Sep
73.092	<i>Caradrina morpheus</i>	MOTTLED RUSTIC	218	358	22 May	13 Sep
73.093	<i>Caradrina kadenii</i>	CLANCY'S RUSTIC	8	11	09 Jul	24 Oct
73.095	<i>Caradrina clavipalpis</i>	PALE MOTTLED WILLOW	81	85	07 Apr	12 Nov
73.099	<i>Hoplodrina ambigua</i>	VINE'S RUSTIC	593	2017	16 May	23 Oct
73.100	<i>Chilodes maritima</i>	SILKY WAINSCOT	3	4	14 Jul	11 Aug
73.101	<i>Charanyca trigrammica</i>	TREBLE LINES	224	840	12 May	29 Jun
73.102	<i>Rusina ferruginea</i>	BROWN RUSTIC	42	70	19 May	15 Jul
73.104	<i>Athetis hospes</i>	PORTER'S RUSTIC	1	1	18 Aug	18 Aug
73.105	<i>Dypterygia scabriuscula</i>	BIRD'S WING	16	17	25 Jun	26 Jul
73.107	<i>Mormo maura</i>	OLD LADY	16	18	28 Jul	08 Sep
73.109	<i>Thalpophila matura</i>	STRAW UNDERWING	94	230	26 Jul	16 Sep
73.113	<i>Phlogophora meticulosa</i>	ANGLE SHADES	479	887	07 Jan	02 Dec
73.114	<i>Euplexia lucipara</i>	SMALL ANGLE SHADES	54	58	24 May	14 Aug
73.119	<i>Helotropha leucostigma</i>	CRESCENT	12	17	08 Jul	30 Aug
73.120	<i>Eremobia ochroleuca</i>	DUSKY SALLOW	25	49	22 Jul	26 Aug
73.121	<i>Gortyna flavago</i>	FROSTED ORANGE	64	76	05 Jul	24 Oct
73.123	<i>Hydraecia micacea</i>	ROSY RUSTIC	187	244	21 Jul	25 Oct
73.128	<i>Amphipoea oculea</i>	EAR MOTH	1	1	15 Aug	15 Aug
73.131	<i>Luperina testacea</i>	FLOUNCED RUSTIC	379	1508	21 Jul	10 Oct
73.134	<i>Rhizedra lutosa</i>	LARGE WAINSCOT	12	12	26 Jul	14 Nov
73.135	<i>Sedina buettneri</i>	BLAIR'S WAINSCOT	4	5	08 Oct	23 Oct
73.136	<i>Nonagria typhae</i>	BULRUSH WAINSCOT	4	4	20 Aug	22 Oct
73.137	<i>Arenostola phragmitidis</i>	FEN WAINSCOT	2	2	08 Jul	31 Jul
73.139	<i>Lenisa geminipuncta</i>	TWIN-SPOTTED WAINSCOT	3	3	09 Aug	14 Aug
73.141	<i>Archanara dissoluta</i>	BROWN-VEINED WAINSCOT	6	8	03 Aug	30 Aug
73.142	<i>Coenobia rufa</i>	SMALL RUFOUS	11	11	29 Jul	31 Aug

<i>Code</i>	<i>Taxon</i>	<i>Vernacular</i>	<i>Records</i>	<i>Individuals</i>	<i>Earliest</i>	<i>Latest</i>
73.144	<i>Denticucullus pygmina</i>	SMALL WAINSCOT	39	41	22 Jul	11 Oct
73.145	<i>Photedes fluxa</i>	MERE WAINSCOT	1	1	25 Jul	25 Jul
73.147	<i>Photedes minima</i>	SMALL DOTTED BUFF	16	17	18 Jun	11 Aug
73.151	<i>Globia sparganii</i>	WEBB'S WAINSCOT	1	1	30 Aug	30 Aug
73.154	<i>Apamea remissa</i>	DUSKY BROCADE	53	60	02 Jun	26 Aug
73.155	<i>Apamea epomidion</i>	CLOUDED BRINDLE	42	56	28 May	22 Jul
73.156	<i>Apamea crenata</i>	CLOUDED-BORDERED BRINDLE	55	73	16 May	28 Jul
73.158	<i>Apamea sordens</i>	RUSTIC SHOULDER-KNOT	107	194	01 May	29 Jun
73.159	<i>Apamea unanimis</i>	SMALL CLOUDED BRINDLE	3	3	27 May	06 Jun
73.160	<i>Apamea scolopacina</i>	SLENDER BRINDLE	11	15	17 Jul	13 Aug
73.162	<i>Apamea monoglypha</i>	DARK ARCHES	752	2893	19 May	21 Oct
73.163	<i>Apamea lithoxylaea</i>	LIGHT ARCHES	95	131	08 Jun	12 Aug
73.164	<i>Apamea sublustris</i>	REDDISH LIGHT ARCHES	5	7	23 Jun	10 Jul
73.168	<i>Laterologia ophiogramma</i>	DOUBLE LOBED	12	12	25 Jun	10 Aug
73.169	<i>Mesapamea secalis</i>	COMMON RUSTIC	5	9	30 Jun	17 Jul
73.171	<i>Litoligia literosa</i>	ROSY MINOR	26	45	11 Jul	26 Aug
73.172	<i>Mesologia furuncula</i>	CLOAKED MINOR	94	123	28 Jun	16 Sep
73.173	<i>Oligia strigilis</i>	MARbled MINOR	7	10	17 Jun	17 Jul
73.174	<i>Oligia latruncula</i>	TAWNY MARbled MINOR	1	1	29 Jun	29 Jun
73.175	<i>Oligia versicolor</i>	RUFous MINOR	3	3	27 May	01 Jul
73.176	<i>Oligia fasciuncula</i>	MIDDLE-BARRED MINOR	29	31	27 May	20 Aug
73.178	<i>Leucochlaena oditis</i>	BEAUTIFUL GOTHIC	15	30	08 Sep	23 Oct
73.179	<i>Tiliacea citrago</i>	ORANGE SALLOW	4	4	17 Sep	23 Oct
73.180	<i>Tiliacea aurago</i>	BARRED SALLOW	70	131	15 Sep	18 Nov
73.181	<i>Xanthia togata</i>	PINK-BARRED SALLOW	42	55	14 Sep	24 Oct
73.182	<i>Cirrhia icteritia</i>	SALLOW	57	66	14 Sep	15 Nov
73.186	<i>Agrochola lychnidis</i>	BEADED CHESTNUT	181	533	02 Sep	08 Dec
73.187	<i>Agrochola litura</i>	BROWN-SPOT PINION	11	11	14 Sep	24 Oct
73.188	<i>Agrochola helvola</i>	FLOUNCED CHESTNUT	2	2	09 Oct	19 Oct

<i>Code</i>	<i>Taxon</i>	<i>Vernacular</i>	<i>Records</i>	<i>Individuals</i>	<i>Earliest</i>	<i>Latest</i>
73.189	<i>Agrochola lota</i>	RED-LINE QUAKER	78	110	06 Oct	13 Dec
73.190	<i>Agrochola macilenta</i>	YELLOW-LINE QUAKER	65	97	Unavailable	Unavailable
73.191	<i>Agrochola haematidea</i>	SOUTHERN CHESTNUT	1	1	08 Oct	08 Oct
73.192	<i>Agrochola circellaris</i>	BRICK	30	56	07 Oct	13 Dec
73.193	<i>Omphaloscelis lunosa</i>	LUNAR UNDERWING	276	1056	26 Jul	12 Nov
73.194	<i>Conistra vaccinii</i>	CHESTNUT	168	523	Unavailable	Unavailable
73.195	<i>Conistra ligula</i>	DARK CHESTNUT	57	62	Unavailable	Unavailable
73.197	<i>Conistra rubiginea</i>	DOTTED CHESTNUT	10	16	Unavailable	Unavailable
73.200	<i>Lithophane semibrunnea</i>	TAWNY PINION	3	3	Unavailable	Unavailable
73.201	<i>Lithophane socia</i>	PALE PINION	22	24	Unavailable	Unavailable
73.202	<i>Lithophane ornitopus</i>	GREY SHOULDER-KNOT	41	43	Unavailable	Unavailable
73.206	<i>Lithophane leautieri</i>	BLAIR'S SHOULDER-KNOT	70	149	27 Sep	18 Nov
73.209	<i>Xylena vetusta</i>	RED SWORD-GRASS	4	4	Unavailable	Unavailable
73.210	<i>Eupsilia transversa</i>	SATELLITE	44	54	Unavailable	Unavailable
73.212	<i>Ipimorpha retusa</i>	DOUBLE KIDNEY	6	7	27 Jul	20 Aug
73.213	<i>Ipimorpha subtusa</i>	OLIVE	6	6	02 Aug	25 Sep
73.216	<i>Cosmia trapezina</i>	DUN-BAR	166	222	28 Jun	15 Sep
73.217	<i>Cosmia pyralina</i>	LUNAR-SPOTTED PINION	2	2	04 Aug	10 Aug
73.219	<i>Atethmia centrigo</i>	CENTRE-BARRED SALLOW	37	53	04 Sep	08 Oct
73.220	<i>Brachylomia viminalis</i>	MINOR SHOULDER-KNOT	16	17	03 Jul	12 Aug
73.221	<i>Parastichtis suspecta</i>	SUSPECTED	19	27	26 Jun	30 Jul
73.222	<i>Apterogenum ypsilon</i>	DINGY SHEARS	10	10	28 Jun	06 Aug
73.223	<i>Dryobota labecula</i>	OAK RUSTIC	12	34	20 Oct	23 Nov
73.224	<i>Griposia aprilina</i>	MERVEILLE DU JOUR	51	76	01 Oct	17 Nov
73.225	<i>Dryobotodes eremita</i>	BRINDLED GREEN	16	18	16 Sep	24 Oct
73.227	<i>Dryobotodes tenebrosa</i>	SOMBRE BROCADE	1	2	28 Sep	28 Sep
73.229	<i>Trigonophora flammea</i>	FLAME BROCADE	12	13	04 Oct	24 Oct
73.230	<i>Aporophyla australis</i>	FEATHERED BRINDLE	53	165	26 Aug	23 Oct
73.233	<i>Aporophyla nigra</i>	BLACK RUSTIC	239	695	11 Aug	23 Dec

<i>Code</i>	<i>Taxon</i>	<i>Vernacular</i>	<i>Records</i>	<i>Individuals</i>	<i>Earliest</i>	<i>Latest</i>
73.234	<i>Dasypolia templi</i>	BRINDLED OCHRE	3	3	18 Oct	23 Oct
73.235	<i>Polymixis lichenea</i>	FEATHERED RANUNCULUS	182	607	08 Jul	12 Nov
73.237	<i>Polymixis flavicincta</i>	LARGE RANUNCULUS	18	20	09 Sep	08 Nov
73.241	<i>Panolis flammea</i>	PINE BEAUTY	24	29	16 Mar	24 May
73.242	<i>Orthosia incerta</i>	CLOUDED DRAB	260	673	23 Feb	17 Jun
73.243	<i>Orthosia miniosa</i>	BLOSSOM UNDERWING	1	1	27 Mar	27 Mar
73.244	<i>Orthosia cerasi</i>	COMMON QUAKER	526	2615	Unavailable	Unavailable
73.245	<i>Orthosia cruda</i>	SMALL QUAKER	276	3130	23 Jan	30 May
73.246	<i>Orthosia populeti</i>	LEAD-COLOURED DRAB	6	8	20 Mar	30 Mar
73.247	<i>Orthosia gracilis</i>	POWDERED QUAKER	113	203	10 Mar	21 May
73.249	<i>Orthosia gothica</i>	HEBREW CHARACTER	756	4257	Unavailable	Unavailable
73.250	<i>Anorthoa munda</i>	TWIN-SPOTTED QUAKER	162	774	27 Feb	18 May
73.252	<i>Tholera cespitis</i>	HEDGE RUSTIC	12	35	15 Aug	27 Sep
73.253	<i>Tholera decimalis</i>	FEATHERED GOTHIC	34	77	04 Aug	21 Sep
73.254	<i>Cerapteryx graminis</i>	ANTLER MOTH	6	6	06 Aug	22 Aug
73.255	<i>Anarta trifolii</i>	NUTMEG	23	29	12 May	06 Sep
73.257	<i>Anarta myrtilli</i>	BEAUTIFUL YELLOW UNDERWING	5	19	25 Jul	17 Aug
73.261	<i>Polia nebulosa</i>	GREY ARCHES	35	40	18 Jun	03 Aug
73.263	<i>Lacanobia w-latinum</i>	LIGHT BROCADE	28	54	19 May	30 Jun
73.264	<i>Lacanobia thalassina</i>	PALE-SHOULDERED BROCADE	6	7	09 Jun	10 Aug
73.266	<i>Lacanobia suasa</i>	DOG'S TOOTH	3	3	05 Jun	17 Aug
73.267	<i>Lacanobia oleracea</i>	BRIGHT-LINE BROWN-EYE	453	812	20 Apr	20 Oct
73.270	<i>Melanchra persicariae</i>	DOT MOTH	85	111	24 Jun	01 Sep
73.273	<i>Hada plebeja</i>	SHEARS	27	49	18 May	26 Jul
73.274	<i>Mamestra brassicae</i>	CABBAGE MOTH	95	105	09 May	08 Sep
73.279	<i>Hecatera bicolorata</i>	BROAD-BARRED WHITE	4	4	26 Jun	25 Jul
73.281	<i>Hadena bicruris</i>	LYCHNIS	86	91	16 May	19 Aug
73.286	<i>Hadena perplexa</i>	TAWNY SHEARS	6	9	31 May	26 Aug
73.289	<i>Mythimna pudorina</i>	STRIPED WAINSCOT	23	27	02 Jul	26 Aug

<i>Code</i>	<i>Taxon</i>	<i>Vernacular</i>	<i>Records</i>	<i>Individuals</i>	<i>Earliest</i>	<i>Latest</i>
73.290	<i>Mythimna conigera</i>	BROWN-LINE BRIGHT-EYE	36	93	08 Jul	23 Aug
73.291	<i>Mythimna favicolor</i>	MATHEW'S WAINSCOT	1	1	05 Jul	05 Jul
73.291	<i>Mythimna pallens</i>	COMMON WAINSCOT	286	503	22 May	23 Oct
73.293	<i>Mythimna impura</i>	SMOKY WAINSCOT	256	518	25 Jun	10 Sep
73.294	<i>Mythimna straminea</i>	SOUTHERN WAINSCOT	16	16	01 Jul	07 Sep
73.295	<i>Mythimna vitellina</i>	DELICATE	57	100	22 Jun	16 Nov
73.296	<i>Mythimna unipuncta</i>	AMERICAN WAINSCOT OR WHITE-SPECK	4	4	27 Sep	19 Nov
73.297	<i>Mythimna albipuncta</i>	WHITE-POINT	282	715	04 May	08 Nov
73.298	<i>Mythimna ferrago</i>	CLAY	230	309	02 Jun	25 Aug
73.300	<i>Mythimna l-album</i>	L-ALBUM WAINSCOT	126	165	25 May	15 Nov
73.301	<i>Leucania comma</i>	SHOULDER-STRIPED WAINSCOT	40	55	24 May	08 Aug
73.302	<i>Leucania obsoleta</i>	OBSCUR E WAINSCOT	3	4	24 May	04 Jul
73.304	<i>Leucania loreyi</i>	COSMOPOLITAN	2	2	18 Aug	25 Aug
73.307	<i>Peridroma saucia</i>	PEARLY UNDERWING	53	62	08 Jan	11 Nov
73.314	<i>Euxoa nigricans</i>	GARDEN DART	10	11	24 Jun	13 Aug
73.316	<i>Agrotis cinerea</i>	LIGHT FEATHERED RUSTIC	4	25	27 Apr	02 Jun
73.317	<i>Agrotis exclamationis</i>	HEART AND DART	781	3921	03 May	14 Sep
73.319	<i>Agrotis segetum</i>	TURNIP MOTH	144	176	24 Jan	19 Nov
73.320	<i>Agrotis clavis</i>	HEART AND CLUB	234	795	22 May	11 Aug
73.322	<i>Agrotis vestigialis</i>	ARCHER'S DART	9	17	29 Jul	03 Sep
73.324	<i>Agrotis trux</i>	CRESCENT DART	34	41	05 Jul	25 Aug
73.325	<i>Agrotis puta</i>	SHUTTLE-SHAPED DART	561	1350	19 Apr	23 Oct
73.327	<i>Agrotis ipsilon</i>	DARK SWORD-GRASS	224	305	19 Mar	23 Nov
73.328	<i>Axylia putris</i>	FLAME	296	553	19 May	16 Aug
73.329	<i>Ochropleura plecta</i>	FLAME SHOULDER	850	2527	07 Apr	08 Oct
73.330	<i>Ochropleura leucogaster</i>	RADFORD'S FLAME SHOULDER	1	1	02 Dec	02 Dec
73.332	<i>Diarsia brunnea</i>	PURPLE CLAY	44	63	09 Jun	01 Sep
73.333	<i>Diarsia mendica</i>	INGRAILED CLAY	181	312	22 May	04 Sep
73.334	<i>Diarsia rubi</i>	SMALL SQUARE-SPOT	109	147	23 May	24 Sep

<i>Code</i>	<i>Taxon</i>	<i>Vernacular</i>	<i>Records</i>	<i>Individuals</i>	<i>Earliest</i>	<i>Latest</i>
73.336	<i>Cerastis rubricosa</i>	RED CHESTNUT	42	46	27 Feb	21 May
73.338	<i>Lycophotia porphyrea</i>	TRUE LOVER'S KNOT	109	500	27 May	22 Aug
73.341	<i>Standfussiana lucernea</i>	NORTHERN RUSTIC	2	2	26 Jul	28 Jul
73.342	<i>Noctua pronuba</i>	LARGE YELLOW UNDERWING	1395	7831	03 May	18 Nov
73.343	<i>Noctua fimbriata</i>	BROAD-BORDERED YELLOW UNDERWING	214	283	02 Jun	18 Oct
73.345	<i>Noctua comes</i>	LESSER YELLOW UNDERWING	619	1545	07 Jun	25 Oct
73.346	<i>Noctua interjecta</i>	LEAST YELLOW UNDERWING	55	77	13 Jul	30 Sep
73.347	<i>Noctua janthina</i>	LANGMAID'S YELLOW UNDERWING	1	1	09 Jul	09 Jul
73.348	<i>Noctua janthe</i>	LESSER BROAD-BORDERED YELLOW UNDERWING	564	3610	09 Jul	23 Oct
73.352	<i>Anaplectoides prasina</i>	GREEN ARCHES	15	20	14 Jun	14 Jul
73.355	<i>Xestia castanea</i>	NEGLECTED RUSTIC	1	1	03 Sep	03 Sep
73.356	<i>Xestia agathina</i>	HEATH RUSTIC	3	3	13 Sep	15 Sep
73.357	<i>Xestia xanthographa</i>	SQUARE-SPOT RUSTIC	604	2135	18 Jun	13 Nov
73.358	<i>Xestia sexstrigata</i>	SIX-STRIPED RUSTIC	55	85	09 Jun	17 Sep
73.359	<i>Xestia c-nigrum</i>	SETACEOUS HEBREW CHARACTER	997	4279	08 May	19 Nov
73.361	<i>Xestia triangulum</i>	DOUBLE SQUARE-SPOT	173	257	18 Jun	08 Sep
73.365	<i>Eugnorisma glareosa</i>	AUTUMNAL RUSTIC	8	11	14 Sep	23 Oct
73.368	<i>Naenia typica</i>	GOTHIC	11	11	18 Jun	20 Aug
74.002	<i>Meganola albula</i>	KENT BLACK ARCHES	70	95	08 Jul	26 Aug
74.003	<i>Nola cucullatella</i>	SHORT-CLOAKED MOTH	29	49	24 Jun	08 Aug
74.004	<i>Nola confusalis</i>	LEAST BLACK ARCHES	67	103	29 Mar	27 Jul
74.007	<i>Bena bicolorana</i>	SCARCE SILVER-LINES	4	4	17 Jul	08 Aug
74.008	<i>Pseudoips prasinana</i>	GREEN SILVER-LINES	26	26	31 May	31 Jul
74.009	<i>Nycteola revayana</i>	OAK NYCTEOLINE	30	31	22 Feb	22 Oct
74.011	<i>Earias clorana</i>	CREAM-BORDERED GREEN PEA	21	22	09 Jun	22 Aug

2012 Significant Resident and Migrant Species Report

Unless stated otherwise, all records are adult moths observed at light traps. Records with vague dates, undetermined records and critical species where there is doubt are excluded (although 10km square is reported). Also excluded are species where the number of recorded 10km squares >10 and the number of records per species is >25. Sites are removed from confidential species. Where no quantity is given, a single moth is assumed. All individual counts are minimum counts.

3.004 *Phymatopus hecta* (Linnaeus, 1758) **GOLD SWIFT** Local
Recorded in: SY67; SY89. SY67/6870 Isle of Portland (SY6870); 20 on 02 Jun (D Saunders). SY89/8990 Cold Harbour (SY8990); female on 01 Jul, leg. N Tuck (N Tuck, M Tuck).

50.001 *Cossus cossus* (Linnaeus, 1758) **GOAT MOTH** Nb
Recorded in: SY98. SY98/9485 Hartland Moor (SY9485); 22 Aug (R Arnfield).

53.001 *Apoda limacodes* (Hufnagel, 1766) **FESTOON** Nb
Recorded in: SU11; SY78; SY79; SY88; SY89; SY99; SZ09. Branksome, Penn Hill, Frankland Crescent (SZ0591); 17 Jul; 24 Jul; 25 Jul (J Seawright). Broadmayne, Spring Gardens (SY7387); 27 Jun; 25 Jul (P Bruce-Jones). Lytchett Bay, Lytchett Way (SY9792); 27 Jun (N J Hull). SU11/MT 0001 Alderholt (SU1112); 30 May (T Morris). SY79/MT 0001 Puddletown (SY7695); 13 Jul; 24 Jul; 2 on 25 Jul; 26 Jul; 04 Aug; 08 Aug (H G Wood Homer). SY88/MT 0001 East Lulworth (SY8583); 01 Aug (L J Hill). SY88/MT 0010 East Lulworth (SY8582); 27 Jun; 29 Jun; 4 on 24 Jul (L J Hill). SY89/8892 Bloxworth Heath (SY8892); 25 Jul (M S Parsons). SY89/8893 Bloxworth Heath (SY8893); 2 on 23 Jul, leg. M S Parsons (M S Parsons, L J Hill, A O J Evans). SZ09/MT 0009 Poole (SZ0097); 09 Jul (J Fradgley).

54.002 *Adscita statures* (Linnaeus, 1758) **FORESTER** Local
Recorded in: ST60; ST71; SU01. Martin (SU0319); 21 Jul, leg. C Brooks (C L Amond). ST60/6002 Lankham Bottom (ST6002); field, 18 Jun (C R Burningham). ST71/002/02 Rooksmoor (SMU 2) (ST7411); field, 3 on 24 Jun (N Spring). ST71/7410 Rooksmoor (ST7410); field, 2 on 09 Jun (N Spring). ST71/7411 Rooksmoor (ST7411); field, 09 Jun; field, 19 Jun; field, 3 on 24 Jun; field, 5 on 24 Jun; field, 6 on 05 Jul; field, 08 Jul (N Spring).

54.009 *Zygaena lonicerae* (Scheven, 1777) **NARROW-BORDERED FIVE-SPOT BURNET**
Recorded in: ST71. ST71/002/02 Rooksmoor (SMU 2) (ST7411); field, 24 Jun; field, 05 Jul; field, 2 on 08 Jul; field, 2 on 17 Jul (N Spring). ST71/7410 Rooksmoor (ST7410); field, 05 Jul; field, 2 on 08 Jul; field, 17 Jul (N Spring). ST71/7411 Rooksmoor (ST7411); field, 2 on 24 Jun; field, 14 on 05 Jul; field, 13 on 08 Jul; field, 6 on 17 Jul; field, 26 Jul; field, 2 on 05 Jul; field, 3 on 08 Jul; field, 17 Jul; field, 24 Jun; field, 55 on 05 Jul; field, 29 on 08 Jul; field, 2 on 17 Jul; field, 2 on 08 Jul (N Spring). ST71/7413 Lydlinch Common (ST7413); field, 12 on 20 Jun (M Taylor).

54.010 *Zygaena trifolii* (Esper, 1783) **FIVE-SPOT BURNET** Local
Recorded in: ST70; ST71; ST81; ST82; SY67. Higher Hill (ST7202); field, 100 on 19 Jun (M S Warren). Melbury Hill (ST8819); field, 09 Jun (D Gower). ST71/7410 Rooksmoor (ST7410); field, 17 Jun (M S Parsons). ST81/001 Fontmell and Melbury Downs SSSI (ST8817); field, 17 Jun (DWT staff). SY67/6771 Isle of Portland (SY6771); field, 10 on 10 Aug (J Williamson). Zig-zag Hill (ST8920); field, 100 on 08 Jul (M S Warren).

66.005 *Eriogaster lanestris* (Linnaeus, 1758) **SMALL EGGAR** Nb
Recorded in: ST71; ST90; ST91; SY58; SY67; SY68; SY79; SY88. ST71/7411 Rooksmoor (ST7411); field, larval web on 17 Jun (M S Parsons). ST90/9602 Badbury Rings (ST9602); 29 Mar (V Giavarini). ST91/9914 Canada Farm (ST9914); field, 100 larval on 27 May (A Bryant). SY58/5388 Puncknowle (SY5388); 23 Mar; field, 15 larval on 23 Jun, leg. M Hetherington (M Hetherington). SY67/6779 Radipole Lake (SY6779); field, larval on 23 Jun; field, larval on 13 Jun (J Oughton). SY67/MT 0006 Weymouth (SY6778); 28 Mar (J Oughton). SY68/6780 Radipole Lake (SY6780); field, larval web on 13 Jun (J Oughton). SY68/MT 0002 Chickerell (SY6580); 2 on 28 Mar; 30 Mar (C Pinder). SY79/MT 0001 Puddletown (SY7695); 27 Mar (H G Wood Homer). SY88/MT 0010 East Lulworth (SY8582); 28 Mar (L J Hill).

66.006 *Lasiocampa trifolii* ([Denis & Schiffermüller], 1775) **GRASS EGGAR** Na
Recorded in: SY98. SY98/9685 Hartland Moor (SY9685); 4 on 14 Aug; 17 Aug (R Arnfield).

69.004 *Agrius convolvuli* (Linnaeus, 1758) **CONVOLVULUS HAWK-MOTH** Migrant
Recorded in: ST80; SU11; SY39; SY49; SY58; SY66; SY67; SY78; SY79; SZ07. ST80/8304 Winterborne Stickland (ST8304); 17 Sep (W W Bown). SU11/MT 0001 Alderholt (SU1112); 18 Aug; 08 Oct (T Morris). SY39/MT 0001 Charmouth (SY3693); 18 Aug (G Sell). SY49/MT 0002 Bothenhampton (SY4892); 28 Aug; 12 Sep; 04 Oct (M S Parsons). SY58/5388 Puncknowle (SY5388); 17 Oct; field, 17 Oct (M Hetherington). SY66/MT 0001 Portland (SY6868); 19 Aug; 20 Aug; 07 Sep; 26 Sep; 01 Oct; field, dead on 11 Oct (M Cade). SY67/6870 Isle of Portland

- (SY6870); 08 Sep (D Saunders). SY67/6870 Portland, Reap Lane (SY6870); 06 Sep; 08 Sep (M Cade). SY67/6971 Isle of Portland (SY6971); 19 Aug (M Cade). SY79/MT 0001 Puddletown (SY7695); 18 Aug; 21 Aug; 02 Sep (H G Wood Homer). SZ07/0377 Durlston Country Park (SZ0377); 11 Sep (S Breeze). West Knighton (SY7387); 18 Aug (J Oughton).
- 69.009 *Hemaris fuciformis* (Linnaeus, 1758) **BROAD-BORDERED BEE HAWK-MOTH** Nb
Recorded in: SY88. SY88/MT 0001 East Lulworth (SY8583); field, 09 Jul, leg. M S Parsons (Z Randle).
- 69.014 *Hyles gallii* (Rottemburg, 1775) **BEDSTRAW HAWK-MOTH** Migrant
Recorded in: SY66. SY66/MT 0001 Portland (SY6868); 26 Jul (M Cade).
- 69.015 *Hyles livornica* (Esper, [1804]) **STRIPED HAWK-MOTH** Migrant
Recorded in: SY67; SZ09. SY67/6972 Isle of Portland (SY6972); 26 Jun (M Cade).
- 70.002 *Idaea muricata* (Hufnagel, 1767) **PURPLE-BORDERED GOLD** Nb
Recorded in: SU00. SU00/0604 Holt Heath (SU0604); field, 2 on 10 Jul (M S Parsons).
- 70.010 *Idaea sylvestraria* (Hübner, [1799]) **DOTTED BORDER WAVE** Nb
Recorded in: SY89; SZ19. SY89/8892 Bloxworth Heath (SY8892); 25 Jul (M S Parsons).
- 70.015 *Idaea emarginata* (Linnaeus, 1758) **SMALL SCALLOP** Local
Recorded in: SU00; SZ08; SZ19. SU00/0604 Holt Heath (SU0604); 26 Jul (R Hilton). SZ08/0386 Poole Harbour, Bramble Bush Bay (SZ0386); 29 Jul (J Seawright).
- 70.017 *Idaea degeneraria* (Hübner, [1799]) **PORTLAND RIBBON WAVE** RDB3
Recorded in: SY39; SY68. SY39/MT 0001 Charmouth (SY3693); 09 Sep; 11 Sep; 15 Sep (G Sell). SY68/MT 0002 Chickerell (SY6580); 10 Jun (C Pinder).
- 70.025 *Scopula immutata* (Linnaeus, 1758) **LESSER CREAM WAVE** Local
Recorded in: ST40; SU00; SY99. Lytchett Bay, Lytchett Way (SY9792); 25 Jul (N J Hull). ST40/MT 0001 Beaminster (ST4701); 08 Jul (S Philp). SU00/0509 Boys Wood (SU0509); 25 Jul (V Giavarini).
- 70.030 *Cyclophora pendularia* (Clerck, 1759) **DINGY MOCHA** RDB3
Recorded in: SU00; SY78; SY88; SY89; SY98. Oakers Wood, Moreton Plantation (SY8191); field, larval on 30 Aug (M S Parsons). SU00/0502 Holt Heath (SU0502); field, larval on 30 Aug (M S Parsons). SU00/0503 White Sheet Plantation (SU0503); field, larval on 30 Aug (M S Parsons). SY88/8086 Winfrith Heath (SY8086); field, larval on 12 Sep, leg. M S Parsons; field, 5 larval on 06 Sep (M S Parsons, A Rosenthal). SY88/8087 Winfrith Heath (SY8087); field, larval on 06 Sep (M S Parsons). SY98/9089 Cold Harbour (SY9089); field, larval on 03 Sep (M S Parsons). Tadnoll Heath (SY7987); field, 2 larval on 06 Sep (M S Parsons). Throop Heath (SY8291); field, 5 larval on 30 Aug (M S Parsons). Uddens Plantation & Ferndown Forest (SU0602); field, 3 larval on 30 Aug (M S Parsons).
- 70.031 *Cyclophora annularia* (Fabricius, 1775) **MOCHA** Nb
Recorded in: ST61; SY39; SZ09. SY39/MT 0001 Charmouth (SY3693); 27 May; 23 Jun (G Sell). SZ09/MT 0009 Poole (SZ0097); 23 May (J Fradgley). Yetminster, Shearstones (ST6010); 2 on 02 Jun; 23 Aug; 25 Aug; 26 Aug; 28 Aug (C R Burningham).
- 70.033 *Cyclophora pupillaria* (Hübner, [1799]) **BLAIR'S MOCHA** Migrant
Recorded in: SZ07. SZ07/MT 0002 Swanage (SZ0278); 28 Aug, leg. T A Box; 05 Sep, leg. T A Box (P England).
- 70.034 *Cyclophora ruficiliaria* (Herrich-Schäffer, 1855) **JERSEY MOCHA** Channel Islands only
Recorded in: SY66; SY67; SY68; SZ09. SY66/MT 0001 Portland (SY6868); 12 Aug; 31 Aug (M Cade). SY67/MT 0006 Weymouth (SY6778); female on 28 Aug, leg. P H Sterling (J Oughton). SZ09/MT 0008 Ferndown Town (SZ0799); female on 14 Aug, leg. A M Davis (D Couzens). Upwey (SY6784); field, 26 Aug (S Faulkner). Wyke Regis (SY6677); field, 2 on 24 Aug (S Faulkner).
- 70.038 *Rhodometra sacraria* (Linnaeus, 1767) **VESTAL** Migrant
Recorded in: ST40; SY39; SY66; SY67; SY79; SY88; SZ07; SZ09. Portland, Southwell Road, Limestone Cottage (SY6870); 5 on 25 Sep; 2 on 26 Sep (B Coleman). ST40/MT 0001 Beaminster (ST4701); 17 Aug (S Philp). SY39/3492 Lyme Regis, Charmouth Road car park (SY3492); 24 Aug (P Major). SY66/MT 0001 Portland (SY6868); 19 Aug; 20 Aug (M Cade). SY67/MT 0006 Weymouth (SY6778); 23 Sep (J Oughton). SY79/MT 0001 Puddletown (SY7695); 17 Aug; 19 Aug (H G Wood Homer). SY88/MT 0001 East Lulworth (SY8583); 22 Aug (L J Hill). SY88/MT 0010 East Lulworth (SY8582); 20 Aug; 16 Oct; 16 Nov (L J Hill). SZ07/0377 Durlston Country Park (SZ0377); 20 Aug (R

Arnfield). SZ09/MT 0002 Poole (SZ0098); 17 Nov (J V F Hammick). SZ09/MT 0012 Poole (SZ0095); 26 Jun (A H Bicker).

70.043 *Scotopteryx bipunctaria* ([Denis & Schiffermüller], 1775) **CHALK CARPET** Nb

Recorded in: ST70; ST81; SY39; SY48; SY67; SY68; SY78; SY87; SZ07. Bincombe Hill (SY6884); field, 3 on 27 Jul (S Ellis). Lulworth, Middle Bottom (SY8079); field, 27 Jul, leg. R Jones (R Jones, S Woodley). Osmington Bay Holiday Park (SY7182); field, 14 Aug (R Jones). Osmington, White Horse Hill (SY7284); field, 2 on 26 Jul (S Ellis). Portland, Bowers Quarry (SY6871); field, 24 Jul (C Bulman). Rawlesbury Camp (ST7705); field, 29 Jul (M S Warren). ST81/8818 Clubmen's Down (ST8818); field, 23 Aug (P Major). SY39/3492 Lyme Regis, Charmouth Road car park (SY3492); 22 Aug (P Major). SY39/MT 0001 Charmouth (SY3693); 25 Jun; 06 Jul; 25 Jul; 2 on 26 Jul; 27 Jul; 08 Aug; 14 Aug; 15 Aug; 17 Aug; 19 Aug; 01 Sep (G Sell). SY48/4988 Burton Bradstock (SY4988); field, 7 on 17 Jul (M S Parsons). SY67/6870 Isle of Portland (SY6870); 24 Jul; 25 Jul; 13 Aug (D Saunders). SY67/6972 Isle of Portland (SY6972); field, 5 on 20 Aug (S Ellis). SY67/MT 0006 Weymouth (SY6778); 03 Sep (J Oughton). SY68/6589 Martinsdown (SY6588); 26 May (J M Elliott). SY68/6981 Furzy Cliff (SY6981); field, 5 on 19 Aug (S Ellis). SY78/005/11 South Dorset Coast (SMU 11) (SY7880); field, 23 Jul (M S Warren). SZ07/0377 Durlston Country Park (SZ0377); 26 Aug (S Breeze). The Warren, White Nothe (SY7880); field, 23 Jul (M S Warren).

70.047 *Nycterosea obstipata* (Fabricius, 1794) **GEM** Migrant

Recorded in: ST40; ST61; ST80; SY49; SY67; SY68; SY79; SY88; SY98; SZ09; SZ19. Branksome, Penn Hill, Frankland Crescent (SZ0591); 22 Oct (J Seawright). ST40/MT 0002 Beaminster (ST4801); 20 Oct, leg. M Raper; 2 on 22 Oct, leg. M Raper (M Raper, D Raper). ST80/8304 Winterborne Stickland (ST8304); 18 Oct (W W Bown). ST80/MT 0001 Winterborne Stickland (ST8305); 25 Nov (L de Whalley). SY49/MT 0002 Bothenhampton (SY4892); male on 22 Oct (M S Parsons). SY67/6870 Isle of Portland (SY6870); 24 Oct (D Saunders). SY67/MT 0006 Weymouth (SY6778); 23 Oct; field, female on 30 Oct (J Oughton). SY68/MT 0002 Chickerell (SY6580); 20 Sep; 25 Oct (C Pinder). SY79/MT 0001 Puddletown (SY7695); 19 Aug; 18 Oct; 19 Oct (H G Wood Homer). SY88/MT 0001 East Lulworth (SY8583); 22 Oct; 24 Oct (L J Hill). SY88/MT 0010 East Lulworth (SY8582); 11 Oct (L J Hill). SY98/9288 Church Knowle (SY9288); 10 May (R W Adams). SZ09/MT 0009 Poole (SZ0097); 2 on 22 Oct (J Fradgley). Yetminster, Shearstones (ST6010); 24 Oct (C R Burningham).

70.057 *Catarhoe rubidata* ([Denis & Schiffermüller], 1775) **RUDDY CARPET** Nb

Recorded in: SY79. SY79/MT 0001 Puddletown (SY7695); 21 Jun; 25 Jun; 10 on 17 Jul (H G Wood Homer).

70.062 *Epirrhoe rivata* (Hübner, [1813]) **WOOD CARPET** Local

Recorded in: ST61; SU11; SY39; SY79; SZ07. SU11/MT 0001 Alderholt (SU1112); 01 Jun; 25 Jul; 2 on 05 Aug (T Morris). SY39/MT 0001 Charmouth (SY3693); 29 Jun; 25 Jul (G Sell). SY79/MT 0001 Puddletown (SY7695); 18 Jun; 2 on 21 Jun; 4 on 25 Jun; 2 on 27 Jun; 5 on 30 Jun; 09 Jul; 12 on 17 Jul; 26 Jul (H G Wood Homer). SZ07/MT 0002 Swanage (SZ0278); 17 Jul; 01 Aug (P England). Yetminster, Shearstones (ST6010); 23 Aug (C R Burningham).

70.063 *Epirrhoe galiata* ([Denis & Schiffermüller], 1775) **GALIUM CARPET** Local

Recorded in: ST40; SY66; SY67; SY79; SY87; SY97; SZ07; SZ09. Portland, Weston (SY6771); field, 30 Jun (J Oughton). ST40/MT 0001 Beaminster (ST4701); 2 on 09 Jun (S Philp). SY66/MT 0001 Portland (SY6868); 28 May (M Cade). SY67/6870 Isle of Portland (SY6870); 23 Jul (D Saunders). SY67/MT 0005 Portland (SY6871); 04 Jul; 06 Sep (J Williamson). SY79/MT 0001 Puddletown (SY7695); 26 Jul (H G Wood Homer). SY87/8779 Worbarrow (SY8779); field, 12 Aug (R Arnfield). SY97/9178 Kimmeridge (SY9178); 17 Aug; 18 Aug; 19 Aug (R Arnfield). SZ07/MT 0002 Swanage (SZ0278); 26 Jul; 08 Aug (P England). SZ09/MT 0002 Poole (SZ0098); 30 May (J V F Hammick).

70.064 *Euphyia biangulata* (Haworth, 1809) **CLOAKED CARPET** Nb

Recorded in: SU00; SU11; SY88. SU00/0509 Boys Wood (SU0509); 09 Aug (V Giavarini). SU11/MT 0001 Alderholt (SU1112); 10 Jul (T Morris). SY88/MT 0010 East Lulworth (SY8582); 16 Jul (L J Hill).

70.069 *Pelurga comitata* (Linnaeus, 1758) **DARK SPINACH**

Recorded in: SU00; SU11; SY66; SY67; SY88; SY97; SZ07; SZ19. SU00/0000 Wimborne Minster (SU0000); 25 Jul (A H Bicker). SU11/MT 0001 Alderholt (SU1112); 18 Aug (T Morris). SY66/MT 0001 Portland (SY6868); 20 Aug; 26 Aug; 28 Aug (M Cade). SY67/6972 Isle of Portland (SY6972); 17 Aug; 19 Aug (M Cade). SY67/MT 0006 Weymouth (SY6778); 11 Aug (J Oughton). SY88/MT 0001 East Lulworth (SY8583); 13 Aug (L J Hill). SY97/9178 Kimmeridge (SY9178); 2 on 13 Aug (R Arnfield). SZ07/MT 0002 Swanage (SZ0278); 13 Sep (P England).

70.070 *Larentia clavaria* (Haworth, 1809) **MALLOW**

Recorded in: SY49; SY58; SY67; SZ19. SY49/MT 0002 Bothenhampton (SY4892); 2 on 11 Oct (M S Parsons). SY58/5684 Abbotsbury (SY5684); field, 05 Oct (M C Townsend). SY67/6870 Isle of Portland (SY6870); 3 on 08 Oct; 09 Oct; 18 Oct; 23 Oct (D Saunders). SY67/MT 0005 Portland (SY6871); 23 Oct (J Williamson).

- 70.082 *Thera juniperata* (Linnaeus, 1758) **JUNIPER CARPET**
Recorded in: ST60. ST60/6108 Leigh, Wesley House (ST6108); 12 Nov; 16 Nov; 17 Nov (G A Nash).
- 70.092 *Eulithis mellinata* (Fabricius, 1787) **SPINACH**
Recorded in: ST80; SY67; SZ19. ST80/MT 0001 Winterborne Stickland (ST8305); 31 Jul (L de Whalley). SY67/MT 0006 Weymouth (SY6778); 05 Jul (J Oughton).
- 70.098 *Dysstroma citrata* (Linnaeus, 1761) **DARK MARBLED CARPET**
Recorded in: ST91; SZ19. Rushmore Estate Half Hide Coppice Compt F2. 3, 3 (ST9516); 23 Oct (D J Evans). Rushmore Estate Half Hide Coppice Compt F4, 2 (ST9516); 23 Oct (D J Evans).
- 70.104 *Lampropteryx otregiata* (Metcalf, 1917) **DEVON CARPET** Nb
Recorded in: SY88. SY88/MT 0001 East Lulworth (SY8583); 2 on 06 Jun (L J Hill).
- 70.107 *Epirrita dilutata* ([Denis & Schiffermüller], 1775) **NOVEMBER MOTH**
Recorded in: ST91; SY88; SZ19. Rushmore Estate Chase Woods Compt J16. 17, 2 Site H (ST9717); female on 23 Oct, gen. det. (D J Evans). Rushmore Estate Half Hide Coppice Compt F2. 3, 3 (ST9516); 23 Oct, gen. det. (D J Evans). Rushmore Estate Half Hide Coppice Compt F4, 2 (ST9516); 2 on 23 Oct, gen. det. (D J Evans). SY88/MT 0010 East Lulworth (SY8582); 2 males on 18 Oct, gen. det. male on 22 Oct, gen. det. male on 23 Oct, gen. det. 10 males on 30 Oct, gen. det. 10 males on 06 Nov, gen. det. male on 07 Nov, gen. det. 5 males on 11 Nov, gen. det. male on 16 Nov, gen. det. (L J Hill).
- 70.108 *Epirrita christyi* (Allen, 1906) **PALE NOVEMBER MOTH**
Recorded in: ST91. Rushmore Estate Half Hide Coppice Compt F2. 3, 2 Site B (ST9516); male on 23 Oct, gen. det. (D J Evans). Rushmore Estate Half Hide Coppice Compt F2. 3, 2 Site C (ST9516); 23 Oct, gen. det. male on 23 Oct, gen. det. (D J Evans).
- 70.109 *Epirrita autumnata* (Borkhausen, 1794) **AUTUMNAL MOTH**
Recorded in: SY88. SY88/MT 0010 East Lulworth (SY8582); 3 males on 22 Oct, gen. det. 2 males on 30 Oct, gen. det. male on 06 Nov, gen. det. 2 males on 07 Nov, gen. det. 2 males on 16 Nov, gen. det. (L J Hill).
- 70.117 *Minoa murinata* (Scopoli, 1763) **DRAB LOOPER** Nb
Recorded in: ST91. ST91/9015 Stubhampton Bottom (ST9015); field, 2 on 22 May (M S Parsons).
- 70.123 *Triphosa dubitata* (Linnaeus, 1758) **TISSUE** Local
Recorded in: ST82. ST82/8028 Milton on Stour (ST8028); 27 Jul, leg. P H Sterling (J Burge).
- 70.124 *Pareulype berberata* ([Denis & Schiffermüller], 1775) **BARBERRY CARPET** RDB 1
Recorded in: ST80. Field, 6 larval on 11 Sep (M S Parsons).
- 70.134 *Perizoma bifaciata* (Haworth, 1809) **BARRED RIVULET** Local
Recorded in: SY67; SZ07. SY67/MT 0006 Weymouth (SY6778); 12 Aug (J Oughton). SZ07/0377 Durlston Country Park (SZ0377); 2 on 20 Aug; 30 Jul; 01 Aug (R Arnfield).
- 70.137 *Perizoma albulata* ([Denis & Schiffermüller], 1775) **GRASS RIVULET** Local
Recorded in: ST91; SY68; SZ07. ST91/9015 Stubhampton Bottom (ST9015); field, 22 May (M S Parsons). SY68/MT 0008 Weymouth (SY6983); 30 May (D Wainwright). SZ07/MT 0002 Swanage (SZ0278); 09 Jun (P England).
- 70.143 *Pasiphila chloerata* (Mabille, 1870) **SLOE PUG**
Recorded in: SY68. SY68/MT 0002 Chickerell (SY6580); 02 Jun; 09 Jun; 25 Jun; 2 on 27 Jun; 29 Jun (C Pinder).
- 70.150 *Eupithecia linariata* ([Denis & Schiffermüller], 1775) **TOADFLAX PUG**
Recorded in: SY67. SY67/6870 Isle of Portland (SY6870); 25 Jul; 09 Aug (D Saunders).
- 70.166 *Eupithecia simpliciata* (Haworth, 1809) **PLAIN PUG** Local
Recorded in: SY67; SY79; SZ09; SZ19. Branksome, Penn Hill, Frankland Crescent (SZ0591); 20 Aug (J Seawright). SY67/6870 Isle of Portland (SY6870); 23 Jul; 25 Jul; 26 Jul (D Saunders). SY79/MT 0001 Puddletown (SY7695); 20 Aug (H G Wood Homer).
- 70.169 *Eupithecia innotata* (Hufnagel, 1767) **ANGLE-BARRED PUG** Unconfirmed
Recorded in: ST61; SY78; SY79. SY78/MT 0008 West Stafford (SY7289); 25 Aug, leg. E S Rose; 01 Sep, leg. E S Rose

- (E S Rose, A Rose). SY79/MT 0001 Puddletown (SY7695); 29 May (H G Wood Homer). Yetminster, Shearstones (ST6010); 01 Aug (C R Burningham).
- 70.172 *Eupithecia distinctaria* Herrich-Schäffer, 1848 **THYME PUG** Nb
Recorded in: SY67. SY67/6870 Isle of Portland (SY6870); 01 Jun (D Saunders).
- 70.177 *Eupithecia satyrata* (Hübner, [1813]) **SATYR PUG**
Recorded in: SZ09. SZ09/MT 0009 Poole (SZ0097); 23 May (J Fradgley).
- 70.181 *Eupithecia valerianata* (Hübner, [1813]) **VALERIAN PUG** Nb
Recorded in: SY67; SY77. SY67/6870 Isle of Portland (SY6870); 20 May; 23 May (D Saunders). SY77/7072 Isle of Portland (SY7072); field, 24 May (M Cade).
- 70.188 *Eupithecia succenturiata* (Linnaeus, 1758) **BORDERED PUG**
Recorded in: ST90. ST90/9602 Badbury Rings (ST9602); netted, 15 Jul (V Giavarini).
- 70.195 *Chesias legatella* ([Denis & Schiffermüller], 1775) **STREAK**
Recorded in: SY89; SZ09. SY89/8792 Wareham Forest (SY8792); beaten, 24 Oct (V Giavarini). SZ09/MT 0009 Poole (SZ0097); 23 Oct (J Fradgley).
- 70.201 *Trichopteryx polyommata* ([Denis & Schiffermüller], 1775) **BARRED TOOTH-STRIPED** Na
Recorded in: ST81. ST81/8817 Fontmell Down (ST8817); netted, 5 on 23 Mar (A Bryant).
- 70.218 *Chiasmia clathrata* (Linnaeus, 1758) **LATTICED HEATH**
Recorded in: SY66; SY67; SY87; SY97. SY66/MT 0001 Portland (SY6868); 16 Aug; 2 on 17 Aug; 4 on 19 Aug; 20 Aug (M Cade). SY67/6972 Isle of Portland (SY6972); 17 Aug (M Cade). SY87/8979 Tyneham Cap (SY8979); field, 12 Aug (R Arnfield). SY97/9178 Kimmeridge (SY9178); 13 Aug (R Arnfield).
- 70.221 *Cepphis advenaria* (Hübner, 1790) **LITTLE THORN** Nb
Recorded in: SY78; SY79; SY88; SY89; SZ09. Broadmayne, Spring Gardens (SY7387); 19 Jun (P Bruce-Jones). SY79/MT 0001 Puddletown (SY7695); 01 Jun (H G Wood Homer). SY88/MT 0001 East Lulworth (SY8583); 06 Jun; 2 on 20 Jun (L J Hill). SY88/MT 0010 East Lulworth (SY8582); 21 May (L J Hill). SY89/8193 Briantspuddle (SY8193); 09 Jun; field, 09 Jun (J D McMillan). SZ09/MT 0009 Poole (SZ0097); 25 May (J Fradgley).
- 70.233 *Ennomos quercinaria* (Hufnagel, 1767) **AUGUST THORN** Local
Recorded in: ST80; ST82; SU00; SY39; SY78; SY88; SY98; SZ19. Broadmayne, Spring Gardens (SY7387); 11 Aug (P Bruce-Jones). Norden (SY9483); 18 Aug (J White). Norden, Louern (SY9483); 18 Aug (J White). ST80/8304 Winterborne Stickland (ST8304); 08 Aug; 18 Aug; 19 Aug (W W Bown). ST82/8028 Milton on Stour (ST8028); 20 Aug, leg. P H Sterling (J Burge). SU00/0102 Grange (SU0102); 03 Aug; 04 Aug; 2 on 05 Aug (R Payne). SY39/MT 0001 Charmouth (SY3693); 22 Aug (G Sell). SY78/MT 0008 West Stafford (SY7289); 18 Aug, leg. E S Rose (E S Rose, A Rose). SY88/MT 0010 East Lulworth (SY8582); 11 Aug; 2 on 13 Aug; 20 Aug; 21 Aug; 2 on 04 Sep (L J Hill).
- 70.236 *Ennomos erosaria* ([Denis & Schiffermüller], 1775) **SEPTEMBER THORN**
Recorded in: SU01; SU11; SZ19. SU01/0212 Wimborne St Giles (SU0212); 01 Sep (J C Winterbottom). SU11/MT 0001 Alderholt (SU1112); 3 on 20 Jul; 21 Jul; 2 on 24 Jul; 3 on 25 Jul; 2 on 05 Aug; 4 on 08 Aug; 10 Aug; 17 Aug; 18 Aug; 26 Aug; 15 Sep; 29 Sep; 06 Oct; 08 Oct; 24 Feb; 22 Mar; 23 Mar (T Morris).
- 70.246 *Apocheima hispidaria* ([Denis & Schiffermüller], 1775) **SMALL BRINDLED BEAUTY** Local
Recorded in: ST61; SU11; SZ19. Yetminster, Shearstones (ST6010); 23 Feb; 24 Feb; 25 Feb; 27 Feb; 28 Feb (C R Burningham).
- 70.262 *Selidosema brunnearia* (Villers, 1789) **BORDERED GREY** Na
Recorded in: SU00; SY98; SY99. SU00/0704 Holt Heath (SU0704); field, male on 16 Aug (M S Parsons). SY98/9685 Hartland Moor (SY9685); 23 Aug (R Arnfield). SY99/9090 Wareham Forest (SY9091); 14 Oct; 23 May (V Giavarini).
- 70.267 *Hypomecis roboraria* ([Denis & Schiffermüller], 1775) **GREAT OAK BEAUTY** Nb
Recorded in: SU00. SU00/0509 Boys Wood (SU0509); 5 on 25 Jun (V Giavarini).
- 70.287 *Charissa obscurata* ([Denis & Schiffermüller], 1775) **ANNULET** Local
Recorded in: SY39; SY67; SY89; SZ19. SY39/3492 Lyme Regis, Charmouth Road car park (SY3492); 3 on 22 Aug (P

- Major). SY39/MT 0001 Charmouth (SY3693); 10 Aug (G Sell). SY67/6870 Isle of Portland (SY6870); 05 Aug; 11 Aug (D Saunders). SY89/8893 Bloxworth Heath (SY8893); 23 Jul, leg. M S Parsons (M S Parsons, L J Hill, A O J Evans).
- 70.306 *Chlorissa viridata* (Linnaeus, 1758) **SMALL GRASS EMERALD** Na
Recorded in: SU00. SU00/0704 Holt Heath (SU0704); field, larval on 16 Aug (M S Parsons).
- 71.006 *Furcula bicuspis* (Borkhausen, 1790) **ALDER KITTEN** Local
Recorded in: SY39; SY49. SY39/MT 0001 Charmouth (SY3693); 28 May (G Sell). SY49/MT 0002 Bothenhampton (SY4892); 24 May (M S Parsons).
- 71.023 *Odontosia carmelita* (Esper, [1798]) **SCARCE PROMINENT** Local
Recorded in: SU00; SY88. SU00/0509 Boys Wood (SU0509); 01 May (V Giavarini). SY88/MT 0001 East Lulworth (SY8583); 02 May; 18 Jul (L J Hill).
- 72.006 *Hypena obsitalis* (Hübner, [1813]) **BLOXWORTH SNOUT** RDB3
Recorded in: SY66; SY67. Portland, Southwell Road, Limestone Cottage (SY6870); 26 Sep (B Coleman). SY66/MT 0001 Portland (SY6868); 2 on 13 Nov (M Cade). SY67/MT 0006 Weymouth (SY6778); 07 Apr; field, larval on 14 Sep (J Oughton). Weymouth, Portway Close (SY6778); 26 Jul (P Rendell).
- 72.007 *Hypena crassalis* (Fabricius, 1787) **BEAUTIFUL SNOUT** Local
Recorded in: SY79. SY79/MT 0001 Puddletown (SY7695); 27 Jun; 28 Jun (H G Wood Homer).
- 72.009 *Leucoma salicis* (Linnaeus, 1758) **WHITE SATIN** Local
Recorded in: ST80; SU11. ST80/8304 Winterborne Stickland (ST8304); 14 Aug (W W Bown). SU11/MT 0001 Alderholt (SU1112); 20 Jul (T Morris).
- 72.016 *Dicallomera fascelina* (Linnaeus, 1758) **DARK TUSSOCK** Local
Recorded in: SU10; SY98. SY98/9688 Arne (SY9688); field, 14 Jun; field, 12 Jun (C Moody).
- 72.025 *Parasemia plantaginis* (Linnaeus, 1758) **WOOD TIGER** Local
Recorded in: ST60; ST70; ST81; SY68; SY69; SY98. Fontmell Down (Comp B) (ST8716); field, 15 Jul (DWT staff). Higher Hill (SY7202); field, 3 on 19 Jun (M S Warren). ST60/6000 Lankham Bottom (ST6000); field, 29 May; field, 2 on 18 Jun; field, 3 on 18 Jun; field, 2 on 29 May; field, 8 on 18 Jun (C R Burningham). ST60/6002 Lankham Bottom (ST6002); field, 5 on 18 Jun; field, 3 on 18 Jun (C R Burningham). ST60/6003 Lankham Bottom (ST6003); field, 29 May; field, 2 on 18 Jun; field, 3 on 18 Jun; field, 2 on 29 May; field, 8 on 18 Jun (C R Burningham). ST60/6100 Lankham Bottom (ST6100); field, 29 May; field, 18 Jun; field, 6 on 25 Jun; field, 4 on 29 May; field, 2 on 18 Jun; field, 2 on 29 May (C R Burningham). ST60/6103 Batcombe Hill (ST6103); field, 29 May; field, 18 Jun; field, 4 on 29 May; field, 2 on 18 Jun; field, 2 on 29 May (C R Burningham). Stonehill Down (SY9282); field, 3 on 24 May (DWT staff). SY68/6788 Maiden Castle (SY6788); field, 3 on 09 Jun (S Ellis). SY69/6099 Lankham Bottom (SY6099); field, 5 on 18 Jun; field, 3 on 18 Jun (C R Burningham).
- 72.047 *Eilema caniola* (Hübner, [1808]) **HOARY FOOTMAN** Nb
Recorded in: SY39; SY49; SY66; SY67; SY78; SY88; SY97; SY98; SZ07. Broadmayne, Spring Gardens (SY7387); 02 Sep (P Bruce-Jones). SY39/MT 0001 Charmouth (SY3693); 2 on 17 Aug; 19 Aug; 20 Aug; 08 Sep (G Sell). SY49/MT 0002 Bothenhampton (SY4892); 23 Aug (M S Parsons). SY66/MT 0001 Portland (SY6868); 28 Aug; 31 Aug (M Cade). SY67/6870 Isle of Portland (SY6870); 27 Jul; 17 Aug; 19 Aug (D Saunders). SY88/MT 0001 East Lulworth (SY8583); 03 Sep (L J Hill). SY88/MT 0010 East Lulworth (SY8582); 03 Sep; 10 Sep (L J Hill). SY97/9178 Kimmeridge (SY9178); 17 Aug (R Arnfield). SY98/9089 Cold Harbour (SY9089); 2 on 18 Aug (P H Sterling). SY98/9687 Arne (SY9687); 10 Aug (R Arnfield). SZ07/0377 Durlston Country Park (SZ0377); 20 Aug (R Arnfield).
- 72.060 *Hypenodes humidalis* Doubleday, 1850 **MARSH OBLIQUE-BARRED** Nb
Recorded in: SY89. SY89/8892 Bloxworth Heath (SY8892); 2 on 25 Jul (M S Parsons).
- 72.066 *Parascotia fuliginaria* (Linnaeus, 1761) **WAVED BLACK** Nb
Recorded in: SU11. SU11/MT 0001 Alderholt (SU1112); 24 Jul; 08 Aug (T Morris).
- 72.076 *Catocala fraxini* (Linnaeus, 1758) **CLIFDEN NONPAREIL** Migrant
Recorded in: ST61; SU00; SY79; SZ29. SU00/0509 Boys Wood (SU0509); 18 Oct (V Giavarini). SY79/MT 0001 Puddletown (SY7695); 03 Oct (H G Wood Homer). SY79/MT 0002 Tolpuddle (SY7994); 12 Oct; 23 Oct (J Francis).
- 72.081 *Catocala sponsa* (Linnaeus, 1767) **DARK CRIMSON UNDERWING** RDB2
Recorded in: SY68. SY68/MT 0001 Dorchester (SY6889); 20 Aug, leg. J E Down (J E Down, M Down).

- 73.003 *Trichoplusia ni* (Hübner, [1803]) **NI MOTH** Migrant
Recorded in: SY79. SY79/MT 0001 Puddletown (SY7695); 19 Aug (H G Wood Homer).
- 73.010 *Macdunnoughia confusa* (Stephens, 1850) **DEWICK'S PLUSIA** Rare migrant
Recorded in: SY66; SZ07. SY66/MT 0001 Portland (SY6868); 05 Aug (M Cade). SZ07/005/41 South Dorset Coast (SMU 41) (SZ0377); field, 19 Oct (S J Breeze).
- 73.031 *Tyta luctuosa* ([Denis & Schiffermüller], 1775) **FOUR-SPOTTED** Na
Recorded in: SY66; SY67. SY66/MT 0001 Portland (SY6868); field, 28 Jun (M Cade). SY67/6870 Isle of Portland (SY6870); 27 May; 03 Aug (D Saunders).
- 73.033 *Diloba caeruleocephala* (Linnaeus, 1758) **FIGURE OF EIGHT**
Recorded in: ST60; ST80. ST60/6108 Leigh, Wesley House (ST6108); 17 Oct (G A Nash). ST80/MT 0001 Winterborne Stickland (ST8305); 20 Oct; 5 on 21 Oct; 22 Oct (L de Whalley).
- 73.038 *Acronicta psi* (Linnaeus, 1758) **GREY DAGGER**
Recorded in: SY78; SY88; SZ09; SZ19. Parkstone, Links Road (SZ0490); field, larval on 21 Jul (J Seawright). SY78/7084 Sutton Poyntz (SY7084); field, larval on 16 Sep (P Shreeves). SY88/MT 0010 East Lulworth (SY8582); 5 males on 09 Aug, gen. det. female on 11 Aug, gen. det. (L J Hill). Warmwell Leisure Park (SY7687); field, larval on 06 Oct (P H Sterling).
- 73.050 *Cucullia absinthii* (Linnaeus, 1761) **WORMWOOD** Nb
Recorded in: SY66. SY66/MT 0001 Portland (SY6868); 26 Jul (M Cade).
- 73.065 *Asteroscopus sphinx* (Hufnagel, 1766) **SPRAWLER**
Recorded in: ST60; ST61; SY88. ST60/6108 Leigh, Wesley House (ST6108); 24 Oct (G A Nash). SY88/MT 0010 East Lulworth (SY8582); 06 Nov (L J Hill). Yetminster, Shearstones (ST6010); 2 on 25 Oct (C R Burningham).
- 73.070 *Pyrrhia umbra* (Hufnagel, 1766) **BORDERED SALLOW** Local
Recorded in: SY39; SY67; SZ07. SY39/MT 0001 Charmouth (SY3693); 24 May; 25 May; 27 May; 30 May; 31 May; 04 Jun; 05 Jun; 20 Jun; 24 Jun; 26 Jun; 27 Jun; 29 Jun; 02 Jul; 04 Jul; 05 Jul; 07 Jul; 08 Jul; 17 Jul; 21 Jul; 26 Jul; 28 Jul (G Sell). SY67/6870 Isle of Portland (SY6870); 05 Jul; 25 Jul; 19 Aug; 04 Sep (D Saunders). SY67/MT 0006 Weymouth (SY6778); 19 Jul (J Oughton). SZ07/MT 0002 Swanage (SZ0278); 29 Jun; 11 Jul; 24 Jul (P England).
- 73.074 *Heliothis peltigera* ([Denis & Schiffermüller], 1775) **BORDERED STRAW** Migrant
Recorded in: SU11; SY66; SY67; SY79; SZ08. SU11/MT 0001 Alderholt (SU1112); 26 Jun (T Morris). SY66/MT 0001 Portland (SY6868); 27 Jun (M Cade). SY67/6972 Isle of Portland (SY6972); 10 Aug (M Cade). SY79/MT 0001 Puddletown (SY7695); 08 Oct (H G Wood Homer).
- 73.076 *Helicoverpa armigera* (Hübner, [1808]) **SCARCE BORDERED STRAW** Migrant
Recorded in: SU11; SY39; SY66; SY67; SY79; SZ07; SZ09. SU11/MT 0001 Alderholt (SU1112); 2 on 22 Oct (T Morris). SY39/MT 0001 Charmouth (SY3693); 04 Sep; 07 Oct; 2 on 08 Oct; 2 on 09 Oct (G Sell). SY66/MT 0001 Portland (SY6868); 19 Aug; 2 on 28 Sep; 10 Oct; 2 on 23 Oct (M Cade). SY67/MT 0006 Weymouth (SY6778); 23 Oct (J Oughton). SY79/MT 0001 Puddletown (SY7695); 19 Aug; 24 Oct (H G Wood Homer). SZ07/0377 Durlston Country Park (SZ0377); 28 Sep (S Whitehouse). SZ07/MT 0002 Swanage (SZ0278); 2 on 17 Aug; 19 Oct (P England). SZ09/MT 0009 Poole (SZ0097); 23 Oct; 24 Oct (J Fradgley).
- 73.082 *Cryphia algae* (Fabricius, 1775) **TREE-LICHEN BEAUTY** Rare migrant
Recorded in: SZ07. SZ07/MT 0002 Swanage (SZ0278); 11 Aug, leg. T A Box (P England).
- 73.086 *Pseudeustrotia candidula* ([Denis & Schiffermüller], 1775) **SHINING MARBLED** Vagrant/Accidental
Recorded in: ST30. Tytherleigh, near Chardstock (ST3103); 18 Aug **New VC Record**. (A Jenkins).
- 73.087 *Spodoptera exigua* (Hübner, [1808]) **SMALL MOTTLED WILLOW** Migrant
Recorded in: ST80; SY39; SY67; SY79; SZ07. ST80/8304 Winterborne Stickland (ST8304); 7 on 30 Jul (W W Bown). SY39/MT 0001 Charmouth (SY3693); 25 Aug (G Sell). SY67/6870 Isle of Portland (SY6870); 19 Aug; 02 Sep; 03 Sep (D Saunders). SY79/MT 0001 Puddletown (SY7695); 25 Jun (H G Wood Homer). SZ07/0377 Durlston Country Park (SZ0377); 01 Jul (S Breeze).
- 73.093 *Caradrina kadenii* (Freyer, [1836]) **CLANCY'S RUSTIC** Migrant
Recorded in: SY49; SY66; SY67; SY68; SY79; SY88. SY49/4291 Seatown (SY4291); 16 Jul (G Carr). SY49/MT 0002 Bothenhampton (SY4892); 24 Oct (M S Parsons). SY66/MT 0001 Portland (SY6868); 09 Jul (M Cade). SY67/6870 Isle

- of Portland (SY6870); 4 on 08 Oct; 23 Oct (D Saunders). SY68/MT 0002 Chickerell (SY6580); 02 Oct (C Pinder). SY79/MT 0001 Puddletown (SY7695); 22 Oct (H G Wood Homer). SY88/MT 0010 East Lulworth (SY8582); 18 Oct (L J Hill).
- 73.100 *Chilodes maritima* (Tauscher, 1806) **SILKY WAINSCOT** Local
Recorded in: ST71; SU10; SY78; SY99. Lytchett Bay, Lytchett Way (SY9792); 06 Aug (N J Hull). ST71/7817 Walton Elm (ST7817); 11 Aug (J Fradgley). SY78/MT 0008 West Stafford (SY7289); 2 on 14 Jul, leg. E S Rose (E S Rose, A Rose).
- 73.104 *Athetis hospes* (Freyer, [1831]) **PORTER'S RUSTIC** Vagrant/Accidental
Recorded in: SY97. SY97/9178 Kimmeridge (SY9178); 18 Aug (R Arnfield).
- 73.119 *Helotropha leucostigma* (Hübner, [1808]) **CRESCENT** Local
Recorded in: ST80; SY49; SY67; SY78; SY98. ST80/8304 Winterborne Stickland (ST8304); 08 Jul; 12 Jul; 14 Jul; 15 Jul (W W Bown). SY49/MT 0002 Bothenhampton (SY4892); 20 Aug (M S Parsons). SY67/MT 0004 Weymouth (SY6779); 08 Jul, leg. L Phillips; 23 Aug, leg. L Phillips; 30 Aug, leg. L Phillips (L Phillips, C Emblem-English). SY78/MT 0008 West Stafford (SY7289); 21 Jul, leg. E S Rose (E S Rose, A Rose). SY98/9687 Arne (SY9687); 3 on 10 Aug (R Arnfield). SY98/MT 0004 Wareham Town (SY9287); 2 on 22 Jul; 3 on 25 Jul (B D D Young).
- 73.128 *Amphipoea oculea* (Linnaeus, 1761) **EAR MOTH**
Recorded in: SU10; SY88. SY88/MT 0010 East Lulworth (SY8582); male on 15 Aug, gen. det. (L J Hill).
- 73.135 *Sedina buettneri* (Hering, 1858) **BLAIR'S WAINSCOT** RDB1
Recorded in: SY59; SY68; SY79. 2 females on 08 Oct, leg. P H Sterling (P H Sterling, M S Parsons). Netted, 10 Oct (V Giavarini). SY68/MT 0002 Chickerell (SY6580); 23 Oct (C Pinder). SY79/MT 0001 Puddletown (SY7695); 11 Oct (H G Wood Homer).
- 73.137 *Arenostola phragmitidis* (Hübner, [1803]) **FEN WAINSCOT** Local
Recorded in: SY39; SZ09; SZ19. SY39/MT 0001 Charmouth (SY3693); 08 Jul (G Sell). SZ09/MT 0006 Poole (SZ0291); 31 Jul (V Giavarini).
- 73.145 *Photodes fluxa* (Hübner, [1809]) **MERE WAINSCOT** Nb
Recorded in: SY79. SY79/MT 0001 Puddletown (SY7695); 25 Jul (H G Wood Homer).
- 73.151 *Globia sparganii* (Esper, 1789) **WEBB'S WAINSCOT** Nb
Recorded in: SY67. SY67/MT 0004 Weymouth (SY6779); 30 Aug, leg. L Phillips (L Phillips, C Emblem-English).
- 73.164 *Apamea sublustris* (Esper, 1788) **REDDISH LIGHT ARCHES** Local
Recorded in: SZ07. SZ07/0377 Durlston Country Park (SZ0377); 23 Jun; 01 Jul; 3 on 04 Jul (S Breeze). SZ07/MT 0002 Swanage (SZ0278); 04 Jul; 10 Jul (P England).
- 73.169 *Mesapamea secalis* (Linnaeus, 1758) **COMMON RUSTIC**
Recorded in: ST91; SU10; SY88; SZ19. Rushmore Estate Half Hide Coppice Compt F4, 2 (ST9516); male on 17 Jul, gen. det. (D J Evans). SY88/MT 0010 East Lulworth (SY8582); 30 Jun, gen. det. 09 Jul, gen. det. 2 males on 15 Jul, gen. det. 4 males on 17 Jul, gen. det. 17 Jun, gen. det. 18 Jun, gen. det. 2 on 28 Jun, gen. det. 01 Jul, gen. det. male on 05 Jul, gen. det. 2 males on 15 Jul, gen. det. 2 males on 17 Jul, gen. det. 29 Jun, gen. det. (L J Hill).
- 73.175 *Oligia versicolor* (Borkhausen, 1792) **RUFOUS MINOR** Local
Recorded in: SY67; SY88. SY67/MT 0001 Weymouth (SY6679); 27 May, gen. det. (P H Sterling). SY88/MT 0010 East Lulworth (SY8582); 25 Jun, gen. det. 01 Jul, gen. det. (L J Hill).
- 73.178 *Leucochlaena oditis* (Hübner, [1822]) **BEAUTIFUL GOTHIC** RDB3
Recorded in: SY66; SY67; SZ07. Portland, Southwell Road, Limestone Cottage (SY6870); 23 Sep; 25 Sep; 26 Sep; 2 on 27 Sep (B Coleman). SY66/6868 Portland (SY6868); 11 on 01 Oct (M C Townsend). SY67/6870 Isle of Portland (SY6870); 08 Sep; 11 Sep; 18 Sep; 19 Sep; 27 Sep (D Saunders). SY67/MT 0005 Portland (SY6871); 20 Sep; 4 on 29 Sep (J Williamson). SZ07/0377 Durlston Country Park (SZ0377); 23 Oct; 2 on 28 Sep; 02 Oct (S Whitehouse).
- 73.188 *Agrochola helvola* (Linnaeus, 1758) **FLOUNCED CHESTNUT**
Recorded in: SY39; SY58; SZ19. SY39/MT 0001 Charmouth (SY3693); 09 Oct (G Sell). SY58/5388 Puncknowle (SY5388); 19 Oct (M Hetherington).

- 73.191 *Agrochola haematidea* (Duponchel, 1827) **SOUTHERN CHESTNUT RDB2**
Recorded in: SU11. SU11/MT 0001 Alderholt (SU1112); 08 Oct (T Morris).
- 73.197 *Conistra rubiginea* ([Denis & Schiffermüller], 1775) **DOTTED CHESTNUT Nb**
Recorded in: SY39; SY78; SY79; SY88; SY98; SZ07; SZ09. Broadmayne, Spring Gardens (SY7387); 08 Mar (P Bruce-Jones). SY39/MT 0001 Charmouth (SY3693); 22 Mar (G Sell). SY79/MT 0001 Puddletown (SY7695); 27 Feb; 19 Mar (H G Wood Homer). SY79/MT 0002 Tolpuddle (SY7994); 28 Mar (J Francis). SY88/MT 0010 East Lulworth (SY8582); 19 Mar; 21 Mar (L J Hill). SZ07/0377 Durlston Country Park (SZ0377); 18 Mar; 7 on 23 Mar (S Breeze). SZ09/MT 0012 Poole (SZ0095); 23 Oct (A H Bicker).
- 73.200 *Lithophane semibrunnea* (Haworth, 1809) **TAWNY PINION Local**
Recorded in: SY79. SY79/MT 0001 Puddletown (SY7695); 23 Mar; 27 Mar; 22 Oct (H G Wood Homer).
- 73.213 *Ipimorpha subtusa* ([Denis & Schiffermüller], 1775) **OLIVE Local**
Recorded in: ST72; SU00; SU01; SY79; SY98. ST72/MT 0001 Gillingham (ST7925); 09 Aug (G R Hopkins). SU00/0509 Boys Wood (SU0509); 25 Sep (V Giavarini). SU01/0212 Wimborne St Giles (SU0212); 10 Aug; 17 Aug (J C Winterbottom). SY79/MT 0001 Puddletown (SY7695); 17 Aug (H G Wood Homer). SY98/9288 Church Knowle (SY9288); 02 Aug (R W Adams).
- 73.223 *Dryobota labecula* (Esper, 1788) **OAK RUSTIC Rare migrant**
Recorded in: SZ07. SZ07/0377 Durlston Country Park (SZ0377); 9 on 23 Oct; male on 22 Oct; female on 22 Oct (S Whitehouse). SZ07/MT 0002 Swanage (SZ0278); 2 on 20 Oct; 2 on 21 Oct; 7 on 23 Oct; 24 Oct; 3 on 28 Oct; 4 on 12 Nov; 2 on 14 Nov; 20 Nov; 23 Nov (P England). SZ07/0377 Durlston Country Park (SZ0377); 2 males on 28 Sep (S Whitehouse).
- 73.229 *Trigonophora flammea* (Esper, 1785) **FLAME BROCADE Migrant**
Recorded in: SY66; SY67; SY77. SY66/MT 0001 Portland (SY6868); 19 Oct (M Cade). SY67/6870 Isle of Portland (SY6870); 18 Oct; 23 Oct; 24 Oct; 23 Oct (D Saunders). SY67/6970 Isle of Portland (SY6970); 20 Oct (M Cade). SY67/6972 Isle of Portland (SY6972); 04 Oct; 2 on 08 Oct; 18 Oct; 19 Oct; 22 Oct (M Cade). SY77/7072 Isle of Portland (SY7072); 04 Oct (M C Townsend).
- 73.230 *Aporophyla australis* (Boisduval, 1829) **FEATHERED BRINDLE Nb**
Recorded in: SY58; SY67; SY77; SZ07. Portland, Southwell Road, Limestone Cottage (SY6870); 3 on 23 Sep; 3 on 24 Sep; 25 Sep; 26 Sep (B Coleman). SY58/5388 Puncknowle (SY5388); 3 on 17 Oct; field, 18 Oct; 19 Oct; field, 20 Oct (M Hetherington). SY67/6870 Isle of Portland (SY6870); 06 Sep; 08 Sep; 11 Sep; 12 Sep; 4 on 13 Sep; 5 on 14 Sep; 5 on 15 Sep; 4 on 16 Sep; 3 on 17 Sep; 4 on 19 Sep; 3 on 20 Sep; 4 on 21 Sep; 22 Sep; 6 on 26 Sep; 2 on 27 Sep; 4 on 28 Sep; 29 Sep; 2 on 30 Sep; 3 on 03 Oct; 3 on 06 Oct; 3 on 07 Oct; 6 on 08 Oct; 4 on 09 Oct; 4 on 10 Oct; 12 Oct; 3 on 13 Oct; 14 Oct (D Saunders). SY67/MT 0004 Weymouth (SY6779); 04 Sep, leg. L Phillips (L Phillips, C Emblem-English). SY67/MT 0005 Portland (SY6871); 2 on 20 Sep; 29 Sep; 07 Oct; 08 Oct (J Williamson). SY77/7072 Isle of Portland (SY7072); 04 Oct (M C Townsend). SZ07/0377 Durlston Country Park (SZ0377); 26 Aug; 28 Aug; 16 on 15 Sep; 13 on 16 Sep; 15 on 06 Oct; 2 on 23 Oct; 6 on 28 Sep; 02 Oct (S Breeze). SZ07/MT 0002 Swanage (SZ0278); 09 Sep; 4 on 22 Sep; 2 on 27 Sep; 2 on 30 Sep (P England).
- 73.234 *Dasypolia templi* (Thunberg, 1792) **BRINDLED OCHRE Local**
Recorded in: SY88; SZ07; SZ09. SY88/MT 0010 East Lulworth (SY8582); 18 Oct (L J Hill). SZ07/0377 Durlston Country Park (SZ0377); 23 Oct (S Whitehouse). SZ09/MT 0009 Poole (SZ0097); 20 Oct (J Fradgley).
- 73.237 *Polymixis flavicincta* ([Denis & Schiffermüller], 1775) **LARGE RANUNCULUS Local**
Recorded in: ST40; ST60; ST61; SY39; SY49; SY58; SY67; SY77. ST40/MT 0001 Beaminster (ST4701); 10 Oct (S Philp). ST60/6108 Leigh, Wesley House (ST6108); 15 Sep; 16 Sep (G A Nash). SY39/MT 0001 Charmouth (SY3693); 21 Sep (G Sell). SY49/MT 0002 Bothenhampton (SY4892); 09 Sep; 14 Sep (M S Parsons). SY58/5388 Puncknowle (SY5388); outside light, 27 Sep; field, 27 Sep (M Hetherington). SY58/5789 Whatcombe Down (SY5789); 24 Sep (N Parsons). SY67/6870 Isle of Portland (SY6870); 15 Sep; 29 Sep; 07 Oct; 10 Oct; 08 Nov (D Saunders). SY67/MT 0005 Portland (SY6871); 29 Sep (J Williamson). SY77/7072 Isle of Portland (SY7072); 04 Oct (M C Townsend). Yetminster, Shearstones (ST6010); 2 on 28 Sep; 29 Sep (C R Burningham).
- 73.243 *Orthosia miniosa* ([Denis & Schiffermüller], 1775) **BLOSSOM UNDERWING Local**
Recorded in: SU11. SU11/MT 0001 Alderholt (SU1112); 27 Mar (T Morris).
- 73.246 *Orthosia populeti* (Fabricius, 1781) **LEAD-COLOURED DRAB Local**
Recorded in: SU00; SU11; SY88; SZ19. SU00/0509 Boys Wood (SU0509); 3 on 20 Mar (V Giavarini). SU11/MT 0001 Alderholt (SU1112); 20 Mar; 23 Mar; 27 Mar; 30 Mar (T Morris). SY88/MT 0001 East Lulworth (SY8583); 28 Mar (L J Hill).

- 73.254 *Cerapteryx graminis* (Linnaeus, 1758) **ANTLER MOTH**
Recorded in: SY66; SY67. SY66/MT 0001 Portland (SY6868); 21 Aug (M Cade). SY67/6870 Isle of Portland (SY6870); 06 Aug; 21 Aug; 22 Aug (D Saunders). SY67/6871 Isle of Portland (SY6871); 19 Aug (M Cade). SY67/MT 0005 Portland (SY6871); 20 Aug (J Williamson).
- 73.255 *Anarta trifolii* (Hufnagel, 1766) **NUTMEG**
Recorded in: ST80; SU11; SY39; SY49; SY67; SY68; SY79; SY97; SY99; SZ19. ST80/MT 0001 Winterborne Stickland (ST8305); 30 Aug (L de Whalley). SU11/MT 0001 Alderholt (SU1112); 2 on 26 May; 30 May (T Morris). SY39/MT 0001 Charmouth (SY3693); 20 Jun; 21 Jun; 16 Jul; 23 Aug (G Sell). SY49/MT 0002 Bothenhampton (SY4892); 26 Jun (M S Parsons). SY67/MT 0006 Weymouth (SY6778); 12 May; 01 Jun; 26 Jul; 08 Aug; 09 Aug; 06 Sep (J Oughton). SY68/MT 0001 Dorchester (SY6889); 25 May, leg. J E Down; 04 Aug, leg. J E Down; 10 Aug, leg. J E Down (J E Down, M Down). SY79/MT 0001 Puddletown (SY7695); 07 Aug; 2 on 08 Aug (H G Wood Homer). SY97/9178 Kimmeridge (SY9178); 13 Aug; 16 Aug (R Arnfield). SY99/9795 Corfe Mullen (SY9795); 18 May; 5 on 24 May (R W Steedman).
- 73.266 *Lacanobia suasa* ([Denis & Schiffermüller], 1775) **DOG'S TOOTH** Local
Recorded in: SY67; SY98; SZ19. SY67/MT 0006 Weymouth (SY6778); 17 Aug (J Oughton). SY98/MT 0004 Wareham Town (SY9287); 05 Jun; 17 Aug (B Young).
- 73.286 *Hadena perplexa* ([Denis & Schiffermüller], 1775) **TAWNY SHEARS**
Recorded in: ST40; ST91; SY67; SY97. ST40/MT 0001 Beaminster (ST4701); 08 Jul (S Philp). ST91/9914 Canada Farm (ST9914); field, 26 Aug (A Bryant). SY67/MT 0006 Weymouth (SY6778); 31 May (J Oughton). SY97/9178 Kimmeridge (SY9178); 4 on 13 Aug; 14 Aug; 23 Aug (R Arnfield).
- 73.290 *Mythimna conigera* ([Denis & Schiffermüller], 1775) **BROWN-LINE BRIGHT-EYE**
Recorded in: ST80; SY67; SY78. ST80/8304 Winterborne Stickland (ST8304); 08 Jul; 17 Jul (W W Bown). ST80/MT 0001 Winterborne Stickland (ST8305); 2 on 22 Jul; 2 on 31 Jul (L de Whalley). SY67/6870 Isle of Portland (SY6870); 13 Jul; 14 Jul; 16 Jul; 17 Jul; 18 Jul; 20 Jul; 21 Jul; 22 Jul; 23 Jul; 4 on 25 Jul; 12 on 26 Jul; 6 on 27 Jul; 28 Jul; 31 Jul; 2 on 01 Aug; 03 Aug; 6 on 04 Aug; 4 on 05 Aug; 06 Aug; 07 Aug; 6 on 08 Aug; 15 on 09 Aug; 4 on 10 Aug; 2 on 12 Aug; 2 on 13 Aug; 2 on 17 Aug; 23 Aug (D Saunders). SY67/MT 0005 Portland (SY6871); 25 Jul; 2 on 08 Aug (J Williamson). SY78/MT 0007 Weymouth (SY7083); 21 Jul; 2 on 23 Jul (J Campbell). SY78/MT 0008 West Stafford (SY7289); 28 Jul, leg. E S Rose (E S Rose, A Rose).
- 73.291 *Mythimna favicolor* (Barrett, 1896) **MATHEW'S WAINSCOT** Nb
Recorded in: SY79. SY79/MT 0001 Puddletown (SY7695); 05 Jul (H G Wood Homer).
- 73.296 *Mythimna unipuncta* (Haworth, 1809) **WHITE-SPECK** Migrant
Recorded in: SY66; SY67; SY88. SY66/MT 0001 Portland (SY6868); 06 Oct; 14 Oct (M Cade). SY67/MT 0006 Weymouth (SY6778); 27 Sep (J Oughton). SY88/MT 0010 East Lulworth (SY8582); 19 Nov (L J Hill).
- 73.300 *Mythimna l-album* (Linnaeus, 1767) **L-ALBUM WAINSCOT** Nb
Recorded in: ST80; SY39; SY49; SY67; SY68; SY77; SY88; SZ07; SZ09; SZ19. Branksome, Penn Hill, Frankland Crescent (SZ0591); 15 Sep (J Seawright). Dorset (SY3693); 21 Jun (G Sell). Portland, Southwell Road, Limestone Cottage (SY6870); 2 on 24 Sep; 2 on 26 Sep; 2 on 27 Sep (B Coleman). ST80/MT 0001 Winterborne Stickland (ST8305); 04 Jul; 05 Jul; 06 Jul; 09 Jul; 20 Jul (L de Whalley). SY39/MT 0001 Charmouth (SY3693); 2 on 31 May; 2 on 02 Jun; 20 Jun; 21 Jun; 22 Jun; 23 Jun; 24 Jun; 2 on 25 Jun; 4 on 26 Jun; 27 Jun; 29 Jun; 30 Jun; 01 Jul; 02 Jul; 03 Jul; 04 Jul; 05 Jul; 06 Jul; 07 Jul; 08 Jul; 09 Jul; 10 Jul; 12 Jul; 14 Jul; 16 Jul; 17 Jul; 19 Jul; 27 Jul; 03 Sep; 09 Sep; 11 Sep; 3 on 16 Sep; 20 Sep; 21 Sep; 27 Sep; 01 Oct; 02 Oct; 07 Oct; 2 on 08 Oct; 09 Oct; 3 on 18 Oct (G Sell). SY49/4291 Seatown (SY4291); 16 Jul (G Carr). SY49/MT 0002 Bothenhampton (SY4892); 15 Sep; 27 Sep; 30 Sep; 10 Oct; 23 Oct (M S Parsons). SY67/6870 Isle of Portland (SY6870); 09 Jun; 2 on 11 Jun; 12 Jun; 01 Jul; 10 Jul; 21 Jul; 25 Jul; 31 Jul; 08 Aug; 02 Sep; 19 Sep; 2 on 20 Sep; 21 Sep; 4 on 22 Sep; 26 Sep; 27 Sep; 28 Sep; 29 Sep; 06 Oct; 08 Oct; 2 on 14 Oct; 20 Oct; 3 on 21 Oct; 5 on 22 Oct; 7 on 23 Oct; 15 Nov (D Saunders). SY67/MT 0004 Weymouth (SY6779); 13 Oct, leg. L Phillips (L Phillips, C Emblem-English). SY67/MT 0005 Portland (SY6871); 29 Sep; 19 Oct (J Williamson). SY67/MT 0006 Weymouth (SY6778); 27 Jun; 04 Jul; 22 Sep; 10 Oct (J Oughton). SY68/MT 0002 Chickerell (SY6580); 25 May; 26 May; 28 Jun; 29 Jun; 05 Jul; 2 on 09 Jul; 16 Jul; 07 Oct; 10 Oct (C Pinder). SY77/7072 Isle of Portland (SY7072); 04 Oct (M C Townsend). SY88/MT 0001 East Lulworth (SY8583); 08 Oct; 22 Oct (L J Hill). SY88/MT 0010 East Lulworth (SY8582); 23 Jun; 28 Jun; 04 Oct; 13 Oct; 14 Oct; 2 on 16 Oct (L J Hill). SZ07/0377 Durlston Country Park (SZ0377); 04 Jul; 05 Jul; 15 Sep; 16 Sep; 2 on 23 Oct; 3 on 28 Sep; 02 Oct (S Breeze). SZ07/MT 0002 Swanage (SZ0278); 09 Jun; 20 Jun; 04 Jul; 2 on 22 Sep; 29 Sep; 2 on 18 Oct; 19 Oct; 23 Oct (P England). SZ09/MT 0006 Poole (SZ0291); 19 Jun; 08 Oct (V Giavarini). SZ09/MT 0009 Poole (SZ0097); 20 Oct (J Fradgley).
- 73.304 *Leucania loreyi* (Duponchel, 1827) **COSMOPOLITAN** Migrant
Recorded in: SY66; SY97. SY66/MT 0001 Portland (SY6868); 25 Aug (M Cade). SY97/9178 Kimmeridge (SY9178); 18 Aug (R Arnfield).

- 73.314 *Euxoa nigricans* (Linnaeus, 1761) **GARDEN DART**
Recorded in: ST80; SY67; SY68; SY88; SZ09. Merley, Sopwith Crescent (SZ0298); 2 on 24 Jun (R W Steedman). ST80/8304 Winterborne Stickland (ST8304); 15 Jul (W W Bown). SY67/6870 Isle of Portland (SY6870); 23 Jul; 05 Aug; 08 Aug (D Saunders). SY67/MT 0001 Weymouth (SY6679); 13 Aug (P H Sterling). SY67/MT 0006 Weymouth (SY6778); 08 Aug; 09 Aug (J Oughton). SY68/MT 0001 Dorchester (SY6889); 08 Aug, leg. J E Down (J E Down, M Down). SY88/MT 0010 East Lulworth (SY8582); 11 Aug (L J Hill).
- 73.316 *Agrotis cinerea* ([Denis & Schiffermüller], 1775) **LIGHT FEATHERED RUSTIC** Nb
Recorded in: SY79; SZ07. SY79/MT 0001 Puddletown (SY7695); 27 Apr (H G Wood Homer). SZ07/0377 Durlston Country Park (SZ0377); 18 on 27 May; 5 on 30 May (S Breeze). SZ07/MT 0002 Swanage (SZ0278); 02 Jun (P England).
- 73.322 *Agrotis vestigialis* (Hufnagel, 1766) **ARCHER'S DART** Local
Recorded in: SY98; SZ08; SZ19. Norden (SY9483); 18 Aug (J White). Norden, Louern (SY9483); 18 Aug (J White). Studland, South Haven Point (SZ0386); 01 Sep (J Seawright). SY98/9485 Hartland Moor (SY9485); 2 on 22 Aug (R Arnfield). SY98/9685 Hartland Moor (SY9685); 2 on 14 Aug; 5 on 17 Aug; 2 on 23 Aug (R Arnfield). SZ08/0386 Poole Harbour, Bramble Bush Bay (SZ0386); 29 Jul; 2 on 03 Sep (J Seawright).
- 73.324 *Agrotis trux* (Hübner, [1824]) **CRESCENT DART** Local
Recorded in: SY39; SY49; SY67; SY97; SZ07. SY39/MT 0001 Charmouth (SY3693); 17 Jul; 20 Jul; 28 Jul; 02 Aug (G Sell). SY49/4291 Seatown (SY4291); 16 Jul; 18 Jul (G Carr). SY49/MT 0002 Bothenhampton (SY4892); 17 Aug (M S Parsons). SY67/6870 Isle of Portland (SY6870); 05 Jul; 09 Jul; 10 Jul; 2 on 14 Jul; 16 Jul; 19 Jul; 20 Jul; 21 Jul; 22 Jul; 2 on 23 Jul; 3 on 24 Jul; 25 Jul; 2 on 26 Jul; 03 Aug; 05 Aug; 25 Aug (D Saunders). SY67/MT 0005 Portland (SY6871); 09 Jul (J Williamson). SY97/9178 Kimmeridge (SY9178); 11 Aug; 2 on 13 Aug; 15 Aug; 17 Aug; 18 Aug; 19 Aug (R Arnfield). SZ07/0377 Durlston Country Park (SZ0377); 05 Jul; 2 on 28 Jul; 01 Aug (S Breeze). SZ07/MT 0002 Swanage (SZ0278); 22 Jul (P England).
- 73.330 *Ochropleura leucogaster* (Freyer, [1831]) **RADFORD'S FLAME SHOULDER** Vagrant/Accidental
Recorded in: SY66. SY66/MT 0001 Portland (SY6868); 02 Dec (M Cade).
- 73.341 *Standfussiana lucerneae* (Linnaeus, 1758) **NORTHERN RUSTIC** Local
Recorded in: SY67. SY67/6870 Isle of Portland (SY6870); 26 Jul; 28 Jul (D Saunders).
- 73.347 *Noctua janthina* [Denis & Schiffermüller], 1775 **LANGMAID'S YELLOW UNDERWING** Migrant
Recorded in: SY66. SY66/MT 0001 Portland (SY6868); 09 Jul (M Cade).
- 74.011 *Earias clorana* (Linnaeus, 1761) **CREAM-BORDERED GREEN PEA** Nb
Recorded in: SU00; SY39; SY66; SY79; SY88; SY97; SY99. Lytchett Bay, Lytchett Way (SY9792); 27 Jun (N J Hull). SU00/0102 Grange (SU0102); 03 Aug (R Payne). SY39/3492 Lyme Regis, Charmouth Road car park (SY3492); 22 Aug (P Major). SY39/MT 0001 Charmouth (SY3693); 30 Jun; 04 Jul; 11 Jul; 12 Jul; 21 Jul (G Sell). SY66/MT 0001 Portland (SY6868); 09 Jun; 24 Jun; 08 Jul; 24 Jul; 25 Jul (M Cade). SY79/7293 Yellowham Farm (SY7293); 26 Jun; 28 Jun (G Balcikonis). SY79/MT 0001 Puddletown (SY7695); 2 on 27 Jun; 09 Jul; 13 Jul; 26 Jul (H G Wood Homer). SY88/MT 0001 East Lulworth (SY8583); 27 Jun (L J Hill). SY97/9178 Kimmeridge (SY9178); 11 Aug (R Arnfield).

Recorders

Records were gratefully received from the following 235 recorders: A Adamcik; A Ashworth; A Bryant; A Burden; A Gibbs; A H Bicker; A Hodgson; A J Sherring; A Jenkins; A Jukes; A King; A Kirby; A May; A O J Evans; A Reese; A Rose; A Rosenthal; A Stewart; B Baxter; B Coleman; B D D Young; B Moore; B P Pickess; B Young; Bournemouth Naturally Survey Group; C Barrow; C Bulman; C Emblem-English; C F Blyth; C Findell; C Fletcher; C Greenland; C Hart-Davies; C Kelly; C Kendall; C L Amond; C Moody; C Nunn; C Philipps; C Pinder; C R Burningham; C Roughley; C Ryall; C Steele; C W Plant; C White; D Bird; D Boyce; D Carter; D Couzens; D Darch; D Davies; D Emblem; D Emery; D Foot; D Gould; D Gower; D Hall; D J Evans; D Jackson; D Leadbetter; D Levy; D Miller; D Raper; D Roy; D S Leader; D Saunders; D Wainwright; D Whalley; D White; DWT Staff; E Clark; E Levy; E Lonsdale; E S Rose; E Weld; F Johns; F Peach; F Spracklen; F Thompson; G A Laing; G A Nash; G Balcikonis; G Carr; G Hamer; G Lamb; G Linton; G MacPherson; G R Hopkins; G Sell; H C R Wheatcroft; H Cooper; H Dixon; H G Wood Homer; H Gillen; H Goldsmith; H Loxton; Hengistbury Head Staff; I Laing; J A Newbould; J Adams; J Baker; J Burge; J C Winterbottom; J Campbell; J

Chainey; J D McMillan; J Daw; J E Down; J Fradgley; J Francis; J Gilbert; J M Elliott; J Mannerings; J Oughton; J Read; J S Muse; J Seawright; J Smith; J Spence; J Trevett; J V F Hammick; J van Breda; J Vetterlein; J W Wescombe; J White; J Williams; J Williamson; J Wright; K Alexander; K Bedford; K Cruickshanks; K Howland; K Sterling; K Taylor; L de Whalley; L J Hill; L Lambert; L Munns; L Phillips; L Pullen; L Smith; M Bailey; M Basford; M C Townsend; M Cade; M Davies; M Down; M E Hammond; M Findell; M Fontein; M Fussell; M H R d'Apice; M Hetherington; M Imrie; M Jeffes; M Jones; M Plaxton; M Raper; M S Parsons; M S Warren; M Shereston; M Taylor; M Tuck; M Whitfield; Miss Watts; N Brooks; N Hesketh-Roberts; N J Hull; N Parsons; N Smithson; N Spring; N Tomlinson; N Tuck; P Bruce-Jones; P Clarke; P Clayton; P Darch; P England; P H Sterling; P Hunt; P Major; P Orchard; P Rendell; P Seagrave; P Shouler; P Shreeves; P Wetherell; R A B George; R Arnfield; R Brunt; R Carpenter; R Comont; R Eddy; R Ellis; R Fellows; R Ford; R Harley; R Hilton; R Hodgkinson; R Jones; R Lambert; R Payne; R Pope; R R Cook; R Stevens; R Tilling; R W Adams; R W Steedman; R Walls; S Breeze; S Buckle; S Davis; S Ellis; S Faulkner; S Heringman; S Irvine; S J Breeze; S J Fry; S Luker; S Pearson; S Philp; S Whitehouse; S Woodley; T Brereton; T Freeborn; T Morris; T Perrett; T Remnant; T Woodley; V Giavarini; W Haddrell; W W Bown; Y Barnicoat & Z Randle.

My apologies if anyone has been omitted from this list.

References

Agassiz, D.J.L., Beavan, S.D. & Heckford, R.J. 2013. *A checklist of the Lepidoptera of the British Isles*. Field Studies Council.