

DORSET MACRO-MOTHS 2013

COUNTY MACRO-MOTH RECORDER'S REPORT

LESLIE J. EVANS-HILL FRES

Butterfly Conservation, Manor Yard, East Lulworth, Dorset BH20 5QP

E-mail: levans-hill@butterfly-conservation.org

Abstract

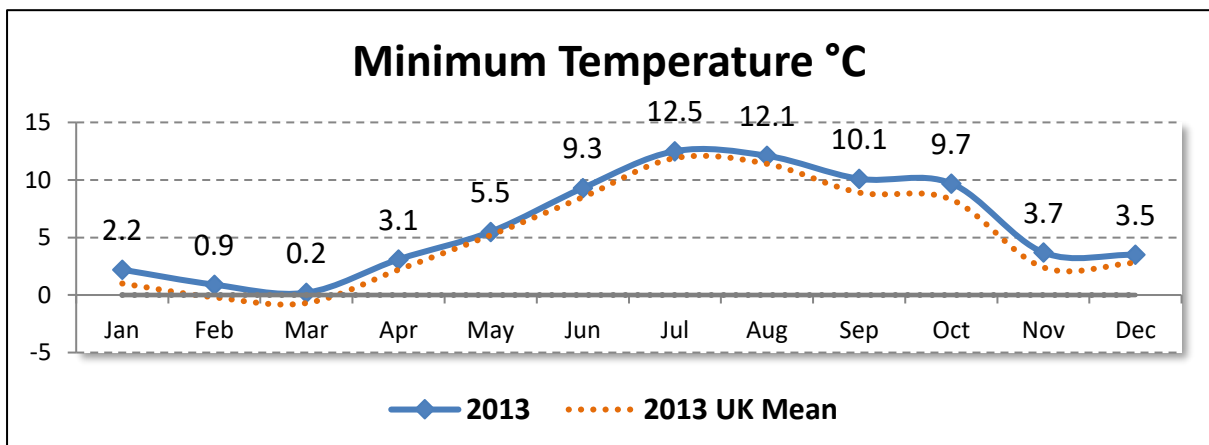
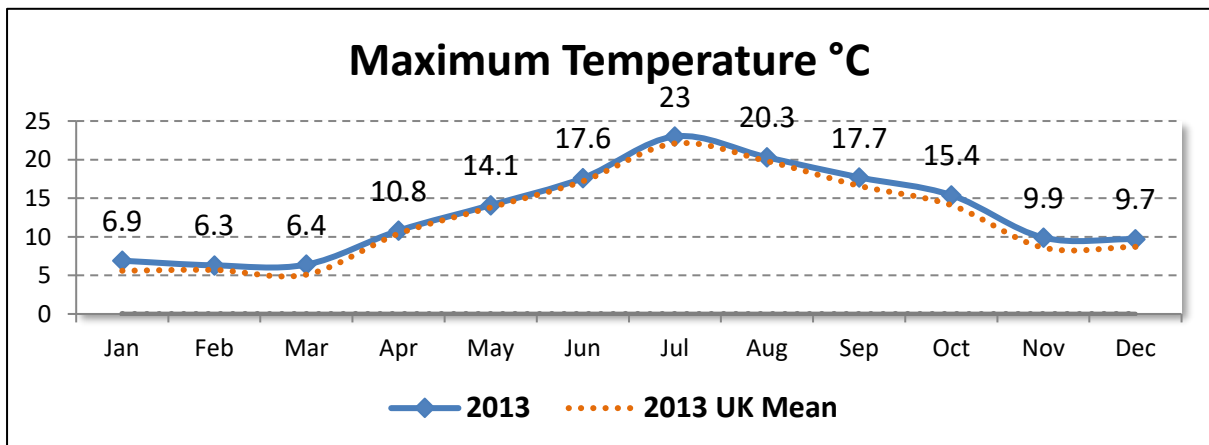
Presented here are data pertaining to submitted records of local macro-moth records of interest during the year 2013 in Dorset administrative and vice-county (9). Errors & omissions expected.

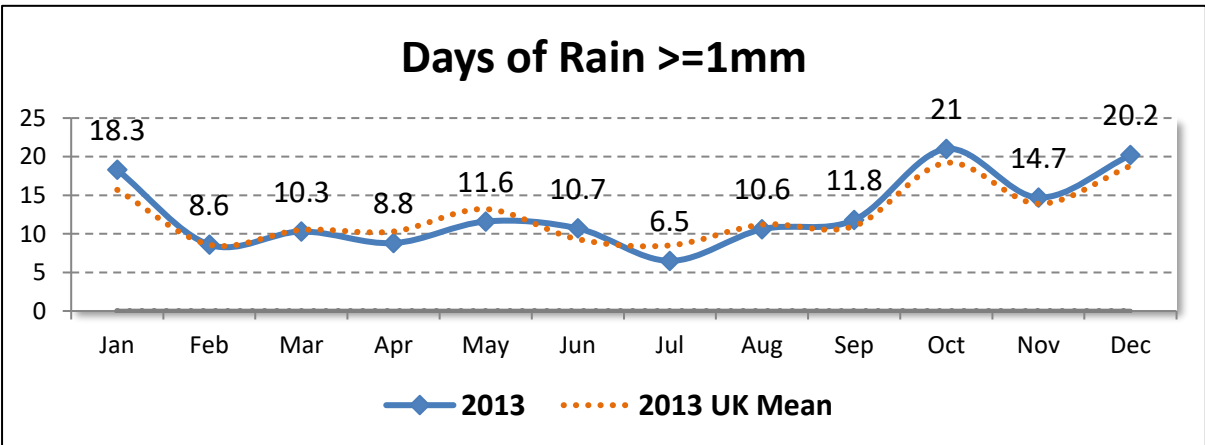
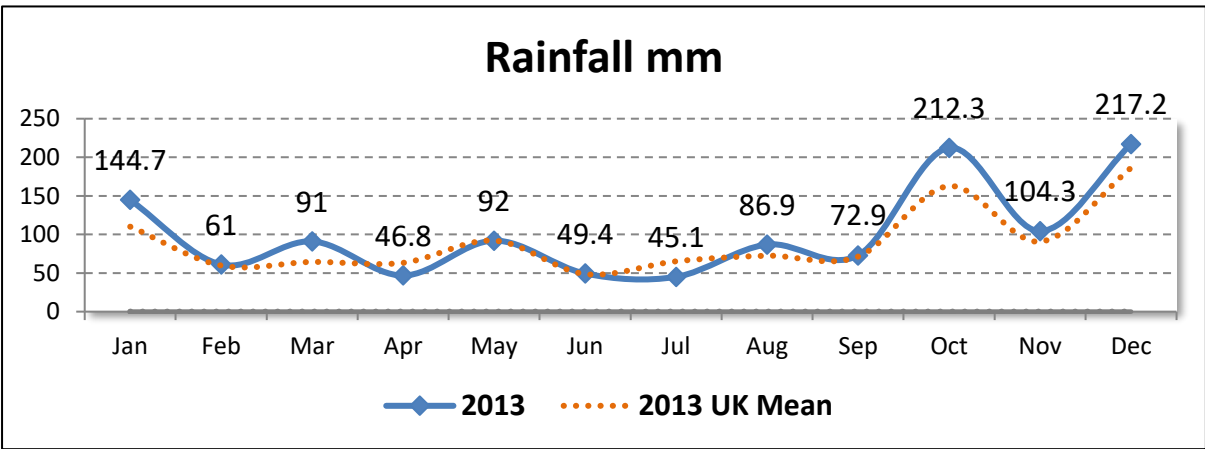
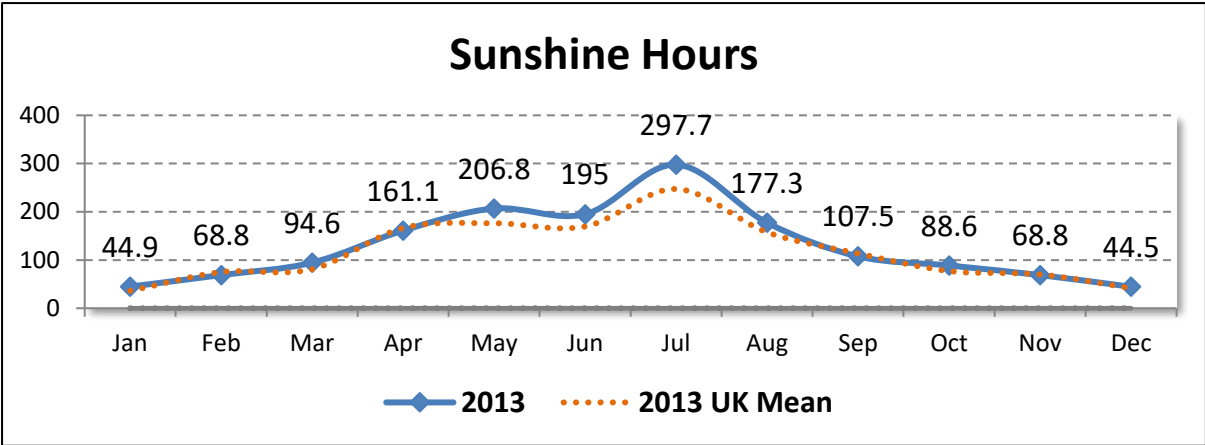
Records and Species per Year

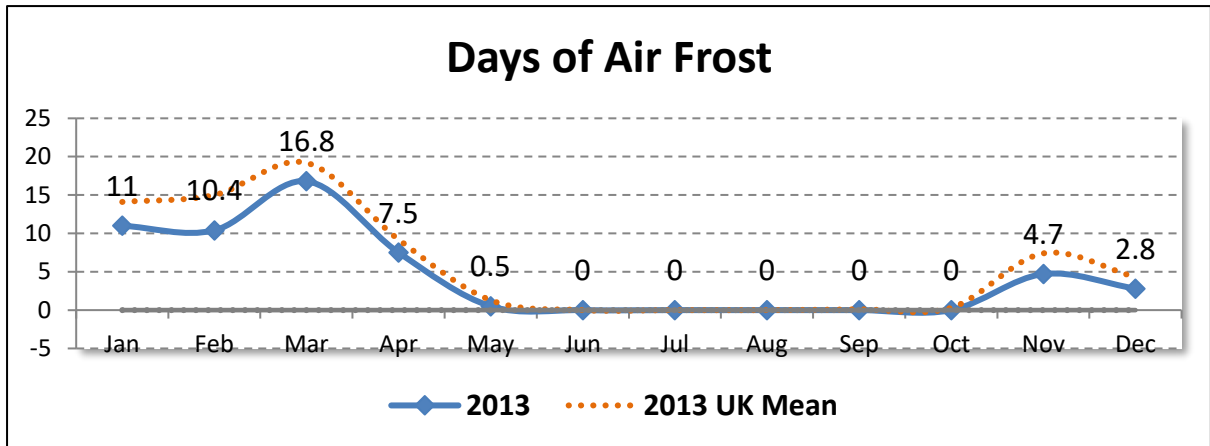
<i>Year</i>	<i>Records</i>	<i>Species</i>
2013	61,580	538

Weather

All data are © Crown Copyright. UK Met Office.







New to Dorset

One species is confirmed new to Dorset during 2013:

- *Chiasmia aestimaria* (Hübner, [1809]) **TAMARISK PEACOCK** from Portland (SY6868); 1 Adult on 26 Aug 2013 by M Cade.

Species per 10km

All life stages – Unverified records and records where there is doubt are excluded.

<i>10km</i>	<i>Species</i>	<i>10km</i>	<i>Species</i>	<i>10km</i>	<i>Species</i>
ST20	0	ST91	97	SY77	0
ST30	106	SU00	185	SY78	291
ST40	217	SU01	27	SY79	393
ST50	1	SU02	1	SY87	6
ST51	12	SU10	0	SY88	355
ST60	259	SU11	234	SY89	292
ST61	202	SY39	284	SY97	4
ST70	160	SY48	5	SY98	222
ST71	92	SY49	291	SY99	278
ST72	144	SY58	198	SZ07	287
ST73	48	SY59	90	SZ08	166
ST80	294	SY66	132	SZ09	278
ST81	15	SY67	307		
ST82	22	SY68	328		
ST90	158	SY69	70		

2013 Summary

All figures are for adults. Records with vague dates are excluded; however, unverified records are included. For species that overwinter as adults or emerge the year prior, the earliest and latest dates are unavailable.

<i>Code</i>	<i>Taxon</i>	<i>Vernacular</i>	<i>Records</i>	<i>Individuals</i>	<i>Earliest</i>	<i>Latest</i>
	<i>Scotopteryx mucronata/luridata</i>	LEAD/JULY BELLE	1	1	27 Jun	27 Jun
	<i>Acronicta tridens/psi</i>	DARK DAGGER/GREY DAGGER	115	132	30 May	12 Sep
	<i>Amphipoea oculea</i> agg.	EAR MOTH AGG.	24	36	22 Jul	23 Aug
	<i>Amphipyra pyramidea</i> agg.	COPPER UNDERWING AGG.	75	86	25 Jul	20 Oct
	<i>Epirrita dilutata</i> agg.	NOVEMBER MOTH AGG.	69	175	08 Oct	09 Dec
	<i>Euxoa tritici/obelisca</i>	WHITE-LINE DART/SQUARE-SPOT DART	2	14	18 Jul	08 Aug
	<i>Hoplodrina octogenaria/blanda</i>	UNCERTAIN/RUSTIC AGG.	409	1739	18 May	18 Sep
	<i>Mesapamea secalis</i> agg.	COMMON RUSTIC AGG.	221	1978	28 Jun	03 Oct
	<i>Oligia strigilis</i> agg.	MARBLED MINOR AGG.	235	934	04 Jun	25 Aug
3.001	<i>Triodia sylvina</i>	ORANGE SWIFT	106	148	03 Aug	22 Sep
3.002	<i>Korscheltellus lupulina</i>	COMMON SWIFT	154	331	18 May	11 Jul
3.004	<i>Phymatopus hecta</i>	GOLD SWIFT	2	2	15 Jul	16 Jul
3.005	<i>Hepialus humuli</i>	GHOST MOTH	63	69	17 Jun	21 Aug
50.001	<i>Cossus cossus</i>	GOAT MOTH	2	2	30 Jun	16 Jul
50.002	<i>Zeuzera pyrina</i>	LEOPARD MOTH	18	27	06 Jul	04 Aug
53.001	<i>Apoda limacodes</i>	FESTOON	32	48	26 Jun	30 Jul
54.002	<i>Adscita statices</i>	FORESTER	12	16	21 Jun	08 Jul
54.003	<i>Adscita geryon</i>	CISTUS FORESTER	3	6	29 Jun	05 Jul
54.008	<i>Zygaena filipendulae</i>	SIX-SPOT BURNET	115	1232	06 Jun	28 Aug
54.009	<i>Zygaena lonicerae</i>	NARROW-BORDERED FIVE-SPOT BURNET	3	21	18 Jun	30 Jun
54.010	<i>Zygaena trifolii</i>	FIVE-SPOT BURNET	12	115	23 Jun	26 Jul
65.001	<i>Falcaria lacertinaria</i>	SCALLOPED HOOK-TIP	58	73	01 Jun	04 Sep
65.002	<i>Watsonalla binaria</i>	OAK HOOK-TIP	81	103	06 Jun	07 Oct
65.003	<i>Watsonalla cultraria</i>	BARRED HOOK-TIP	12	18	16 May	21 Aug
65.005	<i>Drepana falcataria</i>	PEBBLE HOOK-TIP	167	239	03 May	03 Sep

<i>Code</i>	<i>Taxon</i>	<i>Vernacular</i>	<i>Records</i>	<i>Individuals</i>	<i>Earliest</i>	<i>Latest</i>
65.007	<i>Cilix glaucata</i>	CHINESE CHARACTER	258	380	18 May	25 Sep
65.008	<i>Thyatira batis</i>	PEACH BLOSSOM	106	135	12 Jun	01 Sep
65.009	<i>Habrosyne pyritoides</i>	BUFF ARCHES	328	1087	05 Jun	22 Aug
65.010	<i>Tethea ocularis</i>	FIGURE OF EIGHTY	51	79	05 Jun	17 Jul
65.011	<i>Tethea or</i>	POPLAR LUTESTRING	1	1	08 Jul	08 Jul
65.013	<i>Ochropacha duplaris</i>	COMMON LUTESTRING	52	172	28 Jun	03 Aug
65.015	<i>Polyploca ridens</i>	FROSTED GREEN	9	9	24 Apr	08 May
65.016	<i>Achlya flavicornis</i>	YELLOW HORNED	7	9	20 Mar	18 Apr
66.001	<i>Poecilocampa populi</i>	DECEMBER MOTH	96	704	Unavailable	Unavailable
66.002	<i>Trichiura crataegi</i>	PALE EGGAR	38	73	14 Aug	27 Sep
66.003	<i>Malacosoma neustria</i>	LACKEY	162	490	14 Jun	28 Aug
66.005	<i>Eriogaster lanestris</i>	SMALL EGGAR	5	5	16 Apr	24 Apr
66.007	<i>Lasiocampa quercus</i>	OAK EGGAR	62	78	20 Jun	28 Aug
66.008	<i>Macrothylacia rubi</i>	FOX MOTH	30	35	27 May	15 Jul
66.010	<i>Euthrix potatoria</i>	DRINKER	191	359	16 Jun	02 Sep
66.012	<i>Gastropacha quercifolia</i>	LAPPET	7	11	14 Jul	09 Aug
68.001	<i>Saturnia pavonia</i>	EMPEROR MOTH	3	3	07 May	19 May
69.001	<i>Mimas tiliae</i>	LIME HAWK-MOTH	37	40	16 Jun	15 Jul
69.002	<i>Smerinthus ocellata</i>	EYED HAWK-MOTH	90	108	18 May	22 Jul
69.003	<i>Laothoe populi</i>	POPLAR HAWK-MOTH	410	589	13 May	12 Sep
69.004	<i>Agrius convolvuli</i>	CONVOLVULUS HAWK-MOTH	29	49	26 Aug	09 Oct
69.005	<i>Acherontia atropos</i>	DEATH'S-HEAD HAWK-MOTH	1	1	28 Sep	28 Sep
69.006	<i>Sphinx ligustri</i>	PRIVET HAWK-MOTH	187	309	01 Jun	06 Aug
69.007	<i>Sphinx pinastri</i>	PINE HAWK-MOTH	46	55	19 Jun	14 Aug
69.008	<i>Hemaris tityus</i>	NARROW-BORDERED BEE HAWK-MOTH	1	1	18 May	18 May
69.010	<i>Macroglossum stellatarum</i>	HUMMING-BIRD HAWK-MOTH	61	64	20 Apr	15 Nov
69.014	<i>Hyles gallii</i>	BEDSTRAW HAWK-MOTH	5	5	03 Jul	22 Sep
69.016	<i>Deilephila elpenor</i>	ELEPHANT HAWK-MOTH	435	1081	02 Jun	27 Sep

<i>Code</i>	<i>Taxon</i>	<i>Vernacular</i>	<i>Records</i>	<i>Individuals</i>	<i>Earliest</i>	<i>Latest</i>
69.017	<i>Deilephila porcellus</i>	SMALL ELEPHANT HAWK-MOTH	173	379	08 Jun	02 Aug
70.002	<i>Idaea muricata</i>	PURPLE-BORDERED GOLD	11	13	07 Jul	19 Jul
70.004	<i>Idaea rusticata</i>	LEAST CARPET	18	21	22 Jul	24 Aug
70.006	<i>Idaea fuscovenosa</i>	DWARF CREAM WAVE	52	72	26 Jun	21 Aug
70.008	<i>Idaea seriata</i>	SMALL DUSTY WAVE	55	63	16 Jun	24 Sep
70.009	<i>Idaea subsericeata</i>	SATIN WAVE	20	29	07 Jun	04 Sep
70.010	<i>Idaea sylvestriaria</i>	DOTTED BORDER WAVE	2	2	15 Jul	16 Jul
70.011	<i>Idaea dimidiata</i>	SINGLE-DOTTED WAVE	320	483	06 Jun	30 Sep
70.012	<i>Idaea trigeminata</i>	TREBLE BROWN SPOT	59	82	13 Jun	01 Aug
70.013	<i>Idaea biselata</i>	SMALL FAN-FOOTED WAVE	360	956	06 Jul	10 Sep
70.016	<i>Idaea aversata</i>	RIBAND WAVE	634	2895	07 Jun	03 Oct
70.017	<i>Idaea degeneraria</i>	PORTLAND RIBBON WAVE	3	3	09 Sep	05 Oct
70.018	<i>Idaea straminata</i>	PLAIN WAVE	17	25	28 Jun	17 Aug
70.023	<i>Scopula marginepunctata</i>	MULLEIN WAVE	58	69	16 Jun	29 Sep
70.024	<i>Scopula imitaria</i>	SMALL BLOOD-VEIN	101	114	18 Jun	26 Sep
70.025	<i>Scopula immutata</i>	LESSER CREAM WAVE	7	11	26 Jun	10 Aug
70.027	<i>Scopula floslactata</i>	CREAM WAVE	17	18	09 Jun	05 Jul
70.028	<i>Scopula emutaria</i>	ROSY WAVE	2	2	28 Aug	28 Aug
70.029	<i>Timandra comae</i>	BLOOD-VEIN	392	669	10 Jun	30 Oct
70.030	<i>Cyclophora pendularia</i>	DINGY MOCHA	8	8	31 Jul	08 Aug
70.031	<i>Cyclophora annularia</i>	MOCHA	27	40	01 Jun	28 Aug
70.032	<i>Cyclophora albipunctata</i>	BIRCH MOCHA	17	19	18 May	28 Aug
70.033	<i>Cyclophora pupillaria</i>	BLAIR'S MOCHA	10	12	01 Oct	18 Oct
70.034	<i>Cyclophora ruficiliaria</i>	JERSEY MOCHA	3	3	06 Aug	07 Sep
70.036	<i>Cyclophora punctaria</i>	MAIDEN'S BLUSH	128	198	29 May	26 Sep
70.037	<i>Cyclophora linearia</i>	CLAY TRIPLE-LINES	59	86	04 Jun	22 Sep
70.038	<i>Rhodometra sacraria</i>	VESTAL	177	468	19 Jun	31 Oct
70.041	<i>Scotopteryx luridata</i>	JULY BELLE	6	6	28 Jun	14 Aug

<i>Code</i>	<i>Taxon</i>	<i>Vernacular</i>	<i>Records</i>	<i>Individuals</i>	<i>Earliest</i>	<i>Latest</i>
70.043	<i>Scotopteryx bipunctaria</i>	CHALK CARPET	23	33	17 Jul	05 Sep
70.045	<i>Scotopteryx chenopodiata</i>	SHADED BROAD-BAR	58	146	26 May	02 Oct
70.046	<i>Orthonama vittata</i>	OBLIQUE CARPET	7	8	16 Jun	03 Oct
70.047	<i>Nycterosea obstipata</i>	GEM	43	52	19 Jun	28 Nov
70.049	<i>Xanthorhoe fluctuata</i>	GARDEN CARPET	458	699	06 May	21 Oct
70.051	<i>Xanthorhoe spadicearia</i>	RED TWIN-SPOT CARPET	394	680	01 May	22 Sep
70.052	<i>Xanthorhoe ferrugata</i>	DARK-BARRED TWIN-SPOT CARPET	3	5	19 Jun	20 Aug
70.053	<i>Xanthorhoe designata</i>	FLAME CARPET	81	105	30 May	12 Sep
70.054	<i>Xanthorhoe montanata</i>	SILVER-GROUND CARPET	136	211	26 May	31 Jul
70.057	<i>Catarhoe rubidata</i>	RUDDY CARPET	2	2	13 Jul	15 Jul
70.059	<i>Camptogramma bilineata</i>	YELLOW SHELL	69	73	03 Jun	21 Sep
70.061	<i>Epirrhoe alternata</i>	COMMON CARPET	324	504	16 May	03 Oct
70.062	<i>Epirrhoe rivata</i>	WOOD CARPET	11	13	29 Jun	24 Jul
70.063	<i>Epirrhoe galiata</i>	GALIUM CARPET	18	22	06 Jul	26 Sep
70.064	<i>Euphyia biangulata</i>	CLOAKED CARPET	6	6	20 Jun	10 Aug
70.065	<i>Euphyia unangulata</i>	SHARP-ANGLED CARPET	21	23	29 Jun	28 Aug
70.066	<i>Earophila badiata</i>	SHOULDER STRIPE	13	13	17 Apr	18 May
70.067	<i>Anticlea derivata</i>	STREAMER	10	11	28 Apr	25 May
70.068	<i>Mesoleuca albicillata</i>	BEAUTIFUL CARPET	8	10	08 Jul	21 Aug
70.069	<i>Pelurga comitata</i>	DARK SPINACH	3	3	19 Jul	09 Aug
70.070	<i>Larentia clavaria</i>	MALLOW	18	23	24 Sep	24 Oct
70.074	<i>Hydriomena furcata</i>	JULY HIGHFLYER	192	441	05 Jul	04 Sep
70.075	<i>Hydriomena impluviata</i>	MAY HIGHFLYER	15	22	03 May	29 Jun
70.077	<i>Pennithera firmata</i>	PINE CARPET	169	255	18 Jun	30 Oct
70.079	<i>Thera britannica</i>	SPRUCE CARPET	240	591	02 Jan	12 Dec
70.081	<i>Thera obeliscata</i>	GREY PINE CARPET	253	728	03 May	27 Nov
70.083	<i>Thera cupressata</i>	CYPRESS CARPET	102	143	25 Jun	27 Nov
70.084	<i>Plemyria rubiginata</i>	BLUE-BORDERED CARPET	64	93	19 Jun	16 Aug

<i>Code</i>	<i>Taxon</i>	<i>Vernacular</i>	<i>Records</i>	<i>Individuals</i>	<i>Earliest</i>	<i>Latest</i>
70.085	<i>Cidaria fulvata</i>	BARRED YELLOW	63	91	25 Jun	30 Jul
70.086	<i>Electrophaes corylata</i>	BROKEN-BARRED CARPET	54	82	31 May	17 Jul
70.087	<i>Cosmorhoe ocellata</i>	PURPLE BAR	88	129	01 Jun	24 Sep
70.089	<i>Eulithis prunata</i>	PHOENIX	85	112	18 Jun	30 Aug
70.090	<i>Eulithis testata</i>	CHEVRON	6	6	13 Jul	24 Sep
70.092	<i>Eulithis mellinata</i>	SPINACH	2	2	07 Jul	26 Jul
70.093	<i>Gandaritis pyraliata</i>	BARRED STRAW	168	298	30 Jun	10 Aug
70.094	<i>Ecliptopera silaceata</i>	SMALL PHOENIX	183	313	19 May	12 Sep
70.095	<i>Chloroclysta siterata</i>	RED-GREEN CARPET	202	491	Unavailable	Unavailable
70.097	<i>Dysstroma truncata</i>	COMMON MARBLED CARPET	1013	4065	03 May	09 Dec
70.099	<i>Colostygia olivata</i>	BEECH-GREEN CARPET	1	1	06 Sep	06 Sep
70.100	<i>Colostygia pectinataria</i>	GREEN CARPET	299	577	07 May	13 Oct
70.101	<i>Colostygia multistrigaria</i>	MOTTLED GREY	4	4	04 Jan	19 Apr
70.103	<i>Lampropteryx suffumata</i>	WATER CARPET	13	19	16 Apr	06 Jun
70.106	<i>Operophtera brumata</i>	WINTER MOTH	33	64	Unavailable	Unavailable
70.107	<i>Epirrita dilutata</i>	NOVEMBER MOTH	2	2	18 Oct	20 Oct
70.111	<i>Asthena albulata</i>	SMALL WHITE WAVE	10	12	01 Jun	22 Aug
70.112	<i>Euchoeca nebulata</i>	DINGY SHELL	9	10	17 Jun	23 Jul
70.114	<i>Hydrelia flammeolaria</i>	SMALL YELLOW WAVE	76	99	19 Jun	10 Aug
70.117	<i>Minoa murinata</i>	DRAB LOOPER	9	11	04 Jun	18 Jun
70.118	<i>Philereme vetulata</i>	BROWN SCALLOP	4	5	14 Jul	24 Jul
70.119	<i>Philereme transversata</i>	DARK UMBER	2	3	19 Jul	10 Aug
70.121	<i>Rheumaptera undulata</i>	SCALLOP SHELL	27	30	26 Jun	30 Jul
70.126	<i>Horisme vitalbata</i>	SMALL WAVED UMBER	88	194	27 May	03 Sep
70.127	<i>Horisme tersata</i>	FERN	27	37	17 Jun	10 Aug
70.128	<i>Melanthia procellata</i>	PRETTY CHALK CARPET	53	86	06 Jun	04 Oct
70.130	<i>Odezia atrata</i>	CHIMNEY SWEEPER	3	3	15 Jun	03 Jul
70.132	<i>Perizoma affinitata</i>	RIVULET	40	50	29 May	26 Aug

<i>Code</i>	<i>Taxon</i>	<i>Vernacular</i>	<i>Records</i>	<i>Individuals</i>	<i>Earliest</i>	<i>Latest</i>
70.133	<i>Perizoma alchemillata</i>	SMALL RIVULET	136	208	07 Jun	31 Aug
70.134	<i>Perizoma bifaciata</i>	BARRED RIVULET	16	29	18 Jul	29 Aug
70.137	<i>Perizoma albulata</i>	GRASS RIVULET	6	8	11 Jun	04 Jul
70.138	<i>Perizoma flavofasciata</i>	SANDY CARPET	74	90	06 Jun	14 Aug
70.141	<i>Gymnoscelis rufifasciata</i>	DOUBLE-STRIPED PUG	460	895	03 Jan	16 Nov
70.142	<i>Chloroclystis v-ata</i>	V-PUG	206	313	04 May	23 Sep
70.143	<i>Pasiphila chloerata</i>	SLOE PUG	2	2	28 Jun	29 Jun
70.144	<i>Pasiphila rectangulata</i>	GREEN PUG	160	236	19 Jun	29 Aug
70.146	<i>Eupithecia haworthiata</i>	HAWORTH'S PUG	78	100	19 Jun	11 Aug
70.147	<i>Eupithecia tenuiata</i>	SLENDER PUG	14	15	17 Jun	09 Aug
70.148	<i>Eupithecia inturbata</i>	MAPLE PUG	16	22	09 Jul	21 Aug
70.149	<i>Eupithecia abietaria</i>	CLOAKED PUG	1	1	20 Jun	20 Jun
70.150	<i>Eupithecia linariata</i>	TOADFLAX PUG	2	2	19 Jul	20 Aug
70.151	<i>Eupithecia pulchellata</i>	FOXGLOVE PUG	60	74	30 May	04 Aug
70.155	<i>Eupithecia venosata</i>	NETTED PUG	2	2	19 Jun	28 Jun
70.156	<i>Eupithecia abbreviata</i>	BRINDLED PUG	65	97	12 Apr	25 Jun
70.157	<i>Eupithecia dodoneata</i>	OAK-TREE PUG	32	53	03 May	28 Jun
70.159	<i>Eupithecia phoeniceata</i>	CYPRESS PUG	54	88	01 Aug	08 Oct
70.160	<i>Eupithecia tripunctaria</i>	WHITE-SPOTTED PUG	42	52	04 Jun	03 Sep
70.162	<i>Eupithecia tantillaria</i>	DWARF PUG	4	4	27 May	17 Jun
70.163	<i>Eupithecia lariciata</i>	LARCH PUG	8	9	15 Jun	10 Aug
70.166	<i>Eupithecia simplicata</i>	PLAIN PUG	5	5	14 Jul	02 Aug
70.168	<i>Eupithecia nanata</i>	NARROW-WINGED PUG	121	200	03 May	08 Sep
70.169	<i>Eupithecia innotata</i>	ANGLE-BARRED PUG	3	4	05 Jul	31 Aug
70.171	<i>Eupithecia indigata</i>	OCHREOUS PUG	4	4	27 May	21 Jun
70.172	<i>Eupithecia distinctaria</i>	THYME PUG	1	1	19 Jun	19 Jun
70.173	<i>Eupithecia centaureata</i>	LIME-SPECK PUG	147	199	31 May	30 Sep
70.176	<i>Eupithecia intricata</i>	FREYER'S PUG	34	49	31 May	13 Jul

<i>Code</i>	<i>Taxon</i>	<i>Vernacular</i>	<i>Records</i>	<i>Individuals</i>	<i>Earliest</i>	<i>Latest</i>
70.179	<i>Eupithecia absinthiata</i>	WORMWOOD PUG	95	112	31 May	25 Sep
70.181	<i>Eupithecia valerianata</i>	VALERIAN PUG	2	4	16 Jun	19 Jun
70.182	<i>Eupithecia assimilata</i>	CURRENT PUG	72	87	20 May	12 Sep
70.183	<i>Eupithecia vulgata</i>	COMMON PUG	185	299	18 May	03 Oct
70.184	<i>Eupithecia exigua</i>	MOTTLED PUG	52	68	18 May	16 Jul
70.187	<i>Eupithecia icterata</i>	TAWNY SPECKLED PUG	32	35	13 Jul	12 Sep
70.188	<i>Eupithecia succenturiata</i>	BORDERED PUG	9	9	17 Jul	08 Aug
70.189	<i>Eupithecia subumbrata</i>	SHADED PUG	13	15	17 Jun	17 Jul
70.190	<i>Eupithecia subfuscata</i>	GREY PUG	60	81	04 Jun	22 Jul
70.192	<i>Aplocera plagiata</i>	TREBLE-BAR	32	45	06 Jun	23 Sep
70.193	<i>Aplocera efformata</i>	LESSER TREBLE-BAR	2	2	18 Jun	11 Sep
70.195	<i>Chesias legatella</i>	STREAK	2	2	11 Nov	12 Nov
70.198	<i>Lobophora halterata</i>	SERAPHIM	7	17	20 May	24 Jun
70.199	<i>Pterapherapteryx sexalata</i>	SMALL SERAPHIM	55	78	06 Jun	23 Aug
70.200	<i>Acasis viretata</i>	YELLOW-BARRED BRINDLE	210	336	12 May	08 Oct
70.202	<i>Trichopteryx carpinata</i>	EARLY TOOTH-STRIPED	30	44	12 Apr	07 May
70.203	<i>Archiearis parthenias</i>	ORANGE UNDERWING	4	4	19 Apr	01 May
70.205	<i>Abraxas grossulariata</i>	MAGPIE MOTH	330	605	10 Jun	25 Sep
70.206	<i>Abraxas sylvata</i>	CLOUDED MAGPIE	2	2	14 Jul	15 Jul
70.207	<i>Lomaspilis marginata</i>	CLOUDED BORDER	379	819	27 May	21 Aug
70.208	<i>Ligdia adustata</i>	SCORCHED CARPET	106	139	07 May	06 Sep
70.211	<i>Macaria notata</i>	PEACOCK MOTH	2	2	10 Aug	23 Aug
70.212	<i>Macaria alternata</i>	SHARP-ANGLED PEACOCK	205	256	29 May	02 Sep
70.214	<i>Macaria liturata</i>	TAWNY-BARRED ANGLE	103	197	01 Jun	10 Sep
70.218	<i>Chiasmia clathrata</i>	LATTICED HEATH	6	7	19 Jun	01 Sep
70.219	<i>Chiasmia aestimaria</i>	TAMARISK PEACOCK	1	1	26 Aug	26 Aug
70.221	<i>Cepphis advenaria</i>	LITTLE THORN	13	22	09 Jun	09 Jul
70.222	<i>Petrophora chlorosata</i>	BROWN SILVER-LINE	100	302	03 May	01 Aug

<i>Code</i>	<i>Taxon</i>	<i>Vernacular</i>	<i>Records</i>	<i>Individuals</i>	<i>Earliest</i>	<i>Latest</i>
70.223	<i>Plagodis pulveraria</i>	BARRED UMBER	2	2	18 Jun	21 Jul
70.224	<i>Plagodis dolabraria</i>	SCORCHED WING	163	362	30 May	27 Aug
70.225	<i>Pachycnemia hippocastanaria</i>	HORSE CHESTNUT	37	56	06 Mar	27 Nov
70.226	<i>Opisthograptis luteolata</i>	BRIMSTONE MOTH	1198	3903	04 May	24 Oct
70.227	<i>Epione repandaria</i>	BORDERED BEAUTY	64	74	13 Jul	17 Oct
70.229	<i>Pseudopanthera macularia</i>	SPECKLED YELLOW	13	30	26 May	01 Jul
70.231	<i>Apeira syringaria</i>	LILAC BEAUTY	41	55	26 Jun	30 Jul
70.233	<i>Ennomos quercinaria</i>	AUGUST THORN	14	16	20 Jul	23 Sep
70.234	<i>Ennomos alniaria</i>	CANARY-SHOULDERED THORN	214	473	31 Jul	12 Oct
70.235	<i>Ennomos fuscantaria</i>	DUSKY THORN	230	391	21 Jul	18 Oct
70.236	<i>Ennomos erosaria</i>	SEPTEMBER THORN	34	232	19 Jul	29 Sep
70.237	<i>Selenia dentaria</i>	EARLY THORN	500	1068	31 Jan	09 Sep
70.238	<i>Selenia lunularia</i>	LUNAR THORN	2	2	18 Jun	19 Jun
70.239	<i>Selenia tetralunaria</i>	PURPLE THORN	97	134	18 Apr	14 Aug
70.240	<i>Odontopera bidentata</i>	SCALLOPED HAZEL	103	128	03 May	07 Jul
70.241	<i>Crocallis elinguaris</i>	SCALLOPED OAK	303	582	10 Jul	14 Sep
70.243	<i>Ourapteryx sambucaria</i>	SWALLOW-TAILED MOTH	223	477	03 Jul	14 Aug
70.244	<i>Colotois pennaria</i>	FEATHERED THORN	115	337	03 Oct	12 Dec
70.245	<i>Alsophila aescularia</i>	MARCH MOTH	43	67	05 Mar	29 Apr
70.247	<i>Phigalia pilosaria</i>	PALE BRINDLED BEAUTY	20	27	02 Jan	09 Mar
70.248	<i>Lycia hirtaria</i>	BRINDLED BEAUTY	27	38	07 Apr	17 May
70.251	<i>Biston strataria</i>	OAK BEAUTY	72	164	07 Jan	29 Apr
70.252	<i>Biston betularia</i>	PEPPERED MOTH	413	872	29 May	28 Aug
70.253	<i>Agriopis leucophaearia</i>	SPRING USHER	2	2	06 Mar	08 Mar
70.254	<i>Agriopis aurantiaria</i>	SCARCE UMBER	4	4	27 Nov	09 Dec
70.255	<i>Agriopis marginaria</i>	DOTTED BORDER	33	45	10 Jan	01 May
70.256	<i>Erannis defoliaria</i>	MOTTLED UMBER	20	32	07 Jan	16 Dec
70.257	<i>Menophra abruptaria</i>	WAVED UMBER	51	69	04 May	21 Aug

<i>Code</i>	<i>Taxon</i>	<i>Vernacular</i>	<i>Records</i>	<i>Individuals</i>	<i>Earliest</i>	<i>Latest</i>
70.258	<i>Peribatodes rhomboidaria</i>	WILLOW BEAUTY	969	2762	17 May	17 Oct
70.262	<i>Selidosema brunnearia</i>	BORDERED GREY	2	2	14 Aug	04 Sep
70.264	<i>Deileptenia ribeata</i>	SATIN BEAUTY	13	18	18 Jul	17 Aug
70.265	<i>Alcis repandata</i>	MOTTLED BEAUTY	89	179	26 Jun	22 Sep
70.266	<i>Alcis jubata</i>	DOTTED CARPET	1	1	23 Aug	23 Aug
70.268	<i>Hypomecis punctinalis</i>	PALE OAK BEAUTY	4	4	19 Jun	21 Jul
70.270	<i>Ectropis crepuscularia</i>	ENGRAILED	97	142	10 Mar	17 Oct
70.272	<i>Paradarisa consonaria</i>	SQUARE SPOT	5	6	03 May	19 Jun
70.273	<i>Parectropis similaria</i>	BRINDLED WHITE-SPOT	1	1	04 Jul	04 Jul
70.275	<i>Ematurga atomaria</i>	COMMON HEATH	37	47	16 May	24 Jul
70.276	<i>Bupalus piniaria</i>	BORDERED WHITE	13	17	13 Jun	03 Aug
70.277	<i>Cabera pusaria</i>	COMMON WHITE WAVE	210	298	26 May	04 Sep
70.278	<i>Cabera exanthemata</i>	COMMON WAVE	327	543	21 May	12 Sep
70.279	<i>Lomographa bimaculata</i>	WHITE-PINION SPOTTED	14	15	03 May	06 Jul
70.280	<i>Lomographa temerata</i>	CLOUDED SILVER	288	571	30 May	07 Aug
70.282	<i>Theria primaria</i>	EARLY MOTH	5	6	18 Feb	08 Mar
70.283	<i>Campaea margaritaria</i>	LIGHT EMERALD	489	1086	07 Jun	17 Oct
70.284	<i>Hylaea fasciaria</i>	BARRED RED	58	122	16 Jun	10 Aug
70.287	<i>Charissa obscurata</i>	ANNULET	5	7	12 Jul	24 Aug
70.288	<i>Cleorodes lichenaria</i>	BRUSSELS LACE	240	508	23 Jun	27 Aug
70.294	<i>Aspitates ochrearia</i>	YELLOW BELLE	26	34	29 May	21 Sep
70.295	<i>Perconia strigillaria</i>	GRASS WAVE	9	31	11 Jun	26 Jun
70.297	<i>Pseudoterpna pruinata</i>	GRASS EMERALD	31	39	08 Jul	26 Aug
70.299	<i>Geometra papilionaria</i>	LARGE EMERALD	53	79	25 Jun	20 Aug
70.300	<i>Comibaena bajularia</i>	BLOTCHED EMERALD	6	6	05 Jul	09 Jul
70.302	<i>Hemistola chrysoprasaria</i>	SMALL EMERALD	69	89	18 Jun	14 Aug
70.303	<i>Jodis lactearia</i>	LITTLE EMERALD	6	8	18 Jun	18 Jul
70.305	<i>Hemitheia aestivaria</i>	COMMON EMERALD	209	389	03 Jul	01 Sep

<i>Code</i>	<i>Taxon</i>	<i>Vernacular</i>	<i>Records</i>	<i>Individuals</i>	<i>Earliest</i>	<i>Latest</i>
70.306	<i>Chlorissa viridata</i>	SMALL GRASS EMERALD	5	14	19 Jun	16 Jul
71.003	<i>Cerura vinula</i>	PUSS MOTH	30	34	18 May	14 Jul
71.005	<i>Furcula furcula</i>	SALLOW KITTEN	77	107	06 May	27 Aug
71.006	<i>Furcula bicuspis</i>	ALDER KITTEN	4	4	06 Jun	13 Jun
71.007	<i>Furcula bifida</i>	POPLAR KITTEN	7	8	06 Jun	08 Jul
71.009	<i>Stauropus fagi</i>	LOBSTER MOTH	88	140	20 May	08 Aug
71.010	<i>Drymonia dodonaea</i>	MARBLED BROWN	14	21	01 Jun	08 Jul
71.011	<i>Drymonia ruficornis</i>	LUNAR MARBLED BROWN	29	35	29 Apr	21 May
71.012	<i>Notodonta dromedarius</i>	IRON PROMINENT	174	195	18 May	29 Aug
71.013	<i>Notodonta ziczac</i>	PEBBLE PROMINENT	239	388	03 May	05 Sep
71.016	<i>Peridea anceps</i>	GREAT PROMINENT	32	37	02 May	17 Jun
71.017	<i>Pheosia tremula</i>	SWALLOW PROMINENT	164	185	05 May	05 Sep
71.018	<i>Pheosia gnoma</i>	LESSER SWALLOW PROMINENT	140	179	03 May	23 Sep
71.020	<i>Pterostoma palpina</i>	PALE PROMINENT	143	179	02 May	04 Sep
71.021	<i>Ptilodon capucina</i>	COXCOMB PROMINENT	61	70	04 May	14 Sep
71.023	<i>Odontosia carmelita</i>	SCARCE PROMINENT	2	2	08 May	15 May
71.025	<i>Phalera bucephala</i>	BUFF-TIP	415	767	28 May	10 Aug
71.027	<i>Clostera curtula</i>	CHOCOLATE-TIP	28	33	05 May	23 Aug
71.028	<i>Clostera pigra</i>	SMALL CHOCOLATE-TIP	3	4	08 Jul	24 Jul
71.029	<i>Clostera anachoreta</i>	SCARCE CHOCOLATE-TIP	1	1	10 Aug	10 Aug
72.001	<i>Scoliopteryx libatrix</i>	HERALD	119	139	Unavailable	Unavailable
72.002	<i>Rivula sericealis</i>	STRAW DOT	582	1452	10 Jun	11 Nov
72.003	<i>Hypena proboscidalis</i>	SNOUT	783	1718	13 Jun	13 Nov
72.004	<i>Hypena rostralis</i>	BUTTONED SNOUT	2	2	19 Jul	04 Dec
72.006	<i>Hypena obsitalis</i>	BLOXWORTH SNOUT	11	12	06 Jun	07 Oct
72.007	<i>Hypena crassalis</i>	BEAUTIFUL SNOUT	7	7	26 Jun	31 Jul
72.009	<i>Leucoma salicis</i>	WHITE SATIN	12	12	13 Jul	05 Aug
72.010	<i>Lymantria monacha</i>	BLACK ARCHES	214	544	17 Jul	26 Sep

Code	Taxon	Vernacular	Records	Individuals	Earliest	Latest
72.012	<i>Euproctis chrysorrhoea</i>	BROWN-TAIL	46	74	13 Jul	10 Aug
72.013	<i>Euproctis similis</i>	YELLOW-TAIL	224	443	12 Jul	12 Sep
72.015	<i>Calliteara pudibunda</i>	PALE TUSSOCK	202	466	25 May	25 Jul
72.016	<i>Dicallomera fascelina</i>	DARK TUSSOCK	7	8	13 Jul	19 Jul
72.017	<i>Orgyia antiqua</i>	VAPOURER	60	64	13 Jul	08 Nov
72.019	<i>Spilosoma lutea</i>	BUFF ERMINE	741	2613	17 May	09 Oct
72.020	<i>Spilosoma lubricipeda</i>	WHITE ERMINE	359	981	12 May	01 Oct
72.022	<i>Diaphora mendica</i>	MUSLIN MOTH	167	252	01 May	16 Jul
72.023	<i>Diacrisia sannio</i>	CLOUDED BUFF	12	24	20 Jun	13 Jul
72.024	<i>Phragmatobia fuliginosa</i>	RUBY TIGER	301	665	03 May	10 Sep
72.025	<i>Parasemia plantaginis</i>	WOOD TIGER	27	57	18 Jun	10 Jul
72.026	<i>Arctia caja</i>	GARDEN TIGER	180	463	05 Jul	11 Sep
72.027	<i>Arctia villica</i>	CREAM-SPOT TIGER	22	38	05 Jun	14 Jul
72.029	<i>Callimorpha dominula</i>	SCARLET TIGER	57	94	25 Jun	22 Aug
72.030	<i>Euplagia quadripunctaria</i>	JERSEY TIGER	185	478	17 Jul	12 Sep
72.031	<i>Tyria jacobaeae</i>	CINNABAR	180	238	16 May	22 Aug
72.034	<i>Utetheisa pulchella</i>	CRIMSON SPECKLED	4	6	02 Oct	04 Oct
72.035	<i>Miltochrista miniata</i>	ROSY FOOTMAN	451	1599	09 Jul	07 Oct
72.036	<i>Nudaria mundana</i>	MUSLIN FOOTMAN	50	128	07 Jul	10 Aug
72.037	<i>Thumatha senex</i>	ROUND-WINGED MUSLIN	19	25	30 Jun	06 Aug
72.038	<i>Cybosia mesomella</i>	FOUR-DOTTED FOOTMAN	40	63	28 Jun	08 Aug
72.039	<i>Pelosia muscerda</i>	DOTTED FOOTMAN	1	1	27 Aug	27 Aug
72.041	<i>Lithosia quadra</i>	FOUR-SPOTTED FOOTMAN	185	1260	14 Jul	08 Oct
72.042	<i>Atolmis rubricollis</i>	RED-NECKED FOOTMAN	29	65	19 Jun	18 Jul
72.043	<i>Eilema depressa</i>	BUFF FOOTMAN	232	971	19 Jun	07 Oct
72.044	<i>Eilema griseola</i>	DINGY FOOTMAN	515	2990	19 Jun	25 Sep
72.045	<i>Eilema lurideola</i>	COMMON FOOTMAN	481	5266	21 Jun	21 Sep
72.046	<i>Eilema complana</i>	SCARCE FOOTMAN	115	332	06 Jul	21 Aug

Code	Taxon	Vernacular	Records	Individuals	Earliest	Latest
72.049	<i>Eilema sororcula</i>	ORANGE FOOTMAN	126	807	27 May	13 Jul
72.053	<i>Herminia tarsipennalis</i>	FAN-FOOT	262	514	18 Jun	29 Aug
72.055	<i>Herminia grisealis</i>	SMALL FAN-FOOT	119	147	17 Jun	14 Aug
72.061	<i>Schrankia costaestrigalis</i>	PINION-STREAKED SNOUT	61	78	17 Jun	07 Oct
72.062	<i>Schrankia taenialis</i>	WHITE-LINE SNOUT	1	1	10 Aug	10 Aug
72.063	<i>Lygephila pastinum</i>	BLACKNECK	25	27	06 Jul	03 Aug
72.067	<i>Phytometra viridaria</i>	SMALL PURPLE-BARRED	13	22	29 May	18 Aug
72.069	<i>Laspeyria flexula</i>	BEAUTIFUL HOOK-TIP	228	378	21 Jun	08 Oct
72.072	<i>Eublemma ostrina</i>	PURPLE MARBLED	2	2	19 Jun	21 Sep
72.073	<i>Eublemma parva</i>	SMALL MARBLED	2	2	07 Oct	08 Oct
72.074	<i>Eublemma purpurina</i>	BEAUTIFUL MARBLED	4	5	15 Jul	07 Oct
72.076	<i>Catocala fraxini</i>	CLIFDEN NONPAREIL	25	26	09 Sep	11 Oct
72.078	<i>Catocala nupta</i>	RED UNDERWING	71	86	07 Aug	17 Oct
72.079	<i>Catocala electa</i>	ROSY UNDERWING	3	3	09 Sep	17 Oct
72.083	<i>Euclidia glyphica</i>	BURNET COMPANION	25	43	04 Jun	14 Jul
72.084	<i>Euclidia mi</i>	MOTHER SHIPTON	9	9	21 May	04 Jul
73.001	<i>Abrostola tripartita</i>	SPECTACLE	592	1115	01 May	19 Oct
73.002	<i>Abrostola triplasia</i>	DARK SPECTACLE	126	153	13 Jun	16 Oct
73.008	<i>Chrysodeixis chalcites</i>	GOLDEN TWIN-SPOT	1	1	30 Aug	30 Aug
73.010	<i>Macdunnoughia confusa</i>	DEWICK'S PLUSIA	6	6	26 Jul	25 Oct
73.012	<i>Diachrysia chrysitis</i>	BURNISHED BRASS	324	472	04 Jun	08 Oct
73.015	<i>Autographa gamma</i>	SILVER Y	1422	8122	05 Jan	09 Dec
73.016	<i>Autographa pulchrina</i>	BEAUTIFUL GOLDEN Y	60	84	08 Jun	04 Oct
73.017	<i>Autographa jota</i>	PLAIN GOLDEN Y	107	217	29 Jun	04 Aug
73.022	<i>Plusia festucae</i>	GOLD SPOT	95	110	19 Jun	01 Oct
73.024	<i>Deltote pygarga</i>	MARBLED WHITE SPOT	146	293	30 May	08 Aug
73.026	<i>Deltote uncula</i>	SILVER HOOK	2	3	19 Jun	06 Jul
73.031	<i>Tyta luctuosa</i>	FOUR-SPOTTED	1	1	10 Jul	10 Jul

<i>Code</i>	<i>Taxon</i>	<i>Vernacular</i>	<i>Records</i>	<i>Individuals</i>	<i>Earliest</i>	<i>Latest</i>
73.032	<i>Colocasia coryli</i>	NUT-TREE TUSSOCK	298	465	23 Apr	12 Sep
73.033	<i>Diloba caeruleocephala</i>	FIGURE OF EIGHT	1	1	23 Oct	23 Oct
73.034	<i>Moma alpium</i>	SCARCE MERVEILLE DU JOUR	2	2	03 Jul	22 Jul
73.036	<i>Acronicta alni</i>	ALDER MOTH	45	70	04 Jun	21 Jul
73.038	<i>Acronicta psi</i>	GREY DAGGER	1	1	09 Aug	09 Aug
73.039	<i>Acronicta aceris</i>	SYCAMORE	92	128	06 Jun	19 Aug
73.040	<i>Acronicta leporina</i>	MILLER	63	86	06 Jun	21 Aug
73.045	<i>Acronicta rumicis</i>	KNOT GRASS	341	590	03 May	04 Sep
73.046	<i>Subacronicta megacephala</i>	POPLAR GREY	138	203	06 Jun	17 Aug
73.047	<i>Craniophora ligustri</i>	CORONET	433	1750	18 May	02 Sep
73.048	<i>Panemeria tenebrata</i>	SMALL YELLOW UNDERWING	1	1	31 May	31 May
73.050	<i>Cucullia absinthii</i>	WORMWOOD	1	1	13 Aug	13 Aug
73.052	<i>Cucullia umbratica</i>	SHARK	23	25	01 Jun	29 Jul
73.058	<i>Cucullia verbasci</i>	MULLEIN	6	6	02 May	17 Jun
73.061	<i>Stilbia anomala</i>	ANOMALOUS	7	7	30 Aug	18 Sep
73.062	<i>Amphipyra pyramidea</i>	COPPER UNDERWING	28	33	30 Jul	22 Sep
73.063	<i>Amphipyra berbera</i>	SVENSSON'S COPPER UNDERWING	15	24	10 Aug	25 Sep
73.064	<i>Amphipyra tragopoginis</i>	MOUSE MOTH	71	112	17 Jul	02 Oct
73.065	<i>Asteroscopus sphinx</i>	SPRAWLER	4	11	24 Oct	11 Nov
73.068	<i>Allophyes oxyacanthae</i>	GREEN-BRINDLED CRESCENT	95	160	30 Sep	11 Nov
73.069	<i>Xylocampa areola</i>	EARLY GREY	225	676	02 Jan	21 May
73.070	<i>Pyrrhia umbra</i>	BORDERED SALLOW	43	85	04 Jun	02 Oct
73.074	<i>Heliothis peltigera</i>	BORDERED STRAW	5	6	17 Jun	30 Aug
73.076	<i>Helicoverpa armigera</i>	SCARCE BORDERED STRAW	34	73	25 Sep	11 Nov
73.082	<i>Cryphia algae</i>	TREE-LICHEN BEAUTY	2	3	23 Aug	23 Aug
73.084	<i>Bryophila domestica</i>	MARBLED BEAUTY	69	82	19 Jun	17 Sep
73.085	<i>Nyctobrya muralis</i>	MARBLED GREEN	114	153	15 Jul	02 Sep
73.086	<i>Pseudeustrotia candidula</i>	SHINING MARBLED	1	1	25 Aug	25 Aug

<i>Code</i>	<i>Taxon</i>	<i>Vernacular</i>	<i>Records</i>	<i>Individuals</i>	<i>Earliest</i>	<i>Latest</i>
73.087	<i>Spodoptera exigua</i>	SMALL MOTTLED WILLOW	8	9	02 Jan	07 Oct
73.091	<i>Elaphria venustula</i>	ROSY MARBLED	1	1	13 Jul	13 Jul
73.092	<i>Caradrina morpheus</i>	MOTTLED RUSTIC	188	317	10 Jun	02 Oct
73.093	<i>Caradrina kadenii</i>	CLANCY'S RUSTIC	16	19	30 Sep	26 Oct
73.095	<i>Caradrina clavipalpis</i>	PALE MOTTLED WILLOW	169	248	21 May	31 Oct
73.096	<i>Hoplodrina octogenaria</i>	UNCERTAIN	1	2	01 Jul	01 Jul
73.099	<i>Hoplodrina ambigua</i>	VINE'S RUSTIC	510	1657	27 May	08 Oct
73.100	<i>Chilodes maritima</i>	SILKY WAINSCOT	12	16	29 Jun	17 Jul
73.101	<i>Charanyca trigrammica</i>	TREBLE LINES	219	540	21 May	13 Jul
73.102	<i>Rusina ferruginea</i>	BROWN RUSTIC	35	40	05 Jun	15 Jul
73.104	<i>Athetis hospes</i>	PORTER'S RUSTIC	1	1	08 Oct	08 Oct
73.105	<i>Dypterygia scabriuscula</i>	BIRD'S WING	15	19	19 Jun	22 Jul
73.107	<i>Mormo maura</i>	OLD LADY	23	23	19 Jul	05 Sep
73.109	<i>Thalpophila matura</i>	STRAW UNDERWING	87	227	31 Jul	29 Sep
73.113	<i>Phlogophora meticulosa</i>	ANGLE SHADES	656	1382	05 Jan	09 Dec
73.114	<i>Euplexia lucipara</i>	SMALL ANGLE SHADES	115	182	08 Jun	29 Sep
73.119	<i>Helotropha leucostigma</i>	CRESCENT	9	9	04 Aug	11 Sep
73.120	<i>Eremobia ochroleuca</i>	DUSKY SALLOW	64	88	18 Jul	23 Aug
73.121	<i>Gortyna flavago</i>	FROSTED ORANGE	109	192	25 Aug	11 Oct
73.123	<i>Hydraecia micacea</i>	ROSY RUSTIC	301	483	23 Jul	11 Nov
73.128	<i>Amphipoea oculea</i>	EAR MOTH	3	4	30 Jul	01 Aug
73.131	<i>Luperina testacea</i>	FLOUNCED RUSTIC	384	1317	29 Jul	11 Oct
73.134	<i>Rhizedra lutosa</i>	LARGE WAINSCOT	23	25	06 Jul	12 Nov
73.135	<i>Sedina buettneri</i>	BLAIR'S WAINSCOT	2	2	02 Oct	08 Oct
73.136	<i>Nonagria typhae</i>	BULRUSH WAINSCOT	14	14	29 Jul	01 Oct
73.137	<i>Arenostola phragmitidis</i>	FEN WAINSCOT	5	5	24 Jul	25 Aug
73.139	<i>Lenisa geminipuncta</i>	TWIN-SPOTTED WAINSCOT	3	4	08 Aug	21 Aug
73.141	<i>Archanaara dissoluta</i>	BROWN-VEINED WAINSCOT	4	4	02 Aug	26 Aug

Code	Taxon	Vernacular	Records	Individuals	Earliest	Latest
73.142	<i>Coenobia rufa</i>	SMALL RUFOUS	19	26	08 Jul	08 Sep
73.144	<i>Denticucullus pygmina</i>	SMALL WAINSCOT	57	87	31 Jul	12 Oct
73.145	<i>Photedes fluxa</i>	MERE WAINSCOT	3	3	13 Jul	03 Aug
73.147	<i>Photedes minima</i>	SMALL DOTTED BUFF	29	47	29 Jun	16 Aug
73.148	<i>Photedes morrisii</i>	MORRIS'S WAINSCOT	2	12	12 Jul	20 Jul
73.151	<i>Globia sparganii</i>	WEBB'S WAINSCOT	8	8	16 Jul	25 Sep
73.154	<i>Apamea remissa</i>	DUSKY BROCADE	71	85	20 Jun	22 Aug
73.155	<i>Apamea epomidion</i>	CLOUDED BRINDLE	79	108	13 Jun	16 Aug
73.156	<i>Apamea crenata</i>	CLOUDED-BORDERED BRINDLE	62	99	17 May	02 Aug
73.158	<i>Apamea sordens</i>	RUSTIC SHOULDER-KNOT	114	185	17 May	31 Jul
73.159	<i>Apamea unanimitis</i>	SMALL CLOUDED BRINDLE	13	14	17 Jun	13 Jul
73.160	<i>Apamea scolopacina</i>	SLENDER BRINDLE	23	28	14 Jul	10 Aug
73.162	<i>Apamea monoglypha</i>	DARK ARCHES	678	3287	17 Jun	26 Sep
73.163	<i>Apamea lithoxyloa</i>	LIGHT ARCHES	99	133	19 Jun	10 Aug
73.164	<i>Apamea sublustris</i>	REDDISH LIGHT ARCHES	11	65	29 Jun	21 Jul
73.168	<i>Lateroligia ophiogramma</i>	DOUBLE LOBED	29	40	10 Jul	05 Aug
73.169	<i>Mesapamea secalis</i>	COMMON RUSTIC	2	2	26 Aug	29 Aug
73.170	<i>Mesapamea didyma</i>	LESSER COMMON RUSTIC	2	2	26 Aug	29 Aug
73.171	<i>Litoligia literosa</i>	ROSY MINOR	59	117	19 Jun	01 Sep
73.172	<i>Mesoligia furuncula</i>	CLOAKED MINOR	110	153	08 Jul	02 Sep
73.173	<i>Oligia strigilis</i>	MARbled MINOR	1	1	28 Jun	28 Jun
73.176	<i>Oligia fasciuncula</i>	MIDDLE-BARRED MINOR	72	128	15 Jun	19 Aug
73.178	<i>Leucochlaena oditis</i>	BEAUTIFUL GOTHIC	17	48	21 Sep	19 Oct
73.179	<i>Tiliacea citrigo</i>	ORANGE SALLOW	10	15	03 Sep	06 Oct
73.180	<i>Tiliacea aurago</i>	BARRED SALLOW	122	380	02 Sep	11 Nov
73.181	<i>Xanthia togata</i>	PINK-BARRED SALLOW	76	102	27 Aug	17 Oct
73.182	<i>Cirrhia icteritia</i>	SALLOW	98	137	10 Sep	07 Nov
73.183	<i>Cirrhia gilvago</i>	DUSKY-LEMON SALLOW	4	4	24 Sep	24 Oct

<i>Code</i>	<i>Taxon</i>	<i>Vernacular</i>	<i>Records</i>	<i>Individuals</i>	<i>Earliest</i>	<i>Latest</i>
73.186	<i>Agrochola lychnidis</i>	BEADED CHESTNUT	267	1500	18 Sep	09 Dec
73.187	<i>Agrochola litura</i>	BROWN-SPOT PINION	54	94	03 Sep	22 Oct
73.188	<i>Agrochola helvola</i>	FLOUNCED CHESTNUT	4	5	03 Oct	23 Oct
73.189	<i>Agrochola lota</i>	RED-LINE QUAKER	107	176	29 Sep	12 Dec
73.190	<i>Agrochola macilenta</i>	YELLOW-LINE QUAKER	113	284	Unavailable	Unavailable
73.192	<i>Agrochola circellaris</i>	BRICK	70	94	Unavailable	Unavailable
73.193	<i>Omphaloscelis lunosa</i>	LUNAR UNDERWING	362	2697	01 Aug	06 Nov
73.194	<i>Conistra vaccinii</i>	CHESTNUT	114	176	Unavailable	Unavailable
73.195	<i>Conistra ligula</i>	DARK CHESTNUT	36	50	Unavailable	Unavailable
73.197	<i>Conistra rubiginea</i>	DOTTED CHESTNUT	7	8	Unavailable	Unavailable
73.200	<i>Lithophane semibrunnea</i>	TAWNY PINION	3	3	Unavailable	Unavailable
73.201	<i>Lithophane socia</i>	PALE PINION	30	32	Unavailable	Unavailable
73.202	<i>Lithophane ornitopus</i>	GREY SHOULDER-KNOT	27	30	Unavailable	Unavailable
73.206	<i>Lithophane leautieri</i>	BLAIR'S SHOULDER-KNOT	108	189	24 Sep	01 Dec
73.209	<i>Xylena vetusta</i>	RED SWORD-GRASS	8	8	Unavailable	Unavailable
73.210	<i>Eupsilia transversa</i>	SATELLITE	30	36	Unavailable	Unavailable
73.212	<i>Ipimorpha retusa</i>	DOUBLE KIDNEY	8	14	30 Jul	29 Aug
73.213	<i>Ipimorpha subtusa</i>	OLIVE	5	8	03 Aug	14 Aug
73.216	<i>Cosmia trapezina</i>	DUN-BAR	297	668	05 Jul	12 Sep
73.217	<i>Cosmia pyralina</i>	LUNAR-SPOTTED PINION	10	28	17 Jul	21 Aug
73.219	<i>Atethmia centrago</i>	CENTRE-BARRED SALLOW	85	150	25 Aug	04 Oct
73.220	<i>Brachylomia viminalis</i>	MINOR SHOULDER-KNOT	10	31	16 Jul	03 Aug
73.221	<i>Parastichtis suspecta</i>	SUSPECTED	4	5	13 Jul	31 Jul
73.222	<i>Apterogenum ypsilon</i>	DINGY SHEARS	13	14	13 Jul	03 Aug
73.223	<i>Dryobota labecula</i>	OAK RUSTIC	10	14	16 Oct	27 Nov
73.224	<i>Griposia aprilina</i>	MERVEILLE DU JOUR	35	53	25 Sep	06 Nov
73.225	<i>Dryobotodes eremita</i>	BRINDLED GREEN	50	61	10 Sep	25 Oct
73.227	<i>Dryobotodes tenebrosa</i>	SOMBRE BROCADE	5	11	23 Sep	15 Oct

<i>Code</i>	<i>Taxon</i>	<i>Vernacular</i>	<i>Records</i>	<i>Individuals</i>	<i>Earliest</i>	<i>Latest</i>
73.229	<i>Trigonophora flammea</i>	FLAME BROCADE	16	38	06 Oct	23 Oct
73.230	<i>Aporophyla australis</i>	FEATHERED BRINDLE	56	262	14 Sep	20 Oct
73.231	<i>Aporophyla lutulenta</i>	DEEP-BROWN DART	2	2	25 Sep	29 Sep
73.233	<i>Aporophyla nigra</i>	BLACK RUSTIC	330	1572	07 Jan	30 Nov
73.234	<i>Dasyptolia templi</i>	BRINDLED OCHRE	3	5	04 Oct	08 Oct
73.235	<i>Polymixis lichenea</i>	FEATHERED RANUNCULUS	184	836	05 Jul	27 Nov
73.237	<i>Polymixis flavicincta</i>	LARGE RANUNCULUS	24	41	12 Sep	11 Oct
73.241	<i>Panolis flammea</i>	PINE BEAUTY	3	3	11 Apr	21 May
73.242	<i>Orthosia incerta</i>	CLOUDED DRAB	193	431	06 Mar	02 Jun
73.243	<i>Orthosia miniosa</i>	BLOSSOM UNDERWING	1	1	04 May	04 May
73.244	<i>Orthosia cerasi</i>	COMMON QUAKER	394	1264	02 Jan	18 Jun
73.245	<i>Orthosia cruda</i>	SMALL QUAKER	146	338	05 Mar	18 May
73.247	<i>Orthosia gracilis</i>	POWDERED QUAKER	60	76	14 Mar	28 May
73.249	<i>Orthosia gothica</i>	HEBREW CHARACTER	571	2169	02 Jan	18 Jun
73.250	<i>Anorthoa munda</i>	TWIN-SPOTTED QUAKER	76	167	07 Mar	06 May
73.252	<i>Tholera cespitis</i>	HEDGE RUSTIC	23	41	14 Aug	04 Oct
73.253	<i>Tholera decimalis</i>	FEATHERED GOTHIC	98	344	14 Aug	20 Sep
73.254	<i>Cerapteryx graminis</i>	ANTLER MOTH	37	176	29 Jul	31 Aug
73.255	<i>Anarta trifolii</i>	NUTMEG	29	39	20 May	28 Aug
73.257	<i>Anarta myrtilli</i>	BEAUTIFUL YELLOW UNDERWING	21	30	06 Jul	30 Aug
73.261	<i>Polia nebulosa</i>	GREY ARCHES	55	71	19 Jun	01 Aug
73.263	<i>Lacanobia w-latinum</i>	LIGHT BROCADE	26	39	31 May	09 Aug
73.264	<i>Lacanobia thalassina</i>	PALE-SHOULDERED BROCADE	13	13	09 Jun	21 Jul
73.265	<i>Lacanobia contigua</i>	BEAUTIFUL BROCADE	5	5	27 Jun	16 Jul
73.266	<i>Lacanobia suasa</i>	DOG'S TOOTH	5	5	07 Jul	28 Aug
73.267	<i>Lacanobia oleracea</i>	BRIGHT-LINE BROWN-EYE	690	2070	17 May	08 Oct
73.270	<i>Melanchra persicariae</i>	DOT MOTH	183	337	28 Jun	03 Sep
73.271	<i>Ceramica pisi</i>	BROOM MOTH	16	22	07 Jun	01 Aug

<i>Code</i>	<i>Taxon</i>	<i>Vernacular</i>	<i>Records</i>	<i>Individuals</i>	<i>Earliest</i>	<i>Latest</i>
73.273	<i>Hada plebeja</i>	SHEARS	41	129	27 May	17 Jul
73.274	<i>Mamestra brassicae</i>	CABBAGE MOTH	168	251	11 May	08 Oct
73.276	<i>Sideridis rivularis</i>	CAMPION	4	4	25 Jul	15 Aug
73.279	<i>Hecatera bicolorata</i>	BROAD-BARRED WHITE	9	9	19 Jun	15 Jul
73.281	<i>Hadena bicruris</i>	LYCHNIS	130	153	12 May	09 Sep
73.282	<i>Hadena compta</i>	VARIED CORONET	1	1	29 Jun	29 Jun
73.286	<i>Hadena perplexa</i>	TAWNY SHEARS	9	10	13 Jul	13 Aug
73.288	<i>Mythimna turca</i>	DOUBLE LINE	8	12	28 Jun	24 Jul
73.289	<i>Mythimna pudorina</i>	STRIPED WAINSCOT	19	25	29 Jun	18 Aug
73.290	<i>Mythimna conigera</i>	BROWN-LINE BRIGHT-EYE	46	162	18 May	21 Aug
73.291	<i>Mythimna favicolor</i>	MATHEW'S WAINSCOT	1	1	02 Sep	02 Sep
73.291	<i>Mythimna pallens</i>	COMMON WAINSCOT	358	751	15 Jun	04 Oct
73.293	<i>Mythimna impura</i>	SMOKY WAINSCOT	269	594	17 Jun	26 Sep
73.294	<i>Mythimna straminea</i>	SOUTHERN WAINSCOT	13	16	06 Jul	14 Aug
73.295	<i>Mythimna vitellina</i>	DELICATE	50	127	02 Oct	27 Nov
73.296	<i>Mythimna unipuncta</i>	AMERICAN WAINSCOT OR WHITE-SPECK	9	9	02 Jul	12 Nov
73.297	<i>Mythimna albipuncta</i>	WHITE-POINT	257	498	31 May	19 Oct
73.298	<i>Mythimna ferrago</i>	CLAY	283	606	25 Jun	21 Sep
73.299	<i>Mythimna litoralis</i>	SHORE WAINSCOT	6	15	05 Jul	26 Jul
73.300	<i>Mythimna l-album</i>	L-ALBUM WAINSCOT	113	292	26 Jun	27 Nov
73.301	<i>Leucania comma</i>	SHOULDER-STRIPED WAINSCOT	74	139	06 Jun	02 Aug
73.302	<i>Leucania obsoleta</i>	OBSCUR E WAINSCOT	6	10	10 Jul	17 Jul
73.304	<i>Leucania loreyi</i>	COSMOPOLITAN	2	3	07 Oct	05 Nov
73.307	<i>Peridroma saucia</i>	PEARLY UNDERWING	69	132	18 Jun	26 Nov
73.314	<i>Euxoa nigricans</i>	GARDEN DART	2	2	11 Aug	24 Aug
73.315	<i>Agrotis bigramma</i>	GREAT DART	1	1	08 Aug	08 Aug
73.316	<i>Agrotis cinerea</i>	LIGHT FEATHERED RUSTIC	12	25	02 Jun	29 Jun
73.317	<i>Agrotis exclamationis</i>	HEART AND DART	926	6227	01 May	30 Sep

<i>Code</i>	<i>Taxon</i>	<i>Vernacular</i>	<i>Records</i>	<i>Individuals</i>	<i>Earliest</i>	<i>Latest</i>
73.319	<i>Agrotis segetum</i>	TURNIP MOTH	174	253	04 May	27 Nov
73.320	<i>Agrotis clavis</i>	HEART AND CLUB	291	1447	10 Jun	22 Aug
73.322	<i>Agrotis vestigialis</i>	ARCHER'S DART	2	2	21 Jul	28 Aug
73.324	<i>Agrotis trux</i>	CRESCENT DART	37	41	14 Jul	15 Aug
73.325	<i>Agrotis puta</i>	SHUTTLE-SHAPED DART	698	3383	05 May	28 Nov
73.327	<i>Agrotis ipsilon</i>	DARK SWORD-GRASS	803	2931	01 Jan	09 Dec
73.328	<i>Axylia putris</i>	FLAME	516	1835	31 May	25 Sep
73.329	<i>Ochropleura plecta</i>	FLAME SHOULDER	1240	6290	02 May	02 Oct
73.332	<i>Diarsia brunnea</i>	PURPLE CLAY	67	126	19 Jun	17 Aug
73.333	<i>Diarsia mendica</i>	INGRAILED CLAY	215	554	05 Jun	08 Sep
73.334	<i>Diarsia rubi</i>	SMALL SQUARE-SPOT	370	823	27 May	04 Oct
73.336	<i>Cerastis rubricosa</i>	RED CHESTNUT	29	33	06 Mar	08 May
73.338	<i>Lycophotia porphyrea</i>	TRUE LOVER'S KNOT	184	875	06 Jun	02 Aug
73.342	<i>Noctua pronuba</i>	LARGE YELLOW UNDERWING	1369	10099	10 Jun	10 Dec
73.343	<i>Noctua fimbriata</i>	BROAD-BORDERED YELLOW UNDERWING	270	380	05 Jul	17 Oct
73.345	<i>Noctua comes</i>	LESSER YELLOW UNDERWING	699	2189	01 Jul	10 Dec
73.346	<i>Noctua interjecta</i>	LEAST YELLOW UNDERWING	112	202	21 Jun	11 Nov
73.348	<i>Noctua janthe</i>	LESSER BROAD-BORDERED YELLOW UNDERWING	552	5430	15 Jul	30 Sep
73.352	<i>Anaplectoides prasina</i>	GREEN ARCHES	48	50	21 Jun	24 Sep
73.353	<i>Xestia baja</i>	DOTTED CLAY	2	2	30 Jun	05 Aug
73.355	<i>Xestia castanea</i>	NEGLECTED RUSTIC	4	4	01 Sep	26 Sep
73.356	<i>Xestia agathina</i>	HEATH RUSTIC	10	52	29 Aug	02 Oct
73.357	<i>Xestia xanthographa</i>	SQUARE-SPOT RUSTIC	619	3042	29 Jun	19 Oct
73.358	<i>Xestia sexstrigata</i>	SIX-STRIPED RUSTIC	108	287	22 Jun	04 Oct
73.359	<i>Xestia c-nigrum</i>	SETACEOUS HEBREW CHARACTER	1020	8108	27 May	11 Nov
73.361	<i>Xestia triangulum</i>	DOUBLE SQUARE-SPOT	244	468	19 Jun	15 Aug
73.365	<i>Eugnorisma glareosa</i>	AUTUMNAL RUSTIC	12	12	11 Sep	18 Oct
73.368	<i>Naenia typica</i>	GOTHIC	35	40	04 Jul	30 Aug

<i>Code</i>	<i>Taxon</i>	<i>Vernacular</i>	<i>Records</i>	<i>Individuals</i>	<i>Earliest</i>	<i>Latest</i>
74.002	<i>Meganola albula</i>	KENT BLACK ARCHES	100	149	19 Jun	29 Aug
74.003	<i>Nola cucullatella</i>	SHORT-CLOAKED MOTH	44	65	28 Jun	26 Jul
74.004	<i>Nola confusalis</i>	LEAST BLACK ARCHES	77	119	03 May	28 Jun
74.007	<i>Bena bicolorana</i>	SCARCE SILVER-LINES	5	6	08 Jul	14 Jul
74.008	<i>Pseudoips prasinana</i>	GREEN SILVER-LINES	89	96	19 Jun	25 Aug
74.009	<i>Nycteola revayana</i>	OAK NYCTEOLINE	45	52	06 Mar	11 Nov
74.011	<i>Earias clorana</i>	CREAM-BORDERED GREEN PEA	50	83	06 Jun	06 Sep
74.012	<i>Earias insulana</i>	EGYPTIAN BOLLWORM	1	1	02 Oct	02 Oct

2013 Significant Resident and Migrant Species Report

Unless stated otherwise, all records are adult moths observed at light traps. Records with vague dates, undetermined records and critical species where there is doubt are excluded (although 10km square is reported). Also excluded are species where the number of recorded 10km squares >10 and the number of records per species is >25. Sites are removed from confidential species. Where no quantity is given, a single moth is assumed. All individual counts are minimum counts.

- 3.004 *Phymatopus hecta* (Linnaeus, 1758) **GOLD SWIFT** Local
Recorded in: SU10; SY99; SZ19. SY99/9794 Beacon Hill (SY9794); 15 Jul; 16 Jul (A Baker).
- 50.001 *Cossus cossus* (Linnaeus, 1758) **GOAT MOTH** Nb
Recorded in: SY88; SY98; SZ09; SZ19. SY88/MT 0010 East Lulworth (SY8582); 30 Jun (L J Hill). SY98/9785 Rempstone (SY9785); field, larval on 04 Sep (L Aggas). SZ09/0190 Poole, Baiters Park (SZ0190); lit window, 16 Jul, leg. B P Pickess (M Wilson).
- 54.002 *Adscita statures* (Linnaeus, 1758) **FORESTER** Local
Recorded in: ST60; ST71; SU01; SY69. ST60/6000 Lankham Bottom (ST6000); field, 2 on 06 Jul; field, 01 Jul; field, 4 on 06 Jul (N Spring). ST60/6100 Lankham Bottom (ST6100); field, 26 Jun; field, 01 Jul (C Paul). ST60/6602 Cerne Abbas (ST6602); field, 25 Jun (D Fowler). ST71/002/02 Rooksmoor (SMU 2) (ST7411); field, 05 Jul (N Spring). ST71/7411 Rooksmoor (ST7411); field, 21 Jun; field, 05 Jul (M S Warren). SY69/6296 Southfield Hog Cliff, S6 (SY6296); field, 05 Jul (I Middlebrook). SY69/6297 Southfield Hog Cliff, S5 (SY6297); field, 05 Jul (I Middlebrook). UKBMS, 1019. 2 (SU0418); field, 08 Jul (L Smith).
- 54.003 *Adscita geryon* (Hübner, [1813]) **CISTUS FORESTER** Nb
Recorded in: SY69. SY69/6296 Southfield Hog Cliff, S6 (SY6296); field, 05 Jul (I Middlebrook). SY69/6297 Southfield Hog Cliff, S5 (SY6297); field, 05 Jul (I Middlebrook). UKBMS Southfield Hog Cliff s. 5 (SY6297); field, 4 on 29 Jun (C R Burningham).
- 54.009 *Zygaena loniceræ* (Scheven, 1777) **NARROW-BORDERED FIVE-SPOT BURNET**
Recorded in: ST70; ST81; SU10; SY67. Higher Hill (ST7202); field, 17 Jul (M S Parsons). ST81/8916 Stubhampton Bottom (ST8916); field, 18 Jun (M S Parsons). SY67/6779 Weymouth (SY6779); field, 10 on 30 Jun; 10 on 30 Jun (R Ford).
- 54.010 *Zygaena trifolii* (Esper, 1783) **FIVE-SPOT BURNET** Local
Recorded in: ST71; SU01; SY66; SY79; SY88; SZ07; SZ08. ST71/7310 Alners Gorse (ST7310); field, 19 Jul (N Spring). ST71/7411 Rooksmoor (ST7411); field, 3 on 27 Jun (M S Warren). ST71/7510 Deadmoor Common (ST7510); field, 06 Jul; field, 2 on 06 Jul (N Spring). ST71/7511 Deadmoor Common (ST7511); field, 06 Jul; field, 14 Jul (N Spring). SU01/0810 'Resthaven' (SU0810); field, 2 on 23 Jun (H R Chittenden). SY66/6768 Portland (SY6768); field, 25 Jul (J Lucas). SY79/MT 0001 Puddletown (SY7695); field, 01 Jul (H G Wood Homer). SY88/8280 West Lulworth (SY8280); field, 100 on 01 Jul (M S Warren). SZ07/B001 Townsend (SZ0278); field, 06 Jul (N Smithson). SZ08 (SZ0381); field, 26 Jul (A Marler).
- 65.011 *Tethea or* ([Denis & Schiffermüller], 1775) **POPLAR LUTESTRING** Local
Recorded in: SU11. SU11/MT 0001 Alderholt (SU1112); 08 Jul (T Morris).
- 66.005 *Eriogaster lanestris* (Linnaeus, 1758) **SMALL EGGAR** Nb
Recorded in: ST60; ST61; ST71; ST80; SY67; SY78; SY79. Broadmayne, Spring Gardens (SY7387); 24 Apr (P Bruce-Jones). ST60/6108 Leigh, Wesley House (ST6108); 19 Apr (G A Nash). ST61/6013 Thornford (ST6013); 16 Apr (N J Howell). ST61/6610 Ryewater Farm (ST6610); field, larval web on 12 Aug; field, larval web on 13 Aug (J Seawright). ST71/002/02 Rooksmoor (SMU 2) (ST7411); field, larval web on 11 Jun (M S Parsons). ST80/8808 Blandford Forum (ST8808); field, larval web on 18 Jun (M S Parsons). SY67/MT 0006 Weymouth (SY6778); 23 Apr (J Oughton). SY79/MT 0001 Puddletown (SY7695); 23 Apr (H G Wood Homer).
- 69.004 *Agrius convolvuli* (Linnaeus, 1758) **CONVOLVULUS HAWK-MOTH** Migrant
Recorded in: ST60; SY39; SY49; SY66; SY67; SY68; SY78; SY79; SZ07; SZ09. Merley, Sopwith Crescent (SZ0298); 06 Oct, leg. R W Steedman (R W Steedman, B Steedman). Moreton, The Avenue (SY7989); field, 28 Aug (Z Randle). ST60/6108 Leigh, Wesley House (ST6108); 29 Sep (G A Nash). SY39/MT 0001 Charmouth (SY3693); 08 Oct (G Sell). SY49/4094 Hardown Hill (SY4094); field, 09 Oct (S Warren). SY49/MT 0002 Bothenhampton (SY4892); 02 Oct; 08 Oct (M S Parsons). SY66/MT 0001 Portland (SY6868); 26 Aug; 30 Aug; 31 Aug; 01 Sep; 28 Sep; 29 Sep; 04 Oct; 05 Oct (M Cade). SY67/6870 Isle of Portland (SY6870); 2 on 01 Oct (D Saunders). SY68/MT 0003 Weymouth (SY6784); 22 Sep; 01 Oct (P Harris). SY79/MT 0001 Puddletown (SY7695); 12 Sep; 23 Sep; 24 Sep; 25 Sep; 26 Sep; 01 Oct; 08

Oct (H G Wood Homer). SZ07/0377 Durlston Country Park (SZ0377); 2 on 03 Oct, leg. S Breeze; 10 on 04 Oct, leg. S Breeze; 10 on 04 Oct, leg. S Whitehouse (J Gibbons, S Breeze). SZ07/MT 0002 Swanage (SZ0278); 07 Oct (P England).

69.005 *Acherontia atropos* (Linnaeus, 1758) **DEATH'S-HEAD HAWK-MOTH** Migrant

Recorded in: SY67; SY88; SY98. SY67/MT 0006 Weymouth (SY6778); field, larval on 10 Nov, leg. D Mead (D Mead, J Oughton). Wareham, Westport Road (SY9187); 28 Sep (J E Slingsby). Winfrith Newburgh, Water Lane (SY8085); indoors, larval on 09 Sep, leg. L Pullen (R Markham).

69.008 *Hemaris tityus* (Linnaeus, 1758) **NARROW-BORDERED BEE HAWK-MOTH** Na

Recorded in: SY59. SY59/5497 Powerstock Common (SY5497); field, 18 May (R Jones).

69.014 *Hyles gallii* (Rottemburg, 1775) **BEDSTRAW HAWK-MOTH** Migrant

Recorded in: SY39; SY67; SY99; SZ09. SY39/MT 0001 Charmouth (SY3693); 02 Sep (G Sell). SY67/6870 Isle of Portland (SY6870); 25 Aug; 27 Aug (D Saunders). SY99/9794 Beacon Hill (SY9794); 03 Jul (A Baker). SZ09/0493 Newtown (SZ0493); field, 22 Sep (A Barlow).

70.002 *Idaea muricata* (Hufnagel, 1767) **PURPLE-BORDERED GOLD** Nb

Recorded in: SY79; SY89; SY99; SZ08; SZ09. Spur Heath north (SZ0284); field, 2 on 18 Jul (J Seawright). SY79/MT 0002 Tolpuddle (SY7994); 19 Jul (J Francis). SY89/8892 Bloxworth Heath (SY8892); 15 Jul, leg. M S Parsons (L J Hill, M S Parsons). SY99/9191 Decoy Heath (SY9191); field, 07 Jul (J Oughton). SZ08/002/11 Studland and Godlingston Heaths (SMU 11) (SZ0284); field, 2 on 18 Jul (J Seawright). SZ08/0285 Studland (SZ0285); field, 17 Jul (J Seawright). SZ08/0384 Studland (SZ0384); field, 11 Jul; 13 Jul (J Seawright). SZ08/0385 Third Ridge, Studland Heath (SZ0385); field, 10 Jul (J Seawright). SZ09/0295 Canford Heath (SZ0295); 16 Jul, leg. V Giavarini (J Francis, M J Lawson, V Giavarini). SZ09/0295 Poole (SZ0295); 16 Jul (L J Hill).

70.010 *Idaea sylvestraria* (Hübner, [1799]) **DOTTED BORDER WAVE** Nb

Recorded in: SY89; SZ09. SY89/8892 Bloxworth Heath (SY8892); 15 Jul, leg. M S Parsons (L J Hill, M S Parsons). SZ09/0295 Poole (SZ0295); 16 Jul (L J Hill).

70.017 *Idaea degeneraria* (Hübner, [1799]) **PORTLAND RIBBON WAVE** RDB3

Recorded in: SY39; SY49. SY39/MT 0001 Charmouth (SY3693); 09 Sep; 04 Oct (G Sell). SY49/MT 0002 Bothenhampton (SY4892); 05 Oct (M S Parsons).

70.025 *Scopula immutata* (Linnaeus, 1758) **LESSER CREAM WAVE** Local

Recorded in: ST40; ST70; SY79; SY88; SZ07. ST40/MT 0002 Beaminster (ST4801); 30 Jul (M Raper). ST70/MT 0003 Higher Ansty (ST7603); 2 on 10 Aug (M S Warren). SY79/MT 0001 Puddletown (SY7695); 19 Jul; 21 Jul (H G Wood Homer). SY88/MT 0010 East Lulworth (SY8582); 2 on 26 Jun; 3 on 28 Jun (L J Hill). SZ07/MT 0002 Swanage (SZ0278); 17 Jul (P England).

70.028 *Scopula emutaria* (Hübner, [1809]) **ROSY WAVE** Nb

Recorded in: SY67. SY67/6676 Weymouth (SY6676); 28 Aug (D Foot). SY67/MT 0002 Weymouth (SY6676); 28 Aug (D Foot).

70.030 *Cyclophora pendularia* (Clerck, 1759) **DINGY MOCHA** RDB3

Recorded in: ST61; ST71; SU00; SY78; SY79; SY88; SY89; SY98; SY99; SZ08. Moreton Forest (SY8191); field, larval on 21 Aug (M S Parsons). Moreton Plantation (SY8190); field, larval on 21 Aug (M S Parsons). Park Copse (SU0502); field, 3 larval on 02 Sep (M S Parsons). ST61/6610 Ryewater Farm (ST6610); 31 Jul (W T Franklin). ST71/7511 Deadmoor Common (ST7511); field, 3 larval on 03 Sep (M S Parsons). SU00/01 Holt and West Moors Heaths (SU0503); field, 6 larval on 02 Sep (M S Parsons). SU00/0502 Holt Heath (SU0502); field, larval on 02 Sep (M S Parsons). SY79/MT 0001 Puddletown (SY7695); 31 Jul (H G Wood Homer). SY79/MT 0002 Tolpuddle (SY7994); 08 Aug (J Francis). SY88/8086 Winfrith Heath (SY8086); field, 2 larval on 21 Aug (M S Parsons). SY88/8087 Winfrith Heath (SY8087); field, larval on 20 Aug (M S Parsons). SY89/8092 Affpuddle Heath (SY8092); field, 2 larval on 21 Aug (M S Parsons). SY89/8193 Briantspuddle (SY8193); 31 Jul (J D McMillan). SY98/9288 Church Knowle (SY9288); 07 Aug (R W Adams). SY99/9794 Beacon Hill (SY9794); 07 Aug (A Baker). SZ08/02 Studland and Godlingston Heaths (SZ0383); 01 Aug; 01 Aug, leg. DMG Facebook (J Seawright). Tadnoll Heath (SY7987); field, 2 larval on 09 Sep (M S Parsons). Throop Heath (SY8291); field, 6 larval on 21 Aug (M S Parsons). Uddens Plantation & Ferndown Forest (SU0602); field, 3 larval on 02 Sep (M S Parsons).

70.031 *Cyclophora annularia* (Fabricius, 1775) **MOCHA** Nb

Recorded in: ST60; ST61; ST71; ST80; SU00; SY39; SY49; SY79; SY88; SZ07. Dorset (SU0506); 09 Aug (N Hall). Netherbury (SY4699); 2 on 10 Aug; 11 Aug; 12 Aug; 2 on 16 Aug (R Payne). ST60/6108 Leigh, Wesley House (ST6108); 01 Jun; 26 Jun; 09 Aug; 13 Aug; 22 Aug (G A Nash). ST61/6610 Ryewater Farm (ST6610); 2 on 09 Aug; 09 Aug; 31 Jul; 21 Jun; 8 on 09 Aug; 09 Aug (W T Franklin). ST71/7310 Alners Gorse (ST7310); 03 Aug, leg. J Oughton

- (J Oughton, N Spring, S Foote). ST80/8807 Blandford Forum (ST8807); 3 on 10 Aug (C R Burningham). SY39/3393 Lyme Regis (SY3393); 08 Jun; 28 Aug (M Waters). SY39/MT 0001 Charmouth (SY3693); 28 Aug (G Sell). SY49/MT 0002 Bothenhampton (SY4892); 07 Jul; 2 on 23 Aug (M S Parsons). SY79/MT 0001 Puddletown (SY7695); 26 Aug; 28 Aug (H G Wood Homer). SY88/MT 0004 East Holme (SY8986); 23 Aug (J H S Cox). SZ07/MT 0002 Swanage (SZ0278); 23 Aug (P England).
- 70.033 *Cyclophora puppillaria* (Hübner, [1799]) **BLAIR'S MOCHA** Migrant
Recorded in: ST80; SY39; SY49; SY66; SY67; SY68; SY79; SY88. ST80/8304 Winterborne Stickland (ST8304); 18 Oct (W W Bown). SY39/MT 0001 Charmouth (SY3693); 04 Oct; 07 Oct (G Sell). SY49/MT 0002 Bothenhampton (SY4892); 02 Oct (M S Parsons). SY66/MT 0001 Portland (SY6868); 3 on 06 Oct; 07 Oct (M Cade). SY67/6870 Isle of Portland (SY6870); 08 Oct (D Saunders). SY68/MT 0003 Weymouth (SY6784); 01 Oct (P Harris). SY79/MT 0001 Puddletown (SY7695); 02 Oct (H G Wood Homer). SY88/MT 0010 East Lulworth (SY8582); 08 Oct (L J Hill).
- 70.034 *Cyclophora ruficiliaria* (Herrich-Schäffer, 1855) **JERSEY MOCHA** Channel Islands only
Recorded in: SY67. SY67/MT 0006 Weymouth (SY6778); 06 Aug, leg. P H Sterling; female on 06 Aug, gen. det.; 07 Sep, gen. det. (J Oughton).
- 70.043 *Scotopteryx bipunctaria* ([Denis & Schiffermüller], 1775) **CHALK CARPET** Nb
Recorded in: ST81; SY39; SY48; SY67; SY87; SZ07. Hive beach (SY4988); 30 Jul (M Raper). Portland, Perryfields and Bottomcombe (SY6971); field, 28 Aug (R Jones). ST81/8818 Clubmen's Down (ST8818); field, 3 on 18 Aug (L de Whalley). SY39/MT 0001 Charmouth (SY3693); 26 Jul; 07 Aug; 08 Aug; 2 on 21 Aug; 2 on 22 Aug; 26 Aug; 28 Aug; 04 Sep; 05 Sep (G Sell). SY48/4988 Burton Bradstock (SY4988); field, 4 on 18 Jul (M S Parsons). SY67/6870 Isle of Portland (SY6870); 04 Aug; 25 Aug (D Saunders). SY67/6872 Isle of Portland (SY6872); field, 17 Jul (C Bulman). SY67/6970 Isle of Portland (SY6970); field, 28 Aug (R Jones). SY67/6972 Isle of Portland (SY6972); 2 on 10 Aug; 3 on 10 Aug (J Oughton). SY67/MT 0005 Portland (SY6871); 16 Aug; 26 Aug (J Williamson). SY87/05/18 South Dorset Coast (SMU 18) (SY8279); field, 18 Aug (S Ellis). SZ07/0377 Durlston Country Park (SZ0377); 10 Aug, leg. L J Hill (L J Hill, A O J Evans, R Terry).
- 70.052 *Xanthorhoe ferrugata* (Clerck, 1759) **DARK-BARRED TWIN-SPOT CARPET**
Recorded in: SU10; SY67; SZ08; SZ19. SY67/MT 0006 Weymouth (SY6778); 19 Jun, leg. P H Sterling; 06 Aug (J Oughton). SZ08/02 Studland and Godlingston Heaths (SZ0383); 3 on 20 Aug, leg. L J Hill (J Seawright).
- 70.057 *Catarhoe rubidata* ([Denis & Schiffermüller], 1775) **RUDDY CARPET** Nb
Recorded in: SY67; SY68. SY67/6676 Weymouth (SY6676); 13 Jul (D Foot). SY68/MT 0003 Weymouth (SY6784); 15 Jul (P Harris).
- 70.062 *Epirrhoe rivata* (Hübner, [1813]) **WOOD CARPET** Local
Recorded in: SY39; SY49; SY79; SZ07. SY39/MT 0001 Charmouth (SY3693); 30 Jun; 21 Jul (G Sell). SY49/MT 0002 Bothenhampton (SY4892); 10 Jul (M S Parsons). SY79/MT 0001 Puddletown (SY7695); 29 Jun; 01 Jul; 08 Jul; 14 Jul; 3 on 16 Jul (H G Wood Homer). SZ07/MT 0002 Swanage (SZ0278); 06 Jul; 22 Jul; 24 Jul (P England).
- 70.063 *Epirrhoe galiata* ([Denis & Schiffermüller], 1775) **GALIUM CARPET** Local
Recorded in: SY67; SY78; SZ07. Broadmayne, Spring Gardens (SY7387); 26 Sep (P Bruce-Jones). SY67/6676 Weymouth (SY6676); 28 Aug (D Foot). SY67/6870 Isle of Portland (SY6870); 15 Jul; 25 Aug (D Saunders). SY67/MT 0002 Weymouth (SY6676); 28 Aug (D Foot). SY67/MT 0005 Portland (SY6871); 06 Jul; 18 Jul; 26 Jul; 16 Aug; 04 Sep; 3 on 21 Sep; 25 Sep (J Williamson). SY67/MT 0006 Weymouth (SY6778); 21 Aug (J Oughton). SZ07/0377 Durlston Country Park (SZ0377); 2 on 23 Aug, leg. S Breeze; 2 on 10 Aug, leg. L J Hill; 21 Sep; 22 Sep (J Gibbons, S Breeze).
- 70.064 *Euphyia biangulata* (Haworth, 1809) **CLOAKED CARPET** Nb
Recorded in: SY67; SY68; SY79; SY88. SY67/6676 Weymouth (SY6676); 21 Jul (D Foot). SY67/MT 0002 Weymouth (SY6676); 21 Jul (D Foot). SY68/MT 0001 Dorchester (SY6889); 19 Jul (J E Down). SY68/MT 0003 Weymouth (SY6784); 16 Jul (P Harris). SY79/MT 0001 Puddletown (SY7695); 20 Jun (H G Wood Homer). SY88/MT 0004 East Holme (SY8986); 10 Aug (J H S Cox).
- 70.068 *Mesoleuca albicillata* (Linnaeus, 1758) **BEAUTIFUL CARPET**
Recorded in: ST80; ST91; SY88; SZ07. Rushmore Estate Half Hide Coppice Compt F2. 3, 1 Site D (ST9516); 08 Jul (D J Evans). Rushmore Estate Half Hide Coppice Compt F4, 2 (ST9516); 08 Jul (D J Evans). ST80/8304 Winterborne Stickland (ST8304); 13 Jul; 16 Jul; 2 on 04 Aug (W W Bown). SY88/MT 0010 East Lulworth (SY8582); 17 Jul (L J Hill). SZ07/0377 Durlston Country Park (SZ0377); 2 on 10 Aug, leg. L J Hill (L J Hill, A O J Evans, R Terry). SZ07/MT 0002 Swanage (SZ0278); 21 Aug (P England).

- 70.069 *Pelurga comitata* (Linnaeus, 1758) **DARK SPINACH**
Recorded in: SU00; SY66; SY68. Dorset (SU0506); 09 Aug (N Hall). SY66/MT 0001 Portland (SY6868); 19 Jul (M Cade). SY68/MT 0007 Weymouth (SY6982); 08 Aug ('Ricky' Lambert).
- 70.070 *Larentia clavaria* (Haworth, 1809) **MALLOW**
Recorded in: ST60; SY49; SY67; SY89. ST60/6108 Leigh, Wesley House (ST6108); 24 Sep; 04 Oct (G A Nash). SY49/MT 0002 Bothenhampton (SY4892); 01 Oct; 04 Oct (M S Parsons). SY67/6676 Weymouth (SY6676); 08 Oct (D Foot). SY67/6870 Isle of Portland (SY6870); 05 Oct; 2 on 07 Oct; 3 on 08 Oct; 13 Oct; 14 Oct; 15 Oct; 2 on 16 Oct; 2 on 17 Oct; 18 Oct (D Saunders). SY67/MT 0002 Weymouth (SY6676); 08 Oct (D Foot). SY89/8193 Briantspuddle (SY8193); 24 Sep; 02 Oct; 24 Oct (J D McMillan).
- 70.092 *Eulithis mellinata* (Fabricius, 1787) **SPINACH**
Recorded in: SZ07; SZ09; SZ19. SZ07/0377 Durlston Country Park (SZ0377); 26 Jul, leg. J Gibbons (J Gibbons, S Breeze). SZ09/MT 0006 Poole (SZ0291); 07 Jul (V Giavarini).
- 70.099 *Colostygia olivata* ([Denis & Schiffermüller], 1775) **BEECH-GREEN CARPET Local**
Recorded in: SY67. SY67/6971 Church Ope Cove (SY6971); field, 06 Sep (S Foote).
- 70.107 *Epirrita dilutata* ([Denis & Schiffermüller], 1775) **NOVEMBER MOTH**
Recorded in: SU10; SY89; SZ19. SY89/8193 Briantspuddle (SY8193); male on 18 Oct, gen. det.; male on 20 Oct, gen. det. (J D McMillan).
- 70.117 *Minoa murinata* (Scopoli, 1763) **DRAB LOOPER Nb**
Recorded in: ST81; ST91; SU01. Garston Wood (SU0019); field, 04 Jun (M S Parsons). ST81/8916 Stubhampton Bottom (ST8916); field, 18 Jun (M S Parsons). ST91/9015 Stubhampton Bottom (ST9015); field, 18 Jun (M S Parsons). ST91/9016 Stubhampton Bottom (ST9016); field, 18 Jun; field, 3 on 18 Jun (M S Parsons). SU01/001 Cranborne Chase SSSI (SU0019); field, 04 Jun (M S Parsons).
- 70.124 *Pareulype berberata* ([Denis & Schiffermüller], 1775) **BARBERRY CARPET RDB1**
Recorded in: ST80. Field, 10 larval on 23 Sep (M S Parsons).
- 70.130 *Odezia atrata* (Linnaeus, 1758) **CHIMNEY SWEEPER**
Recorded in: SY59. Clift Lane Meadows, Straws (SY5598); field, 15 Jun; field, 02 Jul (S Masters). Lower Kingcombe, Kingcombe Meadows (Compt B3) (SY5599); field, 03 Jul (M Fontein).
- 70.134 *Perizoma bifaciata* (Haworth, 1809) **BARRED RIVULET Local**
Recorded in: ST90; SY39; SY58; SY67; SY68; SY78; SY79; SZ07. ST90/9602 Badbury Rings (ST9602); 3 on 14 Aug; 29 Aug (V Giavarini). SY39/MT 0001 Charmouth (SY3693); 25 Jul; 14 Aug (G Sell). SY58/5387 West Bexington (SY5387); 3 on 10 Aug (D Foot). SY58/MT 0004 Puncknowle (SY5387); 3 on 10 Aug; 3 on 14 Aug (D Foot). SY67/6870 Isle of Portland (SY6870); 18 Jul (D Saunders). SY67/6972 Isle of Portland (SY6972); 3 on 10 Aug (J Oughton). SY67/MT 0005 Portland (SY6871); 2 on 26 Jul (J Williamson). SY68/MT 0003 Weymouth (SY6784); 31 Jul; 27 Aug (P Harris). SY78/MT 0008 West Stafford (SY7289); 03 Aug, leg. E S Rose (E S Rose, A Rose). SY79/MT 0001 Puddletown (SY7695); 30 Jul (H G Wood Homer). SZ07/0377 Durlston Country Park (SZ0377); 2 on 09 Aug, leg. L J Hill; 2 on 10 Aug, leg. L J Hill (L J Hill, A O J Evans, R Terry).
- 70.137 *Perizoma albulata* ([Denis & Schiffermüller], 1775) **GRASS RIVULET Local**
Recorded in: ST72; ST91; SU11; SY67; SZ07. ST72/MT 0001 Gillingham (ST7925); 20 Jun (G R Hopkins). ST91/9119 Melbury Down (ST9119); field, 04 Jul (M S Parsons). SU11/MT 0001 Alderholt (SU1112); 3 on 19 Jun (T Morris). SY67/6870 Isle of Portland (SY6870); 19 Jun (D Saunders). SZ07/0377 Durlston Country Park (SZ0377); 11 Jun (S J Breeze). SZ07/MT 0002 Swanage (SZ0278); 26 Jun (P England).
- 70.143 *Pasiphila chloerata* (Mabille, 1870) **SLOE PUG**
Recorded in: SY68. SY68/MT 0002 Chickerell (SY6580); 28 Jun; 29 Jun (C Pinder). SY68/MT 0003 Weymouth (SY6784); 20 Jun (P Harris).
- 70.150 *Eupithecia linariata* ([Denis & Schiffermüller], 1775) **TOADFLAX PUG**
Recorded in: SY67. SY67/6676 Weymouth (SY6676); 19 Jul; 20 Aug (D Foot).
- 70.155 *Eupithecia venosata* (Fabricius, 1787) **NETTED PUG Local**
Recorded in: SY79; SY88. SY79/MT 0001 Puddletown (SY7695); 28 Jun (H G Wood Homer). SY88/8084 Winfrith Newburgh (SY8084); 19 Jun (L Pullen).

- 70.166 *Eupithecia simpliciatata* (Haworth, 1809) **PLAIN PUG** Local
Recorded in: SY49; SY67. SY49/MT 0002 Bothenhampton (SY4892); 02 Aug (M S Parsons). SY67/6676 Weymouth (SY6676); 14 Jul; 18 Jul; 20 Jul (D Foot). SY67/MT 0006 Weymouth (SY6778); 21 Jul (J Oughton).
- 70.169 *Eupithecia innotata* (Hufnagel, 1767) **ANGLE-BARRED PUG** Unconfirmed
Recorded in: SY49; SY68; SY78. SY49/MT 0002 Bothenhampton (SY4892); 29 Aug (M S Parsons). SY68/MT 0001 Dorchester (SY6889); 05 Jul, leg. P H Sterling (J E Down). SY78/MT 0008 West Stafford (SY7289); 2 on 31 Aug, leg. E S Rose (E S Rose, A Rose).
- 70.172 *Eupithecia distinctaria* Herrich-Schäffer, 1848 **THYME PUG** Nb
Recorded in: SY67. SY67/6870 Isle of Portland (SY6870); 19 Jun; 16 Jun; 3 on 19 Jun (D Saunders).
- 70.188 *Eupithecia succenturiata* (Linnaeus, 1758) **BORDERED PUG**
Recorded in: ST80; SY68; SY78; SY79; SY89. Broadmayne, Spring Gardens (SY7387); 22 Jul (P Bruce-Jones). ST80/8304 Winterborne Stickland (ST8304); 25 Jul (W W Bown). SY68/MT 0001 Dorchester (SY6889); 17 Jul; 24 Jul (J E Down). SY79/MT 0001 Puddletown (SY7695); 18 Jul; 24 Jul; 01 Aug (H G Wood Homer). SY89/8193 Briantspuddle (SY8193); 18 Jul; 08 Aug (J D McMillan).
- 70.195 *Chesias legatella* ([Denis & Schiffermüller], 1775) **STREAK**
Recorded in: SY88. SY88/MT 0001 East Lulworth (SY8583); 11 Nov (L J Hill). SY88/MT 0010 East Lulworth (SY8582); 12 Nov (L J Hill).
- 70.206 *Abraxas sylvata* (Scopoli, 1763) **CLOUDED MAGPIE** Local
Recorded in: ST70; SZ08. ST70/7907 Ibberton Hill (ST7907); 15 Jul (L de Whalley). SZ08/0288 Brownsea Island (SZ0288); 14 Jul (C Thain).
- 70.211 *Macaria notata* (Linnaeus, 1758) **PEACOCK MOTH** Local
Recorded in: SY67; SY98. Dorset (SY9386); 10 Aug (D Derrick). SY67/6870 Isle of Portland (SY6870); 23 Aug, gen. det. (D Saunders).
- 70.218 *Chiasmia clathrata* (Linnaeus, 1758) **LATTICED HEATH**
Recorded in: SY39; SY66; SY88; SY89; SZ08; SZ09. Frankland Crescent, Parkstone (SZ0591); 22 Aug (J Seawright). SY39/MT 0001 Charmouth (SY3693); 24 Aug (G Sell). SY66/MT 0001 Portland (SY6868); 2 on 23 Aug (M Cade). SY88/MT 0010 East Lulworth (SY8582); 01 Sep (L J Hill). SZ08/0385 Studland (SZ0385); netted, 19 Jun (J C Winterbottom). Tonerspuddle Heath (SY8291); field, 07 Jul (M S Warren).
- 70.219 *Chiasmia aestimaria* (Hübner, [1809]) **TAMARISK PEACOCK** Vagrant/Accidental
Recorded in: SY66. SY66/MT 0001 Portland (SY6868); 26 Aug **New VC Record**. (M Cade).
- 70.221 *Cepphis advenaria* (Hübner, 1790) **LITTLE THORN** Nb
Recorded in: SU00; SU10; SY79; SY88; SY89. SU00/0609 Hedgerow (SU0609); 09 Jun (R Skinner). SY79/MT 0001 Puddletown (SY7695); 17 Jun (H G Wood Homer). SY88/MT 0001 East Lulworth (SY8583); 18 Jun; 6 on 19 Jun; 26 Jun; 03 Jul (L J Hill). SY88/MT 0010 East Lulworth (SY8582); 09 Jun; 19 Jun; 2 on 26 Jun; 2 on 28 Jun; 2 on 09 Jul (L J Hill). SY89/8193 Briantspuddle (SY8193); 12 Jun; 2 on 17 Jun (J D McMillan).
- 70.233 *Ennomos quercinaria* (Hufnagel, 1767) **AUGUST THORN** Local
Recorded in: ST80; SU00; SY39; SY78; SY79; SY88; SZ19. ST80/8304 Winterborne Stickland (ST8304); 20 Jul; 19 Aug (W W Bown). SU00/MT 0008 West Moors (SU0702); 23 Sep (A Bryant). SY39/MT 0001 Charmouth (SY3693); 07 Aug; 19 Aug (G Sell). SY78/7083 Sutton Poyntz (SY7083); 28 Aug (R Oxtoby). SY78/MT 0008 West Stafford (SY7289); 10 Aug, leg. E S Rose (E S Rose, A Rose). SY79/MT 0001 Puddletown (SY7695); 09 Aug (H G Wood Homer). SY88/MT 0004 East Holme (SY8986); 09 Aug; 23 Aug (J H S Cox). SY88/MT 0010 East Lulworth (SY8582); 04 Sep; 2 on 07 Sep; 2 on 08 Sep; 18 Sep (L J Hill).
- 70.236 *Ennomos erosaria* ([Denis & Schiffermüller], 1775) **SEPTEMBER THORN**
Recorded in: ST60; ST61; ST71; SU00; SU10; SU11; SY99. Dorset (SU0506); 11 on 09 Aug (N Hall). Knoll Gardens (SU0600); 3 on 16 Aug (S Buckle). ST60/6108 Leigh, Wesley House (ST6108); 04 Aug; 27 Aug; 2 on 03 Sep; 05 Sep; 24 Sep; 29 Sep (G A Nash). ST61/6610 Ryewater Farm (ST6610); 9 on 09 Aug; 3 on 24 Jul; 73 on 31 Jul; 13 on 13 Aug; 18 Sep; 5 on 09 Aug; 23 on 02 Aug; 2 on 09 Aug (W T Franklin). ST71/7310 Alners Gorse (ST7310); 03 Aug, leg. J Oughton; 6 on 03 Aug, leg. J Oughton; 14 on 03 Aug, leg. J Oughton (J Oughton, N Spring, S Foote). SU00/0609 Hedgerow (SU0609); 7 on 22 Jul; 3 on 25 Jul; 2 on 30 Jul (R Skinner). SU11/MT 0001 Alderholt (SU1112); 4 on 19 Jul; 22 Jul; 3 on 01 Aug; 2 on 16 Aug; 3 on 23 Aug; 3 on 28 Aug; 3 on 04 Sep; 2 on 21 Sep (T Morris). SY99/9992 Pergins Island (SY9992); 08 Aug, leg. R Blake (S Buckle). SY99/9992 Upton Country Park (SY9992); 08 Aug (S Buckle).

- 70.238 *Selenia lunularia* (Hübner, [1788]) **LUNAR THORN** Local
Recorded in: ST60. ST60/6108 Leigh, Wesley House (ST6108); 18 Jun, leg. T A Box; 19 Jun, leg. T A Box (G A Nash).
- 70.262 *Selidosema brunnearia* (Villers, 1789) **BORDERED GREY** Na
Recorded in: SU00; SY88. SU00/0604 Holt Heath (SU0604); field, 14 Aug (M S Parsons). West Lulworth, Bindon Hill (SY8080); field, 04 Sep, leg. D Dennis (D Dennis, M S Warren).
- 70.266 *Alcis jubata* (Thunberg, 1788) **DOTTED CARPET** Local
Recorded in: SU11. SU11/MT 0001 Alderholt (SU1112); 23 Aug (T Morris).
- 70.287 *Charissa obscurata* ([Denis & Schiffermüller], 1775) **ANNULET** Local
Recorded in: SY39; SY67; SZ07. SY39/3693 Charmouth (SY3693); netted, 12 Jul (J Oughton). SY39/MT 0001 Charmouth (SY3693); 18 Aug; 24 Aug (G Sell). SY67/6972 Isle of Portland (SY6972); 3 on 10 Aug (J Oughton). SZ07/0377 Durlston Country Park (SZ0377); 10 Aug, leg. L J Hill (L J Hill, A O J Evans, R Terry).
- 70.306 *Chlorissa viridata* (Linnaeus, 1758) **SMALL GRASS EMERALD** Na
Recorded in: SU00; SY88; SY98; SZ09. Soldiers Road (SY9485); field, 4 on 19 Jun (W Urwin). SU00/0604 Holt Heath (SU0604); field, larval on 24 Jul; field, 2 larval on 14 Aug; field, larval on 14 Aug (M S Parsons). SY88/8087 Winfrith Heath (SY8087); 4 on 28 Jun (D Foot). SZ09/0295 Canford Heath (SZ0295); 16 Jul, leg. V Giavarini (J Francis, M J Lawson, V Giavarini). SZ09/0295 Poole (SZ0295); 16 Jul (L J Hill).
- 71.006 *Furcula bicuspis* (Borkhausen, 1790) **ALDER KITTEN** Local
Recorded in: ST60; SY79. ST60/6108 Leigh, Wesley House (ST6108); 13 Jun (G A Nash). SY79/MT 0001 Puddletown (SY7695); 06 Jun; 07 Jun; 09 Jun (H G Wood Homer).
- 71.023 *Odontosia carmelita* (Esper, [1798]) **SCARCE PROMINENT** Local
Recorded in: SY88. SY88/MT 0001 East Lulworth (SY8583); 08 May (L J Hill). SY88/MT 0010 East Lulworth (SY8582); 15 May (L J Hill).
- 71.028 *Clostera pigra* (Hufnagel, 1766) **SMALL CHOCOLATE-TIP** Nb
Recorded in: SU11; SY88. SU11/MT 0001 Alderholt (SU1112); 22 Jul (T Morris). SY88/MT 0001 East Lulworth (SY8583); 2 on 08 Jul (L J Hill). SY88/MT 0010 East Lulworth (SY8582); 24 Jul (L J Hill).
- 71.029 *Clostera anachoreta* ([Denis & Schiffermüller], 1775) **SCARCE CHOCOLATE-TIP** RDB1
Recorded in: SY68. SY68/MT 0003 Weymouth (SY6784); 10 Aug (P Harris).
- 72.004 *Hypena rostralis* (Linnaeus, 1758) **BUTTONED SNOUT** Nb
Recorded in: ST80; SY89. ST80/8305 Winterborne Stickland (ST8305); lit window, 04 Dec (L de Whalley). SY89/8193 Briantspuddle (SY8193); 19 Jul (J D McMillan).
- 72.006 *Hypena obsitalis* (Hübner, [1813]) **BLOXWORTH SNOUT** RDB3
Recorded in: SY67; SY68. SY67/6676 Weymouth (SY6676); 31 Jul; 01 Aug; 02 Aug; 06 Aug; 2 on 26 Aug; 31 Aug (D Foot). SY67/MT 0006 Weymouth (SY6778); 06 Jun; 18 Jun; 06 Oct; 07 Oct (J Oughton). SY68/MT 0007 Weymouth (SY6982); 04 Sep ('Ricky' Lambert).
- 72.007 *Hypena crassalis* (Fabricius, 1787) **BEAUTIFUL SNOUT** Local
Recorded in: SU11; SY79; SY89. SU11/MT 0001 Alderholt (SU1112); 26 Jun (T Morris). SY79/MT 0001 Puddletown (SY7695); 13 Jul; 17 Jul; 20 Jul; 24 Jul; 31 Jul (H G Wood Homer). SY89/8193 Briantspuddle (SY8193); 13 Jul (J D McMillan).
- 72.009 *Leucoma salicis* (Linnaeus, 1758) **WHITE SATIN** Local
Recorded in: SU11; SY68; SY79; SY89; SY98; SZ19. SU11/MT 0001 Alderholt (SU1112); 22 Jul (T Morris). SY68/MT 0003 Weymouth (SY6784); 13 Jul; 16 Jul; 23 Jul (P Harris). SY79/MT 0001 Puddletown (SY7695); 18 Jul; 19 Jul; 22 Jul; 25 Jul; 26 Jul; 05 Aug (H G Wood Homer). SY89/8193 Briantspuddle (SY8193); 22 Jul (J D McMillan). SY98/9288 Church Knowle (SY9288); 19 Jul (R W Adams).
- 72.016 *Dicallomera fascelina* (Linnaeus, 1758) **DARK TUSSOCK** Local
Recorded in: SY68; SY79; SY89; SZ08; SZ09; SZ19. Spur Heath north (SZ0284); 2 on 17 Jul (J Seawright). Studland, 1st Ridge North (SZ0385); field, larval on 19 Jun (J Seawright). Studland, Shell Bay, The Dunes (SZ0386); field, larval on 13 Jun (J Seawright). SY68/MT 0001 Dorchester (SY6889); 19 Jul (J E Down). SY79/MT 0002 Tolpuddle (SY7994); 19 Jul (J Francis). SY89/8892 Bloxworth Heath (SY8892); 15 Jul, leg. M S Parsons (L J Hill, M S Parsons). SZ08/0384 Studland (SZ0384); 13 Jul (M Jeffes). SZ08/0385 Studland (SZ0385); field, larval on 19 Jun (J Seawright).

SZ08/0386 South Haven Point (SZ0386); field, larval on 13 Jun (J Seawright). SZ09/0295 Canford Heath (SZ0295); 16 Jul, leg. V Giavarini (J Francis, M J Lawson, V Giavarini). SZ09/0295 Poole (SZ0295); 16 Jul (L J Hill).

72.025 *Parasemia plantaginis* (Linnaeus, 1758) **WOOD TIGER** Local

Recorded in: ST60; SY59. Haydon Down (SY5493); field, 7 on 29 Jun (M S Parsons). ST60/6000 Lankham Bottom (ST6000); field, 18 Jun; field, 01 Jul; field, 3 on 01 Jul; field, 06 Jul; field, 26 Jun; field, 4 on 26 Jun (N Spring). ST60/6100 Lankham Bottom (ST6100); field, 10 on 25 Jun; field, larval on 18 May; field, 26 Jun; field, 01 Jul; field, 2 on 26 Jun (M S Parsons). ST60/6601 Cerne Abbas (ST6601); field, 05 Jul; field, 10 Jul (A Butler). ST60/6702 Cerne Abbas (ST6702); field, 4 on 05 Jul; field, 25 Jun (A Butler).

72.034 *Utetheisa pulchella* (Linnaeus, 1758) **CRIMSON SPECKLED** Migrant

Recorded in: SY66; SY67; SZ07. Portland, Suckthumb Quarry (SY6870); field, 02 Oct (S Foote). SY66/6869 Portland Bird Observatory (SY6869); field, 02 Oct (D Levy). SZ07/0377 Durlston Country Park (SZ0377); 2 on 04 Oct, leg. S Breeze; 2 on 04 Oct, leg. S Whitehouse (J Gibbons, S Breeze).

72.039 *Pelosia muscerda* (Hufnagel, 1766) **DOTTED FOOTMAN** RDB3

Recorded in: SY67. SY67/MT 0006 Weymouth (SY6778); 27 Aug (J Oughton).

72.062 *Schranksia taenialis* (Hübner, [1809]) **WHITE-LINE SNOOT** Nb

Recorded in: SY58. SY58/5387 West Bexington (SY5387); 10 Aug (D Foot).

72.072 *Eublemma ostrina* (Hübner, [1808]) **PURPLE MARBLED** Migrant

Recorded in: SU11; SY66. SU11/MT 0001 Alderholt (SU1112); 19 Jun (T Morris). SY66/MT 0001 Portland (SY6868); 21 Sep (M Cade).

72.073 *Eublemma parva* (Hübner, [1808]) **SMALL MARBLED** Migrant

Recorded in: SY49; SY66. SY49/MT 0002 Bothenhampton (SY4892); 08 Oct (M S Parsons). SY66/MT 0001 Portland (SY6868); 07 Oct (M Cade).

72.074 *Eublemma purpurina* ([Denis & Schiffermüller], 1775) **BEAUTIFUL MARBLED** Migrant

Recorded in: SY39; SY88. SY39/MT 0001 Charmouth (SY3693); 2 on 15 Jul; 05 Aug; 26 Aug (G Sell). SY88/MT 0010 East Lulworth (SY8582); 07 Oct (L J Hill).

72.076 *Catocala fraxini* (Linnaeus, 1758) **CLIFDEN NONPAREIL** Migrant

Recorded in: ST80; ST82; SY49; SY68; SY79; SY88; SY89. Motcombe Park, Port Regis School (ST8424); field, 25 Sep (D Lawrence). ST80/8304 Winterborne Stickland (ST8304); 11 Oct (W W Bown). SY49/MT 0002 Bothenhampton (SY4892); 07 Oct (M S Parsons). SY68/MT 0003 Weymouth (SY6784); 26 Sep; 29 Sep; 03 Oct (P Harris). SY79/MT 0001 Puddletown (SY7695); 09 Sep; 12 Sep; 2 on 24 Sep; 26 Sep; 02 Oct; 04 Oct; 05 Oct; 07 Oct; 08 Oct (H G Wood Homer). SY79/MT 0002 Tolpuddle (SY7994); 02 Oct (J Francis). SY88/MT 0001 East Lulworth (SY8583); 12 Sep; 23 Sep (L J Hill). SY88/MT 0010 East Lulworth (SY8582); 10 Sep (L J Hill). SY89/8193 Briantspuddle (SY8193); 12 Sep; 14 Sep; 24 Sep; 29 Sep; 02 Oct; 04 Oct (J D McMillan).

72.079 *Catocala electa* (Vieweg, 1790) **ROSY UNDERWING** Vagrant/Accidental

Recorded in: SY88. SY88/MT 0001 East Lulworth (SY8583); 12 Sep; 17 Oct (L J Hill). SY88/MT 0010 East Lulworth (SY8582); 09 Sep (L J Hill).

73.008 *Chrysodeixis chalcites* (Esper, [1803]) **GOLDEN TWIN-SPOT** Migrant

Recorded in: SY67. SY67/6676 Weymouth (SY6676); 30 Aug (D Foot).

73.010 *Macdunnoughia confusa* (Stephens, 1850) **DEWICK'S PLUSIA** Rare migrant

Recorded in: SU11; SY66; SY79. SU11/MT 0001 Alderholt (SU1112); 26 Jul (T Morris). SY66/MT 0001 Portland (SY6868); 25 Sep; 07 Oct; 17 Oct; 25 Oct (M Cade). SY79/MT 0001 Puddletown (SY7695); 17 Oct (H G Wood Homer).

73.026 *Deltote uncula* (Clerck, 1759) **SILVER HOOK** Local

Recorded in: SZ08. SZ08/0385 Studland (SZ0385); 06 Jul; netted, 2 on 19 Jun (J C Winterbottom).

73.031 *Tyta luctuosa* ([Denis & Schiffermüller], 1775) **FOUR-SPOTTED** Na

Recorded in: SY67. SY67/6870 Isle of Portland (SY6870); 10 Jul (D Saunders).

- 73.033 *Diloba caeruleocephala* (Linnaeus, 1758) **FIGURE OF EIGHT**
Recorded in: ST80. ST80/8304 Winterborne Stickland (ST8304); 23 Oct (W W Bown).
- 73.034 *Moma alpium* (Osbeck, 1778) **SCARCE MERVEILLE DU JOUR RDB3**
Recorded in: SU11. SU11/MT 0001 Alderholt (SU1112); 03 Jul; 22 Jul (T Morris).
- 73.038 *Acronicta psi* (Linnaeus, 1758) **GREY DAGGER**
Recorded in: ST80; SU00; SU10; SY68; SY98; SY99; SZ07; SZ08; SZ19. Corfe Hills, Broadstone (SY9996); field, larval on 12 Sep (J Seawright). ST80/8304 Winterborne Stickland (ST8304); field, larval on 07 Nov (W W Bown). SU00/01 Holt and West Moors Heaths (SU0503); field, larval on 02 Sep (M S Parsons). SY68/6881 Lodmoor (SY6881); field, larval on 03 Aug (J Hunnisett). SY68/MT 0002 Chickerell (SY6580); field, larval on 09 Oct (C Pinder). SY98/9288 Church Knowle (SY9288); field, larval on 07 Aug; field, larval on 26 Aug (R W Adams). SZ07/0377 Durlston Country Park (SZ0377); male on 09 Aug, gen. det. (L J Hill, A O J Evans, R Terry). SZ08/0383 Studland (SZ0383); field, larval on 01 Oct (J Seawright).
- 73.050 *Cucullia absinthii* (Linnaeus, 1761) **WORMWOOD Nb**
Recorded in: SY67. SY67/6870 Isle of Portland (SY6870); 13 Aug (D Saunders).
- 73.061 *Stilbia anomala* (Haworth, 1812) **ANOMALOUS Local**
Recorded in: SY79; SY88; SY89; SZ09; SZ19. SY79/MT 0001 Puddletown (SY7695); 01 Sep; 08 Sep; 16 Sep (H G Wood Homer). SY88/MT 0010 East Lulworth (SY8582); 09 Sep; 10 Sep (L J Hill). SY89/8193 Briantspuddle (SY8193); 30 Aug (J D McMillan). Wallisdown, Benbow Crescent (SZ0594); 18 Sep (S Buckle).
- 73.064 *Amphipyra tragopoginis* (Clerck, 1759) **MOUSE MOTH**
Recorded in: ST40; ST60; ST80; ST90; SY49; SY68; SY78; SY79; SY89; SZ09. Broadmayne, Spring Gardens (SY7387); 10 Aug; 22 Aug; 28 Aug (P Bruce-Jones). Merley, Sopwith Crescent (SZ0298); 23 Jul, leg. R W Steedman (R W Steedman, B Steedman). ST40/MT 0001 Beaminster (ST4701); 26 Aug (S Philp). ST60/6108 Leigh, Wesley House (ST6108); 23 Aug; 24 Aug (G A Nash). ST80/8304 Winterborne Stickland (ST8304); 01 Aug; 3 on 08 Aug; 2 on 09 Aug; 2 on 10 Aug; 14 Aug; 16 Aug; 3 on 18 Aug; 25 Aug; 26 Aug; 3 on 28 Aug; 2 on 29 Aug; 4 on 30 Aug; 2 on 01 Sep; 02 Sep; 2 on 09 Sep; 2 on 12 Sep; 13 Sep; 2 on 14 Sep; 17 Sep; 19 Sep; 22 Sep; 24 Sep; 01 Oct; 02 Oct (W W Bown). ST80/8305 Winterborne Stickland (ST8305); 23 Aug; 3 on 30 Aug (L de Whalley). ST90/9602 Badbury Rings (ST9602); 8 on 14 Aug; 14 Aug; 5 on 29 Aug (V Giavarini). SY49/MT 0002 Bothenhampton (SY4892); 23 Aug (M S Parsons). SY68/MT 0003 Weymouth (SY6784); 15 Aug; 03 Sep (P Harris). SY79/MT 0001 Puddletown (SY7695); 17 Jul; 01 Aug; 2 on 05 Aug; 2 on 06 Aug; 09 Aug; 11 Aug; 15 Aug; 2 on 18 Aug; 19 Aug; 2 on 21 Aug; 2 on 22 Aug; 5 on 23 Aug; 2 on 25 Aug; 2 on 26 Aug; 27 Aug; 2 on 29 Aug; 01 Sep; 04 Sep; 09 Sep; 17 Sep; 19 Sep; 24 Sep (H G Wood Homer). SY79/MT 0002 Tolpuddle (SY7994); 01 Aug; 12 Sep (J Francis). SY89/8193 Briantspuddle (SY8193); 16 Aug; 19 Aug; 20 Aug; 21 Aug; 25 Aug; 30 Aug; 05 Sep (J D McMillan).
- 73.065 *Asteroscopus sphinx* (Hufnagel, 1766) **SPRAWLER**
Recorded in: ST60; ST61; SY88. ST60/6108 Leigh, Wesley House (ST6108); 11 Nov (G A Nash). ST61/6610 Ryewater Farm (ST6610); 2 on 24 Oct; 7 on 08 Nov (W T Franklin). SY88/MT 0010 East Lulworth (SY8582); 30 Oct (L J Hill).
- 73.070 *Pyrrhia umbra* (Hufnagel, 1766) **BORDERED SALLOW Local**
Recorded in: SU11; SY39; SY66; SY67; SY68; SY79; SZ07. SU11/MT 0001 Alderholt (SU1112); 19 Jul (T Morris). SY39/MT 0001 Charmouth (SY3693); 17 Jun; 18 Jun; 2 on 20 Jun; 3 on 28 Jun; 30 Jun; 03 Jul; 10 Jul; 12 Jul; 20 Jul; 22 Jul; 3 on 24 Jul (G Sell). SY66/MT 0001 Portland (SY6868); 10 Jun (M Cade). SY67/6870 Isle of Portland (SY6870); 2 on 13 Jul; 14 Jul; 21 Jul (D Saunders). SY67/6972 Isle of Portland (SY6972); 10 Aug (J Oughton). SY67/MT 0006 Weymouth (SY6778); 2 on 13 Jul; 15 Jul (J Oughton). SY68/MT 0003 Weymouth (SY6784); 30 Jun; 15 Jul (P Harris). SY79/MT 0001 Puddletown (SY7695); 17 Jul (H G Wood Homer). SY79/MT 0002 Tolpuddle (SY7994); 4 on 02 Oct (J Francis). SZ07/0377 Durlston Country Park (SZ0377); 09 Jul, leg. S Breeze; 2 on 13 Jul, leg. S Breeze; 5 on 21 Jul, leg. S Breeze; 24 Jul, leg. S Breeze; 26 Jul, leg. S Breeze (J Gibbons, S Breeze). SZ07/MT 0002 Swanage (SZ0278); 04 Jun; 2 on 19 Jun; 24 Jun; 26 Jun; 3 on 30 Jun; 03 Jul; 3 on 05 Jul; 3 on 06 Jul; 3 on 11 Jul; 13 Jul; 4 on 13 Jul; 7 on 15 Jul; 10 on 17 Jul; 22 Jul; 23 Aug (P England).
- 73.073 *Heliothis maritima* Graslin, 1855 **SHOULDER-STRIPED CLOVER RDB3**
Recorded in: SU00. SU00/0604 Holt Heath (SU0604); field, larval on 14 Aug (M S Parsons).
- 73.074 *Heliothis peltigera* ([Denis & Schiffermüller], 1775) **BORDERED STRAW Migrant**
Recorded in: SY49; SY66; SY67; SY79. SY49/MT 0002 Bothenhampton (SY4892); 17 Jun (M S Parsons). SY66/MT 0001 Portland (SY6868); 2 on 13 Aug (M Cade). SY67/6870 Isle of Portland (SY6870); 07 Jul; 09 Jul (D Saunders). SY79/MT 0001 Puddletown (SY7695); 30 Aug (H G Wood Homer).

- 73.082 *Cryphia algae* (Fabricius, 1775) **TREE-LICHEN BEAUTY** Rare migrant
Recorded in: SY67; SZ07. SY67/6676 Weymouth (SY6676); 2 on 23 Aug (D Foot). SZ07/MT 0002 Swanage (SZ0278); 23 Aug (P England).
- 73.086 *Pseudeustrotia candidula* ([Denis & Schiffermüller], 1775) **SHINING MARBLED** Vagrant/Accidental
Recorded in: SY66. SY66/MT 0001 Portland (SY6868); 25 Aug (M Cade).
- 73.087 *Spodoptera exigua* (Hübner, [1808]) **SMALL MOTTLED WILLOW** Migrant
Recorded in: ST80; SY49; SY66; SY79. ST80/8304 Winterborne Stickland (ST8304); 25 Jul (W W Bown). SY49/MT 0002 Bothenhampton (SY4892); 07 Oct (M S Parsons). SY66/MT 0001 Portland (SY6868); 04 Jan; 18 Jun; 03 Aug (M Cade). SY79/MT 0001 Puddletown (SY7695); 02 Jan; 2 on 14 Aug; 15 Aug (H G Wood Homer).
- 73.091 *Elaphria venustula* (Hübner, 1790) **ROSY MARBLED** Nb
Recorded in: SU10; SU11; SZ19. SU11/MT 0001 Alderholt (SU1112); 13 Jul (T Morris).
- 73.093 *Caradrina kadenii* (Freyer, [1836]) **CLANCY'S RUSTIC** Migrant
Recorded in: SY49; SY66; SY67; SY68; SY79; SY88; SY99. Lytchett Bay, Lytchett Way (SY9792); 07 Oct (N J Hull). SY49/MT 0002 Bothenhampton (SY4892); 26 Oct (M S Parsons). SY66/MT 0001 Portland (SY6868); 21 Oct; 23 Oct (M Cade). SY67/6676 Weymouth (SY6676); 04 Oct (D Foot). SY67/6870 Isle of Portland (SY6870); 30 Sep; 23 Oct (D Saunders). SY67/MT 0002 Weymouth (SY6676); 04 Oct (D Foot). SY67/MT 0006 Weymouth (SY6778); 2 on 23 Oct (J Oughton). SY68/MT 0002 Chickerell (SY6580); 01 Oct; 22 Oct (C Pinder). SY68/MT 0003 Weymouth (SY6784); 01 Oct; 3 on 07 Oct; 25 Oct (P Harris). SY79/MT 0001 Puddletown (SY7695); 25 Oct (H G Wood Homer). SY88/MT 0010 East Lulworth (SY8582); 07 Oct; 2 males on 01 Jul, gen. det. (L J Hill).
- 73.100 *Chilodes maritima* (Tauscher, 1806) **SILKY WAINSCOT** Local
Recorded in: SY67; SY68; SY79; SY89; SY99; SZ08; SZ19. Lytchett Bay, Lytchett Way (SY9792); 29 Jun; 30 Jun; 5 on 13 Jul (N J Hull). Spur Heath north (SZ0284); 17 Jul, leg. M Jeffes (J Seawright). SY67/6870 Isle of Portland (SY6870); 14 Jul; 16 Jul; 17 Jul (D Saunders). SY67/MT 0006 Weymouth (SY6778); 14 Jul (J Oughton). SY68/MT 0003 Weymouth (SY6784); 07 Jul (P Harris). SY79/MT 0001 Puddletown (SY7695); 17 Jul (H G Wood Homer). SY79/MT 0002 Tolpuddle (SY7994); 13 Jul (J Francis). SY89/8193 Briantspuddle (SY8193); 13 Jul (J D McMillan).
- 73.104 *Athetis hospes* (Freyer, [1831]) **PORTER'S RUSTIC** Vagrant/Accidental
Recorded in: SY88. SY88/MT 0001 East Lulworth (SY8583); 08 Oct (L J Hill).
- 73.119 *Helotropha leucostigma* (Hübner, [1808]) **CRESCENT** Local
Recorded in: SY67; SY68; SY78. SY67/6676 Weymouth (SY6676); 04 Sep (D Foot). SY67/MT 0002 Weymouth (SY6676); 04 Sep (D Foot). SY67/MT 0006 Weymouth (SY6778); 23 Aug; 25 Aug; 26 Aug (J Oughton). SY68/MT 0003 Weymouth (SY6784); 04 Aug; 21 Aug; 11 Sep (P Harris). SY78/MT 0008 West Stafford (SY7289); 17 Aug, leg. E S Rose (E S Rose, A Rose).
- 73.128 *Amphipoea oculea* (Linnaeus, 1761) **EAR MOTH**
Recorded in: SY79; SZ19. SY79/MT 0002 Tolpuddle (SY7994); male on 30 Jul, gen. det.; male on 31 Jul, gen. det.; 2 males on 01 Aug, gen. det. (J Francis).
- 73.135 *Sedina buettneri* (Hering, 1858) **BLAIR'S WAINSCOT** RDB1
Recorded in: SY68; SY88. SY68/MT 0001 Dorchester (SY6889); 02 Oct, leg. P H Sterling (J E Down). SY88/MT 0010 East Lulworth (SY8582); 08 Oct (L J Hill).
- 73.137 *Arenostola phragmitidis* (Hübner, [1803]) **FEN WAINSCOT** Local
Recorded in: SY67; SY68; SY79. SY67/6676 Weymouth (SY6676); 25 Aug (D Foot). SY67/MT 0002 Weymouth (SY6676); 25 Aug (D Foot). SY68/MT 0003 Weymouth (SY6784); 31 Jul; 08 Aug (P Harris). SY79/MT 0001 Puddletown (SY7695); 24 Jul (H G Wood Homer).
- 73.145 *Photodes fluxa* (Hübner, [1809]) **MERE WAINSCOT** Nb
Recorded in: ST60; ST71; SY79. ST60/6108 Leigh, Wesley House (ST6108); 30 Jul, leg. T A Box (G A Nash). ST71/7310 Alners Gorse (ST7310); 03 Aug, leg. J Oughton (J Oughton, N Spring, S Foote). SY79/MT 0001 Puddletown (SY7695); 13 Jul (H G Wood Homer).
- 73.148 *Photodes morrisii* (Dale, 1837) **MORRIS'S WAINSCOT** RDB1
Recorded in: SY39. SY39/3693 Charmouth (SY3693); netted, 11 on 12 Jul (J Oughton). SY39/MT 0001 Charmouth (SY3693); 20 Jul (G Sell).

- 73.151 *Globia sparganii* (Esper, 1789) **WEBB'S WAINSCOT** Nb
Recorded in: ST90; SY67; SY68; SY69; SY79. ST90/9900 Cowgrove (ST9900); 15 Aug (M Jeffes). SY67/6676 Weymouth (SY6676); 26 Aug (D Foot). SY67/MT 0002 Weymouth (SY6676); 26 Aug (D Foot). SY68/MT 0003 Weymouth (SY6784); 30 Jul; 25 Sep (P Harris). SY68/MT 0007 Weymouth (SY6982); 29 Jul ('Ricky' Lambert). SY69/6695 Forston (SY6695); 16 Jul, leg. C Forrest (C Forrest, C Thackwray). SY79/MT 0001 Puddletown (SY7695); 10 Aug (H G Wood Homer).
- 73.164 *Apamea sublustris* (Esper, 1788) **REDDISH LIGHT ARCHES** Local
Recorded in: SZ07. SZ07/0377 Durlston Country Park (SZ0377); 4 on 29 Jun, leg. S Breeze; 17 on 09 Jul, leg. S Breeze; 28 on 13 Jul, leg. S Breeze; 21 Jul, leg. S Breeze (J Gibbons, S Breeze). SZ07/MT 0002 Swanage (SZ0278); 3 on 06 Jul; 08 Jul; 5 on 09 Jul; 11 Jul; 2 on 13 Jul; 2 on 15 Jul; 17 Jul (P England).
- 73.169 *Mesapamea secalis* (Linnaeus, 1758) **COMMON RUSTIC**
Recorded in: SU10; SY98; SZ19. Middlebere (SY9685); female on 29 Aug, gen. det.; 26 Aug, gen. det.; female on 29 Aug, gen. det.; 26 Aug, gen. det. (M C Harvey).
- 73.173 *Oligia strigilis* (Linnaeus, 1758) **MARBLED MINOR**
Recorded in: SY88. SY88/MT 0010 East Lulworth (SY8582); male on 28 Jun, gen. det. (L J Hill).
- 73.178 *Leucochlaena oditis* (Hübner, [1822]) **BEAUTIFUL GOTHIC** RDB3
Recorded in: SY67; SZ07. SY67/6870 Isle of Portland (SY6870); 2 on 29 Sep; 06 Oct; 07 Oct; 12 Oct; 13 Oct; 14 Oct; 15 Oct; 19 Oct (D Saunders). SY67/6970 Isle of Portland (SY6970); 4 on 09 Oct (J Knowler). SY67/MT 0005 Portland (SY6871); 12 on 21 Sep; 4 on 25 Sep (J Williamson). SZ07/0377 Durlston Country Park (SZ0377); 5 on 04 Oct, leg. S Breeze; 5 on 08 Oct, leg. S Breeze; 23 Sep; 5 on 04 Oct, leg. S Whitehouse; 22 Sep; 2 on 21 Sep (J Gibbons, S Breeze).
- 73.183 *Cirrhia gilvago* ([Denis & Schiffermüller], 1775) **DUSKY-LEMON SALLOW** Local
Recorded in: SU11; SY66; SY79; SZ07; SZ19. SU11/MT 0001 Alderholt (SU1112); 01 Oct (T Morris). SY66/MT 0001 Portland (SY6868); 24 Oct (M Cade). SY79/MT 0001 Puddletown (SY7695); 24 Sep (H G Wood Homer). SZ07/0377 Durlston Country Park (SZ0377); 03 Oct, leg. J Gibbons (J Gibbons, S Breeze).
- 73.188 *Agrochola helvola* (Linnaeus, 1758) **FLOUNCED CHESTNUT**
Recorded in: SY39; SZ07. Hawkchurch (SY3499); 03 Oct (P Darch). Langton Matravers, Blackers Hole (SZ0077); 2 on 16 Oct (B Coleman). SY39/MT 0001 Charmouth (SY3693); 03 Oct (G Sell). SZ07/MT 0002 Swanage (SZ0278); 23 Oct (P England).
- 73.197 *Conistra rubiginea* ([Denis & Schiffermüller], 1775) **DOTTED CHESTNUT** Nb
Recorded in: SY49; SY79; SY88; SY98. Norden, Louern (SY9483); 12 Apr (J White). SY49/MT 0002 Bothenhampton (SY4892); 06 Mar; 08 Mar (M S Parsons). SY79/MT 0001 Puddletown (SY7695); 08 Mar; 11 Apr; 2 on 23 Apr (H G Wood Homer). SY88/MT 0010 East Lulworth (SY8582); 15 Apr (L J Hill).
- 73.200 *Lithophane semibrunnea* (Haworth, 1809) **TAWNY PINION** Local
Recorded in: SY66; SY79; SZ09. SY66/MT 0001 Portland (SY6868); 05 Nov (M Cade). SY79/MT 0001 Puddletown (SY7695); 06 May (H G Wood Homer). SZ09/MT 0012 Poole (SZ0095); 16 Nov (A H Bicker).
- 73.213 *Ipimorpha subtusa* ([Denis & Schiffermüller], 1775) **OLIVE** Local
Recorded in: ST71; SY58; SY99. ST71/7310 Alners Gorse (ST7310); 2 on 03 Aug, leg. J Oughton (J Oughton, N Spring, S Foote). SY58/5387 West Bexington (SY5387); 2 on 14 Aug (D Foot). SY58/MT 0004 Puncknowle (SY5387); 2 on 14 Aug (D Foot). SY99/9992 Pergins Island (SY9992); 08 Aug, leg. V Giavarini (S Buckle). SY99/9992 Upton Country Park (SY9992); 08 Aug (S Buckle).
- 73.223 *Dryobota labecula* (Esper, 1788) **OAK RUSTIC** Rare migrant
Recorded in: SY68; SZ07. SY68/MT 0003 Weymouth (SY6784); 18 Oct (P Harris). SY68/MT 0007 Weymouth (SY6982); 16 Nov ('Ricky' Lambert). SZ07/MT 0002 Swanage (SZ0278); 16 Oct; 22 Oct; 2 on 23 Oct; 25 Oct; 2 on 03 Nov; 3 on 11 Nov; 16 Nov; 27 Nov (P England).
- 73.227 *Dryobotodes tenebrosa* (Esper, 1789) **SOMBRE BROCADE** Migrant
Recorded in: SZ07. SZ07/0377 Durlston Country Park (SZ0377); 2 on 04 Oct, leg. S Breeze; 2 on 08 Oct, leg. S Breeze; 3 on 15 Oct, leg. S Breeze; 23 Sep; 04 Oct, leg. S Whitehouse (J Gibbons, S Breeze).
- 73.229 *Trigonophora flammea* (Esper, 1785) **FLAME BROCADE** Migrant
Recorded in: SY39; SY66; SY67; SZ07. Langton Matravers, Blackers Hole (SZ0077); 16 Oct; 17 Oct (B Coleman). SY39/MT 0001 Charmouth (SY3693); 23 Oct (G Sell). SY66/MT 0001 Portland (SY6868); 06 Oct; 2 on 12 Oct; 13 Oct;

21 Oct (M Cade). SY67/6870 Isle of Portland (SY6870); 09 Oct; 12 Oct; 13 Oct; 15 Oct; 19 Oct; 23 Oct (D Saunders). SY67/6970 Isle of Portland (SY6970); 22 on 09 Oct (J Knowler). SY67/MT 0006 Weymouth (SY6778); 23 Oct (J Oughton). SZ07/0377 Durlston Country Park (SZ0377); 08 Oct, leg. S Breeze (J Gibbons, S Breeze).

73.230 *Aporophyla australis* (Boisduval, 1829) **FEATHERED BRINDLE** Nb

Recorded in: SY49; SY58; SY67; SY68; SY79; SY88; SZ07. Langton Matravers, Blackers Hole (SZ0077); 16 on 16 Oct; 35 on 17 Oct (B Coleman). SY49/MT 0002 Bothenhampton (SY4892); 21 Sep (M S Parsons). SY58/5388 Puncknowle (SY5388); 30 Sep (M Hetherington). SY67/6870 Isle of Portland (SY6870); 12 on 29 Sep; 9 on 30 Sep; 7 on 01 Oct; 02 Oct; 4 on 03 Oct; 2 on 04 Oct; 7 on 05 Oct; 3 on 06 Oct; 09 Oct; 10 Oct; 12 Oct (D Saunders). SY67/MT 0005 Portland (SY6871); 14 Sep; 8 on 21 Sep; 11 on 25 Sep (J Williamson). SY67/MT 0006 Weymouth (SY6778); 25 Sep; 2 on 26 Sep; 02 Oct (J Oughton). SY68/MT 0003 Weymouth (SY6784); 08 Oct (P Harris). SY79/MT 0002 Tolpuddle (SY7994); 02 Oct (J Francis). SY88/MT 0001 East Lulworth (SY8583); 25 Sep; 07 Oct (L J Hill). SZ07/0377 Durlston Country Park (SZ0377); 5 on 20 Sep, leg. S Breeze; 11 on 21 Sep, leg. S Breeze; 24 Sep, leg. S Breeze; 29 Sep, leg. S Breeze; 9 on 02 Oct, leg. S Breeze; 03 Oct, leg. S Breeze; 2 on 04 Oct, leg. S Breeze; 5 on 08 Oct, leg. S Breeze; 8 on 23 Sep; 3 on 22 Sep; 22 Sep; 7 on 22 Sep; 2 on 22 Sep; 5 on 04 Oct, leg. S Whitehouse; 6 on 21 Sep; 4 on 20 Oct (J Gibbons, S Breeze). SZ07/MT 0002 Swanage (SZ0278); 2 on 18 Sep; 3 on 20 Sep; 16 on 28 Sep; 15 on 29 Sep; 3 on 01 Oct; 6 on 02 Oct; 2 on 03 Oct; 2 on 04 Oct; 5 on 05 Oct; 3 on 06 Oct; 07 Oct; 08 Oct (P England).

73.231 *Aporophyla lutulenta* ([Denis & Schiffermüller], 1775) **DEEP-BROWN DART**

Recorded in: SY88; SZ09. SY88/MT 0001 East Lulworth (SY8583); 25 Sep (L J Hill). SZ09/MT 0012 Poole (SZ0095); 29 Sep (A H Bicker).

73.234 *Dasypolia templi* (Thunberg, 1792) **BRINDLED OCHRE** Local

Recorded in: SY68; SZ07. SY68/MT 0002 Chickerell (SY6580); 07 Oct (C Pinder). SZ07/0377 Durlston Country Park (SZ0377); 08 Oct, leg. S Breeze; 3 on 04 Oct, leg. S Whitehouse (J Gibbons, S Breeze).

73.237 *Polymixis flavicincta* ([Denis & Schiffermüller], 1775) **LARGE RANUNCULUS** Local

Recorded in: ST40; ST60; SY39; SY49; SY58; SY67. ST40/MT 0001 Beaminster (ST4701); 22 Sep; 2 on 25 Sep; 2 on 30 Sep (S Philp). ST60/6108 Leigh, Wesley House (ST6108); 19 Sep; 2 on 22 Sep; 4 on 24 Sep; 25 Sep; 5 on 26 Sep; 5 on 30 Sep; 2 on 02 Oct (G A Nash). SY39/MT 0001 Charmouth (SY3693); 21 Sep; 22 Sep; 23 Sep; 25 Sep; 30 Sep (G Sell). SY49/MT 0002 Bothenhampton (SY4892); 12 Sep; 15 Sep (M S Parsons). SY58/5388 Puncknowle (SY5388); 14 Sep; 20 Sep; 3 on 30 Sep (M Hetherington). SY67/6870 Isle of Portland (SY6870); 29 Sep; 05 Oct; 06 Oct; 11 Oct (D Saunders).

73.243 *Orthosia miniosa* ([Denis & Schiffermüller], 1775) **BLOSSOM UNDERWING** Local

Recorded in: ST80. ST80/8305 Winterborne Stickland (ST8305); 04 May (L de Whalley).

73.255 *Anarta trifolii* (Hufnagel, 1766) **NUTMEG**

Recorded in: ST61; SY58; SY67; SY68; SY78; SY79; SY98; SZ19. Broadmayne, Spring Gardens (SY7387); 03 Aug; 14 Aug (P Bruce-Jones). ST61/6610 Ryewater Farm (ST6610); 24 Jul; 4 on 02 Aug (W T Franklin). SY58/5387 West Bexington (SY5387); 10 Aug (D Foot). SY58/MT 0004 Puncknowle (SY5387); 10 Aug (D Foot). SY67/6676 Weymouth (SY6676); 02 Aug; 04 Aug; 19 Aug; 2 on 26 Aug; 2 on 27 Aug (D Foot). SY67/MT 0002 Weymouth (SY6676); 02 Aug; 04 Aug; 19 Aug; 2 on 26 Aug; 2 on 27 Aug (D Foot). SY67/MT 0006 Weymouth (SY6778); 11 Jul; 11 Aug; 3 on 21 Aug; 25 Aug; 27 Aug; 28 Aug (J Oughton). SY68/MT 0002 Chickerell (SY6580); 04 Aug (C Pinder). SY79/MT 0001 Puddletown (SY7695); 20 May; 25 Jul; 2 on 31 Jul; 06 Aug; 16 Aug (H G Wood Homer). SY98/9288 Church Knowle (SY9288); 01 Aug (R W Adams).

73.265 *Lacanobia contigua* ([Denis & Schiffermüller], 1775) **BEAUTIFUL BROCADE** Local

Recorded in: SY89; SY99; SZ09; SZ19. SY89/8892 Bloxworth Heath (SY8892); 15 Jul, leg. M S Parsons (L J Hill, M S Parsons). SY99/9794 Beacon Hill (SY9794); 27 Jun (A Baker). SZ09/0295 Canford Heath (SZ0295); 16 Jul, leg. V Giavarini (J Francis, M J Lawson, V Giavarini). SZ09/0295 Poole (SZ0295); 16 Jul (L J Hill). SZ09/MT 0012 Poole (SZ0095); 13 Jul (A H Bicker).

73.266 *Lacanobia suasa* ([Denis & Schiffermüller], 1775) **DOG'S TOOTH** Local

Recorded in: SY67; SY68. SY67/6676 Weymouth (SY6676); 05 Aug (D Foot). SY67/MT 0006 Weymouth (SY6778); 28 Aug (J Oughton). SY68/MT 0003 Weymouth (SY6784); 07 Jul; 06 Aug; 09 Aug (P Harris).

73.282 *Hadena compta* ([Denis & Schiffermüller], 1775) **VARIED CORONET**

Recorded in: ST80. ST80/8304 Winterborne Stickland (ST8304); 29 Jun (W W Bown).

73.286 *Hadena perplexa* ([Denis & Schiffermüller], 1775) **TAWNY SHEARS**

Recorded in: ST70; SY49; SY67; SZ07. ST70/MT 0003 Higher Ansty (ST7603); 2 on 10 Aug (M S Warren). SY49/MT 0002 Bothenhampton (SY4892); 23 Jul; 29 Jul (M S Parsons). SY67/6676 Weymouth (SY6676); 13 Jul; 16 Jul (D Foot).

SY67/6870 Isle of Portland (SY6870); 13 Aug (D Saunders). SY67/MT 0002 Weymouth (SY6676); 13 Jul; 16 Jul (D Foot). SZ07/MT 0002 Swanage (SZ0278); 01 Aug (P England).

73.288 *Mythimna turca* (Linnaeus, 1761) **DOUBLE LINE** Nb

Recorded in: ST61; SY39; SY67; SY69; SY79; SY88. Hawkchurch (SY3499); 14 Jul (P Darch). ST61/6610 Ryewater Farm (ST6610); 24 Jul (W T Franklin). SY67/6676 Weymouth (SY6676); 17 Jul (D Foot). SY67/MT 0002 Weymouth (SY6676); 17 Jul (D Foot). SY69/6695 Forston (SY6695); 5 on 16 Jul, leg. C Forrest (C Forrest, C Thackwray). SY79/MT 0001 Puddletown (SY7695); 28 Jun; 11 Jul (H G Wood Homer). SY88/MT 0010 East Lulworth (SY8582); 28 Jun (L J Hill).

73.290 *Mythimna conigera* ([Denis & Schiffermüller], 1775) **BROWN-LINE BRIGHT-EYE**

Recorded in: ST60; ST70; SY66; SY67; SY78; SY79; SZ07; SZ09; SZ19. Dorset (SZ0291); 08 Aug (V Giavarini). ST60/6108 Leigh, Wesley House (ST6108); 18 May (G A Nash). ST70/MT 0003 Higher Ansty (ST7603); 2 on 25 Jun; 2 on 11 Jul; 2 on 20 Jul; 01 Aug (M S Warren). SY67/6676 Weymouth (SY6676); 21 Jul (D Foot). SY67/6870 Isle of Portland (SY6870); 2 on 10 Jul; 6 on 13 Jul; 2 on 16 Jul; 4 on 17 Jul; 5 on 19 Jul; 3 on 20 Jul; 4 on 22 Jul; 2 on 23 Jul; 4 on 24 Jul; 3 on 25 Jul; 12 on 26 Jul; 2 on 27 Jul; 29 Jul; 01 Aug; 03 Aug; 6 on 07 Aug; 08 Aug; 3 on 09 Aug; 7 on 10 Aug; 4 on 11 Aug; 3 on 12 Aug; 6 on 13 Aug; 2 on 16 Aug; 19 Aug; 21 Aug (D Saunders). SY67/6972 Isle of Portland (SY6972); 6 on 10 Aug; 9 on 10 Aug (J Oughton). SY67/MT 0002 Weymouth (SY6676); 21 Jul (D Foot). SY67/MT 0005 Portland (SY6871); 4 on 18 Jul; 2 on 26 Jul; 10 Aug (J Williamson). SY78/7083 Weymouth (SY7083); 25 Jul; 19 Aug (J Campbell). SY79/MT 0002 Tolpuddle (SY7994); 4 on 19 Jun; 9 on 08 Jul; 4 on 18 Jul; 20 on 21 Jul; 06 Aug (J Francis). SZ07/0377 Durlston Country Park (SZ0377); 3 on 21 Jul, leg. S Breeze (J Gibbons, S Breeze).

73.291 *Mythimna favicolor* (Barrett, 1896) **MATHEW'S WAINSCOT** Nb

Recorded in: SY79. SY79/MT 0001 Puddletown (SY7695); 02 Sep (H G Wood Homer).

73.295 *Mythimna vitellina* (Hübner, [1808]) **DELICATE** Migrant

Recorded in: ST80; SY39; SY49; SY66; SY67; SY68; SY79; SZ07. ST80/8304 Winterborne Stickland (ST8304); 04 Oct; 2 on 07 Oct; 18 Oct; 22 Oct (W W Bown). SY39/MT 0001 Charmouth (SY3693); 08 Oct (G Sell). SY49/MT 0002 Bothenhampton (SY4892); 02 Oct; 03 Oct; 04 Oct; 05 Oct (M S Parsons). SY66/MT 0001 Portland (SY6868); 3 on 03 Oct; 11 on 04 Oct; 8 on 05 Oct; 10 on 06 Oct; 8 on 07 Oct; 2 on 12 Oct; 3 on 13 Oct; 14 Oct; 2 on 23 Oct; 24 Oct; 29 Oct; 01 Nov; 27 Nov (M Cade). SY67/6676 Weymouth (SY6676); 08 Oct (D Foot). SY67/6870 Isle of Portland (SY6870); 04 Oct; 08 Oct; 09 Oct; 11 Oct; 2 on 12 Oct; 13 Oct; 15 Oct; 27 Nov (D Saunders). SY67/6970 Isle of Portland (SY6970); 09 Oct (J Knowler). SY67/MT 0002 Weymouth (SY6676); 08 Oct (D Foot). SY68/MT 0002 Chickerell (SY6580); 07 Oct; 08 Oct (C Pinder). SY68/MT 0003 Weymouth (SY6784); 18 Oct (P Harris). SY79/MT 0001 Puddletown (SY7695); 04 Oct; 25 Oct; 28 Oct; 30 Oct; 2 on 01 Nov (H G Wood Homer). SZ07/0377 Durlston Country Park (SZ0377); 7 on 03 Oct, leg. S Breeze; 14 on 04 Oct, leg. S Breeze; 14 on 04 Oct, leg. S Whitehouse (J Gibbons, S Breeze). SZ07/MT 0002 Swanage (SZ0278); 03 Oct; 3 on 04 Oct; 06 Oct; 07 Oct; 2 on 08 Oct; 12 Oct (P England).

73.296 *Mythimna unipuncta* (Haworth, 1809) **WHITE-SPECK** Migrant

Recorded in: SY49; SY66; SY67; SY68. SY49/MT 0002 Bothenhampton (SY4892); 05 Oct (M S Parsons). SY66/MT 0001 Portland (SY6868); 02 Jul; 06 Oct; 07 Oct; 14 Oct; 23 Oct; 12 Nov (M Cade). SY67/6870 Isle of Portland (SY6870); 08 Oct (D Saunders). SY68/MT 0003 Weymouth (SY6784); 08 Oct (P Harris).

73.299 *Mythimna litoralis* (Curtis, 1827) **SHORE WAINSCOT** Nb

Recorded in: SY39; SZ08. SY39/MT 0001 Charmouth (SY3693); 25 Jul; 26 Jul (G Sell). SZ08/0384 Studland (SZ0384); 4 on 13 Jul (M Jeffes). SZ08/0385 Studland (SZ0385); 7 on 06 Jul; 06 Jul; 05 Jul (J C Winterbottom).

73.304 *Leucania loreyi* (Duponchel, 1827) **COSMOPOLITAN** Migrant

Recorded in: SY66. SY66/MT 0001 Portland (SY6868); 2 on 07 Oct; 05 Nov (M Cade).

73.314 *Euxoa nigricans* (Linnaeus, 1761) **GARDEN DART**

Recorded in: SY66; SY67; SY78. SY67/6870 Isle of Portland (SY6870); 11 Aug (D Saunders). SY78/MT 0008 West Stafford (SY7289); 24 Aug, leg. E S Rose (E S Rose, A Rose).

73.315 *Agrotis bigramma* (Esper, 1790) **GREAT DART** Rare migrant

Recorded in: SY66. SY66/MT 0001 Portland (SY6868); 08 Aug (M Cade).

73.316 *Agrotis cinerea* ([Denis & Schiffermüller], 1775) **LIGHT FEATHERED RUSTIC** Nb

Recorded in: SY68; SZ07. SY68/6589 Martinsdown (SY6588); 29 Jun (J M Elliott). SZ07/0377 Durlston Country Park (SZ0377); 02 Jun, leg. S Breeze; 09 Jun, leg. S Breeze; 5 on 11 Jun, leg. S Breeze; 5 on 13 Jun, leg. S Breeze; 14 Jun, leg. S Breeze; 4 on 16 Jun, leg. S Breeze; 2 on 17 Jun, leg. S Breeze; 25 Jun, leg. S Breeze; 2 on 29 Jun, leg. S Breeze (J Gibbons, S Breeze). SZ07/MT 0002 Swanage (SZ0278); 04 Jun; 06 Jun (P England).

73.322 *Agrotis vestigialis* (Hufnagel, 1766) **ARCHER'S DART** Local

Recorded in: SY79; SY98. South Middlebere heathland (SY9685); male on 28 Aug (M C Harvey). SY79/MT 0001 Puddletown (SY7695); 21 Jul (H G Wood Homer).

73.324 *Agrotis trux* (Hübner, [1824]) **CRESCENT DART** Local

Recorded in: SY39; SY49; SY66; SY67; SY68; SZ07; SZ09. Dorset (SY4691); 10 Aug (M S Parsons). Dorset (SY4790); 08 Aug (T Brereton). Frankland Crescent, Parkstone (SZ0591); 21 Jul (J Seawright). Groves Nursery, Bridport (SY4691); 19 Jul; 10 Aug (M S Parsons). SY39/MT 0001 Charmouth (SY3693); 19 Jul; 2 on 31 Jul (G Sell). SY49/MT 0002 Bothenhampton (SY4892); 18 Jul; 19 Jul; 23 Jul; 24 Jul; 2 on 29 Jul; 30 Jul; 31 Jul; 02 Aug; 15 Aug (M S Parsons). SY67/6676 Weymouth (SY6676); 16 Jul; 01 Aug; 02 Aug (D Foot). SY67/6870 Isle of Portland (SY6870); 2 on 14 Jul; 16 Jul; 17 Jul; 2 on 22 Jul; 29 Jul; 01 Aug; 09 Aug (D Saunders). SY67/6972 Isle of Portland (SY6972); 10 Aug (J Oughton). SY67/MT 0002 Weymouth (SY6676); 16 Jul; 01 Aug; 02 Aug (D Foot). SY67/MT 0005 Portland (SY6871); 18 Jul (J Williamson). SY67/MT 0006 Weymouth (SY6778); 21 Jul (J Oughton). SY68/MT 0003 Weymouth (SY6784); 24 Jul; 01 Aug (P Harris). SZ07/0377 Durlston Country Park (SZ0377); 26 Jul, leg. S Breeze; 03 Aug, leg. S Breeze (J Gibbons, S Breeze). SZ07/MT 0002 Swanage (SZ0278); 01 Aug (P England).

74.012 *Earias insulana* (Boisduval, 1833) **EGYPTIAN BOLLWORM** Import

Recorded in: SY66. SY66/MT 0001 Portland (SY6868); 02 Oct (M Cade).

Recorders

Records were gratefully received from the following 220 recorders: A Baker; A Barlow; A Bolton; A Bryant; A Butler; A Butterworth; A Corton; A H Bicker; A Hitchcock; A J Sherring; A M Thorne; A Marler; A O J Evans; A P Foster; A Parkes; A Rose; A Rosenthal; A Sankey; A Stewart; A Taylor; A Wragg; B Boddington; B Coleman; B Gullock; B P Pickess; B Steedman; Bournemouth Naturally Survey Group; C Bolton; C Bulman; C Chesters; C E Bolton; C F Blyth; C Forrest; C Gleed-Owen; C Iles; C Mason; C McMullen; C Paul; C Pinder; C R Burningham; C Steele; C Thackery; C Thackway; C Thain; D C G Brown; D Carter; D Dennis; D Derrick; D Dodge; D E Hallett; D Emblem; D Emery; D Foot; D Fowler; D Grundy; D Higginson-Tranter; D J Evans; D Lawrence; D Levy; D Lonsdale; D Mead; D Saunders; D Slade; Dee Stephens; Durlston Rangers; E S Rose; E Thick; G A Nash; G Calow; G Hole; G Laing; G Linton; G R Hopkins; G Sell; H Chittenden; H G Wood Homer; H Lewis; H R Chittenden; I Laing; I McNeil; I Middlebrook; I P Duckworth; J A Newbould; J Adams; J Baker; J Barkham; J C Winterbottom; J Campbell; J Clarke; J Craig; J D McMillan; J D Powne; J Davis; J E Down; J E Slingsby; J Francis; J Gale; J Gibbons; J Gilbert; J H S Cox; J Hunnisett; J Knowler; J Lucas; J M Elliott; J Mannerings; J Oughton; J Rayner; J Reeve; J Seawright; J Southworth; J T Martin; J van Breda; J W Wescombe; J Walls; J White; J Williamson; J Wilson; K Elborn; K Maudsley; K Robins; K Staddon; K Venn; L Aggas; L Creedon; L de Whalley; L J Hill; L King; L Pullen; L Smith; L Southall; L Taylor; M Bellingham; M C Harvey; M Cade; M E Hammond; M Edwards; M Fontein; M Fussell; M Hansford; M Hetherington; M J Lawson; M James; M Jeffes; M Lowe; M Martin; M Plaxton; M Raper; M S Parsons; M S Warren; M Smith; M Storey; M Taylor; M Waters; M Wemyss; M Wilson; N Hall; N Howell; N J Howell; N J Hull; N Ngo; N Sluman; N Smithson; N Spring; P A Pires; P Bruce-Jones; P Darch; P England; P Farrant; P Gillingham; P H Sterling; P Harris; P Hunt; P N Butter; P Newton; P Smith; R Aquilina; R Blake; R Brunt; R Cole; R Farrant; R Ford; R Jones; R Knowles; R Lambert; R Markham; R Oxtoby; R Payne; R Rogers; R Skinner; R Terry; R W Adams; R W Steedman; R Walker; 'Ricky' Lambert; S A Clarke; S Breeze; S Buckle; S Dyason; S Ellis; S Faulkner; S Foote; S J Breeze; S J Fry; S Luker; S M Madigan; S Masters; S McKean; S Oliver; S Philp; S Warren; S Whitehouse; T Brereton; T Morris; T Pennington; V Giavarini; W Last; W T Franklin; W Urwin; W W Bown & Z Randle.

My apologies if anyone has been omitted from this list.

References

Agassiz, D.J.L., Beavan, S.D. & Heckford, R.J. 2013. *A checklist of the Lepidoptera of the British Isles*. Field Studies Council.