

# DORSET MACRO-MOTHS 2014

## COUNTY MACRO-MOTH RECORDER'S REPORT

LESLIE J. EVANS-HILL FRES

*Butterfly Conservation, Manor Yard, East Lulworth, Dorset BH20 5QP*

*E-mail: levans-hill@butterfly-conservation.org*

### Abstract

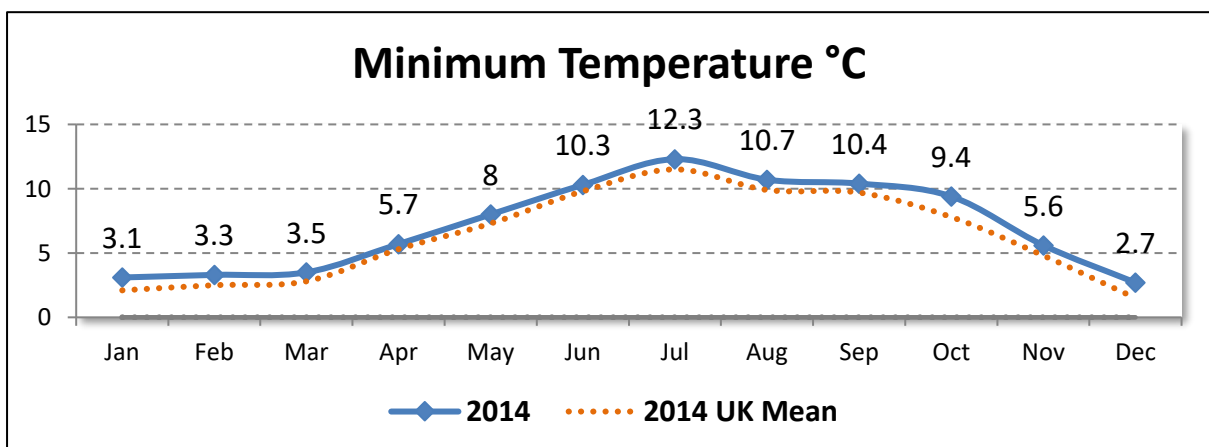
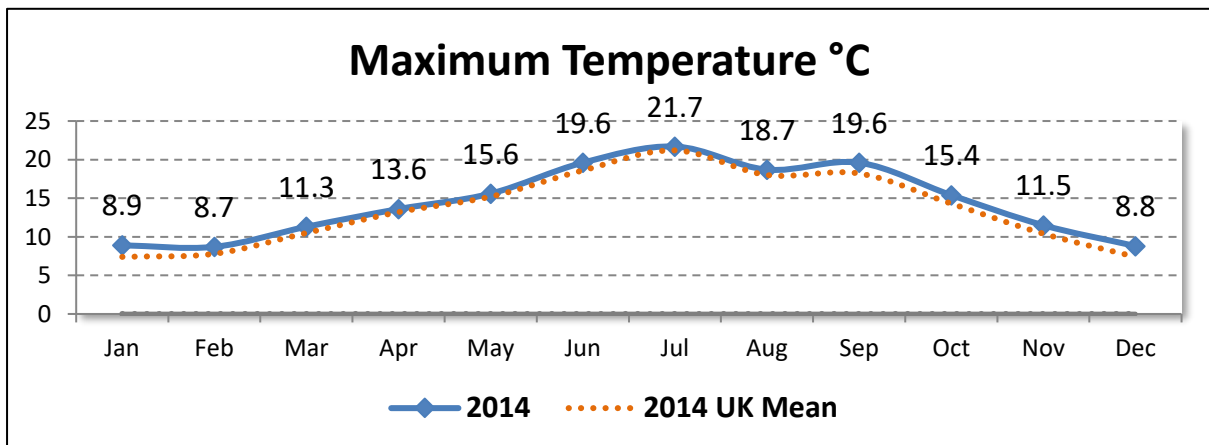
Presented here are data pertaining to submitted records of local macro-moth records of interest during the year 2014 in Dorset administrative and vice-county (9). Errors & omissions expected.

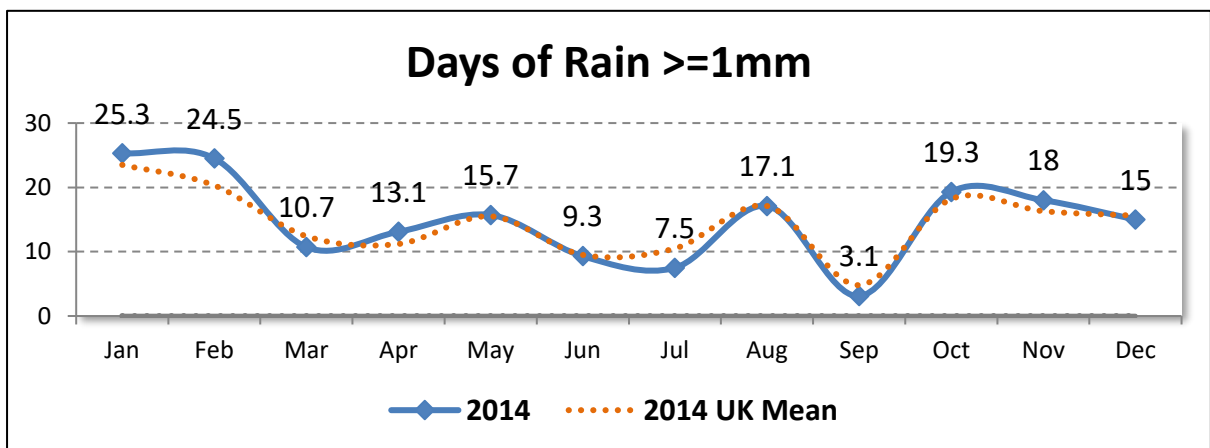
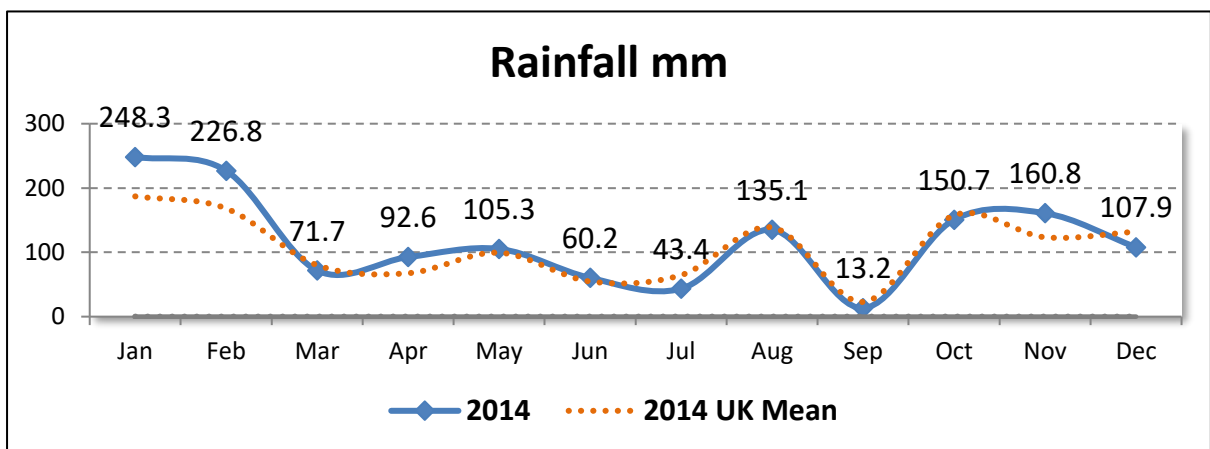
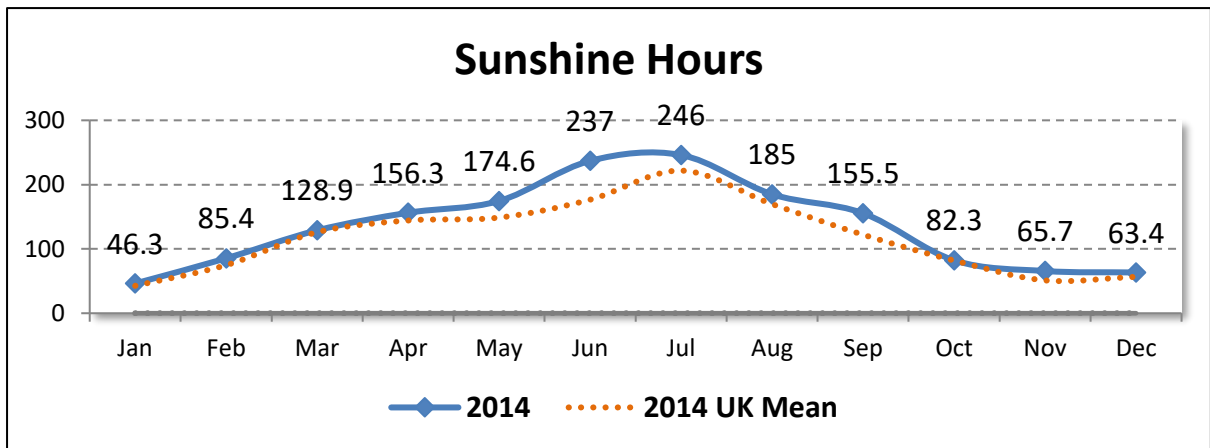
### Records and Species per Year

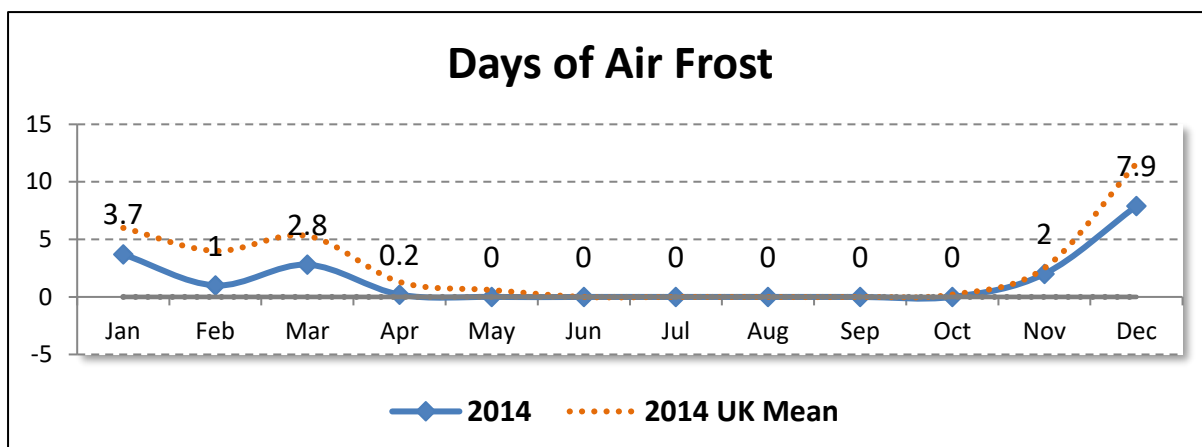
<i>Year</i>	<i>Records</i>	<i>Species</i>
<b>2014</b>	64,949	551

### Weather

All data are © Crown Copyright. UK Met Office.







### New to Dorset

Two species are confirmed new to Dorset during 2014:

- *Chlorissa cloraria* (Hübner, [1813]) **SOUTHERN GRASS EMERALD** from Portland (SY6768); 1 Adult on 18 Jul 2014 by R Payne.
- *Pechipogo plumigeralis* (Hübner, [1825]) **PLUMED FAN-FOOT** from Corfe Hills, Broadstone (SY9996); 1 Adult on 30 Sep 2014 by J Seawright.

### Species per 10km

All life stages – Unverified records and records where there is doubt are excluded.

<i>10km</i>	<i>Species</i>	<i>10km</i>	<i>Species</i>	<i>10km</i>	<i>Species</i>	<i>10km</i>	<i>Species</i>
<b>ST20</b>	0	<b>ST82</b>	85	<b>SY66</b>	231	<b>SZ07</b>	273
<b>ST30</b>	0	<b>ST90</b>	85	<b>SY67</b>	311	<b>SZ08</b>	275
<b>ST40</b>	199	<b>ST91</b>	227	<b>SY68</b>	361	<b>SZ09</b>	245
<b>ST50</b>	1	<b>SU00</b>	307	<b>SY69</b>	152		
<b>ST51</b>	31	<b>SU01</b>	63	<b>SY77</b>	17		
<b>ST60</b>	286	<b>SU02</b>	0	<b>SY78</b>	289		
<b>ST61</b>	231	<b>SU10</b>	0	<b>SY79</b>	382		
<b>ST70</b>	160	<b>SU11</b>	0	<b>SY87</b>	4		
<b>ST71</b>	130	<b>SY39</b>	275	<b>SY88</b>	276		
<b>ST72</b>	0	<b>SY48</b>	8	<b>SY89</b>	297		
<b>ST73</b>	0	<b>SY49</b>	299	<b>SY97</b>	7		
<b>ST80</b>	298	<b>SY58</b>	233	<b>SY98</b>	276		
<b>ST81</b>	46	<b>SY59</b>	89	<b>SY99</b>	297		

## 2014 Summary

All figures are for adults. Records with vague dates are excluded; however, unverified records are included. For species that overwinter as adults or emerge the year prior, the earliest and latest dates are unavailable.

<i>Code</i>	<i>Taxon</i>	<i>Vernacular</i>	<i>Records</i>	<i>Individuals</i>	<i>Earliest</i>	<i>Latest</i>
	<i>Acronicta tridens/psi</i>	<b>DARK DAGGER / GREY DAGGER</b>	185	261	21 Apr	19 Sep
	<i>Amphipoea oculea</i> agg.	<b>EAR MOTH AGG.</b>	63	81	03 Jul	20 Sep
	<i>Amphipyra pyramidea</i> agg.	<b>COPPER UNDERWING AGG.</b>	87	93	17 Jul	18 Oct
	<i>Epirrita dilutata</i> agg.	<b>NOVEMBER MOTH AGG.</b>	64	113	14 Oct	18 Nov
	<i>Euxoa tritici/obelisca</i>	<b>WHITE-LINE DART/SQUARE-SPOT DART</b>	6	8	14 Jul	18 Aug
	<i>Hoplodrina octogenaria/blanda</i>	<b>UNCERTAIN/RUSTIC AGG.</b>	819	6393	27 May	26 Sep
	<i>Mesapamea secalis</i> agg.	<b>COMMON RUSTIC AGG.</b>	590	3964	10 Jun	28 Sep
	<i>Oligia strigilis</i> agg.	<b>MARBLED MINOR AGG.</b>	509	1921	01 May	13 Aug
3.001	<i>Triodia sylvina</i>	<b>ORANGE SWIFT</b>	122	179	29 Jul	28 Sep
3.002	<i>Korscheltellus lupulina</i>	<b>COMMON SWIFT</b>	178	338	20 Apr	30 Jul
3.004	<i>Phymatopus hecta</i>	<b>GOLD SWIFT</b>	7	14	24 Jun	01 Jul
3.005	<i>Hepialus humuli</i>	<b>GHOST MOTH</b>	63	75	01 Jun	04 Aug
50.002	<i>Zeuzera pyrina</i>	<b>LEOPARD MOTH</b>	5	5	21 Jun	23 Jul
50.003	<i>Phragmataecia castaneae</i>	<b>REED LEOPARD</b>	3	3	09 Jun	11 Jul
53.001	<i>Apoda limacodes</i>	<b>FESTOON</b>	32	36	07 Jun	28 Jul
54.002	<i>Adscita statices</i>	<b>FORESTER</b>	8	15	01 Jun	03 Jul
54.003	<i>Adscita geryon</i>	<b>CISTUS FORESTER</b>	8	19	31 May	15 Jun
54.008	<i>Zygaena filipendulae</i>	<b>SIX-SPOT BURNET</b>	201	590	09 Jun	07 Aug
54.009	<i>Zygaena loniceriae</i>	<b>NARROW-BORDERED FIVE-SPOT BURNET</b>	20	98	20 May	15 Jul
54.010	<i>Zygaena trifolii</i>	<b>FIVE-SPOT BURNET</b>	86	473	06 Jun	22 Jul
65.001	<i>Falcaria lacertinaria</i>	<b>SCALLOPED HOOK-TIP</b>	104	156	09 Apr	06 Sep
65.002	<i>Watsonalla binaria</i>	<b>OAK HOOK-TIP</b>	130	174	28 Apr	30 Sep
65.003	<i>Watsonalla cultraria</i>	<b>BARRED HOOK-TIP</b>	19	19	22 Apr	25 Sep
65.005	<i>Drepana falcataria</i>	<b>PEBBLE HOOK-TIP</b>	198	300	21 Apr	30 Oct
65.007	<i>Cilix glaucata</i>	<b>CHINESE CHARACTER</b>	313	496	21 Apr	28 Sep

<i>Code</i>	<i>Taxon</i>	<i>Vernacular</i>	<i>Records</i>	<i>Individuals</i>	<i>Earliest</i>	<i>Latest</i>
65.008	<i>Thyatira batis</i>	PEACH BLOSSOM	72	88	18 May	18 Sep
65.009	<i>Habrosyne pyritoides</i>	BUFF ARCHES	367	857	22 May	25 Sep
65.010	<i>Tethea ocellaris</i>	FIGURE OF EIGHTY	59	84	21 May	23 Jul
65.013	<i>Ochropacha duplaris</i>	COMMON LUTESTRING	65	108	02 Jun	01 Aug
65.015	<i>Polyploca ridens</i>	FROSTED GREEN	12	14	02 Apr	22 Apr
65.016	<i>Achlya flavicornis</i>	YELLOW HORNED	31	82	25 Feb	18 Mar
66.001	<i>Poecilocampa populi</i>	DECEMBER MOTH	68	243	Unavailable	Unavailable
66.002	<i>Trichiura crataegi</i>	PALE EGGAR	32	51	28 Aug	26 Sep
66.003	<i>Malacosoma neustria</i>	LACKEY	186	499	13 Jun	06 Aug
66.005	<i>Eriogaster lanestris</i>	SMALL EGGAR	3	5	30 Mar	03 Apr
66.006	<i>Lasiocampa trifolii</i>	GRASS EGGAR	3	3	29 Jul	30 Aug
66.007	<i>Lasiocampa quercus</i>	OAK EGGAR	96	121	15 Jul	03 Sep
66.008	<i>Macrothylacia rubi</i>	FOX MOTH	9	9	09 May	19 Jun
66.010	<i>Euthrix potatoria</i>	DRINKER	232	450	30 May	30 Aug
66.012	<i>Gastropacha quercifolia</i>	LAPPET	3	3	07 Jul	26 Jul
68.001	<i>Saturnia pavonia</i>	EMPEROR MOTH	5	6	30 Mar	15 May
69.001	<i>Mimas tiliae</i>	LIME HAWK-MOTH	31	34	24 Apr	22 Jul
69.002	<i>Smerinthus ocellata</i>	EYED HAWK-MOTH	128	156	22 Apr	23 Jul
69.003	<i>Laothoe populi</i>	POPLAR HAWK-MOTH	477	654	17 Apr	06 Sep
69.004	<i>Agrius convolvuli</i>	CONVOLVULUS HAWK-MOTH	19	19	30 Aug	31 Oct
69.005	<i>Acherontia atropos</i>	DEATH'S-HEAD HAWK-MOTH	2	2	07 Oct	29 Oct
69.006	<i>Sphinx ligustri</i>	PRIVET HAWK-MOTH	177	258	15 May	21 Aug
69.007	<i>Sphinx pinastri</i>	PINE HAWK-MOTH	61	89	17 Apr	18 Sep
69.008	<i>Hemaris tityus</i>	NARROW-BORDERED BEE HAWK-MOTH	1	1	05 May	05 May
69.010	<i>Macroglossum stellatarum</i>	HUMMING-BIRD HAWK-MOTH	194	214	19 Feb	20 Nov
69.011	<i>Daphnis nerii</i>	OLEANDER HAWK-MOTH	1	1	18 Oct	18 Oct
69.016	<i>Deilephila elpenor</i>	ELEPHANT HAWK-MOTH	474	1604	21 May	24 Sep
69.017	<i>Deilephila porcellus</i>	SMALL ELEPHANT HAWK-MOTH	152	326	15 May	28 Jul

<i>Code</i>	<i>Taxon</i>	<i>Vernacular</i>	<i>Records</i>	<i>Individuals</i>	<i>Earliest</i>	<i>Latest</i>
70.002	<i>Idaea muricata</i>	<b>PURPLE-BORDERED GOLD</b>	6	11	22 Jun	11 Jul
70.003	<i>Idaea ochrata</i>	<b>BRIGHT WAVE</b>	1	1	23 Jul	23 Jul
70.004	<i>Idaea rusticata</i>	<b>LEAST CARPET</b>	20	22	09 Jul	04 Aug
70.006	<i>Idaea fuscovenosa</i>	<b>DWARF CREAM WAVE</b>	59	77	30 May	06 Aug
70.008	<i>Idaea seriata</i>	<b>SMALL DUSTY WAVE</b>	79	96	15 May	25 Sep
70.009	<i>Idaea subsericeata</i>	<b>SATIN WAVE</b>	46	49	12 May	04 Sep
70.010	<i>Idaea sylvestraria</i>	<b>DOTTED BORDER WAVE</b>	6	11	07 Jul	16 Jul
70.011	<i>Idaea dimidiata</i>	<b>SINGLE-DOTTED WAVE</b>	395	655	08 Jun	01 Oct
70.012	<i>Idaea trigeminata</i>	<b>TREBLE BROWN SPOT</b>	86	179	27 May	26 Sep
70.013	<i>Idaea biselata</i>	<b>SMALL FAN-FOOTED WAVE</b>	383	1199	12 Jun	02 Oct
70.015	<i>Idaea emarginata</i>	<b>SMALL SCALLOP</b>	5	9	07 Jul	26 Jul
70.016	<i>Idaea aversata</i>	<b>RIBAND WAVE</b>	730	3127	29 May	29 Sep
70.017	<i>Idaea degeneraria</i>	<b>PORTLAND RIBBON WAVE</b>	4	5	20 Jun	05 Sep
70.018	<i>Idaea straminata</i>	<b>PLAIN WAVE</b>	24	45	14 Jun	23 Jul
70.020	<i>Scopula nigropunctata</i>	<b>SUB-ANGLED WAVE</b>	1	1	19 Jul	19 Jul
70.023	<i>Scopula marginepunctata</i>	<b>MULLEIN WAVE</b>	49	61	28 May	01 Oct
70.024	<i>Scopula imitaria</i>	<b>SMALL BLOOD-VEIN</b>	151	177	14 Jun	30 Sep
70.025	<i>Scopula immutata</i>	<b>LESSER CREAM WAVE</b>	5	5	09 Jul	26 Jul
70.027	<i>Scopula floslactata</i>	<b>CREAM WAVE</b>	22	26	13 May	03 Jul
70.028	<i>Scopula emutaria</i>	<b>ROSY WAVE</b>	7	17	23 Jun	26 Jul
70.029	<i>Timandra comae</i>	<b>BLOOD-VEIN</b>	404	548	12 May	31 Oct
70.030	<i>Cyclophora pendularia</i>	<b>DINGY MOCHA</b>	3	3	11 Jul	01 Aug
70.031	<i>Cyclophora annularia</i>	<b>MOCHA</b>	70	273	24 Apr	23 Sep
70.032	<i>Cyclophora albipunctata</i>	<b>BIRCH MOCHA</b>	36	49	28 Apr	28 Sep
70.033	<i>Cyclophora puppillaria</i>	<b>BLAIR'S MOCHA</b>	3	3	05 Sep	31 Oct
70.034	<i>Cyclophora ruficiliaria</i>	<b>JERSEY MOCHA</b>	1	1	14 Aug	14 Aug
70.036	<i>Cyclophora punctaria</i>	<b>MAIDEN'S BLUSH</b>	170	234	12 Apr	19 Sep
70.037	<i>Cyclophora linearia</i>	<b>CLAY TRIPLE-LINES</b>	57	78	13 May	23 Sep

<i>Code</i>	<i>Taxon</i>	<i>Vernacular</i>	<i>Records</i>	<i>Individuals</i>	<i>Earliest</i>	<i>Latest</i>
70.038	<i>Rhodometra sacraria</i>	VESTAL	72	103	09 Jun	16 Nov
70.041	<i>Scotopteryx luridata</i>	JULY BELLE	3	4	01 Jun	29 Jul
70.043	<i>Scotopteryx bipunctaria</i>	CHALK CARPET	25	52	06 Jul	04 Sep
70.045	<i>Scotopteryx chenopodiata</i>	SHADED BROAD-BAR	44	71	22 Jun	22 Aug
70.046	<i>Orthonama vittata</i>	OBLIQUE CARPET	1	1	11 Jul	11 Jul
70.047	<i>Nycterosea obstipata</i>	GEM	33	40	27 Feb	28 Nov
70.049	<i>Xanthorhoe fluctuata</i>	GARDEN CARPET	334	390	09 Apr	29 Oct
70.051	<i>Xanthorhoe spadicearia</i>	RED TWIN-SPOT CARPET	441	867	03 Apr	26 Sep
70.052	<i>Xanthorhoe ferrugata</i>	DARK-BARRED TWIN-SPOT CARPET	8	8	29 May	09 Sep
70.053	<i>Xanthorhoe designata</i>	FLAME CARPET	64	74	21 Apr	05 Sep
70.054	<i>Xanthorhoe montanata</i>	SILVER-GROUND CARPET	176	276	06 May	11 Jul
70.059	<i>Campptogramma bilineata</i>	YELLOW SHELL	90	121	31 May	18 Sep
70.061	<i>Epirrhoe alternata</i>	COMMON CARPET	370	562	21 Apr	16 Sep
70.062	<i>Epirrhoe rivata</i>	WOOD CARPET	16	24	07 Jun	29 Jul
70.063	<i>Epirrhoe galiata</i>	GALIUM CARPET	22	30	15 May	11 Sep
70.064	<i>Euphyia biangulata</i>	CLOAKED CARPET	2	2	12 Jul	23 Jul
70.065	<i>Euphyia unangulata</i>	SHARP-ANGLED CARPET	36	37	16 May	28 Jul
70.066	<i>Earophila badiata</i>	SHOULDER STRIPE	29	45	08 Mar	07 May
70.067	<i>Anticlea derivata</i>	STREAMER	28	31	30 Mar	14 May
70.069	<i>Pelurga comitata</i>	DARK SPINACH	8	11	16 Jul	28 Jul
70.070	<i>Larentia clavaria</i>	MALLOW	9	9	28 Sep	29 Oct
70.074	<i>Hydriomena furcata</i>	JULY HIGHFLYER	185	483	13 Jun	03 Sep
70.075	<i>Hydriomena impluviata</i>	MAY HIGHFLYER	21	24	29 Apr	17 Jun
70.076	<i>Hydriomena ruberata</i>	RUDDY HIGHFLYER	2	3	28 Apr	11 Jul
70.077	<i>Pennithera firmata</i>	PINE CARPET	65	95	29 Apr	29 Oct
70.079	<i>Thera britannica</i>	SPRUCE CARPET	137	213	29 Mar	21 Nov
70.081	<i>Thera obeliscata</i>	GREY PINE CARPET	134	227	20 Apr	08 Nov
70.083	<i>Thera cupressata</i>	CYPRESS CARPET	70	74	15 May	31 Oct

<i>Code</i>	<i>Taxon</i>	<i>Vernacular</i>	<i>Records</i>	<i>Individuals</i>	<i>Earliest</i>	<i>Latest</i>
70.084	<i>Plemyria rubiginata</i>	<b>BLUE-BORDERED CARPET</b>	41	47	14 Jun	28 Jul
70.085	<i>Cidaria fulvata</i>	<b>BARRED YELLOW</b>	34	49	06 Jun	12 Jul
70.086	<i>Electrophaes corylata</i>	<b>BROKEN-BARRED CARPET</b>	56	73	01 May	12 Jul
70.087	<i>Cosmorhoe ocellata</i>	<b>PURPLE BAR</b>	87	105	13 May	26 Sep
70.089	<i>Eulithis prunata</i>	<b>PHOENIX</b>	56	71	12 May	07 Aug
70.090	<i>Eulithis testata</i>	<b>CHEVRON</b>	9	10	05 Jul	29 Jul
70.092	<i>Eulithis mellinata</i>	<b>SPINACH</b>	1	1	15 Aug	15 Aug
70.093	<i>Gandaritis pyraliata</i>	<b>BARRED STRAW</b>	138	153	14 Jun	17 Aug
70.094	<i>Ecliptopera silaceata</i>	<b>SMALL PHOENIX</b>	123	167	17 Apr	30 Aug
70.095	<i>Chloroclysta siterata</i>	<b>RED-GREEN CARPET</b>	103	194	Unavailable	Unavailable
70.097	<i>Dysstroma truncata</i>	<b>COMMON MARBLED CARPET</b>	698	1537	24 Apr	22 Nov
70.098	<i>Dysstroma citrata</i>	<b>DARK MARBLED CARPET</b>	8	8	28 Jul	28 Aug
70.099	<i>Colostygia olivata</i>	<b>BEECH-GREEN CARPET</b>	1	1	15 Jul	15 Jul
70.100	<i>Colostygia pectinataria</i>	<b>GREEN CARPET</b>	190	280	21 Apr	01 Oct
70.101	<i>Colostygia multistrigaria</i>	<b>MOTTLED GREY</b>	8	11	10 Jan	09 Apr
70.103	<i>Lampropteryx suffumata</i>	<b>WATER CARPET</b>	14	15	15 Mar	02 Jun
70.104	<i>Lampropteryx otregiata</i>	<b>DEVON CARPET</b>	1	1	30 May	30 May
70.106	<i>Operophtera brumata</i>	<b>WINTER MOTH</b>	17	24	Unavailable	Unavailable
70.107	<i>Epirrita dilutata</i>	<b>NOVEMBER MOTH</b>	9	22	22 Oct	23 Oct
70.109	<i>Epirrita autumnata</i>	<b>AUTUMNAL MOTH</b>	1	1	28 Oct	28 Oct
70.111	<i>Asthenia albulata</i>	<b>SMALL WHITE WAVE</b>	48	223	04 May	28 Aug
70.112	<i>Euchoeca nebulata</i>	<b>DINGY SHELL</b>	10	10	05 Jun	06 Aug
70.114	<i>Hydrelia flammeolaria</i>	<b>SMALL YELLOW WAVE</b>	78	97	02 Jun	01 Aug
70.116	<i>Venusia blomeri</i>	<b>BLOMER'S RIVULET</b>	1	1	18 Jul	18 Jul
70.117	<i>Minoa murinata</i>	<b>DRAB LOOPER</b>	4	27	13 May	11 Jul
70.118	<i>Philereme vetulata</i>	<b>BROWN SCALLOP</b>	3	3	11 Jul	24 Jul
70.119	<i>Philereme transversata</i>	<b>DARK UMBER</b>	8	8	02 Jul	30 Jul
70.121	<i>Rheumaptera undulata</i>	<b>SCALLOP SHELL</b>	31	31	09 Jun	29 Jul



<i>Code</i>	<i>Taxon</i>	<i>Vernacular</i>	<i>Records</i>	<i>Individuals</i>	<i>Earliest</i>	<i>Latest</i>
70.123	<i>Triphosa dubitata</i>	TISSUE	1	1	28 Jul	28 Jul
70.126	<i>Horisme vitalbata</i>	SMALL WAVED UMBER	85	116	24 Apr	28 Aug
70.127	<i>Horisme tersata</i>	FERN	37	42	05 Jun	18 Sep
70.128	<i>Melanthia procellata</i>	PRETTY CHALK CARPET	65	174	27 Apr	11 Sep
70.130	<i>Odezia atrata</i>	CHIMNEY SWEEPER	2	2	17 Jun	02 Jul
70.131	<i>Mesotype didymata</i>	TWIN-SPOT CARPET	4	4	05 Jun	03 Jul
70.132	<i>Perizoma affinitata</i>	RIVULET	60	76	06 May	05 Sep
70.133	<i>Perizoma alchemillata</i>	SMALL RIVULET	143	200	13 Jun	03 Sep
70.134	<i>Perizoma bifaciata</i>	BARRED RIVULET	7	8	16 Jul	31 Jul
70.137	<i>Perizoma albulata</i>	GRASS RIVULET	4	4	14 May	19 Jul
70.138	<i>Perizoma flavofasciata</i>	SANDY CARPET	90	105	16 May	30 Jul
70.141	<i>Gymnoscelis rufifasciata</i>	DOUBLE-STRIPED PUG	490	952	05 Mar	16 Nov
70.142	<i>Chloroclystis v-ata</i>	V-PUG	151	198	12 Apr	28 Sep
70.143	<i>Pasiphila chloerata</i>	SLOE PUG	9	10	06 Jun	04 Jul
70.144	<i>Pasiphila rectangulata</i>	GREEN PUG	169	238	27 May	04 Sep
70.146	<i>Eupithecia haworthiata</i>	HAWORTH'S PUG	68	99	06 Jun	31 Jul
70.147	<i>Eupithecia tenuiata</i>	SLENDER PUG	11	12	24 Jun	28 Jul
70.148	<i>Eupithecia inturbata</i>	MAPLE PUG	29	43	19 Jun	06 Aug
70.150	<i>Eupithecia linariata</i>	TOADFLAX PUG	14	14	03 Jun	05 Sep
70.151	<i>Eupithecia pulchellata</i>	FOXGLOVE PUG	134	186	21 Apr	28 Aug
70.152	<i>Eupithecia ultimaria</i>	CHANNEL ISLANDS PUG	5	6	08 Jun	06 Aug
70.153	<i>Eupithecia plumbeolata</i>	LEAD-COLOURED PUG	2	3	11 Jul	11 Jul
70.156	<i>Eupithecia abbreviata</i>	BRINDLED PUG	99	188	12 Mar	01 Jun
70.157	<i>Eupithecia dodoneata</i>	OAK-TREE PUG	29	35	16 Apr	26 Jun
70.159	<i>Eupithecia phoeniceata</i>	CYPRESS PUG	23	32	14 Aug	11 Oct
70.160	<i>Eupithecia tripunctaria</i>	WHITE-SPOTTED PUG	33	38	08 May	21 Aug
70.161	<i>Eupithecia virgaureata</i>	GOLDEN-ROD PUG	1	1	11 Sep	11 Sep
70.162	<i>Eupithecia tantillaria</i>	DWARF PUG	7	7	21 Apr	07 Jun

<i>Code</i>	<i>Taxon</i>	<i>Vernacular</i>	<i>Records</i>	<i>Individuals</i>	<i>Earliest</i>	<i>Latest</i>
70.163	<i>Eupithecia lariciata</i>	<b>LARCH PUG</b>	10	11	18 May	03 Jul
70.166	<i>Eupithecia simpliciatata</i>	<b>PLAIN PUG</b>	6	6	19 Jul	02 Aug
70.168	<i>Eupithecia nanata</i>	<b>NARROW-WINGED PUG</b>	38	45	22 Apr	04 Sep
70.169	<i>Eupithecia innotata</i>	<b>ANGLE-BARRED PUG</b>	3	3	08 Jun	13 Aug
70.171	<i>Eupithecia indigata</i>	<b>OCHREOUS PUG</b>	7	16	14 May	23 May
70.173	<i>Eupithecia centaureata</i>	<b>LIME-SPECK PUG</b>	153	196	28 Apr	23 Oct
70.176	<i>Eupithecia intricata</i>	<b>FREYER'S PUG</b>	32	40	26 May	19 Jul
70.179	<i>Eupithecia absinthiata</i>	<b>WORMWOOD PUG</b>	104	114	31 May	02 Sep
70.181	<i>Eupithecia valerianata</i>	<b>VALERIAN PUG</b>	9	10	16 May	15 Jun
70.182	<i>Eupithecia assimilata</i>	<b>CURRENT PUG</b>	89	98	21 Apr	03 Sep
70.183	<i>Eupithecia vulgata</i>	<b>COMMON PUG</b>	243	340	23 Apr	30 Aug
70.184	<i>Eupithecia exigua</i>	<b>MOTTLED PUG</b>	69	88	16 May	10 Jul
70.187	<i>Eupithecia icterata</i>	<b>TAWNY SPECKLED PUG</b>	9	9	23 Jul	05 Sep
70.188	<i>Eupithecia succenturiata</i>	<b>BORDERED PUG</b>	7	8	10 Jul	29 Jul
70.189	<i>Eupithecia subumbrata</i>	<b>SHADED PUG</b>	8	9	30 May	11 Jul
70.190	<i>Eupithecia subfuscata</i>	<b>GREY PUG</b>	80	100	13 May	23 Aug
70.192	<i>Aplocera plagiata</i>	<b>TREBLE-BAR</b>	20	21	19 May	20 Sep
70.193	<i>Aplocera efformata</i>	<b>LESSER TREBLE-BAR</b>	6	6	31 Jul	03 Sep
70.195	<i>Chesias legatella</i>	<b>STREAK</b>	2	2	26 Oct	30 Oct
70.198	<i>Lobophora halterata</i>	<b>SERAPHIM</b>	11	25	05 May	17 Jun
70.199	<i>Pterapherapteryx sexalata</i>	<b>SMALL SERAPHIM</b>	56	72	23 May	06 Aug
70.200	<i>Acasis viretata</i>	<b>YELLOW-BARRED BRINDLE</b>	65	67	06 May	18 Sep
70.201	<i>Trichopteryx polycommata</i>	<b>BARRED TOOTH-STRIPED</b>	1	1	29 Mar	29 Mar
70.202	<i>Trichopteryx carpinata</i>	<b>EARLY TOOTH-STRIPED</b>	38	76	26 Mar	01 May
70.205	<i>Abraxas grossulariata</i>	<b>MAGPIE MOTH</b>	263	437	07 Jun	23 Sep
70.206	<i>Abraxas sylvata</i>	<b>CLOUDED MAGPIE</b>	6	7	18 Jul	15 Sep
70.207	<i>Lomaspilis marginata</i>	<b>CLOUDED BORDER</b>	456	1125	21 Apr	29 Sep
70.208	<i>Ligdia adustata</i>	<b>SCORCHED CARPET</b>	115	141	10 Apr	23 Sep

<i>Code</i>	<i>Taxon</i>	<i>Vernacular</i>	<i>Records</i>	<i>Individuals</i>	<i>Earliest</i>	<i>Latest</i>
70.211	<i>Macaria notata</i>	PEACOCK MOTH	4	4	29 Jul	28 Aug
70.212	<i>Macaria alternata</i>	SHARP-ANGLED PEACOCK	274	469	21 Apr	05 Sep
70.214	<i>Macaria liturata</i>	TAWNY-BARRED ANGLE	119	138	21 Apr	17 Sep
70.218	<i>Chiasmia clathrata</i>	LATTICED HEATH	9	13	29 Apr	27 Aug
70.221	<i>Cepphis advenaria</i>	LITTLE THORN	9	10	17 May	20 Jun
70.222	<i>Petrophora chlorosata</i>	BROWN SILVER-LINE	104	160	10 Apr	23 Jul
70.223	<i>Plagodis pulveraria</i>	BARRED UMBER	2	2	04 May	30 May
70.224	<i>Plagodis dolabraria</i>	SCORCHED WING	176	277	14 May	27 Aug
70.225	<i>Pachycnemia hippocastanaria</i>	HORSE CHESTNUT	50	122	31 Mar	28 Oct
70.226	<i>Opisthograptis luteolata</i>	BRIMSTONE MOTH	1149	2916	31 Mar	16 Oct
70.227	<i>Epione repandaria</i>	BORDERED BEAUTY	40	45	02 Jul	23 Sep
70.229	<i>Pseudopanthera macularia</i>	SPECKLED YELLOW	13	35	05 May	19 Jun
70.231	<i>Apeira syringaria</i>	LILAC BEAUTY	34	37	14 Jun	26 Sep
70.233	<i>Ennomos quercinaria</i>	AUGUST THORN	13	15	21 Jul	26 Sep
70.234	<i>Ennomos alniaria</i>	CANARY-SHOULDERED THORN	193	264	12 Jul	18 Oct
70.235	<i>Ennomos fuscantaria</i>	DUSKY THORN	281	561	23 Jul	02 Oct
70.236	<i>Ennomos erosaria</i>	SEPTEMBER THORN	49	122	03 Jul	01 Oct
70.237	<i>Selenia dentaria</i>	EARLY THORN	462	763	23 Feb	18 Sep
70.239	<i>Selenia tetralunaria</i>	PURPLE THORN	57	66	30 Mar	07 Sep
70.240	<i>Odontopera bidentata</i>	SCALLOPED HAZEL	104	139	17 Apr	15 Jun
70.241	<i>Crocallis elinguaris</i>	SCALLOPED OAK	215	318	17 Jun	04 Sep
70.243	<i>Ourapteryx sambucaria</i>	SWALLOW-TAILED MOTH	196	267	14 Jun	31 Oct
70.244	<i>Colotois pennaria</i>	FEATHERED THORN	97	183	28 Sep	29 Nov
70.245	<i>Alsophila aescularia</i>	MARCH MOTH	83	269	04 Mar	14 Apr
70.246	<i>Apocheima hispidaria</i>	SMALL BRINDLED BEAUTY	12	22	08 Mar	10 Apr
70.247	<i>Phigalia pilosaria</i>	PALE BRINDLED BEAUTY	11	22	24 Jan	06 Mar
70.248	<i>Lycia hirtaria</i>	BRINDLED BEAUTY	75	117	29 Mar	18 May
70.251	<i>Biston strataria</i>	OAK BEAUTY	156	508	16 Feb	22 Apr

<i>Code</i>	<i>Taxon</i>	<i>Vernacular</i>	<i>Records</i>	<i>Individuals</i>	<i>Earliest</i>	<i>Latest</i>
70.252	<i>Biston betularia</i>	<b>PEPPERED MOTH</b>	383	564	28 Apr	05 Sep
70.253	<i>Agriopis leucophaearia</i>	<b>SPRING USHER</b>	3	5	18 Feb	07 Mar
70.254	<i>Agriopis aurantiaria</i>	<b>SCARCE UMBER</b>	1	1	30 Nov	30 Nov
70.255	<i>Agriopis marginaria</i>	<b>DOTTED BORDER</b>	64	76	21 Feb	24 Apr
70.256	<i>Erannis defoliaria</i>	<b>MOTTLED UMBER</b>	17	26	10 Jan	22 Dec
70.257	<i>Menophra abruptaria</i>	<b>WAVED UMBER</b>	91	132	30 Mar	06 Aug
70.258	<i>Peribatodes rhomboidaria</i>	<b>WILLOW BEAUTY</b>	954	1901	15 May	30 Oct
70.264	<i>Deileptenia ribeata</i>	<b>SATIN BEAUTY</b>	33	62	14 Jun	28 Aug
70.265	<i>Alcis repandata</i>	<b>MOTTLED BEAUTY</b>	104	231	19 May	08 Sep
70.268	<i>Hypomecis punctinalis</i>	<b>PALE OAK BEAUTY</b>	2	2	17 Jul	18 Jul
70.270	<i>Ectropis crepuscularia</i>	<b>ENGRAILED</b>	172	365	04 Mar	28 Oct
70.272	<i>Paradarisa consonaria</i>	<b>SQUARE SPOT</b>	3	3	04 May	24 Jun
70.275	<i>Ematurga atomaria</i>	<b>COMMON HEATH</b>	18	52	05 May	11 Jul
70.276	<i>Bupalus piniaria</i>	<b>BORDERED WHITE</b>	15	23	08 May	11 Jul
70.277	<i>Cabera pusaria</i>	<b>COMMON WHITE WAVE</b>	214	307	13 May	07 Sep
70.278	<i>Cabera exanthemata</i>	<b>COMMON WAVE</b>	364	560	09 Apr	16 Sep
70.279	<i>Lomographa bimaculata</i>	<b>WHITE-PINION SPOTTED</b>	26	41	05 May	24 Jun
70.280	<i>Lomographa temerata</i>	<b>CLOUDED SILVER</b>	286	459	01 May	31 Jul
70.282	<i>Theria primaria</i>	<b>EARLY MOTH</b>	23	37	14 Feb	29 Mar
70.283	<i>Campaea margaritaria</i>	<b>LIGHT EMERALD</b>	450	779	18 May	26 Oct
70.284	<i>Hylaea fasciaria</i>	<b>BARRED RED</b>	32	37	23 May	15 Sep
70.287	<i>Charissa obscurata</i>	<b>ANNULET</b>	4	4	07 Jul	31 Jul
70.288	<i>Cleorodes lichenaria</i>	<b>BRUSSELS LACE</b>	340	582	01 May	28 Sep
70.292	<i>Dyscia fagaria</i>	<b>GREY SCALLOPED BAR</b>	1	1	05 May	05 May
70.294	<i>Aspitates ochrearia</i>	<b>YELLOW BELLE</b>	22	30	29 Apr	05 Sep
70.295	<i>Perconia strigillaria</i>	<b>GRASS WAVE</b>	5	14	23 May	19 Jun
70.297	<i>Pseudoterpna pruinata</i>	<b>GRASS EMERALD</b>	26	32	18 Jun	04 Sep
70.299	<i>Geometra papilionaria</i>	<b>LARGE EMERALD</b>	44	50	25 Jun	03 Aug

<i>Code</i>	<i>Taxon</i>	<i>Vernacular</i>	<i>Records</i>	<i>Individuals</i>	<i>Earliest</i>	<i>Latest</i>
70.300	<i>Comibaena bajularia</i>	<b>BLOTCHED EMERALD</b>	3	11	15 Jun	19 Jun
70.302	<i>Hemistola chrysoprasaria</i>	<b>SMALL EMERALD</b>	78	96	19 Jun	29 Sep
70.303	<i>Jodis lactearia</i>	<b>LITTLE EMERALD</b>	5	5	30 May	18 Jul
70.305	<i>Hemithea aestivaria</i>	<b>COMMON EMERALD</b>	189	271	31 May	03 Aug
70.307	<i>Chlorissa cloraria</i>	<b>SOUTHERN GRASS EMERALD</b>	1	1	18 Jul	18 Jul
71.003	<i>Cerura vinula</i>	<b>PUSS MOTH</b>	25	27	19 Apr	15 Jun
71.005	<i>Furcula furcula</i>	<b>SALLOW KITTEN</b>	79	136	24 Apr	03 Sep
71.006	<i>Furcula bicuspidata</i>	<b>ALDER KITTEN</b>	2	2	17 May	26 May
71.007	<i>Furcula bifida</i>	<b>POPLAR KITTEN</b>	23	27	05 May	01 Aug
71.009	<i>Stauropus fagi</i>	<b>LOBSTER MOTH</b>	53	69	04 May	23 Jul
71.010	<i>Drymonia dodonaea</i>	<b>MARBLED BROWN</b>	26	32	10 Apr	19 Jun
71.011	<i>Drymonia ruficornis</i>	<b>LUNAR MARBLED BROWN</b>	56	83	09 Apr	19 May
71.012	<i>Notodonta dromedarius</i>	<b>IRON PROMINENT</b>	152	188	21 Apr	31 Aug
71.013	<i>Notodonta ziczac</i>	<b>PEBBLE PROMINENT</b>	283	445	09 Apr	27 Aug
71.016	<i>Peridea anceps</i>	<b>GREAT PROMINENT</b>	72	98	09 Apr	31 May
71.017	<i>Pheosia tremula</i>	<b>SWALLOW PROMINENT</b>	147	183	18 Apr	04 Sep
71.018	<i>Pheosia gnoma</i>	<b>LESSER SWALLOW PROMINENT</b>	162	239	10 Apr	20 Sep
71.020	<i>Pterostoma palpina</i>	<b>PALE PROMINENT</b>	164	196	10 Apr	22 Aug
71.021	<i>Ptilodon capucina</i>	<b>COXCOMB PROMINENT</b>	115	143	21 Apr	05 Sep
71.023	<i>Odontosia carmelita</i>	<b>SCARCE PROMINENT</b>	4	4	22 Apr	28 Apr
71.024	<i>Ptilophora plumigera</i>	<b>PLUMED PROMINENT</b>	6	11	22 Nov	22 Nov
71.025	<i>Phalera bucephala</i>	<b>BUFF-TIP</b>	529	1070	21 Apr	05 Sep
71.027	<i>Clostera curtula</i>	<b>CHOCOLATE-TIP</b>	44	52	30 Mar	31 Oct
71.028	<i>Clostera pigra</i>	<b>SMALL CHOCOLATE-TIP</b>	1	4	23 Sep	23 Sep
72.001	<i>Scoliopteryx libatrix</i>	<b>HERALD</b>	95	119	Unavailable	Unavailable
72.002	<i>Rivula sericealis</i>	<b>STRAW DOT</b>	614	1489	21 May	30 Oct
72.003	<i>Hypena proboscidalis</i>	<b>SNOUT</b>	720	1270	17 May	29 Oct
72.004	<i>Hypena rostralis</i>	<b>BUTTONED SNOUT</b>	1	1	31 Oct	31 Oct

<i>Code</i>	<i>Taxon</i>	<i>Vernacular</i>	<i>Records</i>	<i>Individuals</i>	<i>Earliest</i>	<i>Latest</i>
72.006	<i>Hypena obsitalis</i>	<b>BLOXWORTH SNOUT</b>	12	13	16 Mar	06 Sep
72.007	<i>Hypena crassalis</i>	<b>BEAUTIFUL SNOUT</b>	5	5	22 Jun	18 Jul
72.009	<i>Leucoma salicis</i>	<b>WHITE SATIN</b>	10	11	23 Jun	20 Jul
72.010	<i>Lymantria monacha</i>	<b>BLACK ARCHES</b>	183	435	02 Jul	16 Sep
72.012	<i>Euproctis chrysorrhoea</i>	<b>BROWN-TAIL</b>	52	80	30 Jun	28 Sep
72.013	<i>Euproctis similis</i>	<b>YELLOW-TAIL</b>	254	485	22 May	29 Oct
72.015	<i>Calliteara pudibunda</i>	<b>PALE TUSOCK</b>	226	397	21 Apr	11 Jul
72.016	<i>Dicallomera fascelina</i>	<b>DARK TUSOCK</b>	6	9	23 Jun	23 Jul
72.017	<i>Orgyia antiqua</i>	<b>VAPOURER</b>	45	51	26 Jun	16 Oct
72.019	<i>Spilosoma lutea</i>	<b>BUFF ERMINE</b>	778	2570	21 Apr	11 Sep
72.020	<i>Spilosoma lubricipeda</i>	<b>WHITE ERMINE</b>	327	808	29 Mar	06 Sep
72.022	<i>Diaphora mendica</i>	<b>MUSLIN MOTH</b>	281	754	23 Mar	18 Jun
72.023	<i>Diacrisia sannio</i>	<b>CLOUDED BUFF</b>	12	13	30 May	07 Aug
72.024	<i>Phragmatobia fuliginosa</i>	<b>RUBY TIGER</b>	326	725	04 Apr	27 Sep
72.025	<i>Parasemia plantaginis</i>	<b>WOOD TIGER</b>	25	58	28 May	19 Jun
72.026	<i>Arctia caja</i>	<b>GARDEN TIGER</b>	181	402	06 Jun	06 Sep
72.027	<i>Arctia villica</i>	<b>CREAM-SPOT TIGER</b>	29	33	19 May	21 Jun
72.029	<i>Callimorpha dominula</i>	<b>SCARLET TIGER</b>	60	111	31 May	24 Jul
72.030	<i>Euplagia quadripunctaria</i>	<b>JERSEY TIGER</b>	158	314	02 Jul	18 Sep
72.031	<i>Tyria jacobaeae</i>	<b>CINNABAR</b>	210	325	28 Apr	26 Jul
72.032	<i>Coscinia cribraria</i>	<b>SPECKLED FOOTMAN</b>	1	1	23 Jul	23 Jul
72.035	<i>Miltochrista miniata</i>	<b>ROSY FOOTMAN</b>	379	1487	23 Jun	30 Oct
72.036	<i>Nudaria mundana</i>	<b>MUSLIN FOOTMAN</b>	82	217	06 Jun	31 Jul
72.037	<i>Thumatha senex</i>	<b>ROUND-WINGED MUSLIN</b>	29	119	24 Jun	26 Jul
72.038	<i>Cybosia mesomella</i>	<b>FOUR-DOTTED FOOTMAN</b>	26	35	12 Jun	03 Aug
72.041	<i>Lithosia quadra</i>	<b>FOUR-SPOTTED FOOTMAN</b>	299	1566	23 Jun	31 Oct
72.042	<i>Atolmis rubricollis</i>	<b>RED-NECKED FOOTMAN</b>	9	9	05 Jun	16 Jul
72.043	<i>Eilema depressa</i>	<b>BUFF FOOTMAN</b>	169	572	29 May	31 Oct

<i>Code</i>	<i>Taxon</i>	<i>Vernacular</i>	<i>Records</i>	<i>Individuals</i>	<i>Earliest</i>	<i>Latest</i>
72.044	<i>Eilema griseola</i>	DINGY FOOTMAN	471	3057	09 Jun	28 Oct
72.045	<i>Eilema lurideola</i>	COMMON FOOTMAN	542	5816	07 Jun	03 Sep
72.046	<i>Eilema complana</i>	SCARCE FOOTMAN	145	322	17 Jun	30 Aug
72.047	<i>Eilema caniola</i>	HOARY FOOTMAN	5	6	20 Jul	19 Sep
72.049	<i>Eilema sororcula</i>	ORANGE FOOTMAN	205	890	19 Apr	15 Jul
72.053	<i>Herminia tarsipennalis</i>	FAN-FOOT	234	407	06 Jun	26 Aug
72.055	<i>Herminia grisealis</i>	SMALL FAN-FOOT	160	216	17 May	12 Aug
72.057	<i>Pechipogo plumigeralis</i>	PLUMED FAN-FOOT	1	1	30 Sep	30 Sep
72.060	<i>Hypenodes humidalis</i>	MARSH OBLIQUE-BARRED	8	11	11 Jul	28 Sep
72.061	<i>Schrankia costaestrigalis</i>	PINION-STREAKED SNOUT	58	74	14 May	27 Oct
72.062	<i>Schrankia taenialis</i>	WHITE-LINE SNOUT	1	1	21 Jul	21 Jul
72.063	<i>Lygephila pastinum</i>	BLACKNECK	3	3	25 Jun	21 Jul
72.067	<i>Phytometra viridaria</i>	SMALL PURPLE-BARRED	14	16	26 Apr	29 Jul
72.069	<i>Laspeyria flexula</i>	BEAUTIFUL HOOK-TIP	196	321	08 Jun	22 Oct
72.070	<i>Trisateles emortualis</i>	OLIVE CRESCENT	1	1	11 Jul	11 Jul
72.072	<i>Eublemma ostrina</i>	PURPLE MARBLED	1	1	31 Oct	31 Oct
72.076	<i>Catocala fraxini</i>	CLIFDEN NONPAREIL	19	20	30 Aug	18 Oct
72.078	<i>Catocala nupta</i>	RED UNDERWING	29	32	30 Jul	14 Oct
72.081	<i>Catocala sponsa</i>	DARK CRIMSON UNDERWING	1	1	18 Jul	18 Jul
72.083	<i>Euclidia glyphica</i>	BURNET COMPANION	94	197	24 Apr	02 Jul
72.084	<i>Euclidia mi</i>	MOTHER SHIPTON	30	39	06 May	23 Jun
73.001	<i>Abrostola tripartita</i>	SPECTACLE	603	1045	17 Apr	27 Sep
73.002	<i>Abrostola triplasia</i>	DARK SPECTACLE	131	166	07 May	11 Oct
73.003	<i>Trichoplusia ni</i>	NI MOTH	3	3	28 Oct	31 Oct
73.004	<i>Thysanoplusia orichalcea</i>	SLENDER BURNISHED BRASS	1	1	16 Oct	16 Oct
73.008	<i>Chrysodeixis chalcites</i>	GOLDEN TWIN-SPOT	1	1	29 Sep	29 Sep
73.009	<i>Chrysodeixis acuta</i>	TUNBRIDGE WELLS GEM	1	1	24 Oct	24 Oct
73.012	<i>Diachrysia chrysitis</i>	BURNISHED BRASS	390	566	18 May	31 Oct

<i>Code</i>	<i>Taxon</i>	<i>Vernacular</i>	<i>Records</i>	<i>Individuals</i>	<i>Earliest</i>	<i>Latest</i>
73.015	<i>Autographa gamma</i>	SILVER Y	713	1403	16 Mar	31 Dec
73.016	<i>Autographa pulchrina</i>	BEAUTIFUL GOLDEN Y	25	40	19 May	27 Jul
73.017	<i>Autographa jota</i>	PLAIN GOLDEN Y	91	140	31 May	06 Aug
73.022	<i>Plusia festucae</i>	GOLD SPOT	68	82	16 May	25 Oct
73.024	<i>Deltote pygarga</i>	MARbled WHITE SPOT	169	415	16 May	19 Sep
73.026	<i>Deltote uncula</i>	SILVER HOOK	5	6	20 May	28 Jul
73.031	<i>Tyta luctuosa</i>	FOUR-SPOTTED	26	128	14 Jun	07 Aug
73.032	<i>Colocasia coryli</i>	NUT-TREE TUSSOCK	387	672	09 Mar	17 Aug
73.033	<i>Diloba caeruleocephala</i>	FIGURE OF EIGHT	5	5	10 Oct	18 Oct
73.034	<i>Moma alpium</i>	SCARCE MERVEILLE DU JOUR	4	5	06 Jun	03 Jul
73.036	<i>Acronicta alni</i>	ALDER MOTH	36	43	18 May	24 Jun
73.037	<i>Acronicta tridens</i>	DARK DAGGER	1	1	29 Sep	29 Sep
73.039	<i>Acronicta aceris</i>	SYCAMORE	59	74	06 Jun	29 Jul
73.040	<i>Acronicta leporina</i>	MILLER	60	72	17 May	13 Aug
73.045	<i>Acronicta rumicis</i>	KNOT GRASS	242	309	12 Apr	27 Sep
73.046	<i>Subacronicta megacephala</i>	POPLAR GREY	111	147	14 May	13 Aug
73.047	<i>Craniophora ligustri</i>	CORONET	381	1011	17 May	05 Sep
73.050	<i>Cucullia absinthii</i>	WORMWOOD	5	7	18 Jul	29 Jul
73.052	<i>Cucullia umbratica</i>	SHARK	51	55	17 May	17 Aug
73.053	<i>Cucullia chamomillae</i>	CHAMOMILE SHARK	4	4	28 Mar	30 May
73.058	<i>Cucullia verbasci</i>	MULLEIN	27	28	30 Mar	10 Jun
73.061	<i>Stilbia anomala</i>	ANOMALOUS	1	1	01 Sep	01 Sep
73.062	<i>Amphipyra pyramidea</i>	COPPER UNDERWING	13	17	30 Jul	30 Sep
73.063	<i>Amphipyra berbera</i>	SVENSSON'S COPPER UNDERWING	5	6	15 Aug	23 Sep
73.064	<i>Amphipyra tragopoginis</i>	MOUSE MOTH	56	85	18 Jul	23 Sep
73.065	<i>Asteroscopus sphinx</i>	SPRAWLER	2	2	19 Nov	22 Nov
73.068	<i>Allophyes oxyacanthae</i>	GREEN-BRINDLED CRESCENT	128	269	27 Sep	08 Nov
73.069	<i>Xylocampa areola</i>	EARLY GREY	356	1057	17 Jan	28 Nov



<i>Code</i>	<i>Taxon</i>	<i>Vernacular</i>	<i>Records</i>	<i>Individuals</i>	<i>Earliest</i>	<i>Latest</i>
73.070	<i>Pyrrhia umbra</i>	<b>BORDERED SALLOW</b>	51	109	21 Apr	04 Sep
73.074	<i>Heliothis peltigera</i>	<b>BORDERED STRAW</b>	9	9	08 Jun	08 Aug
73.076	<i>Helicoverpa armigera</i>	<b>SCARCE BORDERED STRAW</b>	44	84	03 Aug	03 Nov
73.082	<i>Cryphia algae</i>	<b>TREE-LICHEN BEAUTY</b>	4	4	21 Jul	08 Aug
73.084	<i>Bryophila domestica</i>	<b>MARbled BEAUTY</b>	42	52	29 Jun	24 Sep
73.085	<i>Nyctobrya muralis</i>	<b>MARbled GREEN</b>	135	224	28 Jun	19 Sep
73.087	<i>Spodoptera exigua</i>	<b>SMALL MOTTLED WILLOW</b>	11	16	18 Aug	21 Nov
73.092	<i>Caradrina morpheus</i>	<b>MOTTLED RUSTIC</b>	281	527	15 May	02 Oct
73.093	<i>Caradrina kadenii</i>	<b>CLANCY'S RUSTIC</b>	4	4	27 Sep	11 Oct
73.095	<i>Caradrina clavipalpis</i>	<b>PALE MOTTLED WILLOW</b>	299	542	18 Mar	29 Oct
73.099	<i>Hoplodrina ambigua</i>	<b>VINE'S RUSTIC</b>	681	2307	01 May	02 Nov
73.100	<i>Chilodes maritima</i>	<b>SILKY WAINSCOT</b>	11	16	11 Jun	29 Sep
73.101	<i>Charanyca trigrammica</i>	<b>TREBLE LINES</b>	285	1097	28 Apr	25 Jun
73.102	<i>Rusina ferruginea</i>	<b>BROWN RUSTIC</b>	75	125	16 May	07 Jul
73.105	<i>Dypterygia scabriuscula</i>	<b>BIRD'S WING</b>	37	52	01 Jun	24 Jul
73.107	<i>Mormo maura</i>	<b>OLD LADY</b>	32	36	05 Jul	13 Sep
73.109	<i>Thalpophila matura</i>	<b>STRAW UNDERWING</b>	71	126	29 Jul	12 Sep
73.113	<i>Phlogophora meticulosa</i>	<b>ANGLE SHADES</b>	426	1177	07 Jan	31 Dec
73.114	<i>Euplexia lucipara</i>	<b>SMALL ANGLE SHADES</b>	116	134	01 May	19 Sep
73.119	<i>Helotropha leucostigma</i>	<b>CRESCENT</b>	8	9	01 Jul	02 Sep
73.120	<i>Eremobia ochroleuca</i>	<b>DUSKY SALLOW</b>	63	115	02 Jul	06 Aug
73.121	<i>Gortyna flavago</i>	<b>FROSTED ORANGE</b>	59	69	26 Aug	23 Oct
73.123	<i>Hydraecia micacea</i>	<b>ROSY RUSTIC</b>	260	408	17 Jul	01 Nov
73.128	<i>Amphipoea oculatea</i>	<b>EAR MOTH</b>	1	1	14 Jul	14 Jul
73.131	<i>Luperina testacea</i>	<b>FLOUNCED RUSTIC</b>	388	1719	12 Jul	14 Oct
73.134	<i>Rhizedra lutosa</i>	<b>LARGE WAINSCOT</b>	44	58	01 Aug	31 Oct
73.136	<i>Nonagria typhae</i>	<b>BULRUSH WAINSCOT</b>	17	18	18 Jul	29 Oct
73.137	<i>Arenostola phragmitidis</i>	<b>FEN WAINSCOT</b>	14	15	11 Jul	26 Jul

<i>Code</i>	<i>Taxon</i>	<i>Vernacular</i>	<i>Records</i>	<i>Individuals</i>	<i>Earliest</i>	<i>Latest</i>
73.139	<i>Lenisa geminipuncta</i>	TWIN-SPOTTED WAINSCOT	7	16	20 Jul	25 Jul
73.141	<i>Archanara dissoluta</i>	BROWN-VEINED WAINSCOT	9	13	16 Jul	06 Aug
73.142	<i>Coenobia rufa</i>	SMALL RUFOUS	21	40	19 Jun	27 Aug
73.144	<i>Denticucullus pygmina</i>	SMALL WAINSCOT	35	42	05 Jul	30 Sep
73.145	<i>Photedes fluxa</i>	MERE WAINSCOT	2	2	25 Jul	25 Jul
73.147	<i>Photedes minima</i>	SMALL DOTTED BUFF	31	41	14 Jun	07 Aug
73.148	<i>Photedes morrisii</i>	MORRIS'S WAINSCOT	5	5	02 Jun	12 Jul
73.151	<i>Globia sparganii</i>	WEBB'S WAINSCOT	9	10	20 Jul	04 Sep
73.154	<i>Apamea remissa</i>	DUSKY BROCADE	88	115	29 May	22 Aug
73.155	<i>Apamea epomidion</i>	CLOUDED BRINDLE	85	115	06 Jun	24 Jul
73.156	<i>Apamea crenata</i>	CLOUDED-BORDERED BRINDLE	118	156	28 Apr	30 Jul
73.157	<i>Apamea anceps</i>	LARGE NUTMEG	7	20	31 May	19 Jun
73.158	<i>Apamea sordens</i>	RUSTIC SHOULDER-KNOT	160	332	17 Apr	24 Jul
73.159	<i>Apamea unanimitis</i>	SMALL CLOUDED BRINDLE	19	23	12 May	22 Jul
73.160	<i>Apamea scolopacina</i>	SLENDER BRINDLE	45	74	27 Jun	30 Jul
73.162	<i>Apamea monoglypha</i>	DARK ARCHES	812	5653	15 May	31 Oct
73.163	<i>Apamea lithoxylaea</i>	LIGHT ARCHES	104	133	29 May	01 Aug
73.164	<i>Apamea sublustris</i>	REDDISH LIGHT ARCHES	13	58	18 Jun	14 Jul
73.168	<i>Lateroligia ophiogramma</i>	DOUBLE LOBED	32	35	28 Jun	09 Aug
73.169	<i>Mesapamea secalis</i>	COMMON RUSTIC	13	20	03 Jul	19 Aug
73.170	<i>Mesapamea didyma</i>	LESSER COMMON RUSTIC	1	1	19 Aug	19 Aug
73.171	<i>Litoligia literosa</i>	ROSY MINOR	54	99	02 Jul	05 Sep
73.172	<i>Mesoligia furuncula</i>	CLOAKED MINOR	98	128	07 Jun	08 Sep
73.173	<i>Oligia strigilis</i>	MARbled MINOR	8	8	25 Jun	03 Jul
73.174	<i>Oligia latruncula</i>	TAWNY MARbled MINOR	2	2	27 Jun	03 Jul
73.175	<i>Oligia versicolor</i>	RUFOUS MINOR	1	1	03 Jul	03 Jul
73.176	<i>Oligia fasciuncula</i>	MIDDLE-BARRED MINOR	84	132	26 May	22 Aug
73.178	<i>Leucochlaena oditis</i>	BEAUTIFUL GOTHIC	15	22	05 Aug	18 Oct

<i>Code</i>	<i>Taxon</i>	<i>Vernacular</i>	<i>Records</i>	<i>Individuals</i>	<i>Earliest</i>	<i>Latest</i>
73.179	<i>Tiliacea citrigo</i>	ORANGE SALLOW	11	13	05 Sep	01 Oct
73.180	<i>Tiliacea aurago</i>	BARRED SALLOW	90	204	10 Sep	31 Oct
73.181	<i>Xanthia togata</i>	PINK-BARRED SALLOW	44	70	01 Sep	28 Oct
73.182	<i>Cirrhia icteritia</i>	SALLOW	70	105	10 Sep	29 Oct
73.183	<i>Cirrhia gilvago</i>	DUSKY-LEMON SALLOW	1	1	30 Sep	30 Sep
73.186	<i>Agrochola lychnidis</i>	BEADED CHESTNUT	264	1457	10 Sep	21 Nov
73.187	<i>Agrochola litura</i>	BROWN-SPOT PINION	31	52	13 Sep	14 Oct
73.188	<i>Agrochola helvola</i>	FLOUNCED CHESTNUT	2	2	13 Oct	16 Oct
73.189	<i>Agrochola lota</i>	RED-LINE QUAKER	122	202	27 Sep	21 Nov
73.190	<i>Agrochola macilenta</i>	YELLOW-LINE QUAKER	60	93	27 Sep	18 Dec
73.191	<i>Agrochola haematidea</i>	SOUTHERN CHESTNUT	1	1	14 Oct	14 Oct
73.192	<i>Agrochola circellaris</i>	BRICK	43	79	01 Oct	28 Nov
73.193	<i>Omphaloscelis lunosa</i>	LUNAR UNDERWING	383	3846	28 Aug	01 Nov
73.194	<i>Conistra vaccinii</i>	CHESTNUT	141	391	Unavailable	Unavailable
73.195	<i>Conistra ligula</i>	DARK CHESTNUT	39	45	Unavailable	Unavailable
73.197	<i>Conistra rubiginea</i>	DOTTED CHESTNUT	23	25	Unavailable	Unavailable
73.200	<i>Lithophane semibrunnea</i>	TAWNY PINION	8	10	Unavailable	Unavailable
73.201	<i>Lithophane socia</i>	PALE PINION	67	81	Unavailable	Unavailable
73.202	<i>Lithophane ornitopus</i>	GREY SHOULDER-KNOT	25	31	Unavailable	Unavailable
73.206	<i>Lithophane leautieri</i>	BLAIR'S SHOULDER-KNOT	103	200	01 Oct	19 Nov
73.209	<i>Xylena vetusta</i>	RED SWORD-GRASS	5	5	Unavailable	Unavailable
73.210	<i>Eupsilia transversa</i>	SATELLITE	58	64	Unavailable	Unavailable
73.212	<i>Ipimorpha retusa</i>	DOUBLE KIDNEY	8	10	03 Jul	31 Jul
73.213	<i>Ipimorpha subtusa</i>	OLIVE	7	7	17 Jul	31 Jul
73.216	<i>Cosmia trapezina</i>	DUN-BAR	171	245	23 Jun	05 Sep
73.217	<i>Cosmia pyralina</i>	LUNAR-SPOTTED PINION	10	14	03 Jul	29 Jul
73.219	<i>Atethmia centrigo</i>	CENTRE-BARRED SALLOW	55	79	31 Aug	31 Oct
73.220	<i>Brachylomia viminalis</i>	MINOR SHOULDER-KNOT	11	18	17 Jun	25 Jul

<i>Code</i>	<i>Taxon</i>	<i>Vernacular</i>	<i>Records</i>	<i>Individuals</i>	<i>Earliest</i>	<i>Latest</i>
73.221	<i>Parastichtis suspecta</i>	SUSPECTED	6	8	30 Jun	26 Jul
73.222	<i>Apterogenum ypsilon</i>	DINGY SHEARS	8	9	06 Jun	10 Jul
73.223	<i>Dryobota labecula</i>	OAK RUSTIC	14	53	19 Oct	21 Nov
73.224	<i>Griposia aprilina</i>	MERVELLE DU JOUR	35	47	28 Sep	12 Nov
73.225	<i>Dryobotodes eremita</i>	BRINDLED GREEN	14	17	18 Sep	22 Oct
73.227	<i>Dryobotodes tenebrosa</i>	SOMBRE BROCADE	2	2	18 Oct	18 Oct
73.229	<i>Trigonophora flammea</i>	FLAME BROCADE	21	55	29 Sep	01 Nov
73.230	<i>Aporophyla australis</i>	FEATHERED BRINDLE	32	346	12 Sep	11 Oct
73.231	<i>Aporophyla lutulenta</i>	DEEP-BROWN DART	3	3	27 Sep	30 Sep
73.233	<i>Aporophyla nigra</i>	BLACK RUSTIC	289	924	10 Sep	20 Nov
73.234	<i>Dasypolia templi</i>	BRINDLED OCHRE	5	11	10 Apr	29 Oct
73.235	<i>Polymixis lichenea</i>	FEATHERED RANUNCULUS	116	313	08 Jun	17 Nov
73.237	<i>Polymixis flavicineta</i>	LARGE RANUNCULUS	13	15	19 Sep	26 Oct
73.241	<i>Panolis flammea</i>	PINE BEAUTY	39	52	08 Mar	18 May
73.242	<i>Orthosia incerta</i>	CLOUDED DRAB	353	1252	25 Feb	26 May
73.243	<i>Orthosia miniosa</i>	BLOSSOM UNDERWING	1	1	01 Apr	01 Apr
73.244	<i>Orthosia cerasi</i>	COMMON QUAKER	604	6619	Unavailable	Unavailable
73.245	<i>Orthosia cruda</i>	SMALL QUAKER	233	1366	06 Mar	16 May
73.247	<i>Orthosia gracilis</i>	POWDERED QUAKER	110	154	26 Mar	16 May
73.248	<i>Orthosia opima</i>	NORTHERN DRAB	2	2	02 Apr	19 Apr
73.249	<i>Orthosia gothica</i>	HEBREW CHARACTER	755	5977	Unavailable	Unavailable
73.250	<i>Anorthoa munda</i>	TWIN-SPOTTED QUAKER	138	385	08 Mar	28 Apr
73.252	<i>Tholera cespitis</i>	HEDGE RUSTIC	26	32	23 Aug	28 Sep
73.253	<i>Tholera decimalis</i>	FEATHERED GOTHIC	69	200	26 Aug	27 Sep
73.254	<i>Cerapteryx graminis</i>	ANTLER MOTH	3	3	20 Jul	12 Aug
73.255	<i>Anarta trifolii</i>	NUTMEG	23	24	16 Apr	08 Sep
73.257	<i>Anarta myrtilli</i>	BEAUTIFUL YELLOW UNDERWING	22	44	16 May	29 Jul
73.261	<i>Polia nebulosa</i>	GREY ARCHES	49	58	19 May	24 Jul

<i>Code</i>	<i>Taxon</i>	<i>Vernacular</i>	<i>Records</i>	<i>Individuals</i>	<i>Earliest</i>	<i>Latest</i>
73.263	<i>Lacanobia w-latinum</i>	<b>LIGHT BROCADE</b>	58	83	05 May	19 Jun
73.264	<i>Lacanobia thalassina</i>	<b>PALE-SHOULDERED BROCADE</b>	15	36	07 May	17 Jul
73.265	<i>Lacanobia contigua</i>	<b>BEAUTIFUL BROCADE</b>	12	15	06 Jun	11 Jul
73.266	<i>Lacanobia suasa</i>	<b>DOG'S TOOTH</b>	5	5	05 Jul	13 Aug
73.267	<i>Lacanobia oleracea</i>	<b>BRIGHT-LINE BROWN-EYE</b>	799	2695	14 Apr	08 Nov
73.268	<i>Lacanobia splendens</i>	<b>SPLENDID BROCADE</b>	6	10	18 Jul	26 Jul
73.270	<i>Melanchra persicariae</i>	<b>DOT MOTH</b>	206	448	22 May	05 Sep
73.271	<i>Ceramica pisi</i>	<b>BROOM MOTH</b>	16	20	31 May	14 Oct
73.273	<i>Hada plebeja</i>	<b>SHEARS</b>	65	155	13 May	31 Aug
73.274	<i>Mamestra brassicae</i>	<b>CABBAGE MOTH</b>	121	134	20 May	27 Oct
73.276	<i>Sideridis rivularis</i>	<b>CAMPION</b>	18	18	08 Jun	22 Aug
73.279	<i>Hecatera bicolorata</i>	<b>BROAD-BARRED WHITE</b>	10	10	20 May	02 Sep
73.281	<i>Hadena bicruris</i>	<b>LYCHNIS</b>	143	164	24 Apr	03 Sep
73.284	<i>Hadena albimacula</i>	<b>WHITE SPOT</b>	1	1	13 May	13 May
73.286	<i>Hadena perplexa</i>	<b>TAWNY SHEARS</b>	13	20	21 Apr	03 Sep
73.288	<i>Mythimna turca</i>	<b>DOUBLE LINE</b>	1	1	17 Jun	17 Jun
73.289	<i>Mythimna pudorina</i>	<b>STRIPED WAINSCOT</b>	21	77	16 Jun	28 Jul
73.290	<i>Mythimna conigera</i>	<b>BROWN-LINE BRIGHT-EYE</b>	55	160	01 Jun	05 Sep
73.291	<i>Mythimna favicolor</i>	<b>MATHEW'S WAINSCOT</b>	1	1	21 Jul	21 Jul
73.291	<i>Mythimna pallens</i>	<b>COMMON WAINSCOT</b>	440	820	16 May	19 Oct
73.293	<i>Mythimna impura</i>	<b>SMOKY WAINSCOT</b>	370	1120	27 May	19 Sep
73.294	<i>Mythimna straminea</i>	<b>SOUTHERN WAINSCOT</b>	21	28	08 Jun	22 Aug
73.295	<i>Mythimna vitellina</i>	<b>DELICATE</b>	119	167	06 Jun	14 Nov
73.296	<i>Mythimna unipuncta</i>	<b>AMERICAN WAINSCOT OR WHITE-SPECK</b>	4	8	10 Apr	29 Oct
73.297	<i>Mythimna albipuncta</i>	<b>WHITE-POINT</b>	353	980	04 May	31 Oct
73.298	<i>Mythimna ferrago</i>	<b>CLAY</b>	324	635	03 Jun	19 Sep
73.299	<i>Mythimna litoralis</i>	<b>SHORE WAINSCOT</b>	8	62	16 Jun	28 Jul
73.300	<i>Mythimna l-album</i>	<b>L-ALBUM WAINSCOT</b>	120	224	21 May	30 Oct

<b>Code</b>	<b>Taxon</b>	<b>Vernacular</b>	<b>Records</b>	<b>Individuals</b>	<b>Earliest</b>	<b>Latest</b>
73.301	<i>Leucania comma</i>	SHOULDER-STRIPED WAINSCOT	93	213	21 May	06 Aug
73.302	<i>Leucania obsoleta</i>	OBSCURE WAINSCOT	13	16	03 Jun	16 Jul
73.304	<i>Leucania loreyi</i>	COSMOPOLITAN	9	9	22 Aug	31 Oct
73.307	<i>Peridroma saucia</i>	PEARLY UNDERWING	98	126	24 May	25 Nov
73.314	<i>Euxoa nigricans</i>	GARDEN DART	1	1	16 Jul	16 Jul
73.316	<i>Agrotis cinerea</i>	LIGHT FEATHERED RUSTIC	17	35	29 Apr	07 Jun
73.317	<i>Agrotis exclamationis</i>	HEART AND DART	1107	10706	01 May	15 Nov
73.319	<i>Agrotis segetum</i>	TURNIP MOTH	109	131	08 Mar	19 Nov
73.320	<i>Agrotis clavis</i>	HEART AND CLUB	303	1259	24 May	27 Oct
73.322	<i>Agrotis vestigialis</i>	ARCHER'S DART	2	6	01 Sep	03 Sep
73.323	<i>Agrotis ripae</i>	SAND DART	6	6	16 Jun	21 Jul
73.324	<i>Agrotis trux</i>	CRESCENT DART	22	74	19 Jun	07 Aug
73.325	<i>Agrotis puta</i>	SHUTTLE-SHAPED DART	840	1944	04 Apr	08 Nov
73.327	<i>Agrotis ipsilon</i>	DARK SWORD-GRASS	270	459	06 Mar	25 Nov
73.328	<i>Axylia putris</i>	FLAME	506	1796	30 Apr	17 Oct
73.329	<i>Ochropleura plecta</i>	FLAME SHOULDER	1343	5805	30 Mar	16 Nov
73.332	<i>Diarsia brunnea</i>	PURPLE CLAY	108	234	09 Jun	17 Jul
73.333	<i>Diarsia mendica</i>	INGRAILED CLAY	292	759	13 May	29 Aug
73.334	<i>Diarsia rubi</i>	SMALL SQUARE-SPOT	749	4330	14 May	01 Oct
73.336	<i>Cerastis rubricosa</i>	RED CHESTNUT	69	118	07 Mar	09 May
73.338	<i>Lycophotia porphyrea</i>	TRUE LOVER'S KNOT	140	500	12 May	06 Sep
73.342	<i>Noctua pronuba</i>	LARGE YELLOW UNDERWING	1510	11417	28 Apr	22 Nov
73.343	<i>Noctua fimbriata</i>	BROAD-BORDERED YELLOW UNDERWING	219	292	14 Jun	28 Oct
73.345	<i>Noctua comes</i>	LESSER YELLOW UNDERWING	479	990	19 May	19 Nov
73.346	<i>Noctua interjecta</i>	LEAST YELLOW UNDERWING	72	102	02 Jul	07 Sep
73.347	<i>Noctua janthina</i>	LANGMAID'S YELLOW UNDERWING	1	1	30 Jun	30 Jun
73.348	<i>Noctua janthe</i>	LESSER BROAD-BORDERED YELLOW UNDERWING	583	2947	23 Jun	30 Oct
73.352	<i>Anaplectoides prasina</i>	GREEN ARCHES	44	53	18 May	18 Oct

<i>Code</i>	<i>Taxon</i>	<i>Vernacular</i>	<i>Records</i>	<i>Individuals</i>	<i>Earliest</i>	<i>Latest</i>
73.353	<i>Xestia baja</i>	<b>DOTTED CLAY</b>	1	1	30 Jul	30 Jul
73.355	<i>Xestia castanea</i>	<b>NEGLECTED RUSTIC</b>	5	9	01 Sep	15 Sep
73.356	<i>Xestia agathina</i>	<b>HEATH RUSTIC</b>	17	23	28 Jul	29 Sep
73.357	<i>Xestia xanthographa</i>	<b>SQUARE-SPOT RUSTIC</b>	638	3685	27 May	29 Oct
73.358	<i>Xestia sexstrigata</i>	<b>SIX-STRIPED RUSTIC</b>	125	450	01 Jun	18 Sep
73.359	<i>Xestia c-nigrum</i>	<b>SETACEOUS HEBREW CHARACTER</b>	1035	4197	05 May	19 Nov
73.361	<i>Xestia triangulum</i>	<b>DOUBLE SQUARE-SPOT</b>	305	568	16 May	01 Sep
73.365	<i>Eugnorisma glareosa</i>	<b>AUTUMNAL RUSTIC</b>	12	19	18 Sep	15 Oct
73.368	<i>Naenia typica</i>	<b>GOTHIC</b>	11	11	19 Jun	06 Aug
74.002	<i>Meganola albula</i>	<b>KENT BLACK ARCHES</b>	70	117	12 Jun	01 Oct
74.003	<i>Nola cucullatella</i>	<b>SHORT-CLOAKED MOTH</b>	40	59	13 Jun	27 Sep
74.004	<i>Nola confusalis</i>	<b>LEAST BLACK ARCHES</b>	63	75	18 Apr	24 Jun
74.007	<i>Bena bicolorana</i>	<b>SCARCE SILVER-LINES</b>	17	17	17 Jun	24 Jul
74.008	<i>Pseudoips prasinana</i>	<b>GREEN SILVER-LINES</b>	96	109	29 May	30 Jul
74.009	<i>Nycteola revayana</i>	<b>OAK NYCTEOLINE</b>	20	22	17 Mar	01 Nov
74.011	<i>Earias clorana</i>	<b>CREAM-BORDERED GREEN PEA</b>	63	86	26 May	27 Aug

## 2014 Significant Resident and Migrant Species Report

Unless stated otherwise, all records are adult moths observed at light traps. Records with vague dates, undetermined records and critical species where there is doubt are excluded (although 10km square is reported). Also excluded are species where the number of recorded 10km squares >10 and the number of records per species is >25. Sites are removed from confidential species. Where no quantity is given, a single moth is assumed. All individual counts are minimum counts.

### 3.004 *Phymatopus hecta* (Linnaeus, 1758) **GOLD SWIFT** Local

Recorded in: SY68. SY68/6187 Blackdown (SY6187); field, 28 Jun; field, 5 on 24 Jun; field, 25 Jun; field, 4 on 28 Jun; field, 29 Jun; field, 01 Jul (J Oughton).

### 50.003 *Phragmataecia castaneae* (Hübner, 1790) **REED LEOPARD** RDB2

Recorded in: SY89; SY99. SY89/8193 Briantspuddle (SY8193); 09 Jun (J D McMillan). SY99/9190 Morden Bog (SY9190); 11 Jul, leg. P H Sterling; 11 Jul, leg. P H Sterling (P H Sterling, J Oughton).

### 52.009 *Synanthedon flaviventris* (Staudinger, 1883) **SALLOW CLEARWING** Nb

Recorded in: SY88. SY88/8086 Winfrith Heath (SY8086); field, 6 larval on 30 Apr (M S Parsons).

### 54.002 *Adscita statives* (Linnaeus, 1758) **FORESTER** Local

Recorded in: ST60; ST71. ST60/6100 Lankham Bottom (ST6100); field, 03 Jul (L de Whalley). ST71/002/02 Rooksmoor (SMU 2) (ST7411); field, 01 Jun; field, 3 on 19 Jun (M S Warren). ST71/7410 Rooksmoor (ST7410); field, 19 Jun (M S Warren). ST71/7411 Rooksmoor (ST7411); field, 01 Jun; field, 06 Jun; field, 3 on 19 Jun; field, 4 on 19 Jun (M S Warren).

### 54.003 *Adscita geryon* (Hübner, [1813]) **CISTUS FORESTER** Nb

Recorded in: ST70; ST81; ST91; SY69. Norden Hill (ST7502); 2 on 15 Jun (M S Warren). ST81/8717 Fontmell Down (ST8717); field, 31 May (W G Shreeves). ST81/8818 Clubmen's Down (ST8818); field, 3 on 13 Jun (W G Shreeves). ST91/001/04 Fontmell and Melbury Downs (SMU 4) (ST9119); field, 3 on 13 Jun (J Westgate). SY69/6296 Southfield Hog Cliff, S7 (SY6296); field, 13 Jun (I Middlebrook). SY69/6297 Southfield Hog Cliff, S5 (SY6297); field, 3 on 13 Jun (I Middlebrook).

### 54.009 *Zygaena lonicerae* (Scheven, 1777) **NARROW-BORDERED FIVE-SPOT BURNET**

Recorded in: ST81; ST82; ST91; SY68; SY69. Motcombe Meadows (ST8426); field, 20 May, leg. L de Whalley (P Cooper). ST81/001/17 Fontmell and Melbury Downs (SMU 17) (ST8818); field, 05 Jun (L de Whalley). ST81/8717 Fontmell Down (ST8717); field, 8 on 05 Jun (L de Whalley). ST81/8817 Fontmell Down (ST8817); field, 10 on 05 Jun; field, 05 Jun; field, 5 on 05 Jun (L de Whalley). ST81/8818 Clubmen's Down (ST8818); field, 18 on 01 Jun; field, 5 on 31 May; field, 6 on 05 Jun (L de Whalley). ST91/9119 Melbury Down (ST9119); field, 15 Jul (L de Whalley). SY68/6780 Radipole Lake (SY6780); field, 24 Jun; field, 9 on 02 Jul (A Neilson). SY69/6199 Folly Hill (SY6199); field, 23 Jun (M S Parsons). UKBMS, Radipole (-) - S6 (SY6780); field, 31 May; field, 05 Jun; field, 12 Jun; field, 4 on 17 Jun; field, 10 on 21 Jun; field, 8 on 24 Jun; field, 3 on 02 Jul; field, 4 on 08 Jul (S Cookson).

### 54.010 *Zygaena trifolii* (Esper, 1783) **FIVE-SPOT BURNET** Local

Recorded in: ST60; ST70; ST71; ST81; ST90; ST91; SU01; SY59; SY67; SY98. Norden Hill (ST7502); 10 on 15 Jun (M S Warren). ST60/002/03 Giant Hill (SMU 3) (ST6601); field, 3 on 18 Jun (P A Pires). ST60/6100 Lankham Bottom (ST6100); field, 22 Jul (L de Whalley). ST60/6602 Cerne Abbas (ST6602); field, 3 on 18 Jun; field, 2 on 18 Jun (P A Pires). ST60/6701 Cerne Abbas (ST6701); field, 3 on 18 Jun (P A Pires). ST60/6702 Cerne Abbas (ST6702); field, 2 on 18 Jun (P A Pires). ST71/002/02 Rooksmoor (SMU 2) (ST7411); field, 2 on 19 Jun; field, 3 on 02 Jul; field, 11 Jul (M S Warren). ST71/7310 Alners Gorse (ST7310); field, 10 Jun; field, 02 Jul; field, 2 on 19 Jun; field, 19 Jun; field, 17 Jul (M S Parsons). ST71/7410 Rooksmoor (ST7410); field, 19 Jun; field, 4 on 19 Jun; field, 02 Jul (M S Warren). ST71/7411 Rooksmoor (ST7411); field, 11 Jul; field, 19 Jun; field, 28 on 19 Jun; field, 16 on 02 Jul (M S Warren). ST81/001/17 Fontmell and Melbury Downs (SMU 17) (ST8818); field, 8 on 19 Jun (W G Shreeves). ST81/001/19 Fontmell and Melbury Downs (SMU 19) (ST8817); field, 3 on 19 Jun (W G Shreeves). ST81/01 Fontmell and Melbury Downs (ST8818); field, 4 on 06 Jun; field, 15 on 13 Jun (J Westgate). ST81/8413 Hambledon Hill (ST8413); field, 09 Jun (A Branson). ST81/8716 Fontmell Magna (ST8716); field, 5 on 02 Jul (J Westgate). ST81/8717 Fontmell Down (ST8717); field, 15 larval on 31 May; field, 5 on 19 Jun (W G Shreeves). ST81/8817 Fontmell Down (ST8817); field, 5 on 19 Jun; field, 2 larval on 31 May; field, 7 larval on 31 May; field, 30 on 19 Jun; field, 8 on 19 Jun; field, 9 on 19 Jun (W G Shreeves). ST81/8818 Clubmen's Down (ST8818); field, 3 on 06 Jun; field, 16 on 13 Jun; field, 22 on 13 Jun; field, 9 on 06 Jun; field, 2 larval on 31 May; field, 29 on 19 Jun; field, 2 on 13 Jun; field, 2 on 19 Jun; field, 5 on 06 Jun (J Westgate). ST90/9602 Badbury Rings (ST9602); field, 9 on 12 Jun (J Seawright). ST91/001/04 Fontmell and Melbury Downs (SMU 4) (ST9119); field, 13 Jun; field, 14 on 13 Jun; field, 5 on 13 Jun (J Westgate). ST91/9119 Melbury Down (ST9119); field, 19 Jun (M S Parsons). ST91/9119 Melbury Wood (ST9119); field, 13 Jun (J Westgate). SY59/005 Toller Porcorum SSSI (SY5498); field, 17 Jun; field, 4 on 01 Jul (A Rosenthal). SY59/005 Toller Porcorum SSSI



- (SY5599); field, 4 on 17 Jun; field, 10 on 01 Jul (A Rosenthal). SY67/6872 Isle of Portland (SY6872); field, 11 Jun; field, 3 on 11 Jun (P Jefferies). SY67/6972 Isle of Portland (SY6972); field, 09 Jun (P Jefferies). SY98/005 Corfe Common SSSI (SY9680); 29 Jun (R Knight). UKBMS, 1019. 3 (SU0418); field, 17 Jun; field, 02 Jul (L Smith). UKBMS, 2227. 10 (SY5499); field, 4 on 17 Jun; field, 3 on 01 Jul (A Rosenthal). UKBMS, 2227. 11 (SY5499); field, 4 on 17 Jun (A Rosenthal). UKBMS, 2227. 13 (SY5498); field, 10 on 17 Jun; field, 14 on 01 Jul (A Rosenthal). UKBMS, 2227. 14 (SY5598); field, 17 Jun; field, 01 Jul (A Rosenthal). UKBMS, 2227. 2 (SY5498); field, 01 Jul (A Rosenthal). UKBMS, 2227. 3 (SY5598); field, 2 on 17 Jun; field, 8 on 01 Jul (A Rosenthal). UKBMS, 2227. 6 (SY5498); field, 4 on 17 Jun; field, 4 on 01 Jul (A Rosenthal). UKBMS, 2227. 7 (SY5498); field, 7 on 17 Jun; field, 21 on 01 Jul (A Rosenthal). UKBMS, 2227. 8 (SY5498); field, 6 on 17 Jun; field, 16 on 01 Jul (A Rosenthal). UKBMS, 2227. 9 (SY5499); field, 2 on 17 Jun; field, 01 Jul (A Rosenthal). UKBMS, 2240. 2 (SY6972); field, 2 on 09 Jun (P Jefferies). UKBMS, 2240. 3 (SY6971); field, 3 on 09 Jun (P Jefferies). UKBMS, 2242. 4 (SY6872); field, 2 on 11 Jun (P Jefferies). UKBMS, Portland Broadcroft (DBC) - S4 (SY6971); field, 09 Jun (P Jefferies). UKBMS, Portland Tout () - S2 (SY6872); field, 11 Jun (P Jefferies).
- 66.005 *Eriogaster lanestris* (Linnaeus, 1758) **SMALL EGGAR** Nb  
Recorded in: ST71; ST90; SY49; SY58; SY59; SY67; SY68; SY69; SY78; SY79; SY88. Bridport (SY4790); field, larval web on 03 Jun (M S Parsons). Fleet (SY6379); field, larval on 19 May (J Oughton). Near Coryates (SY6285); field, larval on 02 Jul (J Oughton). Owermoigne (SY7785); field, larval web on 28 May (M S Parsons). ST71/7411 Rooksmoor (ST7411); field, larval web on 10 Jun (M S Parsons). ST90/9602 Badbury Rings (ST9602); field, larval on 25 Jun (J Seawright). SY58/5088 Cogden Beach (SY5088); field, 3 larval web on 27 May; field, 3 larval web on 03 Jun (M S Parsons). SY58/5685 Abbotsbury Gardens (SY5685); field, larval on 06 May (J Oughton). SY59/5497 Powerstock Common (SY5497); field, larval web on 06 Jun (M S Parsons). SY68/6780 Radipole Lake (SY6780); field, larval web on 04 May (S Hasler). SY69/6390 Winterbourne Abbas (SY6390); field, larval web on 11 Jun (M S Parsons). SY78/7081 Bowleaze Cove (SY7081); field, larval web on 05 Apr (P Harris). SY78/7089 Dorchester (SY7089); field, larval on 20 May (M S Parsons). SY79/MT 0001 Puddletown (SY7695); 3 on 30 Mar; 31 Mar; 03 Apr (H G Wood Homer). Wool, Woodman's Cross (SY8485); field, larval web on 02 Jun (L J Hill).
- 66.006 *Lasiocampa trifolii* ([Denis & Schiffermüller], 1775) **GRASS EGGAR** Na  
Recorded in: SY78; SY88; SZ07; SZ08. Redhorn Quay (SZ0285); larval on 26 Jun, leg. K Henderson (D E Brown). SY78/7083 Weymouth (SY7083); 01 Aug (J A Newbould). SY88/005 South Dorset Coast SSSI (SY8280); field, 3 larval on 27 Apr (A O J Evans). SY88/8080 Durdle Door (SY8080); field, 24 larval on 28 May (D Maunder). SY88/8280 West Lulworth (SY8280); 30 Aug (M Bellingham). SZ07/0378 Swanage (SZ0378); indoors, 29 Jul (S Breeze).
- 69.004 *Agrius convolvuli* (Linnaeus, 1758) **CONVOLVULUS HAWK-MOTH** Migrant  
Recorded in: ST60; SU10; SY49; SY58; SY66; SY68; SY79; SZ07. ST60/6108 Leigh, Wesley House (ST6108); 31 Oct (G A Nash). SY49/MT 0002 Bothenhampton (SY4892); 10 Oct; 18 Oct; 19 Oct (M S Parsons). SY66/MT 0001 Portland (SY6868); 30 Aug; 06 Sep; 12 Sep; 13 Sep; 16 Sep; 20 Sep (M Cade). SY68/MT 0003 Weymouth (SY6784); 09 Sep (P Harris). SY68/MT 0006 Weymouth (SY6682); 09 Sep (P Harris). SY79/MT 0001 Puddletown (SY7695); 14 Sep; 25 Sep; 27 Oct (H G Wood Homer). SZ07/0277 Durlston Country Park (SZ0277); 18 Oct (S Nash). SZ07/0377 Durlston Country Park (SZ0377); 18 Oct; 27 Oct, leg. S Nash; 29 Oct (S Nash).
- 69.005 *Acherontia atropos* (Linnaeus, 1758) **DEATH'S-HEAD HAWK-MOTH** Migrant  
Recorded in: SY88; SZ07. SY88/8486 Wool (SY8486); field, 07 Oct, leg. C Pinder (G Webb). SZ07/0377 Durlston Country Park (SZ0377); 29 Oct (S Nash).
- 69.008 *Hemaris tityus* (Linnaeus, 1758) **NARROW-BORDERED BEE HAWK-MOTH** Na  
Recorded in: SY59. SY59/5397 Powerstock Common (SY5397); field, 05 May (J Oughton).
- 69.011 *Daphnis nerii* (Linnaeus, 1758) **OLEANDER HAWK-MOTH** Migrant  
Recorded in: SZ07. SZ07/0377 Durlston Country Park (SZ0377); 18 Oct (S Nash).
- 70.002 *Idaea muricata* (Hufnagel, 1767) **PURPLE-BORDERED GOLD** Nb  
Recorded in: SY99; SZ08. Studland, Brands Heath (SZ0284); field, 22 Jun (J Seawright). SY99/9190 Morden Bog (SY9190); 11 Jul, leg. P H Sterling (J Oughton, P H Sterling, M J Lawson). SY99/9191 Decoy Heath (SY9191); field, 25 Jun (W W Bown). SY99/9795 Corfe Mullen (SY9795); 03 Jul (A Fale). SZ08/002/11 Studland and Godlingston Heaths (SMU 11) (SZ0284); netted, 6 on 01 Jul (J C Winterbottom). SZ08/0284 Studland (SZ0284); field, 22 Jun (J Seawright).
- 70.003 *Idaea ochrata* (Scopoli, 1763) **BRIGHT WAVE** RDB1  
Recorded in: SY39. SY39/3693 Charmouth/MT (SY3693); 23 Jul, leg. M S Parsons (G Sell).
- 70.010 *Idaea sylvestraria* (Hübner, [1799]) **DOTTED BORDER WAVE** Nb  
Recorded in: SY89; SY99. SY89/8893 Oak Hill (SY8893); 07 Jul; 16 Jul (M S Parsons). SY99/9190 Morden Bog

(SY9190); 4 on 11 Jul, leg. P H Sterling; 11 Jul, leg. P H Sterling; 2 on 11 Jul, leg. P H Sterling (J Oughton, P H Sterling, M J Lawson).

70.015 *Idaea emarginata* (Linnaeus, 1758) **SMALL SCALLOP** Local

Recorded in: ST61; ST71; SY99; SZ08; SZ09. Lytchett Bay, Lytchett Way (SY9792); 26 Jul (N J Hull). Merley, Sopwith Crescent (SZ0298); 19 Jul (R W Steedman). ST61/6610 Ryewater Farm (ST6610); 4 on 17 Jul (W T Franklin). ST71/7310 Alners Gorse (ST7310); 2 on 25 Jul, leg. J Oughton (J Oughton, N Spring). Studland, Aspen Wood (SZ0383); 07 Jul (J C Winterbottom).

70.017 *Idaea degeneraria* (Hübner, [1799]) **PORTLAND RIBBON WAVE** RDB3

Recorded in: SY39; SY67. Portland, Grove (SY6972); 05 Sep (M Cade). Stonebarrow (SY3893); 05 Sep (M A Ridge). SY67/6872 Portland (SY6872); field, 15 Jul (J Oughton). SY67/6970 Cheyne Weare, Portland (SY6970); field, 2 on 20 Jun (M S Parsons).

70.020 *Scopula nigropunctata* (Hufnagel, 1767) **SUB-ANGLED WAVE** RDB2

Recorded in: SY66. SY66/MT 0001 Portland (SY6868); 19 Jul (M Cade).

70.025 *Scopula immutata* (Linnaeus, 1758) **LESSER CREAM WAVE** Local

Recorded in: SU00; SY89; SY98; SY99. Lytchett Bay, Lytchett Way (SY9792); 26 Jul (N J Hull). SU00/0609 Hedgerow (SU0609); 09 Jul (M Lowe). SY89/8193 Briantspuddle (SY8193); 16 Jul (J D McMillan). SY99/9190 Morden Bog (SY9190); 11 Jul, leg. P H Sterling (J Oughton, P H Sterling, M J Lawson). Wareham, Wyatts Lane (SY9287); 22 Jul (B D D Young).

70.028 *Scopula emutaria* (Hübner, [1809]) **ROSY WAVE** Nb

Recorded in: SY99; SZ08. Lytchett Bay, Lytchett Way (SY9792); 26 Jul (N J Hull). Studland, Zero Ridge North (SZ0485); 23 Jun; 10 on 23 Jun (J C Winterbottom). SY99/9190 Morden Bog (SY9190); 11 Jul, leg. P H Sterling; 2 on 11 Jul, leg. P H Sterling (J Oughton, P H Sterling, M J Lawson).

70.030 *Cyclophora pendularia* (Clerck, 1759) **DINGY MOCHA** RDB3

Recorded in: SY66; SY89; SY99. SY66/MT 0001 Portland (SY6868); 24 Jul (M Cade). SY89/8193 Briantspuddle (SY8193); 01 Aug (J D McMillan). SY99/9190 Morden Bog (SY9190); 11 Jul, leg. P H Sterling (J Oughton, P H Sterling, M J Lawson).

70.033 *Cyclophora pupillaria* (Hübner, [1799]) **BLAIR'S MOCHA** Migrant

Recorded in: SY49; SY67; SY78. Broadmayne, Spring Gardens (SY7387); 28 Oct (P Bruce-Jones). SY49/MT 0002 Bothenhampton (SY4892); 31 Oct (M S Parsons). SY67/6676 Weymouth (SY6676); 05 Sep (D Foot).

70.034 *Cyclophora ruficiliaria* (Herrich-Schäffer, 1855) **JERSEY MOCHA** Channel Islands only

Recorded in: SY67. SY67/6870 Isle of Portland (SY6870); 14 Aug, leg. M C Townsend; 14 Aug (D Saunders).

70.043 *Scotopteryx bipunctaria* ([Denis & Schiffermüller], 1775) **CHALK CARPET** Nb

Recorded in: ST81; SY39; SY48; SY67; SY68; SY88. Binbarrow - S2 (SY4988); field, 4 on 17 Jul; field, 3 on 22 Jul; field, 2 on 29 Jul; field, 04 Aug (T Brereton). Portland, King Barrow Quarry (SY6972); field, 2 on 16 Jul (M S Parsons). ST81/003/02 Hod and Hambleton Hills (SMU 2) (ST8412); 20 Aug (W W Bown). ST81/8412 Hambleton Hill (ST8412); field, 2 on 13 Aug; field, 21 Jul; field, 2 on 21 Jul (J A Newbould). ST81/8818 Clubmen's Down (ST8818); field, 22 Jul; field, 19 Aug (W G Shreeves). SY39/3693 Charmouth/MT (SY3693); 2 on 24 Jul; 07 Aug; 16 Aug (G Sell). SY48/4988 Burton Bradstock (SY4988); field, 17 Jul; field, 22 Jul; field, 04 Aug; field, 14 on 17 Jul (T Brereton). SY67/002/39 Isle of Portland (SMU 39) (SY6970); field, 06 Jul (M Cade). SY67/002/49 Isle of Portland (SMU 49) (SY6872); field, 2 on 15 Jul (J Oughton). SY67/6973 High Angle Battery, Portland (SY6973); field, 16 Jul (M S Parsons). SY68/6085 Portesham (SY6085); 04 Aug; field, 14 Aug (J Oughton). SY88/8280 West Lulworth (SY8280); field, 04 Sep (M Bellingham). UKBMS, Binbarrow - S2 (SY4988); field, 4 on 17 Jul (T Brereton).

70.052 *Xanthorhoe ferrugata* (Clerck, 1759) **DARK-BARRED TWIN-SPOT CARPET**

Recorded in: SU00; SU10; SY58; SY67; SY68; SZ09; SZ19. Sandy Lane Horton Common Three Legged Cross (SU0706); 07 Jun (D J Evans). SY58/5784 Abbotsbury (SY5784); 06 Aug, leg. J Oughton (J Oughton, M Hetherington). SY67/6676 Weymouth (SY6676); 29 May; 21 Jul; 09 Sep (D Foot). SY67/6870 Isle of Portland (SY6870); 29 Jul (D Saunders). SY67/6970 Isle of Portland (SY6970); 29 Jul (M Cade). SY68/6085 Portesham (SY6085); 18 Aug (J Oughton).

70.062 *Epirrhoe rivata* (Hübner, [1813]) **WOOD CARPET** Local

Recorded in: SY39; SY66; SY67; SY79. Mandeville Close, Weymouth (SY6577); 29 Jul (I Middlebrook). SY39/3693 Charmouth/MT (SY3693); 07 Jun; 15 Jun; 3 on 19 Jun; 22 Jun; 25 Jun; 09 Jul (G Sell). SY66/MT 0001 Portland

(SY6868); 10 Jul (M Cade). SY79/MT 0001 Puddletown (SY7695); 2 on 15 Jun; 20 Jun; 02 Jul; 4 on 06 Jul; 2 on 16 Jul; 18 Jul; 23 Jul; 2 on 26 Jul (H G Wood Homer).

70.063 *Epirrhoe galiata* ([Denis & Schiffermüller], 1775) **GALIUM CARPET** Local

Recorded in: SY39; SY66; SY67; SY68; SY79; SY97; SY98. Dorset (SY9287); 05 Jul (B D D Young). Portland, King Barrow Quarry (SY6972); field, 16 Jul (M S Parsons). Stonebarrow (SY3893); 05 Sep (M A Ridge). Stonebarrow Hill (SY3893); 05 Sep (R Fleetwood). SY66/6869 Culverwell, Portland (SY6869); 03 Sep (M C Townsend). SY67/6870 Isle of Portland (SY6870); 02 Sep; 04 Sep (D Saunders). SY67/6872 Portland (SY6872); field, 15 Jul (J Oughton). SY67/6973 High Angle Battery, Portland (SY6973); field, 2 on 16 Jul (M S Parsons). SY67/MT 0005 Portland (SY6871); 09 Jun; 3 on 07 Jul; 26 Jul; 4 on 05 Sep (J Williamson). SY68/6085 Portesham (SY6085); 06 Aug; 15 Aug; 26 Aug; 03 Sep; 2 on 09 Sep; netted, 15 May (J Oughton). SY68/MT 0003 Weymouth (SY6784); 06 Aug (P Harris). SY79/MT 0001 Puddletown (SY7695); 11 Sep (H G Wood Homer). Worth Matravers, Car Park (toilet block) (SY9777); field, 2 on 27 Aug (A Millar).

70.064 *Euphyia biangulata* (Haworth, 1809) **CLOAKED CARPET** Nb

Recorded in: SY88; SY89. SY88/MT 0001 East Lulworth (SY8583); 23 Jul (L J Hill). SY89/8193 Briantspuddle (SY8193); 12 Jul (J D McMillan).

70.069 *Pelurga comitata* (Linnaeus, 1758) **DARK SPINACH**

Recorded in: SY66; SY67; SZ19. SY66/MT 0001 Portland (SY6868); 2 on 17 Jul; 23 Jul; 24 Jul; 25 Jul; 26 Jul; 2 on 27 Jul; 2 on 28 Jul (M Cade). SY67/6970 Freshwater Bay, Portland (SY6970); 16 Jul (M Cade).

70.070 *Larentia clavaria* (Haworth, 1809) **MALLOW**

Recorded in: ST60; SY49; SY58; SY66; SY67; SY89; SZ19. ST60/6108 Leigh, Wesley House (ST6108); 28 Sep (G A Nash). SY49/MT 0002 Bothenhampton (SY4892); 18 Oct (M S Parsons). SY58/5387 West Bexington (SY5387); 11 Oct (D Foot). SY66/MT 0001 Portland (SY6868); 01 Oct (M Cade). SY67/6870 Isle of Portland (SY6870); 14 Oct; 15 Oct (D Saunders). SY67/MT 0005 Portland (SY6871); 02 Oct; 29 Oct (J Williamson). SY89/8193 Briantspuddle (SY8193); 30 Sep (J D McMillan).

70.076 *Hydriomena ruberata* (Freyer, [1831]) **RUDDY HIGHFLYER** Local

Recorded in: SY99; SZ08. SY99/9190 Morden Bog (SY9190); 11 Jul, leg. P H Sterling (J Oughton, P H Sterling, M J Lawson). SZ08/002/11 Studland and Godlingston Heaths (SMU 11) (SZ0383); 2 on 28 Apr, leg. J Seawright (J Seawright, J C Winterbottom).

70.092 *Eulithis mellinata* (Fabricius, 1787) **SPINACH**

Recorded in: SY99. Lytchett Bay, Lytchett Way (SY9792); 15 Aug (N J Hull).

70.098 *Dysstroma citrata* (Linnaeus, 1761) **DARK MARBLED CARPET**

Recorded in: ST91. ST91/9516 Half Hide Coppice (ST9516); 28 Jul (M Jeffes). ST91/9618 Monk's Arundell Coppice (ST9618); 30 Jul; 29 Jul (M Jeffes). ST91/9717 Cranborne Chase (ST9717); 29 Jul; 28 Aug (M Jeffes).

70.099 *Colostygia olivata* ([Denis & Schiffermüller], 1775) **BEECH-GREEN CARPET** Local

Recorded in: SY67. SY67/6872 Portland (SY6872); field, 15 Jul (J Oughton).

70.104 *Lampropteryx otregiata* (Metcalf, 1917) **DEVON CARPET** Nb

Recorded in: SY99. Lytchett Bay, Lytchett Way (SY9792); 30 May, leg. P Harris (N J Hull).

70.107 *Epirrita dilutata* ([Denis & Schiffermüller], 1775) **NOVEMBER MOTH**

Recorded in: ST90; ST91; SU00; SU01; SY68; SZ19. Ash Plantation Copse Tarrant Monkton (ST9508); 3 males on 22 Oct, gen. det. (D J Evans). Bagmans Copse Old Down Woodlands (SU0309); 2 males on 22 Oct, gen. det. (D J Evans). Brockington Beeches Drove, Brockington Down (SU0111); 3 males on 22 Oct, gen. det. (D J Evans). Crichel Lane shelterbelt Witchampton (ST9807); 3 males on 22 Oct, gen. det. (D J Evans). Haythorne Common Haythorne Horton (SU0307); 3 males on 22 Oct, gen. det. (D J Evans). Horton Wood FC Wigbeth (SU0506); 3 males on 22 Oct, gen. det. (D J Evans). Mill Hill Wood Moor Crichel (SU0008); 2 males on 22 Oct, gen. det. (D J Evans). SY68/MT 0002 Chickerell (SY6580); 23 Oct, gen. det. (C Pinder). Veiny Cheese Pond Spinney Tarrant Hinton (ST9611); 2 males on 22 Oct, gen. det. (D J Evans).

70.109 *Epirrita autumnata* (Borkhausen, 1794) **AUTUMNAL MOTH**

Recorded in: SY68. SY68/MT 0007 Weymouth (SY6982); male on 28 Oct, gen. det. ('Ricky' Lambert).

70.116 *Venusia blomeri* (Curtis, 1832) **BLOMER'S RIVULET** Nb

Recorded in: SY59. SY59/5590 Rowden Farm (SY5590); 18 Jul (N Spring).

- 70.117 *Minoa murinata* (Scopoli, 1763) **DRAB LOOPER** Nb  
Recorded in: ST90; ST91; SU01. Chetterwood (ST9608); field, 27 May (M S Parsons). ST91/9015 Stubhampton Bottom (ST9015); field, 23 on 13 May (M S Parsons). ST91/9618 Monk's Arundell Coppice (ST9618); 11 Jul (M Jeffes). SU01/001 Cranborne Chase SSSI (SU0019); field, 2 on 27 May (M S Parsons).
- 70.123 *Triphosa dubitata* (Linnaeus, 1758) **TISSUE** Local  
Recorded in: ST61. ST61/6013 Thornford (ST6013); lit window, 28 Jul, leg. P H Sterling (N J Howell).
- 70.124 *Pareulype berberata* ([Denis & Schiffermüller], 1775) **BARBERRY CARPET** RDB1  
Recorded in: ST80. Field, 9 (min) larval on 29 Aug (M S Parsons).
- 70.130 *Odezia atrata* (Linnaeus, 1758) **CHIMNEY SWEEPER**  
Recorded in: SU01; SY98. UKBMS, 1019. 4 (SU0418); field, 17 Jun (L Smith). UKBMS, 1019. 9 (SU0418); field, 02 Jul (L Smith).
- 70.131 *Mesotype didymata* (Linnaeus, 1758) **TWIN-SPOT CARPET**  
Recorded in: ST91; SY68. ST91/9910 Sovell Down (ST9910); field, 05 Jun (R W Steedman). SY68/6187 Blackdown (SY6187); field, 28 Jun; field, 03 Jul; field, 25 Jun (J Oughton).
- 70.134 *Perizoma bifaciata* (Haworth, 1809) **BARRED RIVULET** Local  
Recorded in: ST80; ST91; SY67; SY68. ST80/8304 Winterborne Stickland (ST8304); 25 Jul, leg. L J Hill (W W Bown). ST91/9516 Half Hide Coppice (ST9516); 28 Jul (M Jeffes). ST91/9618 Monk's Arundell Coppice (ST9618); 29 Jul (M Jeffes). SY67/MT 0005 Portland (SY6871); 16 Jul; 2 on 23 Jul; 26 Jul (J Williamson). SY68/MT 0003 Weymouth (SY6784); 31 Jul (P Harris).
- 70.137 *Perizoma albulata* ([Denis & Schiffermüller], 1775) **GRASS RIVULET** Local  
Recorded in: SY66; SY99; SZ07. Lytchett Bay, Lytchett Way (SY9792); 11 Jun (N J Hull). SY66/MT 0001 Portland (SY6868); 26 May (M Cade). SZ07/B001/16 Townsend (Comp 16) (SZ0278); field, 14 May (S Faulkner). SZ07/MT 0002 Swanage (SZ0278); 19 Jul (P England).
- 70.143 *Pasiphila chloerata* (Mabille, 1870) **SLOE PUG**  
Recorded in: SY68; SY78. Broadmayne, Spring Gardens (SY7387); 06 Jun (P Bruce-Jones). SY68/MT 0002 Chickerell (SY6580); 13 Jun; 15 Jun; 17 Jun; 20 Jun; 23 Jun; 26 Jun; 2 on 27 Jun; 04 Jul (C Pinder).
- 70.150 *Eupithecia linariata* ([Denis & Schiffermüller], 1775) **TOADFLAX PUG**  
Recorded in: ST40; ST80; SY59; SY66; SY67; SY79. Beaminster, Horn Hill View (ST4701); 28 Aug (S Philp). ST80/8304 Winterborne Stickland (ST8304); 03 Jun (W W Bown). SY59/5497 Kingcombe, Gray's Cottage (SY5497); 05 Jul (P Delve). SY66/6869 Culverwell, Portland (SY6869); 04 Sep (M C Townsend). SY67/6676 Weymouth (SY6676); 12 Jun; 05 Sep (D Foot). SY67/6870 Isle of Portland (SY6870); 20 Jun; 23 Jun; 14 Jul; 16 Jul; 19 Jul; 06 Aug; 05 Sep (D Saunders). SY79/MT 0001 Puddletown (SY7695); 17 Jul (H G Wood Homer).
- 70.152 *Eupithecia ultimaria* Boisduval, 1840 **CHANNEL ISLANDS PUG** Local(alien-foodplant)  
Recorded in: SY58; SY67; SY68. SY58/5388 Puncknowle (SY5388); 04 Aug (M Hetherington). SY58/5784 Abbotsbury (SY5784); 2 on 06 Aug, leg. J Oughton (J Oughton, M Hetherington). SY67/6870 Isle of Portland (SY6870); 08 Jun; 20 Jul (D Saunders). SY68/6085 Portesham (SY6085); 04 Aug (J Oughton).
- 70.153 *Eupithecia plumbeolata* (Haworth, 1809) **LEAD-COLOURED PUG** Nb  
Recorded in: ST91. ST91/9516 Half Hide Coppice (ST9516); 11 Jul; 2 on 11 Jul (M Jeffes).
- 70.161 *Eupithecia virgaureata* Doubleday, 1861 **GOLDEN-ROD PUG** Local  
Recorded in: SY68. SY68/6085 Portesham (SY6085); female on 11 Sep, gen. det. (J Oughton).
- 70.166 *Eupithecia simplicata* (Haworth, 1809) **PLAIN PUG** Local  
Recorded in: ST61; SY67; SY68. ST61/6013 Thornford (ST6013); 19 Jul, leg. P H Sterling (N J Howell). SY67/6676 Weymouth (SY6676); 20 Jul; 23 Jul; 25 Jul; 02 Aug (D Foot). SY68/MT 0006 Weymouth (SY6682); 25 Jul (P Harris).
- 70.169 *Eupithecia innotata* (Hufnagel, 1767) **ANGLE-BARRED PUG** Unconfirmed  
Recorded in: ST70; SY78. Broadmayne, Spring Gardens (SY7387); 08 Jun; 11 Jul (P Bruce-Jones). Higher Ansty (ST7603); 13 Aug (M S Warren).

- 70.181 *Eupithecia valerianata* (Hübner, [1813]) **VALERIAN PUG** Nb  
Recorded in: SY67; SY68. SY67/6676 Weymouth (SY6676); 08 Jun (D Foot). SY67/6870 Isle of Portland (SY6870); 16 May; 21 May; 26 May; 2 on 28 May; 29 May; 31 May; 10 Jun (D Saunders). SY68/6085 Portesham (SY6085); 15 Jun (J Oughton).
- 70.188 *Eupithecia succenturiata* (Linnaeus, 1758) **BORDERED PUG**  
Recorded in: SU10; SY78; SY79; SY89; SZ19. Broadmayne, Spring Gardens (SY7387); 24 Jul (P Bruce-Jones). SY79/MT 0001 Puddletown (SY7695); 10 Jul; 22 Jul; 24 Jul; 29 Jul (H G Wood Homer). SY89/8193 Briantspuddle (SY8193); 18 Jul; 2 on 23 Jul (J D McMillan).
- 70.195 *Chesias legatella* ([Denis & Schiffermüller], 1775) **STREAK**  
Recorded in: SU00; SY39. SU00/0609 Hedgerow (SU0609); 26 Oct (M Lowe). SY39/3693 Charmouth/MT (SY3693); 30 Oct (G Sell).
- 70.201 *Trichopteryx polycommata* ([Denis & Schiffermüller], 1775) **BARRED TOOTH-STRIPED** Na  
Recorded in: ST81. ST81/8818 Clubmen's Down (ST8818); netted, 29 Mar (L J Hill).
- 70.206 *Abraxas sylvata* (Scopoli, 1763) **CLOUDED MAGPIE** Local  
Recorded in: SY49; SY67; SY68; SY79; SY99; SZ08. Portland, Pennsylvania Castle (SY6971); 18 Jul (M Cade). SY49/MT 0002 Bothenhampton (SY4892); 26 Jul (M S Parsons). SY68/MT 0007 Weymouth (SY6982); 18 Jul ('Ricky' Lambert). SY79/MT 0001 Puddletown (SY7695); 15 Sep (H G Wood Homer). SY99/9794 Corfe Mullen (SY9794); 2 on 27 Aug (K Wilkinson). SZ08/0288 Brownsea Island (SZ0288); 29 Jul (C Thain).
- 70.211 *Macaria notata* (Linnaeus, 1758) **PEACOCK MOTH** Local  
Recorded in: ST91. ST91/9617 Woodcutts Common (ST9617); 30 Jul (M Jeffes). ST91/9717 Cranborne Chase (ST9717); 30 Jul (M Jeffes). ST91/9718 Witherwind Coppice (ST9718); 29 Jul; 28 Aug (M Jeffes).
- 70.218 *Chiasmia clathrata* (Linnaeus, 1758) **LATTICED HEATH**  
Recorded in: SY66; SY67; SY89; SZ07; SZ08. SY66/MT 0001 Portland (SY6868); 25 Aug (M Cade). SY67/6870 Isle of Portland (SY6870); 24 Aug; 24 Aug (D Saunders). SZ07/MT 0002 Swanage (SZ0278); 2 on 27 Aug (P England). Tonerspuddle Heath (SY8291); field, 2 on 04 May; 2 on 04 May (J D McMillan). UKBMS, 19. 14 (SZ0283); field, 2 on 29 Apr, leg. J Hurley (J Hurley et al). UKBMS, 19. 5 (SZ0284); field, 29 Apr, leg. J Hurley (J Hurley et al). UKBMS, 19. 9 (SZ0284); field, 29 Apr, leg. J Hurley (J Hurley et al).
- 70.221 *Cepphis advenaria* (Hübner, 1790) **LITTLE THORN** Nb  
Recorded in: SY88; SY89. Lodge Wood (SY8583); 20 Jun (I Middlebrook). SY88/MT 0001 East Lulworth (SY8583); 17 Jun, leg. M S Parsons; 18 Jun, leg. M S Parsons (L J Hill). SY89/8193 Briantspuddle (SY8193); 17 May; 2 on 18 May; 22 May; 23 May; 24 May; 27 May (J D McMillan).
- 70.233 *Ennomos quercinaria* (Hufnagel, 1767) **AUGUST THORN** Local  
Recorded in: ST60; ST61; ST71; ST91; SU00; SY69; SY79; SZ19. ST60/6108 Leigh, Wesley House (ST6108); 25 Jul; 01 Sep (G A Nash). ST61/6610 Ryewater Farm (ST6610); 31 Jul; 2 on 27 Aug; 26 Sep (W T Franklin). ST71/7310 Alners Gorse (ST7310); 25 Jul, leg. J Oughton (J Oughton, N Spring). ST71/7417 Stalbridge (ST7417); 21 Jul, leg. L de Whalley (N Brown). ST91/9618 Monk's Arundell Coppice (ST9618); 29 Jul (M Jeffes). SY69/MT 0001 Frampton (SY6294); 01 Aug (H C R Wheatcroft). SY79/MT 0001 Puddletown (SY7695); 16 Aug; 17 Aug (H G Wood Homer). Three Legged Cross, Bay Close (SU0806); 2 on 29 Jul, leg. D J Evans; 30 Jul, leg. D J Evans (M Rouse).
- 70.246 *Apocheima hispidaria* ([Denis & Schiffermüller], 1775) **SMALL BRINDLED BEAUTY** Local  
Recorded in: ST61; ST91; SU00; SZ09. ST61/6610 Ryewater Farm (ST6610); 10 Mar; 02 Apr (W T Franklin). ST91/9618 Monk's Arundell Coppice (ST9618); 3 on 08 Mar (M Jeffes). ST91/9717 Cranborne Chase (ST9717); 4 on 08 Mar; 08 Mar (P H Sterling). SU00/0609 Hedgerow (SU0609); 09 Mar; 10 Mar (M Lowe). SZ09/MT 0012 Poole (SZ0095); 10 Apr (A H Bicker).
- 70.287 *Charissa obscurata* ([Denis & Schiffermüller], 1775) **ANNULET** Local  
Recorded in: SY39; SY67; SY89. SY39/3693 Charmouth/MT (SY3693); 30 Jul; 31 Jul (G Sell). SY67/6970 Isle of Portland (SY6970); field, 16 Jul (M S Parsons). SY89/8893 Oak Hill (SY8893); 07 Jul, leg. M S Parsons (M S Parsons, J Phillips).
- 70.292 *Dyscia fagaria* (Thunberg, 1784) **GREY SCALLOPED BAR** Local  
Recorded in: SZ08. SZ08/002/11 Studland and Godlingston Heaths (SMU 11) (SZ0383); 05 May, leg. J Seawright (J Seawright, V Giavarini).

- 70.306 *Chlorissa viridata* (Linnaeus, 1758) **SMALL GRASS EMERALD** Na  
Recorded in: SU00. SU00/0603 Holt Heath (SU0603); field, 3 larval on 29 Jul (M S Parsons). SU00/0604 Holt Heath (SU0604); field, 4 larval on 29 Jul; field, 6 larval on 29 Jul; field, 3 larval on 29 Jul; field, 2 larval on 29 Jul (M S Parsons).
- 70.307 *Chlorissa cloraria* (Hübner, [1813]) **SOUTHERN GRASS EMERALD**  
Recorded in: SY66. SY66/6768 Portland, Old Coastguard Cottages (SY6768); 18 Jul **New VC Record**. (R Payne).
- 71.006 *Furcula bicuspis* (Borkhausen, 1790) **ALDER KITTEN** Local  
Recorded in: ST40; ST60. ST40/MT 0002 Beaminster (ST4801); 26 May, leg. M Raper (M Raper, D Raper). ST60/6108 Leigh, Wesley House (ST6108); 17 May (G A Nash).
- 71.023 *Odontosia carmelita* (Esper, [1798]) **SCARCE PROMINENT** Local  
Recorded in: SU00; SU10; SY79; SY88; SZ19. SU00/0609 Hedgerow (SU0609); 22 Apr (M Lowe). SY79/MT 0001 Puddletown (SY7695); 27 Apr; 28 Apr (H G Wood Homer). SY88/MT 0010 East Lulworth (SY8582); 24 Apr (L J Hill).
- 71.024 *Ptilophora plumigera* ([Denis & Schiffermüller], 1775) **PLUMED PROMINENT** Na  
Recorded in: ST91. ST91/9618 Monk's Arundell Coppice (ST9618); 2 on 22 Nov; 3 on 22 Nov (M Jeffes). ST91/9717 Cranborne Chase (ST9717); 22 Nov (M Jeffes). ST91/9718 Witherwind Coppice (ST9718); 2 on 22 Nov; 22 Nov (M Jeffes).
- 71.028 *Clostera pigra* (Hufnagel, 1766) **SMALL CHOCOLATE-TIP** Nb  
Recorded in: ST91; SZ08; SZ19. Studland, Plateau Heath North (SZ0285); field, larval on 09 Sep (J Seawright). Westbury Lodge Tarrant Gunville (ST9212); 4 on 23 Sep (D J Evans).
- 72.004 *Hypena rostralis* (Linnaeus, 1758) **BUTTONED SNOUT** Nb  
Recorded in: SZ08; SZ09. SZ08/0284 Studland (SZ0284); field, 31 Oct (M Botham).
- 72.006 *Hypena obsitalis* (Hübner, [1813]) **BLOXWORTH SNOUT** RDB3  
Recorded in: SY67; SY68; SY98. Mandeville Close, Weymouth (SY6577); 25 Jun (I Middlebrook). SY67/6676 Weymouth (SY6676); 09 Jun; 01 Jul; 09 Jul; 11 Jul; 16 Jul; 22 Jul; 31 Jul; 2 on 04 Aug; 06 Sep (D Foot). SY68/MT 0002 Chickerell (SY6580); 23 Jul (C Pinder). Wareham, Wyatts Lane (SY9287); indoors, 16 Mar, leg. D Foot (B D D Young).
- 72.007 *Hypena crassalis* (Fabricius, 1787) **BEAUTIFUL SNOUT** Local  
Recorded in: SU10; SY68; SY79; SY89. SY68/6187 Blackdown (SY6187); field, 22 Jun; field, 23 Jun; field, 01 Jul (J Oughton). SY79/MT 0001 Puddletown (SY7695); 18 Jul (H G Wood Homer). SY89/8893 Oak Hill (SY8893); 07 Jul, leg. M S Parsons (M S Parsons, J Phillips).
- 72.009 *Leucoma salicis* (Linnaeus, 1758) **WHITE SATIN** Local  
Recorded in: SY49; SY67; SY68; SY78; SY79; SY89; SY98; SZ08. Studland, South Haven Point (SZ0386); 06 Jul (J C Winterbottom). Studland, Zero Ridge North (SZ0485); 23 Jun (J C Winterbottom). SY49/MT 0002 Bothenhampton (SY4892); 05 Jul (M S Parsons). SY67/6676 Weymouth (SY6676); 25 Jun (D Foot). SY68/MT 0003 Weymouth (SY6784); 20 Jul (P Harris). SY78/7083 Weymouth (SY7083); 2 on 05 Jul (J A Newbould). SY79/MT 0001 Puddletown (SY7695); 16 Jul (H G Wood Homer). SY89/8193 Briantspuddle (SY8193); 05 Jul (J D McMillan). SY98/9681 Corfe (SY9681); 05 Jul (A H Bicker). SZ08/0386 Roadside to South Haven Flats, Studland Heath (SZ0386); 23 Jun, leg. J Seawright (J Seawright, V Giavarini, J C Winterbottom).
- 72.016 *Dicallomera fascelina* (Linnaeus, 1758) **DARK TUSSOCK** Local  
Recorded in: SY88; SY89; SY99; SZ08; SZ09; SZ19. Studland, Shell Bay, The Dunes (SZ0386); larval on 13 Jun (J Seawright). SY88/MT 0001 East Lulworth (SY8583); 23 Jul (L J Hill). SY89/04 Morden Bog & Hyde Heath (SY8890); 4 on 23 Jul (C M Manley). SY99/9190 Morden Bog (SY9190); 11 Jul, leg. P H Sterling (J Oughton, P H Sterling, M J Lawson). SZ08/0385 Studland (SZ0385); larval on 19 Jun (J Seawright). SZ08/0386 Roadside to South Haven Flats, Studland Heath (SZ0386); 23 Jun, leg. J Seawright (J Seawright, V Giavarini, J C Winterbottom). SZ08/0386 South Haven Point (SZ0386); 03 Jul; larval on 13 Jun (J Seawright). SZ09/0295 Lodge Hill (SZ0295); field, 2 larval on 16 Jun (S Buckle).
- 72.025 *Parasemia plantaginis* (Linnaeus, 1758) **WOOD TIGER** Local  
Recorded in: ST60; ST70; ST81; ST91; SU01; SY69; SY88. Norden Hill (ST7502); 2 on 15 Jun (M S Warren). ST60/6000 Lankham Bottom (ST6000); field, 05 Jun; field, 3 on 12 Jun (I Middlebrook). ST60/6100 Lankham Bottom (ST6100); field, 8 on 16 Jun; field, 6 on 12 Jun; field, 05 Jun; field, 3 on 19 Jun (M S Parsons). ST60/6701 Cerne Abbas (ST6701); field, 18 Jun (P A Pires). ST60/6702 Cerne Abbas (ST6702); field, 2 on 05 Jun (D Hughes). ST81/8413 Hambledon Hill (ST8413); field, 09 Jun (A Branson). ST81/8718 East Compton (ST8718); field, 01 Jun, leg. L de

- Whalley (A Argyles). ST81/8817 Fontmell Down (ST8817); field, 05 Jun; field, 19 Jun; field, 31 May (L de Whalley). ST81/8818 Clubmen's Down (ST8818); field, 2 on 13 Jun; field, 3 on 01 Jun, leg. L de Whalley; field, 19 Jun; field, 06 Jun; field, 8 on 13 Jun; field, 31 May (W G Shreeves). ST91/001/04 Fontmell and Melbury Downs (SMU 4) (ST9119); field, 13 Jun (J Westgate). SY69/6099 Lankham Bottom (SY6099); field, 05 Jun (I Middlebrook). SY88/8080 Durdle Door (SY8080); field, 4 on 28 May (D Maunder). UKBMS, 1019. 9 (SU0418); field, 3 on 05 Jun (L Smith).
- 72.032 *Coscinia cribraria* (Linnaeus, 1758) **SPECKLED FOOTMAN** Migrant  
Recorded in: SY89. 23 Jul (C M Manley).
- 72.047 *Eilema caniola* (Hübner, [1808]) **HOARY FOOTMAN** Nb  
Recorded in: SY39; SY68; SY78. Broadmayne, Spring Gardens (SY7387); 2 on 20 Jul; 22 Jul (P Bruce-Jones). SY39/3693 Charmouth/MT (SY3693); 31 Jul; 03 Aug (G Sell). SY68/MT 0006 Weymouth (SY6682); 19 Sep (P Harris).
- 72.057 *Pechipogo plumigeralis* (Hübner, [1825]) **PLUMED FAN-FOOT** Vagrant/Accidental  
Recorded in: SY99. Corfe Hills, Broadstone (SY9996); 30 Sep **New VC Record**. (J Seawright).
- 72.060 *Hypenodes humidalis* Doubleday, 1850 **MARSH OBLIQUE-BARRED** Nb  
Recorded in: SY68; SY88; SY89; SY99. SY68/MT 0006 Weymouth (SY6682); 18 Sep (P Harris). SY88/MT 0001 East Lulworth (SY8583); 26 Aug, leg. M Lowe; 16 Sep (M Lowe, M S Parsons). SY89/8193 Briantspuddle (SY8193); 20 Sep; 28 Sep (J D McMillan). SY99/9190 Morden Bog (SY9190); 4 on 11 Jul, leg. P H Sterling; 11 Jul, leg. P H Sterling (J Oughton, P H Sterling, M J Lawson).
- 72.062 *Schrankia taenialis* (Hübner, [1809]) **WHITE-LINE SNOUT** Nb  
Recorded in: SY58; SY79. SY79/MT 0001 Puddletown (SY7695); 21 Jul (H G Wood Homer).
- 72.070 *Trisateles emortualis* ([Denis & Schiffermüller], 1775) **OLIVE CRESCENT** RDB3  
Recorded in: ST91. ST91/9516 Half Hide Coppice (ST9516); 11 Jul (M Jeffes).
- 72.072 *Eublemma ostrina* (Hübner, [1808]) **PURPLE MARBLED** Migrant  
Recorded in: SY67. SY67/6676 Weymouth (SY6676); 31 Oct (D Foot).
- 72.076 *Catocala fraxini* (Linnaeus, 1758) **CLIFDEN NONPAREIL** Migrant  
Recorded in: ST81; SY68; SY79; SY89; SY99; SZ07. Corfe Hills, Broadstone (SY9996); 02 Sep (J Seawright). Piddlehinton, Whites Close (SY7197); field, 22 Sep (J Wardlaw). ST81/8617 Fontmell Magna (ST8617); field, 20 Sep (M Oates). SY68/MT 0001 Dorchester (SY6889); 18 Sep (J E Down). SY79/MT 0001 Puddletown (SY7695); 30 Aug; 02 Sep; 03 Sep; 2 on 15 Sep; 18 Sep; 19 Sep; 28 Sep; 02 Oct; 10 Oct; 16 Oct (H G Wood Homer). SY89/8193 Briantspuddle (SY8193); 28 Sep; 09 Oct; 17 Oct; 18 Oct (J D McMillan). SZ07/0377 Durlston Country Park (SZ0377); 28 Sep (S Nash).
- 72.081 *Catocala sponsa* (Linnaeus, 1767) **DARK CRIMSON UNDERWING** RDB2  
Recorded in: SY66. SY66/MT 0001 Portland (SY6868); 18 Jul (M Cade).
- 73.003 *Trichoplusia ni* (Hübner, [1803]) **NIMOTH** Migrant  
Recorded in: SY67; SY79. Portland, Grove (SY6972); 28 Oct (M Cade). SY67/6676 Weymouth (SY6676); 31 Oct (D Foot). SY79/MT 0001 Puddletown (SY7695); 28 Oct; 16 Oct (H G Wood Homer).
- 73.008 *Chrysodeixis chalcites* (Esper, [1803]) **GOLDEN TWIN-SPOT** Migrant  
Recorded in: SY67. SY67/6870 Isle of Portland (SY6870); 29 Sep (S Foote).
- 73.009 *Chrysodeixis acuta* (Walker, 1857) **TUNBRIDGE WELLS GEM** Vagrant/Accidental  
Recorded in: SY79. SY79/MT 0001 Puddletown (SY7695); 24 Oct (H G Wood Homer).
- 73.026 *Deltote uncula* (Clerck, 1759) **SILVER HOOK** Local  
Recorded in: SY99; SZ08. Studland, Knoll Study Centre (SZ0383); 28 Jul (J C Winterbottom). SY99/9190 Morden Bog (SY9190); 11 Jul, leg. P H Sterling (J Oughton, P H Sterling, M J Lawson). SZ08/0383 Studland (SZ0383); field, 20 May; field, 2 on 10 Jun (J Seawright). SZ08/0385 Studland (SZ0385); netted, 05 Jul, leg. P H Sterling (J White).
- 73.031 *Tyta luctuosa* ([Denis & Schiffermüller], 1775) **FOUR-SPOTTED** Na  
Recorded in: SY66; SY67. SY66/MT 0001 Portland (SY6868); 14 Jun; 19 Jun; 2 on 23 Jun; 27 Jun; 5 on 17 Jul; 2 on 18 Jul; 3 on 19 Jul; 3 on 21 Jul; 27 on 22 Jul; 18 on 23 Jul; 18 on 24 Jul; 25 Jul; 20 on 27 Jul, leg. S Foote; 6 on 28 Jul, leg.

- S Foote; 5 on 29 Jul, leg. S Foote; 2 on 30 Jul; 02 Aug; 4 on 05 Aug; 07 Aug (M Cade). SY67/6870 Isle of Portland (SY6870); 14 Jun; 15 Jun; 24 Jun; 11 Jul; 18 Jul; 25 Jul; 01 Aug (D Saunders).
- 73.033 *Diloba caeruleocephala* (Linnaeus, 1758) **FIGURE OF EIGHT**  
Recorded in: ST80; SY49; SY58; SY68. ST80/8305 Winterborne Stickland (ST8305); 10 Oct (L de Whalley). SY49/MT 0002 Bothenhampton (SY4892); 18 Oct (M S Parsons). SY58/5387 West Bexington (SY5387); 10 Oct; 11 Oct (D Foot). SY68/MT 0002 Chickerell (SY6580); 15 Oct (C Pinder).
- 73.034 *Moma alpium* (Osbeck, 1778) **SCARCE MERVEILLE DU JOUR** RDB3  
Recorded in: SU00. Horton Wood FC Wigbeth (SU0506); 03 Jul (D J Evans). SU00/0609 Hedgerow (SU0609); 2 on 06 Jun; 03 Jul (M Lowe).
- 73.037 *Acronicta tridens* ([Denis & Schiffmüller], 1775) **DARK DAGGER**  
Recorded in: SU00; SY68. SU00/0102 Wimborne (SU0102); field, 2 larval on 26 Sep (C Williams). SY68/MT 0003 Weymouth (SY6784); male on 29 Sep, gen. det. (P Harris).
- 73.038 *Acronicta psi* (Linnaeus, 1758) **GREY DAGGER**  
Recorded in: SY68; SZ08; SZ09; SZ19. SY68/6085 Portesham (SY6085); field, larval on 08 Aug (J Oughton). SZ08/0285 Studland (SZ0285); field, larval on 04 Aug (J Seawright). Wallisdown, Benbow Crescent (SZ0594); field, larval on 28 Sep (S Buckle).
- 73.050 *Cucullia absinthii* (Linnaeus, 1761) **WORMWOOD** Nb  
Recorded in: SY66; SY67. Portland, Pennsylvania Castle (SY6971); 18 Jul (M Cade). SY66/MT 0001 Portland (SY6868); 2 on 25 Jul; 28 Jul; 2 on 29 Jul (S Foote). SY67/MT 0005 Portland (SY6871); 23 Jul, leg. M Cade (J Williamson).
- 73.053 *Cucullia chamomillae* ([Denis & Schiffmüller], 1775) **CHAMOMILE SHARK** Local  
Recorded in: ST80; SY66; SY67. ST80/8304 Winterborne Stickland (ST8304); 30 May (W W Bown). SY66/MT 0001 Portland (SY6868); 28 Mar; 29 Mar (M Cade). SY67/6870 Isle of Portland (SY6870); 28 Apr (D Saunders).
- 73.061 *Stilbia anomala* (Haworth, 1812) **ANOMALOUS** Local  
Recorded in: SZ08. SZ08/002/11 Studland and Godlingston Heaths (SMU 11) (SZ0284); 01 Sep (J Seawright).
- 73.065 *Asteroscopus sphinx* (Hufnagel, 1766) **SPRAWLER**  
Recorded in: ST60. ST60/6108 Leigh, Wesley House (ST6108); 19 Nov; 22 Nov (G A Nash).
- 73.070 *Pyrrhia umbra* (Hufnagel, 1766) **BORDERED SALLOW** Local  
Recorded in: SY39; SY49; SY66; SY67; SY68; SZ07. Mandeville Close, Weymouth (SY6577); 18 Jun (I Middlebrook). SY39/3693 Charmouth/MT (SY3693); 08 Jun; 3 on 14 Jun; 2 on 19 Jun; 2 on 22 Jun; 26 Jun; 27 Jun; 10 Jul; 21 Aug (G Sell). SY49/MT 0002 Bothenhampton (SY4892); 09 Jun (M S Parsons). SY66/MT 0001 Portland (SY6868); 18 May; 29 Jul (M Cade). SY67/6676 Weymouth (SY6676); 07 Jun; 2 on 08 Jun; 12 Jun; 22 Jun; 2 on 23 Jun; 28 Jun; 4 on 04 Sep (D Foot). SY67/6870 Isle of Portland (SY6870); 2 on 08 Jun; 3 on 09 Jun; 2 on 10 Jun; 2 on 11 Jun; 2 on 13 Jun; 15 Jun; 2 on 16 Jun; 2 on 19 Jun; 2 on 22 Jun; 26 Jun; 28 Jun; 29 Jun; 2 on 01 Jul; 08 Jul; 11 Jul; 22 Jul; 2 on 23 Jul; 2 on 25 Jul; 22 Aug; 31 Aug (D Saunders). SY68/6085 Portesham (SY6085); 15 Jun (J Oughton). SY68/MT 0003 Weymouth (SY6784); 13 Jun; 18 Jul (P Harris). SZ07/0377 Durlston Country Park (SZ0377); 29 May (S Breeze). SZ07/MT 0002 Swanage (SZ0278); 21 Apr; 31 May; 17 on 19 Jun; 13 on 22 Jun; 23 Jun; 2 on 26 Jun; 6 on 30 Jun; 4 on 05 Jul (P England).
- 73.073 *Heliothis maritima* Graslin, 1855 **SHOULDER-STRIPED CLOVER** RDB3  
Recorded in: SU00. SU00/0604 Holt Heath (SU0604); field, larval on 29 Jul; field, 2 larval on 29 Jul (M S Parsons).
- 73.074 *Heliothis peltigera* ([Denis & Schiffmüller], 1775) **BORDERED STRAW** Migrant  
Recorded in: SY39; SY49; SY66; SY67; SY68; SY78. Broadmayne, Spring Gardens (SY7387); 08 Jun (P Bruce-Jones). Portland, Grove (SY6972); 05 Aug (M Cade). SY39/3693 Charmouth/MT (SY3693); 15 Jun (G Sell). SY66/MT 0001 Portland (SY6868); 16 Jun; 08 Aug (M Cade). SY67/6676 Weymouth (SY6676); 24 Jul; 04 Aug (D Foot). SY68/6085 Portesham (SY6085); 15 Jun (J Oughton). SY68/6589 Martinsdown (SY6588); 12 Jul (J M Elliott).
- 73.082 *Cryphia algae* (Fabricius, 1775) **TREE-LICHEN BEAUTY** Rare migrant  
Recorded in: SY66; SY67. SY66/MT 0001 Portland (SY6868); 21 Jul; 23 Jul; 25 Jul (M Cade). SY67/6870 Isle of Portland (SY6870); 08 Aug (D Saunders).



- 73.087 *Spodoptera exigua* (Hübner, [1808]) **SMALL MOTTLED WILLOW** Migrant  
Recorded in: SY49; SY66; SY67; SY68; SY79; SZ07; SZ19. SY49/MT 0002 Bothenhampton (SY4892); 3 on 31 Oct (M S Parsons). SY66/MT 0001 Portland (SY6868); 21 Nov (M Cade). SY67/6870 Isle of Portland (SY6870); 18 Aug; 25 Aug (D Saunders). SY68/MT 0002 Chickerell (SY6580); 31 Oct (C Pinder). SY68/MT 0003 Weymouth (SY6784); 31 Oct (P Harris). SY79/MT 0001 Puddletown (SY7695); 31 Oct (H G Wood Homer). SY79/MT 0002 Tolpuddle (SY7994); 2 on 31 Oct (J Francis). SZ07/0377 Durlston Country Park (SZ0377); 30 Oct (S Whitehouse). SZ07/MT 0002 Swanage (SZ0278); 3 on 31 Oct; 08 Nov (P England).
- 73.093 *Caradrina kadenii* (Freyer, [1836]) **CLANCY'S RUSTIC** Migrant  
Recorded in: SY58; SY67; SY68. SY58/5387 West Bexington (SY5387); 10 Oct; 11 Oct (D Foot). SY67/6676 Weymouth (SY6676); 01 Oct (D Foot). SY68/MT 0003 Weymouth (SY6784); 27 Sep (P Harris).
- 73.100 *Chilodes maritima* (Tauscher, 1806) **SILKY WAINSCOT** Local  
Recorded in: SY68; SY89; SY99; SZ08; SZ19. Lytchett Bay, Lytchett Way (SY9792); 11 Jun; 11 Jul; 2 on 26 Jul (N J Hull). Studland, South Haven Point (SZ0386); 2 on 06 Jul (J C Winterbottom). SY68/6589 Martinsdown (SY6588); 2 on 30 Aug; 29 Sep (J M Elliott). SY89/04 Morden Bog & Hyde Heath (SY8890); 23 Jul (C M Manley). SY99/9190 Morden Bog (SY9190); 11 Jul, leg. P H Sterling (J Oughton, P H Sterling, M J Lawson). SZ08/0386 Roadside to South Haven Flats, Studland Heath (SZ0386); 2 on 16 Jun, leg. J Seawright; 23 Jun, leg. J Seawright; 2 on 30 Jun, leg. J Seawright (J Seawright, V Giavarini, J C Winterbottom).
- 73.119 *Helotropha leucostigma* (Hübner, [1808]) **CRESCENT** Local  
Recorded in: SY66; SY68; SY79; SY98. SY66/MT 0001 Portland (SY6868); 01 Jul; 02 Jul; 21 Jul; 22 Jul (M Cade). SY68/6085 Portesham (SY6085); 02 Sep (J Oughton). SY79/MT 0001 Puddletown (SY7695); 18 Jul; 20 Jul (H G Wood Homer). Wareham, Wyatts Lane (SY9287); 2 on 28 Jul (B D D Young).
- 73.128 *Amphipoea oculatea* (Linnaeus, 1761) **EAR MOTH**  
Recorded in: SY68; SZ19. SY68/MT 0003 Weymouth (SY6784); male on 14 Jul, gen. det. (P Harris).
- 73.137 *Arenostola phragmitidis* (Hübner, [1803]) **FEN WAINSCOT** Local  
Recorded in: SY39; SY49; SY66; SY67; SY68; SY79; SY98; SY99. Lytchett Bay, Lytchett Way (SY9792); 11 Jul; 26 Jul (N J Hull). SY39/3693 Charmouth/MT (SY3693); 16 Jul; 22 Jul (G Sell). SY49/MT 0002 Bothenhampton (SY4892); 24 Jul (M S Parsons). SY66/MT 0001 Portland (SY6868); 17 Jul; 22 Jul (M Cade). SY67/6870 Isle of Portland (SY6870); 11 Jul (M Cade). SY68/MT 0002 Chickerell (SY6580); 18 Jul (C Pinder). SY68/MT 0003 Weymouth (SY6784); 2 on 18 Jul (P Harris). SY79/MT 0001 Puddletown (SY7695); 17 Jul; 23 Jul (H G Wood Homer). SY79/MT 0002 Tolpuddle (SY7994); 18 Jul (J Francis). SY98/9581 Corfe (SY9581); 23 Jul (A Ashworth).
- 73.145 *Photodes fluxa* (Hübner, [1809]) **MERE WAINSCOT** Nb  
Recorded in: ST71. ST71/7310 Alners Gorse (ST7310); 25 Jul, leg. J Oughton (J Oughton, N Spring).
- 73.148 *Photodes morrisii* (Dale, 1837) **MORRIS'S WAINSCOT** RDB1  
Recorded in: SY39. SY39/3693 Charmouth/MT (SY3693); 02 Jun; 19 Jun; 23 Jun; 27 Jun; 12 Jul (G Sell).
- 73.151 *Globia sparganii* (Esper, 1789) **WEBB'S WAINSCOT** Nb  
Recorded in: SY66; SY68; SY79; SY98; SY99; SZ07; SZ08. Lytchett Bay, Lytchett Way (SY9792); 2 on 26 Jul (N J Hull). Scotland heath (SY9683); 20 Jul (A Ashworth). SY66/6869 Culverwell, Portland (SY6869); 04 Sep (M C Townsend). SY66/MT 0001 Portland (SY6868); 29 Jul (S Foote). SY68/MT 0003 Weymouth (SY6784); 28 Jul (P Harris). SY68/MT 0006 Weymouth (SY6682); 28 Jul (P Harris). SY79/MT 0001 Puddletown (SY7695); 31 Jul (H G Wood Homer). SZ07/MT 0002 Swanage (SZ0278); 05 Aug (P England). SZ08/0386 Roadside to South Haven Flats, Studland Heath (SZ0386); 21 Jul, leg. J Seawright (J Seawright, V Giavarini).
- 73.157 *Apamea anceps* ([Denis & Schiffermüller], 1775) **LARGE NUTMEG** Local  
Recorded in: ST61; SY89. ST61/6013 Thornford (ST6013); 4 on 31 May, leg. P H Sterling; 3 on 07 Jun; 2 on 13 Jun; 8 on 19 Jun (N J Howell). ST61/6610 Ryewater Farm (ST6610); 03 Jun; 17 Jun (W T Franklin). SY89/8193 Briantspuddle (SY8193); 03 Jun (J D McMillan).
- 73.164 *Apamea sublustris* (Esper, 1788) **REDDISH LIGHT ARCHES** Local  
Recorded in: ST82; SY79; SZ07. Motcombe Meadows (ST8426); 14 Jul (L de Whalley). SY79/MT 0001 Puddletown (SY7695); 18 Jun; 22 Jun; 11 Jul; 14 Jul (H G Wood Homer). SZ07/MT 0002 Swanage (SZ0278); 18 on 19 Jun; 4 on 21 Jun; 12 on 22 Jun; 5 on 23 Jun; 5 on 26 Jun; 5 on 30 Jun; 3 on 05 Jul; 10 Jul (P England).
- 73.169 *Mesapamea secalis* (Linnaeus, 1758) **COMMON RUSTIC**  
Recorded in: ST90; ST91; SU00; SU01; SZ19. Bagmans Copse Old Down Woodlands (SU0309); male on 03 Jul, gen. det. (D J Evans). Bolehays Copse Woodlands (SU0309); male on 19 Aug, gen. det. (D J Evans). Brockington Beeches

- Drove, Brockington Down (SU0111); male on 03 Jul; male on 03 Jul, gen. det. (D J Evans). Chalbury Hill Copse (SU0107); male on 03 Jul (D J Evans). Haythorne Common Haythorne Horton (SU0307); 03 Jul (D J Evans). Mill Hill Wood Moor Crichel (SU0008); male on 03 Jul, gen. det. (D J Evans). Mill Hill Wood Moor Crichel (SU0009); male on 03 Jul (D J Evans). Oxleaze Copse Chalbury (SU0107); male on 03 Jul (D J Evans). ST90/9507 Tarrant Monkton, Hogstock, Hogstock Coppice (ST9507); male on 19 Aug, gen. det. (D J Evans). Three Legged Cross, Bay Close (SU0806); 2 males on 03 Jul (D J Evans). Westbury Lodge Tarrant Gunville (ST9112); male on 19 Aug, gen. det. (D J Evans). Westbury Lodge Tarrant Gunville (ST9211); male on 19 Aug, gen. det. (D J Evans).
- 73.170 *Mesapamea didyma* (Esper, 1788) **LESSER COMMON RUSTIC**  
Recorded in: SU00; SZ19. Bagmans Copse Old Down Woodlands (SU0309); male on 19 Aug, gen. det.; male on 03 Jul, gen. det. (D J Evans).
- 73.173 *Oligia strigilis* (Linnaeus, 1758) **MARBLED MINOR**  
Recorded in: ST80; ST90; SU00; SU10; SZ19. Bolehays Copse Woodlands (SU0309); male on 03 Jul, gen. det. (D J Evans). Chalbury Hill Copse (SU0107); 03 Jul, gen. det. (D J Evans). Crichel Lane shelterbelt Witchampton (ST9807); male on 03 Jul, gen. det. (D J Evans). Haythorne Common Haythorne Horton (SU0307); male on 03 Jul, gen. det. (D J Evans). Horton Wood FC Wigbeth (SU0506); male on 03 Jul, gen. det. (D J Evans). Oxleaze Copse Chalbury (SU0107); male on 03 Jul, gen. det. (D J Evans). ST80/8304 Winterborne Stickland (ST8304); 25 Jun, gen. det. (W W Bown).
- 73.174 *Oligia latruncula* ([Denis & Schiffermüller], 1775) **TAWNY MARBLED MINOR**  
Recorded in: ST80; SU00; SU10; SZ19. Bagmans Copse Old Down Woodlands (SU0309); male on 03 Jul, gen. det. (D J Evans). ST80/8304 Winterborne Stickland (ST8304); 27 Jun, gen. det. 03 Jul, gen. det. (W W Bown).
- 73.178 *Leucochlaena oditis* (Hübner, [1822]) **BEAUTIFUL GOTHIC RDB3**  
Recorded in: SY66; SY67; SZ07. SY66/6869 Culverwell, Portland (SY6869); 04 Sep (M C Townsend). SY66/MT 0001 Portland (SY6868); 05 Aug (M Cade). SY67/6870 Isle of Portland (SY6870); 18 Sep; 20 Sep; 21 Sep; 01 Oct; 16 Oct; 17 Oct; 18 Oct (S Foote). SY67/MT 0005 Portland (SY6871); 3 on 02 Sep; 05 Sep; 2 on 20 Sep; 23 Sep (J Williamson). SZ07/0377 Durlston Country Park (SZ0377); 18 Sep; 5 on 28 Sep (S Nash).
- 73.183 *Cirrhia gilvago* ([Denis & Schiffermüller], 1775) **DUSKY-LEMON SALLOW Local**  
Recorded in: SY66. SY66/MT 0001 Portland (SY6868); 30 Sep (M Cade).
- 73.188 *Agrochola helvola* (Linnaeus, 1758) **FLOUNCED CHESTNUT**  
Recorded in: SY49; SY58. SY49/MT 0002 Bothenhampton (SY4892); 13 Oct (M S Parsons). SY58/5387 West Bexington (SY5387); 16 Oct (D Foot).
- 73.191 *Agrochola haematidea* (Duponchel, 1827) **SOUTHERN CHESTNUT RDB2**  
Recorded in: SY99. Corfe Hills, Broadstone (SY9996); 14 Oct (J Seawright).
- 73.197 *Conistra rubiginea* ([Denis & Schiffermüller], 1775) **DOTTED CHESTNUT Nb**  
Recorded in: ST60; ST80; SU00; SY39; SY58; SY67; SY68; SY79; SY88; SY99; SZ08; SZ09. Lytchett Bay, Lytchett Way (SY9792); 04 Apr (N J Hull). ST60/6108 Leigh, Wesley House (ST6108); 2 on 09 Mar; 31 Mar; 09 Apr; 13 Apr; 17 Apr (G A Nash). ST80/8304 Winterborne Stickland (ST8304); 11 Apr (W W Bown). SU00/0609 Hedgerow (SU0609); 01 Apr (M Lowe). SY39/3693 Charmouth/MT (SY3693); 21 Apr (G Sell). SY58/5388 Puncknowle (SY5388); 12 Mar (M Hetherington). SY67/6870 Isle of Portland (SY6870); 16 Mar (D Saunders). SY68/MT 0003 Weymouth (SY6784); 14 Mar; 08 Apr; 24 Oct (P Harris). SY68/MT 0006 Weymouth (SY6682); 14 Mar (P Harris). SY79/MT 0001 Puddletown (SY7695); 07 Mar; 12 Mar (H G Wood Homer). SY88/MT 0001 East Lulworth (SY8583); 25 Mar (L J Hill). SZ08/002/11 Studland and Godlingston Heaths (SMU 11) (SZ0383); 2 on 31 Mar, leg. V Giavarini (J Seawright, V Giavarini). SZ09/MT 0012 Poole (SZ0095); 25 Oct, leg. M Jeffes; 25 Oct; 29 Oct; 30 Oct (A H Bicker).
- 73.200 *Lithophane semibrunnea* (Haworth, 1809) **TAWNY PINION Local**  
Recorded in: ST80; SY66; SY79; SY98. ST80/8304 Winterborne Stickland (ST8304); 17 Mar; 02 Apr (W W Bown). SY66/MT 0001 Portland (SY6868); 30 Mar (M Cade). SY79/MT 0001 Puddletown (SY7695); 27 Mar; 01 Apr; 01 May (H G Wood Homer). SY79/MT 0002 Tolpuddle (SY7994); 2 on 02 Apr (J Francis). Wareham, Wyatts Lane (SY9287); 2 on 16 Mar (B D D Young).
- 73.213 *Ipimorpha subtusa* ([Denis & Schiffermüller], 1775) **OLIVE Local**  
Recorded in: ST61; ST71; SY66; SY79. ST61/6610 Ryewater Farm (ST6610); 17 Jul; 31 Jul (W T Franklin). ST71/7310 Alners Gorse (ST7310); 25 Jul, leg. J Oughton (J Oughton, N Spring). SY66/MT 0001 Portland (SY6868); 25 Jul (S Foote). SY79/MT 0001 Puddletown (SY7695); 18 Jul; 26 Jul (H G Wood Homer).
- 73.223 *Dryobota labecula* (Esper, 1788) **OAK RUSTIC Rare migrant**  
Recorded in: SY79; SZ07; SZ08. Studland, Knoll Study Centre (SZ0383); 27 Oct (J C Winterbottom). SY79/MT 0001

- Puddletown (SY7695); 02 Nov (H G Wood Homer). SZ07/MT 0002 Swanage (SZ0278); 19 Oct; 3 on 23 Oct; 5 on 25 Oct; 28 Oct; 6 on 30 Oct; 3 on 31 Oct; 7 on 01 Nov; 15 on 08 Nov; 7 on 13 Nov; 15 Nov; 20 Nov; 21 Nov (P England).
- 73.227 *Dryobotodes tenebrosa* (Esper, 1789) **SOMBRE BROCADE** Migrant  
Recorded in: SY58; SY68; SZ07. SY68/MT 0006 Weymouth (SY6682); 18 Oct (P Harris). SZ07/0377 Durlston Country Park (SZ0377); 18 Oct (S Nash).
- 73.229 *Trigonophora flamma* (Esper, 1785) **FLAME BROCADE** Migrant  
Recorded in: SY58; SY66; SY67; SY77; SY89; SZ07. Portland, Grove (SY6972); 29 Sep (M Cade). SY58/5387 West Bexington (SY5387); 11 Oct (D Foot). SY66/MT 0001 Portland (SY6868); 12 Oct; 2 on 23 Oct; 25 Oct; 26 Oct; 29 Oct (M Cade). SY67/6870 Isle of Portland (SY6870); 10 Oct; 2 on 14 Oct; 2 on 23 Oct; 26 Oct; 28 Oct; 29 Oct (D Saunders). SY67/6970 Isle of Portland, Cheyne Weares (SY6970); 6 on 27 Oct; 17 on 28 Oct (M C Townsend). SY77/7072 Isles of Portland, East Weare (SY7072); 10 on 27 Oct (M C Townsend). SY89/8193 Briantspuddle (SY8193); 01 Nov (J D McMillan). SZ07/0377 Durlston Country Park (SZ0377); 30 Oct; 2 on 27 Oct, leg. S Nash; 29 Oct (S Whitehouse). SZ07/MT 0002 Swanage (SZ0278); 28 Oct (P England).
- 73.230 *Aporophyla australis* (Boisduval, 1829) **FEATHERED BRINDLE** Nb  
Recorded in: SY58; SY67; SY68; SY88; SZ07. SY58/5387 West Bexington (SY5387); 10 Oct; 11 Oct (D Foot). SY67/6870 Isle of Portland (SY6870); 12 Sep; 13 Sep; 16 Sep; 4 on 17 Sep; 4 on 18 Sep; 19 on 19 Sep; 27 on 20 Sep; 9 on 21 Sep; 11 on 22 Sep; 20 on 23 Sep; 14 on 24 Sep; 17 on 25 Sep; 21 on 26 Sep; 72 on 28 Sep; 27 on 29 Sep; 16 on 30 Sep; 15 on 01 Oct; 11 Oct (S Foote). SY67/MT 0005 Portland (SY6871); 3 on 18 Sep; 5 on 20 Sep; 2 on 02 Oct (J Williamson). SY68/MT 0003 Weymouth (SY6784); 10 Oct (P Harris). SY68/MT 0006 Weymouth (SY6682); 10 Oct (P Harris). SY88/MT 0001 East Lulworth (SY8583); 25 Sep (Z Randle). SZ07/0377 Durlston Country Park (SZ0377); 20 on 28 Sep (S Nash). SZ07/MT 0002 Swanage (SZ0278); 7 on 18 Sep; 18 on 19 Sep; 4 on 29 Sep; 03 Oct; 11 Oct (P England).
- 73.231 *Aporophyla lutulenta* ([Denis & Schiffermüller], 1775) **DEEP-BROWN DART**  
Recorded in: ST91; SY67; SY99. Corfe Hills, Broadstone (SY9996); 30 Sep (J Seawright). ST91/9516 Half Hide Coppice (ST9516); 27 Sep (M Jeffes). SY67/6870 Isle of Portland (SY6870); 28 Sep (S Foote).
- 73.234 *Dasypolia templi* (Thunberg, 1792) **BRINDLED OCHRE** Local  
Recorded in: SY79; SZ07. SY79/MT 0001 Puddletown (SY7695); 19 Oct (H G Wood Homer). SZ07/0377 Durlston Country Park (SZ0377); 6 on 18 Oct; 27 Oct, leg. S Nash; 2 on 29 Oct; 10 Apr (S Nash).
- 73.237 *Polymixis flavicincta* ([Denis & Schiffermüller], 1775) **LARGE RANUNCULUS** Local  
Recorded in: ST60; ST61; SY49; SY67. ST60/6108 Leigh, Wesley House (ST6108); 19 Sep; 20 Sep; 21 Sep; 07 Oct; 26 Oct (G A Nash). ST61/6013 Thornford (ST6013); 19 Sep (N J Howell). SY49/MT 0002 Bothenhampton (SY4892); 3 on 20 Sep (M S Parsons). SY67/6870 Isle of Portland (SY6870); 28 Sep; 01 Oct; 02 Oct; 14 Oct; 22 Oct (S Foote).
- 73.243 *Orthosia miniosa* ([Denis & Schiffermüller], 1775) **BLOSSOM UNDERWING** Local  
Recorded in: SY66. SY66/MT 0001 Portland (SY6868); 01 Apr (M Cade).
- 73.248 *Orthosia opima* (Hübner, [1809]) **NORTHERN DRAB** Local  
Recorded in: SY67; SY79. SY67/6870 Isle of Portland (SY6870); 19 Apr (D Saunders). SY79/MT 0001 Puddletown (SY7695); 02 Apr (H G Wood Homer).
- 73.254 *Cerapteryx graminis* (Linnaeus, 1758) **ANTLER MOTH**  
Recorded in: SY67; SY88. SY67/6871 Isle of Portland (SY6871); 20 Jul (M Cade). SY67/MT 0005 Portland (SY6871); 20 Jul (J Williamson). SY88/MT 0001 East Lulworth (SY8583); 12 Aug (L J Hill).
- 73.255 *Anarta trifolii* (Hufnagel, 1766) **NUTMEG**  
Recorded in: ST71; SY39; SY66; SY67; SY68; SY79; SZ07; SZ08; SZ19. Mandeville Close, Weymouth (SY6577); 05 Jul; 29 Jul (I Middlebrook). ST71/7310 Alners Gorse (ST7310); 25 Jul, leg. J Oughton (J Oughton, N Spring). SY39/3693 Charmouth/MT (SY3693); 24 Jun (G Sell). SY66/MT 0001 Portland (SY6868); 16 Apr (M Cade). SY67/6676 Weymouth (SY6676); 04 Jul; 22 Jul; 24 Jul; 28 Jul; 03 Aug; 08 Aug (D Foot). SY67/6870 Isle of Portland (SY6870); 07 Sep; 2 on 08 Sep (D Saunders). SY68/MT 0001 Dorchester (SY6889); 17 May; 30 Jul; 03 Sep (J E Down). SY68/MT 0002 Chickerell (SY6580); 04 Sep (C Pinder). SY79/MT 0001 Puddletown (SY7695); 21 Apr; 17 Jun; 18 Jun; 15 Jul (H G Wood Homer). SZ07/MT 0002 Swanage (SZ0278); 22 May (P England). SZ08/0386 Roadside to South Haven Flats, Studland Heath (SZ0386); 01 Sep, leg. J Seawright (J Seawright, V Giavarini).
- 73.265 *Lacanobia contigua* ([Denis & Schiffermüller], 1775) **BEAUTIFUL BROCADE** Local  
Recorded in: SY89; SY98; SY99; SZ09. SY89/8193 Briantspuddle (SY8193); 13 Jun; 3 on 14 Jun; 15 Jun; 19 Jun; 26 Jun (J D McMillan). SY89/8893 Oak Hill (SY8893); 2 on 07 Jul, leg. M S Parsons (M S Parsons, J Phillips). SY99/9190

- Morden Bog (SY9190); 11 Jul, leg. P H Sterling (J Oughton, P H Sterling, M J Lawson). Wallisdown, Benbow Crescent (SZ0594); 22 Jun (S Buckle). Wareham, Wyatts Lane (SY9287); 06 Jun (B D D Young).
- 73.266 *Lacanobia suasa* ([Denis & Schiffermüller], 1775) **DOG'S TOOTH** Local  
Recorded in: SY66; SY98. Dorset (SY9287); 05 Jul (B D D Young). SY66/6868 Portland Bird Observatory (SY6868); 30 Jul; 31 Jul (J Stockwell). SY66/MT 0001 Portland (SY6868); 11 Aug; 13 Aug (M Cade).
- 73.268 *Lacanobia splendens* (Hübner, [1808]) **SPLENDID BROCADE** Migrant  
Recorded in: SY49; SY66; SY67. Portland, Pennsylvania Castle (SY6971); 19 Jul (M Cade). SY49/MT 0002 Bothenhampton (SY4892); 26 Jul (M S Parsons). SY66/6868 Portland Bird Observatory (SY6868); 26 Jul (J Stockwell). SY66/MT 0001 Portland (SY6868); 4 on 18 Jul; 2 on 21 Jul; 23 Jul (M Cade).
- 73.286 *Hadena perplexa* ([Denis & Schiffermüller], 1775) **TAWNY SHEARS**  
Recorded in: SY58; SY67; SY68; SY78; SY88; SY98. Broadmayne, Spring Gardens (SY7387); 11 Aug (P Bruce-Jones). SY58/5387 West Bexington (SY5387); 31 Aug (D Foot). SY58/5684 Abbotsbury (SY5684); field, 8 on 16 Jul (N Gates). SY58/5784 Abbotsbury Swannery (SY5784); 16 May; field, 03 Sep (J Oughton). SY67/6676 Weymouth (SY6676); 25 Jul; 06 Aug; 09 Aug (D Foot). SY68/6085 Portesham (SY6085); 26 Aug (J Oughton). SY68/MT 0001 Dorchester (SY6889); 26 Jul (J E Down). SY68/MT 0003 Weymouth (SY6784); 17 Jul (P Harris). SY88/MT 0010 East Lulworth (SY8582); 21 Apr (L J Hill). Wareham, Wyatts Lane (SY9287); 27 May (B D D Young).
- 73.288 *Mythimna turca* (Linnaeus, 1761) **DOUBLE LINE** Nb  
Recorded in: SY68. SY68/MT 0002 Chickerell (SY6580); 17 Jun (C Pinder).
- 73.290 *Mythimna conigera* ([Denis & Schiffermüller], 1775) **BROWN-LINE BRIGHT-EYE**  
Recorded in: ST60; SY39; SY66; SY67; SY68; SY78; SZ07; SZ09. Broadmayne, Spring Gardens (SY7387); 09 Jun; 12 Jun (P Bruce-Jones). Merley, Sopwith Crescent (SZ0298); 09 Jun (R W Steedman). ST60/6108 Leigh, Wesley House (ST6108); 03 Sep (G A Nash). SY39/3693 Charmouth/MT (SY3693); 6 on 18 Jun (G Sell). SY39/3992 St Gabriel's (SY3992); 05 Sep (M A Ridge). SY66/MT 0001 Portland (SY6868); 14 Jun (M Cade). SY67/6870 Isle of Portland (SY6870); 21 Jun; 22 Jun; 2 on 26 Jun; 2 on 27 Jun; 3 on 28 Jun; 2 on 29 Jun; 02 Jul; 05 Jul; 2 on 06 Jul; 08 Jul; 2 on 09 Jul; 3 on 10 Jul; 2 on 10 Jul; 5 on 11 Jul; 11 Jul; 12 Jul; 13 Jul; 4 on 14 Jul; 4 on 15 Jul; 16 Jul; 4 on 17 Jul; 2 on 18 Jul; 7 on 19 Jul; 2 on 20 Jul; 5 on 21 Jul; 6 on 22 Jul; 8 on 23 Jul; 4 on 24 Jul; 6 on 25 Jul; 8 on 26 Jul; 9 on 27 Jul; 9 on 28 Jul; 6 on 29 Jul; 6 on 30 Jul; 2 on 31 Jul; 2 on 01 Aug; 3 on 03 Aug; 12 Aug; 13 Aug (D Saunders). SY67/MT 0005 Portland (SY6871); 30 Jun; 2 on 16 Jul; 20 Jul; 2 on 23 Jul; 7 on 26 Jul; 07 Aug (J Williamson). SY68/MT 0003 Weymouth (SY6784); 22 Jul (P Harris). SY68/MT 0006 Weymouth (SY6682); 22 Jul (P Harris). SZ07/0377 Durlston Country Park (SZ0377); 01 Jun (S Breeze).
- 73.291 *Mythimna favicolor* (Barrett, 1896) **MATHEW'S WAINSCOT** Nb  
Recorded in: SZ08. Brands Creek (SZ0284); 21 Jul, leg. J Seawright (J Seawright, V Giavarini).
- 73.296 *Mythimna unipuncta* (Haworth, 1809) **WHITE-SPECK** Migrant  
Recorded in: SY79; SY98; SY99; SZ07. Lytchett Bay, Lytchett Way (SY9792); 11 Jul (N J Hull). SY79/MT 0001 Puddletown (SY7695); 10 Apr (H G Wood Homer). SZ07/0377 Durlston Country Park (SZ0377); 5 on 29 Oct (S Nash). Wareham, Wyatts Lane (SY9287); 22 Jul (B D D Young).
- 73.299 *Mythimna litoralis* (Curtis, 1827) **SHORE WAINSCOT** Nb  
Recorded in: SZ08. Studland, South Haven Point (SZ0386); 5 on 06 Jul (J C Winterbottom). Studland, Zero Ridge North (SZ0485); 4 on 23 Jun; 40 on 23 Jun (J C Winterbottom). SZ08/002/11 Studland and Godlingston Heaths (SMU 11) (SZ0383); 28 Jul, leg. J Seawright (J Seawright, V Giavarini, J White, J C Winterbottom). SZ08/0386 Roadside to South Haven Flats, Studland Heath (SZ0386); 16 Jun, leg. J Seawright; 3 on 23 Jun, leg. J Seawright; 2 on 14 Jul, leg. J Seawright; 6 on 21 Jul, leg. J Seawright (J Seawright, V Giavarini, J C Winterbottom).
- 73.304 *Leucania loreyi* (Duponchel, 1827) **COSMOPOLITAN** Migrant  
Recorded in: SY49; SY66; SY67; SY68; SY79. SY49/MT 0002 Bothenhampton (SY4892); 31 Oct (M S Parsons). SY66/MT 0001 Portland (SY6868); 22 Aug; 08 Sep; 29 Oct (M Cade). SY67/6870 Isle of Portland (SY6870); 30 Oct (D Saunders). SY68/MT 0002 Chickerell (SY6580); 04 Sep (C Pinder). SY68/MT 0006 Weymouth (SY6682); 31 Oct (P Harris). SY79/MT 0001 Puddletown (SY7695); 20 Sep; 27 Oct (H G Wood Homer).
- 73.314 *Euxoa nigricans* (Linnaeus, 1761) **GARDEN DART**  
Recorded in: SY66. SY66/MT 0001 Portland (SY6868); 16 Jul (M Cade).
- 73.316 *Agrotis cinerea* ([Denis & Schiffermüller], 1775) **LIGHT FEATHERED RUSTIC** Nb  
Recorded in: ST80; SY58; SZ07. ST80/8304 Winterborne Stickland (ST8304); 19 May (W W Bown). SY58/5784 Abbotsbury Swannery (SY5784); 2 on 16 May (J Oughton). SZ07/0377 Durlston Country Park (SZ0377); 29 Apr; 01

May; 5 on 09 May; 4 on 10 May; 5 on 12 May; 2 on 13 May; 4 on 29 May; 30 May; 31 May (S Breeze). SZ07/MT 0002 Swanage (SZ0278); 11 May; 16 May; 22 May; 3 on 29 May; 05 Jun; 07 Jun (P England).

73.322 *Agrotis vestigialis* (Hufnagel, 1766) **ARCHER'S DART** Local

Recorded in: SU10; SZ08. SZ08/02 Studland and Godlingston Heaths (SZ0383); 03 Sep (J Seawright). SZ08/0386 Roadside to South Haven Flats, Studland Heath (SZ0386); 5 on 01 Sep, leg. J Seawright (J Seawright, V Giavarini).

73.323 *Agrotis ripae* (Hübner, [1823]) **SAND DART** Nb

Recorded in: SY66; SY67; SZ08. Portland, Ferrybridge (SY6675); 02 Jul (M Cade). SY66/MT 0001 Portland (SY6868); 21 Jul (M Cade). SY67/6676 Weymouth (SY6676); 28 Jun (D Foot). SY67/6870 Isle of Portland (SY6870); 01 Jul (D Saunders). SZ08/0386 Roadside to South Haven Flats, Studland Heath (SZ0386); 16 Jun, leg. J Seawright (J Seawright, V Giavarini, J C Winterbottom).

73.324 *Agrotis trux* (Hübner, [1824]) **CRESCENT DART** Local

Recorded in: SY39; SY49; SY66; SY67; SY68; SZ07. Mandeville Close, Weymouth (SY6577); 03 Jul (I Middlebrook). SY39/3693 Charmouth/MT (SY3693); 12 Jul; 20 Jul (G Sell). SY49/MT 0002 Bothenhampton (SY4892); 12 Jul; 18 Jul; 21 Jul; 29 Jul; 02 Aug (M S Parsons). SY66/MT 0001 Portland (SY6868); 19 Jun (M Cade). SY67/6676 Weymouth (SY6676); 13 Jul; 02 Aug; 03 Aug; 05 Aug (D Foot). SY67/6870 Isle of Portland (SY6870); 52 on 22 Jun; 10 Jul; 2 on 21 Jul; 05 Aug; 07 Aug (D Saunders). SY67/MT 0005 Portland (SY6871); 23 Jul (J Williamson). SY68/6085 Portesham (SY6085); 19 Jul (J Oughton). SZ07/MT 0002 Swanage (SZ0278); 19 Jun; 01 Aug (P England).

73.347 *Noctua janthina* [Denis & Schiffermüller], 1775 **LANGMAID'S YELLOW UNDERWING** Migrant

Recorded in: SY66. SY66/MT 0001 Portland (SY6868); 30 Jun (M Cade).

## Recorders

Records were gratefully received from the following 216 recorders: A Argyles; A Ashworth; A Branson; A Bryant; A Corton; A D'Acouto; A DoCouto; A Duff; A Edwardes; A Fale; A Foster; A H Bicker; A Kirby; A Mahon; A Millar; A Mylward; A Neilson; A O J Evans; A Reese; A Rosenthal; A Simpson; B D D Young; B de Whalley; B Dopita; B P Pickess; C Argles; C Bolton; C Chesters; C Drake; C Fox; C Hollingham; C M Manley; C Marsh; C Mason; C Pinder; C Spilling; C Steele; C Thain; C Williams; D Apps; D Baker; D Cook; D E Brown; D Emblem; D Foot; D Fowler; D Hall; D Higginson-Tranter; D Hughes; D J Evans; D Lambert; D Lonsdale; D Maunder; D Raper; D Saunders; D T Bicker; DERC Volunteer; DWT Staff; E Coan; F Johns; G A Laing; G A Nash; G Hamer; G Laing; G Locke; G Pogson; G Robin; G Sell; G Webb; H C R Wheatcroft; H G Wood Homer; I Laing; I Middlebrook; J A Newbould; J C Winterbottom; J Campbell; J Craig; J D McMillan; J D Powne; J Davies; J Davis; J E Down; J E Slingsby; J Ellis; J Francis; J Galley; J Gilbert; J H Clarke; J H S Cox; J Hurley; J L Turner; J Lucas; J M Elliott; J Mollo; J Oughton; J Phillips; J R Sokolnicki; J Rayner; J Seawright; J Southworth; J Stockwell; J T Martin; J T Pickess; J Tasker; J van Breda; J W Wescombe; J Wardlaw; J Westgate; J White; J Williamson; K Bedford; K Callaghan; K Hedges; K L Rickard; K Wilkinson; L Davy; L de Whalley; L Everitt; L J Hill; L Marsden; L Smith; M A Ridge; M Bailey; M Bell; M Bellingham; M Botham; M Budden; M Burton; M C Townsend; M Cade; M E Hammond; M Fussell; M Giles; M Green; M Hetherington; M Ibbotson; M J Deans; M J Lawson; M Jeffes; M Lowe; M Oates; M Raper; M Ridge; M Rouse; M S Parsons; M S Warren; M Taylor; M Wemyss; N Brown; N Dobbs; N Gates; N Hall; N Howell; N I Jennings; N J Howell; N J Hull; N S Brown; N Spring; P A Pires; P Baker; P Bower; P Bruce-Jones; P Cooper; P Delve; P England; P H Sterling; P Harris; P Jefferies; P Lear; P Lister; R A Cartwright; R Blake; R Clatworthy; R Comont; R Cottle; R D B Hughes; R Fleetwood; R Jones; R Knight; R Knowles; R Norman; R Payne; R Rogers; R Stillman; R W Adams; R W Steedman; R Walls; 'Ricky' Lambert; S Anderson; S B Manning; S Breeze; S Buckle; S Cookson; S Dutton; S Ellis; S Faulkner; S Foote; S Hammond; S Hasler; S Nash; S Philp; S Whitehouse; S Wright; T Breton; T Dando; T Hart; T Morris; T van Breda; Upton Country Park; V Giavarini; V Jefferson; W Dykes; W G Shreeves; W T Franklin; W W Bown & Z Randle.

My apologies if anyone has been omitted from this list.

## References

Agassiz, D.J.L., Beavan, S.D. & Heckford, R.J. 2013. *A checklist of the Lepidoptera of the British Isles*.  
Field Studies Council.