

DORSET MACRO-MOTHS 2015

COUNTY MACRO-MOTH RECORDER'S REPORT

LESLIE J. EVANS-HILL FRES

Butterfly Conservation, Manor Yard, East Lulworth, Dorset BH20 5QP

E-mail: levans-hill@butterfly-conservation.org

Abstract

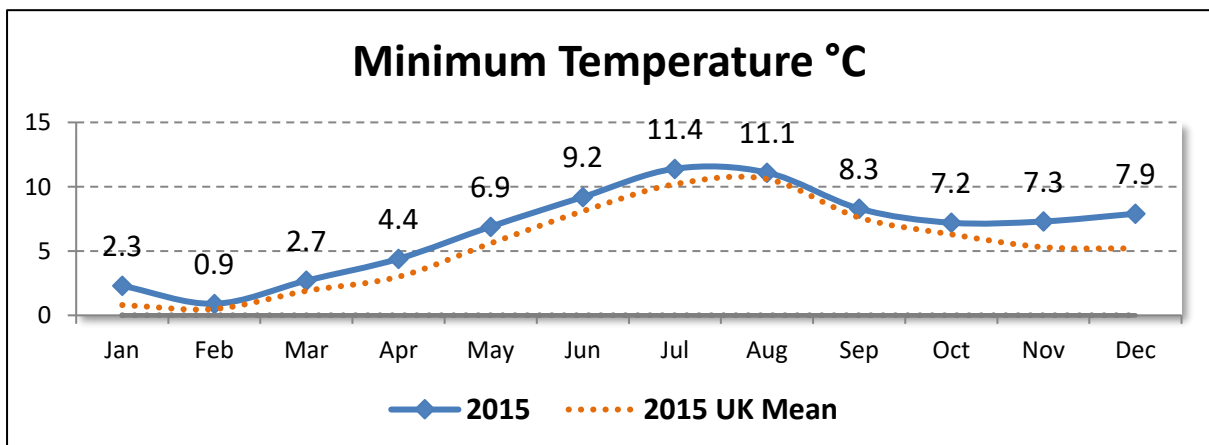
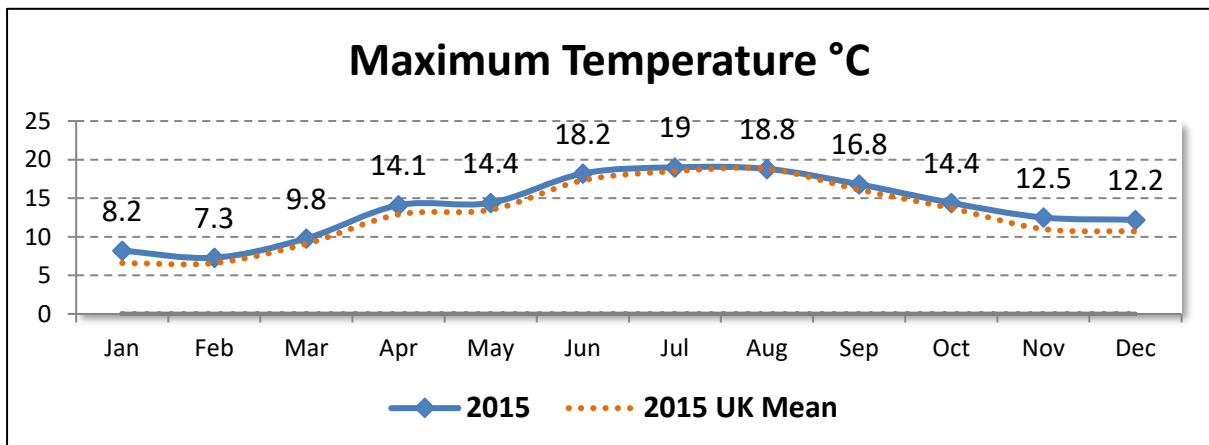
Presented here are data pertaining to submitted records of local macro-moth records of interest during the year 2015 in Dorset administrative and vice-county (9). Errors & omissions expected.

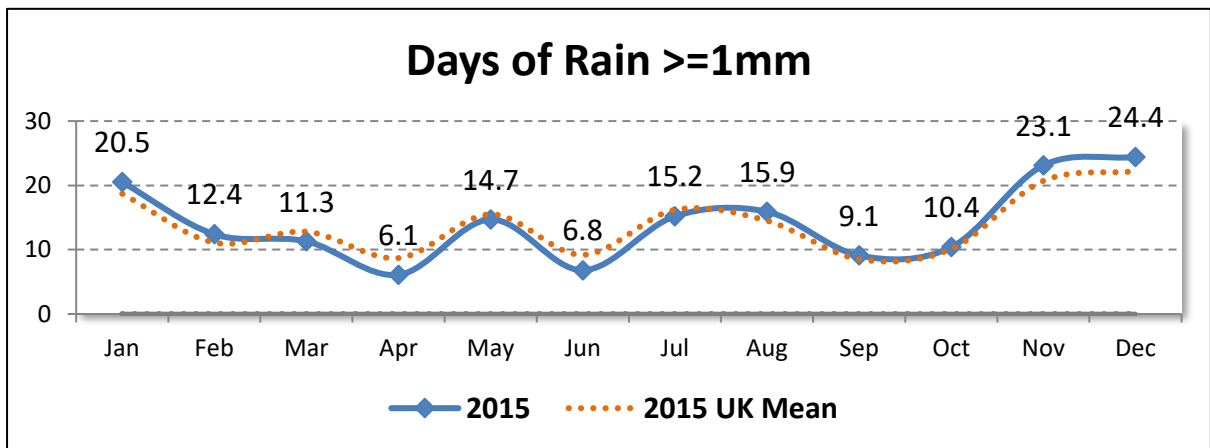
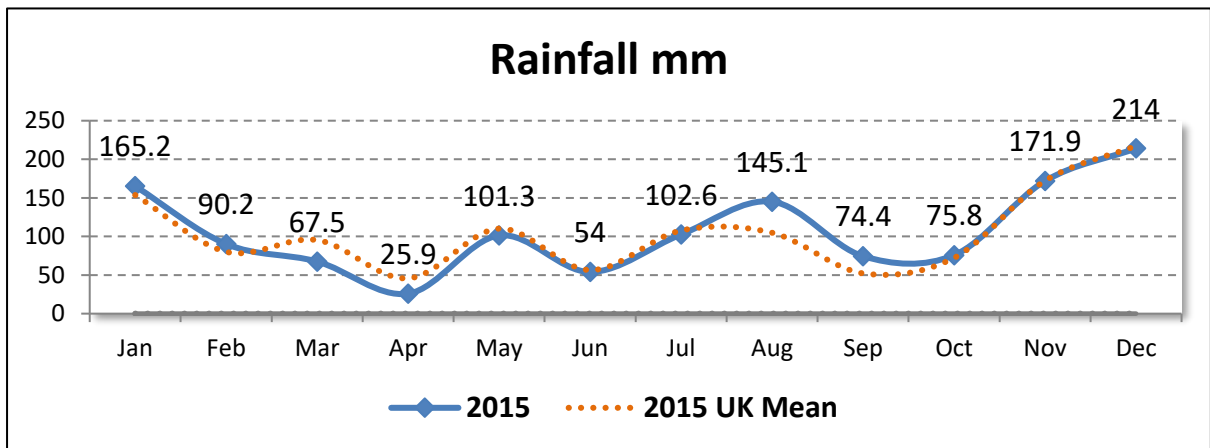
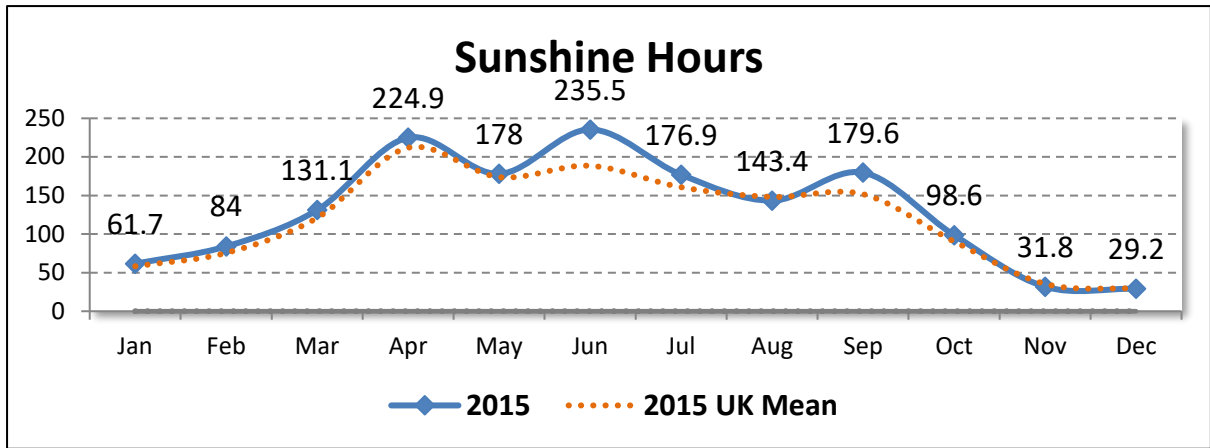
Records and Species per Year

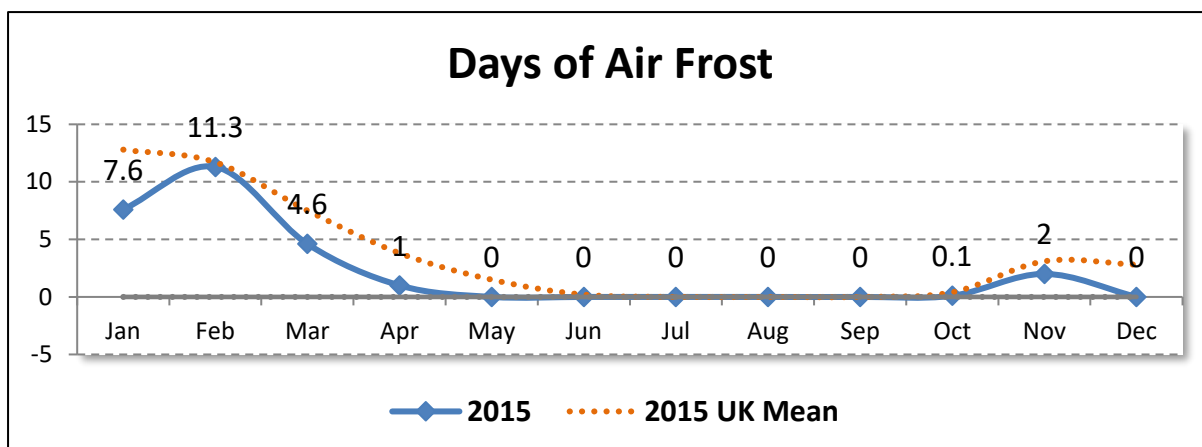
<i>Year</i>	<i>Records</i>	<i>Species</i>
2015	49,842	547

Weather

All data are © Crown Copyright. UK Met Office.







New to Dorset

Two species are confirmed new to Dorset during 2015:

- *Aedia funesta* (Esper, [1786]) **DRUID** from Durlston Country Park (SZ0377); 1 Adult on 01 Jul 2015 by S Nash.
- *Agrotis herzogi* Rebel, 1911 **SPALDING'S DART** from Poole (SZ0092); 1 Adult on 17 Dec 2015 by L Austrin.

Species per 10km

All life stages – Unverified records and records where there is doubt are excluded.

<i>10km</i>	<i>Species</i>	<i>10km</i>	<i>Species</i>	<i>10km</i>	<i>Species</i>	<i>10km</i>	<i>Species</i>
ST20	1	ST82	32	SY66	144	SZ07	277
ST30	1	ST90	125	SY67	270	SZ08	257
ST40	238	ST91	223	SY68	353	SZ09	241
ST50	17	SU00	285	SY69	123		
ST51	48	SU01	36	SY77	0		
ST60	277	SU02	0	SY78	313		
ST61	237	SU10	16	SY79	384		
ST70	157	SU11	1	SY87	3		
ST71	76	SY39	270	SY88	266		
ST72	1	SY48	13	SY89	286		
ST73	0	SY49	294	SY97	66		
ST80	221	SY58	235	SY98	313		
ST81	50	SY59	172	SY99	240		

2015 Summary

All figures are for adults. Records with vague dates are excluded; however, unverified records are included. For species that overwinter as adults or emerge the year prior, the earliest and latest dates are unavailable.

<i>Code</i>	<i>Taxon</i>	<i>Vernacular</i>	<i>Records</i>	<i>Individuals</i>	<i>Earliest</i>	<i>Latest</i>
	<i>Acronicta tridens/psi</i>	DARK DAGGER / GREY DAGGER	126	182	15 May	30 Aug
	<i>Amphipoea oculea</i> agg.	EAR MOTH AGG.	49	79	03 Jul	29 Aug
	<i>Amphipyra pyramidea</i> agg.	COPPER UNDERWING AGG.	24	32	02 Aug	20 Sep
	<i>Epirrita dilutata</i> agg.	NOVEMBER MOTH AGG.	53	109	09 Oct	11 Dec
	<i>Euxoa tritici/obelisca</i>	WHITE-LINE DART/SQUARE-SPOT DART	8	10	16 Jul	15 Sep
	<i>Hoplodrina octogenaria/blanda</i>	UNCERTAIN/RUSTIC AGG.	751	6362	26 May	10 Oct
	<i>Mesapamea secalis</i> agg.	COMMON RUSTIC AGG.	676	9971	11 May	21 Sep
	<i>Oligia strigilis</i> agg.	MARBLED MINOR AGG.	534	2122	22 May	06 Sep
3.001	<i>Triodia sylvina</i>	ORANGE SWIFT	107	238	30 Jun	21 Sep
3.002	<i>Korscheltellus lupulina</i>	COMMON SWIFT	177	351	09 May	08 Jul
3.004	<i>Phymatopus hecta</i>	GOLD SWIFT	3	8	27 Jun	28 Jul
3.005	<i>Hepialus humuli</i>	GHOST MOTH	72	86	04 Jun	09 Aug
50.002	<i>Zeuzera pyrina</i>	LEOPARD MOTH	19	21	30 Jun	19 Aug
52.014	<i>Bembecia ichneumoniformis</i>	SIX-BELTED CLEARWING	1	10	30 Jun	30 Jun
53.001	<i>Apoda limacodes</i>	FESTOON	28	37	12 Jun	23 Jul
54.002	<i>Adscita statures</i>	FORESTER	31	94	25 May	08 Jul
54.003	<i>Adscita geryon</i>	CISTUS FORESTER	12	89	16 Jun	09 Jul
54.008	<i>Zygaena filipendulae</i>	SIX-SPOT BURNET	145	406	05 Jun	22 Aug
54.009	<i>Zygaena lonicerae</i>	NARROW-BORDERED FIVE-SPOT BURNET	11	43	10 Jun	10 Jul
54.010	<i>Zygaena trifolii</i>	FIVE-SPOT BURNET	23	73	18 Jun	29 Jul
65.001	<i>Falcaria lacertinaria</i>	SCALLOPED HOOK-TIP	73	143	10 Apr	28 Aug
65.002	<i>Watsonalla binaria</i>	OAK HOOK-TIP	44	60	11 May	15 Sep
65.003	<i>Watsonalla cultraria</i>	BARRED HOOK-TIP	1	4	20 Aug	20 Aug
65.005	<i>Drepana falcataria</i>	PEBBLE HOOK-TIP	108	168	04 May	31 Aug
65.007	<i>Cilix glaucata</i>	CHINESE CHARACTER	111	133	15 Apr	11 Sep

<i>Code</i>	<i>Taxon</i>	<i>Vernacular</i>	<i>Records</i>	<i>Individuals</i>	<i>Earliest</i>	<i>Latest</i>
65.008	<i>Thyatira batis</i>	PEACH BLOSSOM	33	34	10 Jun	12 Sep
65.009	<i>Habrosyne pyritoides</i>	BUFF ARCHES	179	332	11 Jun	06 Aug
65.010	<i>Tethea ocularis</i>	FIGURE OF EIGHTY	53	57	25 May	19 Jul
65.013	<i>Ochropacha duplaris</i>	COMMON LUTESTRING	37	61	13 Jun	13 Aug
65.015	<i>Polyploca ridens</i>	FROSTED GREEN	14	14	08 Apr	09 May
65.016	<i>Achlya flavicornis</i>	YELLOW HORNED	19	97	07 Mar	14 Apr
66.001	<i>Poecilocampa populi</i>	DECEMBER MOTH	64	136	Unavailable	Unavailable
66.002	<i>Trichiura crataegi</i>	PALE EGGAR	16	28	02 Sep	25 Sep
66.003	<i>Malacosoma neustria</i>	LACKEY	185	540	21 Jun	03 Sep
66.005	<i>Eriogaster lanestris</i>	SMALL EGGAR	7	9	05 Apr	10 Apr
66.006	<i>Lasiocampa trifolii</i>	GRASS EGGAR	1	2	13 Aug	13 Aug
66.007	<i>Lasiocampa quercus</i>	OAK EGGAR	69	95	10 Jul	07 Sep
66.008	<i>Macrothylacia rubi</i>	FOX MOTH	25	30	11 May	15 Jul
66.010	<i>Euthrix potatoria</i>	DRINKER	179	323	21 May	01 Sep
66.012	<i>Gastropacha quercifolia</i>	LAPPET	5	5	01 Jul	19 Jul
68.001	<i>Saturnia pavonia</i>	EMPEROR MOTH	7	9	14 Apr	06 Jun
69.001	<i>Mimas tiliae</i>	LIME HAWK-MOTH	27	28	01 May	03 Jul
69.002	<i>Smerinthus ocellata</i>	EYED HAWK-MOTH	100	117	07 May	21 Jul
69.003	<i>Laothoe populi</i>	POPLAR HAWK-MOTH	297	423	07 May	31 Aug
69.004	<i>Agrius convolvuli</i>	CONVOLVULUS HAWK-MOTH	31	34	10 May	09 Oct
69.005	<i>Acherontia atropos</i>	DEATH'S-HEAD HAWK-MOTH	3	3	05 Sep	14 Sep
69.006	<i>Sphinx ligustri</i>	PRIVET HAWK-MOTH	279	430	23 May	27 Aug
69.007	<i>Sphinx pinastri</i>	PINE HAWK-MOTH	98	128	10 May	31 Aug
69.008	<i>Hemaris tityus</i>	NARROW-BORDERED BEE HAWK-MOTH	2	2	04 May	04 Jun
69.009	<i>Hemaris fuciformis</i>	BROAD-BORDERED BEE HAWK-MOTH	1	1	23 Jul	23 Jul
69.010	<i>Macroglossum stellatarum</i>	HUMMING-BIRD HAWK-MOTH	362	455	12 Mar	11 Oct
69.015	<i>Hyles livornica</i>	STRIPED HAWK-MOTH	17	18	15 May	18 Dec
69.016	<i>Deilephila elpenor</i>	ELEPHANT HAWK-MOTH	485	1588	22 May	10 Sep

Code	Taxon	Vernacular	Records	Individuals	Earliest	Latest
69.017	<i>Deilephila porcellus</i>	SMALL ELEPHANT HAWK-MOTH	136	250	08 Jun	08 Aug
69.018	<i>Hippotion celerio</i>	SILVER-STRIPED HAWK-MOTH	1	1	10 Jul	10 Jul
70.002	<i>Idaea muricata</i>	PURPLE-BORDERED GOLD	1	1	17 Jul	17 Jul
70.003	<i>Idaea ochrata</i>	BRIGHT WAVE	2	2	30 Jun	14 Jul
70.004	<i>Idaea rusticata</i>	LEAST CARPET	4	4	01 Jul	11 Aug
70.006	<i>Idaea fuscovenosa</i>	DWARF CREAM WAVE	60	106	21 Jun	14 Aug
70.008	<i>Idaea seriata</i>	SMALL DUSTY WAVE	61	70	26 May	23 Sep
70.009	<i>Idaea subsericeata</i>	SATIN WAVE	30	35	13 Jun	31 Aug
70.010	<i>Idaea sylvestraria</i>	DOTTED BORDER WAVE	22	49	24 Jun	02 Aug
70.011	<i>Idaea dimidiata</i>	SINGLE-DOTTED WAVE	335	525	18 Jun	30 Sep
70.012	<i>Idaea trigeminata</i>	TREBLE BROWN SPOT	113	161	23 May	15 Sep
70.013	<i>Idaea biselata</i>	SMALL FAN-FOOTED WAVE	257	785	17 Jun	28 Aug
70.015	<i>Idaea emarginata</i>	SMALL SCALLOP	8	17	16 Jun	02 Aug
70.016	<i>Idaea aversata</i>	RIBAND WAVE	616	2107	04 Jun	08 Oct
70.017	<i>Idaea degeneraria</i>	PORTLAND RIBBON WAVE	5	6	23 May	22 Aug
70.018	<i>Idaea straminata</i>	PLAIN WAVE	26	34	20 Jun	29 Aug
70.020	<i>Scopula nigropunctata</i>	SUB-ANGLED WAVE	1	1	01 Jul	01 Jul
70.023	<i>Scopula marginepunctata</i>	MULLEIN WAVE	46	49	15 May	03 Oct
70.024	<i>Scopula imitaria</i>	SMALL BLOOD-VEIN	123	136	11 Jun	17 Aug
70.025	<i>Scopula immutata</i>	LESSER CREAM WAVE	1	1	16 Jul	16 Jul
70.027	<i>Scopula floslactata</i>	CREAM WAVE	7	7	11 May	29 Jun
70.028	<i>Scopula emutaria</i>	ROSY WAVE	3	3	12 Jul	18 Jul
70.029	<i>Timandra comae</i>	BLOOD-VEIN	199	275	09 May	30 Oct
70.030	<i>Cyclophora pendularia</i>	DINGY MOCHA	4	5	10 May	10 Aug
70.031	<i>Cyclophora annularia</i>	MOCHA	41	77	07 May	30 Aug
70.032	<i>Cyclophora albipunctata</i>	BIRCH MOCHA	15	18	12 May	19 Aug
70.033	<i>Cyclophora pupillaria</i>	BLAIR'S MOCHA	5	5	13 Jun	07 Nov
70.034	<i>Cyclophora ruficiliaria</i>	JERSEY MOCHA	1	1	22 Aug	22 Aug

<i>Code</i>	<i>Taxon</i>	<i>Vernacular</i>	<i>Records</i>	<i>Individuals</i>	<i>Earliest</i>	<i>Latest</i>
70.036	<i>Cyclophora punctaria</i>	MAIDEN'S BLUSH	144	212	07 May	20 Sep
70.037	<i>Cyclophora linearia</i>	CLAY TRIPLE-LINES	24	28	07 May	04 Sep
70.038	<i>Rhodometra sacraria</i>	VESTAL	37	39	02 Jul	12 Nov
70.041	<i>Scotopteryx luridata</i>	JULY BELLE	8	16	16 Jun	19 Aug
70.043	<i>Scotopteryx bipunctaria</i>	CHALK CARPET	31	65	01 Jul	29 Aug
70.045	<i>Scotopteryx chenopodiata</i>	SHADED BROAD-BAR	48	110	07 Jul	04 Sep
70.047	<i>Nycterosea obstipata</i>	GEM	14	14	01 Jul	11 Nov
70.049	<i>Xanthorhoe fluctuata</i>	GARDEN CARPET	219	267	22 Apr	03 Nov
70.051	<i>Xanthorhoe spadicearia</i>	RED TWIN-SPOT CARPET	179	291	25 Apr	29 Aug
70.053	<i>Xanthorhoe designata</i>	FLAME CARPET	59	64	07 May	13 Sep
70.054	<i>Xanthorhoe montanata</i>	SILVER-GROUND CARPET	95	123	09 May	18 Aug
70.056	<i>Catarhoe cuculata</i>	ROYAL MANTLE	3	3	02 Jul	15 Jul
70.057	<i>Catarhoe rubidata</i>	RUDDY CARPET	4	4	27 Jun	23 Jul
70.059	<i>Camptogramma bilineata</i>	YELLOW SHELL	109	147	30 May	19 Sep
70.061	<i>Epirrhoe alternata</i>	COMMON CARPET	210	291	09 May	06 Oct
70.062	<i>Epirrhoe rivata</i>	WOOD CARPET	3	3	20 Jun	01 Aug
70.063	<i>Epirrhoe galiata</i>	GALIUM CARPET	37	43	11 May	20 Sep
70.064	<i>Euphyia biangulata</i>	CLOAKED CARPET	4	4	01 Jul	02 Aug
70.065	<i>Euphyia unangulata</i>	SHARP-ANGLED CARPET	9	9	17 Jun	28 Aug
70.066	<i>Earophila badiata</i>	SHOULDER STRIPE	24	28	11 Mar	07 May
70.067	<i>Anticlea derivata</i>	STREAMER	25	27	09 Apr	10 May
70.068	<i>Mesoleuca albicillata</i>	BEAUTIFUL CARPET	1	1	15 Jul	15 Jul
70.069	<i>Pelurga comitata</i>	DARK SPINACH	1	1	22 Aug	22 Aug
70.070	<i>Larentia clavaria</i>	MALLOW	4	7	09 Oct	22 Oct
70.074	<i>Hydriomena furcata</i>	JULY HIGHFLYER	105	491	27 Jun	07 Sep
70.075	<i>Hydriomena impluviata</i>	MAY HIGHFLYER	23	28	11 May	03 Jul
70.076	<i>Hydriomena ruberata</i>	RUDDY HIGHFLYER	2	4	04 May	11 May
70.077	<i>Pennithera firmata</i>	PINE CARPET	71	119	22 May	12 Nov

<i>Code</i>	<i>Taxon</i>	<i>Vernacular</i>	<i>Records</i>	<i>Individuals</i>	<i>Earliest</i>	<i>Latest</i>
70.079	<i>Thera britannica</i>	SPRUCE CARPET	50	73	14 Apr	11 Nov
70.081	<i>Thera obeliscata</i>	GREY PINE CARPET	110	189	14 Apr	16 Dec
70.083	<i>Thera cupressata</i>	CYPRESS CARPET	37	41	27 May	17 Dec
70.084	<i>Plemyria rubiginata</i>	BLUE-BORDERED CARPET	31	35	20 Jun	01 Aug
70.085	<i>Cidaria fulvata</i>	BARRED YELLOW	31	45	10 Jun	11 Jul
70.086	<i>Electrophaes corylata</i>	BROKEN-BARRED CARPET	30	32	01 May	03 Jul
70.087	<i>Cosmorhoe ocellata</i>	PURPLE BAR	61	74	09 May	15 Sep
70.089	<i>Eulithis prunata</i>	PHOENIX	26	28	03 Jun	22 Aug
70.090	<i>Eulithis testata</i>	CHEVRON	6	7	19 Jul	14 Aug
70.092	<i>Eulithis mellinata</i>	SPINACH	2	2	27 Jun	15 Jul
70.093	<i>Gandaritis pyraliata</i>	BARRED STRAW	87	137	27 Jun	02 Aug
70.094	<i>Ecliptopera silaceata</i>	SMALL PHOENIX	45	75	15 Apr	30 Aug
70.095	<i>Chloroclysta siterata</i>	RED-GREEN CARPET	91	146	Unavailable	Unavailable
70.097	<i>Dysstroma truncata</i>	COMMON MARBLED CARPET	412	692	12 Apr	18 Dec
70.098	<i>Dysstroma citrata</i>	DARK MARBLED CARPET	14	25	01 Aug	12 Aug
70.100	<i>Colostygia pectinataria</i>	GREEN CARPET	122	148	01 May	19 Oct
70.103	<i>Lampropteryx suffumata</i>	WATER CARPET	8	11	10 Apr	01 May
70.106	<i>Operophtera brumata</i>	WINTER MOTH	47	90	Unavailable	Unavailable
70.111	<i>Asthenia albulata</i>	SMALL WHITE WAVE	40	263	26 Apr	20 Sep
70.112	<i>Euchoeca nebulata</i>	DINGY SHELL	6	18	08 Jun	01 Aug
70.114	<i>Hydrelia flammeolaria</i>	SMALL YELLOW WAVE	63	80	10 Jun	11 Aug
70.116	<i>Venusia blomeri</i>	BLOMER'S RIVULET	1	1	13 Jul	13 Jul
70.117	<i>Minoa murinata</i>	DRAB LOOPER	3	5	13 May	21 May
70.118	<i>Philereme vetulata</i>	BROWN SCALLOP	2	4	17 Jun	28 Jul
70.119	<i>Philereme transversata</i>	DARK UMBER	1	1	15 Jul	15 Jul
70.121	<i>Rheumaptera undulata</i>	SCALLOP SHELL	29	32	15 Jun	15 Aug
70.123	<i>Triphosa dubitata</i>	TISSUE	1	1	03 Aug	03 Aug
70.124	<i>Pareulype berberata</i>	BARBERRY CARPET	1	1	07 May	07 May

<i>Code</i>	<i>Taxon</i>	<i>Vernacular</i>	<i>Records</i>	<i>Individuals</i>	<i>Earliest</i>	<i>Latest</i>
70.126	<i>Horisme vitalbata</i>	SMALL WAVED UMBER	46	61	25 May	29 Aug
70.127	<i>Horisme tersata</i>	FERN	22	22	16 Jun	05 Aug
70.128	<i>Melanthia procellata</i>	PRETTY CHALK CARPET	38	62	25 May	26 Aug
70.130	<i>Odezia atrata</i>	CHIMNEY SWEEPER	4	23	01 Jul	09 Jul
70.131	<i>Mesotype didymata</i>	TWIN-SPOT CARPET	3	8	15 Jul	09 Aug
70.132	<i>Perizoma affinitata</i>	RIVULET	20	22	07 Jun	06 Aug
70.133	<i>Perizoma alchemillata</i>	SMALL RIVULET	26	31	17 Jun	12 Aug
70.134	<i>Perizoma bifaciata</i>	BARRED RIVULET	7	11	09 Jul	31 Aug
70.137	<i>Perizoma albulata</i>	GRASS RIVULET	8	8	23 May	01 Sep
70.138	<i>Perizoma flavofasciata</i>	SANDY CARPET	39	40	12 May	03 Aug
70.141	<i>Gymnoscelis rufifasciata</i>	DOUBLE-STRIPED PUG	521	1037	25 Feb	27 Dec
70.142	<i>Chloroclystis v-ata</i>	V-PUG	97	134	14 Apr	30 Aug
70.143	<i>Pasiphila chloerata</i>	SLOE PUG	2	2	11 Jun	25 Jun
70.144	<i>Pasiphila rectangularata</i>	GREEN PUG	213	329	22 May	26 Aug
70.146	<i>Eupithecia haworthiata</i>	HAWORTH'S PUG	14	19	17 Jun	09 Aug
70.147	<i>Eupithecia tenuiata</i>	SLENDER PUG	9	16	14 May	02 Aug
70.148	<i>Eupithecia inturbata</i>	MAPLE PUG	20	22	15 Jul	18 Aug
70.150	<i>Eupithecia linariata</i>	TOADFLAX PUG	5	5	16 Jun	15 Jul
70.151	<i>Eupithecia pulchellata</i>	FOXGLOVE PUG	116	156	10 Apr	22 Jul
70.152	<i>Eupithecia ultimaria</i>	CHANNEL ISLANDS PUG	7	9	06 Jul	15 Sep
70.155	<i>Eupithecia venosata</i>	NETTED PUG	2	2	11 Jun	13 Jun
70.156	<i>Eupithecia abbreviata</i>	BRINDLED PUG	35	42	02 Apr	13 Jun
70.157	<i>Eupithecia dodoneata</i>	OAK-TREE PUG	14	18	15 Apr	26 Jun
70.159	<i>Eupithecia phoeniceata</i>	CYPRESS PUG	19	27	27 Jun	31 Oct
70.160	<i>Eupithecia tripunctaria</i>	WHITE-SPOTTED PUG	14	17	10 May	28 Aug
70.162	<i>Eupithecia tantillaria</i>	DWARF PUG	3	3	22 May	04 Jun
70.163	<i>Eupithecia lariciata</i>	LARCH PUG	2	2	27 May	27 Jun
70.166	<i>Eupithecia simplicata</i>	PLAIN PUG	7	7	25 Jun	19 Aug

Code	Taxon	Vernacular	Records	Individuals	Earliest	Latest
70.168	<i>Eupithecia nanata</i>	NARROW-WINGED PUG	46	113	25 Apr	19 Aug
70.169	<i>Eupithecia innotata</i>	ANGLE-BARRED PUG	4	4	12 Jun	08 Jul
70.171	<i>Eupithecia indigata</i>	OCHREOUS PUG	5	5	01 Jun	18 Jun
70.172	<i>Eupithecia distinctaria</i>	THYME PUG	2	2	22 Jun	15 Jul
70.173	<i>Eupithecia centaureata</i>	LIME-SPECK PUG	118	163	10 May	17 Sep
70.176	<i>Eupithecia intricata</i>	FREYER'S PUG	31	39	21 May	06 Jul
70.177	<i>Eupithecia satyrata</i>	SATYR PUG	2	2	27 May	06 Jul
70.179	<i>Eupithecia absinthiata</i>	WORMWOOD PUG	50	56	04 Jun	07 Sep
70.181	<i>Eupithecia valerianata</i>	VALERIAN PUG	8	8	30 May	10 Jul
70.182	<i>Eupithecia assimilata</i>	CURRENT PUG	26	32	20 Apr	30 Aug
70.183	<i>Eupithecia vulgata</i>	COMMON PUG	169	211	21 Mar	28 Aug
70.184	<i>Eupithecia exigua</i>	MOTTLED PUG	21	23	07 May	13 Jul
70.186	<i>Eupithecia millefoliata</i>	YARROW PUG	1	1	03 Jul	03 Jul
70.187	<i>Eupithecia icterata</i>	TAWNY SPECKLED PUG	8	8	04 Jun	12 Sep
70.188	<i>Eupithecia succenturiata</i>	BORDERED PUG	3	3	15 Jul	23 Jul
70.189	<i>Eupithecia subumbrata</i>	SHADED PUG	11	24	11 Jun	15 Jul
70.190	<i>Eupithecia subfuscata</i>	GREY PUG	36	47	09 May	29 Jul
70.192	<i>Aplocera plagiata</i>	TREBLE-BAR	13	14	11 May	20 Sep
70.198	<i>Lobophora halterata</i>	SERAPHIM	6	8	18 Apr	15 Jun
70.199	<i>Pterapherapteryx sexualata</i>	SMALL SERAPHIM	32	41	22 May	20 Aug
70.200	<i>Acasis viretata</i>	YELLOW-BARRED BRINDLE	69	83	09 May	15 Sep
70.202	<i>Trichopteryx carpinata</i>	EARLY TOOTH-STRIPED	21	47	06 Apr	11 May
70.205	<i>Abraxas grossulariata</i>	MAGPIE MOTH	255	446	19 Jun	26 Sep
70.206	<i>Abraxas sylvata</i>	CLOUDED MAGPIE	4	4	26 Jul	09 Oct
70.207	<i>Lomaspilis marginata</i>	CLOUDED BORDER	358	935	10 May	04 Sep
70.208	<i>Ligdia adustata</i>	SCORCHED CARPET	56	61	15 Apr	17 Aug
70.211	<i>Macaria notata</i>	PEACOCK MOTH	1	1	12 Aug	12 Aug
70.212	<i>Macaria alternata</i>	SHARP-ANGLED PEACOCK	143	185	10 May	30 Aug

Code	Taxon	Vernacular	Records	Individuals	Earliest	Latest
70.214	<i>Macaria liturata</i>	TAWNY-BARRED ANGLE	71	118	22 May	09 Sep
70.218	<i>Chiasmia clathrata</i>	LATTICED HEATH	5	5	20 May	13 Sep
70.221	<i>Cepphis advenaria</i>	LITTLE THORN	11	12	21 May	09 Jul
70.222	<i>Petrophora chlorosata</i>	BROWN SILVER-LINE	121	224	07 May	18 Jul
70.223	<i>Plagodis pulveraria</i>	BARRED UMBER	1	1	28 May	28 May
70.224	<i>Plagodis dolabraria</i>	SCORCHED WING	122	179	09 May	22 Jul
70.225	<i>Pachycnemis hippocastanaria</i>	HORSE CHESTNUT	71	220	09 Mar	30 Dec
70.226	<i>Opisthograptis luteolata</i>	BRIMSTONE MOTH	820	1966	14 Apr	03 Nov
70.227	<i>Epione repandaria</i>	BORDERED BEAUTY	30	36	30 Jun	30 Sep
70.229	<i>Pseudopanthera macularia</i>	SPECKLED YELLOW	12	22	12 May	30 Jun
70.231	<i>Apeira syringaria</i>	LILAC BEAUTY	19	20	17 Jun	16 Jul
70.233	<i>Ennomos quercinaria</i>	AUGUST THORN	7	9	28 Jul	12 Sep
70.234	<i>Ennomos alniaria</i>	CANARY-SHOULDERED THORN	101	148	29 Jul	19 Oct
70.235	<i>Ennomos fuscantaria</i>	DUSKY THORN	130	216	03 Aug	16 Oct
70.236	<i>Ennomos erosaria</i>	SEPTEMBER THORN	26	55	16 Jun	01 Nov
70.237	<i>Selenia dentaria</i>	EARLY THORN	193	257	12 Mar	27 Dec
70.239	<i>Selenia tetralunaria</i>	PURPLE THORN	16	22	10 Apr	14 Aug
70.240	<i>Odontopera bidentata</i>	SCALLOPED HAZEL	41	48	09 May	10 Jul
70.241	<i>Crocallis elinguaris</i>	SCALLOPED OAK	175	236	11 Jun	30 Aug
70.243	<i>Ourapteryx sambucaria</i>	SWALLOW-TAILED MOTH	124	200	26 Jun	21 Aug
70.244	<i>Colotois pennaria</i>	FEATHERED THORN	75	146	09 Oct	17 Dec
70.245	<i>Alsophila aescularia</i>	MARCH MOTH	42	71	06 Mar	21 Apr
70.247	<i>Phigalia pilosaria</i>	PALE BRINDLED BEAUTY	13	14	25 Jan	17 Dec
70.248	<i>Lycia hirtaria</i>	BRINDLED BEAUTY	74	119	29 Mar	03 Jun
70.251	<i>Biston strataria</i>	OAK BEAUTY	65	96	14 Feb	16 Apr
70.252	<i>Biston betularia</i>	PEPPERED MOTH	354	531	07 May	26 Aug
70.254	<i>Agriopsis aurantiaria</i>	SCARCE UMBER	2	2	11 Nov	03 Dec
70.255	<i>Agriopsis marginaria</i>	DOTTED BORDER	48	59	25 Jan	27 Apr

Code	Taxon	Vernacular	Records	Individuals	Earliest	Latest
70.256	<i>Erannis defoliaria</i>	MOTTLED UMBER	29	53	06 Jan	29 Dec
70.257	<i>Menophra abruptaria</i>	WAVED UMBER	43	48	14 Apr	09 Aug
70.258	<i>Peribatodes rhomboidaria</i>	WILLOW BEAUTY	658	1328	11 May	02 Nov
70.262	<i>Selidosema brunnearia</i>	BORDERED GREY	5	9	02 Aug	02 Sep
70.264	<i>Deileptenia ribeata</i>	SATIN BEAUTY	19	29	17 Jun	17 Aug
70.265	<i>Alcis repandata</i>	MOTTLED BEAUTY	75	162	13 Jun	13 Aug
70.267	<i>Hypomecis roboraria</i>	GREAT OAK BEAUTY	1	1	24 Jun	24 Jun
70.268	<i>Hypomecis punctinalis</i>	PALE OAK BEAUTY	4	4	11 Jun	02 Aug
70.270	<i>Ectropis crepuscularia</i>	ENGRAILED	78	102	16 Mar	15 Oct
70.273	<i>Parectropis similaria</i>	BRINDLED WHITE-SPOT	7	11	04 Jun	02 Jul
70.274	<i>Aethalura punctulata</i>	GREY BIRCH	3	3	09 May	04 Jun
70.275	<i>Ematurga atomaria</i>	COMMON HEATH	14	26	27 Apr	02 Jul
70.276	<i>Bupalus piniaria</i>	BORDERED WHITE	15	27	09 Jun	17 Jul
70.277	<i>Cabera pusaria</i>	COMMON WHITE WAVE	129	164	11 May	31 Aug
70.278	<i>Cabera exanthemata</i>	COMMON WAVE	123	145	10 May	10 Sep
70.279	<i>Lomographa bimaculata</i>	WHITE-PINION SPOTTED	11	12	04 May	20 Jun
70.280	<i>Lomographa temerata</i>	CLOUDED SILVER	172	330	10 May	12 Aug
70.282	<i>Theria primaria</i>	EARLY MOTH	7	9	20 Feb	15 Mar
70.283	<i>Campaea margaritaria</i>	LIGHT EMERALD	327	528	23 May	07 Nov
70.284	<i>Hylaea fasciaria</i>	BARRED RED	14	15	13 Jun	07 Aug
70.287	<i>Charissa obscurata</i>	ANNULET	5	6	20 Jul	20 Sep
70.288	<i>Cleorodes lichenaria</i>	BRUSSELS LACE	226	346	04 Jun	04 Sep
70.294	<i>Aspitates ochrearia</i>	YELLOW BELLE	25	34	10 May	21 Sep
70.295	<i>Perconia strigillaria</i>	GRASS WAVE	2	2	09 Jun	17 Jun
70.297	<i>Pseudoterpna pruinata</i>	GRASS EMERALD	18	21	01 Jul	21 Aug
70.299	<i>Geometra papilionaria</i>	LARGE EMERALD	24	70	12 Jun	13 Aug
70.300	<i>Comibaena bajularia</i>	BLOTCHED EMERALD	4	6	18 Jun	02 Jul
70.302	<i>Hemistola chrysoprasaria</i>	SMALL EMERALD	69	100	12 Jun	18 Sep

<i>Code</i>	<i>Taxon</i>	<i>Vernacular</i>	<i>Records</i>	<i>Individuals</i>	<i>Earliest</i>	<i>Latest</i>
70.303	<i>Jodis lactearia</i>	LITTLE EMERALD	4	8	15 Jun	01 Jul
70.305	<i>Hemithea aestivaria</i>	COMMON EMERALD	139	201	17 Jun	21 Aug
70.306	<i>Chlorissa viridata</i>	SMALL GRASS EMERALD	8	9	08 Jun	22 Jul
71.001	<i>Thaumetopoea processionea</i>	OAK PROCESSIONARY	1	1	22 Aug	22 Aug
71.003	<i>Cerura vinula</i>	PUSS MOTH	22	22	16 Apr	01 Jul
71.005	<i>Furcula furcula</i>	SALLOW KITTEN	48	59	10 May	02 Sep
71.006	<i>Furcula bicuspis</i>	ALDER KITTEN	5	7	09 May	04 Jun
71.007	<i>Furcula bifida</i>	POPLAR KITTEN	24	25	07 May	20 Aug
71.009	<i>Stauropus fagi</i>	LOBSTER MOTH	35	39	03 Jun	09 Aug
71.010	<i>Drymonia dodonaea</i>	MARBLED BROWN	34	50	25 Apr	01 Jul
71.011	<i>Drymonia ruficornis</i>	LUNAR MARBLED BROWN	52	74	09 Apr	12 Jun
71.012	<i>Notodonta dromedarius</i>	IRON PROMINENT	74	90	09 May	31 Aug
71.013	<i>Notodonta ziczac</i>	PEBBLE PROMINENT	195	282	20 Apr	04 Sep
71.016	<i>Peridea anceps</i>	GREAT PROMINENT	72	104	14 Apr	11 Jun
71.017	<i>Pheosia tremula</i>	SWALLOW PROMINENT	86	139	20 Apr	03 Sep
71.018	<i>Pheosia gnoma</i>	LESSER SWALLOW PROMINENT	142	245	15 Apr	17 Sep
71.020	<i>Pterostoma palpina</i>	PALE PROMINENT	65	77	13 Apr	29 Aug
71.021	<i>Ptilodon capucina</i>	COXCOMB PROMINENT	59	80	15 Apr	04 Sep
71.023	<i>Odontosia carmelita</i>	SCARCE PROMINENT	1	1	01 May	01 May
71.025	<i>Phalera bucephala</i>	BUFF-TIP	424	745	09 May	21 Aug
71.027	<i>Clostera curtula</i>	CHOCOLATE-TIP	35	43	15 Apr	17 Aug
71.028	<i>Clostera pigra</i>	SMALL CHOCOLATE-TIP	1	1	02 Aug	02 Aug
72.001	<i>Scoliopteryx libatrix</i>	HERALD	48	57	Unavailable	Unavailable
72.002	<i>Rivula sericealis</i>	STRAW DOT	367	761	25 May	24 Nov
72.003	<i>Hypena proboscidalis</i>	SNOUT	445	846	21 May	04 Nov
72.006	<i>Hypena obsitalis</i>	BLOXWORTH SNOUT	4	4	15 Jul	26 Oct
72.007	<i>Hypena crassalis</i>	BEAUTIFUL SNOUT	8	9	14 Jun	19 Jul
72.009	<i>Leucoma salicis</i>	WHITE SATIN	22	23	01 Jul	06 Aug

<i>Code</i>	<i>Taxon</i>	<i>Vernacular</i>	<i>Records</i>	<i>Individuals</i>	<i>Earliest</i>	<i>Latest</i>
72.010	<i>Lymantria monacha</i>	BLACK ARCHES	159	501	13 Jun	02 Sep
72.011	<i>Lymantria dispar</i>	GYPSY MOTH	1	1	21 Aug	21 Aug
72.012	<i>Euproctis chrysorrhoea</i>	BROWN-TAIL	99	206	13 Jun	27 Aug
72.013	<i>Euproctis similis</i>	YELLOW-TAIL	193	376	02 Jul	29 Aug
72.015	<i>Calliteara pudibunda</i>	PALE TUSSOCK	210	407	30 Apr	06 Jul
72.016	<i>Dicallomera fascelina</i>	DARK TUSSOCK	17	22	04 Jun	18 Aug
72.017	<i>Orgyia antiqua</i>	VAPOURER	24	24	02 Jul	07 Nov
72.019	<i>Spilosoma lutea</i>	BUFF ERMINE	709	2407	22 May	06 Sep
72.020	<i>Spilosoma lubricipeda</i>	WHITE ERMINE	303	681	28 Apr	02 Aug
72.022	<i>Diaphora mendica</i>	MUSLIN MOTH	160	245	13 Apr	02 Aug
72.023	<i>Diacrisia sannio</i>	CLOUDED BUFF	11	13	17 Jun	02 Aug
72.024	<i>Phragmatobia fuliginosa</i>	RUBY TIGER	202	405	16 Apr	23 Sep
72.025	<i>Parasemia plantaginis</i>	WOOD TIGER	10	30	17 May	17 Aug
72.026	<i>Arctia caja</i>	GARDEN TIGER	157	253	13 Jun	08 Sep
72.027	<i>Arctia villica</i>	CREAM-SPOT TIGER	31	61	20 May	09 Jul
72.029	<i>Callimorpha dominula</i>	SCARLET TIGER	47	73	05 May	23 Jul
72.030	<i>Euplagia quadripunctaria</i>	JERSEY TIGER	152	316	04 Jun	15 Sep
72.031	<i>Tyria jacobaeae</i>	CINNABAR	229	396	07 May	11 Aug
72.034	<i>Utetheisa pulchella</i>	CRIMSON SPECKLED	1	1	16 Dec	16 Dec
72.035	<i>Miltochrista miniata</i>	ROSY FOOTMAN	272	766	20 Jun	17 Sep
72.036	<i>Nudaria mundana</i>	MUSLIN FOOTMAN	47	78	29 Jun	01 Sep
72.037	<i>Thumatha senex</i>	ROUND-WINGED MUSLIN	20	46	01 Jul	02 Aug
72.038	<i>Cybosia mesomella</i>	FOUR-DOTTED FOOTMAN	44	181	11 Jun	22 Jul
72.041	<i>Lithosia quadra</i>	FOUR-SPOTTED FOOTMAN	243	1109	22 Jun	05 Oct
72.042	<i>Atolmis rubricollis</i>	RED-NECKED FOOTMAN	13	14	11 Jun	01 Aug
72.043	<i>Eilema depressa</i>	BUFF FOOTMAN	127	7016	13 Jun	23 Sep
72.044	<i>Eilema griseola</i>	DINGY FOOTMAN	395	1334	11 Jun	23 Sep
72.045	<i>Eilema lurideola</i>	COMMON FOOTMAN	441	3131	16 Jun	29 Aug

Code	Taxon	Vernacular	Records	Individuals	Earliest	Latest
72.046	<i>Eilema complana</i>	SCARCE FOOTMAN	117	404	18 Jun	12 Sep
72.047	<i>Eilema caniola</i>	HOARY FOOTMAN	7	7	01 Jul	12 Aug
72.049	<i>Eilema sororcula</i>	ORANGE FOOTMAN	124	267	04 May	10 Aug
72.053	<i>Herminia tarsipennalis</i>	FAN-FOOT	145	283	17 Jun	14 Aug
72.055	<i>Herminia grisealis</i>	SMALL FAN-FOOT	72	90	02 Jun	06 Aug
72.060	<i>Hypenodes humidalis</i>	MARSH OBLIQUE-BARRED	3	3	15 Jul	18 Jul
72.061	<i>Schrankia costaestrigalis</i>	PINION-STREAKED SNOUT	32	54	11 Jun	15 Oct
72.062	<i>Schrankia taenialis</i>	WHITE-LINE SNOUT	3	3	15 Jul	09 Aug
72.063	<i>Lygephila pastinum</i>	BLACKNECK	3	3	01 Jul	11 Sep
72.065	<i>Tathorhynchus exsiccata</i>	LEVANT BLACKNECK	2	2	10 Jul	27 Dec
72.066	<i>Parascotia fuliginaria</i>	WAVED BLACK	1	1	06 Jul	06 Jul
72.067	<i>Phytometra viridaria</i>	SMALL PURPLE-BARRED	6	7	28 Jul	13 Aug
72.069	<i>Laspeyria flexula</i>	BEAUTIFUL HOOK-TIP	121	204	20 Jun	17 Aug
72.073	<i>Eublemma parva</i>	SMALL MARBLED	12	12	01 Jul	19 Jul
72.074	<i>Eublemma purpurina</i>	BEAUTIFUL MARBLED	1	1	19 Aug	19 Aug
72.076	<i>Catocala fraxini</i>	CLIFDEN NONPAREIL	16	16	08 Sep	04 Nov
72.078	<i>Catocala nupta</i>	RED UNDERWING	36	41	09 Aug	11 Oct
72.081	<i>Catocala sponsa</i>	DARK CRIMSON UNDERWING	2	2	01 Jul	30 Aug
72.083	<i>Euclidia glyphica</i>	BURNET COMPANION	86	205	20 Apr	04 Jul
72.084	<i>Euclidia mi</i>	MOTHER SHIPTON	23	27	04 May	27 Jun
73.001	<i>Abrostola tripartita</i>	SPECTACLE	344	467	14 Apr	28 Sep
73.002	<i>Abrostola triplasia</i>	DARK SPECTACLE	43	48	30 May	06 Oct
73.003	<i>Trichoplusia ni</i>	NI MOTH	32	39	11 Jun	27 Dec
73.010	<i>Macdunnoughia confusa</i>	DEWICK'S PLUSIA	1	1	11 Sep	11 Sep
73.012	<i>Diachrysia chrysitis</i>	BURNISHED BRASS	239	466	23 May	30 Oct
73.015	<i>Autographa gamma</i>	SILVER Y	921	1951	02 Apr	28 Dec
73.016	<i>Autographa pulchrina</i>	BEAUTIFUL GOLDEN Y	20	25	12 Jun	14 Jul
73.017	<i>Autographa jota</i>	PLAIN GOLDEN Y	56	79	13 Jun	07 Aug

<i>Code</i>	<i>Taxon</i>	<i>Vernacular</i>	<i>Records</i>	<i>Individuals</i>	<i>Earliest</i>	<i>Latest</i>
73.022	<i>Plusia festucae</i>	GOLD SPOT	29	32	12 Jun	11 Sep
73.024	<i>Deltote pygarga</i>	MARbled WHITE SPOT	145	252	25 May	12 Aug
73.026	<i>Deltote uncula</i>	SILVER HOOK	1	1	02 Aug	02 Aug
73.0301	<i>Aedia funesta</i>	DRUID	1	1	01 Jul	01 Jul
73.031	<i>Tyta luctuosa</i>	FOUR-SPOTTED	4	4	23 Jul	12 Aug
73.032	<i>Colocasia coryli</i>	NUT-TREE TUSsock	178	235	10 Apr	03 Sep
73.033	<i>Diloba caeruleocephala</i>	FIGURE OF EIGHT	2	2	07 Oct	30 Oct
73.034	<i>Moma alpium</i>	SCARCE MERVEILLE DU JOUR	5	7	11 Jun	06 Jul
73.036	<i>Acronicta alni</i>	ALDER MOTH	28	37	10 May	22 Jul
73.039	<i>Acronicta aceris</i>	SYCAMORE	65	82	11 May	04 Aug
73.040	<i>Acronicta leporina</i>	MILLER	75	93	12 May	08 Aug
73.045	<i>Acronicta rumicis</i>	KNOT GRASS	119	139	13 Apr	12 Sep
73.046	<i>Subacronicta megacephala</i>	POPLAR GREY	67	86	11 Jun	12 Aug
73.047	<i>Craniophora ligustri</i>	CORONET	174	302	10 May	02 Sep
73.048	<i>Panemeria tenebrata</i>	SMALL YELLOW UNDERWING	3	3	25 May	30 Jun
73.050	<i>Cucullia absinthii</i>	WORMWOOD	3	3	05 Aug	12 Aug
73.052	<i>Cucullia umbratica</i>	SHARK	90	103	21 May	16 Aug
73.053	<i>Cucullia chamomillae</i>	CHAMOMILE SHARK	4	4	22 Apr	15 Jun
73.058	<i>Cucullia verbasci</i>	MULLEIN	21	21	10 Apr	13 Jun
73.062	<i>Amphipyra pyramidea</i>	COPPER UNDERWING	12	16	01 Aug	10 Oct
73.063	<i>Amphipyra berbera</i>	SVENSSON'S COPPER UNDERWING	4	4	09 Jul	26 Aug
73.064	<i>Amphipyra tragopoginis</i>	MOUSE MOTH	69	98	10 Jul	23 Sep
73.065	<i>Asteroscopus sphinx</i>	SPRAWLER	2	2	04 Nov	11 Nov
73.068	<i>Allophyes oxyacanthae</i>	GREEN-BRINDLED CRESCENT	83	128	18 Sep	07 Nov
73.069	<i>Xylocampa areola</i>	EARLY GREY	220	658	07 Mar	27 Dec
73.070	<i>Pyrrhia umbra</i>	BORDERED SALLOW	56	73	26 May	13 Aug
73.074	<i>Heliothis peltigera</i>	BORDERED STRAW	202	387	25 Apr	27 Dec
73.075	<i>Heliothis nubigera</i>	EASTERN BORDERED STRAW	2	2	17 Dec	18 Dec

Code	Taxon	Vernacular	Records	Individuals	Earliest	Latest
73.076	<i>Helicoverpa armigera</i>	SCARCE BORDERED STRAW	53	72	30 Jun	28 Dec
73.084	<i>Bryophila domestica</i>	MARbled BEAUTY	49	62	18 Jun	18 Sep
73.085	<i>Nyctobrya muralis</i>	MARbled GREEN	96	143	25 Jun	11 Sep
73.087	<i>Spodoptera exigua</i>	SMALL MOTTLED WILLOW	198	312	04 Jun	28 Dec
73.091	<i>Elaphria venustula</i>	ROSY MARbled	2	2	21 Jun	15 Jul
73.092	<i>Caradrina morpheus</i>	MOTTLED RUSTIC	236	536	23 May	10 Oct
73.093	<i>Caradrina kadenii</i>	CLANCY'S RUSTIC	3	3	08 Oct	30 Oct
73.095	<i>Caradrina clavipalpis</i>	PALE MOTTLED WILLOW	214	293	16 Apr	05 Nov
73.099	<i>Hoplodrina ambigua</i>	VINE'S RUSTIC	577	2586	10 May	27 Dec
73.100	<i>Chilodes maritima</i>	SILKY WAINSCOT	5	5	12 Jun	27 Aug
73.101	<i>Charanyca trigrammica</i>	TREBLE LINES	288	760	06 May	11 Aug
73.102	<i>Rusina ferruginea</i>	BROWN RUSTIC	66	104	22 May	07 Aug
73.105	<i>Dypterygia scabriuscula</i>	BIRD'S WING	42	54	13 Jun	22 Jul
73.107	<i>Mormo maura</i>	OLD LADY	14	15	17 Jul	10 Sep
73.109	<i>Thalpophila matura</i>	STRAW UNDERWING	89	198	03 Aug	19 Sep
73.113	<i>Phlogophora meticulosa</i>	ANGLE SHADES	283	532	05 Jan	06 Dec
73.114	<i>Euplexia lucipara</i>	SMALL ANGLE SHADES	58	63	04 Jun	24 Sep
73.119	<i>Helotropha leucostigma</i>	CRESCENT	4	4	17 Jul	16 Aug
73.120	<i>Eremobia ochroleuca</i>	DUSKY SALLOW	39	93	10 Jul	22 Aug
73.121	<i>Gortyna flavago</i>	FROSTED ORANGE	24	28	07 Aug	20 Oct
73.123	<i>Hydraecia micacea</i>	ROSY RUSTIC	115	167	18 Jul	01 Nov
73.131	<i>Luperina testacea</i>	FLOUNCED RUSTIC	316	847	11 Jul	09 Oct
73.134	<i>Rhizedra lutosa</i>	LARGE WAINSCOT	36	50	09 Jul	07 Nov
73.136	<i>Nonagria typhae</i>	BULRUSH WAINSCOT	4	4	16 Jun	17 Oct
73.137	<i>Arenostola phragmitidis</i>	FEN WAINSCOT	4	4	04 Jul	02 Aug
73.139	<i>Lenisa geminipuncta</i>	TWIN-SPOTTED WAINSCOT	6	6	02 Aug	02 Sep
73.141	<i>Archanara dissoluta</i>	BROWN-VEINED WAINSCOT	1	1	20 Jul	20 Jul
73.142	<i>Coenobia rufa</i>	SMALL RUFOUS	8	9	13 Jun	28 Sep

Code	Taxon	Vernacular	Records	Individuals	Earliest	Latest
73.144	<i>Denticucullus pygmina</i>	SMALL WAINSCOT	26	33	04 Jul	05 Oct
73.147	<i>Photedes minima</i>	SMALL DOTTED BUFF	28	51	17 Jun	06 Aug
73.148	<i>Photedes morrisii</i>	MORRIS'S WAINSCOT	2	4	24 Jun	24 Jul
73.151	<i>Globia sparganii</i>	WEBB'S WAINSCOT	7	7	28 Jul	18 Sep
73.154	<i>Apamea remissa</i>	DUSKY BROCADE	40	58	10 Jun	18 Aug
73.155	<i>Apamea epomidion</i>	CLOUDED BRINDLE	38	49	21 May	17 Aug
73.156	<i>Apamea crenata</i>	CLOUDED-BORDERED BRINDLE	30	34	10 May	02 Aug
73.157	<i>Apamea anceps</i>	LARGE NUTMEG	6	10	04 Jun	25 Jun
73.158	<i>Apamea sordens</i>	RUSTIC SHOULDER-KNOT	83	107	06 May	03 Jul
73.159	<i>Apamea unanimitis</i>	SMALL CLOUDED BRINDLE	19	29	23 May	17 Jul
73.160	<i>Apamea scolopacina</i>	SLENDER BRINDLE	21	47	06 Jul	12 Aug
73.162	<i>Apamea monoglypha</i>	DARK ARCHES	711	5473	04 Jun	17 Dec
73.163	<i>Apamea lithoxylaea</i>	LIGHT ARCHES	115	174	26 May	05 Aug
73.164	<i>Apamea sublustris</i>	REDDISH LIGHT ARCHES	16	25	16 Jun	18 Jul
73.168	<i>Lateroligia ophiogramma</i>	DOUBLE LOBED	26	51	14 Jun	18 Aug
73.170	<i>Mesapamea didyma</i>	LESSER COMMON RUSTIC	1	1	09 Oct	09 Oct
73.171	<i>Litologia literosa</i>	ROSY MINOR	40	57	03 Jul	11 Sep
73.172	<i>Mesoligia furuncula</i>	CLOAKED MINOR	66	94	03 Jul	30 Aug
73.173	<i>Oligia strigilis</i>	MARBLED MINOR	7	7	16 Jun	19 Jun
73.176	<i>Oligia fasciuncula</i>	MIDDLE-BARRED MINOR	63	109	10 May	03 Aug
73.178	<i>Leucochlaena oditis</i>	BEAUTIFUL GOTHIC	13	32	11 Sep	28 Oct
73.180	<i>Tiliacea aurago</i>	BARRED SALLOW	51	76	04 Sep	11 Nov
73.181	<i>Xanthia togata</i>	PINK-BARRED SALLOW	41	67	18 Sep	03 Nov
73.182	<i>Cirrhia icteritia</i>	SALLOW	47	77	15 Sep	04 Nov
73.186	<i>Agrochola lychnidis</i>	BEADED CHESTNUT	238	1100	12 Sep	17 Nov
73.187	<i>Agrochola litura</i>	BROWN-SPOT PINION	10	12	15 Aug	06 Nov
73.188	<i>Agrochola helvola</i>	FLOUNCED CHESTNUT	5	5	10 Oct	02 Nov
73.189	<i>Agrochola lota</i>	RED-LINE QUAKER	90	155	07 Oct	12 Nov

<i>Code</i>	<i>Taxon</i>	<i>Vernacular</i>	<i>Records</i>	<i>Individuals</i>	<i>Earliest</i>	<i>Latest</i>
73.190	<i>Agrochola macilenta</i>	YELLOW-LINE QUAKER	72	114	09 Oct	18 Dec
73.192	<i>Agrochola circellaris</i>	BRICK	17	20	10 Jul	19 Dec
73.193	<i>Omphaloscelis lunosa</i>	LUNAR UNDERWING	320	2515	26 Aug	07 Nov
73.194	<i>Conistra vaccinia</i>	CHESTNUT	69	91	Unavailable	Unavailable
73.195	<i>Conistra ligula</i>	DARK CHESTNUT	17	17	Unavailable	Unavailable
73.197	<i>Conistra rubiginea</i>	DOTTED CHESTNUT	13	13	Unavailable	Unavailable
73.200	<i>Lithophane semibrunnea</i>	TAWNY PINION	6	6	Unavailable	Unavailable
73.201	<i>Lithophane socia</i>	PALE PINION	29	31	Unavailable	Unavailable
73.202	<i>Lithophane ornitopus</i>	GREY SHOULDER-KNOT	16	17	Unavailable	Unavailable
73.206	<i>Lithophane leautieri</i>	BLAIR'S SHOULDER-KNOT	63	100	06 Oct	16 Nov
73.209	<i>Xylena vetusta</i>	RED SWORD-GRASS	5	5	Unavailable	Unavailable
73.210	<i>Eupsilia transversa</i>	SATELLITE	19	22	Unavailable	Unavailable
73.212	<i>Ipimorpha retusa</i>	DOUBLE KIDNEY	3	3	19 Jul	20 Aug
73.213	<i>Ipimorpha subtusa</i>	OLIVE	1	1	21 Aug	21 Aug
73.216	<i>Cosmia trapezina</i>	DUN-BAR	151	235	01 Jul	29 Aug
73.217	<i>Cosmia pyralina</i>	LUNAR-SPOTTED PINION	12	21	16 Jun	03 Aug
73.219	<i>Atethmia centrago</i>	CENTRE-BARRED SALLOW	31	34	25 Aug	01 Nov
73.220	<i>Brachylochia viminalis</i>	MINOR SHOULDER-KNOT	6	30	07 Jul	06 Aug
73.221	<i>Parastichtis suspecta</i>	SUSPECTED	7	7	24 Jun	05 Sep
73.222	<i>Apterogenum ypsilon</i>	DINGY SHEARS	9	9	30 Jun	28 Jul
73.223	<i>Dryobota labecula</i>	OAK RUSTIC	31	151	06 Oct	13 Nov
73.224	<i>Griposia aprilina</i>	MERVEILLE DU JOUR	51	77	31 Aug	11 Nov
73.225	<i>Dryobotodes eremita</i>	BRINDLED GREEN	13	28	21 Sep	03 Nov
73.227	<i>Dryobotodes tenebrosa</i>	SOMBRE BROCADE	9	37	18 Sep	26 Oct
73.229	<i>Trigonophora flammea</i>	FLAME BROCADE	14	15	29 Sep	01 Nov
73.230	<i>Aporophyla australis</i>	FEATHERED BRINDLE	47	127	07 Sep	22 Oct
73.233	<i>Aporophyla nigra</i>	BLACK RUSTIC	232	907	17 Sep	18 Nov
73.234	<i>Dasytopia templi</i>	BRINDLED OCHRE	4	6	14 Oct	03 Nov

<i>Code</i>	<i>Taxon</i>	<i>Vernacular</i>	<i>Records</i>	<i>Individuals</i>	<i>Earliest</i>	<i>Latest</i>
73.235	<i>Polymixis lichenea</i>	FEATHERED RANUNCULUS	118	352	27 Aug	03 Nov
73.237	<i>Polymixis flavicincta</i>	LARGE RANUNCULUS	15	18	01 Sep	19 Oct
73.241	<i>Panolis flammea</i>	PINE BEAUTY	17	18	09 Mar	12 Jun
73.242	<i>Orthosia incerta</i>	CLOUDED DRAB	199	568	11 Mar	27 May
73.244	<i>Orthosia cerasi</i>	COMMON QUAKER	394	1533	25 Feb	27 Dec
73.245	<i>Orthosia cruda</i>	SMALL QUAKER	105	227	08 Mar	27 May
73.247	<i>Orthosia gracilis</i>	POWDERED QUAKER	48	75	05 Apr	24 Jun
73.248	<i>Orthosia opima</i>	NORTHERN DRAB	5	6	15 Apr	22 Apr
73.249	<i>Orthosia gothica</i>	HEBREW CHARACTER	498	2398	Unavailable	Unavailable
73.250	<i>Anorthoa munda</i>	TWIN-SPOTTED QUAKER	46	57	11 Mar	22 Apr
73.252	<i>Tholera cespitis</i>	HEDGE RUSTIC	17	24	10 Jul	09 Oct
73.253	<i>Tholera decimalis</i>	FEATHERED GOTHIC	26	44	10 Aug	15 Sep
73.254	<i>Cerapteryx graminis</i>	ANTLER MOTH	6	12	15 Jun	20 Aug
73.255	<i>Anarta trifolii</i>	NUTMEG	14	15	24 Apr	09 Sep
73.257	<i>Anarta myrtilli</i>	BEAUTIFUL YELLOW UNDERWING	6	10	01 Jul	11 Aug
73.261	<i>Polia nebulosa</i>	GREY ARCHES	38	51	19 Jun	23 Jul
73.263	<i>Lacanobia w-latinum</i>	LIGHT BROCADE	47	63	11 May	09 Jul
73.264	<i>Lacanobia thalassina</i>	PALE-SHOULDERED BROCADE	18	24	22 May	29 Aug
73.265	<i>Lacanobia contigua</i>	BEAUTIFUL BROCADE	7	8	25 Jun	18 Jul
73.266	<i>Lacanobia suasa</i>	DOG'S TOOTH	3	3	24 May	08 Jul
73.267	<i>Lacanobia oleracea</i>	BRIGHT-LINE BROWN-EYE	614	1685	15 Apr	20 Sep
73.268	<i>Lacanobia splendens</i>	SPLENDID BROCADE	2	2	04 Jul	19 Jul
73.270	<i>Melanchra persicariae</i>	DOT MOTH	111	200	18 Jun	11 Sep
73.271	<i>Ceramica pisi</i>	BROOM MOTH	11	11	21 Jun	23 Jul
73.273	<i>Hada plebeja</i>	SHEARS	84	142	21 May	15 Aug
73.274	<i>Mamestra brassicae</i>	CABBAGE MOTH	72	78	12 May	09 Oct
73.276	<i>Sideridis rivularis</i>	CAMPION	1	1	11 Jun	11 Jun
73.279	<i>Hecatera bicolorata</i>	BROAD-BARRED WHITE	9	12	04 Jun	16 Jul

<i>Code</i>	<i>Taxon</i>	<i>Vernacular</i>	<i>Records</i>	<i>Individuals</i>	<i>Earliest</i>	<i>Latest</i>
73.281	<i>Hadena bicruris</i>	LYCHNIS	115	133	01 May	01 Sep
73.286	<i>Hadena perplexa</i>	TAWNY SHEARS	23	27	07 May	05 Sep
73.288	<i>Mythimna turca</i>	DOUBLE LINE	2	2	03 Jul	04 Jul
73.289	<i>Mythimna pudorina</i>	STRIPED WAINSCOT	19	37	27 Jun	27 Aug
73.290	<i>Mythimna conigera</i>	BROWN-LINE BRIGHT-EYE	42	154	11 May	09 Sep
73.291	<i>Mythimna pallens</i>	COMMON WAINSCOT	499	1308	11 May	01 Nov
73.293	<i>Mythimna impura</i>	SMOKY WAINSCOT	333	947	12 Jun	04 Nov
73.294	<i>Mythimna straminea</i>	SOUTHERN WAINSCOT	27	28	23 Jun	17 Sep
73.295	<i>Mythimna vitellina</i>	DELICATE	24	33	20 Jun	09 Nov
73.296	<i>Mythimna unipuncta</i>	AMERICAN WAINSCOT OR WHITE-SPECK	34	45	19 Jun	27 Dec
73.297	<i>Mythimna albipuncta</i>	WHITE-POINT	348	795	30 Apr	03 Nov
73.298	<i>Mythimna ferrago</i>	CLAY	258	663	27 Jun	26 Sep
73.299	<i>Mythimna litoralis</i>	SHORE WAINSCOT	3	4	22 Jun	16 Jul
73.300	<i>Mythimna l-album</i>	L-ALBUM WAINSCOT	117	216	04 Jun	03 Nov
73.301	<i>Leucania comma</i>	SHOULDER-STRIPED WAINSCOT	97	165	25 May	02 Aug
73.302	<i>Leucania obsoleta</i>	OBSCURE WAINSCOT	6	6	04 Jun	03 Jul
73.304	<i>Leucania loreyi</i>	COSMOPOLITAN	5	5	18 Sep	02 Nov
73.307	<i>Peridroma saucia</i>	PEARLY UNDERWING	68	86	12 May	19 Dec
73.314	<i>Euxoa nigricans</i>	GARDEN DART	5	6	15 Jul	26 Sep
73.316	<i>Agrotis cinerea</i>	LIGHT FEATHERED RUSTIC	1	1	10 Jun	10 Jun
73.317	<i>Agrotis exclamationis</i>	HEART AND DART	965	15605	28 Apr	26 Aug
73.319	<i>Agrotis segetum</i>	TURNIP MOTH	166	322	07 May	17 Dec
73.320	<i>Agrotis clavis</i>	HEART AND CLUB	288	1429	14 May	06 Aug
73.321	<i>Agrotis herzogii</i>	SPALDING'S DART	1	1	17 Dec	17 Dec
73.322	<i>Agrotis vestigialis</i>	ARCHER'S DART	14	19	24 Jun	10 Sep
73.323	<i>Agrotis ripae</i>	SAND DART	3	3	12 Jun	16 Jul
73.324	<i>Agrotis trux</i>	CRESCENT DART	7	8	11 Jun	18 Aug
73.325	<i>Agrotis puta</i>	SHUTTLE-SHAPED DART	555	1213	16 Apr	06 Nov

Code	Taxon	Vernacular	Records	Individuals	Earliest	Latest
73.327	<i>Agrotis ipsilon</i>	DARK SWORD-GRASS	252	369	11 Mar	29 Dec
73.328	<i>Axylia putris</i>	FLAME	361	1147	12 May	22 Aug
73.329	<i>Ochropleura plecta</i>	FLAME SHOULDER	939	2803	10 Apr	27 Dec
73.330	<i>Ochropleura leucogaster</i>	RADFORD'S FLAME SHOULDER	1	1	08 Oct	08 Oct
73.332	<i>Diarsia brunnea</i>	PURPLE CLAY	58	92	08 Jun	02 Aug
73.333	<i>Diarsia mendica</i>	INGRAILED CLAY	186	353	23 May	28 Aug
73.334	<i>Diarsia rubi</i>	SMALL SQUARE-SPOT	740	5475	11 May	21 Oct
73.336	<i>Cerastis rubricosa</i>	RED CHESTNUT	21	29	23 Mar	10 May
73.338	<i>Lycophotia porphyrea</i>	TRUE LOVER'S KNOT	100	479	27 May	29 Aug
73.341	<i>Standfussiana lucernea</i>	NORTHERN RUSTIC	2	3	20 Jun	21 Jun
73.342	<i>Noctua pronuba</i>	LARGE YELLOW UNDERWING	1453	25664	21 May	26 Nov
73.343	<i>Noctua fimbriata</i>	BROAD-BORDERED YELLOW UNDERWING	283	540	25 Jun	10 Oct
73.345	<i>Noctua comes</i>	LESSER YELLOW UNDERWING	547	1363	04 Jun	03 Nov
73.346	<i>Noctua interjecta</i>	LEAST YELLOW UNDERWING	78	145	14 Jun	04 Sep
73.347	<i>Noctua janthina</i>	LANGMAID'S YELLOW UNDERWING	1	1	27 Jun	27 Jun
73.348	<i>Noctua janthe</i>	LESSER BROAD-BORDERED YELLOW UNDERWING	383	3487	23 Jun	02 Oct
73.352	<i>Anaplectoides prasina</i>	GREEN ARCHES	28	32	10 Jun	16 Jul
73.353	<i>Xestia baja</i>	DOTTED CLAY	1	1	26 Sep	26 Sep
73.356	<i>Xestia agathina</i>	HEATH RUSTIC	2	3	11 Sep	11 Sep
73.357	<i>Xestia xanthographa</i>	SQUARE-SPOT RUSTIC	553	3626	18 May	31 Oct
73.358	<i>Xestia sexstrigata</i>	SIX-STRIPED RUSTIC	123	630	30 Jun	03 Oct
73.359	<i>Xestia c-nigrum</i>	SETACEOUS HEBREW CHARACTER	768	3076	10 May	27 Nov
73.361	<i>Xestia triangulum</i>	DOUBLE SQUARE-SPOT	196	388	04 Jun	22 Aug
73.365	<i>Eugnorisma glareosa</i>	AUTUMNAL RUSTIC	9	10	08 Sep	11 Oct
73.368	<i>Naenia typica</i>	GOTHIC	6	6	12 Jul	14 Aug
74.002	<i>Meganola albula</i>	KENT BLACK ARCHES	64	80	24 Jun	18 Aug
74.003	<i>Nola cucullatella</i>	SHORT-CLOAKED MOTH	25	26	29 Jun	28 Jul
74.004	<i>Nola confusalis</i>	LEAST BLACK ARCHES	31	44	07 May	09 Jul

<i>Code</i>	<i>Taxon</i>	<i>Vernacular</i>	<i>Records</i>	<i>Individuals</i>	<i>Earliest</i>	<i>Latest</i>
74.007	<i>Bena bicolorana</i>	SCARCE SILVER-LINES	7	7	21 Jun	10 Aug
74.008	<i>Pseudoips prasinana</i>	GREEN SILVER-LINES	41	45	12 Jun	03 Aug
74.009	<i>Nycteola revayana</i>	OAK NYCTEOLINE	20	23	11 Mar	19 Dec
74.011	<i>Earias clorana</i>	CREAM-BORDERED GREEN PEA	52	78	11 Jun	04 Aug

2015 Significant Resident and Migrant Species Report

Unless stated otherwise, all records are adult moths observed at light traps. Records with vague dates, undetermined records and critical species where there is doubt are excluded (although 10km square is reported). Also excluded are species where the number of recorded 10km squares >10 and the number of records per species is >25. Sites are removed from confidential species. Where no quantity is given, a single moth is assumed. All individual counts are minimum counts.

3.004 *Phymatopus hecta* (Linnaeus, 1758) **GOLD SWIFT** Local

Recorded in: ST91; SY68. ST91/9618 Monk's Arundell Coppice (ST9618); 15 Jul (M Jeffes). ST91/9717 Cranborne Chase (ST9717); 28 Jul (M Jeffes). SY68/6187 Blackdown (SY6187); field, 6 males on 27 Jun (D Foot).

52.014 *Bembecia ichneumoniformis* ([Denis & Schiffermüller], 1775) **SIX-BELTED CLEARWING** Nb

Recorded in: SZ07. SZ07/0277 Durlston Country Park (SZ0277); 10 males on 30 Jun (M S Parsons).

53.001 *Apoda limacodes* (Hufnagel, 1766) **FESTOON** Nb

Recorded in: ST71; SU00; SY78; SY79; SY89; SY98; SY99; SZ08; SZ09; SZ19. Broadmayne, Spring Gardens (SY7387); 10 Jul; 12 Jul; 13 Jul; 16 Jul; 2 on 19 Jul (P Bruce-Jones). Corfe Hills, Broadstone (SY9996); 15 Jul (J Seawright). Hurst Heath (SY7889); 2 on 13 Jun; 2 on 16 Jun (R Hiley). Lytchett Bay, Lytchett Way (SY9792); 12 Jul (N J Hull). Oak Hill, Wareham Forest (SY8893); 6 on 15 Jul, leg. M S Parsons (M S Parsons, Z Randle). ST71/7417 Stalbridge (ST7417); 2 on 30 Jun (L de Whalley). SU00/0609 Hedgerow (SU0609); 06 Jul; 12 Jul; 14 Jul (M Lowe). SY79/MT 0002 Tolpuddle (SY7994); 15 Jul; 23 Jul (J Francis). SY89/04 Morden Bog & Hyde Heath (SY8890); 18 Jul, leg. C M Manley (C M Manley, M S Parsons). SY89/8193 Briantspuddle (SY8193); 16 Jul (J D McMillan). SY98/9787 Arne (SY9787); 12 Jun, leg. L Phillips; 28 Jun, leg. L Phillips; 10 Jul, leg. L Phillips; 16 Jul, leg. L Phillips (L Phillips, G Hinton, J Stockwell). SY99/9897 Corfe Mullen (SY9897); 14 Jun (J Adams). SZ08/0287 Brownsea Island (SZ0287); 14 Jul, leg. C Thain (J Bedford). SZ08/0383 Studland (SZ0383); 30 Jun (D C G Brown). SZ09/MT 0012 Poole (SZ0095); 13 Jun; 10 Jul; 19 Jul (A H Bicker).

54.002 *Adscita staites* (Linnaeus, 1758) **FORESTER** Local

Recorded in: ST60; ST61; ST70; ST71; ST81; SU01. Greenhill Down - compartment 8 (ST7903); 19 Jun (A Rosenthal). Sherborne (ST6315); field, 27 Jun (C R Burningham). ST60/6000 Lankham Bottom (ST6000); field, 2 on 16 Jun, leg. M S Parsons; field, larval on 15 Apr; field, 24 Jun (M S Parsons, C R Burningham). ST60/6100 Lankham Bottom (ST6100); field, 10 on 16 Jun, leg. M S Parsons; field, 19 Jun (M S Parsons, C R Burningham). ST71/002/02 Rooksmoor (SMU 2) (ST7411); field, 05 Jun; field, 3 on 05 Jun; field, 3 on 11 Jun; field, 2 on 11 Jun; field, 3 on 25 Jun (M S Warren). ST71/7310 Alner's Gorse (ST7310); field, 2 on 08 Jul (M S Parsons). ST71/7310 Alners Gorse (ST7310); field, 2 on 04 Jun (M S Parsons). ST71/7317 Stalbridge (ST7317); field, 2 on 25 May, leg. C R Burningham (C R Burningham, L de Whalley). ST71/7410 Rooksmoor (ST7410); field, 25 on 04 Jun; field, 05 Jun; field, 2 on 11 Jun (M S Parsons). ST71/7411 Rooksmoor (ST7411); field, 3 on 04 Jun; field, 27 May; field, 6 on 05 Jun; field, 4 on 11 Jun; field, 25 Jun; field, 05 Jun; field, 2 on 11 Jun; field, 4 on 25 Jun (M S Parsons). ST81/8817 Fontmell Down (ST8817); field, 10 Jun (L de Whalley). ST81/8818 Clubmen's Down (ST8818); field, 2 on 05 Jun (L de Whalley). UKBMS, 1019. 2 (SU0418); field, 18 Jun (L Smith).

54.003 *Adscita geryon* (Hübner, [1813]) **CISTUS FORESTER** Nb

Recorded in: ST60; ST81; ST91; SY69; SY88. ST60/6000 Lankham Bottom (ST6000); field, 11 on 01 Jul, leg. M S Parsons (L de Whalley). ST60/6100 Lankham Bottom (ST6100); field, 12 on 16 Jun; field, 12 on 16 Jun, leg. M S Parsons; field, 10 on 01 Jul; field, 01 Jul (M S Parsons, C R Burningham). ST81/8818 Clubmen's Down (ST8818); field, 30 Jun (W G Shreeves). ST91/001/04 Fontmell and Melbury Downs (SMU 4) (ST9119); field, 01 Jul (J Westgate). SY69/002 Hog Cliff SSSI (SY6197); field, 25 on 23 Jun (L de Whalley). SY69/6297 South Field Hill (SY6297); field, 9 on 23 Jun (L de Whalley). SY88/8280 West Lulworth (SY8280); field, 5 on 09 Jul (M S Warren). UKBMS, Lankham Bottom - S13 (SY6099); field, 01 Jul (L de Whalley).

54.009 *Zygaena lonicerae* (Scheven, 1777) **NARROW-BORDERED FIVE-SPOT BURNET**

Recorded in: ST81; ST91; SZ09. Happy Bottom - compartment 26 (SZ0097); field, 01 Jul (J van Breda). ST81/01 Fontmell and Melbury Downs (ST8818); field, 20 on 30 Jun (W G Shreeves). ST81/8717 Fontmell Down (ST8717); field, 2 on 10 Jun (L de Whalley). ST81/8817 Fontmell Down (ST8817); field, 10 Jun (L de Whalley). ST81/8818 Clubmen's Down (ST8818); field, 3 on 30 Jun; field, 2 on 30 Jun; field, 10 Jul; field, 30 Jun (W G Shreeves). ST91/001/04 Fontmell and Melbury Downs (SMU 4) (ST9119); field, 10 on 01 Jul; field, 01 Jul (J Westgate).

54.010 *Zygaena trifolii* (Esper, 1783) **FIVE-SPOT BURNET** Local

Recorded in: ST71; ST81; ST91; SU01; SY69; SY87; SY88; SZ09. ST71/002/02 Rooksmoor (SMU 2) (ST7411); field, 10 Jul; field, 16 Jul (M S Warren). ST71/7310 Alners Gorse (ST7310); field, 25 Jun; field, 3 on 20 Jun; field, 5 on 25 Jun; field, 2 on 04 Jul (M S Warren). ST71/7410 Rooksmoor (ST7410); field, 3 on 25 Jun; field, 25 Jun; field, 10 Jul (M S Warren). ST71/7411 Rooksmoor (ST7411); field, 10 Jul; field, 25 Jun; field, 2 on 16 Jul; field, 7 on 25 Jun (M S Warren).

- Warren). ST81/8716 Fontmell Magna (ST8716); field, 2 on 18 Jun (J Westgate). ST81/8817 Fontmell Down (ST8817); field, 23 Jul (J Westgate). ST91/001/04 Fontmell and Melbury Downs (SMU 4) (ST9119); field, 6 on 19 Jun (J Westgate). SY69/6598 Ridge Hill (SY6598); 6 on 18 Jul (J Petran). SY87/8779 Worbarrow (SY8779); 9 on 18 Jul (S brown). SY88/8982 West Creech (SY8982); 16 on 29 Jul (C Miller). UKBMS, 1019. 4 (SU0418); field, 24 Jun (L Smith).
- 66.005 *Eriogaster lanestris* (Linnaeus, 1758) **SMALL EGGAR** Nb
Recorded in: ST60; ST61; ST71; ST80; SY39; SY58; SY59; SY67; SY68; SY79. Bowless Wood (ST6313); field, larval feeding signs on 30 May (N J Howell). Butterstreet Cove (SY6379); field, larval on 03 Jun, leg. A Rosenthal; field, larval feeding signs on 03 Jun, leg. A Rosenthal (C Dennett). East Elworth (SY6084); field, 6 larval on 30 Jun (J Oughton). East Fleet Farm-pillbox (SY6379); field, larval feeding signs on 31 May, leg. A Rosenthal; field, larval on 31 May, leg. A Rosenthal (C Dennett). nr Eggardon Hill (SY5594); field, 2 larval on 05 Jun (M S Parsons). ST60/6108 Leigh, Wesley House (ST6108); 07 Apr; female on 08 Apr; 09 Apr (G A Nash). ST71/7310 Alners Gorse (ST7310); field, larval on 04 Jun (M S Parsons). ST80/MT 0001 Winterborne Stickland (ST8305); 05 Apr (L de Whalley). SY39/MT 0001 Charmouth (SY3693); larval on 09 Jul (G Sell). SY58/5088 Cogden Beach (SY5088); field, larval on 28 May; field, 3 larval on 28 May (M S Parsons). SY67/6478 Charlestown (SY6478); field, 3 larval web on 23 Jun (M S Parsons). SY68/6283 Tatton House (SY6283); field, larval on 26 May (M S Parsons). SY68/6982 Preston, Ringstead Crescent (SY6982); 2 on 06 Apr ('Ricky' Lambert). SY68/MT 0006 Weymouth (SY6682); 10 Apr; female on 10 Apr (P Harris).
- 66.006 *Lasiocampa trifolii* ([Denis & Schiffermüller], 1775) **GRASS EGGAR** Na
Recorded in: SY98. Slepe Moor NT, (SY9485); 2 on 13 Aug (A Millar). SY98/9485 Slepe Heath (SY9485); larval on 09 May (D E Brown).
- 69.005 *Acherontia atropos* (Linnaeus, 1758) **DEATH'S-HEAD HAWK-MOTH** Migrant
Recorded in: SY58; SY66; SZ07. SY58/5784 Abbotsbury Swannery (SY5784); field, larval on 21 Aug (J Oughton). SY66/MT 0001 Portland (SY6868); field, 05 Sep (M Cade). SZ07/0278 Swanage (SZ0278); 14 Sep (M Tasker).
- 69.008 *Hemaris tityus* (Linnaeus, 1758) **NARROW-BORDERED BEE HAWK-MOTH** Na
Recorded in: ST50; SY59. ST50/5107 Bracketts Coppice (ST5107); field, 04 Jun (M S Parsons). SY59/5497 Powerstock Common (SY5497); field, 04 May (M S Parsons).
- 69.009 *Hemaris fuciformis* (Linnaeus, 1758) **BROAD-BORDERED BEE HAWK-MOTH** Nb
Recorded in: SY88; SZ09. SY88/MT 0001 East Lulworth (SY8583); field, 23 Jul (A Cooper).
- 69.015 *Hyles livornica* (Esper, [1804]) **STRIPED HAWK-MOTH** Migrant
Recorded in: SU00; SY39; SY49; SY66; SY67; SY68; SY78; SY79; SZ07. Broadmayne, Spring Gardens (SY7387); 07 Jun (P Bruce-Jones). Broadoak, Bridport (SY4396); field, larval on 17 Aug (L Tuthill). Hardown Cottage Loves Lane, Morcombelake, Bridport (SY4094); 15 Jun (S Warren). SU00/0609 Hedgerow (SU0609); 04 Jun (M Lowe). SY39/MT 0001 Charmouth (SY3693); 27 Jul (G Sell). SY49/MT 0002 Bothenhampton (SY4892); 15 May (M S Parsons). SY67/6676 Weymouth (SY6676); 04 Jun (D Foot). SY67/6972 Isle of Portland (SY6972); field, 31 Aug (J R Applin). SY67/6972 Portland, Grove (SY6972); 29 Aug (S Foote). SY67/xxxx Chickerell (SY67); field, 28 Aug; field, 31 Aug (M Cade). SY68/6982 Preston, Ringstead Crescent (SY6982); 10 Jun ('Ricky' Lambert). SY68/MT 0001 Dorchester (SY6889); 08 Jun (J E Down). SY68/MT 0002 Chickerell (SY6580); 06 Jun (C Pinder). SY68/MT 0006 Weymouth (SY6682); 09 Jun; 2 on 18 Dec (P Harris). SY79/MT 0002 Tolpuddle (SY7994); 20 Jun (J Francis). SZ07/0377 Durlston Country Park (SZ0377); 11 Jun (S Nash).
- 69.018 *Hippotion celerio* (Linnaeus, 1758) **SILVER-STRIPED HAWK-MOTH** Migrant
Recorded in: SY39. SY39/MT 0001 Charmouth (SY3693); 10 Jul (G Sell).
- 70.002 *Idaea muricata* (Hufnagel, 1767) **PURPLE-BORDERED GOLD** Nb
Recorded in: SZ08; SZ09. SZ08/0285 Studland (SZ0285); field, 17 Jul (J Seawright).
- 70.003 *Idaea ochrata* (Scopoli, 1763) **BRIGHT WAVE** RDB1
Recorded in: SY49; SZ08. SY49/MT 0002 Bothenhampton (SY4892); 30 Jun (M S Parsons). SZ08/0386 Studland (SZ0386); field, 14 Jul, leg. M Cade (J Seawright).
- 70.010 *Idaea sylvestraria* (Hübner, [1799]) **DOTTED BORDER WAVE** Nb
Recorded in: SU00; SY89; SY98; SZ09. Merley, Sopwith Crescent (SZ0298); 24 Jun; 2 on 25 Jun; 29 Jun; 3 on 04 Jul (R W Steedman). Oak Hill, Wareham Forest (SY8893); 10 on 15 Jul, leg. M S Parsons (M S Parsons, Z Randle). SU00/0604 Holt Heath (SU0604); 3 on 02 Aug (M J Hammond). SY89/04 Morden Bog & Hyde Heath (SY8890); 18 Jul, leg. C M Manley (C M Manley, M S Parsons). SY98/9585 Slepe Heath (SY9585); 10 on 22 Jul, leg. M S Parsons; 2 on 20 Jul (M S Parsons, A Foster, A M Davis). SY98/9586 Slepe Heath (SY9586); 2 on 20 Jul (V Giavarini).

- SY98/9787 Arne (SY9787); 2 on 05 Jul, leg. L Phillips; 11 Jul, leg. L Phillips; 12 Jul, leg. L Phillips; 14 Jul, leg. L Phillips; 15 Jul, leg. L Phillips; 16 Jul, leg. L Phillips; 18 Jul, leg. L Phillips; 19 Jul, leg. L Phillips; 20 Jul, leg. L Phillips; 21 Jul, leg. L Phillips; 2 on 22 Jul, leg. L Phillips (L Phillips, G Hinton, J Stockwell). Three Legged Cross (SU0705); 19 Jul (C Bowden).
- 70.015 *Idaea emarginata* (Linnaeus, 1758) **SMALL SCALLOP** Local
Recorded in: ST61; SU00; SY39; SY98; SY99; SZ09. Lytchett Bay, Lytchett Way (SY9792); 31 Jul (N J Hull). ST61/6610 Ryewater Farm (ST6610); 2 on 15 Jul (W T Franklin). SU00/0604 Holt Heath (SU0604); 02 Aug (M J Hammond). SY39/MT 0001 Charmouth (SY3693); 9 on 16 Jun (G Sell). SY98/9787 Arne (SY9787); 16 Jul, leg. L Phillips; 21 Jul, leg. L Phillips; 26 Jul, leg. L Phillips; 28 Jul, leg. L Phillips (L Phillips, G Hinton, J Stockwell).
- 70.017 *Idaea degeneraria* (Hübner, [1799]) **PORTLAND RIBBON WAVE** RDB3
Recorded in: SY39; SY49; SY66; SY67; SY68. Portland, Broadcroft Quarry (SY6972); 27 Jun (N Spring). SY39/MT 0001 Charmouth (SY3693); 23 May (G Sell). SY49/MT 0002 Bothenhampton (SY4892); 22 Aug (M S Parsons). SY66/6768 Isle of Portland (SY6768); 2 on 22 Jun (C Lewis). SY68/6085 Portesham (SY6085); 29 Jun (J Oughton).
- 70.020 *Scopula nigropunctata* (Hufnagel, 1767) **SUB-ANGLED WAVE** RDB2
Recorded in: SY67. SY67/xxxx Chickerell (SY67); 01 Jul (M Cade).
- 70.025 *Scopula immutata* (Linnaeus, 1758) **LESSER CREAM WAVE** Local
Recorded in: SY78; SZ09. Sutton Poyntz (SY7083); 16 Jul (C Marsh).
- 70.028 *Scopula emutaria* (Hübner, [1809]) **ROSY WAVE** Nb
Recorded in: SY89; SY98; SZ08. SY89/04 Morden Bog & Hyde Heath (SY8890); 18 Jul, leg. C M Manley (C M Manley, M S Parsons). SY98/9787 Arne (SY9787); 12 Jul, leg. L Phillips (L Phillips, G Hinton, J Stockwell). SZ08/0288 Brownsea Island (SZ0288); 14 Jul, leg. C Thain (J Bedford).
- 70.030 *Cyclophora pendularia* (Clerck, 1759) **DINGY MOCHA** RDB3
Recorded in: ST71; SU00; SU10; SY78; SY88; SY89; SY98; SY99; SZ09. Gore Heath (SY9191); field, larval on 27 Aug (M S Parsons). Moreton Plantation (SY8190); field, larval on 26 Aug (M S Parsons). ST71/7511 Deadmoor Common (ST7511); field, 4 larval on 03 Sep; field, 2 larval on 08 Jul (M S Parsons). SU00/0503 White Sheet Plantation (SU0503); field, 2 larval on 02 Sep, leg. M S Parsons (M S Parsons, A M Davis, S Curson). SU00/0609 Boys Wood (SU0609); field, larval on 01 Sep, leg. M S Parsons (M S Parsons, M Lowe). SU00/0609 Hedgerow (SU0609); 2 on 10 May; 04 Jun; 10 Aug (M Lowe). SU10/1001 Hurn Forest (SU1001); field, larval on 01 Sep (M S Parsons). SY88/8086 Winfrith Heath (SY8086); field, larval on 26 Aug (M S Parsons). SY88/8087 Winfrith Heath (SY8087); field, larval on 26 Aug (M S Parsons). SY89/8092 Affpuddle Heath (SY8092); field, larval on 26 Aug (M S Parsons). SY89/8193 Briantspuddle (SY8193); 16 Jun (J D McMillan). SY98/9089 Cold Harbour (SY9089); field, 2 larval on 27 Aug (M S Parsons). Tadnoll (SY7987); field, larval on 26 Aug (M S Parsons). Throop Heath (SY8291); field, larval on 26 Aug; field, 4 larval on 26 Aug; field, 2 larval on 07 Jul (M S Parsons). Uddens Plantation (SU0602); field, 2 larval on 02 Sep (M S Parsons). Wareham Forest (SY8891); field, larval on 27 Aug (M S Parsons). West Moors Plantation (SU0903); field, larval on 02 Sep; field, 8 larval on 02 Sep (M S Parsons).
- 70.031 *Cyclophora annularia* (Fabricius, 1775) **MOCHA** Nb
Recorded in: ST40; ST60; ST61; ST90; ST91; SU00; SY39; SY49; SY79; SY89. Bagmans Cospe Old Down Woodlands (SU0309); 16 Jun (D J Evans). Lyme Regis (SY3392); 17 Aug (M A Ridge). ST40/4907 Chedington Wood (ST4907); 3 on 01 Aug (M J Hammond). ST60/6108 Leigh, Wesley House (ST6108); 19 Jul; 2 on 28 Jul; 07 Aug; 3 on 12 Aug; 30 Aug (G A Nash). ST61/6013 Thornford (ST6013); 07 May; 11 May (N J Howell). ST90/9808 Cockroad Farm (ST9808); 27 May (J W Wescombe). ST91/9618 Monk's Arundell Coppice (ST9618); 28 Jul; 12 Aug; 10 on 12 Aug (M Jeffes). ST91/9717 Cranborne Chase (ST9717); 17 Jun; 5 on 12 Aug; 2 on 28 Jul; 6 on 12 Aug (M Jeffes). ST91/9718 Witherwind Coppice (ST9718); 11 Aug; 2 on 11 Aug; 3 on 09 Aug (M Jeffes). ST91/9719 Great Shaftesbury Coppice (ST9719); 02 Aug; 4 on 09 Aug (M Jeffes). ST91/9818 Barber's Coppice (ST9818); 3 on 05 Aug; 06 Aug (M Jeffes). ST91/9819 Shermel Gate Foxbury (ST9819); 2 on 06 Aug, leg. P H Sterling; 08 Aug; 2 on 05 Aug (M Jeffes). SU00/0609 Hedgerow (SU0609); 11 Jun; 03 Aug; 08 Aug (M Lowe). SY49/MT 0002 Bothenhampton (SY4892); 16 Aug (M S Parsons). SY89/8193 Briantspuddle (SY8193); 11 Aug (J D McMillan). Whitchurch Canonicorum (SY3995); field, 03 Aug; field, 2 on 08 Aug; field, 11 Aug (M Fowlie).
- 70.033 *Cyclophora pupillaria* (Hübner, [1799]) **BLAIR'S MOCHA** Migrant
Recorded in: SY49; SY58; SZ07. SY49/MT 0002 Bothenhampton (SY4892); 28 Aug; 01 Nov; 07 Nov (M S Parsons). SY58/5388 Puncknowle (SY5388); 13 Jun (M Hetherington). SZ07/005/41 South Dorset Coast (SMU 41) (SZ0377); 15 Sep (T Vorsterman).
- 70.034 *Cyclophora ruficiliaria* (Herrich-Schäffer, 1855) **JERSEY MOCHA** Channel Islands only
Recorded in: SY58. SY58/5387 West Bexington (SY5387); 22 Aug (D Foot).

- 70.043 *Scotopteryx bipunctaria* ([Denis & Schiffermüller], 1775) **CHALK CARPET** Nb
 Recorded in: ST81; ST90; SY39; SY48; SY67; SY68; SY88; SY97. Bowers Quarries (SY6871); field, 16 Jul (S Ellis). Bowers Quarries (SY6872); field, 16 Jul (R Jones). Seacombe, (SY9977); swept, 4 on 14 Aug (A Millar). South Purbeck coastal strip (SY9876); swept, 4 on 14 Aug (A Millar). ST81/8818 Clubmen's Down (ST8818); field, 6 on 02 Aug; field, 6 on 25 Jul (R M Porter). ST90/9603 Badbury Rings (ST9603); field, 16 Aug (J Seawright). SY39/MT 0001 Charmouth (SY3693); 01 Jul; 22 Jul; 06 Aug (G Sell). SY48/4988 Burton Bradstock (SY4988); field, 16 Jul, leg. Unknown (T Brereton). SY67/002/65 Isle of Portland (SMU 65) (SY6872); field, 10 on 16 Jul, leg. S Ellis (S Ellis, R Jones). SY67/6870 Isle of Portland (SY6870); 12 Aug; 17 Aug; 28 Aug (D Saunders). SY67/6872 Isle of Portland (SY6872); field, 31 Jul (R Jones). SY67/6971 Isle of Portland (SY6971); field, 06 Aug (R Jones). SY67/6972 Isle of Portland (SY6972); field, 17 Aug; field, 2 on 06 Aug (S Foote). SY67/6972 Portland, Grove (SY6972); 29 Aug (S Foote). SY67/MT 0005 Portland (SY6871); 31 Jul (J Williamson). SY68/6085 Portesham (SY6085); 21 Aug (J Oughton). SY88/8280 West Lulworth (SY8280); 07 Aug; field, 12 Aug (I Gamble). UKBMS, 2242. 4 (SY6872); field, 11 Jul (S Foote). UKBMS, Binbarrow - S2 (SY4988); field, 2 on 16 Jul, leg. Unknown; field, 3 on 01 Aug, leg. Unknown; field, 17 Aug, leg. Unknown (T Brereton). UKBMS, Binbarrow - S4 (SY4988); field, 23 Jul, leg. Unknown (T Brereton). UKBMS, Portland Tout () - S1 (SY6872); field, 07 Aug (I Laing, G A Laing).
- 70.047 *Nycterosea obstipata* (Fabricius, 1794) **GEM Migrant**
 Recorded in: SU00; SY39; SY49; SY58; SY59; SY66; SY67; SY68; SY79; SY89; SZ07; SZ09. SU00/0609 Hedgerow (SU0609); 01 Nov (M Lowe). SY39/MT 0001 Charmouth (SY3693); 30 Oct (G Sell). SY49/MT 0002 Bothenhampton (SY4892); female on 09 Nov; female on 11 Nov (M S Parsons). SY58/5684 Abbotsbury (SY5684); field, male on 10 Nov (M S Parsons). SY59/5599 Kingcombe Meadows (SY5599); 01 Jul; 03 Jul (D C G Brown). SY67/6870 Isle of Portland (SY6870); 11 Aug; 13 Aug (D Saunders). SY68/6085 Portesham (SY6085); 03 Sep (J Oughton). SY68/MT 0006 Weymouth (SY6682); 22 Aug; 04 Nov (P Harris). SY89/8193 Briantspuddle (SY8193); 06 Nov (J D McMillan). SZ07/MT 0002 Swanage (SZ0278); 03 Nov (P England).
- 70.056 *Catarhoe cuculata* (Hufnagel, 1767) **ROYAL MANTLE** Local
 Recorded in: SY66; SY68; SZ09. SY66/MT 0001 Portland (SY6868); 15 Jul (M Cade). SY68/6085 Portesham (SY6085); 12 Jul (J Oughton). Upwey (SY6684); 02 Jul (P T Kelly).
- 70.057 *Catarhoe rubidata* ([Denis & Schiffermüller], 1775) **RUDDY CARPET** Nb
 Recorded in: SY67; SY79; SZ07. Portland, Broadercroft Quarry (SY6972); 27 Jun (N Spring). SY67/6676 Weymouth (SY6676); 23 Jul (D Foot). SZ07/0377 Durlston Country Park (SZ0377); 01 Jul; 06 Jul (S Nash).
- 70.062 *Epirrhoe rivata* (Hübner, [1813]) **WOOD CARPET** Local
 Recorded in: ST40; SY39; SY68; SY79. ST40/4907 Chedington Wood (ST4907); 01 Aug (M J Hammond). SY39/MT 0001 Charmouth (SY3693); 20 Jun (G Sell). SY68/6085 Portesham (SY6085); 02 Jul (J Oughton).
- 70.063 *Epirrhoe galiata* ([Denis & Schiffermüller], 1775) **GALIUM CARPET** Local
 Recorded in: SY39; SY49; SY67; SY68; SY79; SY88; SZ07. Lyme Regis (SY3392); 11 May; 15 May (M A Ridge). Portland, Broadercroft Quarry (SY6972); 27 Jun (N Spring). SY49/MT 0002 Bothenhampton (SY4892); 15 Jul (M S Parsons). SY67/6870 Isle of Portland (SY6870); 23 Jul; 13 Aug; 30 Aug; 10 Sep (D Saunders). SY67/6972 Portland, Grove (SY6972); 05 Jul; 2 on 10 Jul; 2 on 11 Jul; 02 Aug; 21 Aug (S Foote). SY67/MT 0005 Portland (SY6871); 16 Jun; 09 Jul; 15 Jul; 11 Aug; 3 on 21 Aug; 31 Aug; 07 Sep; 12 Sep (J Williamson). SY68/6085 Portesham (SY6085); 15 Jun; 17 Aug; 19 Aug; 20 Aug; 01 Sep; 04 Sep (J Oughton). SY88/8280 West Lulworth (SY8280); 09 Aug; 12 Aug; 18 Aug; 2 on 18 Sep, leg. D Coleman; 2 on 19 Sep, leg. D Coleman; 20 Sep, leg. D Coleman; 30 Aug (I Gamble). SZ07/0377 Durlston Country Park (SZ0377); 01 Jul; 06 Jul (S Nash).
- 70.064 *Euphyia biangulata* (Haworth, 1809) **CLOAKED CARPET** Nb
 Recorded in: SU00; SY59; SY79. SU00/0604 Holt Heath (SU0604); 02 Aug (M J Hammond). SY59/5599 Kingcombe Meadows (SY5599); 01 Jul (D C G Brown). SY79/MT 0002 Tolpuddle (SY7994); 15 Jul; 16 Jul (J Francis).
- 70.068 *Mesoleuca albicillata* (Linnaeus, 1758) **BEAUTIFUL CARPET**
 Recorded in: ST91. ST91/9618 Monk's Arundell Coppice (ST9618); 15 Jul, leg. P H Sterling (M Jeffes).
- 70.069 *Pelurga comitata* (Linnaeus, 1758) **DARK SPINACH**
 Recorded in: SY99; SZ09. Corfe Hills, Broadstone (SY9996); 22 Aug (J Seawright).
- 70.070 *Larentia clavaria* (Haworth, 1809) **MALLOW**
 Recorded in: SY49; SY67; SZ09. SY49/MT 0002 Bothenhampton (SY4892); 21 Oct (M S Parsons). SY67/6870 Isle of Portland (SY6870); 2 on 09 Oct; 22 Oct; 3 on 22 Oct (S Foote).

- 70.076 *Hydriomena ruberata* (Freyer, [1831]) **RUDDY HIGHFLYER** Local
Recorded in: SZ08. SZ08/02 Studland and Godlingston Heaths (SZ0383); 2 on 04 May, leg. J Seawright (J Seawright, V Giavarini). SZ08/0383 Studland (SZ0383); 2 on 11 May, leg. J Seawright (J Seawright, V Giavarini).
- 70.092 *Eulithis mellinata* (Fabricius, 1787) **SPINACH**
Recorded in: SY58; SY78; SZ09. SY58/5985 Abbotsbury Old Railway (SY5985); netted, 15 Jul (J Oughton). SY78/MT 0008 West Stafford (SY7289); 27 Jun, leg. E S Rose (E S Rose, A Rose).
- 70.098 *Dysstroma citrata* (Linnaeus, 1761) **DARK MARBLED CARPET**
Recorded in: ST40; ST91. ST40/4907 Chedington Wood (ST4907); 2 on 01 Aug (M J Hammond). ST91/9618 Monk's Arundell Coppice (ST9618); 2 on 12 Aug; 12 Aug (M Jeffes). ST91/9717 Cranborne Chase (ST9717); 12 Aug (M Jeffes). ST91/9718 Withywind Coppice (ST9718); 03 Aug (M Jeffes). ST91/9719 Great Shaftesbury Coppice (ST9719); 3 on 02 Aug; 09 Aug (M Jeffes). ST91/9818 Barber's Coppice (ST9818); 06 Aug (M Jeffes). ST91/9819 Shermel Gate Foxbury (ST9819); 2 on 08 Aug; 2 on 05 Aug; 3 on 05 Aug (M Jeffes).
- 70.116 *Venusia blomeri* (Curtis, 1832) **BLOMER'S RIVULET** Nb
Recorded in: SY49. SY49/MT 0002 Bothenhampton (SY4892); 13 Jul (M S Parsons).
- 70.117 *Minoa murinata* (Scopoli, 1763) **DRAB LOOPER** Nb
Recorded in: ST91; SU01. ST91/9015 Stubhampton Bottom (ST9015); field, 13 May (M S Parsons). ST91/9819 West Chase Farm (ST9819); field, 2 on 21 May (M S Parsons). SU01/001 Cranborne Chase SSSI (SU0019); field, 2 on 21 May (M S Parsons).
- 70.123 *Triphosa dubitata* (Linnaeus, 1758) **TISSUE** Local
Recorded in: ST91. ST91/9718 Withywind Coppice (ST9718); 03 Aug (M Jeffes).
- 70.124 *Pareulype berberata* ([Denis & Schiffermüller], 1775) **BARBERRY CARPET** RDB1
Recorded in: ST80. Field, 2 (min) larval on 10 Sep; field, 07 May; field, larval on 10 Sep; field, larval on 07 Jul (M S Parsons, A M Davis).
- 70.130 *Odezia atrata* (Linnaeus, 1758) **CHIMNEY SWEEPER**
Recorded in: SU01; SY98. SY98/9581 Corfe Common (SY9581); 10 on 03 Jul (D E Brown). UKBMS, 1019. 3 (SU0418); field, 09 Jul (L Smith). UKBMS, 1019. 9 (SU0418); field, 2 on 01 Jul (L Smith).
- 70.131 *Mesotype didymata* (Linnaeus, 1758) **TWIN-SPOT CARPET**
Recorded in: ST70; ST91. Higher Ansty (ST7603); 09 Aug (M S Warren). ST91/9618 Monk's Arundell Coppice (ST9618); 3 on 15 Jul; 4 on 15 Jul (M Jeffes).
- 70.134 *Perizoma bifaciata* (Haworth, 1809) **BARRED RIVULET** Local
Recorded in: SY66; SY67; SY78. SY66/MT 0001 Portland (SY6868); 18 Jul (M Cade). SY67/MT 0005 Portland (SY6871); 3 on 09 Jul; 3 on 15 Jul; 31 Jul; 07 Aug; 31 Aug (J Williamson). SY78/MT 0008 West Stafford (SY7289); 22 Aug, leg. E S Rose (E S Rose, A Rose).
- 70.137 *Perizoma albulata* ([Denis & Schiffermüller], 1775) **GRASS RIVULET** Local
Recorded in: ST70; SZ07. ST70/MT 0003 Higher Ansty (ST7603); 13 Jun; 24 Jun (M S Warren). SZ07/0277 Durlston Country Park (SZ0277); field, 30 Jun (M S Parsons). SZ07/0377 Durlston Country Park (SZ0377); 11 Jun (S Nash). SZ07/MT 0002 Swanage (SZ0278); 23 May; 26 May; 20 Aug; 01 Sep (P England).
- 70.143 *Pasiphila chloerata* (Mabille, 1870) **SLOE PUG**
Recorded in: SY67; SZ07. SY67/6676 Weymouth (SY6676); 25 Jun (D Foot). SZ07/0377 Durlston Country Park (SZ0377); 11 Jun (S Nash).
- 70.150 *Eupithecia linariata* ([Denis & Schiffermüller], 1775) **TOADFLAX PUG**
Recorded in: ST61; SY39; SY66; SY67; SZ07; SZ19. ST61/6013 Thornford (ST6013); 25 Jun (N J Howell). SY39/MT 0001 Charmouth (SY3693); 16 Jun (G Sell). SY66/MT 0001 Portland (SY6868); 19 Jun (M Cade). SY67/6870 Isle of Portland (SY6870); 09 Jul (D Saunders). SZ07/MT 0002 Swanage (SZ0278); 15 Jul (P England).
- 70.152 *Eupithecia ultimaria* Boisduval, 1840 **CHANNEL ISLANDS PUG** Local(alien-foodplant)
Recorded in: SY58; SY68; SZ07. Castle Beach (SY5584); field, 26 Aug; field, 2 on 28 Aug; field, 2 on 29 Aug (J Oughton). SY68/MT 0006 Weymouth (SY6682); 21 Aug (P Harris). SZ07/005/41 South Dorset Coast (SMU 41) (SZ0377); 15 Sep (T Vorsterman). SZ07/0377 Durlston Country Park (SZ0377); 06 Jul (S Nash).

- 70.155 *Eupithecia venosata* (Fabricius, 1787) **NETTED PUG** Local
Recorded in: SY49; SZ07. SY49/MT 0002 Bothenhampton (SY4892); 13 Jun (M S Parsons). SZ07/0377 Durlston Country Park (SZ0377); 11 Jun (S Nash).
- 70.166 *Eupithecia simpliciata* (Haworth, 1809) **PLAIN PUG** Local
Recorded in: SY49; SY66; SY67; SY68; SY89; SZ09. Oak Hill, Wareham Forest (SY8893); 15 Jul, leg. M S Parsons (M S Parsons, Z Randle). SY49/MT 0002 Bothenhampton (SY4892); 03 Jul (M S Parsons). SY66/MT 0001 Portland (SY6868); 29 Jul (M Cade). SY67/6676 Weymouth (SY6676); 25 Jun; 19 Jul (D Foot). SY67/6870 Isle of Portland (SY6870); 23 Jul (D Saunders). SY68/MT 0002 Chickerell (SY6580); 19 Aug (C Pinder).
- 70.169 *Eupithecia innotata* (Hufnagel, 1767) **ANGLE-BARRED PUG** Unconfirmed
Recorded in: SY49; SY68; SY79; SY99. Lytchett Bay, Lytchett Way (SY9792); 12 Jun (N J Hull). SY49/MT 0002 Bothenhampton (SY4892); 27 Jun (M S Parsons). SY68/6085 Portesham (SY6085); 30 Jun, leg. P H Sterling; 08 Jul (J Oughton).
- 70.170 *Eupithecia irriguata* (Hübner, [1813]) **MARBLED PUG** Nb
Recorded in: SY59. SY59/5397 Powerstock Common (SY5397); beaten, larval on 27 Jun (D Foot).
- 70.172 *Eupithecia distinctaria* Herrich-Schäffer, 1848 **THYME PUG** Nb
Recorded in: SY66; SY67. SY66/6768 Isle of Portland (SY6768); 22 Jun (C Lewis). SY67/6870 Isle of Portland (SY6870); 15 Jul (D Saunders).
- 70.177 *Eupithecia satyrata* (Hübner, [1813]) **SATYR PUG**
Recorded in: SY98; SZ07. SY98/9787 Arne (SY9787); 27 May, leg. L Phillips (L Phillips, G Hinton, J Stockwell). SZ07/0377 Durlston Country Park (SZ0377); 06 Jul (S Nash).
- 70.181 *Eupithecia valerianata* (Hübner, [1813]) **VALERIAN PUG** Nb
Recorded in: SY59; SY66; SY67; SY79; SZ07. SY59/5599 Kingcombe Meadows (SY5599); 03 Jul (D C G Brown). SY66/6768 Isle of Portland (SY6768); 20 Jun; 21 Jun (C Lewis). SY67/6870 Isle of Portland (SY6870); 30 May; 16 Jun (D Saunders). SZ07/0377 Durlston Country Park (SZ0377); 11 Jun; 06 Jul (S Nash). SZ07/MT 0002 Swanage (SZ0278); 10 Jul (P England).
- 70.186 *Eupithecia millefoliata* Rössler, 1866 **YARROW PUG** Nb
Recorded in: SY59. SY59/5599 Kingcombe Meadows (SY5599); 03 Jul (D C G Brown).
- 70.188 *Eupithecia succenturiata* (Linnaeus, 1758) **BORDERED PUG**
Recorded in: SY78; SY79; SY89; SZ09. Broadmayne, Spring Gardens (SY7387); 20 Jul (P Bruce-Jones). SY79/MT 0002 Tolpuddle (SY7994); 23 Jul (J Francis). SY89/8193 Briantspuddle (SY8193); 15 Jul (J D McMillan).
- 70.206 *Abraxas sylvata* (Scopoli, 1763) **CLOUDED MAGPIE** Local
Recorded in: ST80; SY49; SY58; SY98. ST80/MT 0001 Winterborne Stickland (ST8305); 09 Oct (L de Whalley). SY49/MT 0002 Bothenhampton (SY4892); 30 Aug (M S Parsons). SY58/5388 Puncknowle (SY5388); 28 Jul (M Hetherington). SY98/9787 Arne (SY9787); 26 Jul, leg. L Phillips (L Phillips, G Hinton, J Stockwell).
- 70.211 *Macaria notata* (Linnaeus, 1758) **PEACOCK MOTH** Local
Recorded in: ST91. ST91/9618 Monk's Arundell Coppice (ST9618); 12 Aug (M Jeffes).
- 70.218 *Chiasmia clathrata* (Linnaeus, 1758) **LATTICED HEATH**
Recorded in: SY49; SY78; SY98; SZ07. Dorset (SY4892); 12 Sep (M S Parsons). SY49/MT 0002 Bothenhampton (SY4892); 12 Sep (M S Parsons). SY98/9781 Little Woolgarston (SY9781); 13 Sep (R Knight). SZ07/0377 Durlston Country Park (SZ0377); 01 Jul (S Nash). Tadnoll NR, (SY7987); field, 20 May (A Kirby).
- 70.221 *Cepphis advenaria* (Hübner, 1790) **LITTLE THORN** Nb
Recorded in: ST91; SY39; SY68; SY79; SY88; SY89; SZ09. Black Down, Hardy Monument (SY6188); field, 17 Jun (J Oughton). ST91/9819 West Chase Farm (ST9819); field, 21 May (M S Parsons). SY39/MT 0001 Charmouth (SY3693); 16 Jun; 09 Jul (G Sell). SY68/6187 Blackdown (SY6187); netted, 15 Jun (J Oughton). SY88/MT 0001 East Lulworth (SY8583); 2 on 23 Jun; 24 Jun, leg. Z Randle; 06 Jul (M S Parsons). SY89/8193 Briantspuddle (SY8193); 26 May; 30 May (J D McMillan).
- 70.233 *Ennomos quercinaria* (Hufnagel, 1767) **AUGUST THORN** Local
Recorded in: ST60; ST70; ST91; SY78; SY79; SZ09. Dorset (SY7685); 3 on 12 Sep (N Smithson). Higher Ansty (ST7603); 19 Aug (M S Warren). ST60/6108 Leigh, Wesley House (ST6108); 11 Aug; 30 Aug (G A Nash). ST70/MT

- 0003 Higher Ansty (ST7603); 10 Sep (M S Warren). ST91/9618 Monk's Arundell Coppice (ST9618); 28 Jul (M Jeffes). Whitehill (SY7593); 08 Aug (R M Porter).
- 70.236 *Ennomos erosaria* ([Denis & Schiffermüller], 1775) **SEPTEMBER THORN**
Recorded in: ST60; ST61; SU00; SY39; SY78; SZ09; SZ19. ST60/6108 Leigh, Wesley House (ST6108); 18 Aug; 30 Aug; 31 Aug; 2 on 12 Sep; 15 Sep (G A Nash). ST61/6610 Ryewater Farm (ST6610); 5 on 04 Sep; 5 on 06 Aug; 2 on 21 Sep (W T Franklin). SU00/0604 Holt Heath (SU0604); 6 on 02 Aug (M J Hammond). SU00/0609 Hedgerow (SU0609); 14 Jul; 2 on 22 Jul; 03 Aug; 04 Aug; 5 on 08 Aug; 2 on 10 Aug; 12 Aug; 4 on 26 Aug; 30 Aug; 2 on 07 Sep; 2 on 08 Sep; 3 on 18 Sep; 03 Oct; 21 Oct; 01 Nov (M Lowe). SY39/MT 0001 Charmouth (SY3693); 2 on 16 Jun (G Sell). SY78/MT 0008 West Stafford (SY7289); 05 Sep, leg. E S Rose (E S Rose, A Rose).
- 70.262 *Selidosema brunnearia* (Villers, 1789) **BORDERED GREY** Na
Recorded in: SU00; SY88. SU00/0604 Holt Heath (SU0604); 02 Aug (M J Hammond). SY88/005/19 South Dorset Coast (SMU 19) (SY8280); field, 2 on 29 Aug; 4 on 01 Sep; field, 02 Sep (M Bellingham). SY88/8086 Winfrith Heath (SY8086); 17 Aug (R Ford).
- 70.267 *Hypomecis roboraria* ([Denis & Schiffermüller], 1775) **GREAT OAK BEAUTY** Nb
Recorded in: ST91. ST91/9717 Cranborne Chase (ST9717); 24 Jun (M Jeffes).
- 70.274 *Aethalura punctulata* ([Denis & Schiffermüller], 1775) **GREY BIRCH**
Recorded in: SY68; SY79; SZ09. SY68/MT 0006 Weymouth (SY6682); 04 Jun (P Harris). Whitehill (SY7593); 09 May (R M Porter).
- 70.287 *Charissa obscurata* ([Denis & Schiffermüller], 1775) **ANULET** Local
Recorded in: SY67; SY88; SY98. SY67/6870 Isle of Portland (SY6870); 17 Aug (D Saunders). SY67/MT 0005 Portland (SY6871); 2 on 21 Aug (J Williamson). SY88/8280 West Lulworth (SY8280); 20 Sep, leg. D Coleman (D Coleman, G Geen). SY98/9585 Slepe Heath (SY9585); 20 Jul (J C Winterbottom). SY98/9586 Slepe Heath (SY9586); 20 Jul, leg. V Giavarini (V Giavarini, J Seawright, J C Winterbottom).
- 70.306 *Chlorissa viridata* (Linnaeus, 1758) **SMALL GRASS EMERALD** Na
Recorded in: ST70; SU00; SY78; SY98; SZ08; SZ09. ST70/MT 0003 Higher Ansty (ST7603); 05 Jul; 09 Jul (M S Warren). SU00/0604 Holt Heath (SU0604); field, larval on 19 Aug (M S Parsons). Sutton Poyntz (SY7083); 16 Jul (C Marsh). SY98/9585 Slepe Farm (SY9585); field, 12 Jun (A Musgrove). SY98/9585 Slepe Heath (SY9585); 2 on 22 Jul, leg. M S Parsons; netted, 2 larval on 22 Jul, leg. M S Parsons (M S Parsons, A Foster, A M Davis). SY98/9586 Slepe Heath (SY9586); field, larval on 28 Jul (M S Parsons). SY98/9787 Arne (SY9787); 02 Jul, leg. L Phillips (L Phillips, G Hinton, J Stockwell). SZ08/0285 Studland (SZ0285); field, 09 Jun, leg. J Seawright (J Seawright, V Giavarini). SZ08/0386 Roadside to South Haven Flats, Studland Heath (SZ0386); 08 Jun, leg. J Seawright (J Seawright, V Giavarini, J C Winterbottom).
- 71.001 *Thaumetopoea processionea* (Linnaeus, 1758) **OAK PROCESSIONARY** Vagrant/Accidental
Recorded in: SY49. SY49/MT 0002 Bothenhampton (SY4892); male on 22 Aug (M S Parsons).
- 71.006 *Furcula bicuspis* (Borkhausen, 1790) **ALDER KITTEN** Local
Recorded in: ST40; SY68. ST40/MT 0002 Beaminster (ST4801); 09 May, leg. M Raper; 22 May, leg. M Raper; 25 May, leg. M Raper; 3 on 04 Jun, leg. M Raper (M Raper, D Raper). SY68/6982 Preston, Ringstead Crescent (SY6982); 04 Jun ('Ricky' Lambert).
- 71.023 *Odontosia carmelita* (Esper, [1798]) **SCARCE PROMINENT** Local
Recorded in: SU00; SZ09. SU00/0609 Hedgerow (SU0609); 01 May (M Lowe).
- 71.028 *Clostera pigra* (Hufnagel, 1766) **SMALL CHOCOLATE-TIP** Nb
Recorded in: SU00. SU00/0604 Holt Heath (SU0604); 02 Aug (M J Hammond).
- 72.006 *Hypena obsitalis* (Hübner, [1813]) **BLOXWORTH SNOUT** RDB3
Recorded in: SY67; SZ07. SY67/6676 Weymouth (SY6676); 15 Jul (D Foot). SZ07/005/41 South Dorset Coast (SMU 41) (SZ0377); 26 Oct, leg. A Millar; 15 Sep (A Millar, S Nash). SZ07/0377 Durlston Country Park (SZ0377); 25 Oct (S Nash).
- 72.007 *Hypena crassalis* (Fabricius, 1787) **BEAUTIFUL SNOUT** Local
Recorded in: SU00; SY68; SY78; SY79; SY98. Broadmayne, Spring Gardens (SY7387); 16 Jul (P Bruce-Jones). Hurst Heath (SY7889); 14 Jun; 16 Jun (R Hiley). SU00/0609 Hedgerow (SU0609); 12 Jul; 2 on 14 Jul (M Lowe). SY79/MT

- 0002 Tolpuddle (SY7994); 14 Jul (J Francis). SY98/9787 Arne (SY9787); 19 Jul, leg. L Phillips (L Phillips, G Hinton, J Stockwell). Upwey (SY6684); 29 Jun (P T Kelly).
- 72.009 *Leucoma salicis* (Linnaeus, 1758) **WHITE SATIN** Local
Recorded in: SY58; SY66; SY67; SY68; SY78; SY79; SY89; SY99; SZ07; SZ09. Broadmayne, Spring Gardens (SY7387); 12 Jul (P Bruce-Jones). Lytchett Bay, Lytchett Way (SY9792); 06 Aug (N J Hull). SY58/5388 Puncknowle (SY5388); 11 Jul; 16 Jul (M Hetherington). SY58/5784 Abbotsbury (SY5784); 04 Jul, leg. J Oughton (J Oughton, M Hetherington). SY66/MT 0001 Portland (SY6868); 01 Jul (M Cade). SY67/6676 Weymouth (SY6676); 01 Aug (D Foot). SY67/6870 Isle of Portland (SY6870); 19 Jul (D Saunders). SY68/6085 Portesham (SY6085); 02 Jul; 03 Jul; 2 on 16 Jul (J Oughton). SY68/MT 0006 Weymouth (SY6682); 14 Jul; 15 Jul; 21 Jul (P Harris). SY79/MT 0002 Tolpuddle (SY7994); 16 Jul (J Francis). SY89/8193 Briantspuddle (SY8193); 12 Jul (J D McMillan). SZ07/0377 Durlston Country Park (SZ0377); 01 Jul (S Nash). Upwey (SY6684); 10 Jul; 15 Jul; 16 Jul (P T Kelly).
- 72.011 *Lymantria dispar* (Linnaeus, 1758) **GYPSY MOTH** Vagrant/Accidental
Recorded in: SY39. SY39/MT 0001 Charmouth (SY3693); 21 Aug (G Sell).
- 72.016 *Dicallomera fascelina* (Linnaeus, 1758) **DARK TUSSOCK** Local
Recorded in: SU00; SY78; SY89; SY98; SZ08. SU00/0604 Holt Heath (SU0604); 2 on 02 Aug (M J Hammond). SY78/7083 Weymouth (SY7083); 04 Jun (J A Newbould). SY89/04 Morden Bog & Hyde Heath (SY8890); 18 Jul, leg. C M Manley (C M Manley, M S Parsons). SY98/9585 Slepe Heath (SY9585); 2 on 20 Jul; 20 Jul (J C Winterbottom). SY98/9586 Slepe Heath (SY9586); 20 Jul; 2 on 20 Jul (J Seawright). SY98/9787 Arne (SY9787); 15 Jul, leg. L Phillips; 18 Jul, leg. L Phillips; 2 on 19 Jul, leg. L Phillips; 20 Jul, leg. L Phillips; 21 Jul, leg. L Phillips; 22 Jul, leg. L Phillips; 2 on 26 Jul, leg. L Phillips; 29 Jul, leg. L Phillips; 18 Aug, leg. L Phillips (L Phillips, G Hinton, J Stockwell). SZ08/0386 South Haven Point (SZ0386); 16 Jul (J Seawright).
- 72.025 *Parasemia plantaginis* (Linnaeus, 1758) **WOOD TIGER** Local
Recorded in: ST60; ST81; SU01; SY58. Little Cheney (SY5589); 17 Aug (H Willmott). ST60/6000 Lankham Bottom (ST6000); field, 23 Jun (N J Howell). ST60/6100 Lankham Bottom (ST6100); field, 05 Jun; field, 20 on 16 Jun; field, 20 on 24 Jun (M S Parsons). ST60/6702 Cerne Abbas (ST6702); field, 27 May (N J Howell). ST81/8818 Clubmen's Down (ST8818); field, 17 May (A Kirby). UKBMS, 1019. 9 (SU0418); field, 11 Jun; field, 18 Jun; field, 01 Jul (L Smith).
- 72.034 *Utetheisa pulchella* (Linnaeus, 1758) **CRIMSON SPECKLED** Migrant
Recorded in: SY68. SY68/6085 Portesham (SY6085); 16 Dec (J Oughton).
- 72.047 *Eilema caniola* (Hübner, [1808]) **HOARY FOOTMAN** Nb
Recorded in: SY78; SY88; SY98; SZ07. Broadmayne, Spring Gardens (SY7387); 16 Jul; 02 Aug; 04 Aug (P Bruce-Jones). East Creech Farm (SY9282); outside light, 12 Aug (R Terry). SY88/8280 West Lulworth (SY8280); 08 Aug (I Gamble). SZ07/0377 Durlston Country Park (SZ0377); 01 Jul; 06 Jul (S Nash).
- 72.060 *Hypenodes humidalis* Doubleday, 1850 **MARSH OBLIQUE-BARRED** Nb
Recorded in: SY89; SZ08; SZ09. Oak Hill, Wareham Forest (SY8893); 15 Jul, leg. M S Parsons (M S Parsons, Z Randle). SY89/04 Morden Bog & Hyde Heath (SY8890); 18 Jul, leg. C M Manley (C M Manley, M S Parsons). SZ08/0386 South Haven Point (SZ0386); 16 Jul (J Seawright).
- 72.062 *Schrankia taenialis* (Hübner, [1809]) **WHITE-LINE SNOOT** Nb
Recorded in: ST91. ST91/9618 Monk's Arundell Coppice (ST9618); 15 Jul (M Jeffes). ST91/9719 Great Shaftesbury Coppice (ST9719); 09 Aug (M Jeffes). ST91/9819 Shermel Gate Foxbury (ST9819); 05 Aug (M Jeffes).
- 72.065 *Tathorhynchus exsiccata* (Lederer, 1855) **LEVANT BLACKNECK** Rare migrant
Recorded in: SY39; SY66. SY39/MT 0001 Charmouth (SY3693); 10 Jul (G Sell). SY66/MT 0001 Portland (SY6868); 27 Dec (M Cade).
- 72.066 *Parascotia fuliginaria* (Linnaeus, 1761) **WAVED BLACK** Nb
Recorded in: SU00. SU00/0609 Hedgerow (SU0609); 06 Jul (M Lowe).
- 72.073 *Eublemma parva* (Hübner, [1808]) **SMALL MARBLED** Migrant
Recorded in: ST51; ST60; SU00; SY66; SY67; SY89; SY99; SZ09; SZ19. Lytchett Bay, Lytchett Way (SY9792); 12 Jul (N J Hull). ST51/5910 Yetminster (ST5910); 10 Jul (M Hetherington). ST60/6108 Leigh, Wesley House (ST6108); 10 Jul (G A Nash). SU00/0609 Hedgerow (SU0609); 05 Jul (M Lowe). SY66/MT 0001 Portland (SY6868); 05 Jul (M Cade). SY67/6676 Weymouth (SY6676); 01 Jul (D Foot). SY67/6870 Isle of Portland (SY6870); 15 Jul (D Saunders). SY67/6972 Portland, Grove (SY6972); 10 Jul (S Foote). SY67/xxxx Chickerell (SY67); 10 Jul; 15 Jul; 19 Jul (M Cade). SY89/04 Morden Bog & Hyde Heath (SY8890); 18 Jul, leg. C M Manley (C M Manley, M S Parsons).

- 72.074 *Eublemma purpurina* ([Denis & Schiffermüller], 1775) **BEAUTIFUL MARBLED** Migrant
Recorded in: SY58. SY58/5387 West Bexington (SY5387); 19 Aug (D Foot).
- 72.076 *Catocala fraxini* (Linnaeus, 1758) **CLIFDEN NONPAREIL** Migrant
Recorded in: ST80; SU00; SY49; SY58; SY78; SY79; SY89; SZ07; SZ09. ST80/MT 0001 Winterborne Stickland (ST8305); 10 Oct (L de Whalley). SU00/0609 Hedgerow (SU0609); 03 Oct; 02 Nov; 04 Nov (M Lowe). SY49/MT 0002 Bothenhampton (SY4892); 08 Sep (M S Parsons). SY58/5387 West Bexington (SY5387); 10 Sep (D Foot). SY78/MT 0008 West Stafford (SY7289); 17 Oct, leg. E S Rose (E S Rose, A Rose). SY89/8193 Briantspuddle (SY8193); 16 Sep; 18 Sep; 01 Oct; 10 Oct; 19 Oct (J D McMillan). SZ07/0277 Durlston Country Park (SZ0277); 17 Oct (N Sherman). SZ09/MT 0012 Poole (SZ0095); 20 Sep (A H Bicker). Whitehill (SY7593); 14 Oct (R M Porter).
- 72.081 *Catocala sponsa* (Linnaeus, 1767) **DARK CRIMSON UNDERWING** RDB2
Recorded in: SY39. SY39/MT 0001 Charmouth (SY3693); 01 Jul; 30 Aug (G Sell).
- 73.003 *Trichoplusia ni* (Hübner, [1803]) **NI MOTH** Migrant
Recorded in: SY39; SY49; SY66; SY67; SY68; SY79; SZ07; SZ09; SZ19. Dorset (SY6868); 11 Sep (R W Steedman). Mandeville Close, Weymouth (SY6577); 17 Aug (I Middlebrook). SY39/MT 0001 Charmouth (SY3693); 11 Jun (G Sell). SY49/MT 0002 Bothenhampton (SY4892); 12 Jun; 17 Jul; 27 Dec (M S Parsons). SY66/6768 Isle of Portland (SY6768); field, 13 Jun (A Musgrove). SY66/MT 0001 Portland (SY6868); 14 Aug (M Cade). SY67/6676 Weymouth (SY6676); 13 Aug (D Foot). SY67/xxxx Chickereil (SY67); 17 Jun; 18 Jun; 19 Aug (M Cade). SY68/6085 Portesham (SY6085); 13 Jun; 17 Jun; 13 Aug; 3 on 21 Aug; 22 Aug; 2 on 27 Dec (J Oughton). SY68/6982 Preston, Ringstead Crescent (SY6982); 16 Aug ('Ricky' Lambert). SY68/MT 0001 Dorchester (SY6889); 23 Jun; 11 Aug; 21 Aug (J E Down). SY68/MT 0006 Weymouth (SY6682); 12 Jun; 14 Jul; 09 Aug; 2 on 13 Aug; 16 Aug (P Harris). SY79/MT 0002 Tolpuddle (SY7994); 11 Jun (J Francis). SZ07/0377 Durlston Country Park (SZ0377); 3 on 11 Jun; 27 Dec (S Nash).
- 73.010 *Macdunnoughia confusa* (Stephens, 1850) **DEWICK'S PLUSIA** Rare migrant
Recorded in: SY49; SY79. SY49/4892 Walditch (SY4892); 11 Sep (M S Parsons).
- 73.026 *Deltote uncula* (Clerck, 1759) **SILVER HOOK** Local
Recorded in: SU00. SU00/0604 Holt Heath (SU0604); 02 Aug (M J Hammond).
- 73.0301 *Aedia funesta* (Esper, [1786]) **DRUID** Vagrant/Accidental
Recorded in: SZ07. SZ07/0377 Durlston Country Park (SZ0377); 01 Jul **New VC Record**. (S Nash).
- 73.031 *Tyta luctuosa* ([Denis & Schiffermüller], 1775) **FOUR-SPOTTED** Na
Recorded in: SY67. SY67/6870 Isle of Portland (SY6870); 23 Jul; 02 Aug; 05 Aug; 12 Aug (D Saunders).
- 73.033 *Diloba caeruleocephala* (Linnaeus, 1758) **FIGURE OF EIGHT**
Recorded in: ST61; SY58. ST61/6610 Ryewater Farm (ST6610); 07 Oct (W T Franklin). SY58/5388 Puncknowle (SY5388); 30 Oct (M Hetherington).
- 73.034 *Moma alpium* (Osbeck, 1778) **SCARCE MERVEILLE DU JOUR** RDB3
Recorded in: SU00; SZ09; SZ19. St Leonards (SZ0594); 15 Jun (S Dutton). SU00/0100 Wimborne Minster (SU0100); 21 Jun (L Davy). SU00/0609 Hedgerow (SU0609); 3 on 11 Jun; 17 Jun; 06 Jul (M Lowe).
- 73.038 *Acronicta psi* (Linnaeus, 1758) **GREY DAGGER**
Recorded in: SY58; SZ19. SY58/5685 Abbotsbury Gardens (SY5685); field, larval on 25 Oct (N Pinder).
- 73.050 *Cucullia absinthii* (Linnaeus, 1761) **WORMWOOD** Nb
Recorded in: SY66; SY67. SY66/MT 0001 Portland (SY6868); 09 Aug (M Cade). SY67/6972 Portland, Grove (SY6972); 05 Aug; 12 Aug (S Foote).
- 73.053 *Cucullia chamomillae* ([Denis & Schiffermüller], 1775) **CHAMOMILE SHARK** Local
Recorded in: ST60; SY39; SY67. ST60/6108 Leigh, Wesley House (ST6108); 22 Apr (G A Nash). SY39/MT 0001 Charmouth (SY3693); 13 Jun; 15 Jun (G Sell). SY67/6870 Isle of Portland (SY6870); 05 Jun (D Saunders).
- 73.065 *Asteroscopus sphinx* (Hufnagel, 1766) **SPRAWLER**
Recorded in: ST61; SY79; SY88. ST61/6610 Ryewater Farm (ST6610); 11 Nov (W T Franklin). SY88/MT 0001 East Lulworth (SY8583); 04 Nov (M S Parsons).

- 73.075 *Heliothis nubigera* Herrich-Schäffer, 1851 **EASTERN BORDERED STRAW** Vagrant/Accidental
Recorded in: SY66; SY68. SY66/MT 0001 Portland (SY6868); 18 Dec (M Cade). SY68/MT 0006 Weymouth (SY6682); 17 Dec (P Harris).
- 73.091 *Elaphria venustula* (Hübner, 1790) **ROSY MARBLED** Nb
Recorded in: SY89; SY98; SZ09. Oak Hill, Wareham Forest (SY8893); 15 Jul, leg. M S Parsons (M S Parsons, Z Randle). SY98/9787 Arne (SY9787); 21 Jun, leg. L Phillips (L Phillips, G Hinton, J Stockwell).
- 73.093 *Caradrina kadenii* (Freyer, [1836]) **CLANCY'S RUSTIC** Migrant
Recorded in: SY68; SY78. Broadmayne, Spring Gardens (SY7387); 30 Oct (P Bruce-Jones). SY68/MT 0006 Weymouth (SY6682); 08 Oct (P Harris).
- 73.100 *Chilodes maritima* (Tauscher, 1806) **SILKY WAINSCOT** Local
Recorded in: SY58; SY68; SY99; SZ09. Lytchett Bay, Lytchett Way (SY9792); 12 Jun (N J Hull). SY58/5088 Cogden Beach (SY5088); 27 Aug (J A Newbould). SY68/6085 Portesham (SY6085); 21 Jul (J Oughton). SY68/MT 0006 Weymouth (SY6682); 01 Jul; 15 Jul (P Harris).
- 73.119 *Helotropha leucostigma* (Hübner, [1808]) **CRESCENT** Local
Recorded in: ST40; SY66; SY78; SY98; SZ09. ST40/4907 Chedington Wood (ST4907); 01 Aug (M J Hammond). SY66/MT 0001 Portland (SY6868); 16 Aug (M Cade). SY78/7083 Weymouth (SY7083); 17 Jul (J A Newbould). SY98/9585 Sleppe Heath (SY9585); 22 Jul, leg. M S Parsons (M S Parsons, A Foster, A M Davis).
- 73.137 *Arenostola phragmitidis* (Hübner, [1803]) **FEN WAINSCOT** Local
Recorded in: SY58; SY67; SY98; SZ19. SY58/5784 Abbotsbury (SY5784); 04 Jul, leg. J Oughton (J Oughton, M Hetherington). SY67/6676 Weymouth (SY6676); 15 Jul (D Foot). SY79/MT 0002 Tolpuddle (SY7994); 02 Aug (J Francis). SY98/9787 Arne (SY9787); 17 Jul, leg. L Phillips (L Phillips, G Hinton, J Stockwell).
- 73.148 *Photodes morrisii* (Dale, 1837) **MORRIS'S WAINSCOT** RDB1
Recorded in: SY39. SY39/MT 0001 Charmouth (SY3693); 24 Jul (G Sell). SY39/xxxx Lyme Regis (SY39); field, 3 on 24 Jun (C Lewis).
- 73.151 *Globia sparganii* (Esper, 1789) **WEBB'S WAINSCOT** Nb
Recorded in: SY68; SY78; SY98; SZ09. SY68/MT 0006 Weymouth (SY6682); 28 Jul; 11 Aug; 18 Sep (P Harris). SY78/7083 Weymouth (SY7083); 06 Aug (J Campbell). SY98/9787 Arne (SY9787); 27 Aug, leg. L Phillips (L Phillips, G Hinton, J Stockwell).
- 73.157 *Apamea anceps* ([Denis & Schiffmüller], 1775) **LARGE NUTMEG** Local
Recorded in: ST61; SY79. ST61/6013 Thornford (ST6013); 3 on 04 Jun; 3 on 10 Jun; 17 Jun; 22 Jun; 25 Jun (N J Howell). SY79/MT 0002 Tolpuddle (SY7994); 11 Jun (J Francis).
- 73.164 *Apamea sublustris* (Esper, 1788) **REDDISH LIGHT ARCHES** Local
Recorded in: ST70; ST91; SY67; SY68; SY79; SY98; SY99; SZ07. Mandeville Close, Weymouth (SY6577); 15 Jul (I Middlebrook). ST70/MT 0003 Higher Ansty (ST7603); 05 Jul (M S Warren). ST91/9618 Monk's Arundell Coppice (ST9618); 15 Jul (M Jeffes). SY98/9787 Arne (SY9787); 28 Jun, leg. L Phillips (L Phillips, G Hinton, J Stockwell). SY99/9794 Corfe Mullen (SY9794); 27 Jun (S Wright). SZ07/0377 Durlston Country Park (SZ0377); 01 Jul; 06 Jul (S Nash). SZ07/MT 0002 Swanage (SZ0278); 16 Jun; 20 Jun; 3 on 24 Jun; 25 Jun; 4 on 10 Jul; 14 Jul; 5 on 15 Jul; 18 Jul (P England). Upwey (SY6684); 15 Jul (P T Kelly).
- 73.170 *Mesapamea didyma* (Esper, 1788) **LESSER COMMON RUSTIC**
Recorded in: SZ07; SZ19. SZ07/0377 Durlston Country Park (SZ0377); male on 09 Oct, gen. det. (M J Hammond).
- 73.173 *Oligia strigilis* (Linnaeus, 1758) **MARBLED MINOR**
Recorded in: ST90; ST91; SU00; SY59; SZ19. Ash Plantation Copse Tarrant Monkton (ST9508); male on 16 Jun, gen. det. (D J Evans). Bagmans Cospe Old Down Woodlands (SU0309); male on 16 Jun, gen. det. (D J Evans). Haythorne Common Haythorne Horton (SU0307); male on 16 Jun, gen. det. (D J Evans). Oxleaze Copse Chalbury (SU0107); male on 16 Jun, gen. det. (D J Evans). Sovell Down Gussage St Michael (ST9810); male on 16 Jun, gen. det. (D J Evans). SY59/5691 North Barn Farm (SY5691); male on 19 Jun, gen. det. (R Creighton). Thickthorn Shelterbelt Chettle (ST9512); male on 16 Jun, gen. det. (D J Evans).
- 73.178 *Leucochlaena oditis* (Hübner, [1822]) **BEAUTIFUL GOTHIC** RDB3
Recorded in: SY66; SY67; SZ07; SZ08. Dorset (SY6868); 6 on 11 Sep (R W Steedman). SY67/6870 Isle of Portland (SY6870); 2 on 29 Sep; 01 Oct (S Foote). SY67/MT 0005 Portland (SY6871); 4 on 20 Sep; 2 on 03 Oct; 3 on 08 Oct (J

- Williamson). SZ07/005/41 South Dorset Coast (SMU 41) (SZ0377); 26 Oct, leg. A Millar, S Nash; 15 Sep (A Millar). SZ07/0377 Durlston Country Park (SZ0377); 2 on 09 Oct; 6 on 08 Oct; 2 on 25 Oct (M J Hammond). SZ08/02 Studland and Godlingston Heaths (SZ0383); 28 Oct (A Millar). SZ08/0383 Studland (SZ0383); 28 Oct (A Millar).
- 73.188 *Agrochola helvola* (Linnaeus, 1758) **FLOUNCED CHESTNUT**
Recorded in: SY39; SY79; SY89. SY39/MT 0001 Charmouth (SY3693); 18 Oct; 27 Oct; 02 Nov (G Sell). SY89/8193 Briantspuddle (SY8193); 10 Oct; 28 Oct (J D McMillan).
- 73.197 *Conistra rubiginea* ([Denis & Schiffermüller], 1775) **DOTTED CHESTNUT** Nb
Recorded in: ST60; ST61; SU00; SY49; SY68; SY78; SY79; SZ07; SZ09. Bolehays Copse Woodlands (SU0309); 15 Apr (D J Evans). Broadmayne, Spring Gardens (SY7387); 12 Apr (P Bruce-Jones). Mill Hill Wood Moor Crichel (SU0008); 15 Apr (D J Evans). Oxleaze Copse Chalbury (SU0107); 15 Apr (D J Evans). ST60/6108 Leigh, Wesley House (ST6108); 16 Mar (G A Nash). ST61/6013 Thornford (ST6013); 09 Apr; 15 Apr (N J Howell). SY49/MT 0002 Bothenhampton (SY4892); 06 Apr (M S Parsons). SY68/MT 0006 Weymouth (SY6682); 02 Apr (P Harris). SZ07/MT 0002 Swanage (SZ0278); 07 Nov (P England). SZ09/MT 0012 Poole (SZ0095); 13 Apr (A H Bicker). Whitehill (SY7593); 21 Mar (R M Porter).
- 73.200 *Lithophane semibrunnea* (Haworth, 1809) **TAWNY PINION** Local
Recorded in: ST60; ST80; SY68; SY79; SZ09; SZ19. ST60/6108 Leigh, Wesley House (ST6108); 22 Apr (G A Nash). ST80/MT 0001 Winterborne Stickland (ST8305); 16 Apr (L de Whalley). SY68/MT 0002 Chickerell (SY6580); 14 Mar (C Pinder). SY68/MT 0006 Weymouth (SY6682); 12 Mar; 16 Apr (P Harris). SY79/MT 0002 Tolpuddle (SY7994); 07 Apr (J Francis).
- 73.213 *Ipimorpha subtusa* ([Denis & Schiffermüller], 1775) **OLIVE** Local
Recorded in: SY68; SY79; SZ09. SY68/6085 Portesham (SY6085); 21 Aug (J Oughton).
- 73.223 *Dryobota labecula* (Esper, 1788) **OAK RUSTIC** Rare migrant
Recorded in: SY49; SY58; SY67; SY68; SY79; SZ07; SZ09. SY49/MT 0002 Bothenhampton (SY4892); 07 Nov (M S Parsons). SY58/5388 Puncknowle (SY5388); 11 Nov (M Hetherington). SY67/6778 Weymouth (SY6778); 3 on 25 Oct; 31 Oct; 2 on 02 Nov (S Hales). SY68/6683 Broadwey, Lorton Lane (SY6683); 08 Nov (J Gifford). SY68/6982 Preston, Ringstead Crescent (SY6982); 27 Oct ('Ricky' Lambert). SY68/MT 0006 Weymouth (SY6682); 28 Oct; 2 on 05 Nov; 3 on 06 Nov; 07 Nov; 08 Nov (P Harris). SZ07/005/41 South Dorset Coast (SMU 41) (SZ0377); 5 on 26 Oct, leg. A Millar, S Nash (A Millar). SZ07/0377 Durlston Country Park (SZ0377); 09 Oct; 2 on 08 Oct; 15 on 25 Oct; 70 on 03 Nov, leg. S Nash (M J Hammond). SZ07/MT 0002 Swanage (SZ0278); 06 Oct; 3 on 20 Oct; 26 Oct; 28 Oct; 3 on 29 Oct; 2 on 31 Oct; 5 on 03 Nov; 10 on 04 Nov; 6 on 07 Nov; 13 Nov (P England).
- 73.227 *Dryobotodes tenebrosa* (Esper, 1789) **SOMBRE BROCADE** Migrant
Recorded in: SY58; SZ07. SY58/5685 Knolls (SY5685); 3 on 28 Sep; 5 on 29 Sep (J Clarke). SZ07/005/41 South Dorset Coast (SMU 41) (SZ0377); 2 on 26 Oct, leg. A Millar, S Nash; 18 Sep (A Millar). SZ07/0377 Durlston Country Park (SZ0377); 5 on 08 Oct; 2 on 25 Oct; 15 on 02 Oct (S Whitehouse). SZ07/MT 0002 Swanage (SZ0278); 2 on 03 Oct; 2 on 04 Oct (P England).
- 73.229 *Trigonophora flammea* (Esper, 1785) **FLAME BROCADE** Migrant
Recorded in: SY67. SY67/6870 Isle of Portland (SY6870); 29 Sep; 09 Oct; 13 Oct; 2 on 15 Oct; 15 Oct; 18 Oct; 19 Oct; 20 Oct; 21 Oct; 22 Oct; 31 Oct; 01 Nov (S Foote). SY67/MT 0005 Portland (SY6871); 27 Oct (J Williamson).
- 73.230 *Aporophyla australis* (Boisduval, 1829) **FEATHERED BRINDLE** Nb
Recorded in: SY58; SY67; SY68; SY97; SZ07; SZ08. 3 Castle View, Langton Matravers (SY9978); 09 Oct; 3 on 10 Oct; 2 on 11 Oct; 13 Oct (T Wiffen, S Westerberg). SY58/5685 Knolls (SY5685); 10 on 28 Sep (J Clarke). SY58/5784 Abbotsbury Swannery (SY5784); 2 on 17 Sep (J Oughton). SY67/6870 Isle of Portland (SY6870); 18 Sep; 2 on 19 Sep; 2 on 20 Sep; 6 on 21 Sep; 2 on 26 Sep; 2 on 27 Sep; 3 on 28 Sep; 4 on 29 Sep; 30 Sep; 01 Oct; 6 on 02 Oct; 6 on 03 Oct; 6 on 04 Oct; 3 on 09 Oct; 15 Oct; 16 Oct; 17 Oct; 2 on 19 Oct; 22 Oct (S Foote). SY67/MT 0005 Portland (SY6871); 07 Sep; 2 on 12 Sep; 2 on 20 Sep; 7 on 03 Oct; 08 Oct (J Williamson). SY68/MT 0006 Weymouth (SY6682); 03 Oct (P Harris). SZ07/0277 Durlston Country Park (SZ0277); 17 Oct (N Sherman). SZ07/0278 Townsend Reserve (SZ0278); 12 Sep; 3 on 13 Sep; 2 on 18 Sep (T Vorsterman). SZ07/0377 Durlston Country Park (SZ0377); 15 on 09 Oct; 4 on 08 Oct (M J Hammond). SZ07/MT 0002 Swanage (SZ0278); 18 Sep; 21 Sep; 27 Sep; 6 on 03 Oct; 04 Oct; 11 Oct (P England). SZ08/0280 Durlston Country Park (SZ0280); 3 on 05 Oct (D C G Brown). Wide Horizon Townsend Centre (SZ0278); 22 Sep, leg. D Houghton (A L Robjohns).
- 73.234 *Dasypolia templi* (Thunberg, 1792) **BRINDLED OCHRE** Local
Recorded in: SY68; SY88; SZ07. SY68/6982 Preston, Ringstead Crescent (SY6982); 14 Oct ('Ricky' Lambert). SY88/MT 0001 East Lulworth (SY8583); 20 Oct, leg. Z Randle (Z Randle, L J Hill, R Jones). SZ07/0277 Durlston

- Country Park (SZ0277); 17 Oct (N Sherman). SZ07/0377 Durlston Country Park (SZ0377); 3 on 03 Nov, leg. S Nash (S Nash, M Botham).
- 73.237 *Polymixis flavicincta* ([Denis & Schiffermüller], 1775) **LARGE RANUNCULUS** Local
Recorded in: ST60; SY39; SY49; SY58; SY67; SZ07. ST60/6108 Leigh, Wesley House (ST6108); 17 Sep; 22 Sep; 26 Sep; 29 Sep; 2 on 03 Oct; 06 Oct (G A Nash). SY39/MT 0001 Charmouth (SY3693); 2 on 20 Sep (G Sell). SY49/MT 0002 Bothenhampton (SY4892); 13 Sep (M S Parsons). SY58/5388 Puncknowle (SY5388); 2 on 19 Sep; 13 Oct (M Hetherington). SY67/6870 Isle of Portland (SY6870); 01 Sep; 12 Oct; 19 Oct (D Saunders). SY67/MT 0005 Portland (SY6871); 03 Oct (J Williamson). SZ07/0277 Durlston Country Park (SZ0277); 17 Oct (N Sherman).
- 73.248 *Orthosia opima* (Hübner, [1809]) **NORTHERN DRAB** Local
Recorded in: ST60; ST91; SU00; SY68. Oxleaze Copse Chalbury (SU0107); 15 Apr (D J Evans). Sovell Down Gussage St Michael (ST9810); 15 Apr (D J Evans). ST60/6108 Leigh, Wesley House (ST6108); 16 Apr; 22 Apr (G A Nash). SY68/6085 Portesham (SY6085); 2 on 16 Apr (J Oughton).
- 73.254 *Cerapteryx graminis* (Linnaeus, 1758) **ANTLER MOTH**
Recorded in: SY39; SY98; SZ09. Lyme Regis (SY3392); 11 Aug (M A Ridge). Slepe Moor NT, (SY9485); 13 Aug (A Millar). St Leonards (SZ0594); 7 on 15 Jun (S Dutton). SY98/9288 Church Knowle (SY9288); 13 Jul; 20 Aug (R W Adams). SY98/9485 Slepe Heath (SY9485); 13 Aug (A Millar).
- 73.255 *Anarta trifolii* (Hufnagel, 1766) **NUTMEG**
Recorded in: SY58; SY66; SY67; SY68; SY78; SY79; SY99; SZ07; SZ09; SZ19. Broadmayne, Spring Gardens (SY7387); 20 Jul; 02 Aug (P Bruce-Jones). Mandeville Close, Weymouth (SY6577); 19 Jun (I Middlebrook). SY58/5387 West Bexington (SY5387); 2 on 24 Apr; 25 Apr (D Foot). SY66/6768 Isle of Portland (SY6768); 20 Jun (C Lewis). SY67/6870 Isle of Portland (SY6870); 09 Aug; 13 Aug (D Saunders). SY68/6085 Portesham (SY6085); 17 Aug (J Oughton). SY99/9794 Corfe Mullen (SY9794); 12 Aug, leg. A Fale (J Bedford). SZ07/0377 Durlston Country Park (SZ0377); 01 Jul (S Nash). Upwey (SY6684); 04 Jul; 22 Jul; 09 Sep (P T Kelly).
- 73.265 *Lacanobia contigua* ([Denis & Schiffermüller], 1775) **BEAUTIFUL BROCADE** Local
Recorded in: SU00; SY39; SY89; SZ09. Lyme Regis (SY3392); 25 Jun (M A Ridge). Merley, Sopwith Crescent (SZ0298); 18 Jul (R W Steedman). Oak Hill, Wareham Forest (SY8893); 2 on 15 Jul, leg. M S Parsons (M S Parsons, Z Randle). SU00/0609 Hedgerow (SU0609); 12 Jul (M Lowe). SY89/04 Morden Bog & Hyde Heath (SY8890); 18 Jul, leg. C M Manley (C M Manley, M S Parsons). SZ09/MT 0012 Poole (SZ0095); 05 Jul; 06 Jul (A H Bicker).
- 73.266 *Lacanobia suasa* ([Denis & Schiffermüller], 1775) **DOG'S TOOTH** Local
Recorded in: SY68; SY99; SZ08. Lytchett Bay, Lytchett Way (SY9792); 24 May (N J Hull). SY68/MT 0006 Weymouth (SY6682); 08 Jul (P Harris). SZ08/0287 Brownsea Island (SZ0287); 11 Jun (C Thain).
- 73.268 *Lacanobia splendens* (Hübner, [1808]) **SPLENDID BROCADE** Migrant
Recorded in: SY59; SY67. SY59/5599 Kingcombe Meadows (SY5599); 04 Jul (D C G Brown). SY67/xxxx Chickerell (SY67); 19 Jul (M Cade).
- 73.286 *Hadena perplexa* ([Denis & Schiffermüller], 1775) **TAWNY SHEARS**
Recorded in: SY58; SY59; SY66; SY67; SY68; SY69; SY78; SY79; SY98. Mandeville Close, Weymouth (SY6577); 27 May (I Middlebrook). SY58/5388 Puncknowle (SY5388); 04 Jun (M Hetherington). SY58/5784 Abbotsbury (SY5784); 04 Jul, leg. J Oughton (J Oughton, M Hetherington). SY59/5691 North Barn Farm (SY5691); 19 Jun (R Creighton). SY66/6768 Isle of Portland (SY6768); 2 on 19 Jun; 2 on 22 Jun; 23 Jun; 24 Jun; 25 Jun (C Lewis). SY67/6676 Weymouth (SY6676); 2 on 23 Jun; 25 Jun; 2 on 28 Jun; 19 Jul (D Foot). SY67/6870 Isle of Portland (SY6870); 09 Jul (D Saunders). SY68/6085 Portesham (SY6085); 29 Jul; 21 Aug (J Oughton). SY68/MT 0001 Dorchester (SY6889); 11 May (J E Down). SY68/MT 0002 Chickerell (SY6580); 07 May; 05 Jun (C Pinder). SY69/MT 0001 Frampton (SY6294); 28 Jun (H C R Wheatcroft). SY78/MT 0008 West Stafford (SY7289); 05 Sep, leg. E S Rose (E S Rose, A Rose). SY79/MT 0002 Tolpuddle (SY7994); 25 Jun (J Francis). SY98/9681 Corfe Common, comp L (SY9681); 19 Jul (C M Manley).
- 73.288 *Mythimna turca* (Linnaeus, 1761) **DOUBLE LINE** Nb
Recorded in: ST60; SY59. ST60/6108 Leigh, Wesley House (ST6108); 03 Jul (G A Nash). SY59/5599 Kingcombe Meadows (SY5599); 04 Jul (D C G Brown).
- 73.290 *Mythimna conigera* ([Denis & Schiffermüller], 1775) **BROWN-LINE BRIGHT-EYE**
Recorded in: ST81; SY67; SY68; SY78; SY88; SZ09. Merley, Sopwith Crescent (SZ0298); 11 May; 3 on 24 Jun; 09 Sep (R W Steedman). ST81/8412 Hambledon Hill (ST8412); 15 Jul (J A Newbould). SY67/6870 Isle of Portland (SY6870); 03 Jul; 06 Jul; 08 Jul; 4 on 09 Jul; 2 on 10 Jul; 12 Jul; 4 on 15 Jul; 7 on 18 Jul; 19 Jul; 4 on 23 Jul; 8 on 29 Jul; 13 on 30 Jul; 22 on 31 Jul; 4 on 02 Aug; 2 on 03 Aug; 5 on 06 Aug; 15 on 08 Aug; 6 on 11 Aug; 2 on 12 Aug; 2 on

- 13 Aug; 16 Aug; 7 on 16 Aug; 7 on 17 Aug; 2 on 21 Aug (D Saunders). SY67/6972 Portland, Grove (SY6972); 10 Jul; 3 on 04 Aug; 05 Aug; 2 on 12 Aug (S Foote). SY67/MT 0005 Portland (SY6871); 2 on 09 Jul; 15 Jul; 3 on 07 Aug; 2 on 11 Aug; 2 on 21 Aug (J Williamson). SY78/7083 Weymouth (SY7083); 2 on 14 Jun; 2 on 09 Jul (J A Newbould). SY88/MT 0001 East Lulworth (SY8583); 17 Jun (Z Randle). Upwey (SY6684); 2 on 15 Jul (P T Kelly).
- 73.299 *Mythimna litoralis* (Curtis, 1827) **SHORE WAINSCOT** Nb
Recorded in: SZ08. SZ08/0386 Roadside to South Haven Flats, Studland Heath (SZ0386); 22 Jun, leg. J Seawright (J Seawright, V Giavarini, J C Winterbottom). SZ08/0386 South Haven Point (SZ0386); 16 Jul; 2 on 29 Jun, leg. J C Winterbottom (J Seawright).
- 73.304 *Leucania loreyi* (Duponchel, 1827) **COSMOPOLITAN** Migrant
Recorded in: ST80; SY66; SY68; SY78; SY79. ST80/8304 Winterborne Stickland (ST8304); 02 Nov (W W Bown). Sutton Poyntz (SY7083); 09 Oct (C Marsh). SY66/MT 0001 Portland (SY6868); 01 Nov (M Cade). SY68/MT 0006 Weymouth (SY6682); 18 Sep (P Harris).
- 73.314 *Euxoa nigricans* (Linnaeus, 1761) **GARDEN DART**
Recorded in: SY67; SY78. SY67/6870 Isle of Portland (SY6870); 15 Jul; 23 Jul; 29 Jul (D Saunders). SY78/7083 Weymouth (SY7083); 2 on 15 Aug (J Campbell). SY78/MT 0008 West Stafford (SY7289); 26 Sep, leg. E S Rose (E S Rose, A Rose).
- 73.316 *Agrotis cinerea* ([Denis & Schiffermüller], 1775) **LIGHT FEATHERED RUSTIC** Nb
Recorded in: SZ07. SZ07/MT 0002 Swanage (SZ0278); 10 Jun (P England).
- 73.321 *Agrotis herzogi* Rebel, 1911 **SPALDING'S DART** Vagrant/Accidental
Recorded in: SZ09. Poole, Willis Way (SZ0092); indoors, 17 Dec, leg. L J Hill **New VC Record**. (L Austrin).
- 73.322 *Agrotis vestigialis* (Hufnagel, 1766) **ARCHER'S DART** Local
Recorded in: ST60; SY98; SY99; SZ08; SZ09. ST60/6805 Buckland Newton (ST6805); 24 Jun, leg. D Penton (D Penton, M Penton). SY98/9787 Arne (SY9787); 10 Aug, leg. L Phillips; 2 on 14 Aug, leg. L Phillips; 18 Aug, leg. L Phillips; 2 on 27 Aug, leg. L Phillips; 2 on 28 Aug, leg. L Phillips; 2 on 29 Aug, leg. L Phillips (L Phillips, G Hinton, J Stockwell). SY99/9794 Beacon Hill (SY9794); 10 Sep, leg. R W Steedman (R W Steedman, J Bedford). SZ08/02 Studland and Godlingston Heaths (SZ0383); 13 Aug; 2 on 07 Sep, leg. J Seawright (A Millar). SZ08/0383 Studland (SZ0383); 13 Aug; 18 Aug (A Millar). SZ08/0386 Roadside to South Haven Flats, Studland Heath (SZ0386); 31 Aug, leg. J Seawright; 07 Sep, leg. J Seawright (J Seawright, V Giavarini).
- 73.323 *Agrotis ripae* (Hübner, [1823]) **SAND DART** Nb
Recorded in: SZ08. SZ08/0288 Brownsea Island (SZ0288); 12 Jun (C Thain). SZ08/0386 South Haven Point (SZ0386); 16 Jul; 13 Jul (J Seawright).
- 73.324 *Agrotis trux* (Hübner, [1824]) **CRESCENT DART** Local
Recorded in: SY58; SY67; SZ07. SY58/5388 Puncknowle (SY5388); 16 Jul (M Hetherington). SY67/6870 Isle of Portland (SY6870); 15 Jul (D Saunders). SY67/6972 Portland, Grove (SY6972); 18 Aug (S Foote). SZ07/0377 Durlston Country Park (SZ0377); 2 on 11 Jun; 01 Jul; 06 Jul; 08 Oct (S Nash).
- 73.341 *Standfussiana lucerneae* (Linnaeus, 1758) **NORTHERN RUSTIC** Local
Recorded in: SY66. SY66/6768 Isle of Portland (SY6768); 20 Jun; 2 on 21 Jun (C Lewis).
- 73.347 *Noctua janthina* [Denis & Schiffermüller], 1775 **LANGMAID'S YELLOW UNDERWING** Migrant
Recorded in: SY67. Portland, Broadcroft Quarry (SY6972); 27 Jun (N Spring).

Recorders

Records were gratefully received from the following 405 recorders: A Barlow; A Buck; A Carter; A Cooper; A Corton; A Dobbs; A F Mylward; A Foster; A H Bicker; A Heathershaw; A Higgins; A Hopkins; A House; A Jardine-Skears; A Kirby; A L Robjohns; A Long; A M Davis; A May; A Millar; A Musgrove; A Philpott; A Reese; A Rose; A Rosenthal; A Salmon; A Smith; A Stewart; A Tinline; A Willis; B Aucott; B D D Young; B Droop; B Franklin; B Greene; B Harvell; B Holmes; B J Lagden; B Le Bas; B P Pickess; B W G Hall; B Woods; C Alborough; C Argles; C Blake; C Bolton; C Bowden; C Bowman-Hill; C Bown; C bullock; C Chesters; C Collins; C Conway; C Copp; C Dawkins; C

Dennett; C F Blyth; C Haley; C Hollingum; C Iles; C K House; C Kelly; C Lee; C Lewis; C Lord; C M Manley; C Marsh; C Miller; C Moyes; C Piggin; C Pinder; C R Burningham; C Randall; C Richardson; C Roper; C Steele; C Thackwray; C Thain; C Upton; C Vincent; C Walker; C Westbrook; C Willmoth; Cyril Diver Volunteers; D Arnold; D Broadway; D C G Brown; D Coleman; D Cook; D D'Arcy; D Dawson; D E Brown; D Foot; D Fowler; D Grundy; D Hall; D Helliari; D Higginson-Tranter; D Hoare; D Hughes; D J Evans; D Jones; D Lonsdale; D Miller; D Mitchell; D Penton; D Raper; D Saunders; D Taylor; D Wheeler; E Booton; E Dennis; E Doble; E Haines; E Hitchings; E Hutchings; E MacDouall; E Manser; E S Rose; E Watkinson; EJ Hothersall; F Lewis; F Moore; G A Laing; G A Nash; G Birch; G Brooke; G Crawley; G Droop; G Geen; G Hedges; G Hinton; G Horn; G Laing; G Mills; G Price; G Sell; G Stewardson; G West; G Witton-Maclean; H Burnett; H C R Wheatcroft; H G Wood Homer; H Richings; H Willmott; I Gamble; I Laing; I Middlebrook; I Moy; I Watson; J A Newbould; J Adams; J Baker; J Battersby; J Bedford; J C Winterbottom; J Campbell; J Castle; J Clark; J Clarke; J Copps; J Craig; J D McMillan; J Davis; J Driscoll; J E Down; J Evans; J Ford; J Francis; J Furlong; J Gale; J Gifford; J Gilbert; J Goh; J Hector; J Holdaway; J Kelley; J Lamming; J Lloyd; J M Elliott; J Mannerings; J Morton; J Nattress; J Noyes; J Oughton; J Petran; J R Applin; J R S Browne; J R Sokolnicki; J Rogers; J Seawright; J Smith; J Stevens; J Stockwell; J Stokes; J Symonds; J T Martin; J Thacker; J Thompson; J van Breda; J W Wescombe; J Waldron; J Walker; J Warner; J Watson; J Westgate; J White; J Wilkerson; J Wilkinson; J Williamson; K Bergg; K Davies; K L Rickard; K McGillicuddy; K Morgan; K Wiles; L Austrin; L Bryson Potter; L Bygrave; L Clacher; L Davy; L de Whalley; L Fischell; L Franklin; L Hooper; L J Hill; L Jackson; L Lambert; L Mackinnon; L McLellan; L Meaker; L Nash; L Northcott; L Phillips; L Popely; L Pullen; L Richardson; L Smith; L Tuthill; M A Ridge; M Bellingham; M Botham; M Bray; M Cade; M Cockerill; M Cribbs; M Dearlove; M Dowty; M Flowers; M Fowlie; M Fussell; M Granlund; M Helen; M Hetherington; M Howell; M Imrie; M J Hammond; M James; M Jeffes; M Jones; M King; M Lowe; M Oldfield; M Oliver; M Penton; M Phipps; M Podschies; M Raper; M Robinson; M S Parsons; M S Warren; M Tasker; M Titchmarsh; M Vincent; M Wemyss; M Whyte; M Williams; N Barker; N Bicker; N Howell; N J Howell; N J Hull; N Monks; N Ngo; N Payne; N Pinder; N Salaman; N Sammons; N Sherman; N Smithson; N Spring; N Urch; N Voaden; N Woods; O Frampton; P A Pires; P Baker; P Borrow; P Bruce-Jones; P Cooper; P Davis; P England; P Harman; P Harper; P Harris; P Hawes; P Heath; P Jefferies; P Leyland; P Metcalfe; P Smith; P T Kelly; P Walsh; R Baylis; R Beech; R Blundred; R Brierly; R Chace; R Coleman; R Conduit; R Creighton; R Ford; R George; R Gibbs; R Gillingham; R Grimmond; R Hiley; R Jones; R Knight; R Laughton; R M Porter; R P Harley; R Perkins; R Porter; R Robinson; R Rogers; R Stewart; R Terry; R Tooley; R W Adams; R W Fox; R W Steedman; R Walls; R Young; 'Ricky' Lambert; S Abbott; S Anders; S Beare; S Brown; S Buckle; S Carey; S Corkhill; S Curson; S Dutton; S Ellis; S Faulkner; S Foote; S Ford; S Francis; S Hales; S Harris; S Hewitt; S Jones; S Lambert; S Martin; S Meakin; S Nash; S Phelps; S Philp; S Roberts; S Smith; S Stokes; S Stonebridge; S Thompson; S Walkinshaw; S Warren; S Westerberg; S Whitehouse; S Wright; S Wyllys; T Bone; T Brereton; T Collyer; T D Kaye; T Dunne; T Dunstone; T Field; T Girling; T Kerley; T Lee; T Letch; T Oliver; T Poole Dodsworth; T Smith; T Vorsterman; T Watson; T Wiffen; T Wilson; Urban Weekenders; V Giavarini; W G Shreeves; W T Franklin; W W Bown; Z A McMinn & Z Randle.

My apologies if anyone has been omitted from this list.

References

Agassiz, D.J.L., Beavan, S.D. & Heckford, R.J. 2013. *A checklist of the Lepidoptera of the British Isles*. Field Studies Council.