

DORSET MACRO-MOTHS 2016

COUNTY MACRO-MOTH RECORDER'S REPORT

LESLIE J. EVANS-HILL FRES

Butterfly Conservation, Manor Yard, East Lulworth, Dorset BH20 5QP

E-mail: levans-hill@butterfly-conservation.org

Abstract

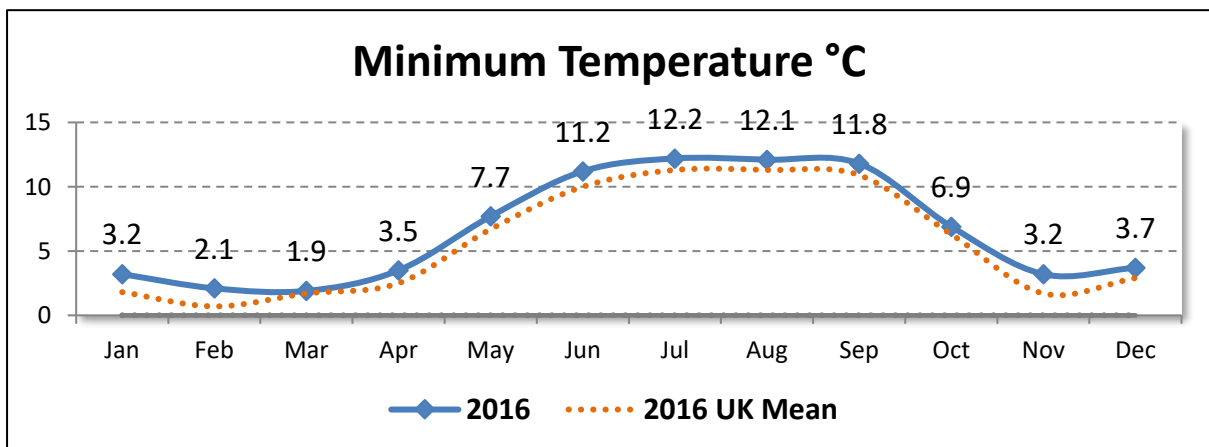
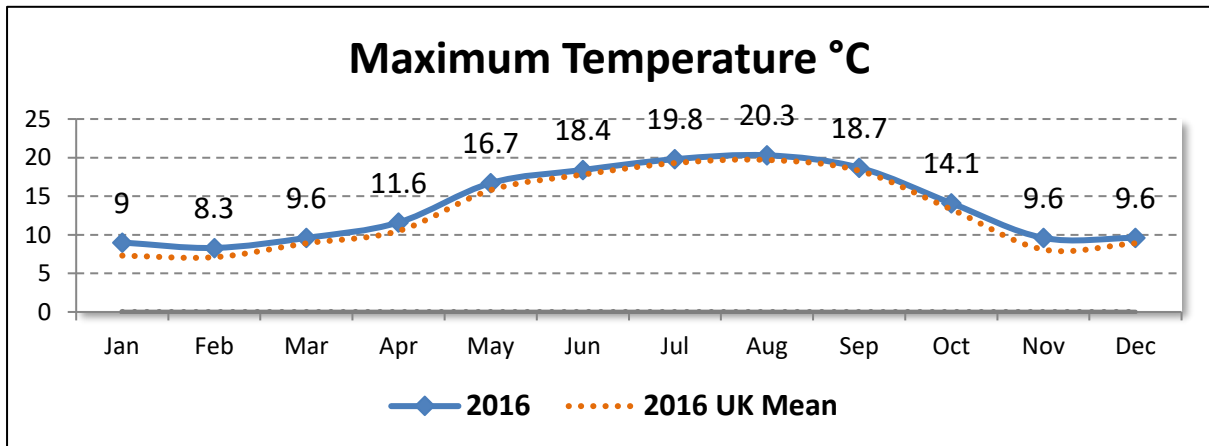
Presented here are data pertaining to submitted records of local macro-moth records of interest during the year 2016 in Dorset administrative and vice-county (9). Errors & omissions expected.

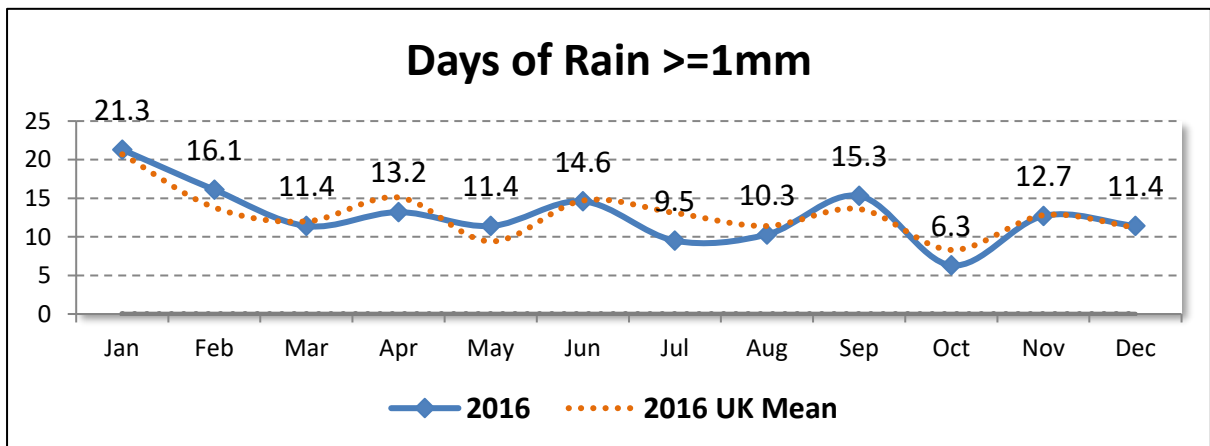
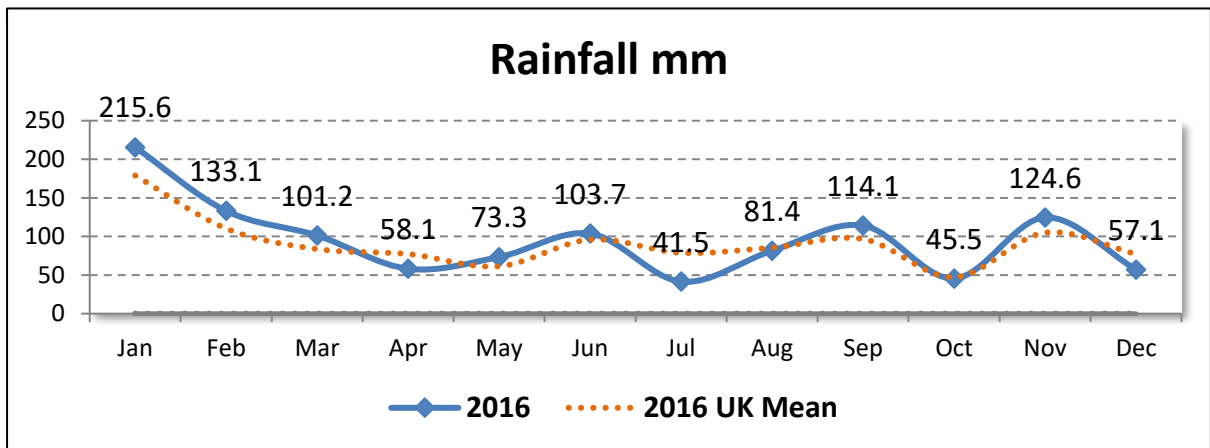
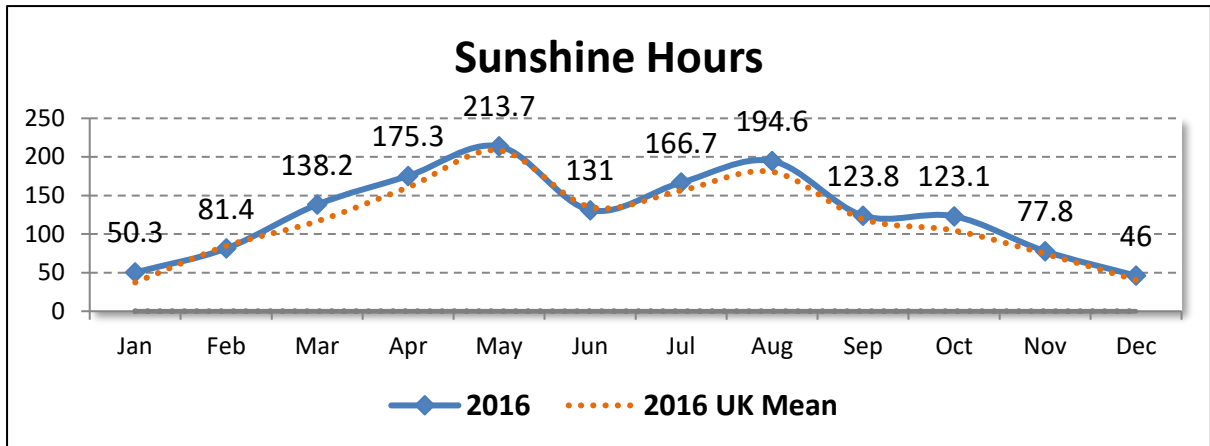
Records and Species per Year

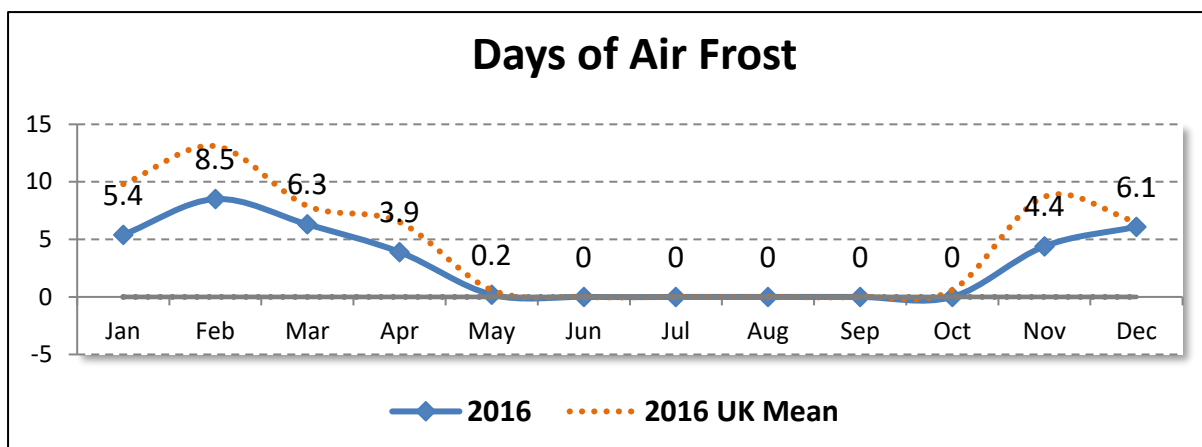
<i>Year</i>	<i>Records</i>	<i>Species</i>
2016	38,261	531

Weather

All data are © Crown Copyright. UK Met Office.







New to Dorset

One species is confirmed new to Dorset during 2016:

- *Conistra rubiginosa* (Scopoli, 1763) **BLACK-SPOTTED CHESTNUT** from Portland (SY6868); 1 Adult on 05 Jan 2016 by M Cade.

Species per 10km

All life stages – Unverified records and records where there is doubt are excluded.

<i>10km</i>	<i>Species</i>	<i>10km</i>	<i>Species</i>	<i>10km</i>	<i>Species</i>
ST20	1	ST91	19	SY77	1
ST30	103	SU00	201	SY78	282
ST40	217	SU01	11	SY79	377
ST50	3	SU02	0	SY87	3
ST51	23	SU10	81	SY88	248
ST60	236	SU11	1	SY89	247
ST61	241	SY39	275	SY97	94
ST70	160	SY48	4	SY98	260
ST71	90	SY49	305	SY99	247
ST72	1	SY58	207	SZ07	211
ST73	0	SY59	154	SZ08	256
ST80	162	SY66	241	SZ09	250
ST81	17	SY67	260		
ST82	2	SY68	329		
ST90	124	SY69	119		

2016 Summary

All figures are for adults. Records with vague dates are excluded; however, unverified records are included. For species that overwinter as adults or emerge the year prior, the earliest and latest dates are unavailable.

<i>Code</i>	<i>Taxon</i>	<i>Vernacular</i>	<i>Records</i>	<i>Individuals</i>	<i>Earliest</i>	<i>Latest</i>
	<i>Acronicta tridens/psi</i>	DARK DAGGER / GREY DAGGER	89	98	08 May	05 Sep
	<i>Amphipoea oculea</i> agg.	EAR MOTH AGG.	43	54	16 Jul	13 Sep
	<i>Amphipyra pyramidea</i> agg.	COPPER UNDERWING AGG.	43	53	07 Aug	24 Oct
	<i>Epirrita dilutata</i> agg.	NOVEMBER MOTH AGG.	54	173	14 Oct	07 Dec
	<i>Euxoa tritici/obelisca</i>	WHITE-LINE DART/SQUARE-SPOT DART	5	6	21 Jul	04 Sep
	<i>Hoplodrina octogenaria/blanda</i>	UNCERTAIN/RUSTIC AGG.	432	1874	03 Jun	24 Sep
	<i>Mesapamea secalis</i> agg.	COMMON RUSTIC AGG.	430	1954	05 Jun	21 Sep
	<i>Oligia strigilis</i> agg.	MARbled MINOR AGG.	326	949	06 May	31 Aug
3.001	<i>Triodia sylvina</i>	ORANGE SWIFT	102	158	05 Aug	21 Sep
3.002	<i>Korscheltellus lupulina</i>	COMMON SWIFT	137	549	07 May	28 Jul
3.004	<i>Phymatopus hecta</i>	GOLD SWIFT	3	17	22 Jun	25 Jul
3.005	<i>Hepialus humuli</i>	GHOST MOTH	34	43	26 May	22 Aug
50.001	<i>Cossus cossus</i>	GOAT MOTH	1	1	18 Jul	18 Jul
50.002	<i>Zeuzera pyrina</i>	LEOPARD MOTH	12	12	16 Jun	06 Aug
52.010	<i>Synanthedon andrenaeformis</i>	ORANGE-TAILED CLEARWING	1	1	16 Jul	16 Jul
52.014	<i>Bembecia ichneumoniformis</i>	SIX-BELTED CLEARWING	1	1	10 Jul	10 Jul
53.001	<i>Apoda limacodes</i>	FESTOON	11	24	06 Jun	26 Jul
54.002	<i>Adscita statices</i>	FORESTER	13	27	05 Jun	14 Jul
54.003	<i>Adscita geryon</i>	CISTUS FORESTER	15	214	27 May	27 Jun
54.008	<i>Zygaena filipendulae</i>	SIX-SPOT BURNET	237	1185	29 May	16 Aug
54.009	<i>Zygaena lonicerae</i>	NARROW-BORDERED FIVE-SPOT BURNET	15	46	04 Jun	14 Jul
54.010	<i>Zygaena trifolii</i>	FIVE-SPOT BURNET	13	33	22 Jun	06 Aug
65.001	<i>Falcaria lacertinaria</i>	SCALLOPED HOOK-TIP	45	56	08 May	25 Aug
65.002	<i>Watsonalla binaria</i>	OAK HOOK-TIP	39	51	08 May	22 Sep
65.005	<i>Drepana falcataria</i>	PEBBLE HOOK-TIP	79	99	06 May	31 Aug

<i>Code</i>	<i>Taxon</i>	<i>Vernacular</i>	<i>Records</i>	<i>Individuals</i>	<i>Earliest</i>	<i>Latest</i>
65.007	<i>Cilix glaucata</i>	CHINESE CHARACTER	165	213	06 May	13 Sep
65.008	<i>Thyatira batis</i>	PEACH BLOSSOM	46	59	29 May	07 Sep
65.009	<i>Habrosyne pyritoides</i>	BUFF ARCHES	160	257	30 May	12 Aug
65.010	<i>Tethea ocularis</i>	FIGURE OF EIGHTY	22	23	30 May	18 Jul
65.013	<i>Ochropacha duplaris</i>	COMMON LUTESTRING	11	15	08 Jun	29 Jul
65.015	<i>Polyploca ridens</i>	FROSTED GREEN	2	3	05 May	06 May
65.016	<i>Achlya flavicornis</i>	YELLOW HORNED	9	19	10 Mar	03 Apr
66.001	<i>Poecilocampa populi</i>	DECEMBER MOTH	60	408	Unavailable	Unavailable
66.002	<i>Trichiura crataegi</i>	PALE EGGAR	16	27	18 Aug	21 Sep
66.003	<i>Malacosoma neustria</i>	LACKEY	137	631	01 Jun	28 Aug
66.005	<i>Eriogaster lanestris</i>	SMALL EGGAR	5	6	05 Apr	16 Apr
66.007	<i>Lasiocampa quercus</i>	OAK EGGAR	44	53	20 Jul	30 Aug
66.008	<i>Macrothylacia rubi</i>	FOX MOTH	10	12	28 May	10 Jun
66.010	<i>Euthrix potatoria</i>	DRINKER	128	205	02 Jun	17 Aug
66.012	<i>Gastropacha quercifolia</i>	LAPPET	1	1	16 Jul	16 Jul
68.001	<i>Saturnia pavonia</i>	EMPEROR MOTH	2	2	23 Apr	10 May
69.001	<i>Mimas tiliae</i>	LIME HAWK-MOTH	18	19	10 May	02 Jul
69.002	<i>Smerinthus ocellata</i>	EYED HAWK-MOTH	81	90	10 May	08 Aug
69.003	<i>Laothoe populi</i>	POPLAR HAWK-MOTH	250	334	07 May	11 Sep
69.004	<i>Agrius convolvuli</i>	CONVOLVULUS HAWK-MOTH	39	47	11 Jun	05 Oct
69.005	<i>Acherontia atropos</i>	DEATH'S-HEAD HAWK-MOTH	1	1	10 Sep	10 Sep
69.006	<i>Sphinx ligustri</i>	PRIVET HAWK-MOTH	127	157	12 May	07 Aug
69.007	<i>Sphinx pinastri</i>	PINE HAWK-MOTH	25	26	10 May	27 Aug
69.008	<i>Hemaris tityus</i>	NARROW-BORDERED BEE HAWK-MOTH	1	4	12 May	12 May
69.009	<i>Hemaris fuciformis</i>	BROAD-BORDERED BEE HAWK-MOTH	3	3	29 May	07 Jun
69.010	<i>Macroglossum stellatarum</i>	HUMMING-BIRD HAWK-MOTH	152	170	12 Mar	02 Nov
69.014	<i>Hyles gallii</i>	BEDSTRAW HAWK-MOTH	1	1	29 Aug	29 Aug
69.015	<i>Hyles livornica</i>	STRIPED HAWK-MOTH	1	1	12 Jun	12 Jun

<i>Code</i>	<i>Taxon</i>	<i>Vernacular</i>	<i>Records</i>	<i>Individuals</i>	<i>Earliest</i>	<i>Latest</i>
69.016	<i>Deilephila elpenor</i>	ELEPHANT HAWK-MOTH	283	562	23 May	06 Sep
69.017	<i>Deilephila porcellus</i>	SMALL ELEPHANT HAWK-MOTH	51	60	26 May	08 Aug
70.004	<i>Idaea rusticata</i>	LEAST CARPET	12	15	19 Jul	27 Jul
70.006	<i>Idaea fuscovenosa</i>	DWARF CREAM WAVE	30	41	26 Jun	30 Jul
70.008	<i>Idaea seriata</i>	SMALL DUSTY WAVE	42	43	04 Jun	15 Sep
70.009	<i>Idaea subsericeata</i>	SATIN WAVE	21	27	28 May	02 Sep
70.010	<i>Idaea sylvestriaria</i>	DOTTED BORDER WAVE	5	15	14 Jul	30 Jul
70.011	<i>Idaea dimidiata</i>	SINGLE-DOTTED WAVE	216	343	22 Jun	20 Sep
70.012	<i>Idaea trigeminata</i>	TREBLE BROWN SPOT	62	100	29 May	16 Jul
70.013	<i>Idaea biselata</i>	SMALL FAN-FOOTED WAVE	207	558	20 Jun	31 Aug
70.015	<i>Idaea emarginata</i>	SMALL SCALLOP	1	1	07 Aug	07 Aug
70.016	<i>Idaea aversata</i>	RIBAND WAVE	439	1498	25 May	20 Sep
70.017	<i>Idaea degeneraria</i>	PORTLAND RIBBON WAVE	7	10	24 Jun	17 Sep
70.018	<i>Idaea straminata</i>	PLAIN WAVE	12	26	08 Jun	25 Aug
70.023	<i>Scopula marginepunctata</i>	MULLEIN WAVE	45	61	28 May	12 Sep
70.024	<i>Scopula imitaria</i>	SMALL BLOOD-VEIN	91	113	02 Jun	16 Sep
70.025	<i>Scopula immutata</i>	LESSER CREAM WAVE	3	3	11 Jul	26 Jul
70.027	<i>Scopula floslactata</i>	CREAM WAVE	8	8	24 May	21 Jun
70.029	<i>Timandra comae</i>	BLOOD-VEIN	198	346	04 Jun	21 Sep
70.030	<i>Cyclophora pendularia</i>	DINGY MOCHA	7	8	14 Jul	24 Aug
70.031	<i>Cyclophora annularia</i>	MOCHA	30	44	27 May	07 Sep
70.032	<i>Cyclophora albipunctata</i>	BIRCH MOCHA	10	10	26 Jul	10 Sep
70.033	<i>Cyclophora pupillaria</i>	BLAIR'S MOCHA	12	14	24 Aug	30 Oct
70.034	<i>Cyclophora ruficiliaria</i>	JERSEY MOCHA	2	2	25 Aug	11 Sep
70.036	<i>Cyclophora punctaria</i>	MAIDEN'S BLUSH	117	196	06 May	13 Sep
70.037	<i>Cyclophora linearia</i>	CLAY TRIPLE-LINES	10	11	04 Jun	07 Sep
70.038	<i>Rhodometra sacraria</i>	VESTAL	91	131	15 Jun	30 Oct
70.041	<i>Scotopteryx luridata</i>	JULY BELLE	6	9	13 Jun	25 Jul

<i>Code</i>	<i>Taxon</i>	<i>Vernacular</i>	<i>Records</i>	<i>Individuals</i>	<i>Earliest</i>	<i>Latest</i>
70.043	<i>Scotopteryx bipunctaria</i>	CHALK CARPET	13	19	11 Jul	05 Sep
70.045	<i>Scotopteryx chenopodiata</i>	SHADED BROAD-BAR	35	124	22 Jun	06 Sep
70.046	<i>Orthonama vittata</i>	OBLIQUE CARPET	2	3	04 Jun	12 Sep
70.047	<i>Nycterosea obstipata</i>	GEM	36	38	08 May	14 Dec
70.049	<i>Xanthorhoe fluctuata</i>	GARDEN CARPET	212	288	21 Apr	14 Nov
70.051	<i>Xanthorhoe spadicearia</i>	RED TWIN-SPOT CARPET	113	132	05 May	28 Aug
70.052	<i>Xanthorhoe ferrugata</i>	DARK-BARRED TWIN-SPOT CARPET	2	2	27 May	23 Aug
70.053	<i>Xanthorhoe designata</i>	FLAME CARPET	49	57	27 May	06 Sep
70.054	<i>Xanthorhoe montanata</i>	SILVER-GROUND CARPET	109	150	09 May	14 Aug
70.057	<i>Catarhoe rubidata</i>	RUDDY CARPET	3	3	17 Jul	19 Jul
70.059	<i>Camptogramma bilineata</i>	YELLOW SHELL	80	115	02 Jun	20 Sep
70.061	<i>Epirrhoe alternata</i>	COMMON CARPET	297	497	20 Apr	23 Sep
70.062	<i>Epirrhoe rivata</i>	WOOD CARPET	3	3	10 Jun	07 Sep
70.063	<i>Epirrhoe galiata</i>	GALIUM CARPET	20	28	28 May	22 Sep
70.064	<i>Euphyia biangulata</i>	CLOAKED CARPET	6	6	13 Jun	15 Aug
70.065	<i>Euphyia unangulata</i>	SHARP-ANGLED CARPET	9	10	10 Jun	26 Aug
70.066	<i>Earophila badiata</i>	SHOULDER STRIPE	9	9	08 Apr	10 May
70.067	<i>Anticlea derivata</i>	STREAMER	42	46	02 Apr	14 May
70.068	<i>Mesoleuca albicillata</i>	BEAUTIFUL CARPET	4	4	19 Jul	14 Aug
70.069	<i>Pelurga comitata</i>	DARK SPINACH	1	1	19 Jul	19 Jul
70.070	<i>Larentia clavaria</i>	MALLOW	4	4	04 Oct	25 Oct
70.074	<i>Hydriomena furcata</i>	JULY HIGHFLYER	85	120	09 Jun	24 Aug
70.075	<i>Hydriomena impluviata</i>	MAY HIGHFLYER	13	14	07 May	15 Jul
70.076	<i>Hydriomena ruberata</i>	RUDDY HIGHFLYER	1	2	08 May	08 May
70.077	<i>Pennithera firmata</i>	PINE CARPET	59	92	10 Jun	03 Nov
70.079	<i>Thera britannica</i>	SPRUCE CARPET	55	63	10 Apr	07 Dec
70.080	<i>Thera vetustata</i>	FIR CARPET	1	1	19 Jul	19 Jul
70.081	<i>Thera obeliscata</i>	GREY PINE CARPET	121	201	07 May	14 Nov

<i>Code</i>	<i>Taxon</i>	<i>Vernacular</i>	<i>Records</i>	<i>Individuals</i>	<i>Earliest</i>	<i>Latest</i>
70.083	<i>Thera cupressata</i>	CYPRESS CARPET	62	71	26 May	15 Nov
70.084	<i>Plemyria rubiginata</i>	BLUE-BORDERED CARPET	49	64	04 Jun	30 Jul
70.085	<i>Cidaria fulvata</i>	BARRED YELLOW	25	26	13 Jun	26 Jul
70.086	<i>Electrophaes corylata</i>	BROKEN-BARRED CARPET	50	53	05 May	04 Jul
70.087	<i>Cosmorhoe ocellata</i>	PURPLE BAR	69	87	08 May	13 Sep
70.089	<i>Eulithis prunata</i>	PHOENIX	34	36	25 May	25 Aug
70.090	<i>Eulithis testata</i>	CHEVRON	7	8	18 Jul	29 Sep
70.092	<i>Eulithis mellinata</i>	SPINACH	2	3	16 Jul	17 Jul
70.093	<i>Gandaritis pyraliata</i>	BARRED STRAW	121	189	01 Jun	30 Jul
70.094	<i>Ecliptopera silaceata</i>	SMALL PHOENIX	46	76	10 May	05 Sep
70.095	<i>Chloroclysta siterata</i>	RED-GREEN CARPET	77	118	Unavailable	Unavailable
70.097	<i>Dysstroma truncata</i>	COMMON MARBLED CARPET	453	905	21 Jan	08 Dec
70.099	<i>Colostygia olivata</i>	BEECH-GREEN CARPET	1	1	27 Jul	27 Jul
70.100	<i>Colostygia pectinataria</i>	GREEN CARPET	201	767	12 Apr	04 Oct
70.101	<i>Colostygia multistrigaria</i>	MOTTLED GREY	2	2	25 Jan	18 Apr
70.103	<i>Lampropteryx suffumata</i>	WATER CARPET	3	4	04 Apr	18 Apr
70.104	<i>Lampropteryx otregiata</i>	DEVON CARPET	2	2	09 May	30 Jul
70.106	<i>Operophtera brumata</i>	WINTER MOTH	28	66	Unavailable	Unavailable
70.111	<i>Asthenes albulata</i>	SMALL WHITE WAVE	12	37	08 May	11 Aug
70.112	<i>Euchoeca nebulata</i>	DINGY SHELL	8	8	26 Jun	25 Aug
70.113	<i>Hydrelia sylvata</i>	WAVED CARPET	1	1	16 Jul	16 Jul
70.114	<i>Hydrelia flammeolaria</i>	SMALL YELLOW WAVE	33	36	13 Jun	24 Aug
70.117	<i>Minoa murinata</i>	DRAB LOOPER	3	3	24 May	26 May
70.118	<i>Philereme vetulata</i>	BROWN SCALLOP	1	1	20 Jul	20 Jul
70.119	<i>Philereme transversata</i>	DARK UMBER	2	3	20 Jul	20 Jul
70.121	<i>Rheumaptera undulata</i>	SCALLOP SHELL	18	21	29 May	05 Aug
70.124	<i>Pareulype berberata</i>	BARBERRY CARPET	1	1	23 Jul	23 Jul
70.126	<i>Horisme vitalbata</i>	SMALL WAVED UMBER	32	45	08 May	28 Aug

<i>Code</i>	<i>Taxon</i>	<i>Vernacular</i>	<i>Records</i>	<i>Individuals</i>	<i>Earliest</i>	<i>Latest</i>
70.127	<i>Horisme tersata</i>	FERN	15	20	22 Jun	17 Aug
70.128	<i>Melanthia procellata</i>	PRETTY CHALK CARPET	21	28	04 Jun	22 Sep
70.130	<i>Odezia atrata</i>	CHIMNEY SWEEPER	5	11	08 Jun	05 Jul
70.131	<i>Mesotype didymata</i>	TWIN-SPOT CARPET	1	1	28 Jul	28 Jul
70.132	<i>Perizoma affinitata</i>	RIVULET	23	25	26 May	18 Aug
70.133	<i>Perizoma alchemillata</i>	SMALL RIVULET	18	24	06 Jun	18 Aug
70.134	<i>Perizoma bifaciata</i>	BARRED RIVULET	1	1	21 Jul	21 Jul
70.137	<i>Perizoma albulata</i>	GRASS RIVULET	4	8	04 Jun	08 Jul
70.138	<i>Perizoma flavofasciata</i>	SANDY CARPET	32	36	28 May	30 Jul
70.141	<i>Gymnoscelis rufifasciata</i>	DOUBLE-STRIPED PUG	421	801	23 Jan	15 Dec
70.142	<i>Chloroclystis v-ata</i>	V-PUG	81	95	01 May	06 Sep
70.144	<i>Pasiphila rectangulata</i>	GREEN PUG	143	234	10 May	06 Aug
70.146	<i>Eupithecia haworthiata</i>	HAWORTH'S PUG	13	14	06 Jul	27 Aug
70.147	<i>Eupithecia tenuiata</i>	SLENDER PUG	16	18	07 Jun	31 Jul
70.148	<i>Eupithecia inturbata</i>	MAPLE PUG	15	19	08 Jul	20 Aug
70.150	<i>Eupithecia linariata</i>	TOADFLAX PUG	5	5	07 Jul	05 Sep
70.151	<i>Eupithecia pulchellata</i>	FOXGLOVE PUG	110	146	21 Apr	30 Jul
70.152	<i>Eupithecia ultimaria</i>	CHANNEL ISLANDS PUG	4	4	11 Jun	25 Aug
70.156	<i>Eupithecia abbreviata</i>	BRINDLED PUG	51	67	13 Mar	10 Jun
70.157	<i>Eupithecia dodoneata</i>	OAK-TREE PUG	30	61	14 Apr	10 Jun
70.159	<i>Eupithecia phoeniceata</i>	CYPRESS PUG	40	80	10 Jun	29 Oct
70.160	<i>Eupithecia tripunctaria</i>	WHITE-SPOTTED PUG	18	23	19 May	25 Aug
70.162	<i>Eupithecia tantillaria</i>	DWARF PUG	3	5	30 May	10 Jun
70.163	<i>Eupithecia lariciata</i>	LARCH PUG	1	1	30 Jul	30 Jul
70.166	<i>Eupithecia simpliciatata</i>	PLAIN PUG	9	9	09 Jun	05 Aug
70.168	<i>Eupithecia nanata</i>	NARROW-WINGED PUG	33	67	08 May	12 Sep
70.169	<i>Eupithecia innotata</i>	ANGLE-BARRED PUG	1	1	25 Aug	25 Aug
70.171	<i>Eupithecia indigata</i>	OCHREOUS PUG	5	5	27 May	23 Jun

<i>Code</i>	<i>Taxon</i>	<i>Vernacular</i>	<i>Records</i>	<i>Individuals</i>	<i>Earliest</i>	<i>Latest</i>
70.172	<i>Eupithecia distinctaria</i>	THYME PUG	1	1	22 Jun	22 Jun
70.173	<i>Eupithecia centaureata</i>	LIME-SPECK PUG	60	74	10 May	21 Sep
70.176	<i>Eupithecia intricata</i>	FREYER'S PUG	30	34	26 May	24 Jul
70.179	<i>Eupithecia absinthiata</i>	WORMWOOD PUG	31	34	06 May	07 Sep
70.181	<i>Eupithecia valerianata</i>	VALERIAN PUG	8	14	25 May	15 Jun
70.182	<i>Eupithecia assimilata</i>	CURRENT PUG	47	67	10 May	07 Sep
70.183	<i>Eupithecia vulgata</i>	COMMON PUG	207	304	02 May	25 Sep
70.184	<i>Eupithecia exigua</i>	MOTTLED PUG	49	71	19 May	29 Jul
70.187	<i>Eupithecia icterata</i>	TAWNY SPECKLED PUG	5	5	11 Aug	17 Sep
70.189	<i>Eupithecia subumbrata</i>	SHADED PUG	6	6	07 May	17 Jun
70.190	<i>Eupithecia subfuscata</i>	GREY PUG	29	31	26 May	26 Jul
70.192	<i>Aplocera plagiata</i>	TREBLE-BAR	11	14	18 May	13 Sep
70.195	<i>Chesias legatella</i>	STREAK	1	1	28 Oct	28 Oct
70.198	<i>Lobophora halterata</i>	SERAPHIM	4	8	28 May	07 Jun
70.199	<i>Pterapherapteryx sexalata</i>	SMALL SERAPHIM	30	34	25 May	04 Sep
70.200	<i>Acasis viretata</i>	YELLOW-BARRED BRINDLE	106	124	11 May	21 Sep
70.202	<i>Trichopteryx carpinata</i>	EARLY TOOTH-STRIPED	26	34	11 Apr	19 May
70.205	<i>Abraxas grossulariata</i>	MAGPIE MOTH	236	467	15 Jun	07 Sep
70.206	<i>Abraxas sylvata</i>	CLOUDED MAGPIE	3	3	16 Jul	27 Aug
70.207	<i>Lomaspilis marginata</i>	CLOUDED BORDER	238	449	12 May	28 Oct
70.208	<i>Ligdia adustata</i>	SCORCHED CARPET	48	69	10 May	22 Aug
70.211	<i>Macaria notata</i>	PEACOCK MOTH	1	1	28 Aug	28 Aug
70.212	<i>Macaria alternata</i>	SHARP-ANGLED PEACOCK	121	158	07 May	07 Sep
70.214	<i>Macaria liturata</i>	TAWNY-BARRED ANGLE	31	39	12 May	05 Sep
70.218	<i>Chiasmia clathrata</i>	LATTICED HEATH	3	3	28 May	12 Sep
70.221	<i>Cepphis advenaria</i>	LITTLE THORN	8	8	11 May	16 Jun
70.222	<i>Petrophora chlorosata</i>	BROWN SILVER-LINE	55	95	07 May	24 Jul
70.223	<i>Plagodis pulveraria</i>	BARRED UMBER	2	2	06 Jun	06 Jun

<i>Code</i>	<i>Taxon</i>	<i>Vernacular</i>	<i>Records</i>	<i>Individuals</i>	<i>Earliest</i>	<i>Latest</i>
70.224	<i>Plagodis dolabraria</i>	SCORCHED WING	99	181	25 May	11 Jul
70.225	<i>Pachynemias hippocastanaria</i>	HORSE CHESTNUT	21	71	14 Apr	22 Sep
70.226	<i>Opisthograptis luteolata</i>	BRIMSTONE MOTH	781	3184	10 Apr	29 Oct
70.227	<i>Epione repandaria</i>	BORDERED BEAUTY	41	42	11 Jul	29 Sep
70.229	<i>Pseudopanthera macularia</i>	SPECKLED YELLOW	15	37	15 May	17 Jul
70.230	<i>Angerona prunaria</i>	ORANGE MOTH	1	1	27 Jun	27 Jun
70.231	<i>Apeira syringaria</i>	LILAC BEAUTY	11	12	24 Jun	14 Sep
70.233	<i>Ennomos quercinaria</i>	AUGUST THORN	3	5	30 Jul	12 Aug
70.234	<i>Ennomos alniaria</i>	CANARY-SHOULDERED THORN	143	209	23 Jul	22 Sep
70.235	<i>Ennomos fuscantaria</i>	DUSKY THORN	275	936	27 Jul	04 Oct
70.236	<i>Ennomos erosaria</i>	SEPTEMBER THORN	20	36	15 Jul	15 Sep
70.237	<i>Selenia dentaria</i>	EARLY THORN	218	326	04 Feb	07 Sep
70.239	<i>Selenia tetralunaria</i>	PURPLE THORN	27	34	13 Apr	24 Aug
70.240	<i>Odontopera bidentata</i>	SCALLOPED HAZEL	54	76	08 May	28 Jul
70.241	<i>Crocallis elinguarina</i>	SCALLOPED OAK	191	314	09 Jun	06 Sep
70.243	<i>Ourapteryx sambucaria</i>	SWALLOW-TAILED MOTH	88	147	25 Jun	04 Aug
70.244	<i>Colotois pennaria</i>	FEATHERED THORN	57	123	14 Oct	17 Dec
70.245	<i>Alsophila aescularia</i>	MARCH MOTH	26	35	21 Mar	24 Apr
70.247	<i>Phigalia pilosaria</i>	PALE BRINDLED BEAUTY	4	4	04 Feb	28 Dec
70.248	<i>Lycia hirtaria</i>	BRINDLED BEAUTY	59	85	05 Apr	26 May
70.251	<i>Biston strataria</i>	OAK BEAUTY	57	89	28 Jan	13 May
70.252	<i>Biston betularia</i>	PEPPERED MOTH	194	282	28 Mar	11 Aug
70.253	<i>Agriopsis leucophaearia</i>	SPRING USHER	1	1	04 Feb	04 Feb
70.255	<i>Agriopsis marginaria</i>	DOTTED BORDER	8	10	16 Feb	08 Apr
70.256	<i>Erannis defoliaria</i>	MOTTLED UMBER	21	39	05 Jan	31 Dec
70.257	<i>Menophra abruptaria</i>	WAVED UMBER	48	72	11 Apr	08 Jun
70.258	<i>Peribatodes rhomboidaria</i>	WILLOW BEAUTY	696	1451	12 May	29 Oct
70.262	<i>Selidosema brunnearia</i>	BORDERED GREY	1	4	17 Aug	17 Aug

<i>Code</i>	<i>Taxon</i>	<i>Vernacular</i>	<i>Records</i>	<i>Individuals</i>	<i>Earliest</i>	<i>Latest</i>
70.263	<i>Cleora cinctaria</i>	RINGED CARPET	3	3	10 May	23 Jul
70.264	<i>Deileptenia ribeata</i>	SATIN BEAUTY	3	3	17 Jul	27 Jul
70.265	<i>Alcis repandata</i>	MOTTLED BEAUTY	38	49	11 Jun	07 Sep
70.270	<i>Ectropis crepuscularia</i>	ENGRAILED	49	94	13 Apr	23 Sep
70.272	<i>Paradarisa consonaria</i>	SQUARE SPOT	6	7	12 Apr	09 Jun
70.273	<i>Parectropis similaria</i>	BRINDLED WHITE-SPOT	3	4	10 Jun	07 Jul
70.275	<i>Ematurga atomaria</i>	COMMON HEATH	18	26	22 May	12 Aug
70.276	<i>Bupalus piniaria</i>	BORDERED WHITE	7	12	02 Jun	07 Jul
70.277	<i>Cabera pusaria</i>	COMMON WHITE WAVE	73	90	12 May	02 Sep
70.278	<i>Cabera exanthemata</i>	COMMON WAVE	158	277	11 May	12 Sep
70.279	<i>Lomographa bimaculata</i>	WHITE-PINION SPOTTED	8	9	09 May	23 Jun
70.280	<i>Lomographa temerata</i>	CLOUDED SILVER	132	243	24 May	28 Jul
70.282	<i>Theria primaria</i>	EARLY MOTH	5	7	11 Mar	13 Apr
70.283	<i>Campaea margaritaria</i>	LIGHT EMERALD	255	448	30 May	08 Oct
70.284	<i>Hylaea fasciaria</i>	BARRED RED	18	20	08 Jun	02 Sep
70.287	<i>Charissa obscurata</i>	ANNULET	2	3	24 Jul	03 Aug
70.288	<i>Cleorodes lichenaria</i>	BRUSSELS LACE	181	306	04 Jun	18 Oct
70.292	<i>Dyscia fagaria</i>	GREY SCALLOPED BAR	1	1	23 Jul	23 Jul
70.294	<i>Aspitates ochrearia</i>	YELLOW BELLE	21	30	07 May	22 Sep
70.295	<i>Perconia strigillaria</i>	GRASS WAVE	2	2	05 Jun	08 Jun
70.297	<i>Pseudoterpna pruinata</i>	GRASS EMERALD	10	38	11 Jul	17 Aug
70.299	<i>Geometra papilionaria</i>	LARGE EMERALD	21	25	06 Jun	30 Jul
70.300	<i>Comibaena bajularia</i>	BLOTCHED EMERALD	2	2	16 Jun	28 Jun
70.302	<i>Hemistola chrysoprasaria</i>	SMALL EMERALD	25	30	09 Jun	13 Sep
70.303	<i>Jodis lactearia</i>	LITTLE EMERALD	4	4	09 Jun	27 Jul
70.305	<i>Hemithea aestivaria</i>	COMMON EMERALD	117	182	21 Jun	30 Aug
70.306	<i>Chlorissa viridata</i>	SMALL GRASS EMERALD	1	3	05 Jun	05 Jun
71.003	<i>Cerura vinula</i>	PUSS MOTH	32	37	03 May	09 Jul

<i>Code</i>	<i>Taxon</i>	<i>Vernacular</i>	<i>Records</i>	<i>Individuals</i>	<i>Earliest</i>	<i>Latest</i>
71.005	<i>Furcula furcula</i>	SALLOW KITTEN	34	40	25 May	24 Aug
71.006	<i>Furcula bicuspis</i>	ALDER KITTEN	3	3	01 Jun	04 Jun
71.007	<i>Furcula bifida</i>	POPLAR KITTEN	9	9	09 May	18 Aug
71.009	<i>Stauropus fagi</i>	LOBSTER MOTH	15	15	29 May	30 Jul
71.010	<i>Drymonia dodonaea</i>	MARbled BROWN	21	24	11 May	24 Jun
71.011	<i>Drymonia ruficornis</i>	LUNAR MARbled BROWN	37	60	14 Apr	13 May
71.012	<i>Notodonta dromedarius</i>	IRON PROMINENT	69	75	04 May	31 Aug
71.013	<i>Notodonta ziczac</i>	PEBBLE PROMINENT	159	210	13 Apr	26 Aug
71.016	<i>Peridea anceps</i>	GREAT PROMINENT	38	63	24 Apr	04 Jun
71.017	<i>Pheosia tremula</i>	SWALLOW PROMINENT	116	163	05 Apr	05 Sep
71.018	<i>Pheosia gnoma</i>	LESSER SWALLOW PROMINENT	108	161	04 May	01 Sep
71.020	<i>Pterostoma palpina</i>	PALE PROMINENT	55	69	13 Apr	27 Aug
71.021	<i>Ptilodon capucina</i>	COXCOMB PROMINENT	38	45	07 May	14 Sep
71.025	<i>Phalera bucephala</i>	BUFF-TIP	194	316	26 May	24 Aug
71.027	<i>Clostera curtula</i>	CHOCOLATE-TIP	15	15	07 May	15 Aug
72.001	<i>Scoliopteryx libatrix</i>	HERALD	33	34	Unavailable	Unavailable
72.002	<i>Rivula sericealis</i>	STRAW DOT	326	852	28 May	04 Oct
72.003	<i>Hypena proboscidalis</i>	SNOUT	470	1190	30 May	29 Oct
72.006	<i>Hypena obsitalis</i>	BLOXWORTH SNOUT	4	6	14 Jul	08 Dec
72.007	<i>Hypena crassalis</i>	BEAUTIFUL SNOUT	5	8	22 Jun	27 Aug
72.009	<i>Leucoma salicis</i>	WHITE SATIN	9	10	22 Jun	20 Jul
72.010	<i>Lymantria monacha</i>	BLACK ARCHES	123	227	15 Jul	07 Sep
72.011	<i>Lymantria dispar</i>	GYPSY MOTH	1	1	17 Aug	17 Aug
72.012	<i>Euproctis chrysorrhoea</i>	BROWN-TAIL	66	692	03 Jul	23 Aug
72.013	<i>Euproctis similis</i>	YELLOW-TAIL	133	295	08 Jul	12 Sep
72.015	<i>Calliteara pudibunda</i>	PALE TUSOCK	153	297	28 Mar	05 Jul
72.016	<i>Dicallomera fascelina</i>	DARK TUSOCK	1	1	11 Jul	11 Jul
72.017	<i>Orgyia antiqua</i>	VAPOURER	21	22	09 Jun	24 Sep

<i>Code</i>	<i>Taxon</i>	<i>Vernacular</i>	<i>Records</i>	<i>Individuals</i>	<i>Earliest</i>	<i>Latest</i>
72.019	<i>Spilosoma lutea</i>	BUFF ERMINE	528	1524	09 May	15 Sep
72.020	<i>Spilosoma lubricipeda</i>	WHITE ERMINE	298	888	06 May	31 Aug
72.022	<i>Diaphora mendica</i>	MUSLIN MOTH	147	213	28 Mar	31 Jul
72.023	<i>Diacrisia sannio</i>	CLOUDED BUFF	3	3	09 Jun	25 Jun
72.024	<i>Phragmatobia fuliginosa</i>	RUBY TIGER	175	365	10 May	19 Sep
72.025	<i>Parasemia plantaginis</i>	WOOD TIGER	12	21	26 May	27 Jun
72.026	<i>Arctia caja</i>	GARDEN TIGER	93	134	21 Jun	31 Aug
72.027	<i>Arctia villica</i>	CREAM-SPOT TIGER	28	38	06 May	16 Jul
72.029	<i>Callimorpha dominula</i>	SCARLET TIGER	57	111	17 Jun	06 Aug
72.030	<i>Euplagia quadripunctaria</i>	JERSEY TIGER	164	379	20 Jul	12 Sep
72.031	<i>Tyria jacobaeae</i>	CINNABAR	117	151	06 May	04 Aug
72.035	<i>Mitochrista miniata</i>	ROSY FOOTMAN	216	412	04 Jul	06 Sep
72.036	<i>Nudaria mundana</i>	MUSLIN FOOTMAN	24	40	16 Jun	25 Jul
72.037	<i>Thumatha senex</i>	ROUND-WINGED MUSLIN	11	17	25 Jun	10 Aug
72.038	<i>Cybosia mesomella</i>	FOUR-DOTTED FOOTMAN	10	20	16 Jun	28 Aug
72.041	<i>Lithosia quadra</i>	FOUR-SPOTTED FOOTMAN	113	495	14 Jul	07 Oct
72.042	<i>Atolmis rubricollis</i>	RED-NECKED FOOTMAN	1	1	07 Jul	07 Jul
72.043	<i>Eilema depressa</i>	BUFF FOOTMAN	81	194	07 Jun	22 Sep
72.044	<i>Eilema griseola</i>	DINGY FOOTMAN	312	1037	22 Jun	26 Sep
72.045	<i>Eilema lurideola</i>	COMMON FOOTMAN	286	1511	22 Jun	26 Aug
72.046	<i>Eilema complana</i>	SCARCE FOOTMAN	47	112	20 Jun	05 Aug
72.047	<i>Eilema caniola</i>	HOARY FOOTMAN	1	1	20 Jul	20 Jul
72.049	<i>Eilema sororcula</i>	ORANGE FOOTMAN	131	339	10 May	17 Aug
72.051	<i>Paracolax tristalis</i>	CLAY FAN-FOOT	1	1	23 Jul	23 Jul
72.053	<i>Herminia tarsipennalis</i>	FAN-FOOT	108	176	07 Jun	07 Aug
72.055	<i>Herminia grisealis</i>	SMALL FAN-FOOT	61	83	08 Jun	18 Aug
72.060	<i>Hypenodes humidalis</i>	MARSH OBLIQUE-BARRED	2	5	18 Jul	30 Jul
72.061	<i>Schrankia costaestrigalis</i>	PINION-STREAKED SNOUT	47	55	08 Jun	28 Oct

<i>Code</i>	<i>Taxon</i>	<i>Vernacular</i>	<i>Records</i>	<i>Individuals</i>	<i>Earliest</i>	<i>Latest</i>
72.062	<i>Schrankia taenialis</i>	WHITE-LINE SNOUT	1	1	30 Jul	30 Jul
72.063	<i>Lygephila pastinum</i>	BLACKNECK	4	7	27 Jun	11 Jul
72.067	<i>Phytometra viridaria</i>	SMALL PURPLE-BARRED	6	12	04 May	25 Jul
72.069	<i>Laspeyria flexula</i>	BEAUTIFUL HOOK-TIP	62	93	28 May	02 Sep
72.072	<i>Eublemma ostrina</i>	PURPLE MARBLED	1	1	31 Jan	31 Jan
72.073	<i>Eublemma parva</i>	SMALL MARBLED	1	1	25 Jul	25 Jul
72.074	<i>Eublemma purpurina</i>	BEAUTIFUL MARBLED	1	1	26 Aug	26 Aug
72.076	<i>Catocala fraxini</i>	CLIFDEN NONPAREIL	7	7	07 Sep	09 Oct
72.078	<i>Catocala nupta</i>	RED UNDERWING	12	12	09 Aug	30 Oct
72.082	<i>Catocala promissa</i>	LIGHT CRIMSON UNDERWING	1	1	24 Jul	24 Jul
72.083	<i>Euclidia glyphica</i>	BURNET COMPANION	71	111	06 May	27 Jun
72.084	<i>Euclidia mi</i>	MOTHER SHIPTON	18	20	28 May	02 Jul
73.001	<i>Abrostola tripartita</i>	SPECTACLE	315	495	28 Mar	28 Oct
73.002	<i>Abrostola triplasia</i>	DARK SPECTACLE	46	58	29 May	27 Sep
73.005	<i>Ctenoplusia limbirena</i>	SCAR BANK GEM	1	1	25 Oct	25 Oct
73.008	<i>Chrysodeixis chalcites</i>	GOLDEN TWIN-SPOT	1	1	16 Sep	16 Sep
73.010	<i>Macdunnoughia confusa</i>	DEWICK'S PLUSIA	2	2	14 Aug	27 Sep
73.012	<i>Diachrysia chrysitis</i>	BURNISHED BRASS	215	399	26 May	04 Oct
73.015	<i>Autographa gamma</i>	SILVER Y	956	2592	02 Jan	16 Dec
73.016	<i>Autographa pulchrina</i>	BEAUTIFUL GOLDEN Y	29	30	03 Jun	26 Aug
73.017	<i>Autographa jota</i>	PLAIN GOLDEN Y	40	49	08 Jun	07 Sep
73.022	<i>Plusia festucae</i>	GOLD SPOT	47	61	26 May	29 Sep
73.024	<i>Deltote pygarga</i>	MARBLED WHITE SPOT	60	77	30 May	29 Aug
73.031	<i>Tyta luctuosa</i>	FOUR-SPOTTED	2	2	01 Jun	15 Jul
73.032	<i>Colocasia coryli</i>	NUT-TREE TUSOCK	105	134	03 Apr	28 Aug
73.033	<i>Diloba caeruleocephala</i>	FIGURE OF EIGHT	3	4	26 Oct	31 Oct
73.036	<i>Acronicta alni</i>	ALDER MOTH	37	47	26 May	08 Jul
73.038	<i>Acronicta psi</i>	GREY DAGGER	1	1	30 Jul	30 Jul

<i>Code</i>	<i>Taxon</i>	<i>Vernacular</i>	<i>Records</i>	<i>Individuals</i>	<i>Earliest</i>	<i>Latest</i>
73.039	<i>Acronicta aceris</i>	SYCAMORE	28	31	02 Jun	30 Jul
73.040	<i>Acronicta leporina</i>	MILLER	26	32	06 Jun	30 Jul
73.045	<i>Acronicta rumicis</i>	KNOT GRASS	95	114	02 Apr	21 Sep
73.046	<i>Subacronicta megacephala</i>	POPLAR GREY	53	68	26 May	30 Jul
73.047	<i>Craniophora ligustri</i>	CORONET	122	199	12 May	24 Aug
73.048	<i>Panemeria tenebrata</i>	SMALL YELLOW UNDERWING	2	2	25 May	16 Jul
73.050	<i>Cucullia absinthii</i>	WORMWOOD	4	4	17 Jul	14 Aug
73.052	<i>Cucullia umbratica</i>	SHARK	26	28	30 May	25 Aug
73.053	<i>Cucullia chamomillae</i>	CHAMOMILE SHARK	1	1	06 May	06 May
73.058	<i>Cucullia verbasci</i>	MULLEIN	25	30	13 Apr	24 Jun
73.061	<i>Stilbia anomala</i>	ANOMALOUS	3	6	28 Aug	19 Sep
73.062	<i>Amphipyra pyramidea</i>	COPPER UNDERWING	27	30	06 Aug	26 Oct
73.063	<i>Amphipyra berbera</i>	SVENSSON'S COPPER UNDERWING	13	14	03 Aug	04 Oct
73.064	<i>Amphipyra tragopoginis</i>	MOUSE MOTH	22	26	06 Jul	04 Oct
73.065	<i>Asteroscopus sphinx</i>	SPRAWLER	4	12	18 Oct	14 Nov
73.068	<i>Allophyes oxyacanthae</i>	GREEN-BRINDLED CRESCENT	55	95	08 Oct	15 Nov
73.069	<i>Xylocampa areola</i>	EARLY GREY	158	380	20 Feb	27 May
73.070	<i>Pyrrhia umbra</i>	BORDERED SALLOW	8	8	06 Jun	07 Jul
73.074	<i>Heliothis peltigera</i>	BORDERED STRAW	5	6	29 Jun	05 Sep
73.076	<i>Helicoverpa armigera</i>	SCARCE BORDERED STRAW	27	44	24 Aug	28 Oct
73.080	<i>Callopietria juvenina</i>	LATIN	1	1	19 Jul	19 Jul
73.082	<i>Cryphia algae</i>	TREE-LICHEN BEAUTY	1	1	26 Jul	26 Jul
73.084	<i>Bryophila domestica</i>	MARbled BEAUTY	29	37	22 Jun	18 Sep
73.085	<i>Nyctobrya muralis</i>	MARbled GREEN	72	96	03 Jul	20 Sep
73.087	<i>Spodoptera exigua</i>	SMALL MOTTLED WILLOW	13	15	31 Jan	05 Sep
73.092	<i>Caradrina morpheus</i>	MOTTLED RUSTIC	207	434	20 May	13 Sep
73.093	<i>Caradrina kadenii</i>	CLANCY'S RUSTIC	11	15	13 Sep	29 Oct
73.095	<i>Caradrina clavipalpis</i>	PALE MOTTLED WILLOW	108	135	08 May	03 Nov

<i>Code</i>	<i>Taxon</i>	<i>Vernacular</i>	<i>Records</i>	<i>Individuals</i>	<i>Earliest</i>	<i>Latest</i>
73.099	<i>Hoplodrina ambigua</i>	VINE'S RUSTIC	352	1086	06 May	26 Oct
73.100	<i>Chilodes maritima</i>	SILKY WAINSCOT	4	6	04 Jun	29 Jul
73.101	<i>Charanyca trigrammica</i>	TREBLE LINES	243	791	05 May	20 Jul
73.102	<i>Rusina ferruginea</i>	BROWN RUSTIC	20	29	14 May	22 Jul
73.104	<i>Athetis hospes</i>	PORTER'S RUSTIC	1	1	24 Aug	24 Aug
73.105	<i>Dypterygia scabriuscula</i>	BIRD'S WING	12	13	01 Jun	05 Aug
73.107	<i>Mormo maura</i>	OLD LADY	6	6	20 Jul	07 Sep
73.109	<i>Thalpophila matura</i>	STRAW UNDERWING	65	130	30 Jul	22 Sep
73.113	<i>Phlogophora meticulosa</i>	ANGLE SHADES	334	565	11 Feb	12 Dec
73.114	<i>Euplexia lucipara</i>	SMALL ANGLE SHADES	48	51	30 May	13 Sep
73.119	<i>Helotropha leucostigma</i>	CRESCENT	2	2	04 Aug	26 Aug
73.120	<i>Eremobia ochroleuca</i>	DUSKY SALLOW	32	43	14 Jul	14 Aug
73.121	<i>Gortyna flavago</i>	FROSTED ORANGE	41	47	25 Aug	27 Sep
73.123	<i>Hydraecia micacea</i>	ROSY RUSTIC	138	210	19 Jul	29 Oct
73.128	<i>Amphipoea oculea</i>	EAR MOTH	1	2	30 Jul	30 Jul
73.131	<i>Luperina testacea</i>	FLOUNCED RUSTIC	243	660	22 Jul	13 Oct
73.134	<i>Rhizedra lutosa</i>	LARGE WAINSCOT	46	65	16 Jul	06 Dec
73.136	<i>Nonagria typhae</i>	BULRUSH WAINSCOT	3	3	23 Aug	15 Sep
73.137	<i>Arenostola phragmitidis</i>	FEN WAINSCOT	8	11	08 Jul	06 Aug
73.139	<i>Lenisa geminipuncta</i>	TWIN-SPOTTED WAINSCOT	9	10	29 Jul	26 Aug
73.141	<i>Archanara dissoluta</i>	BROWN-VEINED WAINSCOT	2	2	29 Jul	04 Aug
73.142	<i>Coenobia rufa</i>	SMALL RUFIOUS	10	10	18 Jul	24 Aug
73.144	<i>Denticucullus pygmina</i>	SMALL WAINSCOT	26	37	11 Jul	13 Oct
73.147	<i>Photodes minima</i>	SMALL DOTTED BUFF	13	18	12 Jun	26 Jul
73.148	<i>Photodes morrisii</i>	MORRIS'S WAINSCOT	1	1	26 Jun	26 Jun
73.151	<i>Globia sparganii</i>	WEBB'S WAINSCOT	3	3	11 Aug	12 Sep
73.154	<i>Apamea remissa</i>	DUSKY BROCADE	37	44	28 May	27 Aug
73.155	<i>Apamea epomidion</i>	CLOUDED BRINDLE	20	22	10 Jun	04 Aug

<i>Code</i>	<i>Taxon</i>	<i>Vernacular</i>	<i>Records</i>	<i>Individuals</i>	<i>Earliest</i>	<i>Latest</i>
73.156	<i>Apamea crenata</i>	CLOUDED-BORDERED BRINDLE	54	99	25 May	27 Jul
73.157	<i>Apamea anceps</i>	LARGE NUTMEG	1	1	30 May	30 May
73.158	<i>Apamea sordens</i>	RUSTIC SHOULDER-KNOT	67	102	04 May	02 Aug
73.159	<i>Apamea unanimitis</i>	SMALL CLOUDED BRINDLE	12	19	11 May	20 Jul
73.160	<i>Apamea scolopacina</i>	SLENDER BRINDLE	9	11	14 Jul	03 Aug
73.162	<i>Apamea monoglypha</i>	DARK ARCHES	481	1389	25 Jan	17 Sep
73.163	<i>Apamea lithoxylaea</i>	LIGHT ARCHES	53	64	09 Jun	12 Aug
73.164	<i>Apamea sublustris</i>	REDDISH LIGHT ARCHES	7	7	25 May	15 Jul
73.168	<i>Lateroligia ophiogramma</i>	DOUBLE LOBED	10	12	18 Jul	26 Aug
73.169	<i>Mesapamea secalis</i>	COMMON RUSTIC	1	2	30 Jul	30 Jul
73.171	<i>Litoligia literosa</i>	ROSY MINOR	23	31	18 Jun	07 Sep
73.172	<i>Mesoligia furuncula</i>	CLOAKED MINOR	36	40	22 Jun	15 Sep
73.176	<i>Oligia fasciuncula</i>	MIDDLE-BARRED MINOR	53	71	28 May	19 Jul
73.178	<i>Leucochlaena oditis</i>	BEAUTIFUL GOTHIC	13	18	05 Sep	27 Oct
73.179	<i>Tiliacea citrigo</i>	ORANGE SALLOW	1	1	08 Oct	08 Oct
73.180	<i>Tiliacea aurago</i>	BARRED SALLOW	60	79	20 Sep	01 Nov
73.181	<i>Xanthia togata</i>	PINK-BARRED SALLOW	21	25	14 Sep	08 Oct
73.182	<i>Cirrhia icteritia</i>	SALLOW	36	45	07 Aug	30 Oct
73.186	<i>Agrochola lychnidis</i>	BEADED CHESTNUT	177	702	17 Sep	08 Dec
73.188	<i>Agrochola helvola</i>	FLOUNCED CHESTNUT	2	2	28 Oct	30 Oct
73.189	<i>Agrochola lota</i>	RED-LINE QUAKER	90	157	29 Sep	09 Dec
73.190	<i>Agrochola macilenta</i>	YELLOW-LINE QUAKER	19	21	21 Oct	09 Dec
73.191	<i>Agrochola haematidea</i>	SOUTHERN CHESTNUT	2	2	18 Oct	23 Oct
73.192	<i>Agrochola circellaris</i>	BRICK	2	2	26 Oct	12 Dec
73.193	<i>Omphaloscelis lunosa</i>	LUNAR UNDERWING	267	1957	18 Aug	14 Nov
73.194	<i>Conistra vaccinii</i>	CHESTNUT	38	44	Unavailable	Unavailable
73.195	<i>Conistra ligula</i>	DARK CHESTNUT	15	15	Unavailable	Unavailable
73.196	<i>Conistra rubiginosa</i>	BLACK-SPOTTED CHESTNUT	1	1	05 Jan	05 Jan

<i>Code</i>	<i>Taxon</i>	<i>Vernacular</i>	<i>Records</i>	<i>Individuals</i>	<i>Earliest</i>	<i>Latest</i>
73.197	<i>Conistra rubiginea</i>	DOTTED CHESTNUT	5	5	Unavailable	Unavailable
73.200	<i>Lithophane semibrunnea</i>	TAWNY PINION	1	1	Unavailable	Unavailable
73.201	<i>Lithophane socia</i>	PALE PINION	15	15	Unavailable	Unavailable
73.202	<i>Lithophane ornitopus</i>	GREY SHOULDER-KNOT	7	10	Unavailable	Unavailable
73.206	<i>Lithophane leautieri</i>	BLAIR'S SHOULDER-KNOT	22	25	30 Sep	12 Nov
73.209	<i>Xylena vetusta</i>	RED SWORD-GRASS	3	3	Unavailable	Unavailable
73.210	<i>Eupsilia transversa</i>	SATELLITE	8	9	Unavailable	Unavailable
73.212	<i>Ipimorpha retusa</i>	DOUBLE KIDNEY	2	2	30 Jul	14 Aug
73.213	<i>Ipimorpha subtusa</i>	OLIVE	1	1	04 Aug	04 Aug
73.216	<i>Cosmia trapezina</i>	DUN-BAR	78	100	05 Jul	06 Sep
73.217	<i>Cosmia pyralina</i>	LUNAR-SPOTTED PINION	10	10	07 Jul	30 Jul
73.219	<i>Atethmia centrigo</i>	CENTRE-BARRED SALLOW	38	66	29 Aug	23 Sep
73.220	<i>Brachylomia viminalis</i>	MINOR SHOULDER-KNOT	8	22	16 Jun	27 Jul
73.221	<i>Parastichtis suspecta</i>	SUSPECTED	9	11	14 Jul	24 Aug
73.222	<i>Apterogenum ypsilon</i>	DINGY SHEARS	4	4	10 Jul	27 Jul
73.223	<i>Dryobota labecula</i>	OAK RUSTIC	8	23	19 Oct	08 Dec
73.224	<i>Griposia aprilina</i>	MERVEILLE DU JOUR	58	88	01 Oct	26 Nov
73.225	<i>Dryobotodes eremita</i>	BRINDLED GREEN	8	9	13 Sep	14 Nov
73.227	<i>Dryobotodes tenebrosa</i>	SOMBRE BROCADE	5	10	19 Sep	22 Sep
73.229	<i>Trigonophora flammea</i>	FLAME BROCADE	12	14	17 Oct	13 Nov
73.230	<i>Aporophyla australis</i>	FEATHERED BRINDLE	34	123	03 Sep	27 Oct
73.231	<i>Aporophyla lutulenta</i>	DEEP-BROWN DART	3	3	23 Aug	05 Oct
73.233	<i>Aporophyla nigra</i>	BLACK RUSTIC	178	413	06 Sep	14 Dec
73.235	<i>Polymixis lichenea</i>	FEATHERED RANUNCULUS	134	315	26 Jun	13 Nov
73.237	<i>Polymixis flavicincta</i>	LARGE RANUNCULUS	13	15	12 Sep	27 Oct
73.241	<i>Panolis flammea</i>	PINE BEAUTY	12	13	03 Apr	28 May
73.242	<i>Orthosia incerta</i>	CLOUDED DRAB	152	331	24 Jan	27 May
73.244	<i>Orthosia cerasi</i>	COMMON QUAKER	325	1221	26 Jan	02 Jun

<i>Code</i>	<i>Taxon</i>	<i>Vernacular</i>	<i>Records</i>	<i>Individuals</i>	<i>Earliest</i>	<i>Latest</i>
73.245	<i>Orthosia cruda</i>	SMALL QUAKER	85	170	20 Feb	17 May
73.247	<i>Orthosia gracilis</i>	POWDERED QUAKER	48	66	01 Apr	19 May
73.249	<i>Orthosia gothica</i>	HEBREW CHARACTER	430	1841	02 Jan	13 Jun
73.250	<i>Anorthoa munda</i>	TWIN-SPOTTED QUAKER	40	68	15 Mar	30 May
73.252	<i>Tholera cespitis</i>	HEDGE RUSTIC	16	18	27 Aug	22 Sep
73.253	<i>Tholera decimalis</i>	FEATHERED GOTHIC	31	54	27 Aug	18 Sep
73.254	<i>Cerapteryx graminis</i>	ANTLER MOTH	2	7	27 Jul	13 Aug
73.255	<i>Anarta trifolii</i>	NUTMEG	6	6	08 May	09 Aug
73.257	<i>Anarta myrtilli</i>	BEAUTIFUL YELLOW UNDERWING	8	42	11 Jul	15 Sep
73.261	<i>Polia nebulosa</i>	GREY ARCHES	15	19	10 Jun	11 Jul
73.263	<i>Lacanobia w-latinum</i>	LIGHT BROCADE	36	42	12 May	21 Jun
73.264	<i>Lacanobia thalassina</i>	PALE-SHOULDERED BROCADE	8	8	07 Jun	11 Jul
73.265	<i>Lacanobia contigua</i>	BEAUTIFUL BROCADE	4	4	24 May	26 Aug
73.266	<i>Lacanobia suasa</i>	DOG'S TOOTH	3	3	10 Jun	03 Aug
73.267	<i>Lacanobia oleracea</i>	BRIGHT-LINE BROWN-EYE	461	921	08 May	14 Sep
73.268	<i>Lacanobia splendens</i>	SPLENDID BROCADE	1	1	21 Jul	21 Jul
73.270	<i>Melanchra persicariae</i>	DOT MOTH	53	68	08 Jun	13 Aug
73.271	<i>Ceramica pisi</i>	BROOM MOTH	7	10	07 Jun	18 Aug
73.273	<i>Hada plebeja</i>	SHEARS	58	82	19 May	06 Aug
73.274	<i>Mamestra brassicae</i>	CABBAGE MOTH	65	79	07 May	08 Sep
73.276	<i>Sideridis rivularis</i>	CAMPION	1	3	08 Jun	08 Jun
73.279	<i>Hecatera bicolorata</i>	BROAD-BARRED WHITE	8	9	02 Jun	11 Jul
73.281	<i>Hadena bicruris</i>	LYCHNIS	61	69	05 May	01 Sep
73.284	<i>Hadena albimacula</i>	WHITE SPOT	1	1	06 Jun	06 Jun
73.286	<i>Hadena perplexa</i>	TAWNY SHEARS	11	11	07 May	07 Sep
73.289	<i>Mythimna pudorina</i>	STRIPED WAINSCOT	19	24	06 Jul	30 Jul
73.290	<i>Mythimna conigera</i>	BROWN-LINE BRIGHT-EYE	42	80	08 May	17 Aug
73.291	<i>Mythimna pallens</i>	COMMON WAINSCOT	366	842	28 May	07 Oct

Code	Taxon	Vernacular	Records	Individuals	Earliest	Latest
73.293	<i>Mythimna impura</i>	SMOKY WAINSCOT	241	521	30 May	30 Sep
73.294	<i>Mythimna straminea</i>	SOUTHERN WAINSCOT	10	12	08 Jul	07 Sep
73.295	<i>Mythimna vitellina</i>	DELICATE	19	32	09 Jun	01 Nov
73.296	<i>Mythimna unipuncta</i>	AMERICAN WAINSCOT OR WHITE-SPECK	19	26	24 Jul	09 Dec
73.297	<i>Mythimna albipuncta</i>	WHITE-POINT	194	309	24 May	28 Sep
73.298	<i>Mythimna ferrago</i>	CLAY	125	214	05 Jun	31 Aug
73.300	<i>Mythimna l-album</i>	L-ALBUM WAINSCOT	85	144	27 May	14 Nov
73.301	<i>Leucania comma</i>	SHOULDER-STRIPED WAINSCOT	71	107	27 May	15 Aug
73.302	<i>Leucania obsoleta</i>	OBSCURE WAINSCOT	3	3	04 Jun	26 Jun
73.303	<i>Leucania putrescens</i>	DEVONSHIRE WAINSCOT	1	1	30 Jul	30 Jul
73.304	<i>Leucania loreyi</i>	COSMOPOLITAN	2	2	23 Jun	05 Sep
73.307	<i>Peridroma saucia</i>	PEARLY UNDERWING	27	33	08 Jan	09 Dec
73.308	<i>Actebia praecox</i>	PORTLAND MOTH	1	1	31 Aug	31 Aug
73.314	<i>Euxoa nigricans</i>	GARDEN DART	1	1	05 Aug	05 Aug
73.317	<i>Agrotis exclamationis</i>	HEART AND DART	663	6473	07 May	13 Sep
73.319	<i>Agrotis segetum</i>	TURNIP MOTH	52	60	23 Mar	12 Dec
73.320	<i>Agrotis clavis</i>	HEART AND CLUB	182	604	26 May	20 Aug
73.322	<i>Agrotis vestigialis</i>	ARCHER'S DART	3	35	30 Jul	06 Sep
73.323	<i>Agrotis ripae</i>	SAND DART	1	1	19 Jul	19 Jul
73.324	<i>Agrotis trux</i>	CRESCENT DART	15	18	20 Jun	13 Aug
73.325	<i>Agrotis puta</i>	SHUTTLE-SHAPED DART	307	658	13 Apr	02 Nov
73.327	<i>Agrotis ipsilon</i>	DARK SWORD-GRASS	120	160	24 Jan	14 Dec
73.328	<i>Axylia putris</i>	FLAME	288	673	27 May	15 Sep
73.329	<i>Ochropleura plecta</i>	FLAME SHOULDER	645	2374	28 Mar	21 Sep
73.330	<i>Ochropleura leucogaster</i>	RADFORD'S FLAME SHOULDER	6	8	27 Sep	24 Oct
73.332	<i>Diarsia brunnea</i>	PURPLE CLAY	18	20	13 Jun	20 Jul
73.333	<i>Diarsia mendica</i>	INGRAILED CLAY	133	225	26 May	23 Sep
73.334	<i>Diarsia rubi</i>	SMALL SQUARE-SPOT	538	3666	11 May	26 Sep

<i>Code</i>	<i>Taxon</i>	<i>Vernacular</i>	<i>Records</i>	<i>Individuals</i>	<i>Earliest</i>	<i>Latest</i>
73.336	<i>Cerastis rubricosa</i>	RED CHESTNUT	20	23	03 Mar	08 May
73.338	<i>Lycophotia porphyrea</i>	TRUE LOVER'S KNOT	63	246	01 Jun	10 Aug
73.342	<i>Noctua pronuba</i>	LARGE YELLOW UNDERWING	1214	10589	08 May	08 Dec
73.343	<i>Noctua fimbriata</i>	BROAD-BORDERED YELLOW UNDERWING	69	95	09 Jun	28 Sep
73.345	<i>Noctua comes</i>	LESSER YELLOW UNDERWING	313	603	08 Jun	02 Nov
73.346	<i>Noctua interjecta</i>	LEAST YELLOW UNDERWING	33	41	21 Jun	02 Sep
73.347	<i>Noctua janthina</i>	LANGMAID'S YELLOW UNDERWING	2	2	19 Sep	25 Oct
73.348	<i>Noctua janthe</i>	LESSER BROAD-BORDERED YELLOW UNDERWING	299	1475	06 Jul	22 Sep
73.352	<i>Anaplectoides prasina</i>	GREEN ARCHES	15	17	07 Jun	12 Jul
73.355	<i>Xestia castanea</i>	NEGLECTED RUSTIC	9	21	02 Sep	22 Sep
73.356	<i>Xestia agathina</i>	HEATH RUSTIC	14	25	02 Sep	22 Sep
73.357	<i>Xestia xanthographa</i>	SQUARE-SPOT RUSTIC	643	4297	22 May	31 Oct
73.358	<i>Xestia sexstrigata</i>	SIX-STRIPED RUSTIC	84	241	07 Aug	06 Sep
73.359	<i>Xestia c-nigrum</i>	SETACEOUS HEBREW CHARACTER	602	3836	11 Apr	01 Nov
73.361	<i>Xestia triangulum</i>	DOUBLE SQUARE-SPOT	64	76	07 Jun	30 Aug
73.365	<i>Eugnorisma glareosa</i>	AUTUMNAL RUSTIC	12	20	19 Sep	12 Oct
73.368	<i>Naenia typica</i>	GOTHIC	4	4	22 Jun	27 Jul
74.002	<i>Meganola albula</i>	KENT BLACK ARCHES	37	42	22 Jun	28 Aug
74.003	<i>Nola cucullatella</i>	SHORT-CLOAKED MOTH	30	34	09 May	25 Jul
74.004	<i>Nola confusalis</i>	LEAST BLACK ARCHES	92	143	06 May	27 Jun
74.007	<i>Bena bicolorana</i>	SCARCE SILVER-LINES	6	6	08 Jul	26 Jul
74.008	<i>Pseudoips prasinana</i>	GREEN SILVER-LINES	14	23	25 May	21 Jul
74.009	<i>Nycteola revayana</i>	OAK NYCTEOLINE	13	14	03 Apr	08 Dec
74.011	<i>Earias clorana</i>	CREAM-BORDERED GREEN PEA	20	24	02 Jun	27 Aug

2016 Significant Resident and Migrant Species Report

Unless stated otherwise, all records are adult moths observed at light traps. Records with vague dates, undetermined records and critical species where there is doubt are excluded (although 10km square is reported). Also excluded are species where the number of recorded 10km squares >10 and the number of records per species is >25. Sites are removed from confidential species. Where no quantity is given, a single moth is assumed. All individual counts are minimum counts.

3.004 *Phymatopus hecta* (Linnaeus, 1758) **GOLD SWIFT** Local

Recorded in: SY68; SY89; SY98. Furzebrook Road, Stoborough Heath (SY9384); female on 25 Jul (J Clarke). SY68/6187 Blackdown (SY6187); netted, 10 on 22 Jun (J Oughton). SY89/8291 Throop Heath (SY8291); field, 6 on 14 Jul (J Knowler).

50.001 *Cossus cossus* (Linnaeus, 1758) **GOAT MOTH** Nb

Recorded in: SY98. SY98/9586 Slepe Heath (SY9586); 18 Jul, leg. M Brown (D E Brown, M Brown).

52.010 *Synanthedon andrenaeformis* (Laspeyres, 1801) **ORANGE-TAILED CLEARWING** Nb

Recorded in: SY67. SY67/xxxx Chickerell (SY67); male on 16 Jul (M Cade).

52.014 *Bembecia ichneumoniformis* ([Denis & Schiffermüller], 1775) **SIX-BELTED CLEARWING** Nb

Recorded in: SY49. Seatown (SY4291); field, 10 Jul, leg. A M McVeigh (A M McVeigh, J E Carey).

53.001 *Apoda limacodes* (Hufnagel, 1766) **FESTOON** Nb

Recorded in: SU00; SY78; SY79; SY89; SY98; SY99; SZ09. Broadmayne, Spring Gardens (SY7387); 22 Jul (P Bruce-Jones). Burnbake Campsite (SY9983); 24 Jul (G M Tordoff). Corfe Hills, Broadstone (SY9996); 06 Jun; 3 on 16 Jul (J Seawright). Lytchett Bay, Lytchett Way (SY9792); 2 on 08 Jul; 16 Jul (N J Hull). Old Ram Plantation (SY8991); 2 on 04 Jul; 07 Jul (R Hiley). SU00/0609 Hedgerow (SU0609); 2 on 20 Jul (M Lowe). SY98/9983 Burnbake Plantation (SY9983); 9 on 26 Jul (G M Tordoff). Wallisdown, Benbow Crescent (SZ0594); 10 Jun (S Buckle).

54.002 *Adscita stacies* (Linnaeus, 1758) **FORESTER** Local

Recorded in: ST60; ST71; SY67. King Barrow Quarry (SY6972); field, 3 on 14 Jul; field, 4 on 14 Jul; field, 2 on 14 Jul (M S Parsons). ST60/6000 Lankham Bottom (ST6000); 5 on 16 Jun; field, 27 Jun (M S Parsons). ST60/6100 Folly Hill (ST6100); 16 Jun (M S Parsons). ST60/6601 Cerne Abbas (ST6601); field, 27 Jun (M S Parsons). ST71/002/02 Rooksmoor (SMU 2) (ST7411); field, 2 on 22 Jun (M S Warren). ST71/7410 Rooksmoor (ST7410); field, 05 Jun; field, 22 Jun (M S Warren). ST71/7411 Rooksmoor (ST7411); field, 05 Jun; field, 22 Jun; field, 4 on 22 Jun (M S Warren).

54.003 *Adscita geryon* (Hübner, [1813]) **CISTUS FORESTER** Nb

Recorded in: ST60; ST81; ST91; SY69. Folly Hill (SY6299); field, 40 on 27 Jun (M S Parsons). ST60/6000 Lankham Bottom (ST6000); field, 27 Jun (J Davis). ST60/6100 Lankham Bottom (ST6100); field, 4 on 16 Jun; field, 12 on 27 Jun; field, 7 on 27 Jun (M S Parsons). ST60/6601 Cerne Abbas (ST6601); field, 4 on 27 Jun (M S Parsons). ST60/6602 Cerne Abbas (ST6602); field, 10 on 21 Jun (M S Parsons). ST81/01 Fontmell and Melbury Downs (ST8818); field, 100 on 04 Jun (L de Whalley). ST81/8818 Clubmen's Down (ST8818); field, 27 May; field, 5 on 05 Jun; field, 10 on 11 Jun (C Argles). ST91/001/04 Fontmell and Melbury Downs (SMU 4) (ST9119); field, 27 Jun (L de Whalley). UKBMS, Southfield Hog Cliff - S5 (SY6297); field, 8 on 03 Jun (L de Whalley).

54.009 *Zygaena loniceræ* (Scheven, 1777) **NARROW-BORDERED FIVE-SPOT BURNET**

Recorded in: ST81; ST91; SY67; SY68; SY89; SZ07. Old Ram Plantation (SY8991); field, 05 Jul (R Hiley). Radipole Lake (SY6779); field, 01 Jul (J Oughton). ST81/001/19 Fontmell and Melbury Downs (SMU 19) (ST8817); field, 18 Jun (C Clapham). ST81/01 Fontmell and Melbury Downs (ST8818); field, 9 on 04 Jun; field, 7 on 11 Jun; field, 2 on 11 Jun (L de Whalley). ST81/8818 Clubmen's Down (ST8818); field, 11 on 11 Jun; field, 4 on 18 Jun (C Argles). ST81/8916 Stubbampton Bottom (ST8916); field, 05 Jul (C Argles). ST91/001/04 Fontmell and Melbury Downs (SMU 4) (ST9119); field, 27 Jun; field, 3 on 14 Jul (L de Whalley). ST91/9119 Melbury Wood (ST9119); field, 27 Jun (L de Whalley). SY68/6780 Radipole Lake (SY6780); field, 27 Jun (S Cookson). SZ07/0277 Durlston Country Park (SZ0277); field, 2 on 10 Jul (A Ashworth). UKBMS, Radipole () - S6 (SY6780); field, 05 Jul (J Rayner).

54.010 *Zygaena trifolii* (Esper, 1783) **FIVE-SPOT BURNET** Local

Recorded in: ST60; ST71; ST81; SU01; SU10; SY68; SY79; SY98. Moors Valley Country Park (SU1006); 28 Jun (R P Harley). Puddletown, Dorset (SY7594); field, 06 Aug (P Newton). Slepe Heath near Arne, (SY9486); field, 4 on 15 Jul (J Knowler). ST60/002/03 Giant Hill (SMU 3) (ST6601); field, 5 on 27 Jun (P A Pires). ST60/6602 Cerne Abbas (ST6602); field, 2 on 27 Jun (P A Pires). ST60/6701 Cerne Abbas (ST6701); field, 6 on 27 Jun (P A Pires). ST71/7310 Alners Gorse (ST7310); field, 22 Jun (M S Warren). ST81/8510 Hod Hill (ST8510); field, 4 on 22 Jul (C Argles).

- SY68/6782 Lorton Meadows (SY6782); field, 27 Jun (P Jefferies). SY68/6987 Came Down (SY6987); field, 03 Jul (J Campbell). UKBMS, 1019. 9 (SU0418); field, 05 Jul (L Smith).
- 66.005 *Eriogaster lanestris* (Linnaeus, 1758) **SMALL EGGAR** Nb
Recorded in: ST61; SY58; SY67; SY68; SY79. Lenthay Dairy House (ST6215); field, larval on 30 May (N J Howell). ST61/6610 Ryewater Farm (ST6610); field, larval on 27 Jun (W T Franklin). SY58/5088 Cogden Beach (SY5088); field, 2 larval web on 27 May; field, larval web on 27 May (M S Parsons). SY58/5187 Cogden Beach (SY5187); field, larval web on 08 Jun (M S Parsons). SY67/6478 Tidmoor Ranges (SY6478); field, larval web on 30 Jun (M S Parsons). SY68/6982 Preston, Ringstead Crescent (SY6982); 16 Apr ('Ricky' Lambert). SY68/MT 0002 Chickerell (SY6580); 2 on 05 Apr (C Pinder). SY68/MT 0006 Weymouth (SY6682); 12 Apr; 15 Apr (J Gifford). Whitehill (SY7593); 11 Apr (R M Porter).
- 66.006 *Lasiocampa trifolii* ([Denis & Schiffermüller], 1775) **GRASS EGGAR** Na
Recorded in: SY98. SY98/9585 Slepe Heath (SY9585); 2 larval on 13 Jun (D E Brown).
- 69.005 *Acherontia atropos* (Linnaeus, 1758) **DEATH'S-HEAD HAWK-MOTH** Migrant
Recorded in: SY66; SY67. SY66/MT 0001 Portland (SY6868); 10 Sep (M Cade). SY67/xxxx Chickerell (SY67); field, larval on 24 Sep (M Cade).
- 69.008 *Hemaris tityus* (Linnaeus, 1758) **NARROW-BORDERED BEE HAWK-MOTH** Na
Recorded in: SY59. SY59/5497 Powerstock Common (SY5497); field, 4 on 12 May (M S Parsons).
- 69.009 *Hemaris fuciformis* (Linnaeus, 1758) **BROAD-BORDERED BEE HAWK-MOTH** Nb
Recorded in: SY79; SY89; SY99; SZ09. Tonerspuddle Heath (SY8291); field, 05 Jun (D Foot). Upton Country Park (SY9892); field, 29 May (J Samways). Whitehill (SY7593); field, 07 Jun (R M Porter).
- 69.014 *Hyles gallii* (Rottemburg, 1775) **BEDSTRAW HAWK-MOTH** Migrant
Recorded in: SZ08. SZ08/0383 Studland (SZ0383); 29 Aug (D C G Brown).
- 69.015 *Hyles livornica* (Esper, [1804]) **STRIPED HAWK-MOTH** Migrant
Recorded in: SY69. SY69/MT 0001 Frampton (SY6294); 12 Jun (H C R Wheatcroft).
- 70.010 *Idaea sylvestraria* (Hübner, [1799]) **DOTTED BORDER WAVE** Nb
Recorded in: SY89; SY98. Furzebrook Road, Stoborough Heath (SY9384); 24 Jul (J Clarke). Oak Hill, Wareham Forest (SY8893); 6 on 14 Jul, leg. M S Parsons (M S Parsons, Z Randle, C Kelly). Oakers Wood (SY8091); 30 Jul (D Foot). SY98/9289 Sandford (SY9289); 23 Jul (G Lester). SY98/9585 Slepe Heath (SY9585); 6 on 18 Jul, leg. M S Parsons (M S Parsons, D E Brown).
- 70.015 *Idaea emarginata* (Linnaeus, 1758) **SMALL SCALLOP** Local
Recorded in: ST61; SZ09. ST61/6013 Thornford (ST6013); 07 Aug (N J Howell).
- 70.017 *Idaea degeneraria* (Hübner, [1799]) **PORTLAND RIBBON WAVE** RDB3
Recorded in: SY49; SY66; SY67; SY68. SY49/MT 0002 Bothenhampton (SY4892); 17 Sep (M S Parsons). SY66/MT 0001 Portland (SY6868); 13 Sep (M Cade). SY67/6970 Isle of Portland (SY6970); 3 on 11 Jul; 2 on 13 Jul (J Knowler). SY67/MT 0005 Portland (SY6871); 14 Jul (J Williamson). SY68/6085 Portesham (SY6085); 12 Sep (J Oughton). West Grove Terrace (SY6972); 24 Jun (M Cade).
- 70.025 *Scopula immutata* (Linnaeus, 1758) **LESSER CREAM WAVE** Local
Recorded in: SU10; SY49; SY79. Moors Valley Country Park (SU1006); 26 Jul, leg. P Budd; 26 Jul (R P Harley). SY49/4092 Filcombe Farm (SY4092); 11 Jul, leg. J A Newbould (J A Newbould, C Marsh).
- 70.030 *Cyclophora pendularia* (Clerck, 1759) **DINGY MOCHA** RDB3
Recorded in: ST71; SU00; SU10; SY78; SY88; SY89; SY98; SY99; SZ08; SZ09. Lytchett Bay, Lytchett Way (SY9792); 16 Jul; 29 Jul (N J Hull). Moors Valley Country Park (SU1006); 2 on 26 Jul, leg. P Budd (R P Harley). Moreton Plantation (SY8190); field, 2 larval on 24 Aug (M S Parsons). Oakers Wood (SY8091); 30 Jul (D Foot). ST71/7310 Rooksmoor (ST7310); field, 2 larval on 26 Aug (M S Parsons). ST71/7410 Deadmoor Common (ST7410); field, larval on 26 Aug (M S Parsons). ST71/7411 Rooksmoor (ST7411); field, larval on 26 Aug (M S Parsons). ST71/7511 Deadmoor Common (ST7511); field, 2 larval on 26 Aug; field, 6 larval on 26 Aug; field, 4 larval on 26 Aug (M S Parsons). SU00/0502 Holt Heath (SU0502); field, larval on 30 Aug (M S Parsons). SU00/0503 Holt Heath (SU0503); field, larval on 30 Aug (M S Parsons). SU00/0503 White Sheet Plantation (SU0503); field, larval on 30 Aug (M S Parsons). SU10/1001 Hurn Forest (SU1001); field, larval on 30 Aug (M S Parsons). SY88/8086 Winfrith Heath (SY8086); field, 2 larval on 22 Aug; field, larval on 22 Aug (M S Parsons). SY88/8087 Winfrith Heath (SY8087); field,

- 2 larval on 22 Aug (M S Parsons). SY89/8092 Affpuddle Heath (SY8092); field, larval on 24 Aug (M S Parsons). SY89/8193 Briantspuddle (SY8193); 18 Aug (J D McMillan). SY89/8291 Throop Heath (SY8291); field, 14 Jul (J Knowler). SY98/9089 Cold Harbour (SY9089); field, larval on 24 Aug (M S Parsons). SZ08/0383 Studland (SZ0383); 24 Aug (D C G Brown). Tadnoll (SY7987); field, larval on 24 Aug (M S Parsons). Throop Heath (SY8192); field, 3 larval on 24 Aug (M S Parsons). Throop Heath (SY8291); field, 2 larval on 24 Aug; field, 3 larval on 24 Aug (M S Parsons). Uddens Plantation (SU0602); field, larval on 30 Aug (M S Parsons). Wareham Forest (SY8892); field, larval on 24 Aug (M S Parsons). West Moors Plantation (SU0903); field, larval on 30 Aug (M S Parsons).
- 70.031 *Cyclophora annularia* (Fabricius, 1775) **MOCHA** Nb
Recorded in: ST60; ST61; ST71; ST90; SU00; SY39; SY68; SY79; SY97; SY98. Langton Westwood (SY9979); 3 on 25 Jul, leg. J Seawright; 4 on 25 Jul, leg. J Seawright (J Seawright, V Giavarini, D E Brown). ST60/6108 Leigh, Wesley House (ST6108); 01 Jun; 07 Jun; 22 Jul; 4 on 24 Jul; 2 on 30 Jul; 07 Aug; 22 Aug; 25 Aug (G A Nash). ST61/6013 Thornford (ST6013); 27 May; 3 on 07 Aug (N J Howell). ST61/6610 Ryewater Farm (ST6610); 02 Jun (W T Franklin). ST90/9602 Badbury Rings (ST9602); 17 Aug; 2 on 07 Sep (J Seawright). Stalbridge Park Wood (ST7218); 2 on 10 Aug, leg. G A Nash (L de Whalley). SU00/0609 Hedgerow (SU0609); 06 Aug; 24 Aug (M Lowe). SY68/MT 0006 Weymouth (SY6682); 25 Aug (P Harris). SY98/9289 Sandford (SY9289); 27 Aug (G Lester). Talbot's Wood (SY9979); 31 Aug, leg. V Giavarini (V Giavarini, M Brown). Whitchurch Canonicorum (SY3995); field, 05 Aug; field, 09 Aug; field, 13 Aug; field, 15 Aug (M Fowlie). Yetminster, Shearstones (ST6010); 18 Aug; 19 Aug; 2 on 25 Aug; 04 Sep (C R Burningham).
- 70.033 *Cyclophora pupillaria* (Hübner, [1799]) **BLAIR'S MOCHA** Migrant
Recorded in: SY49; SY67; SY68; SY78; SZ07; SZ08. Broadmayne, Spring Gardens (SY7387); 07 Sep (P Bruce-Jones). SY49/MT 0002 Bothenhampton (SY4892); 07 Sep; 2 on 08 Oct; 28 Oct; 30 Oct (M S Parsons). SY67/xxxx Chickerell (SY67); 26 Oct (M Cade). SY68/MT 0001 Dorchester (SY6889); 29 Oct (J E Down). SZ07/0377 Durlston Country Park (SZ0377); male on 21 Sep (J Clarke). SZ08/0280 Durlston Country Park (SZ0280); 24 Sep (D C G Brown). SZ08/0383 Studland (SZ0383); 2 on 24 Aug; 25 Aug; 26 Aug (D C G Brown).
- 70.034 *Cyclophora ruficiliaria* (Herrich-Schäffer, 1855) **JERSEY MOCHA** Channel Islands only
Recorded in: SY66; SY67. SY66/MT 0001 Portland (SY6868); 11 Sep (M Cade). SY67/xxxx Chickerell (SY67); 25 Aug (M Cade).
- 70.043 *Scotopteryx bipunctaria* ([Denis & Schiffermüller], 1775) **CHALK CARPET** Nb
Recorded in: SY39; SY48; SY66; SY67; SY68; SY87. King Barrow Quarry (SY6972); field, 14 Jul (M S Parsons). SY39/MT 0001 Charmouth (SY3693); 05 Aug (G Sell). SY66/6869 Portland (SY6869); field, 3 on 11 Jul (J Knowler). SY67/6870 Isle of Portland (SY6870); 15 Jul (D Saunders). SY68/6085 Portesham (SY6085); 05 Sep (J Oughton). SY87/8279 West Lulworth (SY8279); field, 2 on 27 Jul (G M Tordoff). Tout quarry sculpture park (SY6872); field, 27 Jul (S Butler). UKBMS, Binbarrow - S2 (SY4988); field, 14 Jul, leg. Unknown; field, 19 Jul; field, 25 Jul; field, 2 on 04 Aug; field, 09 Aug; field, 3 on 15 Aug (T Breton).
- 70.052 *Xanthorhoe ferrugata* (Clerck, 1759) **DARK-BARRED TWIN-SPOT CARPET**
Recorded in: SU00; SY68; SZ09. SU00/0609 Hedgerow (SU0609); 27 May (M Lowe). SY68/6085 Portesham (SY6085); 23 Aug (J Oughton).
- 70.057 *Catarhoe rubidata* ([Denis & Schiffermüller], 1775) **RUDDY CARPET** Nb
Recorded in: SY66; SY68. SY66/MT 0001 Portland (SY6868); 19 Jul (M Cade). SY68/MT 0006 Weymouth (SY6682); 17 Jul (P Harris).
- 70.062 *Epirrhoe rivata* (Hübner, [1813]) **WOOD CARPET** Local
Recorded in: ST90; SY39; SY66; SY79. ST90/9602 Badbury Rings (ST9602); 07 Sep (J Seawright). SY39/MT 0001 Charmouth (SY3693); 10 Jun (G Sell). SY66/MT 0001 Portland (SY6868); 16 Jul (M Cade).
- 70.063 *Epirrhoe galiata* ([Denis & Schiffermüller], 1775) **GALIUM CARPET** Local
Recorded in: ST40; SY39; SY66; SY67; SY68; SY88; SZ08. Beaminster, Horn Hill View (ST4701); 19 Jul (S Philp). Southwell East (SY6770); field, 19 Jun (J Oughton). SY39/MT 0001 Charmouth (SY3693); 25 Aug (G Sell). SY66/MT 0001 Portland (SY6868); 28 May (M Cade). SY67/6870 Isle of Portland (SY6870); 28 Aug; 12 Sep; 15 Sep (D Saunders). SY67/6970 Isle of Portland (SY6970); 6 on 11 Jul; 2 on 13 Jul (J Knowler). SY67/MT 0005 Portland (SY6871); 17 Aug (J Williamson). SY68/6085 Portesham (SY6085); 15 Jun; 17 Aug; 30 Aug (J Oughton). SY68/MT 0006 Weymouth (SY6682); 20 Sep (P Harris). SY88/8280 West Lulworth (SY8280); 12 Sep (J Vickers). SZ08/0280 Durlston Country Park (SZ0280); 3 on 05 Sep; 22 Sep (D C G Brown). SZ08/0383 Studland (SZ0383); 24 Aug; 02 Sep (D C G Brown).
- 70.064 *Euphyia biangulata* (Haworth, 1809) **CLOAKED CARPET** Nb
Recorded in: ST40; SY59; SY68; SY79; SY88. Beaminster, Horn Hill View (ST4701); 13 Jun (S Philp). SY59/5599

- Kingcombe Meadows (SY5599); 11 Jul (D C G Brown). SY68/MT 0006 Weymouth (SY6682); 15 Aug (P Harris). SY79/MT 0002 Tolpuddle (SY7994); 27 Jul (J Francis). SY88/MT 0001 East Lulworth (SY8583); 25 Jul, leg. M S Parsons; 26 Jul, leg. M S Parsons (M S Parsons, R Jones).
- 70.068 *Mesoleuca albicillata* (Linnaeus, 1758) **BEAUTIFUL CARPET**
Recorded in: ST40; SY88; SY89. Beaminstor, Horn Hill View (ST4701); 19 Jul (S Philp). SY88/MT 0001 East Lulworth (SY8583); 19 Jul, leg. R Jones (R Jones, S Phelps, M S Warren). SY89/8193 Briantspuddle (SY8193); 26 Jul; 14 Aug (J D McMillan).
- 70.069 *Pelurga comitata* (Linnaeus, 1758) **DARK SPINACH**
Recorded in: SY66; SZ09. SY66/MT 0001 Portland (SY6868); 19 Jul (M Cade).
- 70.070 *Larentia clavaria* (Haworth, 1809) **MALLOW**
Recorded in: ST61; SY67; SZ09. SY67/6870 Isle of Portland (SY6870); 24 Oct; 25 Oct (D Saunders). SY67/MT 0005 Portland (SY6871); 25 Oct (J Williamson). Yetminster, Shearstones (ST6010); 04 Oct (C R Burningham).
- 70.076 *Hydriomena ruberata* (Freyer, [1831]) **RUDDY HIGHFLYER** Local
Recorded in: SZ08. SZ08/0383 Studland (SZ0383); 2 on 08 May (D C G Brown).
- 70.080 *Thera vetustata* ([Denis & Schiffermüller], 1775) **FIR CARPET** Migrant
Recorded in: SY68. SY68/6982 Preston, Ringstead Crescent (SY6982); 19 Jul ('Ricky' Lambert).
- 70.092 *Eulithis mellinata* (Fabricius, 1787) **SPINACH**
Recorded in: ST80; SZ09. ST80/MT 0001 Winterborne Stickland (ST8305); 2 on 16 Jul; 17 Jul (L de Whalley).
- 70.099 *Colostygia olivata* ([Denis & Schiffermüller], 1775) **BEECH-GREEN CARPET** Local
Recorded in: SY67. West Grove Terrace (SY6972); 27 Jul (M Cade).
- 70.104 *Lampropteryx otregiata* (Metcalf, 1917) **DEVON CARPET** Nb
Recorded in: SY88; SY89. Oakers Wood (SY8091); 30 Jul (D Foot). SY88/MT 0001 East Lulworth (SY8583); 09 May (M S Parsons).
- 70.113 *Hydrelia sylvata* ([Denis & Schiffermüller], 1775) **WAVED CARPET** Nb
Recorded in: SY68. SY68/MT 0006 Weymouth (SY6682); 16 Jul (P Harris).
- 70.117 *Minoa murinata* (Scopoli, 1763) **DRAB LOOPER** Nb
Recorded in: ST91; SU01. Garston Wood (SU0019); field, 26 May (M S Parsons). ST91/9015 Stubhampton Bottom (ST9015); field, 24 May (M S Parsons).
- 70.124 *Pareulype berberata* ([Denis & Schiffermüller], 1775) **BARBERRY CARPET** RDB1
Recorded in: ST80; SY39. Coachouse Haye Lane Lyme Regis (SY3392); 23 Jul (R Baylis). Field, 9 (min) larval on 01 Sep (M S Parsons).
- 70.129 *Anticollix sparsata* (Treitschke, 1828) **DENTATED PUG** Na
Recorded in: SU00; SZ09. SU00/0502 Holt Heath (SU0502); field, 2 larval on 30 Aug (M S Parsons).
- 70.130 *Odezia atrata* (Linnaeus, 1758) **CHIMNEY SWEEPER**
Recorded in: SU01; SY98. SY98/9581 Corfe Common (SY9581); field, 3 on 08 Jun (R Hughes). UKBMS, 1019. 3 (SU0418); field, 05 Jul (L Smith). UKBMS, Corfe Common - S4 (SY9581); field, 08 Jun; field, 4 on 24 Jun; field, 2 on 02 Jul (R Hughes).
- 70.131 *Mesotype didymata* (Linnaeus, 1758) **TWIN-SPOT CARPET**
Recorded in: ST70. Higher Ansty (ST7603); 28 Jul (M S Warren).
- 70.134 *Perizoma bifaciata* (Haworth, 1809) **BARRED RIVULET** Local
Recorded in: SY66. SY66/MT 0001 Portland (SY6868); 21 Jul (M Cade).
- 70.137 *Perizoma albulata* ([Denis & Schiffermüller], 1775) **GRASS RIVULET** Local
Recorded in: SY39; SZ07; SZ09. SZ07/MT 0002 Swanage (SZ0278); 2 on 04 Jun; 4 on 10 Jun (P England). SZ09/MT 0012 Poole (SZ0095); 08 Jul (A H Bicker). Westhay Farm Field 14 (SY3892); 30 Jun (J A Newbould).

- 70.150 *Eupithecia linariata* ([Denis & Schiffermüller], 1775) **TOADFLAX PUG**
Recorded in: ST60; SY67; SY68; SZ07; SZ08; SZ09. ST60/6108 Leigh, Wesley House (ST6108); 07 Jul (G A Nash). SY67/6870 Isle of Portland (SY6870); 07 Jul; 24 Aug (D Saunders). SY68/6085 Portesham (SY6085); 05 Sep (J Oughton). SZ07/MT 0002 Swanage (SZ0278); 21 Jul (P England). SZ08/0582 Handfast Point (SZ0582); field, larval on 01 Nov (J Seawright).
- 70.152 *Eupithecia ultimaria* Boisduval, 1840 **CHANNEL ISLANDS PUG** Local(alien-foodplant)
Recorded in: SY67; SY68. SY67/6870 Isle of Portland (SY6870); 25 Aug (D Saunders). SY68/MT 0002 Chickerell (SY6580); 11 Jun (C Pinder). SY68/MT 0006 Weymouth (SY6682); 25 Aug (P Harris).
- 70.166 *Eupithecia simpliciata* (Haworth, 1809) **PLAIN PUG** Local
Recorded in: SY67; SY68; SZ09. SY67/6676 Weymouth (SY6676); 22 Jul; 05 Aug (D Foot). SY68/MT 0002 Chickerell (SY6580); 09 Jun; 09 Jul; 27 Jul; 29 Jul; 30 Jul (C Pinder). SY68/MT 0006 Weymouth (SY6682); 22 Jul (P Harris).
- 70.169 *Eupithecia innotata* (Hufnagel, 1767) **ANGLE-BARRED PUG** Unconfirmed
Recorded in: SY67; SY79. SY67/6676 Weymouth (SY6676); 25 Aug (D Foot).
- 70.172 *Eupithecia distinctaria* Herrich-Schäffer, 1848 **THYME PUG** Nb
Recorded in: SY66. SY66/MT 0001 Portland (SY6868); 22 Jun (M Cade).
- 70.181 *Eupithecia valerianata* (Hübner, [1813]) **VALERIAN PUG** Nb
Recorded in: SY67. SY67/6870 Isle of Portland (SY6870); 25 May; 3 on 30 May; 02 Jun; 2 on 04 Jun; 06 Jun; 2 on 07 Jun; 3 on 08 Jun; 15 Jun (S Foote).
- 70.195 *Chesias legatella* ([Denis & Schiffermüller], 1775) **STREAK**
Recorded in: SY88. SY88/8986 East Holme (SY8986); 28 Oct (J H S Cox).
- 70.206 *Abraxas sylvata* (Scopoli, 1763) **CLOUDED MAGPIE** Local
Recorded in: ST80; SY68; SY97. ST80/MT 0001 Winterborne Stickland (ST8305); 16 Jul (L de Whalley). SY68/MT 0006 Weymouth (SY6682); 29 Jul (P Harris). Worth Matravers (SY9777); 27 Aug (M Bellingham).
- 70.211 *Macaria notata* (Linnaeus, 1758) **PEACOCK MOTH** Local
Recorded in: SZ09. SZ09/MT 0012 Poole (SZ0095); 28 Aug (A H Bicker).
- 70.218 *Chiasmia clathrata* (Linnaeus, 1758) **LATTICED HEATH**
Recorded in: SY49; SY66. Hardown Hill (SY4094); field, 28 May (J Campbell). SY66/MT 0001 Portland (SY6868); 12 Sep (M Cade).
- 70.221 *Cepphis advenaria* (Hübner, 1790) **LITTLE THORN** Nb
Recorded in: SU00; SY78; SY89; SY99; SZ09. Broadmayne, Spring Gardens (SY7387); 09 Jun; 11 Jun (P Bruce-Jones). St Leonards (SZ0594); 16 Jun (S Dutton). SU00/0609 Hedgerow (SU0609); 27 May (M Lowe). SY89/8193 Briantspuddle (SY8193); 11 May; 04 Jun; 10 Jun (J D McMillan). SY99/9794 Corfe Mullen (SY9794); 11 May (A Fale).
- 70.230 *Angerona prunaria* (Linnaeus, 1758) **ORANGE MOTH** Local
Recorded in: ST60. ST60/6108 Leigh, Wesley House (ST6108); 27 Jun (G A Nash).
- 70.233 *Ennomos quercinaria* (Hufnagel, 1767) **AUGUST THORN** Local
Recorded in: ST40; ST70; SZ09. Beaminster, Horn Hill View (ST4701); 12 Aug (S Philp). Higher Ansty (ST7603); 11 Aug (M S Warren). St Leonards (SZ0594); 3 on 30 Jul (S Dutton).
- 70.236 *Ennomos erosaria* ([Denis & Schiffermüller], 1775) **SEPTEMBER THORN**
Recorded in: ST61; SU00; SU10; SY79; SY89; SZ08; SZ09. Merley, Sopwith Crescent (SZ0298); 18 Aug (R W Steedman). Moors Valley Country Park (SU1006); 26 Jul (P Budd). Oakers Wood (SY8091); 30 Jul (D Foot). SU00/0609 Hedgerow (SU0609); 3 on 15 Jul; 9 on 29 Jul; 3 on 06 Aug; 2 on 24 Aug; 2 on 05 Sep; 08 Sep; 15 Sep (M Lowe). SY79/MT 0002 Tolpuddle (SY7994); 26 Aug (J Francis). SZ08/0383 Studland (SZ0383); 2 on 24 Aug; 28 Aug (D C G Brown). Whitehill (SY7593); 28 Aug (R M Porter). Yetminster, Shearstones (ST6010); 25 Jul; 14 Aug; 16 Aug; 19 Aug; 2 on 25 Aug; 28 Aug (C R Burningham).
- 70.262 *Selidosema brunnearia* (Villers, 1789) **BORDERED GREY** Na
Recorded in: SY88. SY88/8280 West Lulworth (SY8280); field, 4 on 17 Aug (L de Whalley).

- 70.263 *Cleora cinctaria* ([Denis & Schiffermüller], 1775) **RINGED CARPET** Na
Recorded in: SZ09. Merley, Sopwith Crescent (SZ0298); 10 May; 16 Jul; 23 Jul (R W Steedman).
- 70.287 *Charissa obscurata* ([Denis & Schiffermüller], 1775) **ANNULET** Local
Recorded in: SY98; SY99. Furzebrook Road, Stoborough Heath (SY9384); 2 on 24 Jul (J Clarke). SY99/9894 Upton Heath (SY9894); 03 Aug (M Lowe).
- 70.292 *Dyscia fagaria* (Thunberg, 1784) **GREY SCALLOPED BAR** Local
Recorded in: SY98. SY98/9289 Sandford (SY9289); 23 Jul (G Lester).
- 70.306 *Chlorissa viridata* (Linnaeus, 1758) **SMALL GRASS EMERALD** Na
Recorded in: SU00; SY88. SU00/0604 Holt Heath (SU0604); field, larval on 17 Aug (M S Parsons). SY88/8087 Winfrith Heath (SY8087); netted, 3 on 05 Jun (D Foot).
- 71.006 *Furcula bicuspis* (Borkhausen, 1790) **ALDER KITTEN** Local
Recorded in: ST40; SY49. ST40/MT 0002 Beaminster (ST4801); 04 Jun, leg. M Raper (M Raper, D Raper). SY49/MT 0002 Bothenhampton (SY4892); 01 Jun; 03 Jun (M S Parsons).
- 72.006 *Hypena obsitalis* (Hübner, [1813]) **BLOXWORTH SNOUT** RDB3
Recorded in: SY67; SY68; SY79; SZ07. SY67/6970 Freshwater Bay, Portland (SY6970); field, 3 on 14 Jul (M S Parsons). SY68/MT 0002 Chickerell (SY6580); 25 Jul; 11 Aug (C Pinder). SZ07/0377 Durlston Country Park (SZ0377); 08 Dec (S Nash).
- 72.007 *Hypena crassalis* (Fabricius, 1787) **BEAUTIFUL SNOUT** Local
Recorded in: ST40; SY39; SY79; SY89; SY99. Corfe Hills, Broadstone (SY9996); 19 Jul (J Seawright). Oakers Wood (SY8091); 30 Jul (D Foot). ST40/MT 0002 Beaminster (ST4801); 4 on 27 Aug, leg. M Raper (M Raper, D Raper). SY39/MT 0001 Charmouth (SY3693); 22 Jun (G Sell). SY79/MT 0002 Tolpuddle (SY7994); 28 Jul (J Francis).
- 72.009 *Leucoma salicis* (Linnaeus, 1758) **WHITE SATIN** Local
Recorded in: SU00; SY58; SY67; SY68; SY79; SY89; SZ09. SU00/0609 Hedgerow (SU0609); 20 Jul (M Lowe). SY58/5388 Puncknowle (SY5388); 16 Jul (M Hetherington). SY67/6870 Isle of Portland (SY6870); 17 Jul (D Saunders). SY67/6970 Isle of Portland (SY6970); 2 on 11 Jul; 13 Jul (J Knowler). SY68/MT 0006 Weymouth (SY6682); 11 Jul (P Harris). SY79/MT 0002 Tolpuddle (SY7994); 22 Jun (J Francis). SY89/8193 Briantspuddle (SY8193); 07 Jul (J D McMillan). West Grove Terrace (SY6972); 19 Jul (M Cade).
- 72.011 *Lymantria dispar* (Linnaeus, 1758) **GYPSY MOTH** Vagrant/Accidental
Recorded in: SY39. SY39/MT 0001 Charmouth (SY3693); 17 Aug (G Sell).
- 72.016 *Dicallomera fascelina* (Linnaeus, 1758) **DARK TUSSOCK** Local
Recorded in: SZ08. SZ08/0183 Studland, Godlingston Heath (SZ0183); 11 Jul, leg. J Seawright (D E Brown, M Brown, J Seawright).
- 72.025 *Parasemia plantaginis* (Linnaeus, 1758) **WOOD TIGER** Local
Recorded in: ST60; ST81. ST60/6000 Lankham Bottom (ST6000); field, 3 on 02 Jun; field, 03 Jun; field, 27 Jun; field, 26 May (J Davis). ST60/6100 Lankham Bottom (ST6100); field, 3 on 16 Jun; field, 2 on 02 Jun; field, 3 on 02 Jun; field, 3 on 03 Jun (M S Parsons). ST60/6601 Cerne Abbas (ST6601); field, 27 Jun (M S Parsons). ST81/8818 Clubmen's Down (ST8818); field, 11 Jun (C Argles).
- 72.047 *Eilema caniola* (Hübner, [1808]) **HOARY FOOTMAN** Nb
Recorded in: SY39. SY39/MT 0001 Charmouth (SY3693); 20 Jul (G Sell).
- 72.051 *Paracolax tristalis* (Fabricius, 1794) **CLAY FAN-FOOT** Na
Recorded in: SZ08. SZ08/0288 Brownsea Island (SZ0288); 23 Jul, leg. C Thain (C Thain, A Gibbs).
- 72.060 *Hypenodes humidalis* Doubleday, 1850 **MARSH OBLIQUE-BARRED** Nb
Recorded in: SY89; SY98; SZ09. Oakers Wood (SY8091); 4 on 30 Jul (D Foot). SY98/9585 Slepe Heath (SY9585); 18 Jul, leg. M S Parsons (M S Parsons, D E Brown).
- 72.062 *Schrankia taenialis* (Hübner, [1809]) **WHITE-LINE SNOUT** Nb
Recorded in: SY89. Oakers Wood (SY8091); 30 Jul (D Foot).

- 72.072 *Eublemma ostrina* (Hübner, [1808]) **PURPLE MARBLED** Migrant
Recorded in: SY79. SY79/7593 Puddletown, Whitehill (SY7593); 31 Jan, leg. L J Hill (R M Porter).
- 72.073 *Eublemma parva* (Hübner, [1808]) **SMALL MARBLED** Migrant
Recorded in: SY39. SY39/MT 0001 Charmouth (SY3693); 25 Jul (G Sell).
- 72.074 *Eublemma purpurina* ([Denis & Schiffermüller], 1775) **BEAUTIFUL MARBLED** Migrant
Recorded in: SY89. SY89/8193 Briantspuddle (SY8193); 26 Aug (J D McMillan).
- 72.076 *Catocala fraxini* (Linnaeus, 1758) **CLIFDEN NONPAREIL** Migrant
Recorded in: SU11; SY49; SY58; SY78; SY79; SZ08. Alderholt (SU1112); field, 09 Oct (N Urch). Broadmayne, Spring Gardens (SY7387); 03 Oct (P Bruce-Jones). Hardown Hill (SY4094); 22 Sep (A J Brown). SY49/MT 0002 Bothenhampton (SY4892); 07 Oct (M S Parsons). SY58/5387 West Bexington (SY5387); 08 Oct (D Foot). SY79/MT 0002 Tolpuddle (SY7994); 07 Sep (J Francis). SZ08/0383 Studland (SZ0383); 24 Sep (D C G Brown).
- 72.082 *Catocala promissa* ([Denis & Schiffermüller], 1775) **LIGHT CRIMSON UNDERWING** RDB3
Recorded in: SY98. Furzebrook Road, Stoborough Heath (SY9384); 24 Jul (J Clarke).
- 73.005 *Ctenoplusia limbirena* (Guenée, 1852) **SCAR BANK GEM** Rare migrant
Recorded in: SY66. SY66/MT 0001 Portland (SY6868); 25 Oct (M Cade).
- 73.008 *Chrysodeixis chalcites* (Esper, [1803]) **GOLDEN TWIN-SPOT** Migrant
Recorded in: SY68. SY68/MT 0007 Weymouth (SY6982); 16 Sep ('Ricky' Lambert).
- 73.010 *Macdunnoughia confusa* (Stephens, 1850) **DEWICK'S PLUSIA** Rare migrant
Recorded in: SY49; SY79. SY49/MT 0002 Bothenhampton (SY4892); 27 Sep (M S Parsons). SY79/MT 0002 Tolpuddle (SY7994); 14 Aug (J Francis).
- 73.031 *Tyta luctuosa* ([Denis & Schiffermüller], 1775) **FOUR-SPOTTED** Na
Recorded in: SY66; SY67. SY66/MT 0001 Portland (SY6868); 01 Jun (M Cade). SY67/6870 Isle of Portland (SY6870); 15 Jul (D Saunders).
- 73.033 *Diloba caeruleocephala* (Linnaeus, 1758) **FIGURE OF EIGHT**
Recorded in: ST60; ST61. ST60/6108 Leigh, Wesley House (ST6108); 26 Oct; 31 Oct (G A Nash). ST61/6610 Ryewater Farm (ST6610); 2 on 31 Oct (W T Franklin).
- 73.038 *Acronicta psi* (Linnaeus, 1758) **GREY DAGGER**
Recorded in: SY58; SY78; SY89; SY99. Corfe Hills, Broadstone (SY9996); 30 Jul, gen. det. (J Seawright). Moreton Plantation (SY8190); field, larval on 24 Aug (M S Parsons). Sutton Poyntz (SY7083); field, larval on 25 Sep, leg. C Marsh (C Marsh, R Oxtoby). SY58/5685 Abbotsbury Gardens (SY5685); field, larval on 11 Sep (J Oughton).
- 73.050 *Cucullia absinthii* (Linnaeus, 1761) **WORMWOOD** Nb
Recorded in: SY66; SY67. SY66/MT 0001 Portland (SY6868); 21 Jul (M Cade). SY67/6870 Isle of Portland (SY6870); 17 Jul; 23 Jul; 14 Aug (D Saunders).
- 73.053 *Cucullia chamomillae* ([Denis & Schiffermüller], 1775) **CHAMOMILE SHARK** Local
Recorded in: SY66. SY66/MT 0001 Portland (SY6868); 06 May (M Cade).
- 73.061 *Stilbia anomala* (Haworth, 1812) **ANOMALOUS** Local
Recorded in: SY89; SY98; SZ09. Stoborough - Stoborough Heath (SY9384); 2 on 17 Sep; 3 on 19 Sep (M Lovell). SY89/8193 Briantspuddle (SY8193); 28 Aug (J D McMillan).
- 73.064 *Amphipyra tragopoginis* (Clerck, 1759) **MOUSE MOTH**
Recorded in: ST90; SY39; SY66; SY68; SY78; SY79; SY88; SY89; SZ08; SZ09. Broadmayne, Spring Gardens (SY7387); 11 Aug (P Bruce-Jones). Merley, Sopwith Crescent (SZ0298); 06 Jul (R W Steedman). ST90/9602 Badbury Rings (ST9602); 17 Aug; 2 on 17 Aug (J Seawright). Stonebarrow base camp (SY3893); 24 Aug, leg. J A Newbould (J A Newbould, G Baron). Sutton Poyntz (SY7083); 23 Aug (C Marsh, R Oxtoby). SY66/MT 0001 Portland (SY6868); 25 Jul (M Cade). SY68/MT 0001 Dorchester (SY6889); 18 Aug; 24 Aug (J E Down). SY78/7083 Weymouth (SY7083); 26 Aug (J Campbell). SY79/MT 0002 Tolpuddle (SY7994); 14 Aug; 23 Aug (J Francis). SY88/8986 East Holme (SY8986); 28 Aug (J H S Cox). SY88/MT 0001 East Lulworth (SY8583); 04 Oct (M S Parsons). SY89/8193 Briantspuddle

- (SY8193); 17 Aug; 18 Aug; 24 Aug; 2 on 26 Aug; 2 on 27 Aug; 28 Aug (J D McMillan). SZ08/0383 Studland (SZ0383); 24 Aug; 2 on 25 Aug (D C G Brown).
- 73.065 *Asteroscopus sphinx* (Hufnagel, 1766) **SPRAWLER**
Recorded in: ST60; ST61. ST60/6108 Leigh, Wesley House (ST6108); 31 Oct (G A Nash). ST61/6610 Ryewater Farm (ST6610); 2 on 31 Oct; 8 on 14 Nov (W T Franklin). Yetminster, Shearstones (ST6010); 18 Oct (C R Burningham).
- 73.070 *Pyrrhia umbra* (Hufnagel, 1766) **BORDERED SALLOW** Local
Recorded in: ST40; SY39; SY66; SY79. Dorset (SY3693); 10 Jun (G Sell). ST40/MT 0002 Beaminster (ST4801); 04 Jul, leg. M Raper (M Raper, D Raper). SY39/MT 0001 Charmouth (SY3693); 06 Jun; 10 Jun; 14 Jun; 02 Jul; 07 Jul (G Sell). SY66/MT 0001 Portland (SY6868); 15 Jun (M Cade).
- 73.074 *Heliothis peltigera* ([Denis & Schiffermüller], 1775) **BORDERED STRAW** Migrant
Recorded in: ST40; SY39; SZ07; SZ08. Beaminster, Horn Hill View (ST4701); 2 on 19 Jul (S Philp). SY39/MT 0001 Charmouth (SY3693); 29 Jun; 03 Jul (G Sell). SZ07/MT 0002 Swanage (SZ0278); 15 Jul (P England). SZ08/0280 Durlston Country Park (SZ0280); 05 Sep (D C G Brown).
- 73.080 *Callopietria juvenina* (Stoll, 1782) **LATIN** Vagrant/Accidental
Recorded in: SY67. SY67/6676 Weymouth (SY6676); 19 Jul (D Foot).
- 73.082 *Cryphia algae* (Fabricius, 1775) **TREE-LICHEN BEAUTY** Rare migrant
Recorded in: SY88. SY88/MT 0001 East Lulworth (SY8583); 26 Jul, leg. M S Parsons (M S Parsons, R Jones).
- 73.087 *Spodoptera exigua* (Hübner, [1808]) **SMALL MOTTLED WILLOW** Migrant
Recorded in: ST40; SY66; SY67; SY68; SY79; SY89; SZ07; SZ08; SZ09. ST40/MT 0002 Beaminster (ST4801); 10 May, leg. M Raper (M Raper, D Raper). SY66/MT 0001 Portland (SY6868); 2 on 22 Jun (M Cade). SY67/6870 Isle of Portland (SY6870); 04 Jul; 23 Aug (D Saunders). SY68/6085 Portesham (SY6085); 04 Sep; 05 Sep (J Oughton). SY79/MT 0002 Tolpuddle (SY7994); 22 Jun; 21 Aug (J Francis). SY89/8193 Briantspuddle (SY8193); 26 Jun (J D McMillan). SZ07/MT 0002 Swanage (SZ0278); 2 on 08 Jul (P England). SZ08/0280 Durlston Country Park (SZ0280); 05 Sep (D C G Brown). SZ08/0383 Studland (SZ0383); 24 Aug (D C G Brown). Whitehill (SY7593); 31 Jan (R M Porter).
- 73.093 *Caradrina kadenii* (Freyer, [1836]) **CLANCY'S RUSTIC** Migrant
Recorded in: SY39; SY58; SY66; SY67; SY68; SY79; SZ09. SY39/MT 0001 Charmouth (SY3693); 28 Oct; 2 on 29 Oct (G Sell). SY58/5387 West Bexington (SY5387); 2 on 04 Oct; 21 Oct (D Foot). SY66/MT 0001 Portland (SY6868); 19 Oct (M Cade). SY67/6870 Isle of Portland (SY6870); 20 Oct; 3 on 21 Oct (D Saunders). SY68/MT 0006 Weymouth (SY6682); 27 Sep; 28 Oct (P Harris). SZ09/MT 0012 Poole (SZ0095); 13 Sep (A H Bicker).
- 73.100 *Chilodes maritima* (Tauscher, 1806) **SILKY WAINSCOT** Local
Recorded in: SY98; SY99; SZ09. Furzebrook Road, Stoborough Heath (SY9384); 24 Jul (J Clarke). Lytchett Bay, Lytchett Way (SY9792); 2 on 04 Jun; 06 Jul; 2 on 29 Jul (N J Hull).
- 73.104 *Athetis hospes* (Freyer, [1831]) **PORTER'S RUSTIC** Vagrant/Accidental
Recorded in: SY79; SZ08. SZ08/0383 Studland (SZ0383); male on 24 Aug (D C G Brown).
- 73.119 *Helotropha leucostigma* (Hübner, [1808]) **CRESCENT** Local
Recorded in: SY67; SY68; SZ09. SY67/6676 Weymouth (SY6676); 26 Aug (D Foot). SY68/MT 0006 Weymouth (SY6682); 04 Aug (P Harris).
- 73.128 *Amphipoea oculea* (Linnaeus, 1761) **EAR MOTH**
Recorded in: SY99. Corfe Hills, Broadstone (SY9996); 2 on 30 Jul, gen. det. (J Seawright).
- 73.137 *Arenostola phragmitidis* (Hübner, [1803]) **FEN WAINSCOT** Local
Recorded in: SY39; SY66; SY67; SY68; SY78; SY99; SZ09. Broadmayne, Spring Gardens (SY7387); 21 Jul (P Bruce-Jones). Lytchett Bay, Lytchett Way (SY9792); 16 Jul; 3 on 29 Jul (N J Hull). SY39/MT 0001 Charmouth (SY3693); 08 Jul; 06 Aug (G Sell). SY66/MT 0001 Portland (SY6868); 21 Jul (M Cade). SY67/6870 Isle of Portland (SY6870); 2 on 19 Jul (D Saunders). SY68/MT 0006 Weymouth (SY6682); 21 Jul (P Harris).
- 73.148 *Photodes morrisii* (Dale, 1837) **MORRIS'S WAINSCOT** RDB 1
Recorded in: SY39. SY39/MT 0001 Charmouth (SY3693); 26 Jun (G Sell).

- 73.151 *Globia sparganii* (Esper, 1789) **WEBB'S WAINSCOT** Nb
Recorded in: SY39; SY79; SY99. Lytchett Bay, Lytchett Way (SY9792); 11 Aug; 01 Sep (N J Hull). SY39/MT 0001 Charmouth (SY3693); 12 Sep (G Sell).
- 73.157 *Apamea anceps* ([Denis & Schiffermüller], 1775) **LARGE NUTMEG** Local
Recorded in: ST61. ST61/6013 Thornford (ST6013); 30 May (N J Howell).
- 73.164 *Apamea sublustris* (Esper, 1788) **REDDISH LIGHT ARCHES** Local
Recorded in: ST71; SY68; SZ07. ST71/7313 Lydlinch Common (ST7313); 25 May; 27 May, leg. L de Whalley (L de Whalley). SY68/6085 Portesham (SY6085); 22 Jun (J Oughton). SZ07/MT 0002 Swanage (SZ0278); 10 Jun; 02 Jul; 08 Jul; 15 Jul (P England).
- 73.169 *Mesapamea secalis* (Linnaeus, 1758) **COMMON RUSTIC**
Recorded in: SY99. Corfe Hills, Broadstone (SY9996); 2 on 30 Jul, gen. det. (J Seawright).
- 73.178 *Leucochlaena oditis* (Hübner, [1822]) **BEAUTIFUL GOTHIC** RDB3
Recorded in: SY66; SY67; SZ07; SZ08. SY66/6868 Isle of Portland (SY6868); field, 2 on 27 Sep (G Hibberd). SY66/6969 Freshwater Bay, Isle of Portland (SY6969); 27 Oct, leg. M J Hammond (M J Hammond, K Tailby). SY67/6870 Isle of Portland (SY6870); 20 Oct; 21 Oct (D Saunders). SY67/MT 0005 Portland (SY6871); 06 Sep; 13 Sep; 2 on 20 Sep; 2 on 23 Sep; 11 Oct (J Williamson). SZ07/0377 Durlston Country Park (SZ0377); 21 Sep (J Clarke). SZ08/0280 Durlston Country Park (SZ0280); 3 on 05 Sep; 22 Sep (D C G Brown). SZ08/0383 Studland (SZ0383); 22 Sep (D C G Brown).
- 73.188 *Agrochola helvola* (Linnaeus, 1758) **FLOUNCED CHESTNUT**
Recorded in: SY49; SZ09. SY49/MT 0002 Bothenhampton (SY4892); 28 Oct; 30 Oct (M S Parsons).
- 73.191 *Agrochola haematidea* (Duponchel, 1827) **SOUTHERN CHESTNUT** RDB2
Recorded in: SY68; SY88; SZ09. SY68/MT 0006 Weymouth (SY6682); 23 Oct (P Harris). SY88/MT 0001 East Lulworth (SY8583); 18 Oct, leg. M S Parsons (M S Parsons, Z Randle).
- 73.196 *Conistra rubiginosa* (Scopoli, 1763) **BLACK-SPOTTED CHESTNUT** Migrant
Recorded in: SY66. SY66/MT 0001 Portland (SY6868); 05 Jan **New VC Record**. (M Cade).
- 73.197 *Conistra rubiginea* ([Denis & Schiffermüller], 1775) **DOTTED CHESTNUT** Nb
Recorded in: ST61; SY78; SY79; SZ09. Broadmayne, Spring Gardens (SY7387); 15 Apr; 18 Apr (P Bruce-Jones). ST61/6013 Thornford (ST6013); 06 May (N J Howell). SZ09/MT 0012 Poole (SZ0095); 21 Apr (A H Bicker). Whitehill (SY7593); 02 Apr (R M Porter).
- 73.200 *Lithophane semibrunnea* (Haworth, 1809) **TAWNY PINION** Local
Recorded in: SY49; SY79; SZ09. SY49/MT 0002 Bothenhampton (SY4892); 14 Apr (M S Parsons).
- 73.213 *Ipimorpha subtusa* ([Denis & Schiffermüller], 1775) **OLIVE** Local
Recorded in: SY66. Culverwell (SY6869); 04 Aug (M Cade).
- 73.223 *Dryobota labecula* (Esper, 1788) **OAK RUSTIC** Rare migrant
Recorded in: ST60; SY66; SY79; SZ07; SZ09. ST60/6108 Leigh, Wesley House (ST6108); 30 Oct (G A Nash). SY66/MT 0001 Portland (SY6868); 02 Nov (M Cade). SZ07/0377 Durlston Country Park (SZ0377); 7 on 08 Dec (S Nash). SZ07/MT 0002 Swanage (SZ0278); 19 Oct; 3 on 31 Oct; 5 on 04 Nov; 11 Nov; 4 on 14 Nov (P England).
- 73.227 *Dryobotodes tenebrosa* (Esper, 1789) **SOMBRE BROCADE** Migrant
Recorded in: SY66; SZ07; SZ08. SY66/MT 0001 Portland (SY6868); 19 Sep (M Cade). SZ07/0377 Durlston Country Park (SZ0377); 4 on 21 Sep (J Clarke). SZ07/MT 0002 Swanage (SZ0278); 19 Sep; 3 on 22 Sep (P England). SZ08/0280 Durlston Country Park (SZ0280); 22 Sep (D C G Brown).
- 73.229 *Trigonophora flammaea* (Esper, 1785) **FLAME BROCADE** Migrant
Recorded in: SY66; SY67. SY66/6969 Freshwater Bay, Isle of Portland (SY6969); 3 on 27 Oct, leg. M J Hammond (M J Hammond, K Tailby). SY66/MT 0001 Portland (SY6868); 19 Oct (M Cade). SY67/6870 Isle of Portland (SY6870); 17 Oct; 19 Oct; 20 Oct; 21 Oct; 22 Oct; 24 Oct; 26 Oct; 30 Oct; 31 Oct; 13 Nov (D Saunders).
- 73.230 *Aporophyla australis* (Boisduval, 1829) **FEATHERED BRINDLE** Nb
Recorded in: SY49; SY58; SY66; SY67; SY68; SZ07; SZ08. SY49/MT 0002 Bothenhampton (SY4892); 13 Sep (M S

- Parsons). SY58/5388 Puncknowle (SY5388); 2 on 28 Sep (M Hetherington). SY66/6868 Isle of Portland (SY6868); field, 4 on 27 Sep (G Hibberd). SY66/6969 Freshwater Bay, Isle of Portland (SY6969); 27 Oct, leg. M J Hammond (M J Hammond, K Tailby). SY66/MT 0001 Portland (SY6868); 11 Sep (M Cade). SY67/6870 Isle of Portland (SY6870); 12 Sep; 14 Sep; 3 on 15 Sep; 2 on 16 Sep; 2 on 17 Sep; 3 on 18 Sep; 9 on 19 Sep; 15 on 20 Sep; 21 Sep; 27 Sep; 21 Oct (S Foote). SY67/MT 0005 Portland (SY6871); 3 on 13 Sep; 22 on 20 Sep; 8 on 23 Sep (J Williamson). SY68/MT 0002 Chickereil (SY6580); 07 Oct; 09 Oct (C Pinder). SY68/MT 0006 Weymouth (SY6682); 20 Sep; 24 Sep (P Harris). SZ07/MT 0002 Swanage (SZ0278); 2 on 03 Sep; 10 Sep; 11 Sep; 17 Sep; 21 on 19 Sep; 7 on 22 Sep; 08 Oct; 10 Oct (P England). SZ08/0280 Durlston Country Park (SZ0280); 22 Sep (D C G Brown).
- 73.231 *Aporophyla lutulenta* ([Denis & Schiffermüller], 1775) **DEEP-BROWN DART**
Recorded in: SU00; SY78; SY88. Broadmayne, Spring Gardens (SY7387); 23 Aug (P Bruce-Jones). SU00/0609 Hedgerow (SU0609); 03 Oct (M Lowe). SY88/MT 0001 East Lulworth (SY8583); 05 Oct (M S Parsons).
- 73.237 *Polymixis flavicincta* ([Denis & Schiffermüller], 1775) **LARGE RANUNCULUS** Local
Recorded in: ST60; ST61; SY49; SY58; SY66; SY67. ST60/6108 Leigh, Wesley House (ST6108); 12 Sep; 15 Sep; 23 Sep (G A Nash). SY49/MT 0002 Bothenhampton (SY4892); 20 Sep (M S Parsons). SY58/5388 Puncknowle (SY5388); 12 Sep; 2 on 14 Sep; 15 Sep; 07 Oct (M Hetherington). SY66/6969 Freshwater Bay, Isle of Portland (SY6969); 27 Oct, leg. M J Hammond (M J Hammond, K Tailby). SY67/6870 Isle of Portland (SY6870); 24 Oct (D Saunders). Yetminster, Shearstones (ST6010); 2 on 19 Sep; 20 Sep; 25 Sep (C R Burningham).
- 73.254 *Cerapteryx graminis* (Linnaeus, 1758) **ANTLER MOTH**
Recorded in: SY98. SY98/9289 Sandford (SY9289); 3 on 27 Jul; 4 on 13 Aug (G Lester).
- 73.255 *Anarta trifolii* (Hufnagel, 1766) **NUTMEG**
Recorded in: ST61; SY66; SY67; SY79; SY99; SZ09. Mandeville Close, Weymouth (SY6577); 24 Jun (I Middlebrook). SY66/MT 0001 Portland (SY6868); 08 May (M Cade). SY67/6676 Weymouth (SY6676); 21 Jul (D Foot). SY79/MT 0002 Tolpuddle (SY7994); 09 Aug (J Francis). SY99/9794 Corfe Mullen (SY9794); 28 Jul (M Lowe). Yetminster, Shearstones (ST6010); 08 Jun (C R Burningham).
- 73.265 *Lacanobia contigua* ([Denis & Schiffermüller], 1775) **BEAUTIFUL BROCADE** Local
Recorded in: SY49; SY78; SY98. SY49/4092 Filcombe Farm (SY4092); 09 Jun (G Baron). SY78/7083 Weymouth (SY7083); 10 Jun; 26 Aug (J A Newbould). Wareham, Westport Road (SY9187); 24 May (J Slingsby).
- 73.266 *Lacanobia suasa* ([Denis & Schiffermüller], 1775) **DOG'S TOOTH** Local
Recorded in: SY66; SY68; SY98; SZ09. SY66/MT 0001 Portland (SY6868); 24 Jul (M Cade). SY68/MT 0006 Weymouth (SY6682); 10 Jun (P Harris). SY98/9288 Church Knowle (SY9288); 03 Aug (R W Adams).
- 73.268 *Lacanobia splendens* (Hübner, [1808]) **SPLENDID BROCADE** Migrant
Recorded in: SY88. SY88/MT 0001 East Lulworth (SY8583); 21 Jul, leg. M S Parsons (M S Parsons, R Jones).
- 73.286 *Hadena perplexa* ([Denis & Schiffermüller], 1775) **TAWNY SHEARS**
Recorded in: SY39; SY49; SY66; SY67; SY68; SY69; SY78. Mandeville Close, Weymouth (SY6577); 01 Jul; 08 Jul (I Middlebrook). Stonebarrow base camp (SY3893); 07 Sep, leg. J A Newbould (J A Newbould, C Marsh). SY49/MT 0002 Bothenhampton (SY4892); 07 May (M S Parsons). SY66/MT 0001 Portland (SY6868); 24 May (M Cade). SY67/6870 Isle of Portland (SY6870); 02 Jun; 17 Jul (S Foote). SY68/MT 0006 Weymouth (SY6682); 09 Jul (P Harris). SY69/MT 0001 Frampton (SY6294); 20 Aug (H C R Wheatcroft). SY78/7083 Weymouth (SY7083); 28 May (J Campbell).
- 73.290 *Mythimna conigera* ([Denis & Schiffermüller], 1775) **BROWN-LINE BRIGHT-EYE**
Recorded in: SY39; SY66; SY67; SY79; SZ09. Merley, Sopwith Crescent (SZ0298); 08 May; 09 Jun; 20 Jun; 21 Jun; 26 Jun; 04 Jul; 08 Jul; 12 Jul (R W Steedman). SY39/MT 0001 Charmouth (SY3693); 09 May (G Sell). SY66/6869 Portland, Culverwell (SY6869); 3 on 12 Jul (J Knowler). SY66/MT 0001 Portland (SY6868); 24 Jun; 4 on 12 Jul; 3 on 13 Jul (M Cade). SY67/6870 Isle of Portland (SY6870); 03 Jul; 10 Jul; 2 on 13 Jul; 16 Jul; 8 on 19 Jul; 2 on 20 Jul; 4 on 21 Jul; 3 on 22 Jul; 23 Jul; 6 on 24 Jul; 25 Jul; 26 Jul; 3 on 27 Jul; 28 Jul; 29 Jul; 3 on 30 Jul; 2 on 31 Jul; 04 Aug; 05 Aug; 3 on 08 Aug; 09 Aug; 3 on 10 Aug; 2 on 13 Aug; 2 on 14 Aug; 17 Aug (D Saunders). SY67/MT 0005 Portland (SY6871); 14 Jul; 30 Jul; 14 Aug (J Williamson). SY79/MT 0002 Tolpuddle (SY7994); 2 on 09 Jun (J Francis).
- 73.295 *Mythimna vitellina* (Hübner, [1808]) **DELICATE** Migrant
Recorded in: ST61; SY58; SY66; SY67; SY78; SY79; SY88; SZ07; SZ09. Broadmayne, Spring Gardens (SY7387); 11 Oct; 28 Oct (P Bruce-Jones). SY58/5387 West Bexington (SY5387); 2 on 03 Oct; 5 on 04 Oct; 4 on 07 Oct; 4 on 08 Oct; 19 Oct (D Foot). SY66/6969 Freshwater Bay, Isle of Portland (SY6969); 3 on 27 Oct, leg. M J Hammond (M J Hammond, K Tailby). SY66/MT 0001 Portland (SY6868); 09 Jun (M Cade). SY67/6870 Isle of Portland (SY6870); 24 Jun; 21 Oct; 01 Nov (D Saunders). SY78/7083 Weymouth (SY7083); 03 Jul (J Campbell). SY88/8986 East Holme (SY8986); 28 Oct (J H S Cox). SY88/MT 0001 East Lulworth (SY8583); 05 Oct (M S Parsons). SZ07/MT 0002

Swanage (SZ0278); 05 Oct (P England). West Grove Terrace (SY6972); 27 Sep (M Cade). Whitehill (SY7593); 01 Jul (R M Porter). Yetminster, Shearstones (ST6010); 27 Sep (C R Burningham).

73.296 *Mythimna unipuncta* (Haworth, 1809) **WHITE-SPECK Migrant**

Recorded in: SY58; SY66; SY67; SY68; SY79; SZ07; SZ09. Mandeville Close, Weymouth (SY6577); 03 Oct (I Middlebrook). Merley, Sopwith Crescent (SZ0298); 24 Jul (R W Steedman). SY58/5387 West Bexington (SY5387); 21 Oct (D Foot). SY58/5388 Puncknowle (SY5388); 08 Dec (M Hetherington). SY66/6969 Freshwater Bay, Isle of Portland (SY6969); 2 on 27 Oct, leg. M J Hammond (M J Hammond, K Tailby). SY66/MT 0001 Portland (SY6868); 06 Sep (M Cade). SY67/6870 Isle of Portland (SY6870); 18 Oct; 3 on 19 Oct; 2 on 20 Oct; 14 Nov; 08 Dec (D Saunders). SY68/MT 0002 Chickerell (SY6580); 09 Dec (C Pinder). SY68/MT 0006 Weymouth (SY6682); 17 Sep; 28 Sep; 14 Oct; 2 on 08 Dec; 2 on 09 Dec (P Harris). SZ07/MT 0002 Swanage (SZ0278); 11 Nov (P England).

73.303 *Leucania putrescens* (Hübner, [1824]) **DEVONSHIRE WAINSCOT Na**

Recorded in: SY66. SY66/MT 0001 Portland (SY6868); 30 Jul; 23 Jun (M Cade).

73.304 *Leucania loreyi* (Duponchel, 1827) **COSMOPOLITAN Migrant**

Recorded in: SY66; SY68. SY68/6085 Portesham (SY6085); 05 Sep (J Oughton).

73.308 *Actebia praecox* (Linnaeus, 1758) **PORTLAND MOTH Nb**

Recorded in: SY66. SY66/MT 0001 Portland (SY6868); 31 Aug (M Cade).

73.314 *Euxoa nigricans* (Linnaeus, 1761) **GARDEN DART**

Recorded in: ST70. Higher Ansty (ST7603); 05 Aug (M S Warren).

73.322 *Agrotis vestigialis* (Hufnagel, 1766) **ARCHER'S DART Local**

Recorded in: SY89; SZ08. Oakers Wood (SY8091); 30 Jul (D Foot). SZ08/0383 Studland (SZ0383); 33 on 06 Sep; 02 Sep (S Curson).

73.323 *Agrotis ripae* (Hübner, [1823]) **SAND DART Nb**

Recorded in: SY39. SY39/MT 0001 Charmouth (SY3693); 19 Jul (G Sell).

73.324 *Agrotis trux* (Hübner, [1824]) **CRESCENT DART Local**

Recorded in: SY66; SY67; SY68; SZ07. SY66/MT 0001 Portland (SY6868); 20 Jun; 2 on 12 Jul; 13 Jul (M Cade). SY67/6676 Weymouth (SY6676); 19 Jul (D Foot). SY67/6870 Isle of Portland (SY6870); 12 Jul; 16 Jul; 21 Jul; 12 Aug (D Saunders). SY67/MT 0005 Portland (SY6871); 14 Jul (J Williamson). SY68/MT 0006 Weymouth (SY6682); 09 Aug; 2 on 12 Aug; 13 Aug (P Harris). SZ07/0377 Durlston Country Park (SZ0377); 15 Jul (J Knowler).

73.330 *Ochropleura leucogaster* (Freyer, [1831]) **RADFORD'S FLAME SHOULDER Vagrant/Accidental**

Recorded in: SY58; SY66; SY67. SY58/5387 West Bexington (SY5387); 05 Oct; 07 Oct; 21 Oct (D Foot). SY66/MT 0001 Portland (SY6868); 2 on 27 Sep (M Cade). SY67/6870 Isle of Portland (SY6870); 2 on 24 Oct (D Saunders). West Grove Terrace (SY6972); 19 Oct (M Cade).

73.347 *Noctua janthina* [Denis & Schiffermüller], 1775 **LANGMAID'S YELLOW UNDERWING Migrant**

Recorded in: SY49; SY66. SY49/MT 0002 Bothenhampton (SY4892); 25 Oct (M S Parsons). SY66/MT 0001 Portland (SY6868); 19 Sep (M Cade).

Recorders

Records were gratefully received from the following 356 recorders: A Arglers; A Ashworth; A Barlow; A Collyer; A Dye; A Fale; A Foot; A Gibbs; A Graham; A Griffies; A H Bicker; A Heseltine; A Hooper; A J Brown; A King; A M McVeigh; A Millar; A Neilson; A Parkes; A Raw; A Reese; A Richards; A Rose; A Rosenthal; A Steel; B Arnold; B Bundy; B de Whalley; B Edge; B Foulger; B Franklin; B Geldart; B Mutter; B Tordoff; B Woodford; C Argles; C Becker; C Blair; C Bulman; C Chesters; C Clapham; C Court; C Crowfoot; C Deane; C Drake; C F Blyth; C Fletcher; C Furnivall; C Hargrave; C Hawkins; C Hicks; C Kelly; C Marsh; C Mason; C Miller; C Parr; C Pinder; C R Burningham; C R Spilling; C Sims; C Steele; C Stringer; C Stuckey; C Thain; C Tofield; C Trott; D C G Brown; D Dixon; D E Brown; D Foot; D Fowler; D Franklin; D Garland; D Gilbert; D Greeves; D Greves; D Hart; D Hawkins; D Hayes; D Helliard; D Higginson-Tranter; D Hodson; D J Evans; D Lonsdale; D Raper; D

Roberts; D Saunders; D Stem; D Wharam; E Day; E Driscoll; E Fitton; E Goodall; E Healy; E Roberts; E S Rose; E Woodford; F J Forrest; F Lewis; F Lonsdale; F Wolpe; F Wood; G A Laing; G A Nash; G Baron; G Brown; G Burger; G Casey; G Davis; G French; G Hedges; G Hibberd; G Laing; G Lester; G M Tordoff; G Redmond; G Sell; G Waters; G Will; H C R Wheatcroft; H G Wood Homer; H Sheeley; H Taggart; I Jones; I Laing; I Middlebrook; J A Newbould; J Arthur; J Baker; J Bedford; J Campbell; J Champion; J Cheeseman; J Clarke; J Cripps; J D McMillan; J Davis; J Driscoll; J Dumbleton; J E Carey; J E Down; J Falconer; J Francis; J Gale; J Galley; J Gash; J Gifford; J Gilbert; J H S Cox; J Holdsworth; J Hudson-Cook; J Hull; J Knight; J Knowler; J Lloyd; J Lurie; J M Elliott; J Mannerings; J McCulloch; J Moody; J Morrison; J Oughton; J Overall; J Parr; J Potter; J R Sokolnicki; J Rayner; J Sadd; J Samways; J Seawright; J Slingsby; J Smith; J Squirrel; J T Martin; J Thrift; J Tilt; J Topp; J Turner; J van Crugten; J Vark; J Vickers; J W Wescombe; J Watson; J Westgate; J Whitaker; J White; J Williams; J Williamson; J Wilson; K Blee; K Bunn; K Cruickshanks; K Darling-Finan; K Goold; K Henderson; K Jones; K Long; K Masters; K Mines; K Packer; K Saunders; K Tailby; K Williams; L Abbott; L Adams; L Creedon; L de Whalley; L Dowding; L Henley Lock; L Hewett; L J Hill; L Kelly; L Pullen; L Smith; M Andrews; M Bailey; M Baldwin; M Barnett; M Bellingham; M Brown; M C Harvey; M Cade; M Casserley; M Costello; M E Evans; M E Hammond; M Fowlie; M Fussell; M Gurney; M Hazlehurst; M Hetherington; M Howell; M Imrie; M J Hammond; M Jacobs; M Lewis; M Lovell; M Lowe; M Mai; M Munday; M Postle; M Raper; M Reed; M Ridge; M Roberts; M S Parsons; M S Warren; M Smith; M Taylor; M Wemyss; M Whyte; M Wilson; N A Croton; N Crowe; N Howell; N J Howell; N J Hull; N Kimber; N Maslen; N Ngo; N Passmore; N S Brown; N Spring; N Urch; P A Pires; P Baker; P Barden; P Boardman; P Brewster; P Bruce-Jones; P Budd; P England; P Fenwick; P Field; P Harris; P James; P Jefferies; P Newton; P Palmer; P Parker; P Potter; P Smith; P Spring; P T Kelly; P Wilson; R Baillie; R Baylis; R Belding; R Brunt; R Clark; R Comont; R George; R Heawood; R Hiley; R Hughes; R Jones; R Knight; R Laughton; R M Porter; R Melarange; R Norman; R Oxtoby; R P Harley; R Rogers; R Terry; R W Adams; R W Steedman; R Waldock; R Walls; R Yates; 'Ricky' Lambert; S Anderson; S Blackley; S Buckle; S Butler; S Byrne; S Colborne; S Cookson; S Curson; S Dutton; S Dyason; S Faulkner; S Fisher; S Foote; S Gledhill; S Hemingway; S Holder; S Hunter; S L Mahon; S Mackenzie; S Mahon; S Manning; S Mason; S Middlebrook; S Murphy; S Nash; S North; S Phelps; S Philp; S Prudence; S Tschersich; S Weston; S Wharam; T Ball; T Blades; T Brereton; T Collyer; T Gillett; V Giavarini; V Ingram; V Proklov; W G Shreeves; W T Franklin; W W Bown; Z A McMinn & Z Randle.

My apologies if anyone has been omitted from this list.

References

Agassiz, D.J.L., Beavan, S.D. & Heckford, R.J. 2013. *A checklist of the Lepidoptera of the British Isles*. Field Studies Council.